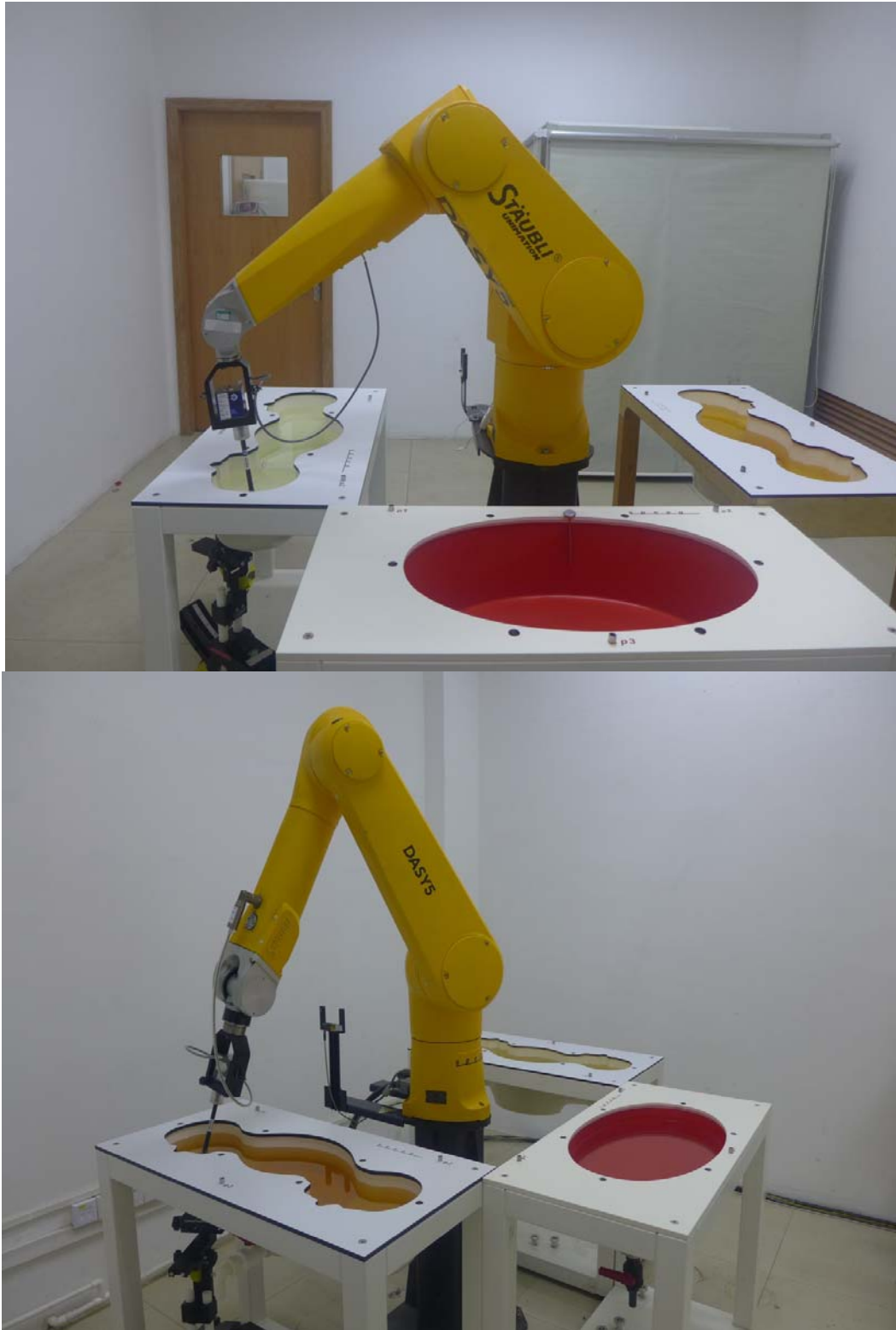


Appendix D

Photographs

1. SAR measurement System
2. Photographs of Tissue Simulate Liquid
3. Photographs of EUT test position
4. EUT Constructional Details

1. SAR measurement System



2. Photographs of Tissue Simulate Liquid

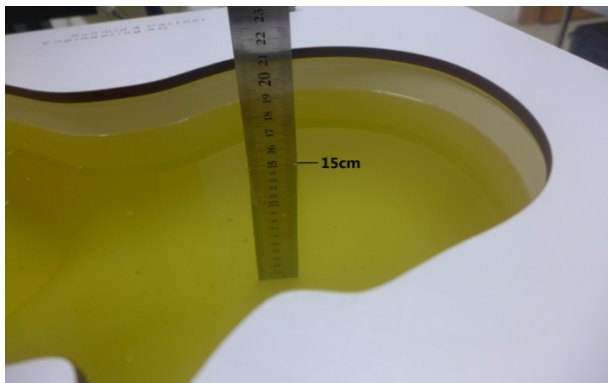
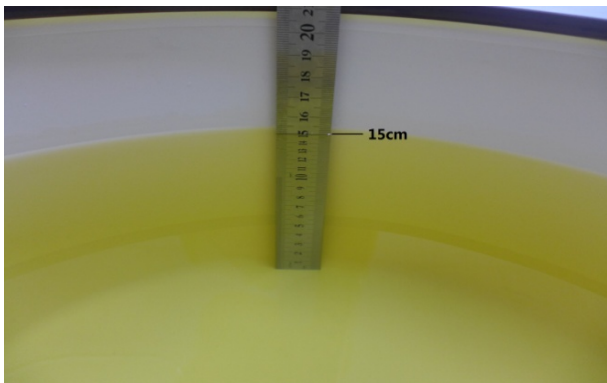
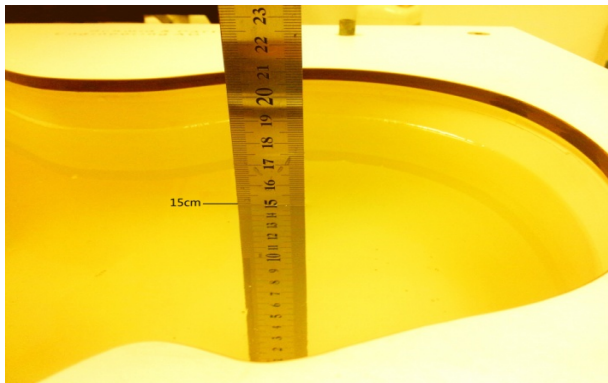
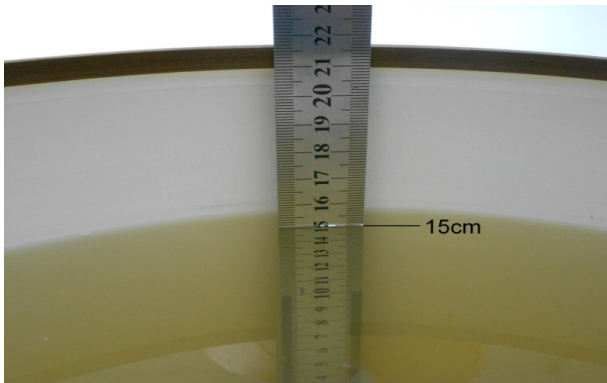
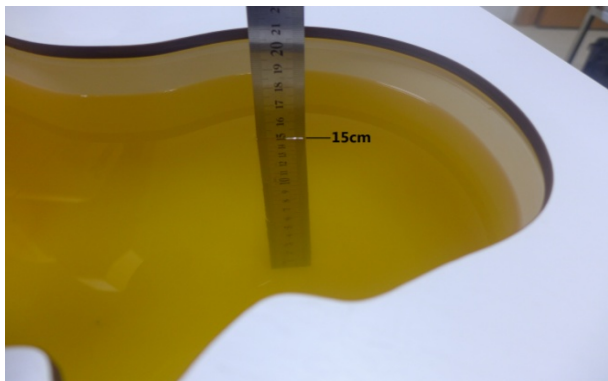
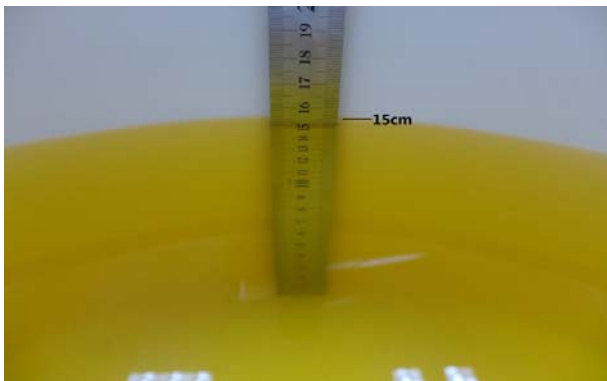
<p>Photo 1: Tissue Simulant Liquid for Head 750</p> 	<p>Photo 2: Tissue Simulant Liquid for Body 750</p> 
<p>Photo 3: Tissue Simulant Liquid for Head 835</p> 	<p>Photo 4: Tissue Simulant Liquid for Body 835</p> 
<p>Photo 5: Tissue Simulant Liquid for Head 1750</p> 	<p>Photo 6: Tissue Simulant Liquid for Body 1750</p> 

Photo 7: Tissue Simulant Liquid for Head 1900

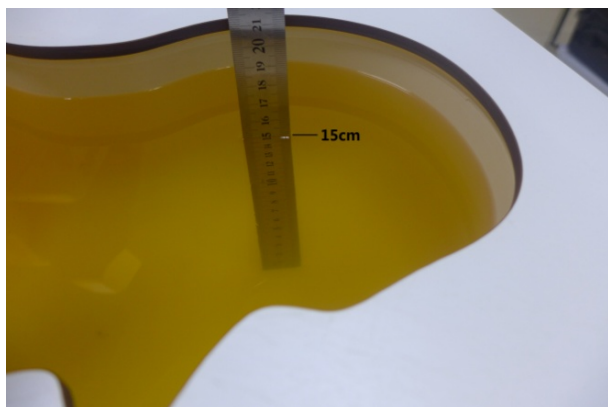


Photo 8: Tissue Simulant Liquid for Body 1900

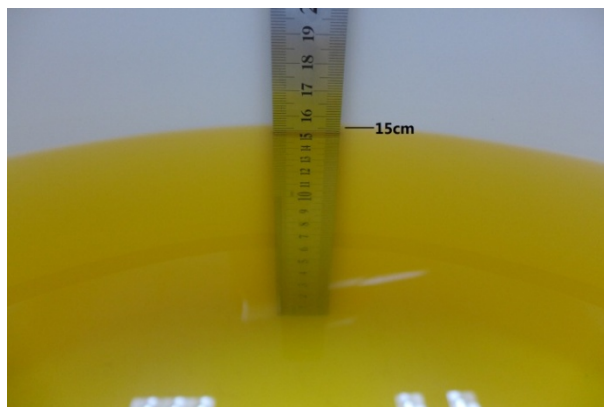


Photo 9: Tissue Simulant Liquid for Head 2450

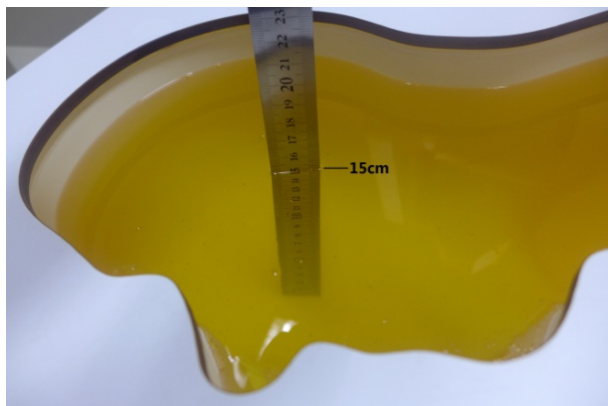


Photo 10: Tissue Simulant Liquid for Body 2450

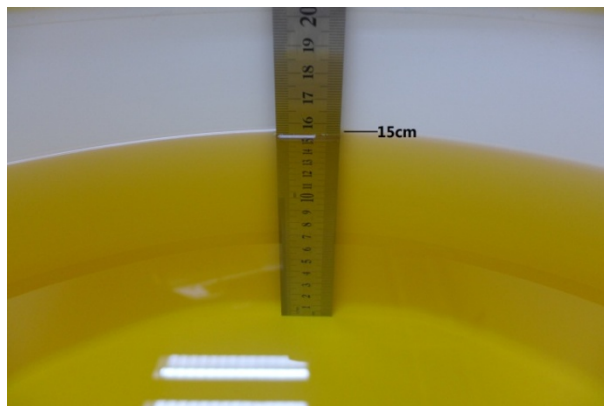


Photo 11: Tissue Simulant Liquid for Head 2600

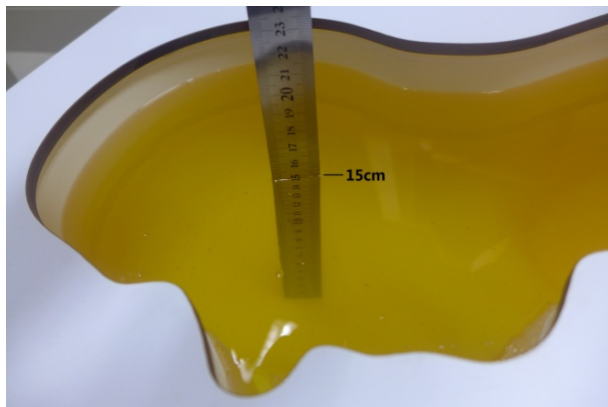


Photo 12: Tissue Simulant Liquid for Body 2600

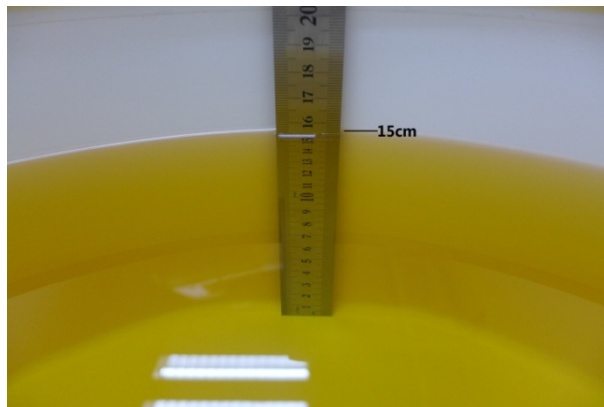


Photo 13: Tissue Simulant Liquid for Head 5G

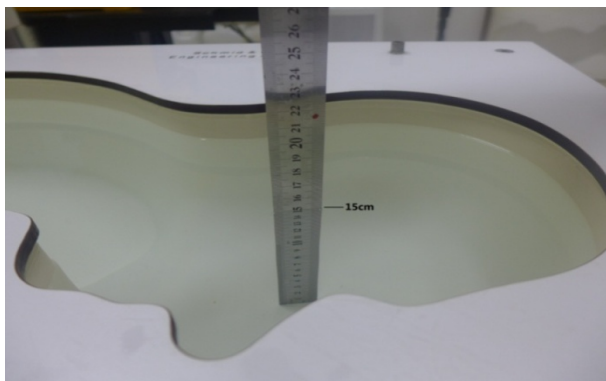
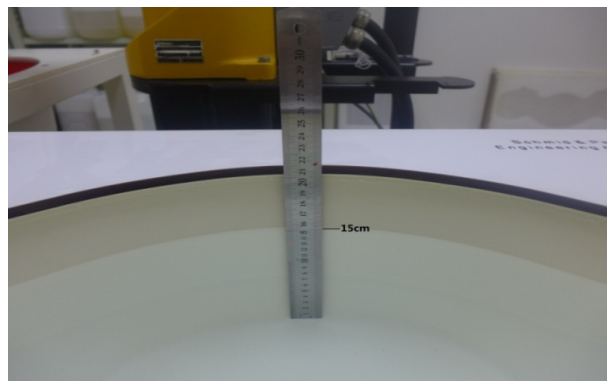


Photo 14: Tissue Simulant Liquid for Body 5G



3. Photographs of EUT test position

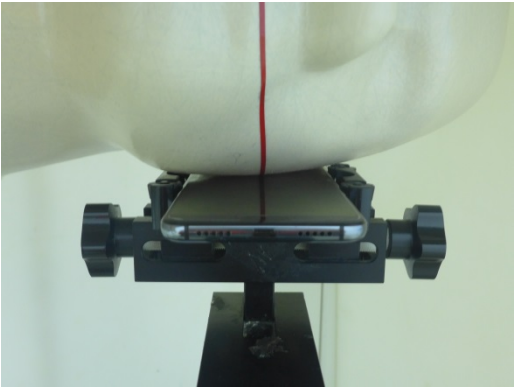
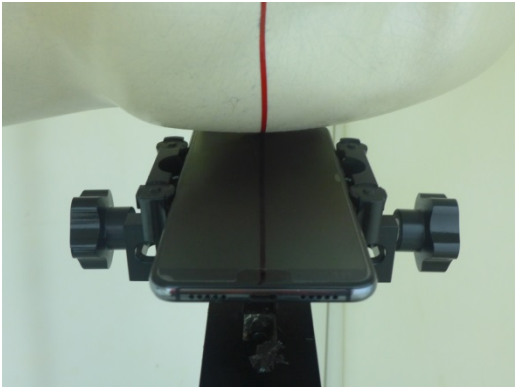
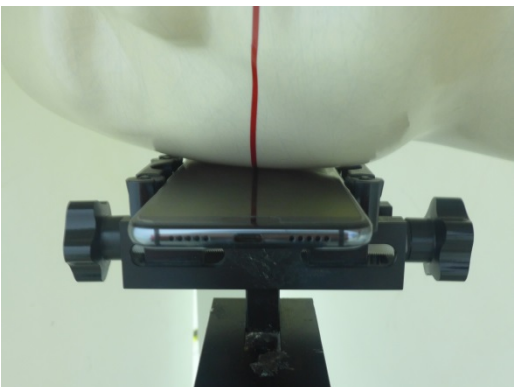
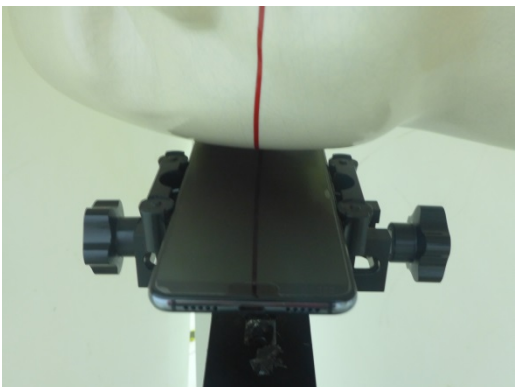
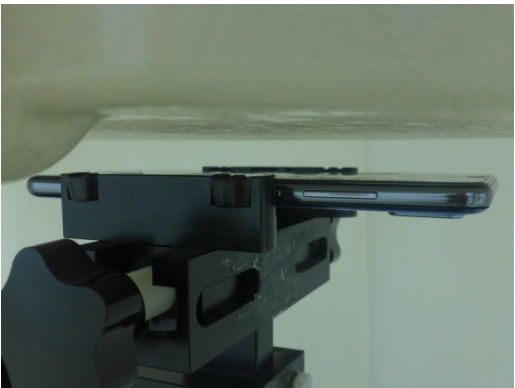

<p>Photo 15: Left touch cheek</p>	<p>Photo 16: Left tilted 15 degree</p>
 <p>A photograph showing a white mannequin head with a red vertical line on its left cheek. A black smartphone is held in a black mechanical fixture, positioned to touch the mannequin's cheek. The fixture is mounted on a black stand.</p>	 <p>A photograph showing the same setup as Photo 15, but the smartphone is tilted at a 15-degree angle to the left. The red line on the mannequin's cheek is still visible.</p>
<p>Photo 17: Right touch cheek</p>	<p>Photo 18: Right tilted 15 degree</p>
 <p>A photograph showing the white mannequin head with the red vertical line on its right cheek. The black smartphone is held in the black mechanical fixture, positioned to touch the mannequin's right cheek.</p>	 <p>A photograph showing the same setup as Photo 17, but the smartphone is tilted at a 15-degree angle to the right. The red line on the mannequin's cheek is still visible.</p>
<p>Photo 19: Front side 15mm</p>	<p>Photo 20: Back side 15mm</p>
 <p>A close-up photograph of the front side of the black smartphone held in the black mechanical fixture. The phone is positioned horizontally, and the fixture is mounted on a black stand.</p>	 <p>A close-up photograph of the back side of the black smartphone held in the black mechanical fixture. The phone is positioned horizontally, and the fixture is mounted on a black stand.</p>







Photo 21: Front side 10mm	Photo 22: Back side 10mm
	
Photo 23: Left side 10mm	Photo 24: Right side 10mm
	
Photo 25: Top side 10mm	Photo 26: Bottom side 10mm
	

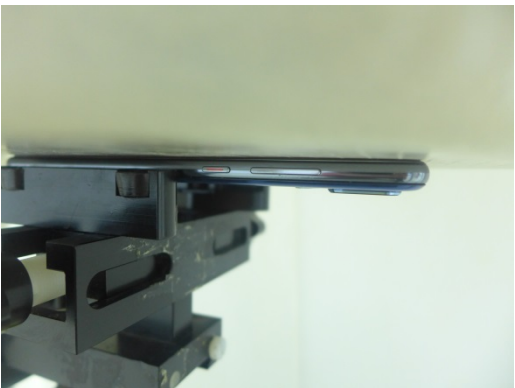







Photo 27: Front side 0mm	Photo 28: Back side 0mm
	
Photo 29: Left side 0mm	Photo 30: Right side 0mm
	
Photo 31: Top side 0mm	Photo 32: Bottom side 0mm
	

Photo 33: Bottom side 9mm	Photo 34: Bottom side 4mm
	

4. EUT Constructional Details

Photo 35: Front View	Photo 36: Back View
