

Wireless Broadband Router

User Manual

© 2003 All rights reserved. No part of this document may be reproduced or transmitted in any form or by any means, electronic or mechanical, for any purpose, without the express written permission of the seller.

Disclaimer

Information in this document is subject to change without notice. The material contained herein is supplied without representation or warranty of any kind. The seller therefore assumes no responsibility and shall have no liability of any kind arising from the supply or use of this document or the material contained herein.

Trademarks

Microsoft and Windows are registered trademarks of Microsoft Corporation. Ethernet is a registered trademark of Xeros Corporation. 54g is a registered trademark of Broadcom corporation. All other trademarks mentioned in this document are the property of their respective owners.

March 14, 2003 Rev01
F/W:2.02.10

Safety Instructions

For Installation

- Use only the type of power source indicated on the marking labels.
- Use only the power adapter supplied with the product.
- Do not overload wall outlet or extension cords as this may increase the risk of electric shock or fire. If the power cord is frayed, replace it with a new one.
- Proper ventilation is necessary to prevent the product overheating. Do not block or cover the slots and openings on the device, which are intended for ventilation and proper operation. It is recommended to mount the product with a stack.
- Do not place the product near any source of heat or expose it to direct sunshine.
- Do not expose the product to moisture. Never spill any liquid on the product.
- Do not attempt to connect with any computer accessory or electronic product without instructions from qualified service personnel. This may result in risk of electronic shock or fire.
- Do not place this product on an unstable stand or table.

For Using

- Power off and unplug this product from the wall outlet when it is not in use or before cleaning. Pay attention to the temperature of the power adapter. The temperature might be high.
- After powering off the product, power on the product at least 15 seconds later.
- Do not block the ventilating openings of this product.
- When the product is expected to be not in use for a period of time, unplug the power cord of the product to prevent it from the damage of storm or sudden increases in rating.

For Service

Do not attempt to disassemble or open covers of this unit yourself. Nor should you attempt to service the product yourself, which may void the user's authority to operate it. Contact qualified service personnel under the following conditions:

- If the power cord or plug is damaged or frayed.
- If liquid has been spilled into the product.
- If the product has been exposed to rain or water.
- If the product does not operate normally when the operating instructions are followed.
- If the product has been dropped or the cabinet has been damaged.
- If the product exhibits a distinct change in performance.

FCC Information

FCC Statement

This equipment has been tested and found to comply with the limits for a Class B digital device, pursuant to part 15 of the FCC Rules. These limits are designed to provide reasonable protection against harmful interference in a residential installation. This equipment generates uses and can radiate radio frequency energy and, if not installed and used in accordance with the instructions, may cause harmful interference to radio communication. However, there is no guarantee that interference will not occur in a particular installation. If this equipment does cause harmful interference to radio or television reception, which can be determined by turning the equipment off and on, the user is encouraged to try to correct the interference by one or more of the following measures:

- Reorient or relocate the receiving antenna.
- Increase the separation between the equipment and receiver.
- Connect the equipment into an outlet on a circuit different from that to which the receiver is connected.
- Consult the dealer or an experienced radio/TV technician for help.

FCC condition

This device complies with part 15 of the FCC Rules. Operation is subject to the Following two conditions:

1. This device may not cause harmful interference.
2. This device must accept any interference received, including interference that may cause undesired operation.

FCC Radiation Exposure Statement

This equipment complies with FCC radiation exposure limits set forth for an uncontrolled environment. This equipment should be installed and operated with minimum distance of 20cm between the radiator & your body.

This transmitter must not be co-located or operating in conjunction with any other antenna or transmitter.

iii

FCC Warning

Any changes or modifications not expressly approved by the party responsible for compliance could void the user's authority to operate the equipment

IC Warning

To prevent radio interference to the licensed service, this device is intended to be operated indoors and away from windows to provide maximum shielding. Equipment (or its transmit antenna) that is installed outdoors is subject to licensing.

About This User Manual

For brevity, throughout this manual the “Wireless Broadband Router” is referred to as “the router” or “the device” and following terms or abbreviations are used interchangeably:

- Access Point-AP
- Wireless LAN-WLAN
- Ethernet network-LAN-network

This User Manual contains information on how to install and configure your Wireless Broadband Router to get your network started accessing the Internet. From now on, we will guide you through the correct configuration steps to get your device up and run.

Contents

1	Introduction	1
	1.1 Overview.....	1
	1.2 Features	2
	1.3 Package Contents	3
	1.4 System Requirements	3
2	Hardware Description & Installation	5
	2.1 Physical Outlook.....	5
	Front Panel.....	5
	Rear Panel and Connectors	6
	2.2 Hardware Connection.....	7
	Choosing a Place for the Router	7
	Connecting the Wireless Broadband Router	7
3	Setting Up Ethernet / WLAN Client	9
	3.1 Overview.....	9
	3.2 Setting up TCP/IP	10
	For Windows 98/ME	10
	For Windows 2000/XP.....	12
	3.2 Setting up Wireless Client.....	14
	3.3 Checking Connection with the Router.....	15
4	Web Configuration	17
	4.1 Accessing Web-Based Configuration Utility.....	17
	To enable Your Settings.....	18
	4.2 Viewing System Status	19
	4.3 Configuration for NAT Routing Mode	20
	WAN Configuration for NAT Routing Mode	21
	LAN Configuration for NAT Routing Mode.....	26
	Viewing Current DHCP Assignments	27

4.4 Configuration for Bridge Mode.....	28
4.5 Wireless LAN (2.4G) Configuration.....	31
4.6 Filters.....	36
Specifying Your IP Filter Rules	36
Filter Types.....	37
Filter Scenario of the Wireless Broadband Router	38
Viewing Filter Log.....	39
Other Firewall Settings	39
4.7 Forwarding.....	41
Setting Up Forwarding Entries	41
If you have a Web server on your network... ..	42
4.8 Administration	44

5	Troubleshooting	47
----------	-----------------------	----

6

Specification.....	49
6.1 Hardware	49
6.2 Software	50

1 Introduction

1.1 Overview

Thank you for choosing this Wireless Broadband Router. This Wireless Broadband Route is a multi-function device featuring a wireless 54Mbps Access Point, a 4-port LAN switch and a WAN port which extends your existing broadband Cable/ADSL connection. It allows your Internet connection to be shared through either the 54Mbps Access Point feature or the 10/100Base-TX Ethernet switch, which also eliminates the purchase of additional hub or switch. Now your wired and wireless network are integrated to enjoy various bandwidth-consuming applications over the Internet.

With the support of new emerged 802.11g draft standard, the Access Point provides data transfer of up to 54 Mbps, up to 5 times faster than 802.11b. Since 802.11g operates on the same frequency of 2.4 GHz as 802.11b, it is backwards compatible with existing Wi-Fi 802.11b devices. The benefit is that you can preserve the existing 802.11b infrastructure while migrating to the new screaming fast 802.11g.

The router can act as a DHCP server to automatically assign IP addresses to your LAN devices. With the built-in Network Address Translation (NAT) function, your LAN can access the Internet through a single external IP address and at the same time is protected against outside intruders. The router can also be configured to filter internal access to the Internet. It is designed to provide a reliable Internet access solution for the corporate environment, the small office and the home user.

1.2 Features

- One 10/100 Base-TX RJ-45 auto sensing and crossover Ethernet WAN port for Broadband connection (Cable/DSL or direct Ethernet)
- Four RJ-45 LAN ports for 10/100Base-TX auto sensing & crossover Ethernet Switch LAN connection
- 802.11g Wireless LAN
- Two external antennas for wireless technology
- PPPoE (PPP over Ethernet) Client with Keep Alive/Connect On Demand Support
- PAP and CHAP Authentication
- DHCP Client
- MAC Address Cloning
- DHCP Server
- NAT
- Firewall Support
- Bridge Mode Support
- 802.1D Spanning Tree Bridging
- IP Filtering, IP Forwarding
- DMZ Hosting
- ASCII/HEX Format 64/128 Bit WEP Key for Wireless LAN
- Allow List for Wireless LAN
- VPN Support (IPSec Passthrough, and PPTP Passthrough)
- Configurable through Web Browser via WAN/LAN
- Software Upgrade
- NTP/Manual System Clock
- Configuration Saving/Retrieving
- Event Log

1.3 Package Contents

Check the contents of the package against the pack contents checklist below. If any of the items is missing, then contact the dealer from whom the equipment was purchased.

- Wireless Broadband Router x1
- Power Adapter and Cord x1
- CD-ROM x1
- RJ-45 Ethernet Cable x1

1.4 System Requirements

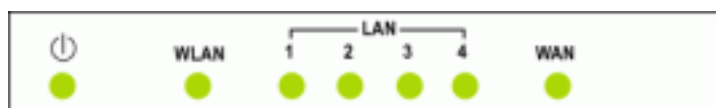
- Cable/ADSL modem and an Internet access account for Internet connection
- One computer with 10/100Base-T Ethernet card and TCP/IP protocol installed for initial setup
- Internet Explorer 5.0 or higher for Web configuration
- 802.11g or 802.11b compliant wireless adapters (for wireless connection)

2 Hardware Description & Installation

2.1 Physical Outlook

Front Panel

The following illustration shows the front panel of the Wireless Broadband Router:



LED Indicators

The Wireless Broadband Router is equipped with seven LEDs on the front panel as described in the table below (from left to right):

LEDs	Function	Color	Status	Description
	Power	Green	Off	No power is supplied to the unit.
			Solid	Power is connected to the unit.
WLAN	Wireless LAN Port Ready/Activity	Green	Off	WLAN interface is not initialized properly.
			On	WLAN interface is initialized properly and ready.
			Blinking	Transmitting/receiving packets on the WLAN port.
LAN 1-4	LAN Port Status	Orange (100 Mbps)	Off	Power is off or no Ethernet device is connected.
			On	Ethernet device is connected.

LEDs	Function	Color	Status	Description
		Green (10 Mbps)	Blinking	Transmitting/receiving packets on the LAN port.
WAN	WAN Port Status	Green	Off	Power is off or no broadband device is connected.
			On	Broadband device is connected.
			Blinking	Transmitting/receiving packets on the WAN port.

Rear Panel and Connectors

The following figure illustrates the rear panel of your Wireless Broadband Router.



- **DC 5V/2A:** Power connector
- **LAN Ports 1-4:** RJ-45 Connectors. Integrated 4-port 10/100BaseT switch. Connects to a hub, switch or NIC-equipped PC in your network. The LAN ports support Auto-MDIX feature which eliminates the need for crossover cables.
- **Internet / WAN:** RJ-45 connector. Connects to the Cable/ADSL Modem. The WAN port also supports Auto-MDIX feature which eliminates the need for crossover cables.
- **Reset button**
To reset the device to factory defaults, insert a straightened paperclip into the **Reset** hole to press the button. Keep pressing and power cycle (off and on) the device. Wait for at least 5 seconds to release the button. Then wait for the device to finish booting.

If you want to restore your customized settings after loading defaults, refer to “4.8 Administration” for more information.

2.2 Hardware Connection

Choosing a Place for the Router

- Place the device close to the power outlet for the cable to reach it easily.
- Avoid placing the device in places where people may walk on the cables. Also keep it away from direct sunshine or heat sources.
- Place the device on a flat and stable stand.

Connecting the Wireless Broadband Router

Prior to connecting the hardware, make sure to power off your Ethernet device, Cable/ADSL modem and Wireless Broadband Router. Then follow the steps below to connect the related devices.

Step 1 Connecting Your network to the LAN port.

Attach one end of the Ethernet cable with RJ-45 connectors to your hub, switch or a PC's Ethernet port, and the other end to the **LAN** port of your Wireless Broadband Router.

Step 2 Connecting Cable/ADSL Modem to the Internet/WAN port.

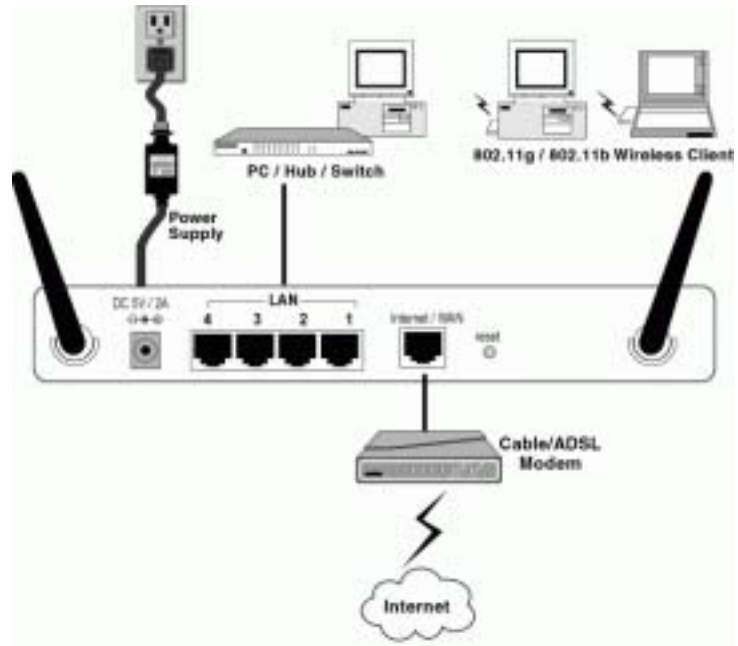
Connect the Ethernet cable attaching to your Cable/ADSL modem to the **Internet/WAN** port of your Wireless Broadband Router.

Step 3 Connecting the power adapter.

Connect the single DC output connector of the power adapter to the power jack on the back of the Wireless Broadband Router. Then connect the supplied power cord to the power adapter and the other end to an AC outlet.

Caution: Use only the adapter supplied with the Router. Connecting the wrong adapter could damage the device.

The figure below illustrates a connection diagram example:



3

Setting Up Ethernet / WLAN Client

This chapter describes how to configure a computer for initial connection to the device. If you have modified the router's network setting, your LAN / WLAN clients should make appropriate changes in order to make successful connection.

3.1 Overview

To access the Wireless Broadband Router's Web-based Configuration Utility, at least one properly configured PC must be connected to the device and reside on the same subnet with the Wireless Broadband Router. The easiest way to make the connection is attaching your host computer's NIC directly to the LAN port of the device, though it is also allowed to configure the device via a wireless client.

Whatever your connection method, the computer's Ethernet /wireless interface must be on the same subnet with the router. As the Wireless Broadband Router is configured with these default values:

- **IP address:** 192.168.1.1
- **Subnet mask:** 255.255.255.0
- **DHCP server:** Enabled with the IP address pool from 192.168.1.100 to 192.168.1.150.

So you should set up your NIC's or wireless adapter's TCP/IP settings as one of the following:

1. To use dynamic IP: Set your PC to be DHCP client to accept the dynamic IP from the router's DHCP server.
2. To use static IP: Set the IP address as **192.168.1.x** (x is between 2 and 254), subnet mask as **255.255.255.0** and the gateway as **192.168.1.1** to be on the same subnet with the router.

The default TCP/IP setting for Windows is acting as a DHCP client. Please proceed to next section to verify or, if necessary, configure your TCP/IP settings.

3.2 Setting up TCP/IP

Before proceeding, make sure your computer is equipped with Ethernet network card or wireless adapter and has appropriate network card driver and TCP/IP installed.

Notes:

1. If TCP/IP protocol is not installed on your PC, refer to Windows documentations for installation instructions.
 2. For initial verification, we suggest that you connect only one PC directly to an LAN port on the Wireless Broadband Router, not through a hub.
-

For Windows 98/ME

- Step 1 Click on the **Start** menu, point to **Settings** and click on **Control Panel**.
- Step 2 Double-click the **Network** icon.
- Step 3 In the **Network** window, highlight **TCP/IP** protocol for your NIC or wireless adapter and click **Properties**.
- Step 4 Choose one of the methods as required:

Option A: Using DHCP

On the **IP Address** tab, select **Obtain an IP address automatically**.

Then an IP address will be automatically assigned to your computer.



Option B: Using Fixed IP Address

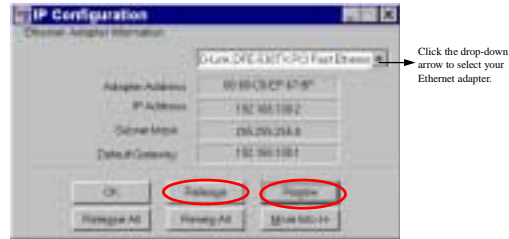
- On the **IP Address** tab, select **Specify an IP address**.
- Then set the IP address as **192.168.1.x** (x is between 2 and 254), subnet mask as **255.255.255.0**.
- Select the **Gateway** tab and set the gateway to **192.168.1.1**.

Step 5 Click **OK** twice to finish the configuration. If your network settings have been changed, you will be prompted to restart your computer. Click **Yes** to have new settings take effect.

Check/Renew IP Address under Windows 98/ME

The following steps help you verify if your network adapter gets an IP address within the DHCP IP pool range (192.168.1.100 ~ 192.168.1.150 by default) of the router. If not, you may need to renew the IP information.

- Step 1 From the **Start** menu, click **Run** to open the **Run** dialog box.
- Step 2 Enter **winipcfg** in the dialog box and then click **OK**.
- Step 3 Select the Ethernet or WLAN adapter from the drop-down list to show the IP address. If necessary, click **Release** and then **Renew** to get a new IP address.

**For Windows 2000/XP**

- Step 1 Click on the **Start** menu, point to **Settings** and click on **Control Panel**.
- Step 2 Double-click the **Network and Dial-up Connections** or **Network Connections** icon.
- Step 2 Right-click the **Local Area Connection** icon for your NIC or wireless adapter and then click **Properties**.
- Step 3 On the **General** tab, highlight **Internet Protocol (TCP/IP)** and then click **Properties**.
- Step 4 Choose one of the methods as required:

Option A: Using DHCP

On the **IP Address** tab, enable **Obtain an IP address automatically** and then click **OK**.

Then an IP address will be automatically assigned to your computer.



Option B: Using Fixed IP Address

Select **Use the following IP address** and enter these settings:

- **IP address:** 192.168.1.x (x is between 2 and 254)
- **Subnet mask:** 255.255.255.0.
- **Default Gateway:** 192.168.1.1.

Check/Renew IP Address under Windows 2000/XP

The following steps help you verify if your network adapter gets an IP address within the DHCP IP pool range (192.168.1.100 ~ 192.168.1.150 by default) of the router. If not, you may need to renew the IP information.

- Step 1 Click **Run** from the **Start** menu to open the **Run** dialog box.
- Step 2 Type **cmd** in the dialog box and then click **OK**.
- Step 3 At prompt, type **ipconfig** to see the IP information from DHCP server.
- Step 4 If you want to get a new IP address, type **ipconfig /release** to release the previous IP address and then type **ipconfig /renew** to get a new one.

3.2 Setting up Wireless Client

If you choose to access the router via a wireless client, also verify the following:

1. Make sure your PC is equipped with 802.11g or 802.11b wireless adapter and has appropriate WLAN card driver/utility and TCP/IP installed.
2. Set the wireless adapter to use appropriate TCP/IP settings as described in previous section.
3. Launch the wireless adapter's provided utility and verify that your wireless client is configured with these settings:
 - **Operation Mode:** Infrastructure
 - **SSID:** 11g AP
 - **Authentication:** Open
 - **WEP Mode:** Disabled

3.3 Checking Connection with the Router

You can use the Ping command to verify whether or not your Ethernet/Wireless client has successfully connected to the Wireless Broadband Router.

To execute ping command, open the DOS window and ping the IP address of the router at the DOS prompt. For example:

```
ping 192.168.1.1
```

If the following response occurs:

```
Reply from 192.168.1.1 bytes=32 time=100ms TTL=253
```

Then the connection between the Wireless Broadband Router and the network has been successfully established.

Otherwise, if you get a failed ping with the response of:

```
Request time out
```

Then the connection is fail. Verify your network setting is correct. For Ethernet client, also check the cable between the router and the PC.

4 Web Configuration

4.1 Accessing Web-Based Configuration Utility

Once your PC is properly configured as described in "3. Setting Up Ethernet / WLAN Client", you can proceed as follows for initial configuration:

1. Start your Web browser and type **http://192.168.1.1** in the URL field. This address is the default private IP of your router.



Note: If the router's LAN port has been specified with new IP address, enter the new IP instead.

2. After connecting to the device, you will be prompted to enter the username and password. Leave the username empty and enter the default password of **admin**.



Figure 4-1 Login to Web Configuration Utility

After you login, the **System Overview** page of the Wireless Broadband Router displays. From now on the Wireless Broadband Router acts as a Web server sending HTML pages/forms on your request. You can click the menu options at the top to start your configuration task.

While working with this Web Configuration Utility, corresponding configuration fields are displayed according to your specific selection to avoid any possible conflicting setting. In addition, should you input invalid values, the utility provides instant prompt to help you recover from error inputs.

To enable Your Settings

After you have customized the settings and then click the **Apply** button, the device will begin registering your settings. You will be prompted to wait for a few seconds for the router to commit changes to permanent storage. During this process, it is important not to power on or off the router otherwise damage may be caused to the device.

After the settings have been registered, the screen will return to previous page and the settings are effective. You may then proceed with other configuration tasks.

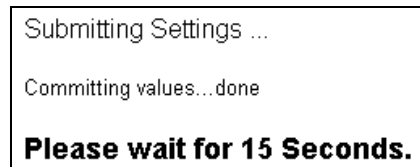


Figure 4-2 Applying Changes

4.2 Viewing System Status

Clicking **System Overview** in the menu bar will display the **System Overview** page which shows the basic information of your Wireless Broadband Router, including the system, WAN/LAN interface and Wireless LAN interface information. You may click the **Update** button to update the overall status.

If firewall is enabled, an additional item **Firewall** is displayed at the bottom of the page. Clicking the **Show Log** button under this item will display the firewall activity log in a separate window.

System Overview	WAN	LAN	Wireless LAN (WLAN)	Filter	Forwarding	Administration						
This page displays summary for the router status. Click the button to update Update												
System		System Time: 1970-01-01, 00:30:11 Firmware Version: 2.02.10										
WAN Interface		WAN/LAN Relation: NAT Routing Protocol: DHCP Client MAC Address: 00:00:00:00:00:00 IP Address/Subnet Mask: 0.0.0.0 / 0.0.0.0 Default Gateway: DNS Servers: WINS Servers: Host Name: Domain Name:										
LAN Interface		MAC Address: 00:00:00:00:00:00 IP Address/Subnet Mask: 192.168.1.1 / 255.255.255.0 DHCP Server: Enabled Active DHCP Leases: <table border="1"> <thead> <tr> <th>MAC Address</th> <th>IP Address</th> <th>Expires At</th> </tr> </thead> <tbody> <tr> <td>00:00:00:00:00:00</td> <td>192.168.1.100</td> <td>27 seconds</td> </tr> </tbody> </table>					MAC Address	IP Address	Expires At	00:00:00:00:00:00	192.168.1.100	27 seconds
MAC Address	IP Address	Expires At										
00:00:00:00:00:00	192.168.1.100	27 seconds										
Wireless LAN (WLAN) Interface		Access Point Name: 11g AP SSID: 11g AP BSSID: 00:00:00:00:00:00 Channel ID: 11										
Firewall		Activity Log: Show Log										

Figure 4-3 System Overview

4.3 Configuration for NAT Routing Mode

Prior to configuring your Wireless Broadband Router, you must decide whether to configure the device as a router or as a bridge. This section only describes how to set up the device to act as a router. For bridge configuration, see "4.4 Configuration for Bridge Mode" for instructions.

When operating as a router, the device communicates with your ISP through the WAN port. Depending on the connection type offered by your ISP, you may get the WAN IP address by one of the following means:

- **DHCP Client:** In this connection type, your router acts as a DHCP client and requests IP information from the DHCP server on the ISP side. Select this option if your ISP assigns you with a dynamic IP address each time you log on.
- **PPPoE Client:** Some ISPs use a PPPoE session to make connection with their clients. If this is the case, you should enable this option and finish the PPPoE Client settings. The WAN port of the device will be assigned a public IP address from your ISP's server.
- **PPTP Client:** This router supports VPN (Virtual Private Network) pass-through for both PPTP (Point-to-Point Tunneling Protocol) and IPSec (IP Security). VPN allows corporations to extend their own corporate network through private "tunnels" over the public Internet. If your ISP, e.g., European DSL service providers, uses PPTP as a connection method, you should use this option.
- **Manual Config:** If your ISP assigns you a fixed IP address, you should select this option and manually enter the IP information provided by your ISP.

Different configuration items will be displayed depending on your connection type. Consult with your ISP which option applies to you and obtain related information for correct configuration. Then proceed to finish the following procedures.

WAN Configuration for NAT Routing Mode

Click **WAN** in the configuration menu to enter the WAN configuration page and carry out the procedures below.

Part 1. Configuring general settings.

1. In the **WAN/LAN Relation** item, select the **NAT Routing** option.

This option allows the device to act as a router and use the built-in NAT function to translate your multiple private IP addresses to a single public IP address. However, only outgoing requests are allowed to pass through the device unless you specify otherwise. Outside users cannot see your private local IP addresses. This leaves your home or business network hidden from outside intruders.

2. In the **Protocol** item, select a protocol type according to the connection type offered by your ISP.

3. If required, in the **MAC Address** field, enter your network adapter's MAC address in the format of xx:xx:xx:xx:xx:xx. Otherwise just keep the default values.

This field allows you to clone a network adapter's MAC address to the WAN port of the router. Some ISPs use the MAC address of NIC, which was connected to your Cable/ADSL modem, for static mapping and thus give you the same IP address each time the Cable/ADSL modem requests for IP address for the Ethernet port. If this is the case, this feature removes the need of asking your ISP to change the registered MAC address and you can still use the same given IP for the router's WAN port.

4. In the **Host Name** field, you may supply a host name for this router if this is required by your ISP. Some ISPs only respond to a DHCP request with a valid "Host Name". If a host name is not necessary for your ISP, just leave it blank.

Part 2. Configuring protocol-specific settings

According to the connection type you selected above, proceed to set up related parameters.

► DHCP Client

If DHCP Client is your option, no other configuration is needed. You may just click **Apply** to end your WAN settings. After the connection to your ISP is established, the information provided by your ISP will be displayed in the **Status** group.

General	WAN/LAN Role: WAN Protocol: DHCP Client MAC Address: 00:90:28:12:81:29 Host Name:	<input type="checkbox"/> NAT Routing <input type="checkbox"/> Bridging <input checked="" type="checkbox"/> DHCP Client <input type="checkbox"/> PPPoE Client <input type="checkbox"/> PPP Client <input type="checkbox"/> Manual Config
Status	IP Address/Subnet Mask: 8.8.8.8/8.8.8.8 Default Gateway: DNS Servers: VRRP Servers: Domain Name:	

Figure 4-4 WAN Configuration-DHCP Client

► PPPoE Client

If PPPoE Client is your option, configure these fields as required by your ISP.

PPPoE Connection Status: This item is not configurable. It displays whether the connection is up or down.

Username/Password: Enter the username and password provided by your ISP used to log on to Internet connection.

Connection Mode: Select your PPP connection from these options:

Keep Alive: This feature will keep your PPPoE-enabled Internet connection always alive. This is done by sending echo requests periodically to ISP to prevent the connection from being terminated by ISP.

Connect on Demand: If enabled, the router will trigger a PPP session for connection to the Internet if any client PC on your LAN sends out a request for Internet access. However, the router automatically disconnects the PPP session after the WAN connection has been idle for the amount of time you specified in the **Max Idle Time** box. If your Internet account is billed based on the amount of time of your Internet connection, you probably want to enable this option and enter an idle time value best suitable for your network.

Manual Connect: If enabled, the system administrator can manually connect or disconnect the PPP session by clicking the **Connect/Disconnect** buttons in this page.

MTU/MRU: Allows you to adjust the Maximum Transmission/Receive Unit in bytes for the WAN interface. The packets larger than the specified values will be fragmented before being transmitted.

It's suggested not to modify the MTU/MRU settings unless instructed by your ISP.

After you finish the WAN settings, click **Apply** to submit your changes.

Figure 4-5 WAN Configuration-PPPoE Client

► PPTP Client

If PPTP Client is your option, configure these fields as required.

Username/Password: Enter the access credentials, i.e., username and password, for the router to initiate a PPTP connection to the PPTP server.

Server IP Address: Enter the IP address of the PPTP server.

IP Address/Subnet Mask: Enter the Internet IP address/subnet mask that the ISP assigns to this router for reaching the PPTP server.

Idle Disconnect: If you want to automatically terminate the connection to your ISP when there is no connection for a period of time, check this option and enter the desired idle time.

The screenshot shows a web-based configuration interface for a PPTP Client. It is divided into two main sections: 'General' and 'PPTP Client'. The 'General' section includes tabs for 'WAN/LAN Status', 'Protocol', 'WAN Address', and 'Host Name'. The 'Protocol' tab is selected, showing radio buttons for 'Full Routing', 'Dialing', 'DHCP Client', 'PPPoE Client', 'PPTP Client' (which is selected), and 'Manual Config'. The 'PPTP Client' section contains input fields for 'Username', 'Password', 'Server IP Address', 'IP Address', 'Subnet Mask', and 'Idle Disconnect'. The 'Idle Disconnect' option is checked, and a text box next to it allows for entering a time in minutes. At the bottom right, there are 'Apply' and 'Cancel' buttons.

Figure 4-6 WAN Configuration-PPTP Client

► Manual Config

If Manual Config is your option, configure these fields as required by your ISP.

IP Address/Subnet Mask: Enter the fixed IP address and subnet mask given by your ISP in respective fields. The default values are 0.0.0.0/0.0.0.0.

Default Gateway: The IP address of the default gateway of the router. It is the IP that the router first contact to communicate with the Internet.

DNS Servers: Specifies the IP address of the Domain Name Server. Your LAN side DHCP clients use the DNS to map a domain name to its corresponding IP address and vice versa. Up to three DNS servers are allowed. If no DNS server is specified or the specified servers are not available, the router will automatically assign a DNS server to the DHCP clients.

WINS Servers: Optional for Windows Internet Names Service. Enter the IP addresses of WINS servers if required.

Host Name & Domain Name: Optional. Allows you to supply host and domain name for the router.

After you finish the WAN settings, click **Apply** to submit your changes.

Figure 4-7 WAN Configuration-Manual Config

LAN Configuration for NAT Routing Mode

Your router communicates with your LAN through its LAN port. The LAN configuration page allows you to define the private IP address and DHCP server settings over the LAN interface.

1. In **Manual Config > IP Address & Subnet Mask** field, enter the IP address and subnet mask for the LAN port.

By default, the IP address and subnet mask of the LAN port is **192.168.1.1** and **255.255.255.0** respectively. Note that if you change the private IP address and apply the changes, the PC from which you configure the router will lose the communication to the router. To reconnect, you will need to renew the IP address of the PC or change to an IP address compatible with the new LAN port IP address.

2. In **DHCP Server > Service** field, select whether to enable DHCP service on the LAN and WLAN port.

The Wireless Broadband Router implements a built-in DHCP (Dynamic Host Configuration Protocol) server on its LAN and WLAN interface, which dynamically assigns IP addresses to the DHCP clients on the LAN / WLAN. The DHCP server also provides a default gateway (the router's LAN IP address) and DNS addresses for DHCP clients to access the Internet. DHCP function spares you the hassle of manually assigning a fixed IP address to each PC on the LAN / WLAN. It is probably you already have a DHCP server on your network and you do not enable this function. DHCP server is enabled by default.

Note: It is not allowed to have two DHCP servers running on one LAN at the same time. If you decide to enable the DHCP on this router, remember to disable the DHCP function of the other device.

If you disable DHCP server, just click **Apply** to submit your changes. Otherwise proceed to next step.

3. If DHCP server is enabled, enter the fields below:

DHCP Lease Time: Specify the time that a network device can lease a private IP address before the DHCP server reassigning the IP address.

IP Pool Range: Specify the starting and ending IP address of the IP address pool. Whenever a network device requests an

Internet session, the router will allocate an unused IP address from this pool and lease them to the device for a specified amount of time.

Figure 4-8 LAN Configuration in Router Mode

Viewing Current DHCP Assignments

When DHCP server function is enabled, the router keeps a record of any machine (either Ethernet or Wireless node) that has leased IP from the specified IP pool. The DHCP lease table is displayed under **System Overview > LAN Interface**:

LAN Interface	MAC Address:	00:90:40:10:00:2A								
	IP Address/Subnet Mask:	192.168.1.1 / 255.255.255.0								
	DHCP Server:	Enabled								
	Active DHCP Leases:									
		<table><tr><th>MAC Address</th><th>IP Address</th><th>Expires In</th></tr><tr><td>00:05:54:a6:3a:e9</td><td>192.168.1.100</td><td>46 seconds</td></tr><tr><td>00:90:96:00:45:32</td><td>192.168.1.101</td><td>expired</td></tr></table>	MAC Address	IP Address	Expires In	00:05:54:a6:3a:e9	192.168.1.100	46 seconds	00:90:96:00:45:32	192.168.1.101
MAC Address	IP Address	Expires In								
00:05:54:a6:3a:e9	192.168.1.100	46 seconds								
00:90:96:00:45:32	192.168.1.101	expired								

Figure 4-9 DHCP Lease Table

4.4 Configuration for Bridge Mode

A bridge connects two or more LANs together and bases the forwarding decision on the MAC address. Under Bridge mode, filters and forwarding are not applicable. Acting as a bridge, the device supports DHCP server service. To set up the bridge mode, perform the procedures below.

Part 1. Enable bridging function.

Go to the WAN configuration page and select the **Bridging** option as the **WAN/LAN relation** and then click **Apply** to commit the changes.



Figure 4-10 Enabling Bridging Mode

Part 2. LAN configuration.

1. In the **Protocol** item, select **DHCP Client** or **Manual Config** as required.

DHCP Client: Select this option if there is already a DHCP server in your network which assigns IP to this bridge. If enabled, no further configuration is needed since the DHCP server will pass the required IP information. Click **Apply** to submit your changes.

Note: After committing the settings, your configuring PC may lose connection to the device. To reconnect, you will need to make sure the PC uses an IP address in the same subnet as the device.

Figure 4-11 Bridge Mode-DHCP Client

Manual Config: If enabled, manually enter the IP address and its subnet mask in **IP Address & Subnet Mask** fields.

2. For **Manual Config** setting only, in **DHCP Server > Service** item, select whether to have your bridge act as a DHCP server.

If you disable DHCP service, no further configuration is required. Just click **Apply** to submit your changes.

Note: After committing this setting, your configuring PC may lose connection to the device. To reconnect, you will need to make sure the PC uses an IP address in the same subnet as the manually entered IP.

If DHCP server service is enabled, proceed to set up the items below:

DHCP Lease Time: Specify the time that a network device can lease a private IP address before the device reassigning the IP address.

IP Pool Range: Specify the starting and ending IP address of the IP address pool. Whenever a network device requests an Internet session, the device will allocate an unused IP addresses from this pool and lease them to the device for a specified amount of time.

Default Gateway & DNS Servers: Specify the default gateway and DNS servers for your network. These settings allow your network to access the Internet

After finishing the settings above, click **Apply** to submit the changes.

Note: Under Manual Config setting, after DHCP Server takes effect, your configuring PC will need to renew its IP address to connect to the device.

System Overview	WAN	LAN	Wireless LAN (WLAN)	Filter	Forwarding	Administration
This page configures the LAN interface. It also applies on Wireless LAN interface.						
General		MAC Address 02:00:00:00:00:00 Protocol <input type="checkbox"/> Manual Config <input checked="" type="checkbox"/> DHCP Client				
Manual Config		IP Address [192.168.1.1] Subnet Mask [255.255.255.0] Default Gateway [192.168.1.1]				
DHCP Server		Services <input checked="" type="checkbox"/> Enable <input type="checkbox"/> Disable DHCP Lease Time [15] hours IP Pool Range [192.168.1.100] - [192.168.1.254] DNS Servers [] [] []				
<input type="button" value="Apply"/> <input type="button" value="Cancel"/>						

Figure 4-12 Bridge Mode-Manual Config

4.5 Wireless LAN (2.4G) Configuration

The Wireless Broadband Router implements Access Point capability which connects wireless clients to a wired LAN. It allows wireless nodes to access network resources and share the broadband Internet connection. With the default values, the router (Access Point) can be easily associated by a wireless client. We suggest that you customize the wireless settings to prevent unauthorized association.

► Basic Configuration

Access Point Name: The name used for identifying the Access Point. The default value is **11g AP**.

SSID: Service Set ID. It uniquely identifies a logical network domain name of your WLAN. The default value is **11g AP**.

Network Type: An **“Open”** AP will periodically broadcast its SSID to allow the wireless clients to recognize their presence. However, this creates a security hole since any wireless station with SSID set to “any” or got the broadcast may associate to your AP. It is recommended to set this option to **Closed** to have your AP only accept stations whose SSIDs are the same as this AP.

Country: Select the country where you use this AP. When the country setting is changed, the AP scans only the legal frequency channels allowed in that regulatory domain.

Channel ID: The radio frequency used for communication. Available channels vary according to the regulations in the country you specified in the **Country** drop-down list. Select a channel out of the available channels or use the default channel.

► Security

Data Encryption (WEP Mode): Select whether to use WEP (Wired Equivalent Privacy), an authentication algorithm which encrypts your data and protects your wireless network against eavesdropping.

- **Off:** The data is not encrypted when it is transferred from one station to another. This is the default. For security concern, we strongly suggest you enable WEP function.
- **On:** The data is encrypted by the default key (with its radio button selected) before being transmitted. If WEP is set to **On**, you should proceed to enter WEP keys.

Authentication Mode: Select **Open System** or **Shared Key** or **Shared Key only**.

Authentication is a process in which the AP validates if wireless clients are qualified to access the AP's service. This happens **prior** to any wireless client can associate to an AP. The IEEE 802.11 defines two types of algorithms in authentication: the "Open System" and "Shared Key".

- **Open System:** The authentication is done through a pseudo process, accepting all kinds of requests, mainly used in cases where connectivity is more important than security.
- **Shared Key :** Utilizes WEP capability to further verify if a wireless client is authorized to share this AP's resource. If the client has the wrong key or no key, it will fail authentication and will not be allowed to associate with the AP.

If you select **Open System** or **Shared Key**, wireless stations with or without correct WEP keys can be authenticated by the AP.

Yet if **Shared Key only** is selected, you must enable WEP function and define your WEP keys. The keys are used both to authenticate wireless clients and encrypt outgoing data.

WEP Keys: Enter one to four WEP keys in either ASCII or Hexadecimal format. You can use 64 bits or 128 bits as the encryption algorithm. The higher the bit number, the greater the complexity and the security of the encryption.

Note that when using Hexadecimal format, only digits 0-9 and letters A-F, a-f are allowed. Valid key length for each encryption type is as below:

	HEX Format	ASCII Format
64 Bit	10 hexadecimal digits	5 ASCII characters
128 Bit	26 hexadecimal digits	13 ASCII characters

Specifying a default key to encrypt outgoing data

Aside from entering your WEP keys, you should select one of the entered keys to encrypt the data before being transmitted. The AP always transmits data encrypted using this WEP Key. The key number (1,2,3,4) is also transmitted. The receiving station will use the key number to determine which key to use for decryption. If the key value does not match with the transmitting station, the decryption will fail. To ensure successful decryption, have your wireless stations set identical key tables.

Note: All Wireless Stations must use identical encryption algorithm level and Key values (same key position in its key table) to ensure successful data transmission.

► Access Control

MAC Address Access Control: This AP has the capability to control the wireless client access based on the MAC address of a wireless client. We offer you the flexibility to customize your own control policy based on these options:

- **Allow:** If selected, only the wireless client whose MAC address is in the **Allow List** is allowed to access this AP.
- **Deny:** If selected, only the wireless client whose MAC address is in the list cannot access this AP. Others clients are granted access.
- **Disable:** No access control. All the clients are allowed to access this AP.

When entering MAC address in the list, up to 16 MAC entries are allowed.

► Advanced Configuration

We suggest you not to modify the Advanced parameters unless specific requirement is required. The parameters are described as below:

Beacon Interval: Defines the periodic interval at which the Access Point sends out a beacon.

RTS Threshold: Request to send threshold. It specifies the packet size beyond which the AP invokes its RTS/CTS mechanism. Packets that exceed the specified RTS threshold trigger the RTS/CTS mechanism.

Fragment Threshold: It determines whether packets will be fragmented and at what size. On an 802.11 wireless LAN, packets exceed the fragmentation threshold are fragmented, i.e., split into, smaller units suitable for the circuit size. On the other hand, packets smaller than the specified fragmentation threshold value are not fragmented.

DTIM: Specifies the Deferred Traffic Indicator Map (DTIM) period. This value determines at which interval the AP will send its broadcast traffic. The default value is 3.

Rate: The default setting, **Auto**, allows the AP to automatically use the fastest possible data rate. Selecting a specific rate forces the AP to transmit at a particular speed.

Basic Rate Set: The **Default** option uses 1 or 2 Mbps for 802.11b and 6, 12 or 24Mbps for 802.11g as the basic rate of your wireless network. The **All** option uses 1, 2, 5.5, 6, 9, 11, 12, 18, 24, 36, 48, or 54Mbps. The wireless clients must support the basic rate to successfully associate with the AP.

54g™ Mode: 54g is Broadcom's latest wireless technology which offers the fastest possible data rate of 54Mbps under 802.11g draft specification. This item allows you to choose from these communication options:

- **54g Auto:** Both 802.11g and 802.11b clients can communicate with this AP. The data rate will be automatically adjusted.

- **54g Performance:** Only 802.11g wireless clients can communicate with the AP.
- **802.11b Only:** Only 802.11b clients can communicate with the AP.

This page configures the IEEE 802.11g/4GHz Wireless LAN interface.

System Overview	WLAN	Wireless LAN 802.11g	Status	Forwarding	Administration																		
<p>Basic: Configuration Not Suggested</p> <p>System Profile Name: <input type="text" value="11g AP"/></p> <p>VLAN: <input type="text" value="11g AP"/></p> <p>Network Type: <input type="text" value="Open"/></p> <p>Country: <input type="text" value="Australia"/></p> <p>Channel ID: <input type="text" value="11"/></p>																							
<p>Security: Configuration Not Suggested</p> <p>State Encryption (WEP): <input type="text" value="ON"/></p> <p>Authentication Mode: <input type="text" value="Open System or Shared Key"/></p> <p>WEP Keys:</p> <p>#1: <input type="text"/></p> <p>#2: <input type="text"/></p> <p>#3: <input type="text"/></p> <p>#4: <input type="text"/></p>																							
<p>Access Control: Configuration Not Suggested</p> <p>MAC Address Access Control: <input type="text" value="Allow"/> <input type="text" value="Deny"/> <input type="text" value="Disable"/></p> <p>MAC List:</p> <table border="1"> <thead> <tr> <th>MAC Address</th> <th>MAC Address</th> </tr> </thead> <tbody> <tr><td><input type="text"/></td><td><input type="text"/></td></tr> <tr><td><input type="text"/></td><td><input type="text"/></td></tr> <tr><td><input type="text"/></td><td><input type="text"/></td></tr> <tr><td><input type="text"/></td><td><input type="text"/></td></tr> <tr><td><input type="text"/></td><td><input type="text"/></td></tr> <tr><td><input type="text"/></td><td><input type="text"/></td></tr> <tr><td><input type="text"/></td><td><input type="text"/></td></tr> <tr><td><input type="text"/></td><td><input type="text"/></td></tr> </tbody> </table>						MAC Address	MAC Address	<input type="text"/>	<input type="text"/>	<input type="text"/>	<input type="text"/>	<input type="text"/>	<input type="text"/>	<input type="text"/>	<input type="text"/>	<input type="text"/>	<input type="text"/>	<input type="text"/>	<input type="text"/>	<input type="text"/>	<input type="text"/>	<input type="text"/>	<input type="text"/>
MAC Address	MAC Address																						
<input type="text"/>	<input type="text"/>																						
<input type="text"/>	<input type="text"/>																						
<input type="text"/>	<input type="text"/>																						
<input type="text"/>	<input type="text"/>																						
<input type="text"/>	<input type="text"/>																						
<input type="text"/>	<input type="text"/>																						
<input type="text"/>	<input type="text"/>																						
<input type="text"/>	<input type="text"/>																						
<p>Advanced: Configuration Not Suggested</p> <p>Beacon Interval: <input type="text" value="100"/> (1.02 sec)</p> <p>RTS Threshold: <input type="text" value="2347"/> (bytes)</p> <p>Fragment Threshold: <input type="text" value="2346"/> (bytes)</p> <p>RTM Interval: <input type="text" value="1"/></p> <p>Rate: <input type="text" value="Auto"/></p> <p>Basic Rate Set: <input type="text" value="Default"/></p> <p>802.11 Mode: <input type="text" value="54g Auto"/></p> <p><input type="button" value="Apply"/> <input type="button" value="Cancel"/></p>																							

Figure 4-13 Wireless LAN Configuration

4.6 Filters

When your Wireless Broadband Router operates as a router, the built-in NAT function provides your LAN with the Internet access via the single public IP of the WAN port. That means all network devices are allowed to access various Internet service. Under this circumstance, network security becomes an important issue and system administrators may need to build access control to protect the network.

The filter feature serves as a basic firewall security measure for your network. When filter function is enabled, the Wireless Broadband Router inspects all data packets arrive from LAN side and determines if packets are allowed to pass through the WAN port depending on whether packets match your filter rules and whether your filter type is Listed Pass or Listed Block.

In addition to filter settings, the Filters page also allows to configure other firewall settings, including WAN Management, WAN Port Ping Reply and Report Log to TFTP Server.

Specifying Your IP Filter Rules

If you are going to specify your filter rules, follow the procedures below:

1. In the **Firewall** item, select the **Enable** option.
2. In the **Filter Type** item, select the action (**Listed Pass** or **Listed Block**) to be performed on the IP packets matching your filter rules.
3. In the four filter types, select whether to enable or disable each filter.
4. If a filter is enabled, enter the criteria in provided fields. Click **More** to add more criteria if required. See next section for more information.
5. Click **Apply** to commit your changes.

Filter Types

When setting up filter rules, you can define the Filter rules based on the LAN machine's MAC address, IP address or the protocol type of the data packet. Each filter type is described as below.

Note: Based on OSI reference model, MAC Filters demand higher priority than IP Filters while IP Filters higher than Port Filters.

MAC Filters: The MAC address of the LAN machine from which packets are allowed (or prohibited) to pass through the WAN port. Up to 12 entries are allowed.

IP Filters: The range of IP addresses of the LAN machines from which packets are allowed (or prohibited) to pass through the WAN port. You may enter the same address in both (Start and End) fields to define a single IP address. Up to 5 entries are allowed.

TCP Port Filters: Allows (or prohibits) certain LAN machine to use TCP based service in the specified port range through the WAN port. Up to 12 entries are allowed.

For example, to allow (or prohibit) local PC 192.168.1.210 to use FTP service (using TCP port 21):

IP Address	Start	End
192.168.1.210	20	21

UDP Port Filters: This field allows you to allow (or prohibit) certain LAN machine to use UDP based service in the specified port range through the WAN port. Up to 12 entries are allowed.

For example, to allow (or prohibit) local PC 192.168.1.210 to use ping service (using UDP port 53):

IP Address	Start	End
192.168.1.210	53	53

Filter Scenario of the Wireless Broadband Router

When setting up your firewall policy, note the filter scenario used by the router:

When Filter Type is **Listed Block**:

If all the filters are **disabled**: No filter rule is specified to block any packet. All packets can pass through the WAN port. (Defaults)

If any filter is **enabled**: only the packets matching the specified rule are blocked; other packets can pass through the WAN port.

When Filter Type is **Listed Pass**:

If all the filters are **disabled**: No filter rule is specified to allow any packet to pass. All packets are blocked.

If any filter is **enabled**: Only the packets matching the specified rule can pass; other packets are blocked.

Figure 4-14 Filters

Viewing Filter Log

When filter feature is enabled, the router will keep a record of the packets discarded. To view the firewall activity log, go to **System Overview > Firewall > Activity Log** and click the **Show Log** button. Filter activity log is displayed in a separate window with a maximum of 32 entries. Clicking the **Update** button allows to refresh the log with newly reported data. The log types are defined as below:

Type	Description
1	Blocked packets, from WAN side, by DoS (Deny of Service) protection mechanism.
2	Blocked packets, from LAN side, by MAC/IP/TCP/UDP filter.

Other Firewall Settings

WAN Management: Available only when Firewall is enabled. If available, this item is disabled by default that rejects any external access from the WAN port. If this option is enabled, a **WAN Port** field is displayed with the default value 80. If required, you may enter another port number used by the external WAN access.

If WAN Management is enabled using a non-80 port, the router's HTTP service (Web Configuration Utility) will be accessible via the router's WAN port IP address following by a colon and the non-80 port:

`http://<WAN IP address>:<non-80 port>`

For example, if 1234 is entered, a remote user can access and configure the router at `http://203.1.2.3:1234` where 203.1.2.3 indicates the WAN port's IP address.

If WAN Management is enabled using standard port 80, no suffix is required.

If WAN Management is enabled using port 80, your publicly accessible Web server (if any) on LAN side should use a non-80

HTTP port. And you need to use the Forwarding feature to shift external HTTP requests to the non-80 port number used by the Web server on LAN side.

WAN Port Ping Reply: Available only when Firewall is enabled. If available, this setting determines if an external host will get reply when trying to ping the IP address of your WAN port. It's disabled by default.

Report Log to TFTP Server: Available only when Firewall is enabled. If available, it specifies whether to report firewall event log to your TFTP server. If enabled, a **LAN TFTP Server** field is present for you to specify the IP address of the TFTP server. All the filter logs are sent to TFTP server although only 32 entries are displayed in **Show Log** window (see **System Overview** page).

4.7 Forwarding

This page allows you to configure the Forwarding and DMZ (De-Militarized Zone) features. Unlike Filter which governs outgoing traffic, Forwarding is used to provide external access to your local machines. This is commonly used when you have publicly accessible virtual servers on your local network.

By default, forwarding entry is empty and any external access to your LAN is blocked. Once you define a forwarding entry, incoming packets (identified by its port number) that match your Forwarding criteria will be forwarded to the port range of the specified local machine. Otherwise packets are blocked. Forwarding serves as a measure of security that protects your network from hazardous packets.

However, if you designate a DMZ sever, incoming packets that do not match the forwarding criteria will be redirected to the DMZ IP address. That is, forwarding demands a higher priority than DMZ.

Setting Up Forwarding Entries

To set up your forwarding entries, enter these fields:

DMZ IP Address: DMZ setting allows a local machine to be exposed to the Internet. If you specify a DMZ host here, the incoming packets containing no port information specified in the Forwarding table are forwarded to the DMZ host.

TCP Port Forwards: In the first **Start** and **End** fields, define the port range for the incoming TCP service you want to forward. In the **IP Address** field, enter the IP address of the virtual server to which packets are forwarded. The **Start/End** fields on right side define the port range for the TCP service on the virtual server.

For example, you have a virtual server 192.168.1.210 running FTP service and you allow external access by the setting below:

Start	End	IP Address	Start	End
20	21	192.168.1.210	20	21

UDP Port Forwards: The configuration is the same as setting TCP Port Forwards, only that the entry applies to UDP service.

When the router gets outside TCP/UDP requests destined for the WAN port, it determines whether the services are allowed according to your forwarding settings. For example, if you do not specify FTP virtual service in Forwarding table, incoming FTP requests (identified by port number in packets) are blocked or otherwise sent to DMZ host (if specified). On the other hand, if an FTP forwarding entry has been set up, the FTP requests will be able to be forwarded to the specified machine.

If you have a Web server on your network...

If you enable WAN Management (i.e., allow external access from the WAN port, see “4.6 Filters”) and want to designate another Web server on your local network, take either of the procedures below to avoid port confliction:

Option 1: In Filters page, with **WAN Management** enabled, enter a port number other than 80 (for example, 1234) and reserve the number 80 for your Web server.

If any external host wants to access your Web management server through the WAN port, it should use the address below:

http://204.71.200.143 (i.e., the WAN IP address):1234

Option 2: Have **WAN Management** to use the standard port number 80 and your Web server (e.g., 192.168.1.4) to use another port number (e.g., 8080). In this case, you need to shift the incoming HTTP request (destined for local Web server) to port 8080 of your Web server, the forwarding entry may look like this:

Start	End	IP Address	Start	End
8080	8080	192.168.1.4	8080	8080

With the settings above, an external host trying to access your local Web server should use the address like this:

http://204.71.200.143 (i.e., the WAN IP address):8080

If you do not enter the suffix “:8080”, the external host's packets will contain the standard port number 80 and the router will not forward the packets since no forwarding entry matches. As a result, if a WAN computer tries to access the LAN's Web server, it will turn to access the Web service on the WAN port, i.e., the Web Configuration Utility of the router instead.

Figure 4-15 Forwarding

4.8 Administration

► System Clock Configuration

Network administrators may want to synchronize date and time among network devices. This can be done by synchronizing the local clock to an available NTP server or manually specifying the date and time in this router for your network.

Option 1: Using an existing NTP server.

1. In **Set by** item, enable the **Network Time Protocol** option.
2. In **NTP Server** field, enter the IP address of the NTP server.
3. In **Update Interval** item, select your update interval as **1, 2** or **7 days**.
4. In **Time Zone** field, select a time zone according your geographic location.

Option 2: Specifying the router as your network NTP server.

1. In **Set by** item, enable the **Manual Setup** option.
2. Manually enter the date and time information in respective fields.

► Management Setup

Username&Password: For administration security, specify required **User Name** and **Password** and re-enter password in corresponding field for confirmation. This setting limits your Web-based manager access to users with the correct credentials. By default, the user name is empty and the password is **admin**.

► Firmware Upgrade

This option allows you to upgrade the Wireless Broadband Router with new firmware. After upgrading, your customized configuration will still exist and not reset to the factory defaults. To upgrade, download required firmware file to your host PC and follow the steps below:

1. In the **Locate New Firmware** field, click **Browse** to locate the firmware file.
2. Click the **Upgrade** button to start upgrade and then wait for a few minutes as the utility prompts. You will return to the Administration page while the process is complete.

Note: Do not interrupt the upgrade process otherwise it might cause damage to your Wireless Broadband Router.

After upgrade, you can see the new firmware version in **Current Firmware version** field.

► User Configurations

Save Current Configurations: Allows you to save your customized settings to the device. Once your router is properly configured, you may wish to save current settings. The saved settings can be retrieved easily if required, even after you reload factory defaults.

Retrieve User Configurations: If you have loaded factory defaults (either via the Load Default button on the back panel or via the Restore button in this group), you can restore your settings by clicking the **Retrieve** button.

Restore Factory Defaults: To restore factory defaults, click the **Restore** button and then wait for a few seconds as the utility prompts. You will return to the Administration page while the process is complete. This feature is basically the same as resetting via the Load Default button (see “Rear Panel and Connectors”) on the device but it allows you to remotely perform the reset task.

Important: After retrieving your desired configuration file, you must reboot the device to enable the retrieved settings.

► System

Reboot: This option allows to you remotely reboot the device.

System Overview	WAN	LAN	Wireless LAN (WLAN)	Tools	Extending	Administration
This page is for system administration.						
System Check		Current Time: 10/26/2011 00:00:00 Refresh				
Set Up:		<input checked="" type="checkbox"/> Network Time Protocol <input type="checkbox"/> Manual Setup				
Date:		<input type="text"/> Year (eg. 2000) <input type="text"/> Month (eg. 01) <input type="text"/> Day (eg. 20)				
Time:		<input type="text"/> Hour (eg. 10) <input type="text"/> Minute (eg. 00)				
Management Setup		Username: <input type="text"/>				
		Password: <input type="password"/>				
		Re-enter Password: <input type="password"/>				
		Apply Cancel				
Firmware Upgrade		Current Firmware Version: 2.10.01				
		Current Bootcode Version: 1.01.01				
		Load New Firmware: <input type="text"/> Browse Upgrade				
Reset Configuration		Save Current Configuration: Save				
		Restore Factory Defaults: Restore No				
		Restore Factory Defaults: Restore				
System		Reboot: Reboot				

Figure 4-16 Administration

5 Troubleshooting

I cannot access the Web-based configuration utility from the Ethernet computer used to configure the router.

- Check that the LAN LED is on. If the LED is not on, check that the cable for the LAN connection is securely connected.
- Check that your computer resides on the same subnet with the router's LAN IP address.
- If your computer acts as a DHCP client, check that your computer has been assigned an IP address from the DHCP server. If not, you will need to renew the IP address. See the check/renew IP address section under '3.2 Setting up TCP/IP' for instructions.
- Use the ping command to ping the router's LAN IP address to verify the connection.
- Make sure your browser is not configured to use a proxy server.
- Check that the IP address you entered is correct. If the router's LAN IP address has been changed, you should enter the reassigned IP address instead.

I can browse the router's Web-based configuration but cannot access the Internet.

- Check that the WAN LED is illuminated. If not, check the physical connection between the router and the DSL/Cable modem is OK.
- If WAN LED is illuminated, open the WAN page of the Web configuration utility and check the status group to see if the router's WAN port has successfully obtained an IP address.
- Make sure you are using the correct method (DHCP client, PPPoE client, PPTP client or Manual) as required by your ISP. Also ensure you have entered correct

settings provided by your ISP.

- For cable users, if you ISP required a fixed Ethernet card MAC address, make sure you have cloned the network adapter's MAC address to the WAN port of the router. (See the MAC Address field in WAN page.)

My wireless client cannot communicate with another Ethernet computer.

- Ensure your wireless adapter functions properly. You may open the **Device Manager** in Windows to see if the adapter is proper installed.
- Make sure your wireless client is configured to use Infrastructure mode. Also make sure the client uses the same SSID and security settings (if enabled) with the AP.
- Ensure that the wireless adapter's TCP/IP settings are correct as required by your network administrator.
- Check that the wireless adapter's MAC address is not in the MAC address list if Access Control is enabled to use a deny list. (See Wireless LAN page in Web configuration utility.)
- If you are using a 802.11b wireless adapter, check that the 54g Mode item (in Wireless LAN page) is not configured to use 54g Performace. On the other hand, if you are using 802.11g adapter, check the 54g Mode item is not configured to use 802.11b Only.
- Use the ping command to verify the wireless client's communication with the router's LAN port and with the opposite computer. If the wireless client can successfully ping the router's LAN port but fails to ping the opposite computer, then verify the TCP/IP settings of the opposite computer.

After I retrieved my saved configuration file, the retrieved settings do not take effect.

- After you retrieved the desired file, you must reboot the router to have retrieved settings take effect.

6 Specification

6.1 Hardware

- 125MHz MIPS CPU
- 16MB SDRAM
- 4MB Flash Memory
- 802.11g: Broadcom (BCM4306, BCM2050)
- Two external antennas for wireless technology

Interface

- One 10/100 Base-TX RJ-45 auto sensing and crossover Ethernet WAN port for Broadband connection (Cable/DSL or direct Ethernet)
- Four RJ-45 LAN ports for 10/100Base-TX auto sensing & crossover Ethernet Switch LAN connection
- 802.11g wireless LAN
- Two external antennas for wireless technology

Physical

- Front Panel: 7 LEDs (Power x 1, LAN x 4, WAN x 1, Wireless x 1)
- Back Panel: Reset button, Power Jack, RJ-45 LAN Port x 4, RJ-45 WAN Port x 1
- Dimensions: 145 mm(L) x 240 mm(W) x 40 mm(H)
- Case types: Lay down

Power Adapter and Environmental Requirement

- DC Adaptor: Output 5V DC, 2A
- Temperature: 0 to 40°C (operation), -20 to 70 °C (storage)
- Relative Humidity: 5% to 90% (non-condensing)

Electromagnetic Compliance

- FCC Part 15 Class B
- CE
- EMI/Immunity: VCCI class B
- PTT: JATE

6.2 Software

WAN Port Features

- PPPoE (PPP over Ethernet) Client with Keep Alive/Connect On Demand Support
- PAP and CHAP Authentication
- DHCP Client
- MAC Address Cloning
- Settable and Changeable IP Address

LAN Port Features

- DHCP Server
- Settable and Changeable IP Address

Router Features

- NAT
- Firewall Support
- Bridge Mode Support
- 802.1D Spanning Tree Bridging
- IP Filtering, IP Forwarding
- DMZ Hosting
- DNS Forwarding
- UPNP Support
- Microsoft NetMeeting Passthrough Support
- Microsoft XP Messenger Passthrough Support

Security Features

- PAP and CHAP Authentication
- ASCII/HEX Format 64/128 Bit WEP Key for Wireless LAN
- Allow List for Wireless LAN
- Supports IP packets filtering based on IP address, port number, and protocol
- VPN Support (IPSec Passthrough, and PPTP Passthrough)

Wireless LAN Features

- Fully compatible to 802.11g standard
- Direct Sequence Spread Spectrum (DSSS) technology exploitation
- Seamless roaming within wireless LAN infrastructure
- Low power consumption via efficient power management

Configuration and Management Features

- Configurable through Web Browser via WAN/LAN
- Software Upgrade
- DHCP Server function for IP distribution to local network users
- NTP/Manual System Clock
- Configuration Saving/Retrieving
- Event Log