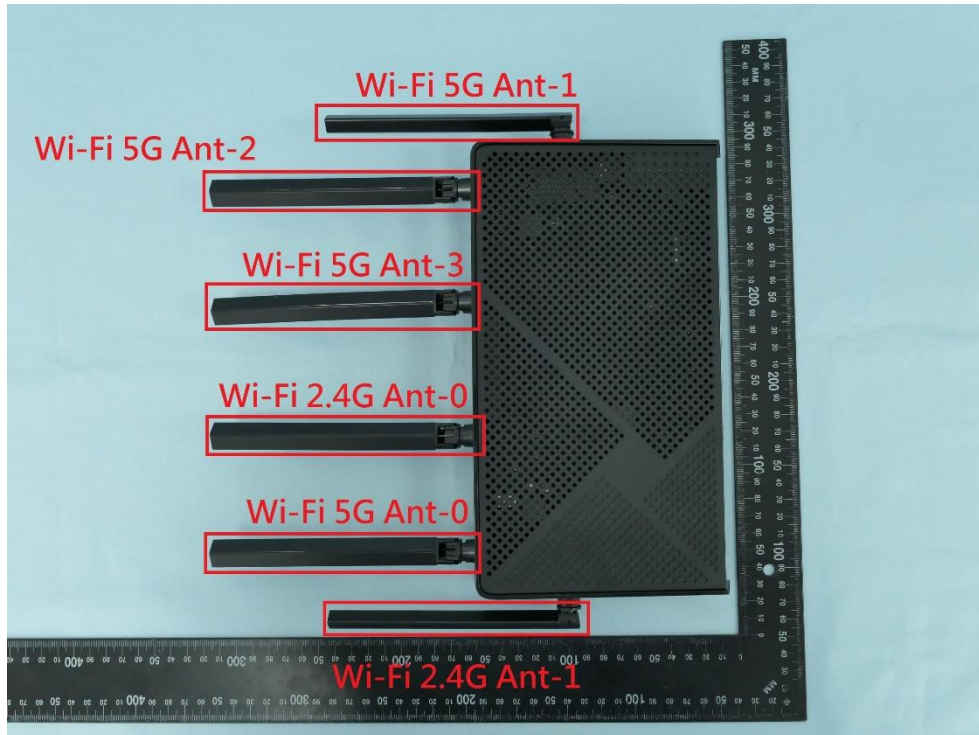
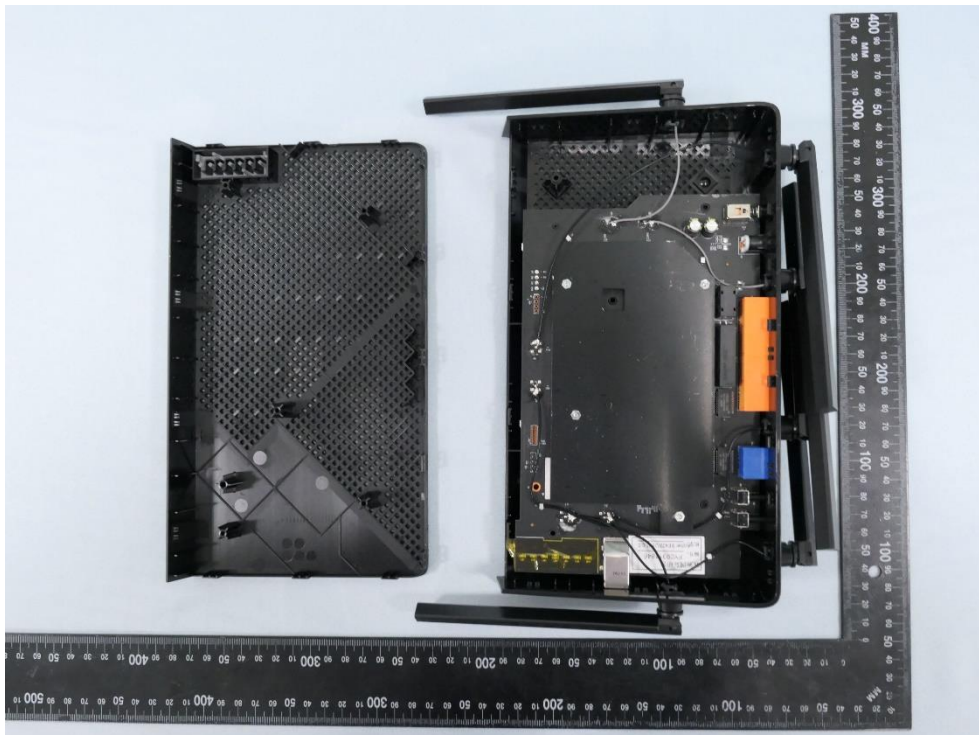


Internal Photograph

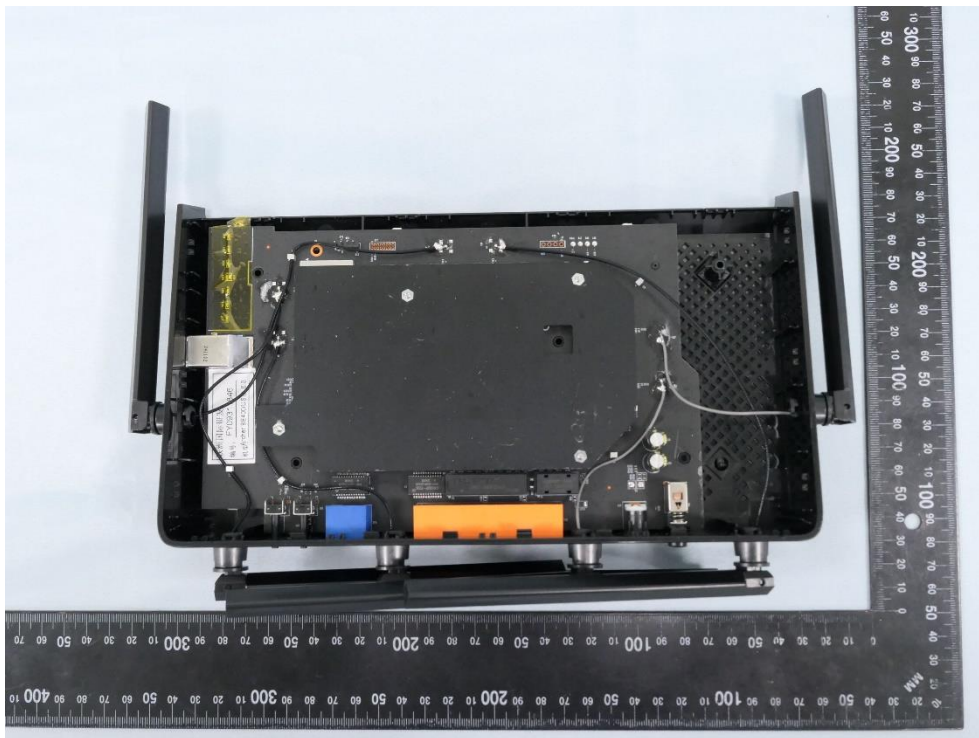
(1) EUT Photo



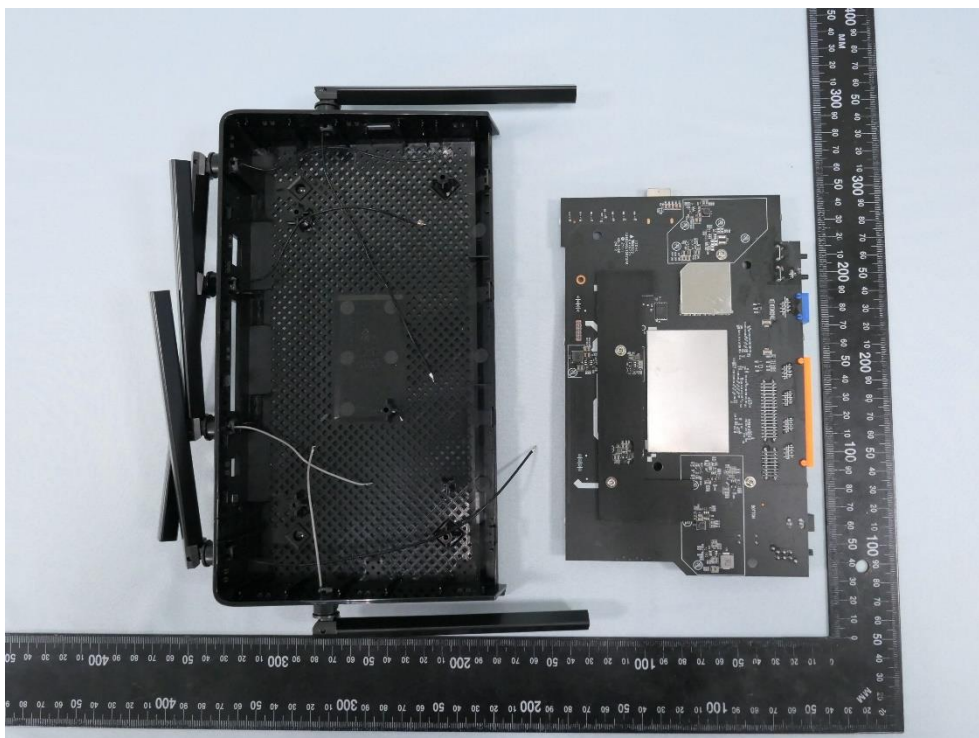
(2) EUT Photo



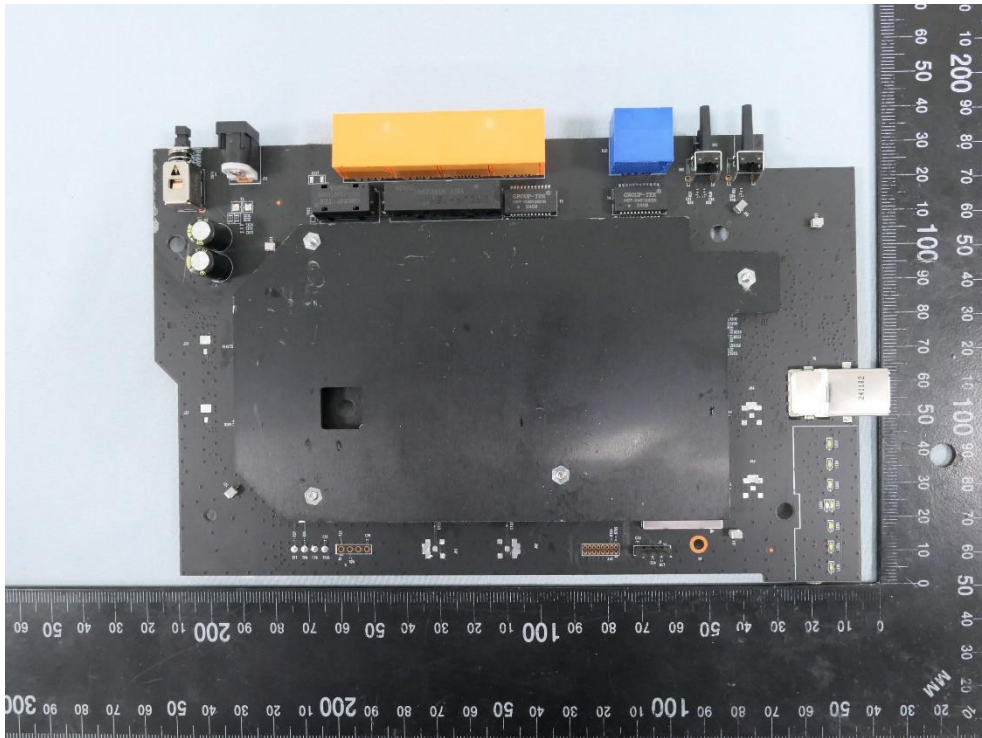
(3) EUT Photo



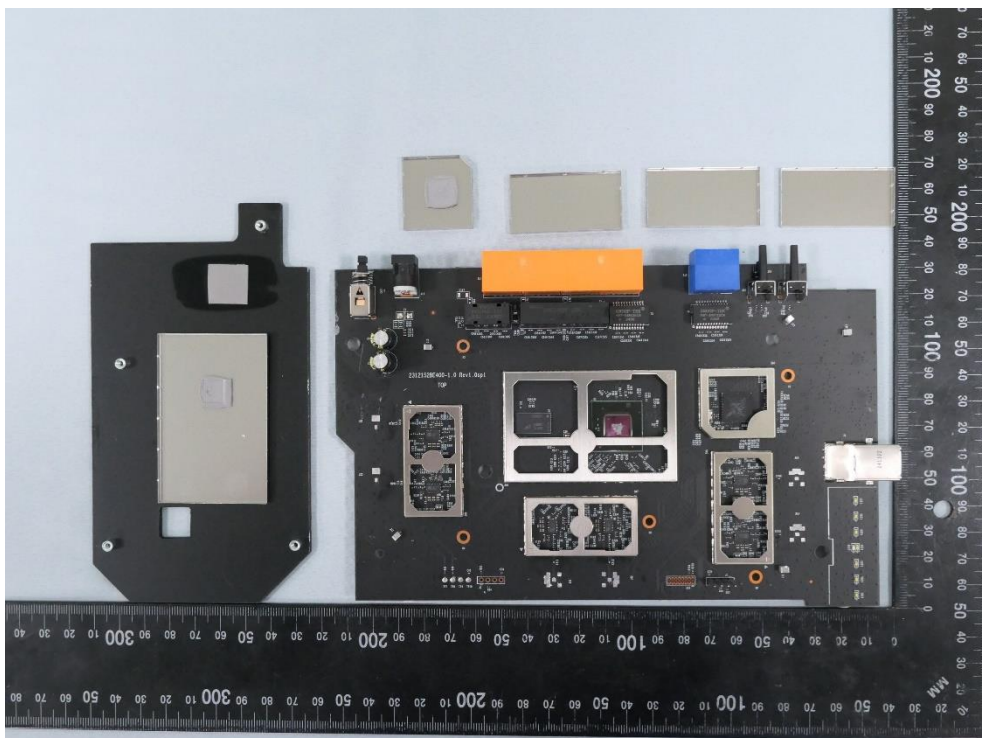
(4) EUT Photo



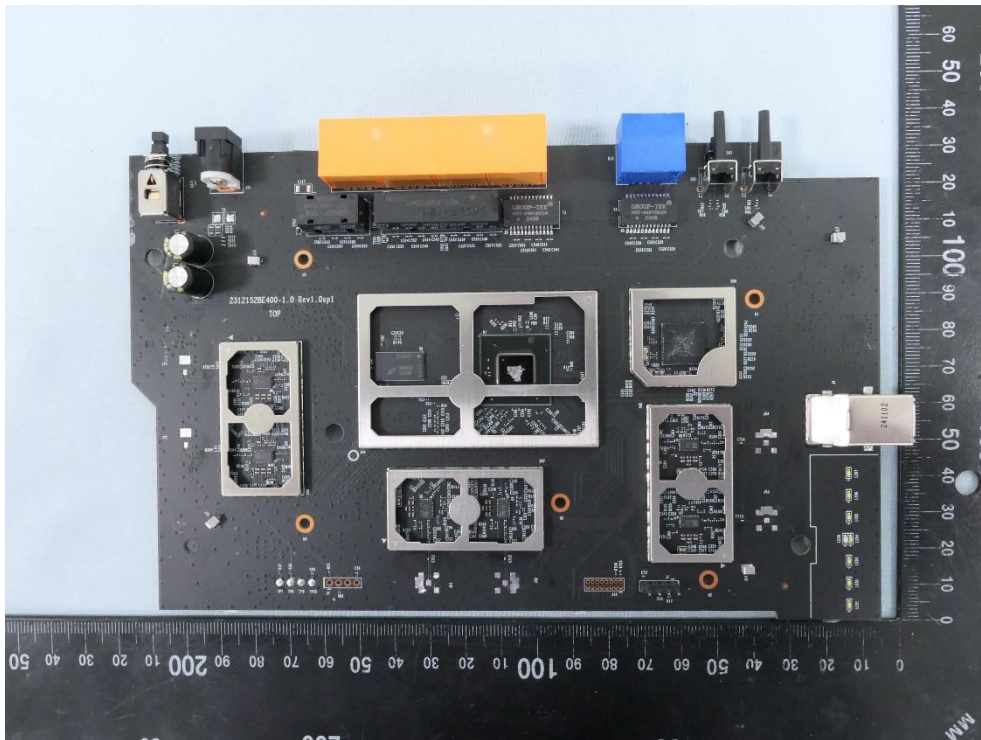
(5) EUT Photo



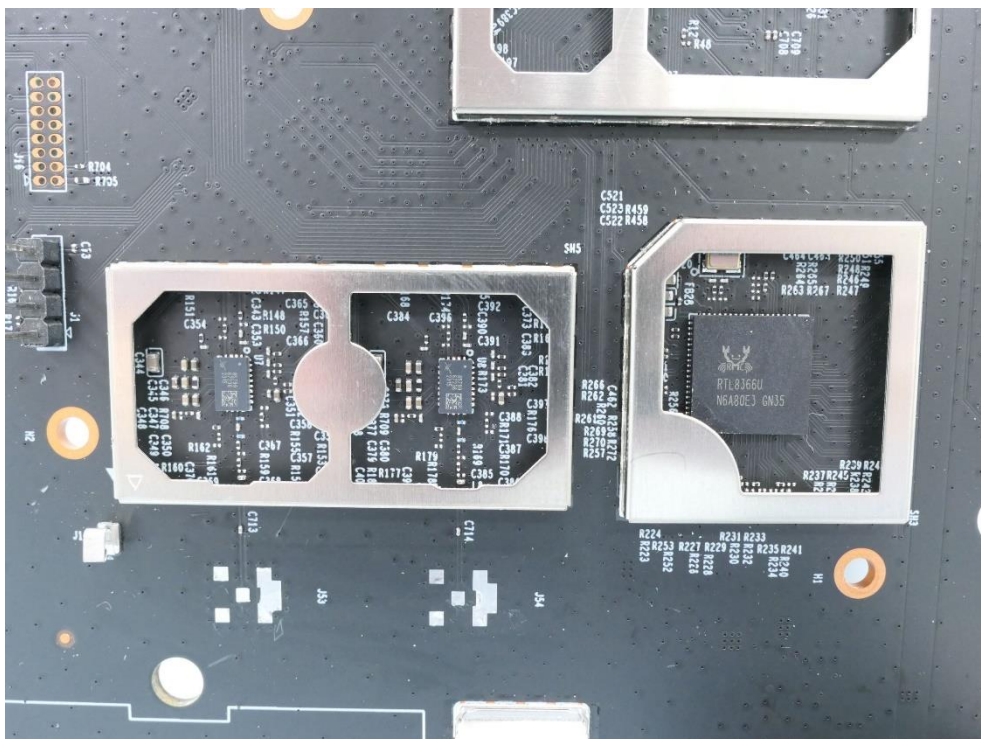
(6) EUT Photo



(7) EUT Photo

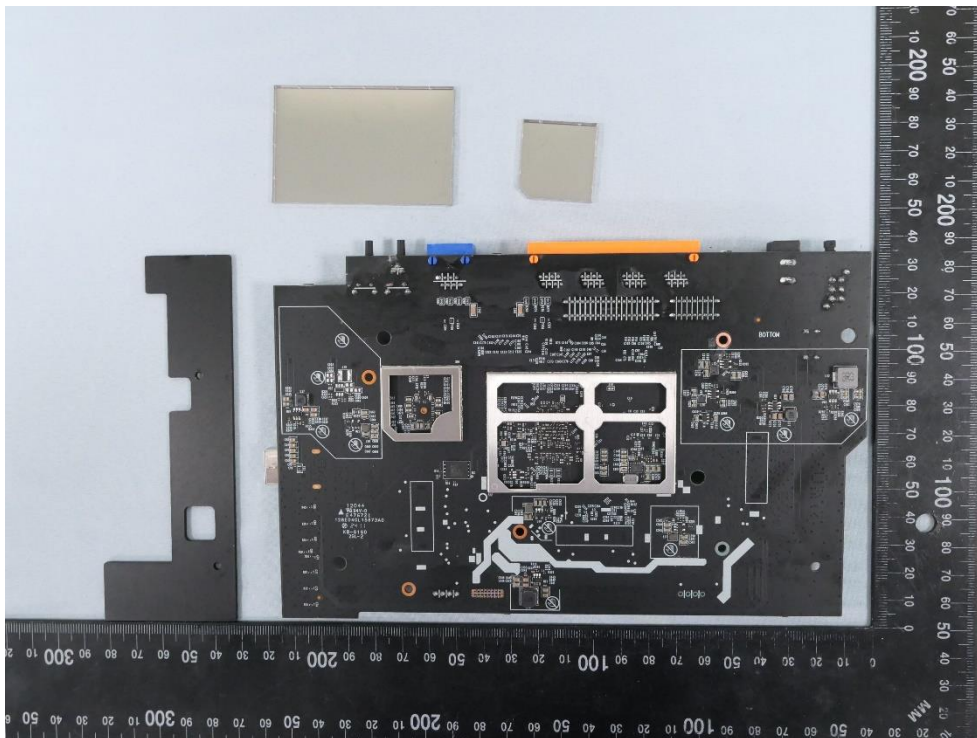


(8) EUT Photo



The image shows the underside of a laptop, revealing the internal hardware. The main components visible are the motherboard, the battery, and various electronic components like capacitors, resistors, and integrated circuits. A ruler is placed horizontally across the bottom of the image, providing a scale for the components. The ruler is marked in centimeters, ranging from 0 to 100. The laptop's chassis is black, and the internal components are mounted on a black printed circuit board (PCB). The battery is a large, rectangular, silver-colored unit in the center. The motherboard is populated with numerous electronic components, including several integrated circuits, capacitors, and resistors. The overall layout is compact and organized, typical of laptop internal design.

(13) EUT Photo



(14) EUT Photo

