



18. TEST PHOTOGRAPHS

See following Attached Pages for setup photographs.

| | | | | |
|---|---|---------------------------------------|---|--|
| FCC ID: ZNFG710TM |  | HAC (RF EMISSIONS) TEST REPORT |  | Approved by: Quality Manager |
| Filename: 1M1802260030-12 -R2.ZNF | Test Dates: 03/05/2018 - 03/07/2018 | DUT Type: Portable Handset | | Page 93 of 95 |

© 2018 PCTEST Engineering Laboratory, Inc.

REV 3.2.M
01/12/2018

© 2018 PCTEST Engineering Laboratory, Inc. All rights reserved. Unless otherwise specified, no part of this report may be reproduced or utilized in any part, form or by any means, electronic or mechanical, including photocopying and microfilm, without permission in writing from PCTEST Engineering Laboratory, Inc. If you have any questions about this international copyright or have an enquiry about obtaining additional rights to this report or assembly of contents thereof, please contact INFO@PCTEST.COM.

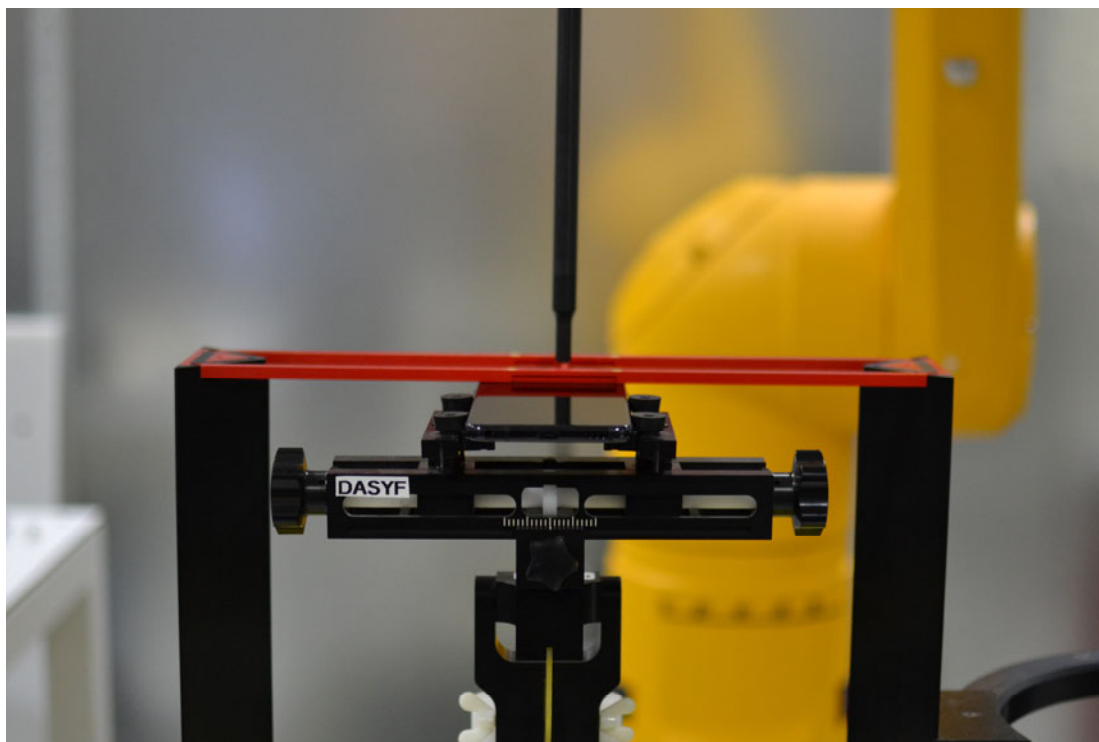


Figure 18-1
Ear Reference Point HAC Phantom Alignment

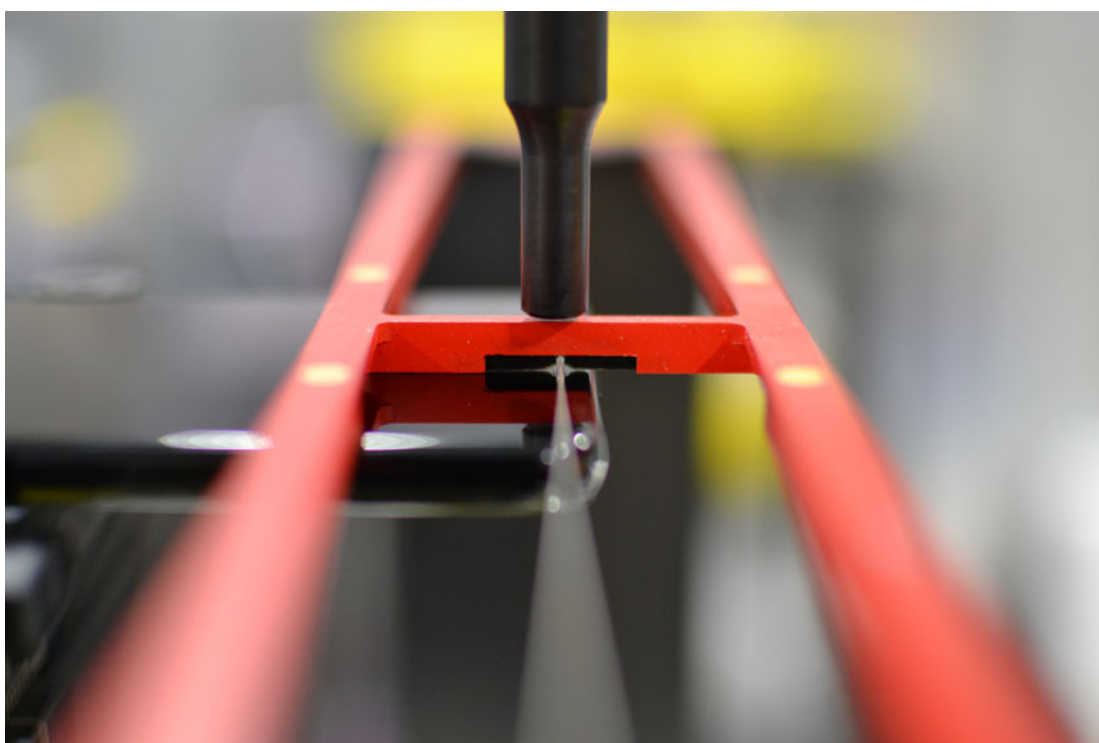




Figure 18-2
HAC Phantom Plane Alignment

| | | | | |
|---|---|---------------------------------------|---|--|
| FCC ID: ZNFG710TM |  | HAC (RF EMISSIONS) TEST REPORT |  | Approved by: Quality Manager |
| Filename: 1M1802260030-12 -R2.ZNF | Test Dates: 03/05/2018 - 03/07/2018 | DUT Type: Portable Handset | | Page 94 of 95 |

© 2018 PCTEST Engineering Laboratory, Inc.

REV 3.2.M

01/12/2018

© 2018 PCTEST Engineering Laboratory, Inc. All rights reserved. Unless otherwise specified, no part of this report may be reproduced or utilized in any part, form or by any means, electronic or mechanical, including photocopying and microfilm, without permission in writing from PCTEST Engineering Laboratory, Inc. If you have any questions about this international copyright or have an enquiry about obtaining additional rights to this report or assembly of contents thereof, please contact INFO@PCTEST.COM.

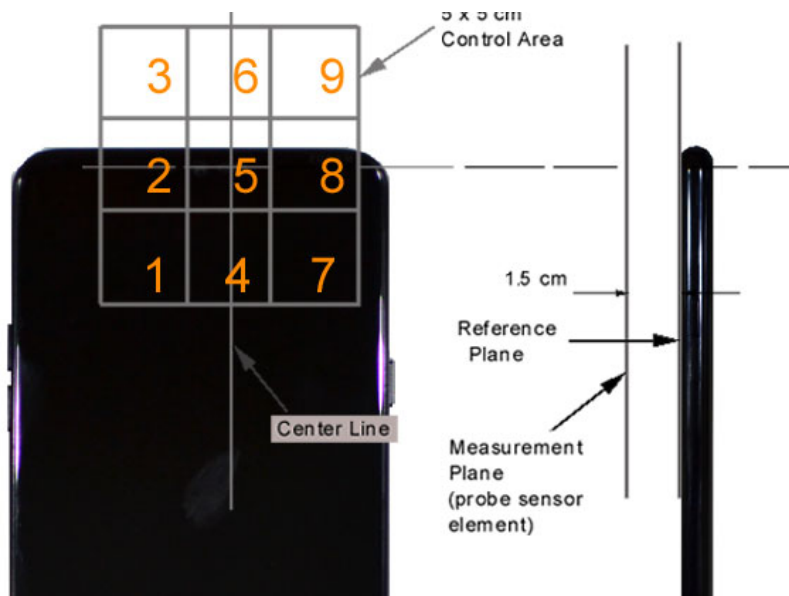


Figure 18-3 5x5 Scan grid above WD

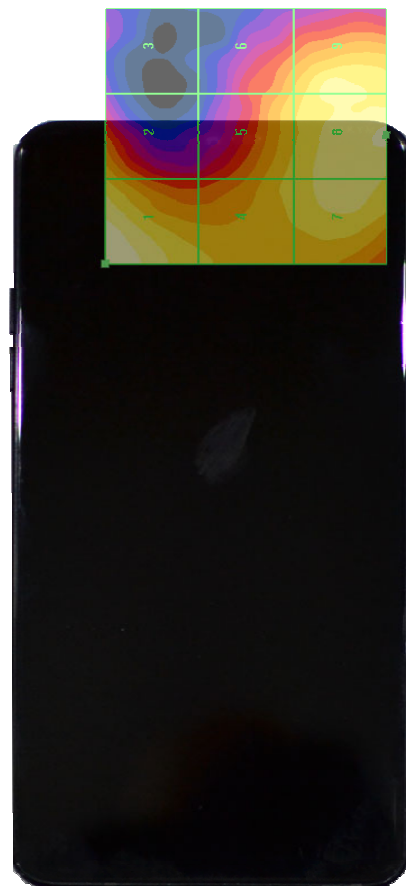




Figure 18-4 E-Field WD Scan overlay

| | | | | |
|--------------------------------------|---|--------------------------------|---|---------------------------------|
| FCC ID: ZNFG710TM |  PCTEST ENGINEERING LABORATORY, INC. | HAC (RF EMISSIONS) TEST REPORT |  LG | Approved by: Quality Manager |
| Filename: 1M1802260030-12 -R2.ZNF | Test Dates: 03/05/2018 - 03/07/2018 | DUT Type: Portable Handset | | Page 95 of 95 |