



## TransMount Image Transmission Receiver

Model name:COV-02  
UserGuide

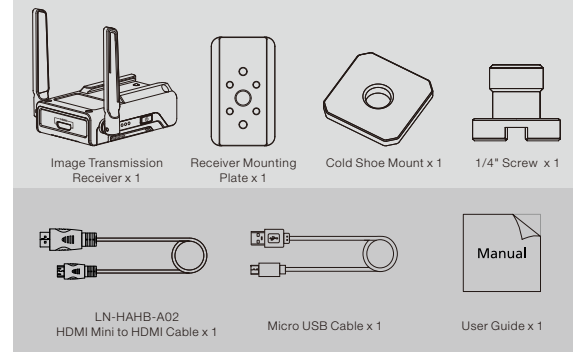
### Contents

- Packing List
- Get to Know Image Transmission Receiver
- Preparing and Charging the Battery
- WIFI Pairing
- Installation
- How to Use
  - Indicator Lights and Buttons
  - Use with Monitors
- Firmware Update
  - Download APP
- Product Specifications
- Disclaimer and Warning
  - Reading Tips
  - Warnings
  - Safe Operation Guidelines
- Warranty Card
  - Warranty Period
  - This warranty does not apply to the followings
  - Warranty Claim Procedure
- Contact Card

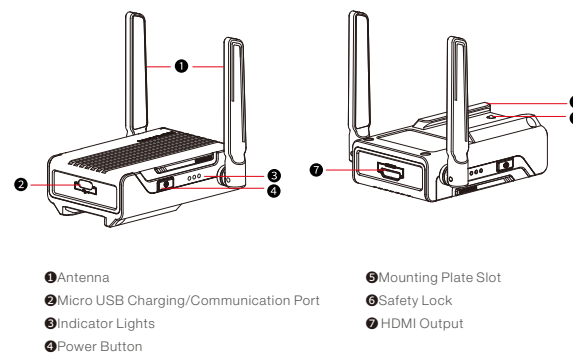
### User Guide

#### Packing List

The product package comes with the following items. In case any item is found missing, please contact ZHIYUN or your local selling agent.



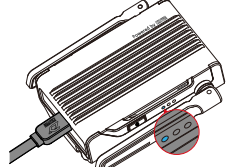
#### Get to Know Image Transmission Receiver



1 Zhiyun-tech.com

#### Preparing and Charging the Battery

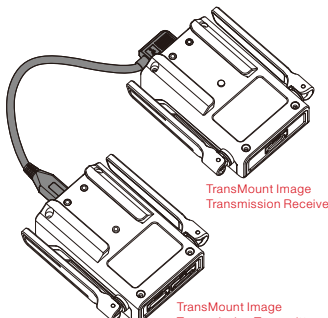
TransMount Image Transmission Receiver adopts built-in battery. When using the receiver for the first time, please fully charge the receiver to activate the battery.  
Charging method: Connect Micro USB charging/communication port of the receiver to the adapter (not provided, 5V1A is recommended) with provided Micro USB cable. Plug the adapter into a power outlet to start charging. The blue indicator light turns off when the charging is completed.



Performance of the receiver is affected by low battery so it is recommended to fully charge the device each time before use. The receiver will automatically turn off when the battery is running low.

#### WIFI Pairing

The TransMount Image Transmission Receiver has to be used together with the TransMount Image Transmission Transmitter. Please perform WIFI pairing procedure when using the receiver for the first time. Connect Micro USB Charging/Communication Ports of both receiver and transmitter with 2W-Micro-002 camera control cable that comes with the transmitter. Respectively long press power buttons of the two devices for 3 seconds to turn them on. Press the power button of receiver for 5 times to pair the two devices. The green indicator light of the transmitter will stay on when the pairing procedure is completed.  
After the initial pairing, the receiver will save the transmitter's WIFI information and automatically connect to the transmitter's WIFI in future use.



- ① The TransMount Image Transmission Transmitter can be connected to maximum 3 devices, including mobile phones, tablets and TransMount Image Transmission Receiver.
- ② In situations where the transmitter is restored to factory settings or has its WIFI password changed or updated, its firmware please perform the pairing procedure again.
- ③ One receiver can only be connected to one transmitter. Please perform the pairing procedure again if needs to connect it with another transmitter.
- ④ To facilitate the pairing process, please do not put the transmitter on the receiver or vice versa. Users may refer to the picture above to place the transmitter and the receiver during the pairing process; When connecting the receiver and mobile devices to the transmitter, please place them at least 1 meter away from the transmitter for optimal user experience.

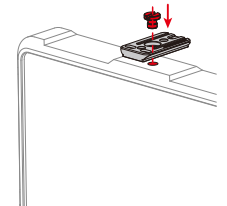
Zhiyun-tech.com 2

### User Guide

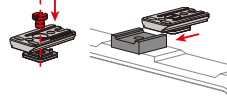
#### Installation

##### Install on Monitor and Connect Cables

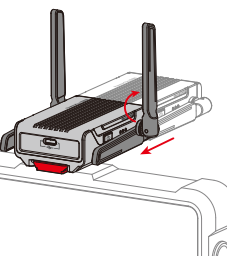
1. Mount the Receiver Mounting Plate to the 1/4" screw hole on the monitor with the 1/4" screw and then tighten the screw.



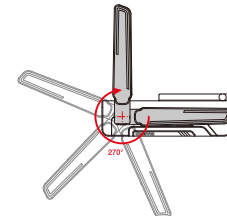
Some monitors are equipped with cold shoe where the receiver can be mounted on. In that case, mount the Receiver Mounting Plate and the provided cold shoe mount with 1/4" screw. Then mount it to the cold shoe of the monitor. Make sure to tighten the screw after the above steps.



2. Slide the receiver to the mounting plate. Push the receiver and fix it with the safety lock. Rotate the antenna 90 degrees clockwise. The installation is completed.



The antenna can only be rotated in one direction. Its maximum rotation angle is 270 degrees. Please pay attention to the rotation direction.

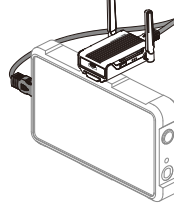


Zhiyun-tech.com 3

### User Guide

#### How to Use

3. Connect the TransMount Image Transmission Receiver and monitor with the provided LN-HAHB-A02 HDMI Mini to HDMI cable.



#### Indicator Lights and Buttons

##### Power Button [O]

- Long press for 3 seconds to power on or off the receiver.
- After connection, click the power button twice to turn on or off image transmission.
- After power on, press the button for five times to perform WIFI pairing of the receiver and the transmitter (transmitter and receiver must be connected via 2W-Micro-002 camera control cable).

##### Blue Indicator Light [●]

- Shines solid when charging.
- Stops shining when fully charged.

##### Green Light Indicator [●]

- Shines solid when turning on or WIFI is working normally.
- Blinks slow when WIFI is not ready.
- Blinks fast when pairing.
- Blinks for 3 times when turning off.

##### Red Light Indicator [●]

- Shines solid when no HDMI signal output.
- Blinks slow when the battery level is low, around 5%-20%.

#### Use with Monitors

1. Make sure receiver and transmitter are WIFI paired.
2. Connect the transmitter and camera and then turn them on; Please refer to TransMount Image Transmission Transmitter User Guide for usage of the transmitter.
3. Connect the receiver and the monitor and then turn them on.
4. The green indicator light of receiver will stay on when the connection succeeds. Click the power button of the receiver twice to live stream image to the monitor and turn off live footage streaming by clicking the power button twice.

#### Firmware Update

#### Download APP



Scan the left QR code (Android 5.0 and above, iOS 9.0 and above) or search "ZY Play" directly in the app store to download "ZY Play".

**The ZHIYUN APP is subject to regular update without notice.**

Zhiyun-tech.com 4

### User Guide

#### Method 1: Update under carrier network

1. Power on the transmitter. Turn on the carrier network on your phone.
2. Power on the receiver and wait for the green indicator light to shine.
3. Open WIFI settings on your phone. Connect the WIFI of transmitter (default password: 12345678). Open ZY Play APP and select product page of transmitter.
4. If firmware update notice prompts out on ZY APP, please tap and proceed. After successful update, the receiver will automatically turn off.

This method is only available on some phones with iOS system which are allowed to browse web pages using carrier network even when the phone connects to the WIFI of transmitter.

#### Method 2: Update under WIFI

1. Power on the transmitter.
2. Power on the receiver and wait for the green indicator light to shine.
3. Open WIFI settings on your phone and connect to transmitter's WIFI (default password: 12345678). Open ZY Play APP and select product page of transmitter. Exit ZY Play when prompt "Enter now" appears.
4. Open WIFI settings on your phone and connect the phone to an available WIFI network. Open ZY Play APP again. After a firmware update prompts in ZY Play APP, click and download the firmware file.
5. After the download is completed, go to phone's WIFI settings and connect to the transmitter's WIFI again. Go back to ZY Play APP and tap "update now" to install the newest firmware.

- ① TransMount Transmitter is needed for the receiver firmware update. Please make sure the transmitter and receiver are working normally.
- ② Please make sure the battery level of transmitter and receiver are both above 50%; Do not exit the app or run it in the background and please pay attention to the prompts of the app.

#### Product Specifications

Product model: COV-02

	Min.	Standard	Max.	Remark
Charging Voltage (Micro USB port)	-	5V	-	
Charging Current (Micro USB port)	-	1A	-	
Output Resolution	-	1080P/720P/576P/480P	-	
Output Frame Rate	-	30/29.97/25/24/23.98fps	-	
Operation Temperature	-10°C	25°C	40°C	
Battery Capacity	-	1400mAh	-	
Battery Runtime	-	1.5h	-	
Charging Time	-	1.5h	-	
Product Net Weight	-	≈135g	-	Receiver Mounting Plate included
Antenna Rotation Range	-	270°	-	Single rotation direction only
Transmission Distance	-	0-100m	-	non-blocking and non-interrupted

#### Disclaimer and Warning

Thank you for purchasing TransMount Image Transmission Receiver ("the receiver"). The information contains herein affects your safety, legitimate rights and obligation. Please read this instruction carefully to ensure proper configuration before use. Failure to read and follow this instruction and warnings herein may result in serious injury to you or bystanders, or damage to your device or property. Gulin ZhiShen Information Technology Co., Ltd reserves all rights for final explanation on this instruction and other documents related to the receiver. The information is subject to update without notice. Please visit www.ZHIYUN-tech.com to obtain the latest product information.

By using this product, you hereby signify that you have read this document carefully and that you understand and agree to abide by the terms and conditions herein. You agree that you are solely responsible for your own conduct while using this product, and for any consequences thereof. You agree to use this product only for purposes that are proper and in accordance with all terms, precautions, practices, policies and guidelines ZHIYUN has made and may make available.

Zhiyun-tech.com 5

### User Guide

#### Method 1: Update under carrier network

1. Power on the transmitter. Turn on the carrier network on your phone.
2. Power on the receiver and wait for the green indicator light to shine.
3. Open WIFI settings on your phone. Connect the WIFI of transmitter (default password: 12345678). Open ZY Play APP and select product page of transmitter.
4. If firmware update notice prompts out on ZY APP, please tap and proceed. After successful update, the receiver will automatically turn off.

This method is only available on some phones with iOS system which are allowed to browse web pages using carrier network even when the phone connects to the WIFI of transmitter.

#### Method 2: Update under WIFI

1. Power on the transmitter.
2. Power on the receiver and wait for the green indicator light to shine.
3. Open WIFI settings on your phone and connect to transmitter's WIFI (default password: 12345678). Open ZY Play APP and select product page of transmitter. Exit ZY Play when prompt "Enter now" appears.
4. Open WIFI settings on your phone and connect the phone to an available WIFI network. Open ZY Play APP again. After a firmware update prompts in ZY Play APP, click and download the firmware file.
5. After the download is completed, go to phone's WIFI settings and connect to the transmitter's WIFI again. Go back to ZY Play APP and tap "update now" to install the newest firmware.

- ① TransMount Transmitter is needed for the receiver firmware update. Please make sure the transmitter and receiver are working normally.
- ② Please make sure the battery level of transmitter and receiver are both above 50%; Do not exit the app or run it in the background and please pay attention to the prompts of the app.

#### Product Specifications

Product model: COV-02

	Min.	Standard	Max.	Remark
Charging Voltage (Micro USB port)	-	5V	-	
Charging Current (Micro USB port)	-	1A	-	
Output Resolution	-	1080P/720P/576P/480P	-	
Output Frame Rate	-	30/29.97/25/24/23.98fps	-	
Operation Temperature	-10°C	25°C	40°C	
Battery Capacity	-	1400mAh	-	
Battery Runtime	-	1.5h	-	
Charging Time	-	1.5h	-	
Product Net Weight	-	≈135g	-	Receiver Mounting Plate included
Antenna Rotation Range	-	270°	-	Single rotation direction only
Transmission Distance	-	0-100m	-	non-blocking and non-interrupted

#### Disclaimer and Warning

Thank you for purchasing TransMount Image Transmission Receiver ("the receiver"). The information contains herein affects your safety, legitimate rights and obligation. Please read this instruction carefully to ensure proper configuration before use. Failure to read and follow this instruction and warnings herein may result in serious injury to you or bystanders, or damage to your device or property. Gulin ZhiShen Information Technology Co., Ltd reserves all rights for final explanation on this instruction and other documents related to the receiver. The information is subject to update without notice. Please visit www.ZHIYUN-tech.com to obtain the latest product information.

By using this product, you hereby signify that you have read this document carefully and that you understand and agree to abide by the terms and conditions herein. You agree that you are solely responsible for your own conduct while using this product, and for any consequences thereof. You agree to use this product only for purposes that are proper and in accordance with all terms, precautions, practices, policies and guidelines ZHIYUN has made and may make available.

Zhiyun-tech.com 6

### User Guide

ZHIYUN accepts no liability for damage, injury or any legal responsibility incurred directly or indirectly from the use of this product. Users shall observe safe and lawful practices including, but not limited to, those set forth herein.

ZHIYUN™, TransMount™ are the trademarks of Gulin ZhiShen Information Technology Co., Ltd. (hereinafter referred to as "ZHIYUN" or "ZHIYUN TECH") and its affiliates. All product names or trademarks referred to herein are trademarks or registered trademarks of their respective holders.

#### Reading Tips

Legends: Hints and Tips Important

Scan the QR code and operate under carrier network may cause traffic fee which will be charged by your carrier. It is recommended to operate under WIFI.

#### Warnings

Read the ENTIRE User Guide to become familiar with the features of this product before operating. Failure to operate the product correctly can result in damage to the product or personal property and cause serious injury. This is a sophisticated product. It must be operated with caution and common sense and requires some basic mechanical ability. Failure to operate this product in a safe and responsible manner could result in injury or damage to the product or other property. This product is not intended for use by children without direct adult supervision. DO NOT use with incompatible components or in any way otherwise as mentioned or instructed in the product documents provided by ZHIYUN. The safety guidelines herein contain instructions for safety, operation and maintenance. It is essential to read and follow all of the instructions and warnings in the User Guide, prior to assembly, setup or use, in order to operate the product correctly and avoid damage or serious injury.

#### Safe Operation Guidelines

##### CAUTION:

1. The receiver is a high-precision control device. Damage may be caused to the receiver if it is dropped or subject to external force, and this may result in malfunction.
2. The receiver is not waterproof. Prevent contacts of any kind of liquid or cleaner with the receiver. It is recommended to use dry cloth for cleaning.
3. Protect the receiver from dust and sand during use.

##### WARNING:

To avoid fire, serious injury, and property damage, observe the following safety guidelines when using, charging, or storing your batteries.

##### Battery Use

Please fully charge the receiver before use every time.

##### Battery Charging

The battery will automatically stop charging once it is full. Please disconnect the battery and the charger when fully charged.

##### Battery Storage

1. If the receiver is not used for over 10 days, please discharge the battery to 40%-65% before storage in order to extend the battery lifespan.
2. When the battery voltage is too low, the battery will enter low consumption mode. Charge the battery to exit low consumption mode.

##### Battery Maintenance

1. Do not over-charge or over-discharge the battery, which will damage the battery;
2. The battery performance will be affected for not being used for a long time;
3. Never use the battery when the temperature is too high or too low;
4. Fully charge and discharge the battery every three months to maintain the battery health.

##### Battery Disposal

1. Please fully discharge the battery before putting it in the designated recycling bin. Batteries contain hazardous constituents and it is forbidden to put the battery in general waste bin. For related details please abide by the local laws and regulations on battery recycling and disposal.
2. If the battery cannot be fully discharged, never put it in battery recycling bin. Please contact battery recycling companies for a proper solution.

##### Warranty Period

1. Customers are entitled to replacement or free repair service in case of quality defect(s) found in the product within 15 days upon receipt of the product.
2. Customers are entitled to free repair service from ZHIYUN for any product proven defective in material or workmanship that results in product failure during normal consumer usage and conditions within the valid warranty period, which is 12 months counting from the date of delivery.

Zhiyun-tech.com 7

### Warranty Card

#### This warranty does not apply to the followings

1. Products subjected to unauthorized repair, misuse, collision, neglect, mishandling, soaking, accident, and unauthorized alteration.
2. Products subjected to improper use or whose labels or security tags have been torn off or altered.
3. Products whose warranty has expired.
4. Products damaged due to force majeure, such as fire, flood, lightning, etc.

#### Warranty Claim Procedure

1. If failure or any problem occurs to your product after purchase, please contact a local agent for assistance, or you can always contact ZHIYUN's customer service through email at SERVICE@ZHIYUN-TECH.COM or website at WWW.ZHIYUNTECH.COM.
2. Your local agent or ZHIYUN's customer service will guide you through the whole service procedure regarding any product issue or problem you have encountered. ZHIYUN reserves the right to reexamine damaged or returned products.

#### Warranty Card

Product model: COV-02

##### Customer Information

Customer Name :

Contact No :

Address :

##### Sales Information

Sales Date :

Prod. Serial No :

Dealer :

Contact No :

##### #1 Maintenance Record

Service Date :

Signature of Repairman :

Cause of Problem :

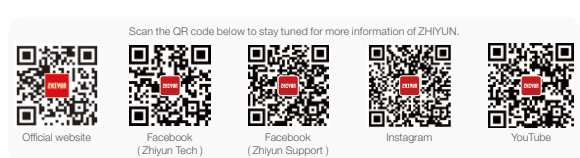
Service Result :

☐ Solved

☐ Unsolved

☐ Refunded (Replaced)

#### Contact Card



Tel: +86 (0) 773-3551275  
USA Hotline: +1 800-318-8137 9:00-18:00 GMT-7 Mon-Fri  
Europe Hotline: +49 (0) 151 9132 190, 10:00-17:00 GMT+1, Mon-Fri  
Email: service@zhiyun-tech.com  
Website: www.zhiyun-tech.com  
Address: 6th Floor, Building 13, Creative Industrial Park, Guimo Road, Qingxiang District, Guilin, 541004, Guangxi, China  
Please download the latest version from www.zhiyun-tech.com  
This document is subject to change without notice.  
ZHIYUN™, TransMount™ are the trademarks of Gulin ZhiShen Information Technology Co., Ltd. (hereinafter referred to as "ZHIYUN" or "ZHIYUN TECH") and its affiliates. All product names or trademarks referred to herein are trademarks or registered trademarks of their respective holders.  
Copyright © 2019 ZHISHEN. All rights reserved.

Zhiyun-tech.com 8

FCC statements:

This device complies with part 15 of the FCC rules. Operation is subject to the following two conditions: (1) this device may not cause harmful interference, and (2) this device must accept any interference received, including interference that may cause undesired operation.

NOTE: The manufacturer is not responsible for any radio or TV interference caused by unauthorized modifications or changes to this equipment. Such modifications or changes could void the user's authority to operate the equipment.

NOTE: This equipment has been tested and found to comply with the limits for a Class B digital device, pursuant to part 15 of the FCC Rules. These limits are designed to provide reasonable protection against harmful interference in a residential installation. This equipment generates uses and can radiate radio frequency energy and, if not installed and used in accordance with the instructions, may cause harmful interference to radio communications. However, there is no guarantee that interference will not occur in a particular installation. If this equipment does cause harmful interference to radio or television reception, which can be determined by turning the equipment off and on, the user is encouraged to try to correct the interference by one or more of the following measures:

- Reorient or relocate the receiving antenna.
- Increase the separation between the equipment and receiver.
- Connect the equipment into an outlet on a circuit different from that to which the receiver is connected.
- Consult the dealer or an experienced radio/TV technician for help.

## RF

The SAR limit of USA (FCC) is 1.6 W/kg averaged over one gram of tissue. Device types COV-02(FCC ID: 2AIHFZYCOV02) has also been tested against this SAR limit. The highest SAR value reported under this standard during product certification for use when properly worn on the body is 1.169 W/kg.

. This device was tested for typical body-worn operations with the back of the handset kept 5mm from the body.

To maintain compliance with FCC RF exposure requirements, use accessories that maintain a 5mm separation distance between the user's body and the back of the handset. The use of belt clips, holsters and similar accessories should not contain metallic components in its assembly. The use of accessories that do not satisfy these requirements may not comply with FCC RF exposure requirements, and should be avoided.