

Plot No.1

Measurement performed on October 19, 2024 at 18:52

Device Under Test

Manufacturer	Model	Dimensions[mm]	Speaker Position [mm]
		162.0 x 78.0 x 8.0	161.9

Hardware Setup

Probe Name	Probe Calibration Date	DAE Name	DAE Calibration Date
EF3DV3 - SN4050	March 06, 2024	DAE4 Sn1691	April 19, 2024

Communication Systems

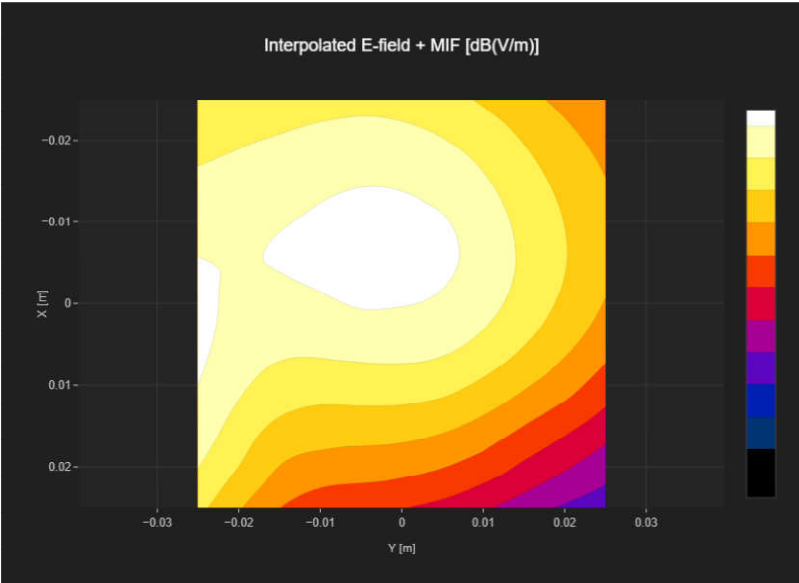
Band Name	Communication Systems Name	Channel	Frequency [MHz]
Band 41	LTE-TDD (SC-FDMA, 1 RB, 20 MHz, 16-QAM)	39750	2506.0

Grid Settings

Extent X [mm]	Extent Y [mm]	Step X [mm]	Step Y [mm]	Distance [mm]
50.0	50.0	10.0	10.0	15.0

Results

E _{max} [dB(V/m)]	E _{avg50x50 max} [dB(V/m)]	MIF [dB]	RFail [dB(V/m)]
31.04	27.85	-1.44	26.41



Plot No.2

Measurement performed on October 19, 2024 at 19:13

Device Under Test

Manufacturer	Model	Dimensions[mm]	Speaker Position [mm]
		162.0 x 78.0 x 8.0	161.9

Hardware Setup

Probe Name	Probe Calibration Date	DAE Name	DAE Calibration Date
EF3DV3 - SN4050	March 06, 2024	DAE4 Sn1691	April 19, 2024

Communication Systems

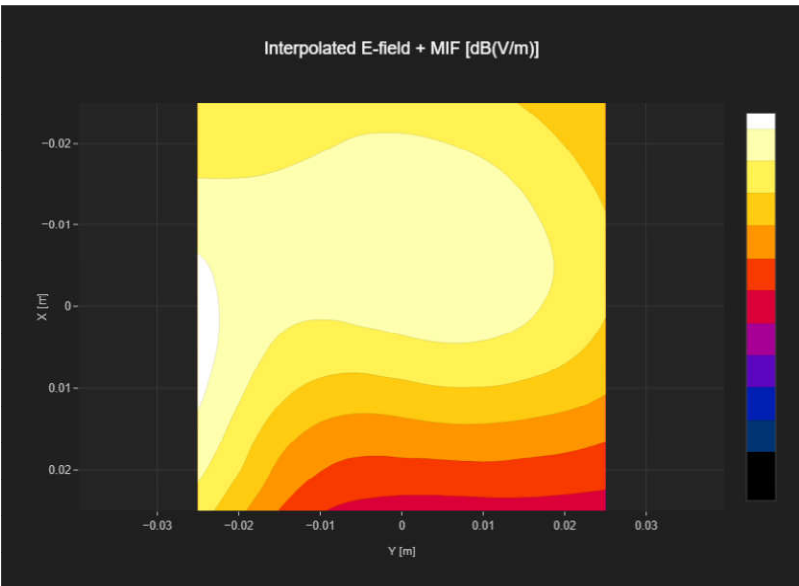
Band Name	Communication Systems Name	Channel	Frequency [MHz]
Band 41	LTE-TDD (SC-FDMA, 1 RB, 20 MHz, 16-QAM)	40185	2549.5

Grid Settings

Extent X [mm]	Extent Y [mm]	Step X [mm]	Step Y [mm]	Distance [mm]
50.0	50.0	10.0	10.0	15.0

Results

Emax [dB(V/m)]	Eavg50x50 max [dB(V/m)]	MIF [dB]	RFail [dB(V/m)]
29.87	27.37	-1.44	25.93



Plot No.3

Measurement performed on October 19, 2024 at 19:17

Device Under Test

Manufacturer	Model	Dimensions[mm]	Speaker Position [mm]
		162.0 x 78.0 x 8.0	161.9

Hardware Setup

Probe Name	Probe Calibration Date	DAE Name	DAE Calibration Date
EF3DV3 - SN4050	March 06, 2024	DAE4 Sn1691	April 19, 2024

Communication Systems

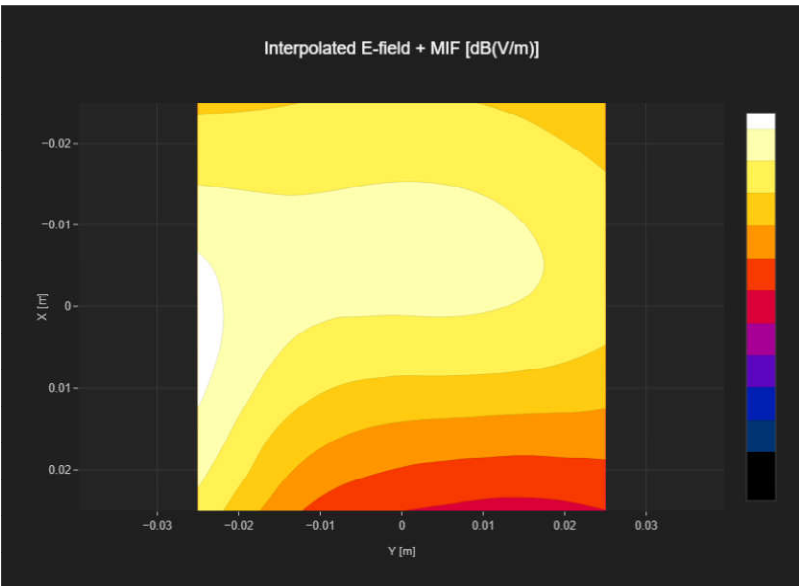
Band Name	Communication Systems Name	Channel	Frequency [MHz]
Band 41	LTE-TDD (SC-FDMA, 1 RB, 20 MHz, 16-QAM)	40620	2593.0

Grid Settings

Extent X [mm]	Extent Y [mm]	Step X [mm]	Step Y [mm]	Distance [mm]
50.0	50.0	10.0	10.0	15.0

Results

E _{max} [dB(V/m)]	E _{avg50x50 max} [dB(V/m)]	MIF [dB]	RFail [dB(V/m)]
28.44	26.67	-1.44	25.23



Plot No.4

Measurement performed on October 19, 2024 at 19:20

Device Under Test

Manufacturer	Model	Dimensions[mm]	Speaker Position [mm]
		162.0 x 78.0 x 8.0	161.9

Hardware Setup

Probe Name	Probe Calibration Date	DAE Name	DAE Calibration Date
EF3DV3 - SN4050	March 06, 2024	DAE4 Sn1691	April 19, 2024

Communication Systems

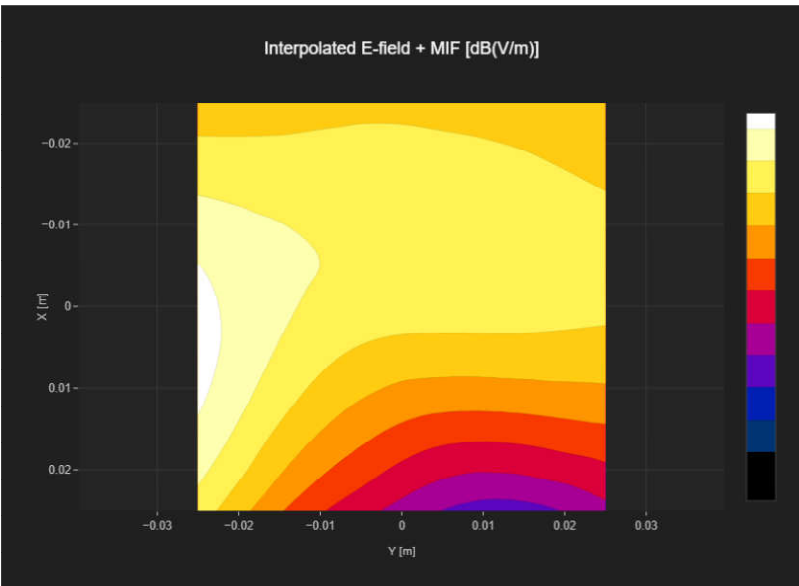
Band Name	Communication Systems Name	Channel	Frequency [MHz]
Band 41	LTE-TDD (SC-FDMA, 1 RB, 20 MHz, 16-QAM)	41055	2636.5

Grid Settings

Extent X [mm]	Extent Y [mm]	Step X [mm]	Step Y [mm]	Distance [mm]
50.0	50.0	10.0	10.0	15.0

Results

E _{max} [dB(V/m)]	E _{avg50x50} max [dB(V/m)]	MIF [dB]	RFail [dB(V/m)]
29.32	25.01	-1.44	23.57



Plot No.5

Measurement performed on October 19, 2024 at 19:23

Device Under Test

Manufacturer	Model	Dimensions[mm]	Speaker Position [mm]
		162.0 x 78.0 x 8.0	161.9

Hardware Setup

Probe Name	Probe Calibration Date	DAE Name	DAE Calibration Date
EF3DV3 - SN4050	March 06, 2024	DAE4 Sn1691	April 19, 2024

Communication Systems

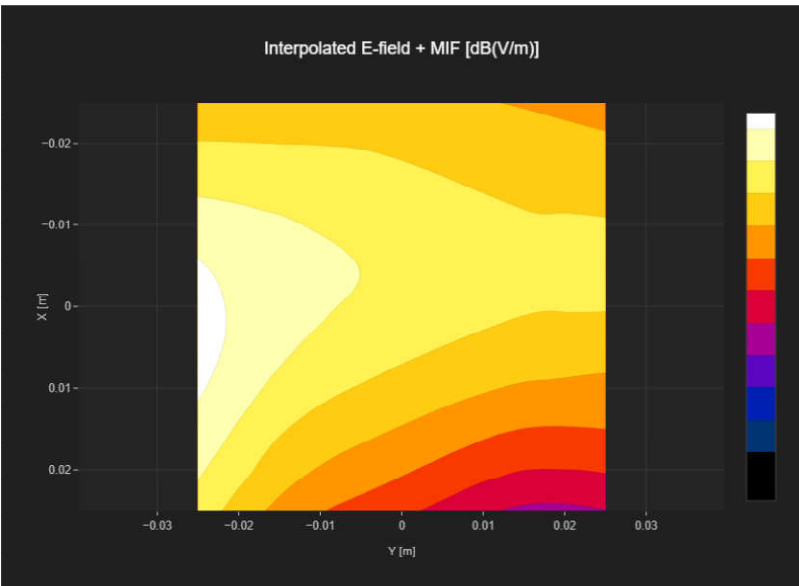
Band Name	Communication Systems Name	Channel	Frequency [MHz]
Band 41	LTE-TDD (SC-FDMA, 1 RB, 20 MHz, 16-QAM)	41490	2680.0

Grid Settings

Extent X [mm]	Extent Y [mm]	Step X [mm]	Step Y [mm]	Distance [mm]
50.0	50.0	10.0	10.0	15.0

Results

E _{max} [dB(V/m)]	E _{avg50x50} max [dB(V/m)]	MIF [dB]	RFail [dB(V/m)]
29.42	25.21	-1.44	23.77



Plot No.6

Measurement performed on October 19, 2024 at 19:44

Device Under Test

Manufacturer	Model	Dimensions[mm]	Speaker Position [mm]
		162.0 x 78.0 x 8.0	161.9

Hardware Setup

Probe Name	Probe Calibration Date	DAE Name	DAE Calibration Date
EF3DV3 - SN4050	March 06, 2024	DAE4 Sn1691	April 19, 2024

Communication Systems

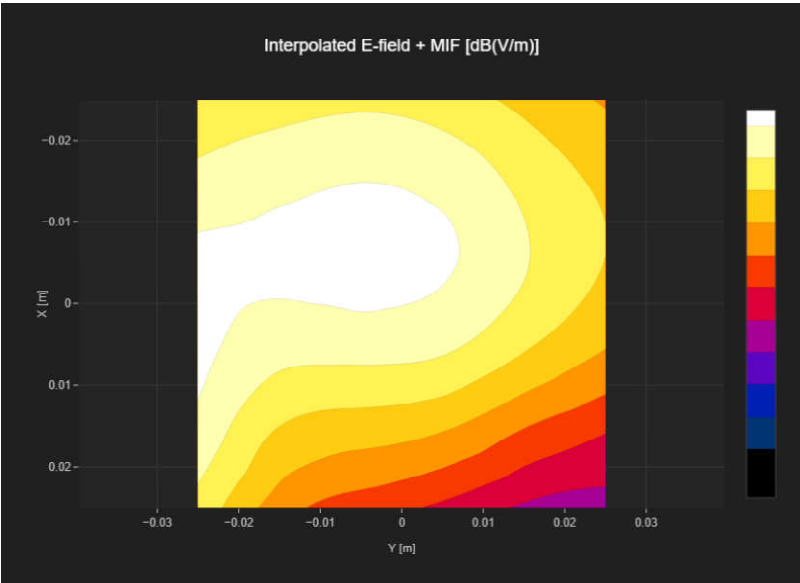
Band Name	Communication Systems Name	Channel	Frequency [MHz]
Band n41	5G NR (DFT-s-OFDM, 1 RB, 100 MHz, QPSK, 30 kHz)	509202	2546.01

Grid Settings

Extent X [mm]	Extent Y [mm]	Step X [mm]	Step Y [mm]	Distance [mm]
50.0	50.0	10.0	10.0	15.0

Results

E _{max} [dB(V/m)]	E _{avg50x50 max} [dB(V/m)]	MIF [dB]	RFail [dB(V/m)]
30.36	27.44	-1.64	25.8



Plot No.7

Measurement performed on October 19, 2024 at 19:48

Device Under Test

Manufacturer	Model	Dimensions[mm]	Speaker Position [mm]
		162.0 x 78.0 x 8.0	161.9

Hardware Setup

Probe Name	Probe Calibration Date	DAE Name	DAE Calibration Date
EF3DV3 - SN4050	March 06, 2024	DAE4 Sn1691	April 19, 2024

Communication Systems

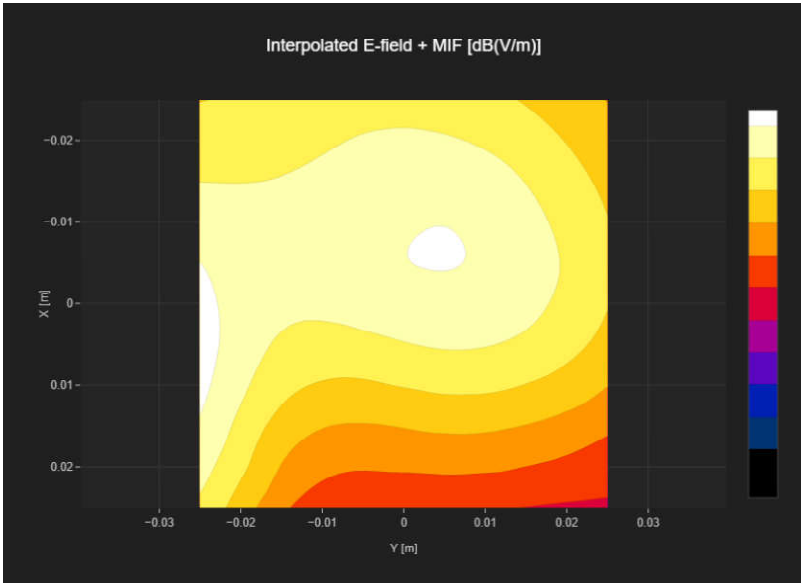
Band Name	Communication Systems Name	Channel	Frequency [MHz]
Band n41	5G NR (DFT-s-OFDM, 1 RB, 100 MHz, QPSK, 30 kHz)	518598	2592.99

Grid Settings

Extent X [mm]	Extent Y [mm]	Step X [mm]	Step Y [mm]	Distance [mm]
50.0	50.0	10.0	10.0	15.0

Results

E _{max} [dB(V/m)]	E _{avg50x50 max} [dB(V/m)]	MIF [dB]	RFail [dB(V/m)]
30.01	27.44	-1.64	25.8



Plot No.8

Measurement performed on October 19, 2024 at 19:53

Device Under Test

Manufacturer	Model	Dimensions[mm]	Speaker Position [mm]
		162.0 x 78.0 x 8.0	161.9

Hardware Setup

Probe Name	Probe Calibration Date	DAE Name	DAE Calibration Date
EF3DV3 - SN4050	March 06, 2024	DAE4 Sn1691	April 19, 2024

Communication Systems

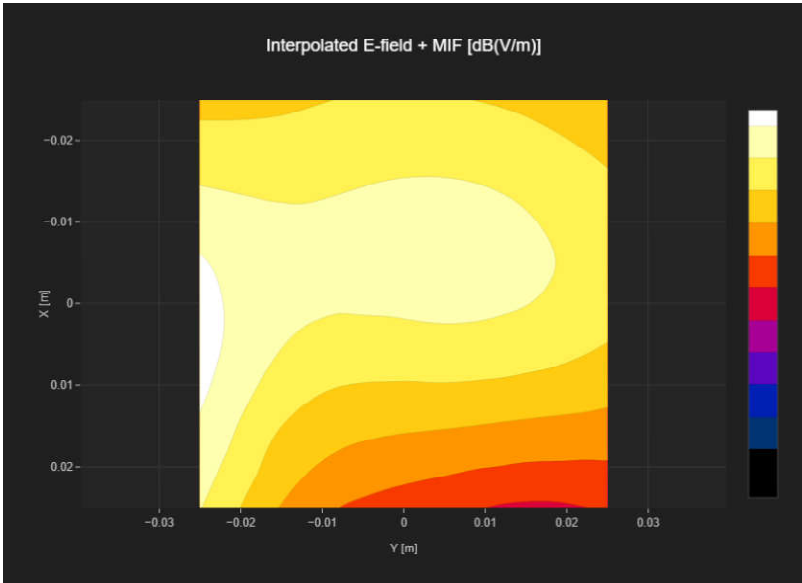
Band Name	Communication Systems Name	Channel	Frequency [MHz]
Band n41	5G NR (DFT-s-OFDM, 1 RB, 100 MHz, QPSK, 30 kHz)	528000	2640.0

Grid Settings

Extent X [mm]	Extent Y [mm]	Step X [mm]	Step Y [mm]	Distance [mm]
50.0	50.0	10.0	10.0	15.0

Results

E _{max} [dB(V/m)]	E _{avg50x50 max} [dB(V/m)]	MIF [dB]	RFail [dB(V/m)]
28.26	26.44	-1.64	24.8



Plot No.9

Measurement performed on October 19, 2024 at 19:58

Device Under Test

Manufacturer	Model	Dimensions[mm]	Speaker Position [mm]
		162.0 x 78.0 x 8.0	161.9

Hardware Setup

Probe Name	Probe Calibration Date	DAE Name	DAE Calibration Date
EF3DV3 - SN4050	March 06, 2024	DAE4 Sn1691	April 19, 2024

Communication Systems

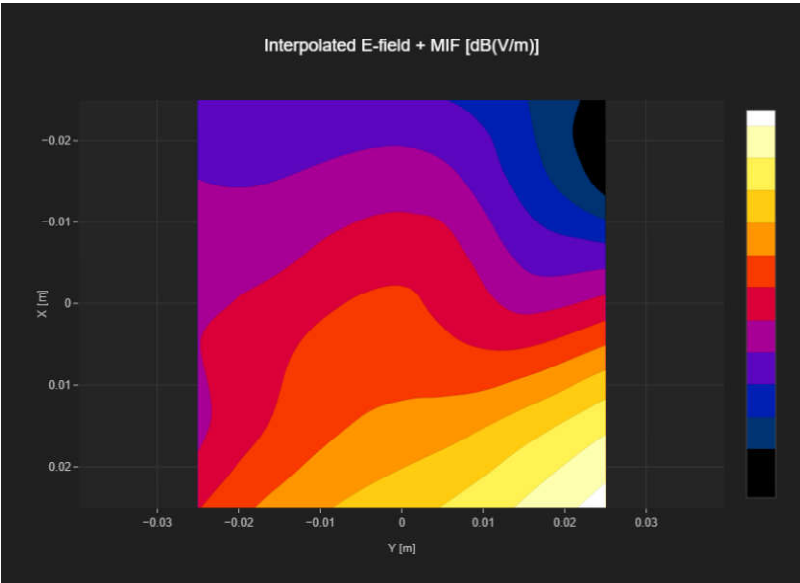
Band Name	Communication Systems Name	Channel	Frequency [MHz]
Band n77	5G NR (DFT-s-OFDM, 1 RB, 100 MHz, QPSK, 30 kHz)	650000	3750.0

Grid Settings

Extent X [mm]	Extent Y [mm]	Step X [mm]	Step Y [mm]	Distance [mm]
50.0	50.0	10.0	10.0	15.0

Results

E _{max} [dB(V/m)]	E _{avg50x50 max} [dB(V/m)]	MIF [dB]	RFail [dB(V/m)]
35.04	25.54	-1.64	23.9



Plot No.10

Measurement performed on October 19, 2024 at 20:05

Device Under Test

Manufacturer	Model	Dimensions[mm]	Speaker Position [mm]
		162.0 x 78.0 x 8.0	161.9

Hardware Setup

Probe Name	Probe Calibration Date	DAE Name	DAE Calibration Date
EF3DV3 - SN4050	March 06, 2024	DAE4 Sn1691	April 19, 2024

Communication Systems

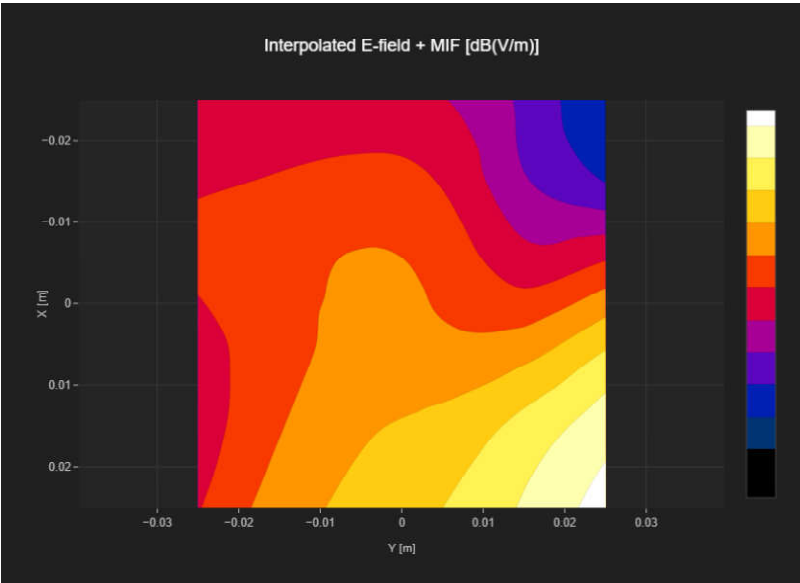
Band Name	Communication Systems Name	Channel	Frequency [MHz]
Band n77	5G NR (DFT-s-OFDM, 1 RB, 100 MHz, QPSK, 30 kHz)	656000	3840.0

Grid Settings

Extent X [mm]	Extent Y [mm]	Step X [mm]	Step Y [mm]	Distance [mm]
50.0	50.0	10.0	10.0	15.0

Results

Emax [dB(V/m)]	Eavg50x50 max [dB(V/m)]	MIF [dB]	RFail [dB(V/m)]
34.56	26.93	-1.64	25.29



Plot No.11

Measurement performed on October 19, 2024 at 20:10

Device Under Test

Manufacturer	Model	Dimensions[mm]	Speaker Position [mm]
		162.0 x 78.0 x 8.0	161.9

Hardware Setup

Probe Name	Probe Calibration Date	DAE Name	DAE Calibration Date
EF3DV3 - SN4050	March 06, 2024	DAE4 Sn1691	April 19, 2024

Communication Systems

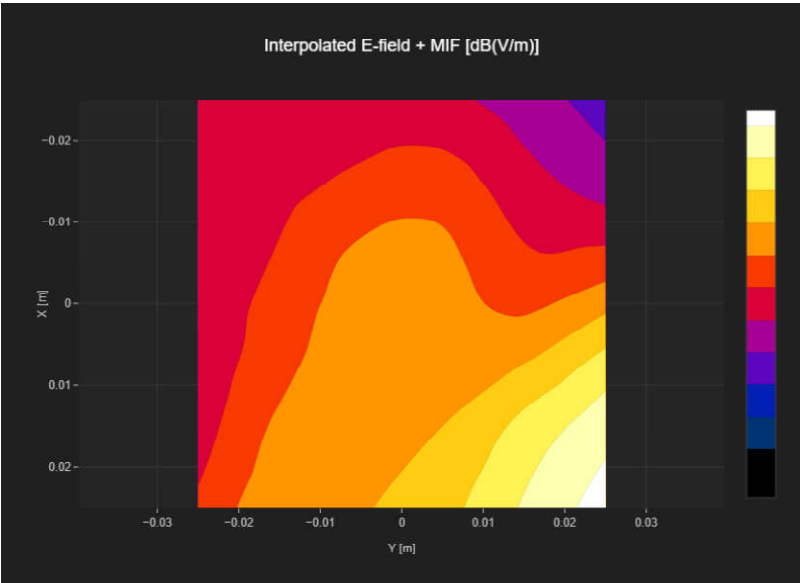
Band Name	Communication Systems Name	Channel	Frequency [MHz]
Band n77	5G NR (DFT-s-OFDM, 1 RB, 100 MHz, QPSK, 30 kHz)	662000	3930.0

Grid Settings

Extent X [mm]	Extent Y [mm]	Step X [mm]	Step Y [mm]	Distance [mm]
50.0	50.0	10.0	10.0	15.0

Results

E _{max} [dB(V/m)]	E _{avg50x50 max} [dB(V/m)]	MIF [dB]	RFail [dB(V/m)]
34.35	26.88	-1.64	25.24



Plot No.12

Measurement performed on October 19, 2024 at 20:16

Device Under Test

Manufacturer	Model	Dimensions[mm]	Speaker Position [mm]
		162.0 x 78.0 x 8.0	161.9

Hardware Setup

Probe Name	Probe Calibration Date	DAE Name	DAE Calibration Date
EF3DV3 - SN4050	March 06, 2024	DAE4 Sn1691	April 19, 2024

Communication Systems

Band Name	Communication Systems Name	Channel	Frequency [MHz]
Band n77	5G NR (DFT-s-OFDM, 1 RB, 100 MHz, QPSK, 30 kHz)	633334	3500.01

Grid Settings

Extent X [mm]	Extent Y [mm]	Step X [mm]	Step Y [mm]	Distance [mm]
50.0	50.0	10.0	10.0	15.0

Results

E _{max} [dB(V/m)]	E _{avg50x50 max} [dB(V/m)]	MIF [dB]	RFail [dB(V/m)]
35.46	27.57	-1.64	25.93

