

Document ID	https://docs.google.com/document/d/14RwHjc7o2zFc0dY6p9OtZY-4vhh14VqlbTNR-OMLkt8/edit
Responsible	Maaïke Taklo
Classification	Confidential

Revision History Table

Named revision	Date	Comment:
01	2019-07-08	First version shared with UL
02	2019-07-26	Split document into CCON and sensor, here CCON
03	2019-09-10	Photos updated for CCON 100590-1.1
04	2019-10-17	Photos in Figure 4 and 6 updated with shields fully removed. Antennas on RFIO board indicated with arrows.
05	2019-10-24	Two photos added as PDFs in addition as attachments in order to see details better

8) Internal Photos

Instructions: "Clear sharp focused views of the internals of the device including close up shots of all PCBs (top and bottom, with and without RF shields). It must be possible to identify individual components on PCBs. The photos must be clear and Photos must be taken vertically straight down not angled. All photos are to be placed in a single PDFed exhibit"

Cloud Connector US

Pictures of part 100600 Connector-Main-CPUPower (US)

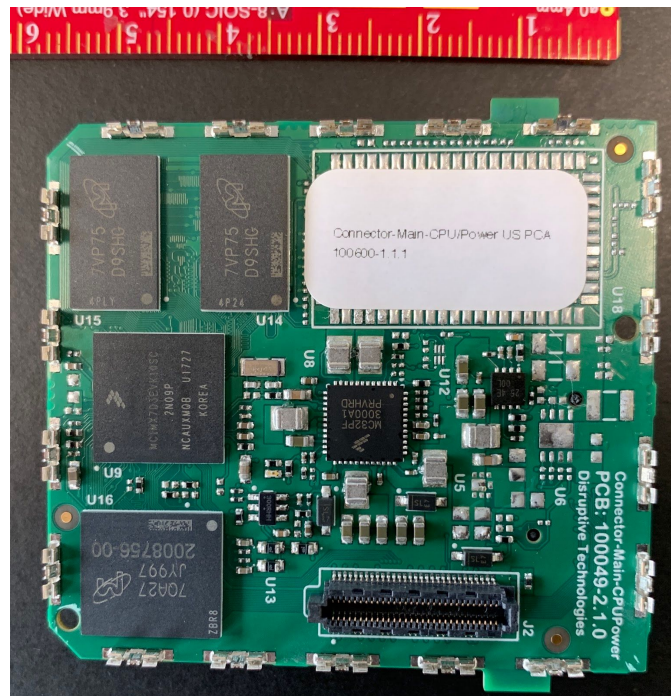


Figure 1: Picture of **top** of part 100600 Connector-Main-CPUPower (US)

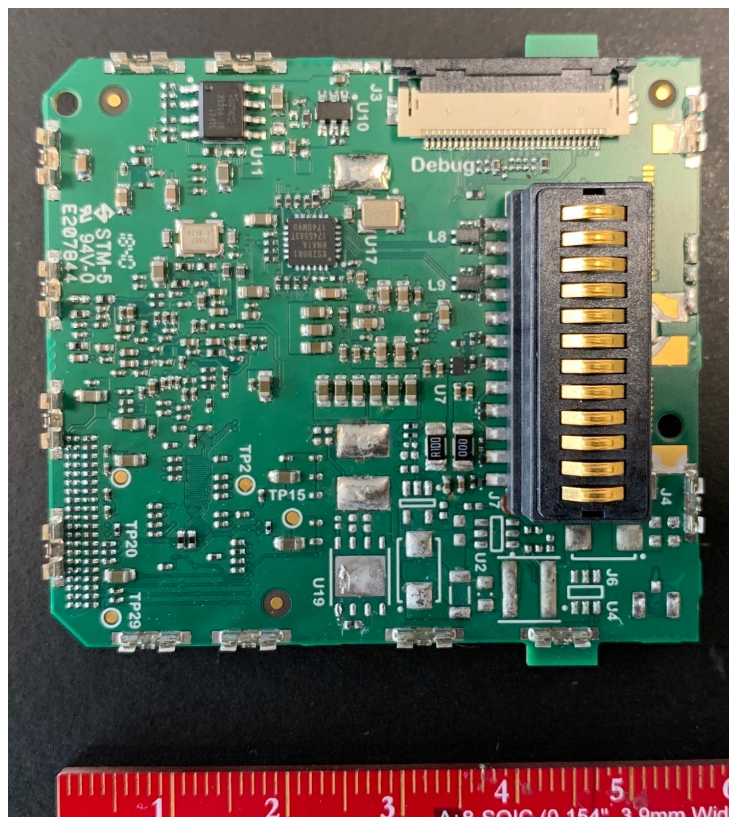


Figure 2: Picture of **bottom** of part 100600 Connector-Main-CPUPower (US)

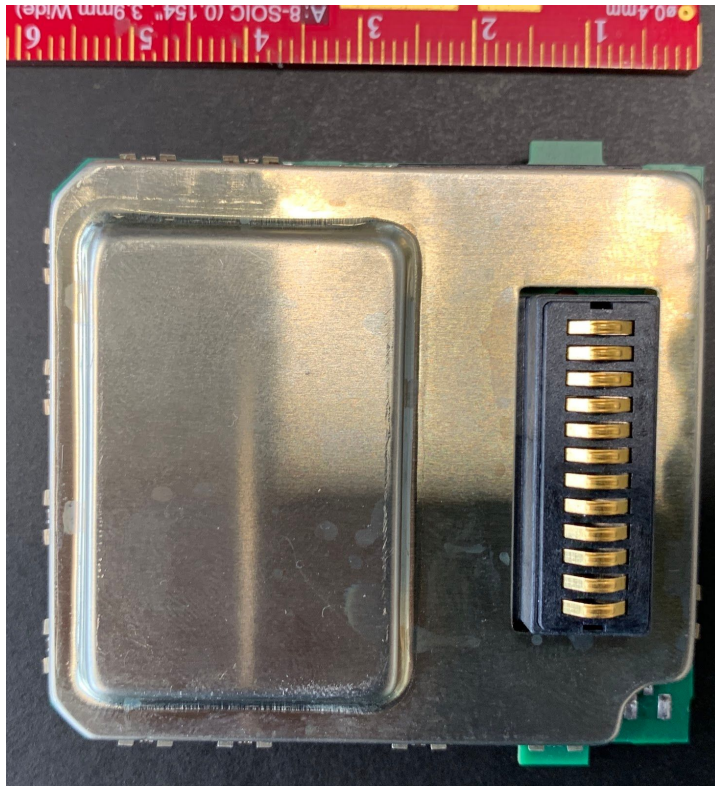


Figure 3: Picture of **bottom** of part 100600 Connector-Main-CPUPower (US), with part 100182 Connector-Main-CPU **shield box** attached

Pictures relevant for part 100602 Connector-Main-RFIO (US)

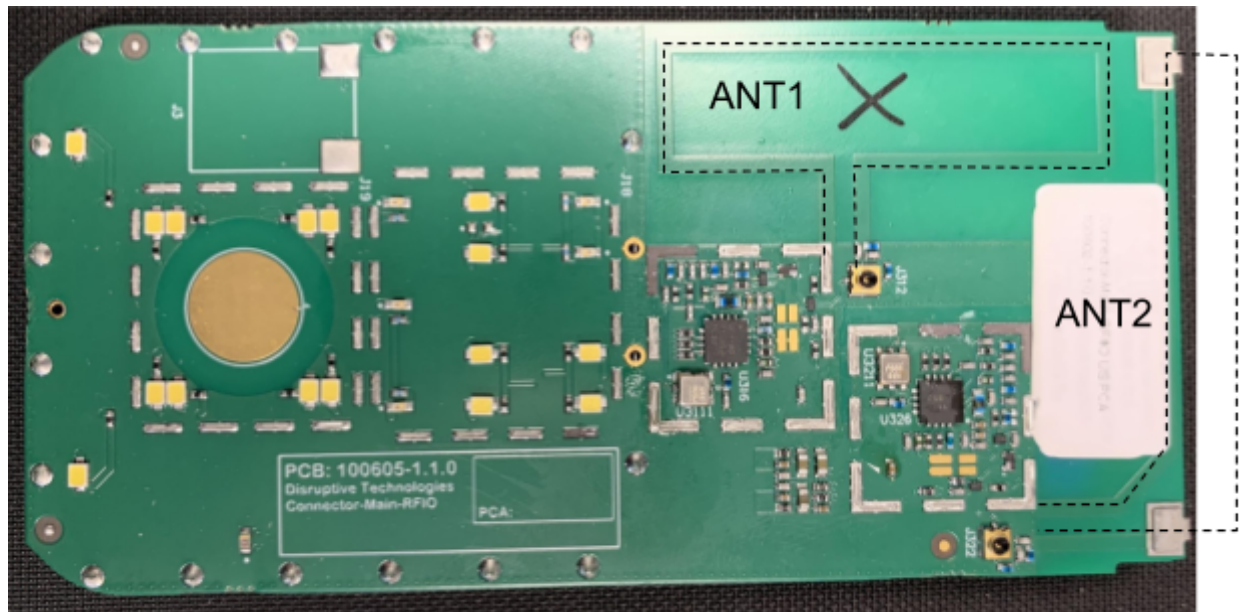
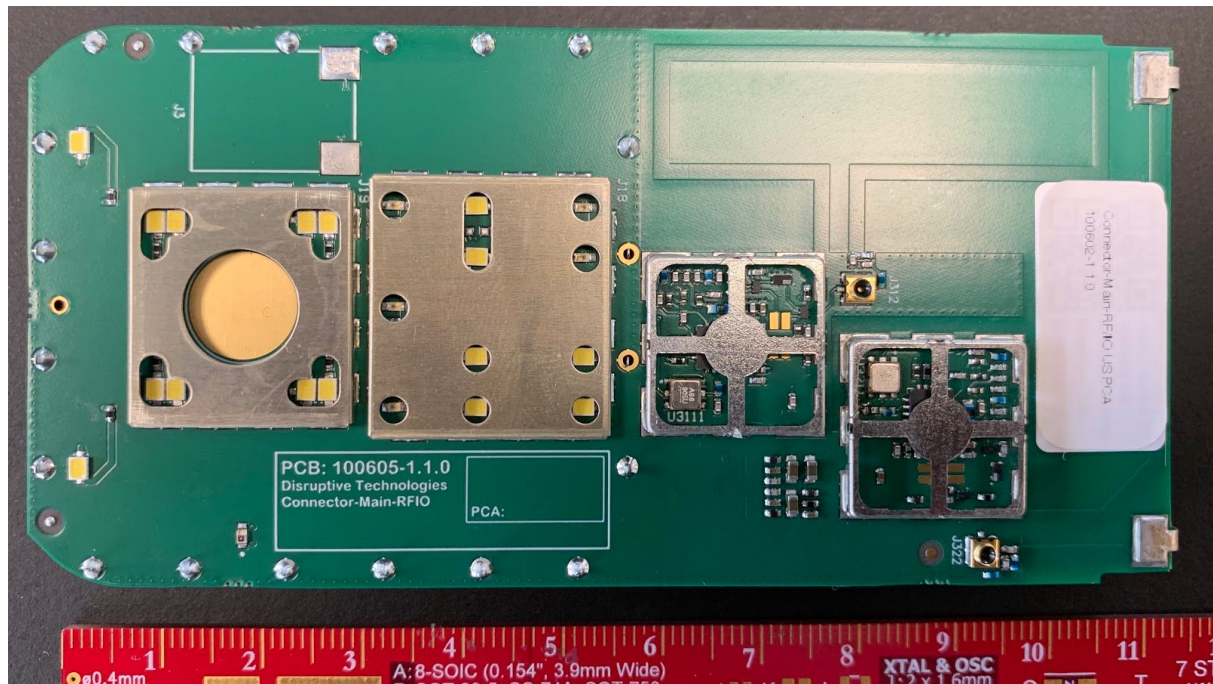


Figure 4: Picture of **top** of part 100602 Connector-Main-RFIO (US). Only the lids are removed from the two shield boxes to the right in the upper picture whereas all shields are removed in the lower picture (see attachment for details). ANT1 and 2 are indicated. ANT2 extends onto the bent part of the board, as indicated in Figure 6.

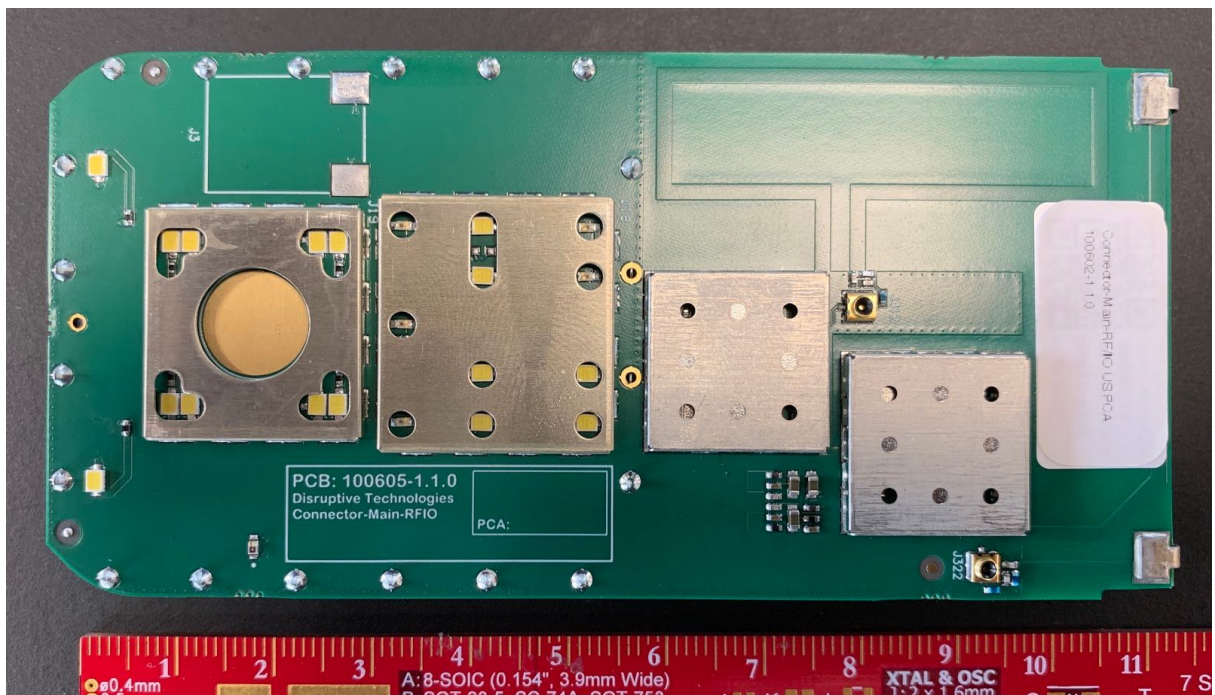


Figure 5: Picture of the **top** of the part 100602 Connector-Main-RFIO (US), with all shields assembled

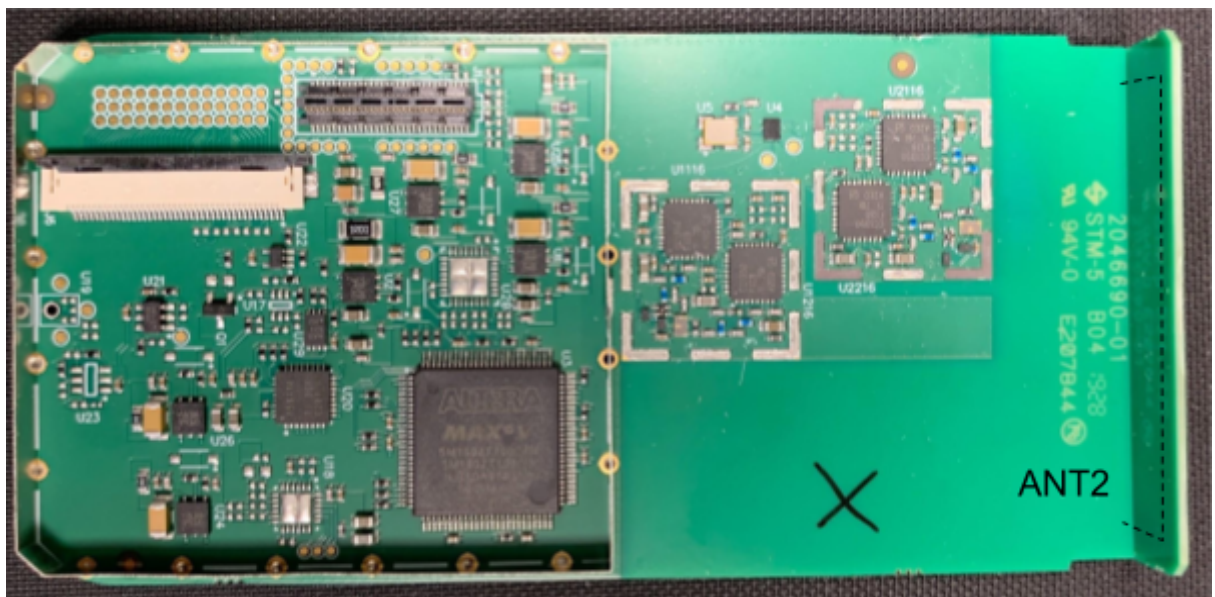
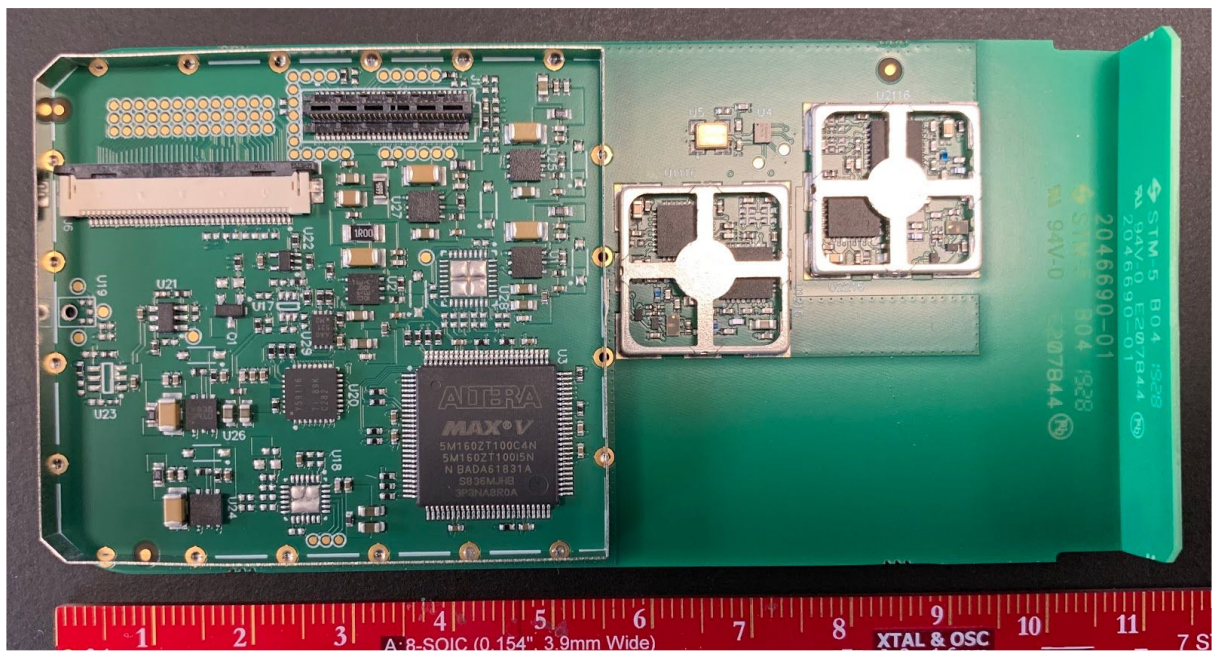


Figure 6: Picture of the **bottom** of the 100602 Connector-Main-RFIO (US). The shields are completely removed in the lower picture (see attachment for details) and the extension of ANT2 onto the bent part of the board is indicated.

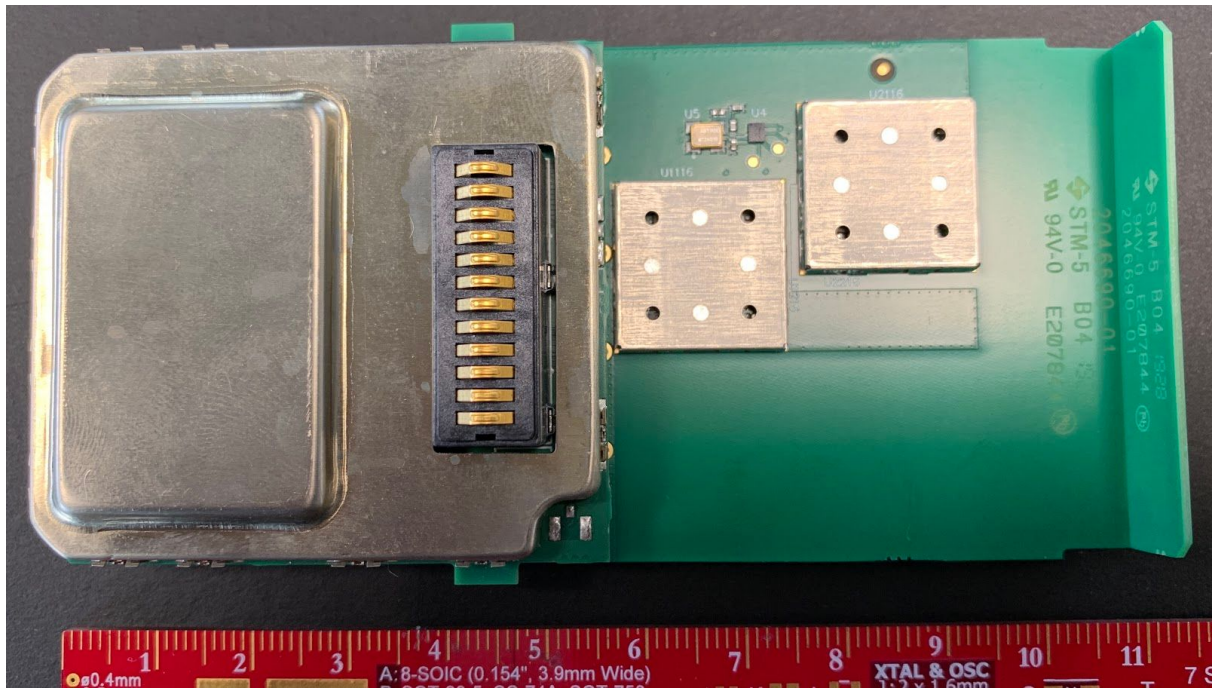


Figure 7: Picture of the **bottom** of the part 100601 Connector-Main-Board assembly US

Pictures of PN100578 Connector-PSU-PoE PCBA



Figure 8: Picture of **top** of PN100578 Connector-PSU-PoE PCBA

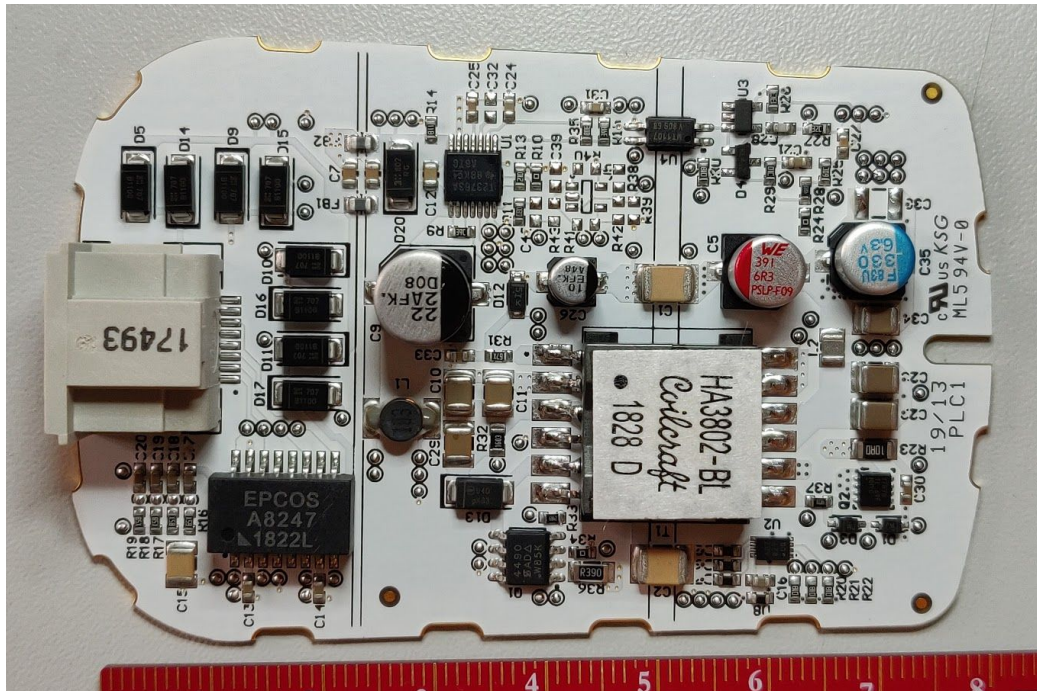


Figure 9: Picture of **bottom** of PN100578 Connector-PSU-PoE PCBA