

EUT - Front View



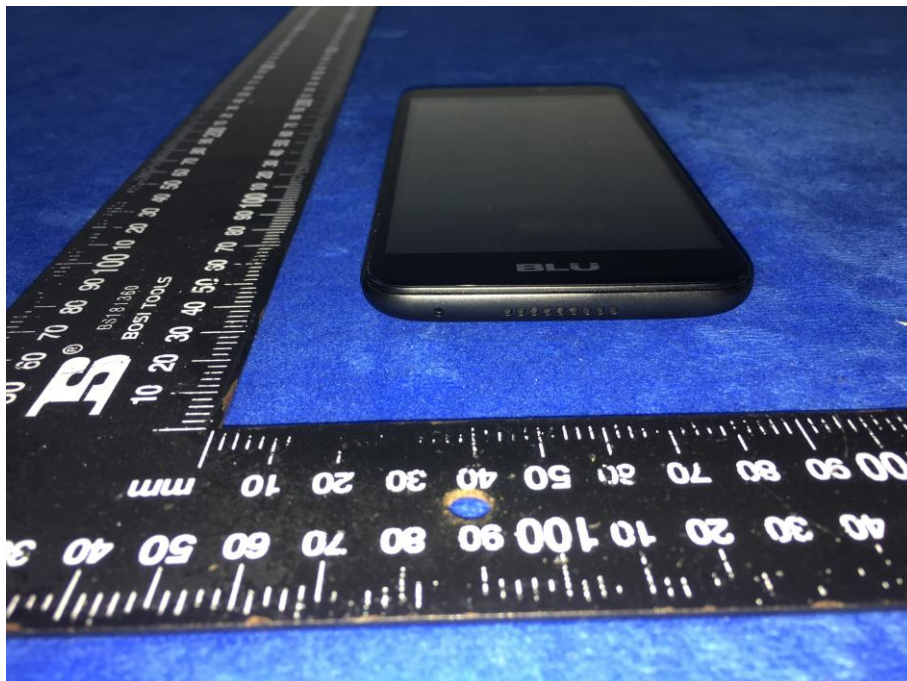
EUT - Rear View



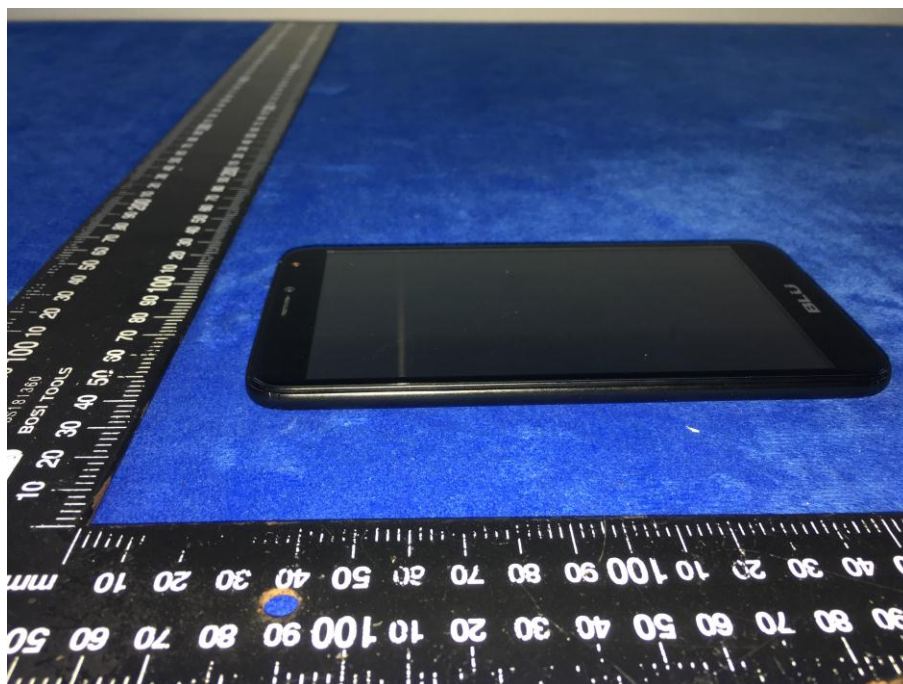
EUT - Top View



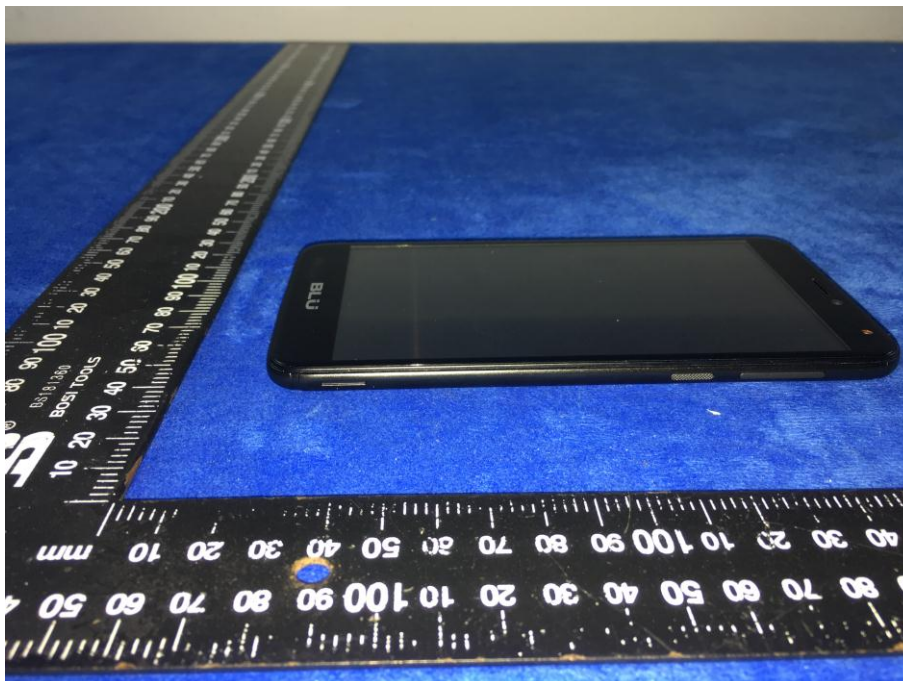
EUT - Bottom View



EUT - Left View



EUT - Right View



Annex B.ii. Photograph: EUT Internal Photo

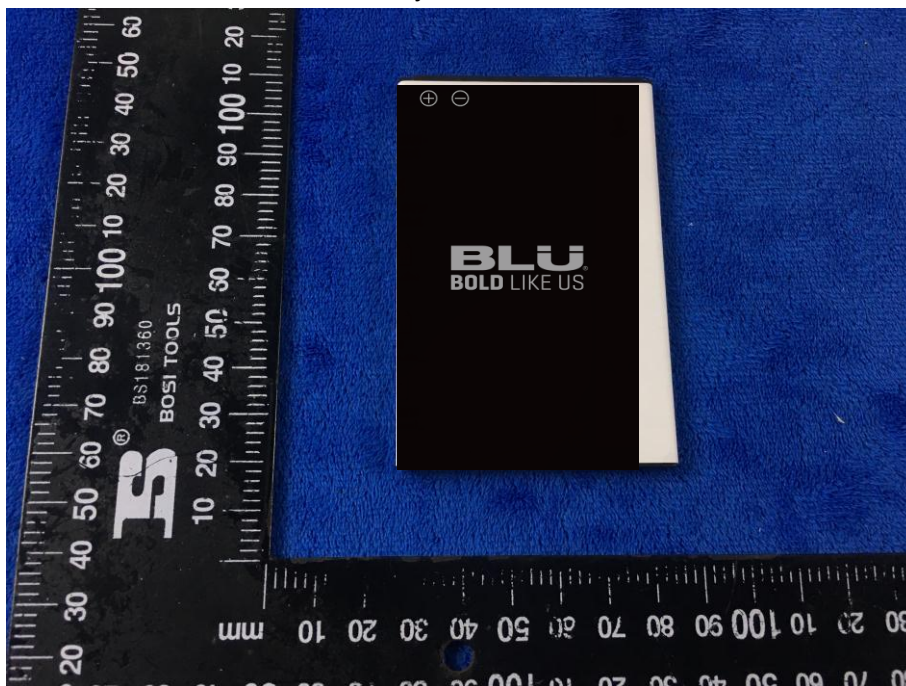
Cover Off - Top View 1



Cover Off - Top View 2



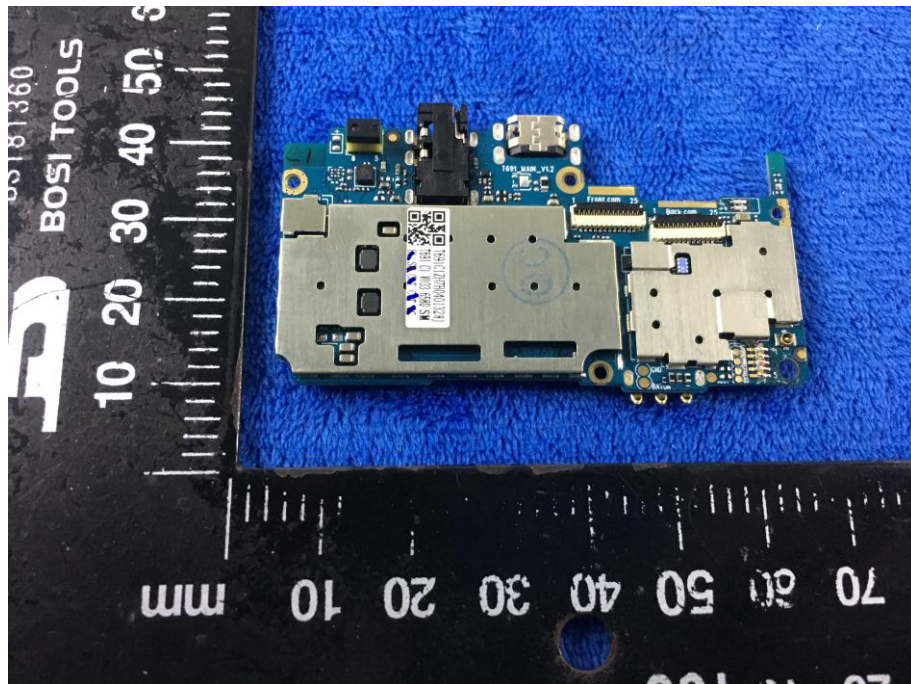
Battery - Front View



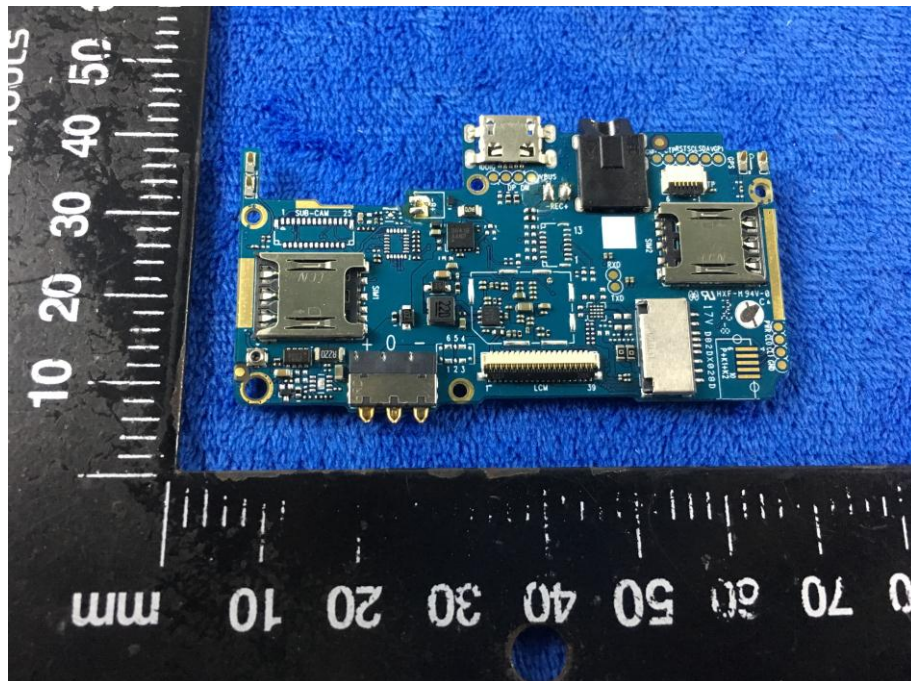
Battery - Rear View



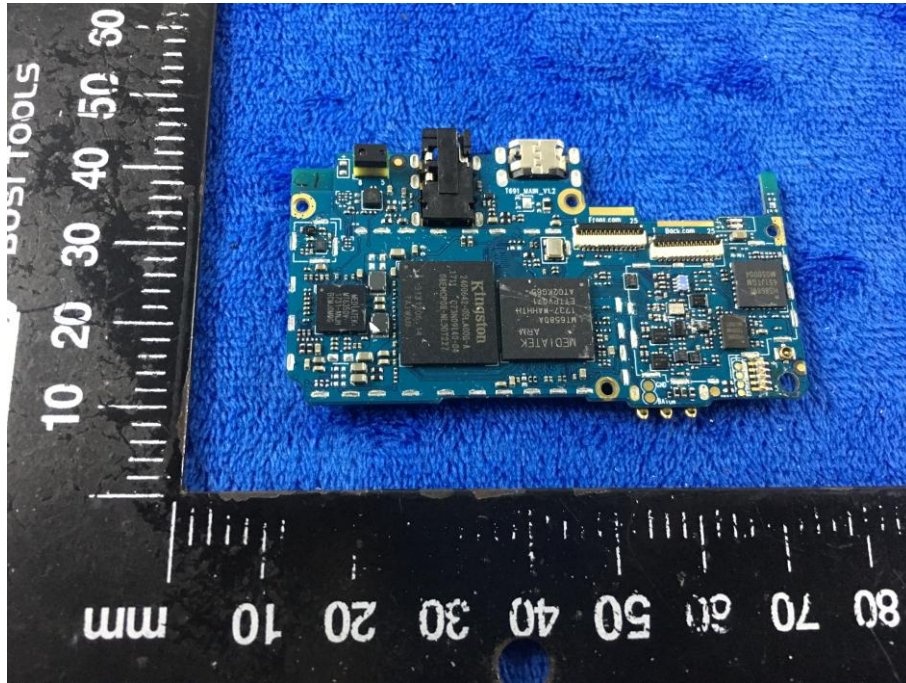
Mainboard with Shielding – Front View



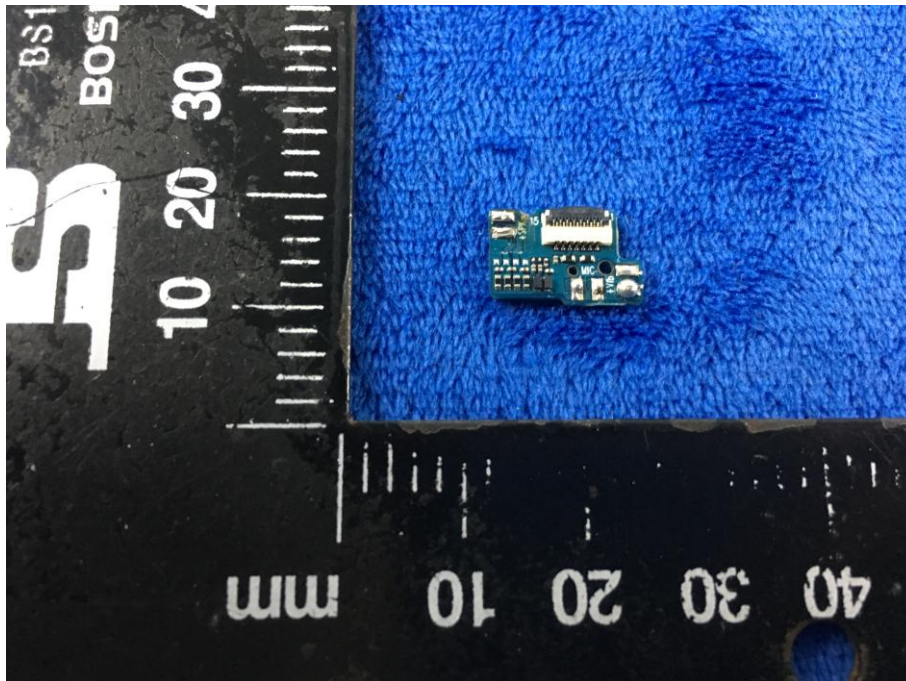
Mainboard with Shielding – Rear View



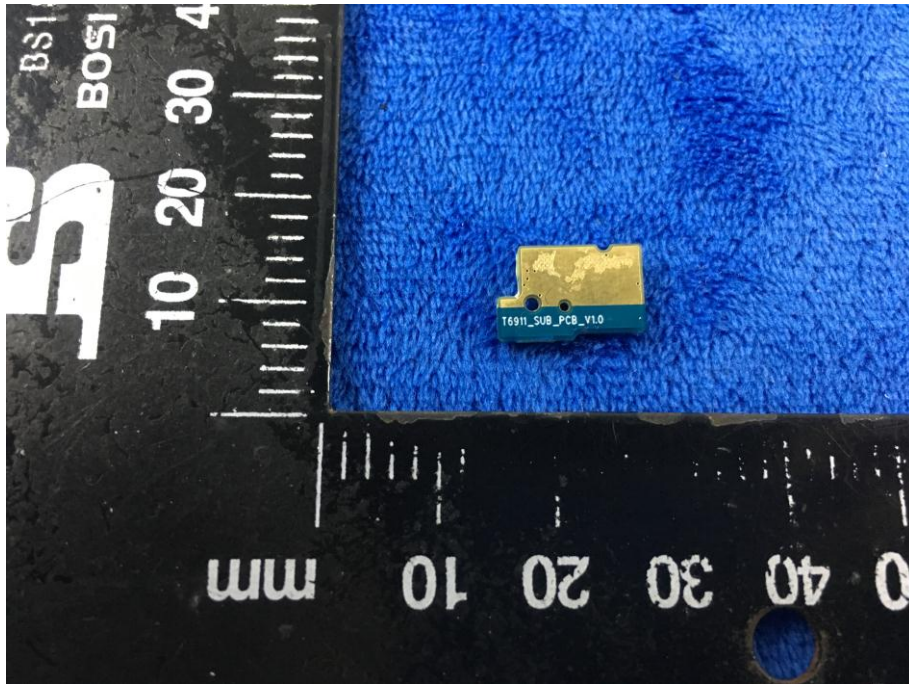
Mainboard without Shielding – Rear View



Small Mainboard – Front View



Small Mainboard – Rear View



LCD – Front View



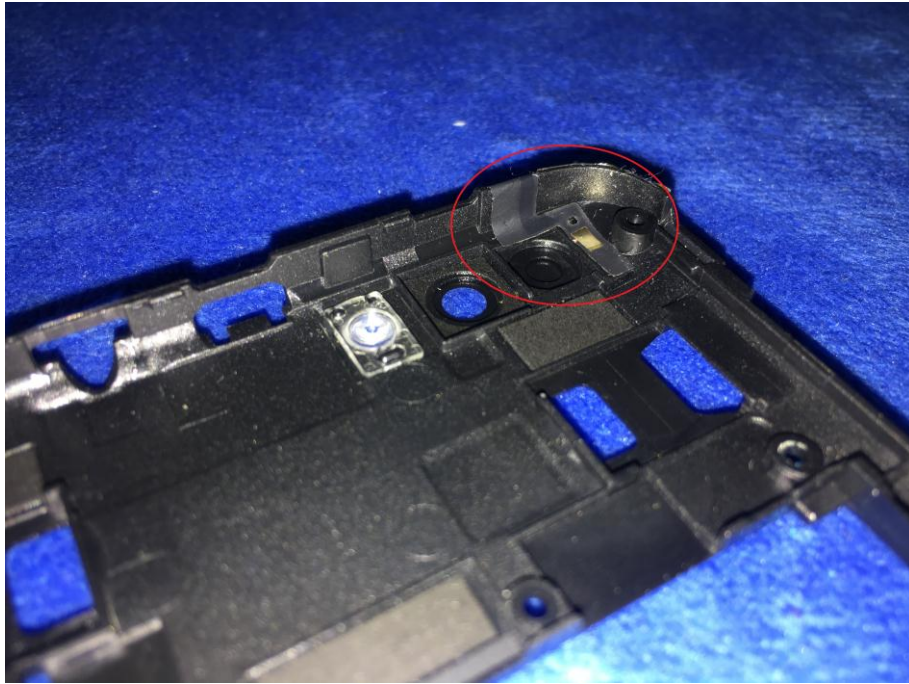
LCD – Rear View



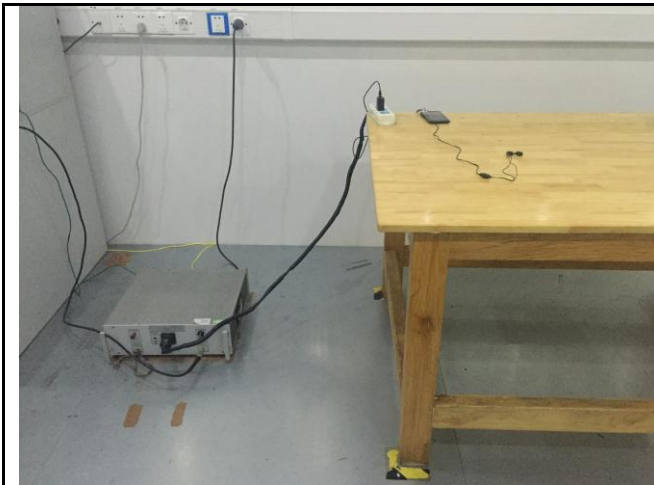
GSM/PCS/UMTS-FDD - Antenna View



WIFI/BT/BLE/GPS - Antenna View



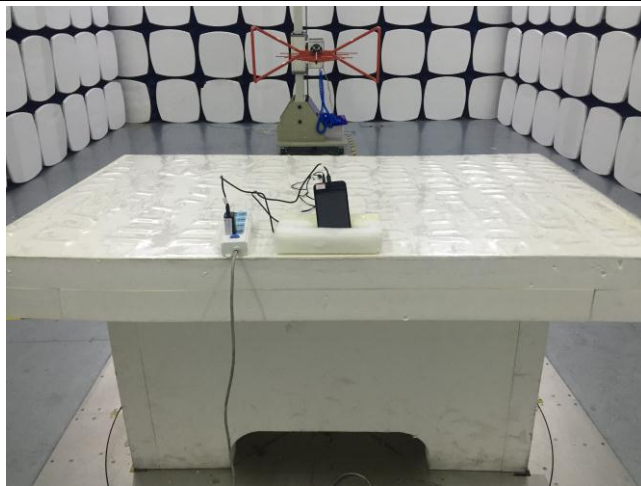
Annex B.iii. Photograph: Test Setup Photo



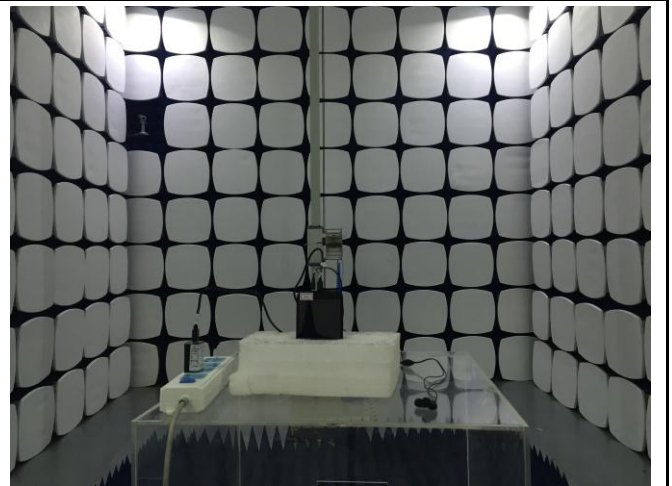
Conducted Emissions Test Setup Front View



Conducted Emissions Test Setup Side View



Radiated Spurious Emissions Test Setup Below 1GHz

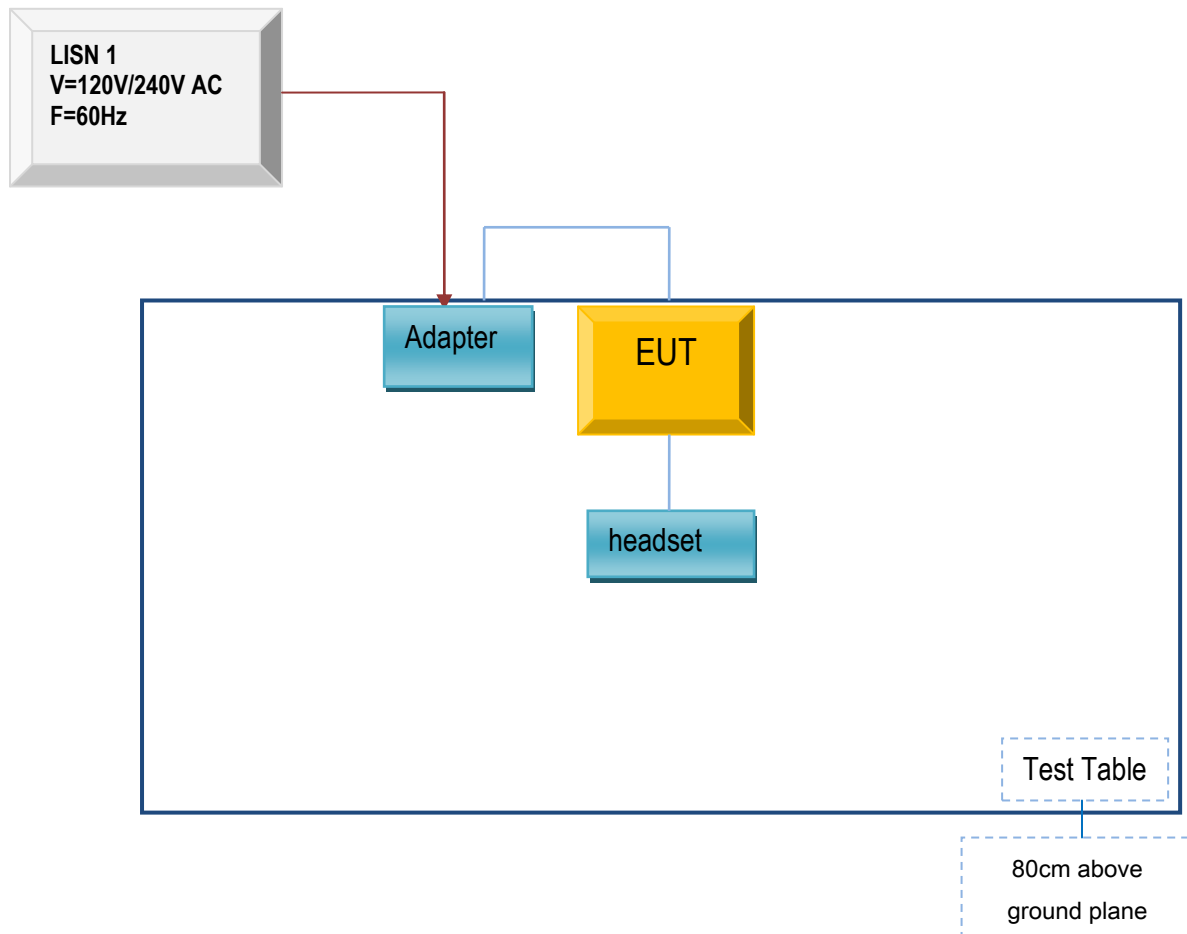


Radiated Spurious Emissions Test Setup Above
1GHz

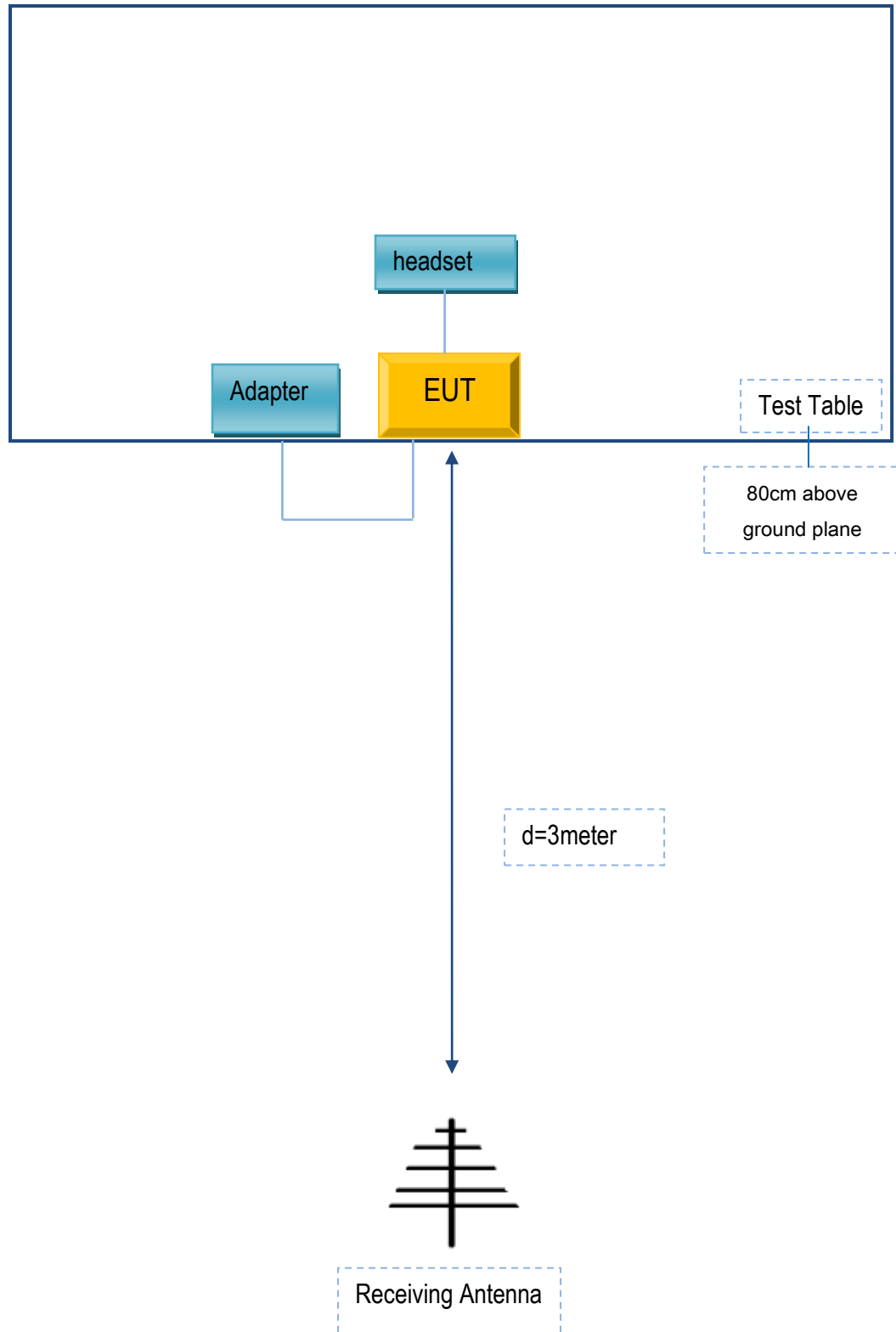
Annex C. TEST SETUP AND SUPPORTING EQUIPMENT

Annex C.ii. TEST SET UP BLOCK

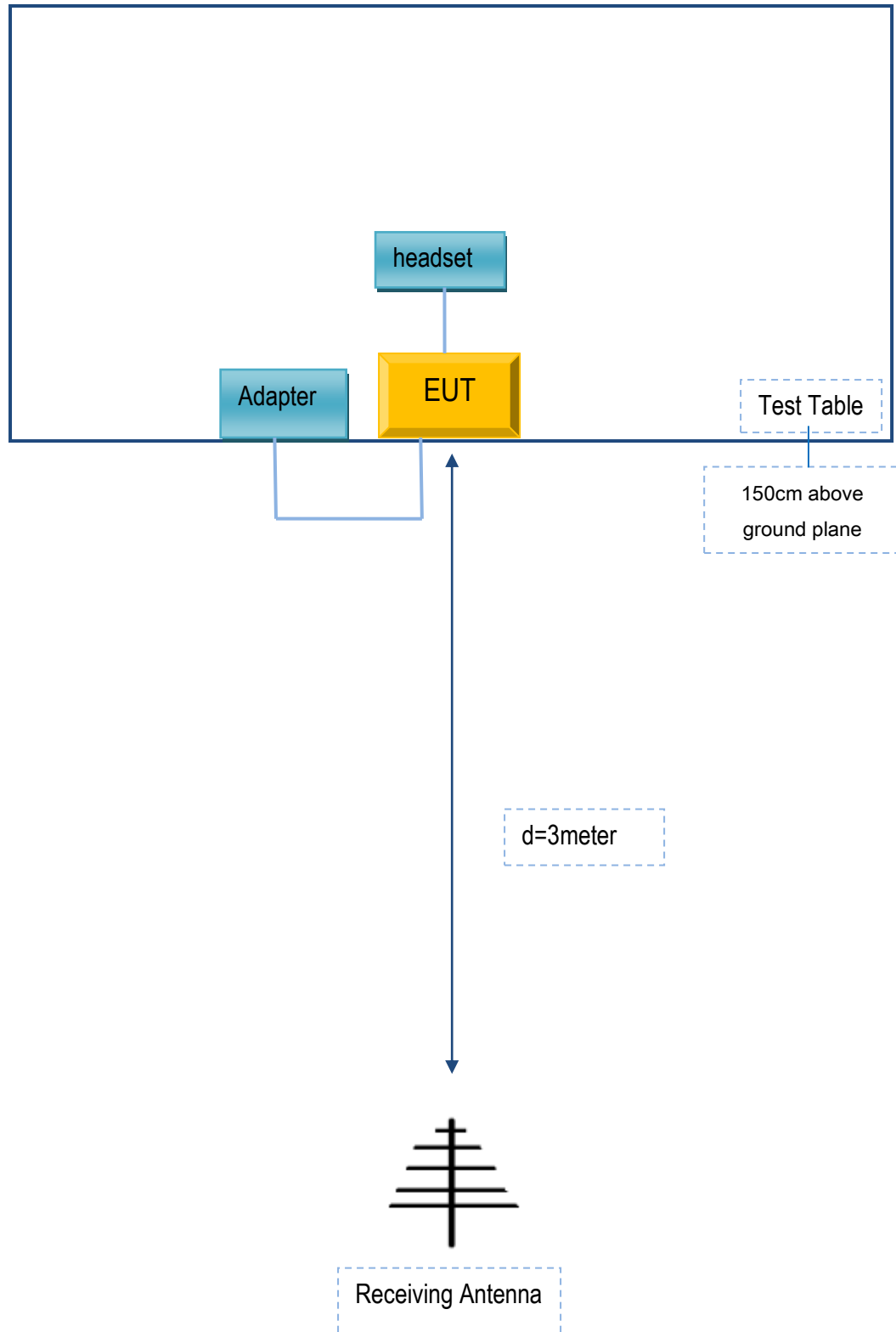
Block Configuration Diagram for AC Line Conducted Emissions



Block Configuration Diagram for Radiated Emissions (Below 1GHz) .



Block Configuration Diagram for Radiated Emissions (Above 1GHz) .



Annex C. ii. SUPPORTING EQUIPMENT DESCRIPTION

The following is a description of supporting equipment and details of cables used with the EUT.

Supporting Equipment:

Manufacturer	Equipment Description	Model	Serial No
BLU Products, Inc.	Adapter	TPA-46050150UU	N/A
BLU Products, Inc.	headset	HORIZON R2	N/A

Supporting Cable:

Cable type	Shield Type	Ferrite Core	Length	Serial No
USB Cable	Un-shielding	No	0.8m	N/A

Test Report	18070843-FCC-R2
Page	66 of 67

Annex D. User Manual / Block Diagram / Schematics / Partlist

Please see the attachment

Annex E. DECLARATION OF SIMILARITY

BLU Products, Inc.

To: SIEMIC, 775 Montague Expressway, Milpitas, CA95035, USA

Declaration Letter

Dear Sir,

For our business issue and marketing requirement, we'd like to shift the main and serial model numbers in the reports, No.17071301, as following:

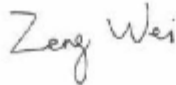
Main Model No.: C6

Serial Model No.: STUDIO J7

And we'd like to use all the former data in the reports of 17071301.

We declare that each of the model's PCB, antenna and appearance shape, accessories are the same. The difference between the two is model name only.

Thank you!



Signature:

Printed name/title: Zeng wei

Address: Address: 10814 NW 33rd St # 100 Doral, FL 33172