

MAGIN GROUP CO., LIMITED

Add: 2/F, No.2 Chuangye 4th Road, Zhangbei, Ailian, Longcheng,
Longgang, SHENZHEN, China

Date: 2025-2-7

FCC ID: 2BML2-MG2404

Dear Sir/Madam,

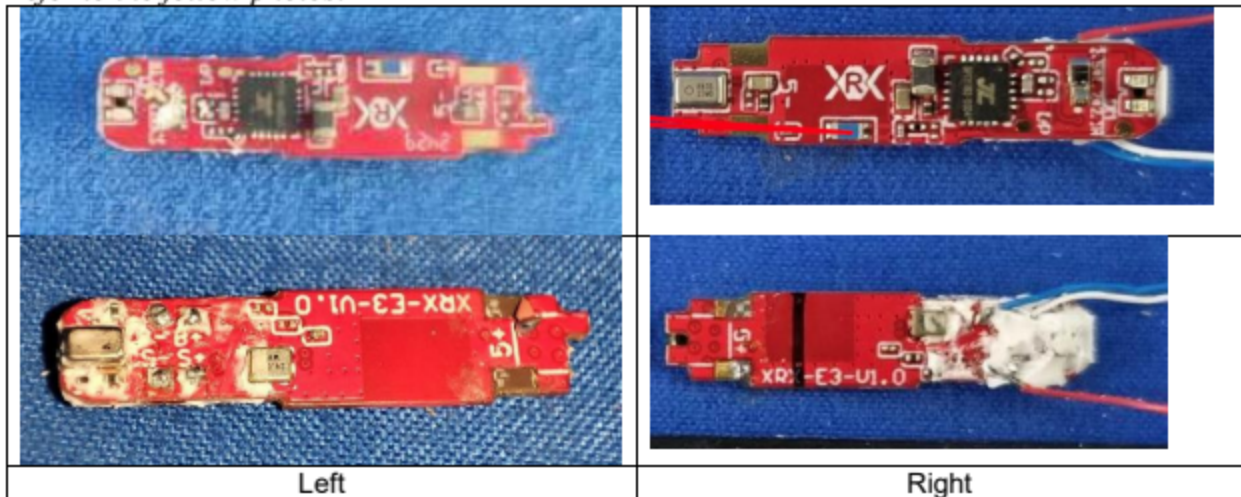
We, **MAGIN GROUP CO., LIMITED** Hereby declares the following statement for Federal Communications Commission, PCB board, circuit, structure and internal of these models are same, Only model number is different for these models:

Product name: Wireless Earphones

Model no.: M2404, M2401, M8, MY09, MY13, Adesso Xstream T3

Additionally, for each model above, the left&right earphones are the same schematic circuits, but the locations of components are different.

Refer to the follow photos:



Sincerely,

Wendy Lin

Name/Title : Wendy Lin/Sales
Company: MAGIN GROUP CO., LIMITED
Address: 2/F, No.2 Chuangye 4th Road, Zhangbei, Ailian, Longcheng,
Longgang, SHENZHEN, China

MAGIN GROUP CO., LIMITED
<i>Add: 2/F, No.2 Chuangye 4th Road, Zhangbei, Ailian, Longcheng, Longgang, SHENZHEN, China</i>

Phone: +86 13798599886
Fax: +86 13798599886
E-Mail: sales008@magingroup.cn