

LED DESK LAMP
with Wireless Charging



Factory Model: A13S

TABLE OF CONTENTS

Compliance Information..... 1

Before You Begin...

 Additional Warnings.....3

 In the Box.....3

Getting Started

 Setting Up the Lamp.....4

 Using the Lamp.....5

 Charging Your Devices.....6

 Storage & Maintenance.....7

Warranty Information.....8

Printed in China
v1. 07-2019

All product names, trademarks, and registered trademarks are property of their respective owners. All company, product, and service names used in this document are for identification purposes only. Use of these names, trademarks, and brands does not imply endorsement.

Before You Begin...
READ THIS MANUAL CAREFULLY AND SAVE FOR FUTURE REFERENCE

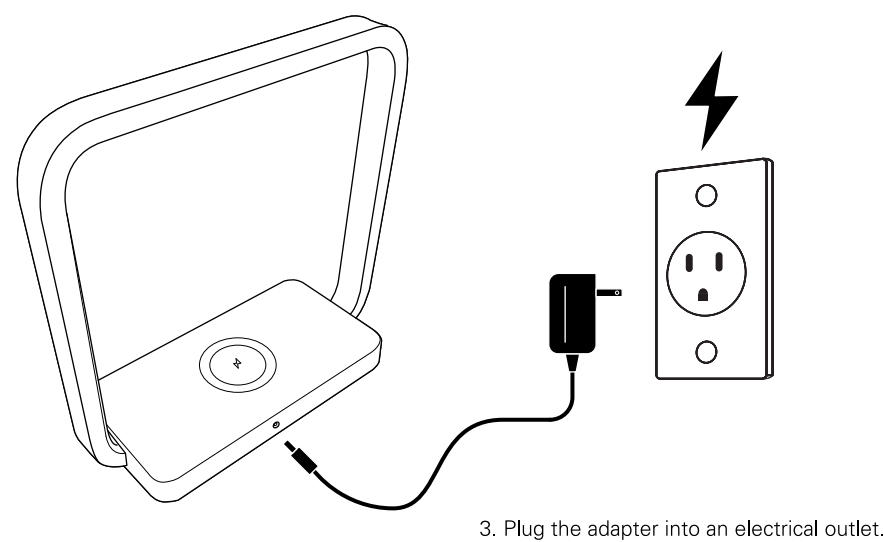
To ensure safe and proper use, read all safety information before using the device. Only use with manufacturer-approved batteries, chargers, accessories, and supplies.

- **THIS DEVICE IS NOT A TOY**, do NOT allow children or pets to use or play with this device.
- **Do not disassemble, modify, or repair the device.**
- Do not expose the device to extreme temperatures (heat or cold), open flames, humid, or wet conditions.
- **Do not submerge in water.**
- If using with a USB adapter, make sure the adapter is not damaged.
- Do not allow the USB port or the connectors of the supplied USB cable to be exposed to dust, or water, or come into contact with any conductive materials such as liquids, metallic powders, etc.
- Do NOT place any metal object onto the charging pad.
- Magnetic strip cards, including credit cards, phone cards, identification cards and boarding passes may be damaged by the magnetic field if placed on or near this device.
- Do not place this device on or near a microwave or similar kitchen appliance.
- This device should not be disposed of with regular household waste. Please consult the local authorities on the correct way to dispose of this device.
- This wireless charging pad is compatible with Qi-enabled devices, only.

Questions & Customer Support
For any issues concerning this product, please visit our website at SouthernTelecom.com and click on Product Support.

Setting Up the Lamp

1. Place the lamp on a sturdy, stable surface away from sources of water or heat.
2. Insert the pin of the supplied power adapter into the power input on the back of the lamp.



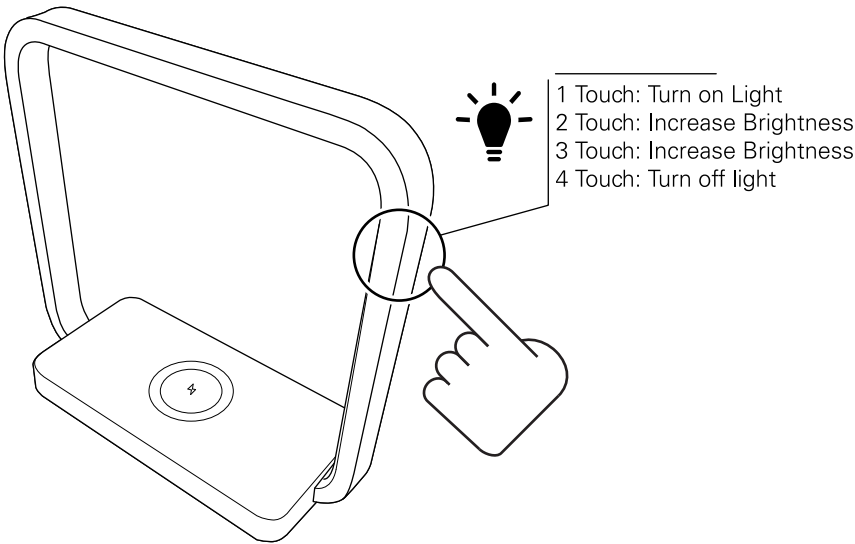
Warranty (cont'd)
NO WARRANTIES, WHETHER EXPRESS OR IMPLIED, INCLUDING, BUT NOT LIMITED TO, ANY IMPLIED WARRANTIES OF MERCHANTABILITY OR FITNESS FOR A PARTICULAR PURPOSE, OTHER THAN THOSE EXPRESSLY DESCRIBED ABOVE SHALL APPLY. DISTRIBUTOR FURTHER DISCLAIMS ALL WARRANTIES AFTER THE EXPRESS WARRANTY PERIOD STATED ABOVE. NO OTHER EXPRESS WARRANTY OR GUARANTY GIVEN BY ANY PERSON, FIRM OR ENTITY WITH RESPECT TO THE PRODUCT SHALL BE BINDING ON DISTRIBUTOR. REPAIR, REPLACEMENT, OR REFUND OF THE ORIGINAL PURCHASE PRICE - AT DISTRIBUTOR'S SOLE DISCRETION - ARE THE EXCLUSIVE REMEDIES OF THE CONSUMER. IN NO EVENT WILL DISTRIBUTOR OR ITS MANUFACTURERS BE LIABLE FOR ANY INCIDENTAL, DIRECT, INDIRECT, SPECIAL, PUNITIVE OR CONSEQUENTIAL DAMAGES (SUCH AS, BUT NOT LIMITED TO, DAMAGES FOR LOSS OF PROFITS, BUSINESS, SAVINGS, DATA OR RECORDS) CAUSED BY THE USE, MISUSE OR INABILITY TO USE THE PRODUCT. EXCEPT AS STATED HEREIN, NO OTHER WARRANTIES SHALL APPLY. NOTWITHSTANDING THE FOREGOING, CONSUMER'S RECOVERY AGAINST DISTRIBUTOR SHALL NOT EXCEED THE PURCHASE PRICE OF THE PRODUCT SOLD BY DISTRIBUTOR. THIS WARRANTY SHALL NOT EXTEND TO ANYONE OTHER THAN THE ORIGINAL CONSUMER WHO PURCHASED THE PRODUCT AND IS NOT TRANSFERABLE.

Some countries, states or provinces do not allow the exclusion or limitation of incidental or consequential damages or allow limitations on warranties, so limitation or exclusions may not apply to you. This warranty gives you specific legal rights, and you may have other rights that vary from state to state or province to province. Contact your authorized retailer to determine if another warranty applies.

Using the Lamp

Once the lamp is properly set up and plugged in, it can be used.

Touch anywhere along the arch to turn the light on. Touch again to increase the brightness and turn off.



Charging Your Device

Make sure that there are no objects on the charging pad or obstructing the connection between the charging pad and the Qi-enabled device that you are charging.

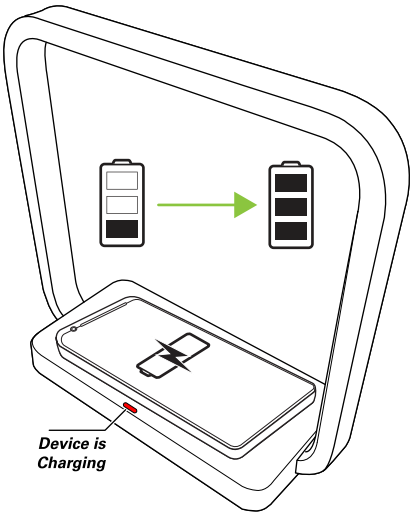
Place your Qi-enabled device onto the charging pad, the charging pad LED will **turn RED** and your device will automatically begin charging. Your device may display some kind of indicator that it is being charged wirelessly.

If your device does not begin recharging automatically, you may need to reposition it on the charging pad.

Note: When metal objects or non-compatible phones are detected on the charging pad, the LED indicator will **flash RED**.

Note: You may need to remove any removable smartphone case to charge properly.

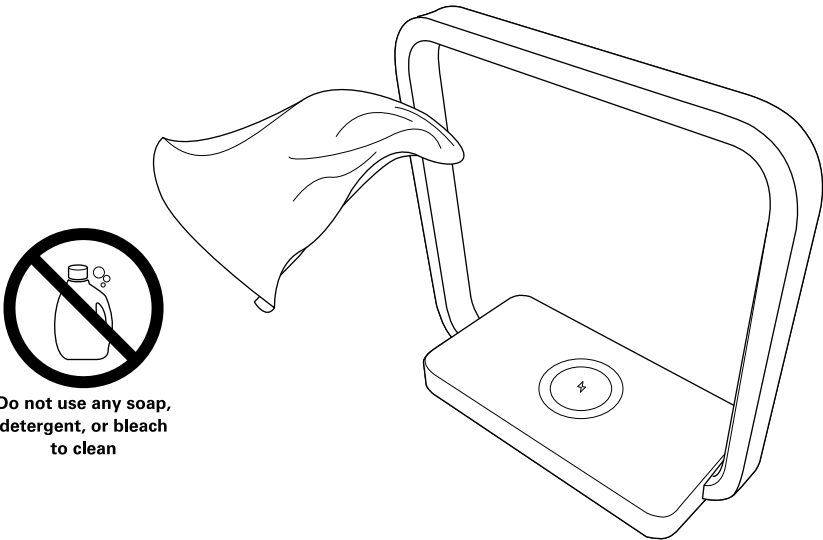
When your device is fully charged, disconnect and unplug the charging pad.



Storage & Maintenance

When not using the lamp, it is recommended that it is stored away in a safe location, away from sources of water or heat and free of dust and debris.

If the lamp is dirty, wipe them down with a **clean microfiber cloth**. Do not clean with water or any sort of cleaning liquid or detergent.



FCC Statement

This device complies with part 15 and part 18 of the FCC Rules. Operation is Subject To the following two conditions:

(1) This device may not cause harmful interference, and (2) this device must accept any interference received, including interference that may cause undesired operation. Changes or modifications not explicitly approved by the party responsible for compliance could void the user's authority to operate this equipment.

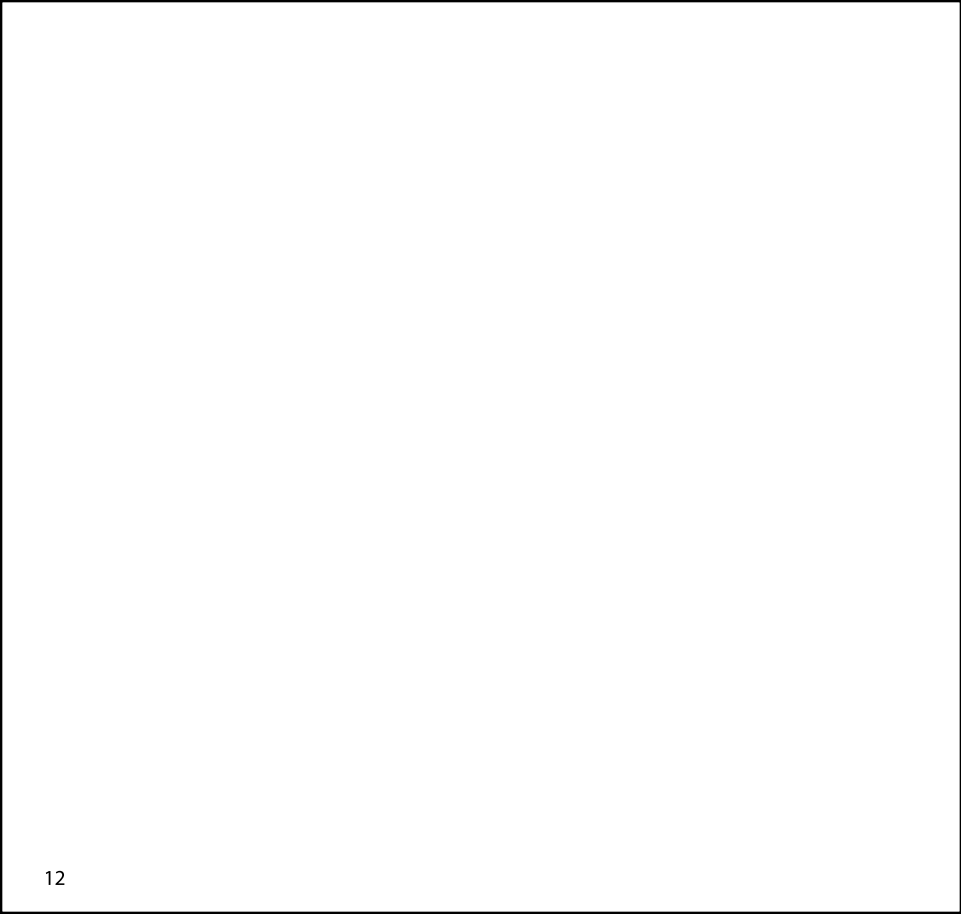
Note: this equipment has been tested and found to comply with the limits for a Class B digital device, pursuant to part 15 and part 18 of the FCC Rules. These limits are designed to provide reasonable protection against harmful interference in a residential installation. This equipment generates, uses and can radiate radio frequency energy and, if not installed and used in accordance with the instructions, may cause harmful interference to radio communications. However, there is no guarantee that interference will not occur in a particular installation. If this equipment does cause harmful interference to radio or television reception, which can be determined by turning the equipment off and on, the user is encouraged to try to correct the interference by one or more of the following measures:

- Reorient or relocate the receiving antenna.
- Increase the separation between the equipment and receiver.
 - Connect the equipment into an outlet on a circuit different from that to which the receiver is connected.
- Consult the dealer or an experienced radio/TV technician for help.

The equipment complies with FCC radiation exposure limits set forth for an uncontrolled environment. During the operation of device a distance of 15 cm surrounding the device and 20 cm above the top surface of the device must be respected.

This device complies with Part 18 of the FCC Rules. This equipment generates uses and can radiate radio frequency energy and, if not installed and used in accordance with the instructions, may cause harmful interference to radio communications. If this equipment does cause harmful interference to radio or television reception, which can be determined by turning the equipment off and on, the user is encouraged to try to correct the interference by one or more of the following measures:

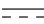
- Increase the separation between the equipment and any other radio device.
- Connect the equipment into an outlet on a circuit different from that to which the receiver is connected.




Radiation Exposure Information

This device has been evaluated to meet general RF exposure requirements.

Rating Label Definitions

 Direct current symbol.

 This symbol represents FCC Declaration of Conformity and compliance.