

Find the **accessories** you're looking for.

# Trackunit Spot 2 Installation Guide



**Raw Shield Mount**

Made to protect Raw in harsh environments, adding an extra layer of protection.



**RFID Card Reader**

USB RFID card reader is a easy tool to activate DualID RFID card access for operators.



**DualID Cards**

The DualID RFID card is an easy way to control access to your equipment.



**Splash Proof Relay**

Used when required, to interface Trackunit Raw to specific machine wiring signals or controls.



**Temperature Sensor**

Connect to Raw to measure temperature conditions in your environment.



**Ferrite**

Designed and certified for use in Japan with TU-501 and TU600-x models.



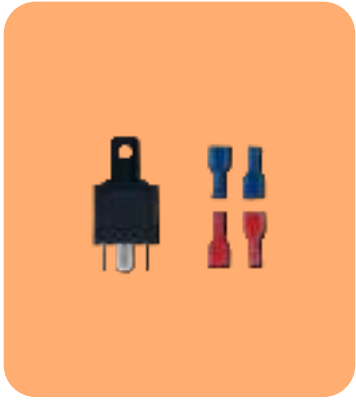
**Power Cable**

Versatile solutions to connect Trackunit Raw to any type of machine.



**DualID II Bracket**

Made to protect DualID II in harsh environments, adding an extra layer of protection.



**Standard Relays**

Used when required, to interface Trackunit Raw to specific machine wiring signals or controls.

**Help** is here. Whenever and however you need it.



**Help Center**

Installation, activation, and onboarding info can be found at [helpcenter.trackunit.com](http://helpcenter.trackunit.com)



**Customer Success**

Please reach out to our experienced support team at [support@trackunit.com](mailto:support@trackunit.com)



**Order**

Already know what you need? Place your order at [trackunit.com](http://trackunit.com)

Trackunit Spot

# Empowering Non-Powered Equipment



## One Platform

Add attachments and unpowered equipment to the same platform.



## One View

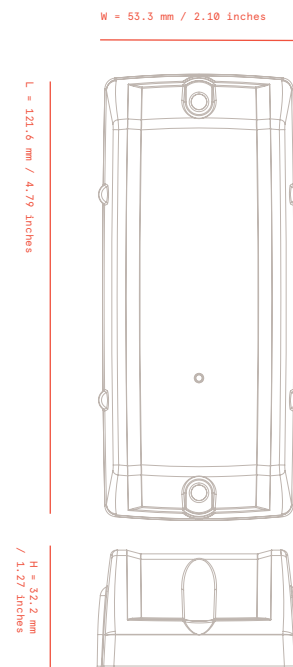
Track your equipment and attachments alongside the rest of your fleet.



## One Minute

On-site installation takes only one minute.

## Product Information



## Overview

Trackunit Spot is a battery-powered telematics solution that provides performance, durability, and flexibility to manage your fleet of non-powered assets, machines, or equipment.

## Dimensions

- Length: 121.6 mm (4.79")
- Width: 53.3 mm (2.10")
- Height: 32.2 mm (1.27")
- Weight: 150g (5.3 oz)

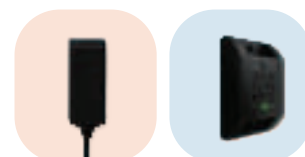
## Tech Specs

- Network: LTE-M1 / NB-IoT
- Approvals: CE, FCC/IC, and PTCRB
- GNSS: GPS, GLONASS, BeiDou, Galileo, and QZSS
- Battery: 3.6V / 2 x 3.6Ah
- Capacity: 4000 pings
- Temperature: -30°C to +60°C (-22F to +140F)
- Environmental Class: IP66K, IP69K, and UL94-V0
- 3 Axis Accelerometer

## Included

- Spot
- 2x M4 (5/32") Screws
- User Guide

## Compatible With



Raw

Kin

Installation

# How to Install the Spot

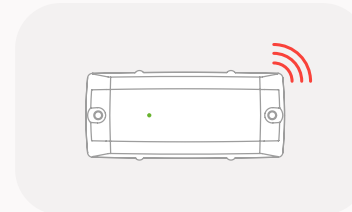
## 1. Mounting Orientation

To get the most optimal performance out of the Spot:



### Vertical Mounting

Mount the Spot upright with the Antenna facing the sky. The LED on the front will be on the bottom of the device.

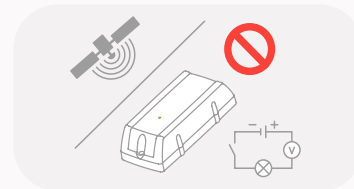


### Horizontal Mounting

Mount the Spot horizontally with the Antenna facing the sky. The LED on the front will be on the bottom of the device.

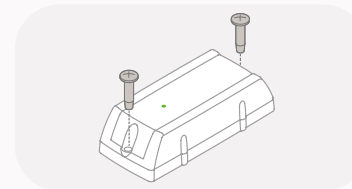
## 2. Mounting the Spot

Install the Spot by inserting the two M4 (5/32") screws through the Mounting Holes and into the Mounting Surface. Use a TX20 (0.6 Nm) screwdriver to tighten the M4 screws; be careful not to overtighten.



### Mounting Location

Avoid mounting the Spot under metal objects or next to electrical wiring.



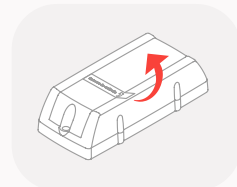
### Screw Mounting

- Mounting Hole: 4 mm (0.15")
- Screw Type: M4 (5/32") Screws

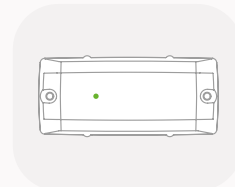
## 3. Activating the Spot

Remove the activation sticker from the front of the Spot and expose it to direct light to trigger device activation. Activate the Spot after installation or after the onboarding process.

**Note:** You need to activate the Spot before it transmits data.



Remove the activation sticker covering the light sensor.



The LED indicator on the front of the Spot will flash green, indicating the device is active.



Use Trackunit Manager to configure how often Spot transmits an updated location (default is one time per day)

**Note:** During the activation process, it can take up to 3 seconds for the LED Indicator on the Spot to start flashing.

Trackunit Spot

# How to Use the Spot



**Meet Trackunit SPOT, a battery-powered telematics device that tracks your equipment.**



Track your equipment 1, 2, 3, or 4 times per day or even every second, the choice is yours



Turn on movement detection so you never have to worry about theft or unauthorized use.



Turn on the tracking feature, allowing you to follow and locate your equipment.

# Help is here, whenever you need it.



## Help Center

Installation, activation, and onboarding info can be found at [helpcenter.trackunit.com](https://helpcenter.trackunit.com)



## Customer Success

Please reach out to our experienced support team at [support@trackunit.com](mailto:support@trackunit.com)



## Order

Already know what you need? Place your order at [trackunit.com](https://trackunit.com)