



Test Report

Product Name : 802.11b P3 Wireless LAN PCMCIA Card
Model No. : WN-110
FCC ID : QDWWN110

Applicant : AirVast Technology Inc.

Address : 4F-1, No. 1, Ln. 21, Hsin Hua Rd., Kueishan Industrial
Park, Taoyuan 330, Taiwan, R.O.C.

Date of Receipt : Jan 28, 2003

Date of Test : Feb 10, 2003

Report No. : 032L203FI

The test results relate only to the samples tested.

The test report shall not be reproduced except in full without the written approval of QuieTek Corporation.

This report must not be used to claim product endorsement by NVLAP any agency of the U.S. Government

Test Report Certification

Test Date : Feb 10, 2003

Report No. : 032L203FI



Accredited by NIST (NVLAP)

NVLAP Lab Code: 200347-0

Product Name : 802.11b P3 Wireless LAN PCMCIA Card

Applicant : AirVast Technology Inc.

Address : 4F-1, No. 1, Ln. 21, Hsin Hua Rd., Kueishan
Industrial Park, Taoyuan 330, Taiwan, R.O.C.

Manufacturer : AirVast Technology Inc.

Model No. : WN-110

FCC ID. : QDWWN110

Rated Voltage : AC 120V/60Hz

Trade Name : AirVast

Measurement Standard : FCC Part 15 Subpart C Paragraph 15.247

Measurement Procedure : ANSI C63.4: 1992

Test Result : Complied



NVLAP Lab Code : 200347-0

The Test Results relate only to the samples tested.

The test report shall not be reproduced except in full without the written approval of QuieTek Corporation.

This report must not be used to claim product endorsement by NVLAP any agency of the U.S. Government

Documented By : Cordelia Huang
(Cordelia Huang)

Tested By : Jim Wu
(Jim Wu)

Approved By : Gene Chang
(Gene Chang)

TABLE OF CONTENTS

Description	Page
1. GENERAL INFORMATION	5
1.1 EUT Description.....	5
1.2 Operational Description.....	6
1.3 Tested System Details.....	6
1.4 Configuration of Tested System	7
1.5 EUT Exercise Software	7
1.6 Test Facility	8
2. Conducted Emission.....	9
2.1 Test Equipment.....	9
2.2 Test Setup	9
2.3 Limits	9
2.4 Test Procedure	10
2.5 Test Result of Conducted Emission.....	11
3. Peak Power Output	13
3.1. Test Equipment.....	13
3.2. Test Setup	13
3.3. Limits	13
3.4. Test Result of Peak Power Output	14
4. RF Exposure Evaluation	15
4.1. Limits	15
4.2. Test Procedure	15
4.3. Test Result of RF Exposure Evaluation.....	16
5. Radiated Emission	17
5.1. Test Equipment.....	17
5.2. Test Setup	17
5.3. Limits	18
5.4. Test Procedure	19
5.5. Test Result of Radiated Emission.....	20
6. Band Edge	26
6.1. Test Equipment.....	26
6.2. Test Setup	26
6.3. Limits	27
6.4. Test Procedure	27
6.5. Test Result of Band Edge	28
6.6. Test Equipment.....	32
6.7. Test Setup	32
6.8. Limits	32
6.9. Test Result of Occupied Bandwidth	33
7. Power Density	36
7.1. Test Equipment.....	36
7.2. Test Setup	36

7.3.	Limits	36
7.4.	Test Result of Power Density	37
8.EMI Reduction Method During Compliance Testing		40
Attachment 1: EUT Test Photographs		
Attachment 2: EUT Detailed Photographs		

1.2 Operational Description

EUT is a 802.11b P3 Wireless LAN PCMCIA Card with 11 channels. This device provided four kind of transmitting speed 1,2,5.5 and 11Mbps. The device of RF carrier is DQPSK, DB PSK and CCK.

The device adapts direct sequence spread spectrum modulation. The Connector antenna was scolded on PCB provides diversity function to improve the receiving function.

This Broadband Wireless Router is an IEEE 802.11b Wireless LAN adapter. It allows your computer to connect to a wireless network and to share resources, such as files or printers without being bound to the network wires. Operation in 2.4GHz Direst Sequence Spread Spectrum (DSSS) radio transmission, the Broadband Wireless Router transfers data at speeds up to 64/128-bit Wired Equivalent Protection (WEP) algorithm is used. In addition, its standard compliance ensures that it can communicate with any 802.11b network.

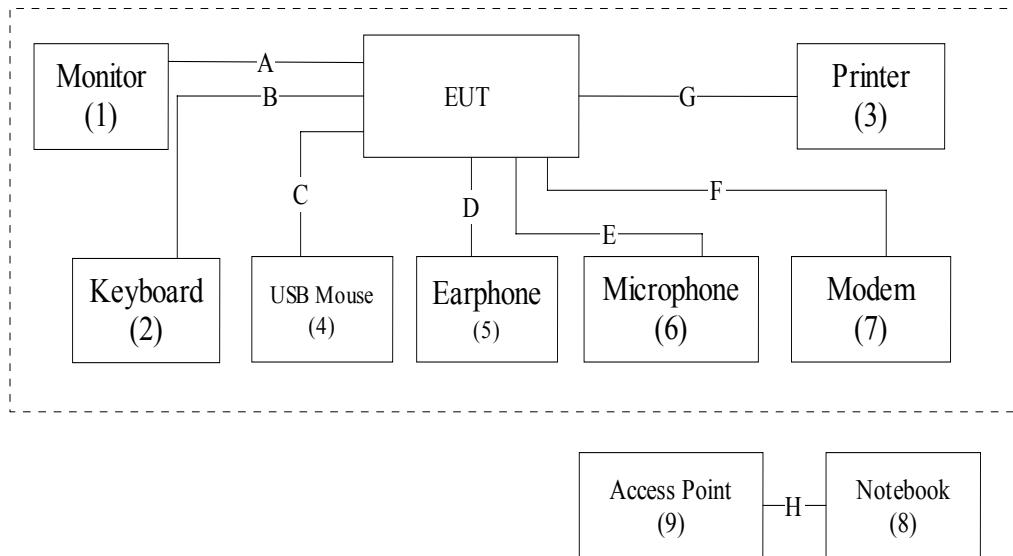
1.3 Tested System Details

The types for all equipment, plus descriptions of all cables used in the tested system (including inserted cards) are:

	Product	Manufacturer	Model No.	Serial No.	Power Cord
(1)	Monitor	SONY	CPD-G500	2738406	Non-shielded, 1.8m
(2)	Keyboard	HP	SK-2506	C00083358	N/A
(3)	Printer	HP	HP DESKJET 640C	TH0CQEGFSC	Non-shielded, 1.9m
(4)	USB Mouse	Logitech	M-BE58	LZE11405011	N/A
(5)	Earphone	PRO.2	PH-124	N/A	N/A
(6)	Microphone	N/A	S-124	N/A	N/A
(7)	Modem	ACEEX	DM-1414	0102027553	Non-Shielded 1.8m
(8)	Notebook	DELL	PP01L	N/A	DoC
(9)	Access Point	ASUS	AL300	N/A	N/A

	Signal Cable Type	Signal Cable Description
A.	VGA Cable	Shielded, 1.6m
B.	Keyboard Cable	Shielded, 1.8m
C.	USB Mouse Cable	Shielded, 1.0m
D.	Earphone Cable	Shielded, 1.6m
E.	Microphone Cable	Shielded, 1.8m
F.	Modem Cable	Shielded, 1.5m
G.	Printer Cable	Shielded, 1.2m
H.	LAN Cable	Non-shielded, 1.5m

1.4 Configuration of Tested System



1.5 EUT Exercise Software

- (1) Setup the EUT and simulators as shown on 1.4
- (2) Turn on the power of all equipment.
- (3) Notebook PC reads data from disk.
- (4) Data will be transmitting through EUT.
- (5) The transmitted status will be shown on the monitor.
- (6) Repeat the above procedure 1.5.3 to 1.5.5

1.6 Test Facility

Ambient conditions in the laboratory:

Items	Required (IEC 68-1)	Actual
Temperature (°C)	15-35	20-35
Humidity (%RH)	25-75	50-65
Barometric pressure (mbar)	860-1060	950-1000

Site Description: November 3, 1998 File on
Federal Communications Commission
FCC Engineering Laboratory
7435 Oakland Mills Road
Columbia, MD 21046
Reference 31040/SIT1300F2

August 30, 2001 Accreditation on NVLAP
NVLAP Lab Code: 200347-0



Site Name: Quietek Corporation

Site Address: No.75-1, Wang-Yeh Valley, Yung-Hsing,
Chiung-Lin, Hsin-Chu County,
Taiwan, R.O.C.
TEL : 886-3-592-8858 / FAX : 886-3-592-8859
E-Mail: service@quietek.com

2. Conducted Emission

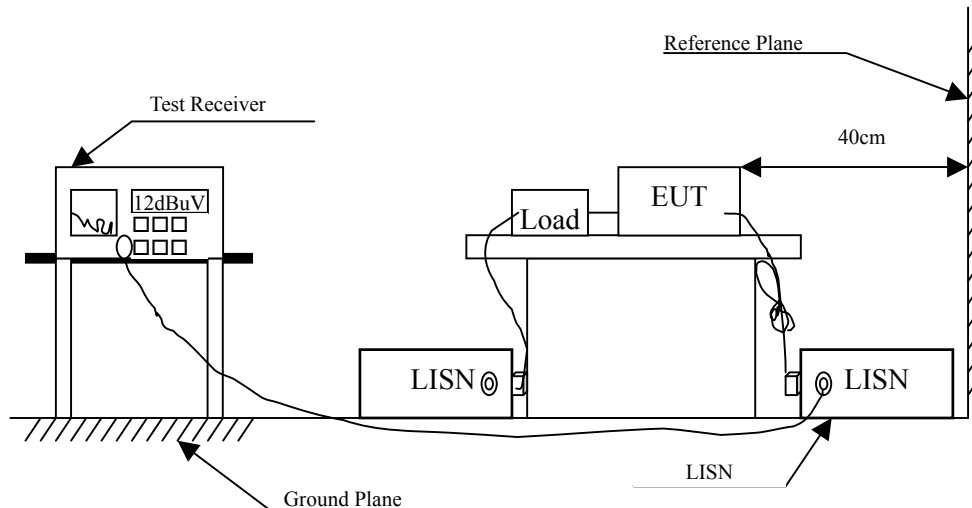
2.1 Test Equipment

The following test equipment are used during the conducted emission test:

Item	Instrument	Manufacturer	Type No./Serial No	Last Cal.	Remark
1	Test Receiver	R & S	ESCS 30/825442/17	May, 2002	
2	L.I.S.N.	R & S	ESH3-Z5/825016/6	May, 2002	EUT
3	L.I.S.N.	Kyoritsu	KNW-407/8-1420-3	May, 2002	Peripherals
4	Pulse Limiter	R & S	ESH3-Z2	N/A	
5	No.2 Shielded Room			N/A	

Note: All equipment upon which need to calibrated are with calibration period of 1 year.

2.2 Test Setup



2.3 Limits

FCC Part 15 Subpart B Paragraph 15.207 (dBuV) Limit		
Frequency MHz	Limits	
	uV	dBuV
0.15 - 0.50	66-56	56-46
0.50-5.0	56	46
5.0 - 30	60	50

Remarks : In the above table, the tighter limit applies at the band edges.

2.4 Test Procedure

The EUT and simulators are connected to the main power through a line impedance stabilization network (L.I.S.N.). This provides a 50 ohm /50uH coupling impedance for the measuring equipment. The peripheral devices are also connected to the main power through a LISN that provides a 50ohm/50uH coupling impedance with 50ohm termination. (Please refer to the block diagram of the test setup and photographs.)

Both sides of A.C. line are checked for maximum conducted interference. In order to find the maximum emission, the relative positions of equipment and all of the interface cables must be changed according to ANSI C63.4:1992 on conducted measurement.

Conducted emissions were investigated over the frequency range from 0.15MHz to 30MHz using a receiver bandwidth of 9kHz.

2.5 Test Result of Conducted Emission

Product : 802.11b P3 Wireless LAN PCMCIA Card
Test Item : Conducted Emission
Test Mode : Normal Operation

Frequency	Cable	LISN	Reading	Emission	Limits
	Loss	Factor	Level	Level	
MHz	dB	dB	dBuV	dBuV	dBuV
=====					
Line 1					
Quasi-Peak:					
*	0.176	0.01	0.12	53.03	53.15
	0.234	0.02	0.14	43.97	44.14
	0.293	0.04	0.16	40.09	40.29
	0.587	0.07	0.23	22.67	22.97
	3.703	0.18	0.40	28.87	29.45
	22.570	0.37	0.57	35.85	36.79
Average:					
	0.176	0.01	0.11	40.40	40.52
	0.234	0.02	0.14	31.00	31.17
	0.293	0.04	0.16	30.50	30.70
	0.587	0.07	0.23	15.40	15.70
	3.703	0.18	0.40	22.10	22.68
	22.570	0.37	0.57	35.10	36.04

Note:

1. All Reading Levels are Quasi-Peak value.
2. “ * ”, means this data is the worst emission level.
3. Emission Level = Reading Level + LISN Factor + Cable Loss.

Product : 802.11b P3 Wireless LAN PCMCIA Card
Test Item : Conducted Emission
Test Mode : Normal Operation

Frequency	Cable	LISN	Reading	Emission	Limits
	Loss	Factor	Level	Level	
MHz	dB	dB	dBuV	dBuV	dBuV
=====					
Line 2					
Quasi-Peak:					
*	0.175	0.01	0.11	52.63	52.75
	0.236	0.02	0.14	43.71	43.88
	0.412	0.05	0.20	32.47	32.72
	1.646	0.13	0.33	22.09	22.55
	3.824	0.18	0.41	29.53	30.12
	22.570	0.37	0.57	35.05	35.99
Average:					
	0.175	0.01	0.11	39.60	39.72
	0.236	0.02	0.14	31.80	31.97
	0.412	0.05	0.20	21.10	21.35
	1.646	0.13	0.33	19.70	20.16
	3.824	0.18	0.41	21.40	21.99
	22.570	0.37	0.57	34.80	35.74

Note:

1. All Reading Levels are Quasi-Peak value.
2. “ * ”, means this data is the worst emission level.
3. Emission Level = Reading Level + LISN Factor + Cable Loss.

3. Peak Power Output

3.1. Test Equipment

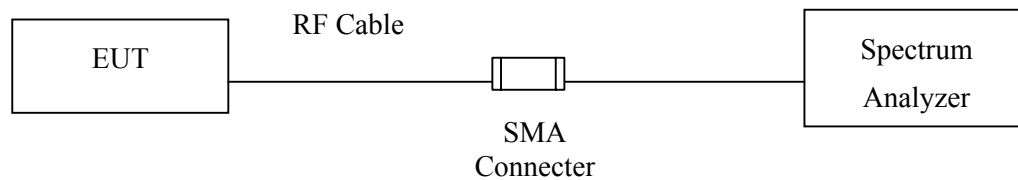
The following test equipments are used during the radiated emission tests:

	Equipment	Manufacturer	Model No./Serial No.	Last Cal.
X	Spectrum Analyzer	Advantest	R3272 / 72421194	May, 2002

Note: 1. All equipment upon which need to calibrated are with calibration period of 1 year.
2. Mark "X" test instruments are used to measure the final test results.

3.2. Test Setup

Conduction Power Measurement



3.3. Limits

The maximum peak power shall be less 1 Watt.

3.4. Test Result of Peak Power Output

Product : 802.11b P3 Wireless LAN PCMCIA Card
Test Item : Peak Power Output
Test Site : No.1 OATS
Test Mode : Normal Operation

Data Speed: 11Mbps

Channel No.	Frequency (MHz)	Measurement	Required Limit	Result
1	2413.20	13.21dBm	1 Watt= 30 dBm	Pass
6	2438.20	12.84dBm	1 Watt= 30 dBm	Pass
11	2463.10	13.16dBm	1 Watt= 30 dBm	Pass

4. RF Exposure Evaluation

4.1. Limits

According to FCC 1.1310: The criteria listed in the following table shall be used to evaluate the environment impact of human exposure to radio frequency (RF) radiation as specified in 1.1307(b)

LIMITS FOR MAXIMUM PERMISSIBLE EXPOSURE (MPE)

Frequency Range (MHz)	Electric Field Strength (V/m)	Magnetic Field Strength (A/m)	Power Density (mW/cm ²)	Average Time (Minutes)
(A) Limits for Occupational/ Control Exposures				
300-1500	--	--	F/300	6
1500-100,000	--	--	5	6
(B) Limits for General Population/ Uncontrolled Exposures				
300-1500	--	--	F/1500	6
1500-100,000	--	--	1	30

F= Frequency in MHz

Friis Formula

Friis transmission formula: $P_d = (P_{out} * G) / (4 * \pi * r^2)$

Where

P_d = power density in mW/cm²

P_{out} = output power to antenna in mW

G = gain of antenna in linear scale

π = 3.1416

R = distance between observation point and center of the radiator in cm

P_d is the limit of MPE, 1 mW/cm². If we know the maximum gain of the antenna and the total power input to the antenna, through the calculation, we will know the distance r where the MPE limit is reached.

4.2. Test Procedure

Software provided by client enabled the EUT to transmit and receive data at lowest, middle and highest channel individually.

The temperature and related humidity: 18°C and 78% RH.

4.3. Test Result of RF Exposure Evaluation

Product : 802.11b P3 Wireless LAN PCMCIA Card
 Test Item : RF Exposure Evaluation
 Test Site : No.1 OATS
 Test Mode : Normal Operation

Antenna Gain

Antenna Gain: The maximum Gain measured in fully anechoic chamber is 0dBi or 1.51 in linear scale.

Output Power Into Antenna & RF Exposure Evaluation Distance:

Channel	Channel Frequency (MHz)	Output Power to Antenna (mW)	Minimum Allowable Distance ® From Skin(cm)
1 (11Mbps)	2413.20	20.941	1.290
6 (11Mbps)	2438.20	19.230	1.237
11 (11Mbps)	2463.10	20.701	1.283

The distance r (4th column) calculated from the Fries transmission formula is far shorter than 20 cm separation requirement. So, RF exposure limit warning or SAR test are not required.

5. Radiated Emission

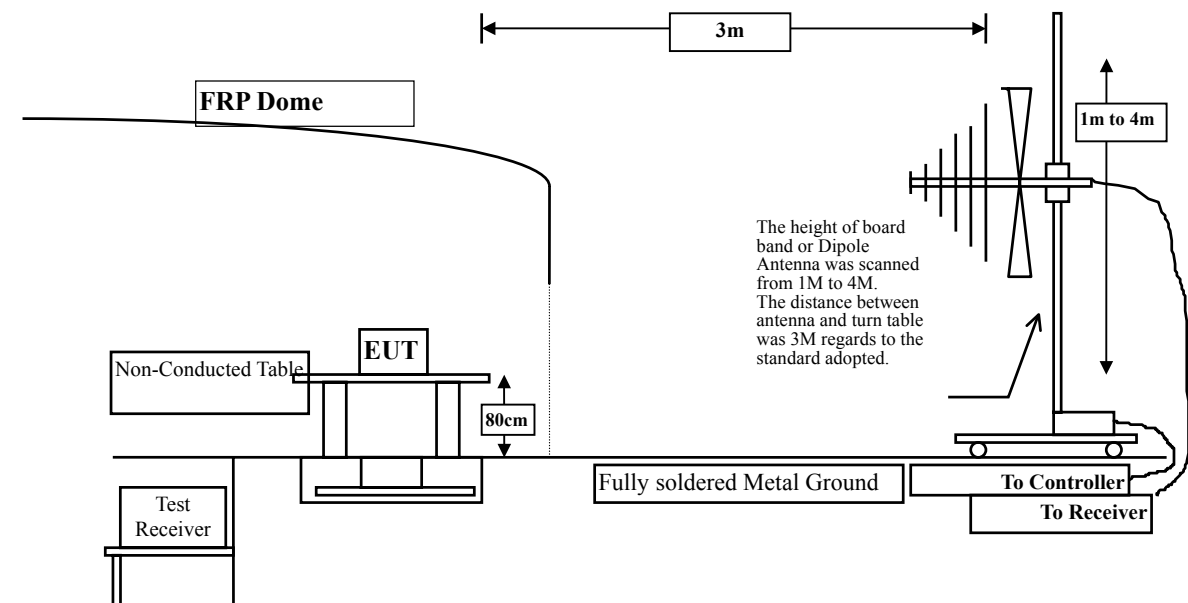
5.1. Test Equipment

The following test equipment are used during the radiated emission test:

Test Site		Equipment	Manufacturer	Model No./Serial No.	Last Cal.
Site # 1	X	Test Receiver	R & S	ESCS 30 / 825442/14	May, 2002
	X	Spectrum Analyzer	Advantest	R3261C / 71720140	May, 2002
	X	Pre-Amplifier	HP	8447D/3307A01812	May, 2002
	X	Bilog Antenna	Chase	CBL6112B / 12452	Sep., 2002
	X	Horn Antenna	EM	EM6917 / 103325	May, 2002
Site # 2		Test Receiver	R & S	ESCS 30 / 825442/17	May, 2002
		Spectrum Analyzer	Advantest	R3261C / 71720609	May, 2002
		Pre-Amplifier	HP	8447D/3307A01814	May, 2002
		Bilog Antenna	Chase	CBL6112B / 2455	Sep., 2002
		Horn Antenna	EM	EM6917 / 103325	May, 2002

- Note:
1. All equipments that need to calibrate are with calibration period of 1 year.
 2. Mark "X" test instruments are used to measure the final test results.

5.2. Test Setup



5.3. Limits

➤ General Radiated Emission Limits

Emissions radiated outside of the specified frequency bands, except for harmonics, shall be attenuated by at least 20dB below the level of the fundamental or to the general radiated emission limits in paragraph 15.209, whichever is the lesser attenuation.

FCC Part 15 Subpart C Paragraph 15.209 Limits		
Frequency MHz	uV/m @3m	dBuV/m@3m
30-88	100	40
88-216	150	43.5
216-960	200	46
Above 960	500	54

- Remarks :
1. RF Voltage (dBuV) = 20 log RF Voltage (uV)
 2. In the Above Table, the tighter limit applies at the band edges.
 3. Distance refers to the distance in meters between the measuring instrument antenna and the closed point of any part of the device or system.

5.4. Test Procedure

The EUT and its simulators are placed on a turn table which is 0.8 meter above ground. The turn table can rotate 360 degrees to determine the position of the maximum emission level.

The EUT was positioned such that the distance from antenna to the EUT was 3 meters.

The antenna can move up and down between 1 meter and 4 meters to find out the maximum emission level.

Both horizontal and vertical polarization of the antenna are set on measurement. In order to find the maximum emission, all of the interface cables must be manipulated according to ANSI C63.4:1992 on radiated measurement.

The additional latch filter below 1GHz was used to measure the level of harmonics radiated emission during field strength of harmonics measurement.

The bandwidth below 1GHz setting on the field strength meter (R&S Test Receiver ESCS 30)is 120 kHz, above 1GHz are 1 MHz.

The frequency range from 30MHz to 10th harmonics is checked.

5.5. Test Result of Radiated Emission

Product : 802.11b P3 Wireless LAN PCMCIA Card
 Test Item : Harmonic Radiated Emission
 Test Site : No.1 OATS
 Test Mode : Channel 1 (11Mbps)

Frequency	Cable	Probe	PreAMP	Reading	Emission	Margin	Limit
	Loss	Factor		Level	Level		
MHz	dB	dB/m	dB	dBuV	dBuV/m	dB	dBuV/m

Horizontal

Peak Detector:

4823.920	4.24	31.28	34.38	50.37	51.52	22.48	74.00
7235.960	5.63	36.54	34.94	40.44	47.67	26.33	74.00
9647.920	7.01	37.98	34.43	44.78	55.34	18.66	74.00
12059.92	8.40	38.59	33.24	37.80	51.55	22.45	74.00
14471.56	7.09	41.89	34.97	36.24	50.25	23.75	74.00

Average Detector:

9647.880	7.01	37.98	34.43	41.07	51.63	2.37	54.00
----------	------	-------	-------	-------	-------	------	-------

Vertical

Peak Detector:

4823.960	4.24	31.28	34.38	53.24	54.39	19.61	74.00
7235.960	5.63	36.54	34.94	40.89	48.12	25.88	74.00
9648.000	7.01	37.98	34.43	44.20	54.76	19.24	74.00
12060.08	8.40	38.59	33.24	38.52	52.27	21.73	74.00
14472.00	7.09	41.89	34.97	35.20	49.21	24.79	74.00

Average Detector:

4823.920	4.24	31.28	34.38	51.77	52.92	1.08	54.00
9648.000	7.01	37.98	34.43	38.50	49.06	4.94	54.00

Note:

1. All Readings below 1GHz are Quasi-Peak, above are performed with peak and/or average measurements as necessary.
2. Receiver setting (Peak Detector) : RBW:1MHz; VBW:1MHz; Span:100MHz °
3. Receiver setting (AVG Detector) : RBW:1MHz; VBW:30Hz; Span:20MHz °
4. Emission Level = Reading Level + Probe Factor + Cable Loss – PreAMP.
5. The average measurement was not performed when the peak measured data under the limit of average detection. If the readings given are average, peak measurement should also be supplied.

Product : 802.11b P3 Wireless LAN PCMCIA Card
 Test Item : Harmonic Radiated Emission
 Test Site : No.1 OATS
 Test Mode : Channel 6 (11Mbps)

Frequency	Cable	Probe	PreAMP	Reading	Emission	Margin	Limit
	Loss	Factor		Level	Level		
MHz	dB	dB/m	dB	dBuV	dBuV/m	dB	dBuV/m

Horizontal

Peak Detector:

4874.000	4.27	31.37	34.37	50.39	51.67	22.33	74.00
7311.240	5.67	36.56	34.97	40.89	48.15	25.85	74.00
9747.880	7.07	38.13	34.31	45.04	55.93	18.07	74.00
12185.04	8.47	38.51	33.31	37.19	50.85	23.15	74.00
14622.35	7.12	41.48	35.01	36.61	50.20	23.80	74.00

Average Detector:

9747.880	7.07	38.13	34.31	40.58	51.47	2.53	54.00
----------	------	-------	-------	-------	-------	------	-------

Vertical

Peak Detector:

4837.920	4.25	31.33	34.38	53.41	54.62	19.38	74.00
7310.880	5.67	36.56	34.97	40.48	47.74	26.26	74.00
9747.800	7.07	38.13	34.31	42.07	52.96	21.04	74.00
12185.08	8.47	38.51	33.31	36.42	50.08	23.92	74.00
14621.98	7.12	41.48	35.01	36.55	50.14	23.86	74.00

Average Detector:

4873.960	4.27	31.37	34.37	51.65	52.93	1.07	54.00
----------	------	-------	-------	-------	-------	------	-------

Note:

1. All Readings below 1GHz are Quasi-Peak, above are performed with peak and/or average measurements as necessary.
2. Receiver setting (Peak Detector) : RBW:1MHz; VBW:1MHz; Span:100MHz °
3. Receiver setting (AVG Detector) : RBW:1MHz; VBW:30Hz; Span:20MHz °
4. Emission Level = Reading Level + Probe Factor + Cable Loss – PreAMP.
5. The average measurement was not performed when the peak measured data under the limit of average detection. If the readings given are average, peak measurement should also be supplied.

Product : 802.11b P3 Wireless LAN PCMCIA Card
 Test Item : Harmonic Radiated Emission
 Test Site : No.1 OATS
 Test Mode : Channel 11 (11Mbps)

Frequency	Cable	Probe	PreAMP	Reading	Emission	Margin	Limit
	Loss	Factor		Level	Level		
MHz	dB	dB/m	dB	dBuV	dBuV/m	dB	dBuV/m

Horizontal

Peak Detector:

4923.840	4.30	31.43	34.36	50.11	51.48	22.52	74.00
7386.120	5.72	36.59	35.02	39.33	46.62	27.38	74.00
9847.720	7.13	38.18	34.18	42.56	53.68	20.32	74.00
12310.20	8.53	38.43	33.39	37.45	51.03	22.97	74.00
14772.38	7.19	40.96	35.07	36.81	49.90	24.10	74.00

Average Detector:

--

Vertical

Peak Detector:

4924.000	4.30	31.43	34.36	53.24	54.61	19.39	74.00
7385.760	5.72	36.59	35.02	38.66	45.95	28.05	74.00
9847.800	7.13	38.18	34.18	42.32	53.44	20.56	74.00
12309.92	8.53	38.43	33.39	36.91	50.49	23.51	74.00
14772.53	7.19	40.96	35.07	36.89	49.98	24.02	74.00

Average Detector:

4924.000	4.30	31.43	34.36	51.61	52.98	1.02	54.00
----------	------	-------	-------	-------	-------	------	-------

Note:

1. All Readings below 1GHz are Quasi-Peak, above are performed with peak and/or average measurements as necessary.
2. Receiver setting (Peak Detector) : RBW:1MHz; VBW:1MHz; Span:100MHz °
3. Receiver setting (AVG Detector) : RBW:1MHz; VBW:30Hz; Span:20MHz °
4. Emission Level = Reading Level + Probe Factor + Cable Loss – PreAMP.
5. The average measurement was not performed when the peak measured data under the limit of average detection. If the readings given are average, peak measurement should also be supplied.

Product : 802.11b P3 Wireless LAN PCMCIA Card
 Test Item : General Radiated Emission
 Test Site : No.1 OATS
 Test Mode : Channel 1

Frequency	Cable	Probe	PreAMP	Reading	Emission	Margin	Limit
	Loss	Factor		Level	Level		
MHz	dB	dB/m	dB	dBuV	dBuV/m	dB	dBuV/m

Horizontal

Quasi-Peak Detector:

132.820	2.14	12.82	0.00	20.49	35.45	4.55	40.00
* 194.900	2.74	9.74	0.00	25.28	37.76	2.24	40.00
263.770	3.40	13.41	0.00	23.35	40.16	6.84	47.00
397.630	4.26	16.60	0.00	23.41	44.27	2.73	47.00
664.380	5.65	18.95	0.00	16.96	41.56	5.44	47.00
795.330	6.34	20.34	0.00	5.33	32.01	14.99	47.00

Vertical

Quasi-Peak Detector:

221.090	2.99	10.68	0.00	19.90	33.57	12.43	46.00
263.770	3.40	13.80	0.00	18.21	35.41	10.59	46.00
* 307.420	3.79	14.00	0.00	21.48	39.27	6.73	46.00
665.350	5.66	19.33	0.00	11.42	36.41	9.59	46.00
905.910	6.92	21.39	0.00	3.91	32.22	13.78	46.00

Note:

1. All Readings below 1GHz are Quasi-Peak, above are performed with peak and/or average measurements as necessary.
2. “ * ”, means this data is the worst emission level.
3. Emission Level = Reading Level + Probe Factor + Cable Loss.

Product : 802.11b P3 Wireless LAN PCMCIA Card
 Test Item : General Radiated Emission
 Test Site : No.1 OATS
 Test Mode : Channel 6

Frequency	Cable	Probe	PreAMP	Reading	Emission	Margin	Limit
	Loss	Factor		Level	Level		
MHz	dB	dB/m	dB	dBuV	dBuV/m	dB	dBuV/m
=====							

Horizontal

Quasi-Peak Detector:

210.420	2.89	9.87	0.00	25.75	38.51	4.99	43.50
307.420	3.79	13.81	0.00	22.83	40.43	5.57	46.00
352.040	4.02	15.58	0.00	18.53	38.14	7.86	46.00
398.600	4.27	16.62	0.00	20.56	41.45	4.55	46.00
* 664.380	5.65	18.95	0.00	18.00	42.60	3.40	46.00
797.270	6.34	20.34	0.00	3.48	30.16	15.84	46.00

Vertical

Quasi-Peak Detector:

189.080	2.68	8.03	0.00	23.68	34.39	9.11	43.50
263.770	3.40	13.80	0.00	18.60	35.80	10.20	46.00
* 307.420	3.79	14.00	0.00	21.64	39.43	6.57	46.00
398.600	4.27	16.31	0.00	16.97	37.54	8.46	46.00
665.350	5.66	19.33	0.00	12.80	37.79	8.21	46.00
997.090	7.38	22.07	0.00	3.95	33.40	20.60	54.00

Note:

1. All Readings below 1GHz are Quasi-Peak, above are performed with peak and/or average measurements as necessary.
2. “ * ”, means this data is the worst emission level.
3. Emission Level = Reading Level + Probe Factor + Cable Loss.

Product : 802.11b P3 Wireless LAN PCMCIA Card
 Test Item : General Radiated Emission
 Test Site : No.1 OATS
 Test Mode : Channel 11

Frequency	Cable	Probe	PreAMP	Reading	Emission	Margin	Limit
	Loss	Factor		Level	Level		
MHz	dB	dB/m	dB	dBuV	dBuV/m	dB	dBuV/m
=====							

Horizontal

Quasi-Peak Detector:

221.090	2.99	10.43	0.00	23.12	36.54	9.46	46.00
263.770	3.40	13.41	0.00	23.53	40.34	5.66	46.00
307.420	3.79	13.81	0.00	22.89	40.49	5.51	46.00
352.040	4.02	15.58	0.00	20.69	40.30	5.70	46.00
* 397.630	4.26	16.60	0.00	23.20	44.06	1.94	46.00
664.380	5.65	18.95	0.00	18.32	42.92	3.08	46.00

Vertical

Quasi-Peak Detector:

189.080	2.68	8.03	0.00	21.31	32.02	11.48	43.50
263.770	3.40	13.80	0.00	18.27	35.47	10.53	46.00
* 307.420	3.79	14.00	0.00	21.72	39.51	6.49	46.00
398.600	4.27	16.31	0.00	17.03	37.60	8.40	46.00
665.350	5.66	19.33	0.00	13.38	38.37	7.63	46.00
746.830	6.09	20.18	0.00	12.09	38.36	7.64	46.00

Note:

1. All Readings below 1GHz are Quasi-Peak, above are performed with peak and/or average measurements as necessary.
2. “ * ”, means this data is the worst emission level.
3. Emission Level = Reading Level + Probe Factor + Cable Loss.

6. Band Edge

6.1. Test Equipment

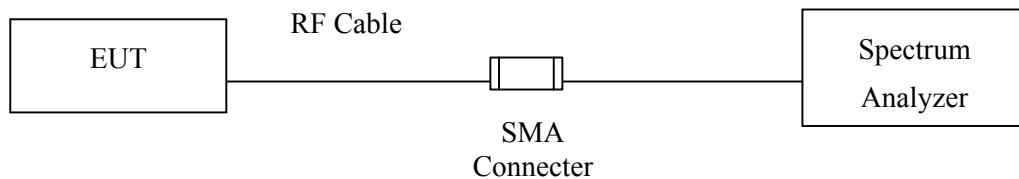
The following test equipments are used during the band edge tests:

Equipment	Manufacturer	Model No./Serial No.	Last Cal.
X Spectrum Analyzer	Advantest	R3272 / 72421194	May, 2002
X Test Receiver	R & S	ESCS 30 / 825442/14	May, 2002
X Spectrum Analyzer	Advantest	R3261C / 71720140	May, 2002
X Pre-Amplifier	HP	8447D/3307A01812	May, 2002
X Bilog Antenna	Chase	CBL6112B / 12452	Sep., 2002
X Horn Antenna	EM	EM6917 / 103325	May, 2002

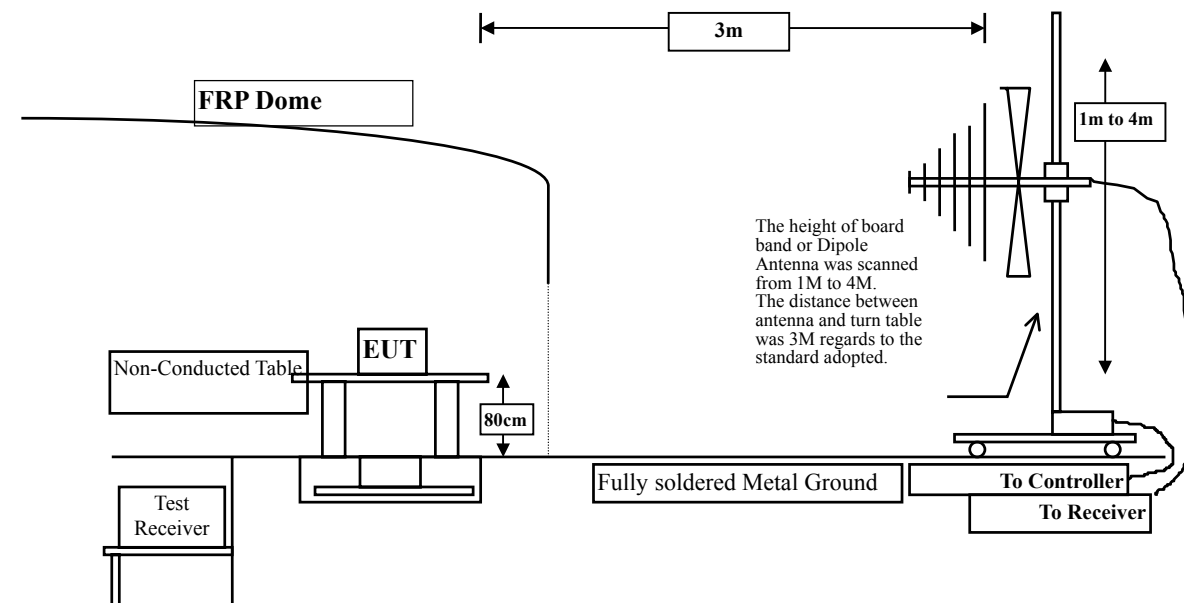
- Note: 1. All equipments that need to calibrate are with calibration period of 1 year.
2. Mark "X" test instruments are used to measure the final test results.

6.2. Test Setup

RF Conducted Measurement:



RF Radiated Measurement:



6.3. Limits

In any 100 kHz bandwidth outside the frequency band in which the spread spectrum intentional radiator is operating, the radio frequency power that is produced by the intentional radiator shall be at least 20 dB below that in the 100 kHz bandwidth within the band that contains the highest level of the desired power, based on either an RF conducted or a radiated measurement. Attenuation below the general limits specified in Section 15.209(a) is not required. In addition, radiated emissions which fall in the restricted bands, as defined in Section 15.205(a), must also comply with the radiated emission limits specified in Section 15.209(a) (see Section 15.205(c)).

6.4. Test Procedure

The EUT and its simulators are placed on a turn table which is 0.8 meter above ground. The turn table can rotate 360 degrees to determine the position of the maximum emission level. The EUT was positioned such that the distance from antenna to the EUT was 3 meters.

The antenna can move up and down between 1 meter and 4 meters to find out the maximum emission level.

Both horizontal and vertical polarization of the antenna are set on measurement. In order to find the maximum emission, all of the interface cables must be manipulated according to ANSI C63.4:1992 on radiated measurement.

The bandwidth below 1GHz setting on the field strength meter (R&S Test Receiver ESCS 30)is 120 kHz, above 1GHz are 1 MHz.

6.5. Test Result of Band Edge

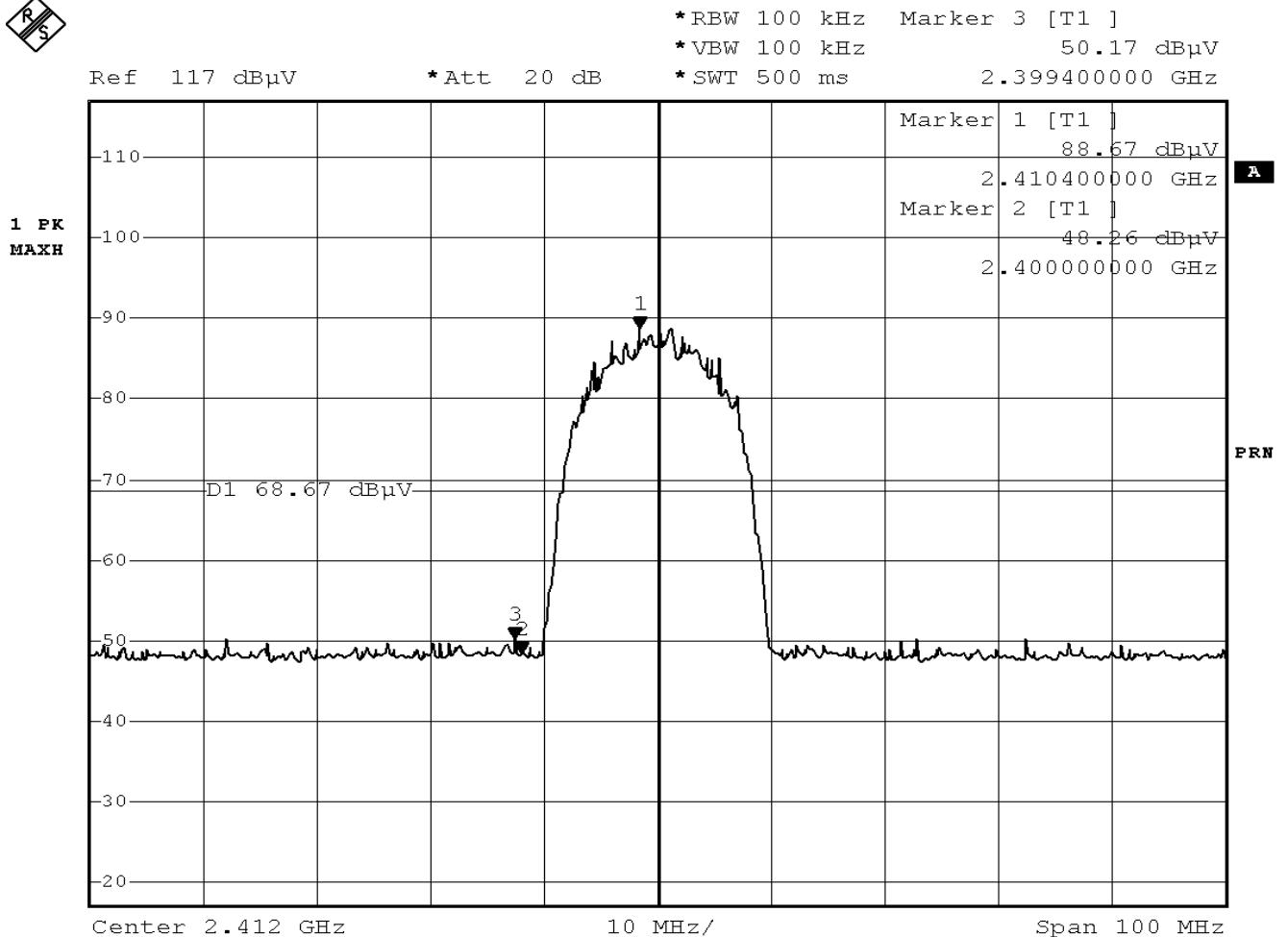
Product : 802.11b P3 Wireless LAN PCMCIA Card
 Test Item : Band Edge
 Test Site : No.1 OATS
 Test Mode : Channel 1 (11Mbps)

RF Radiated Measurement:

Channel No.	Frequency (MHz)	Required Limit (dBc)	Result
1 (Horizontal)	<2400	>20	Pass

Figure Channel 1:

(Horizontal)



Date: 10.FEB.2003 10:46:55

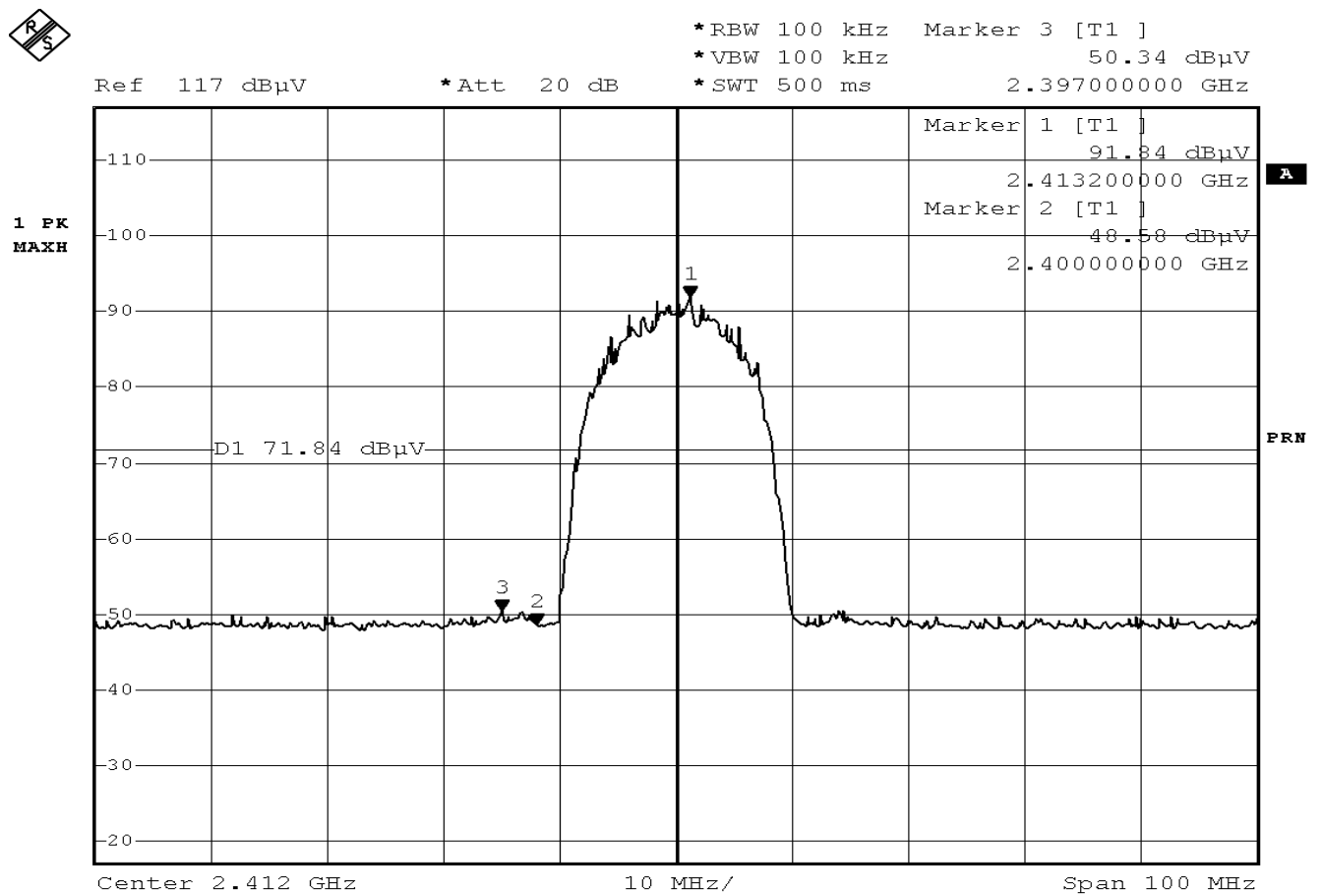
Product : 802.11b P3 Wireless LAN PCMCIA Card
 Test Item : Band Edge
 Test Site : No.1 OATS
 Test Mode : Channel 1 (11Mbps)

RF Radiated Measurement:

Channel No.	Frequency (MHz)	Required Limit (dBc)	Result
1 (Vertical)	<2400	>20	Pass

Figure Channel 1:

(Vertical)



Date: 10.FEB.2003 10:39:57

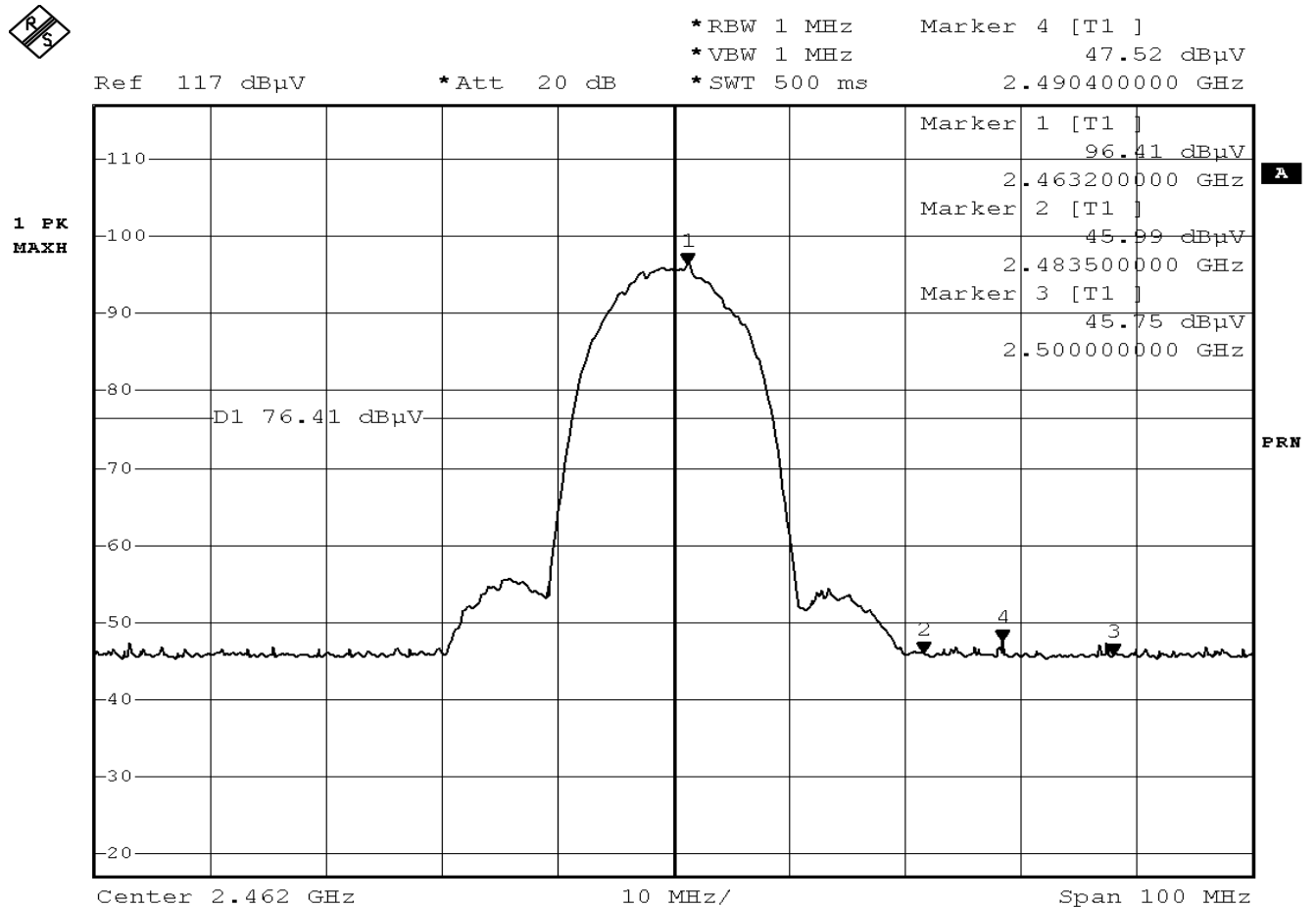
Product : 802.11b P3 Wireless LAN PCMCIA Card
 Test Item : Band Edge
 Test Site : No.1 OATS
 Test Mode : Channel 11(11Mbps)

RF Radiated Measurement:

Channel No.	Frequency (MHz)	Reading Level (dBuV)	Emission Level (dBuV/m)	Peak Limit (dBuV/m)	Avg. Limit (dBuV/m)	Result
11(Horizontal)	2490.4	47.52	43.45	74	54	Pass

Figure Channel 1:

(Horizontal)



Date: 10.FEB.2003 11:16:05

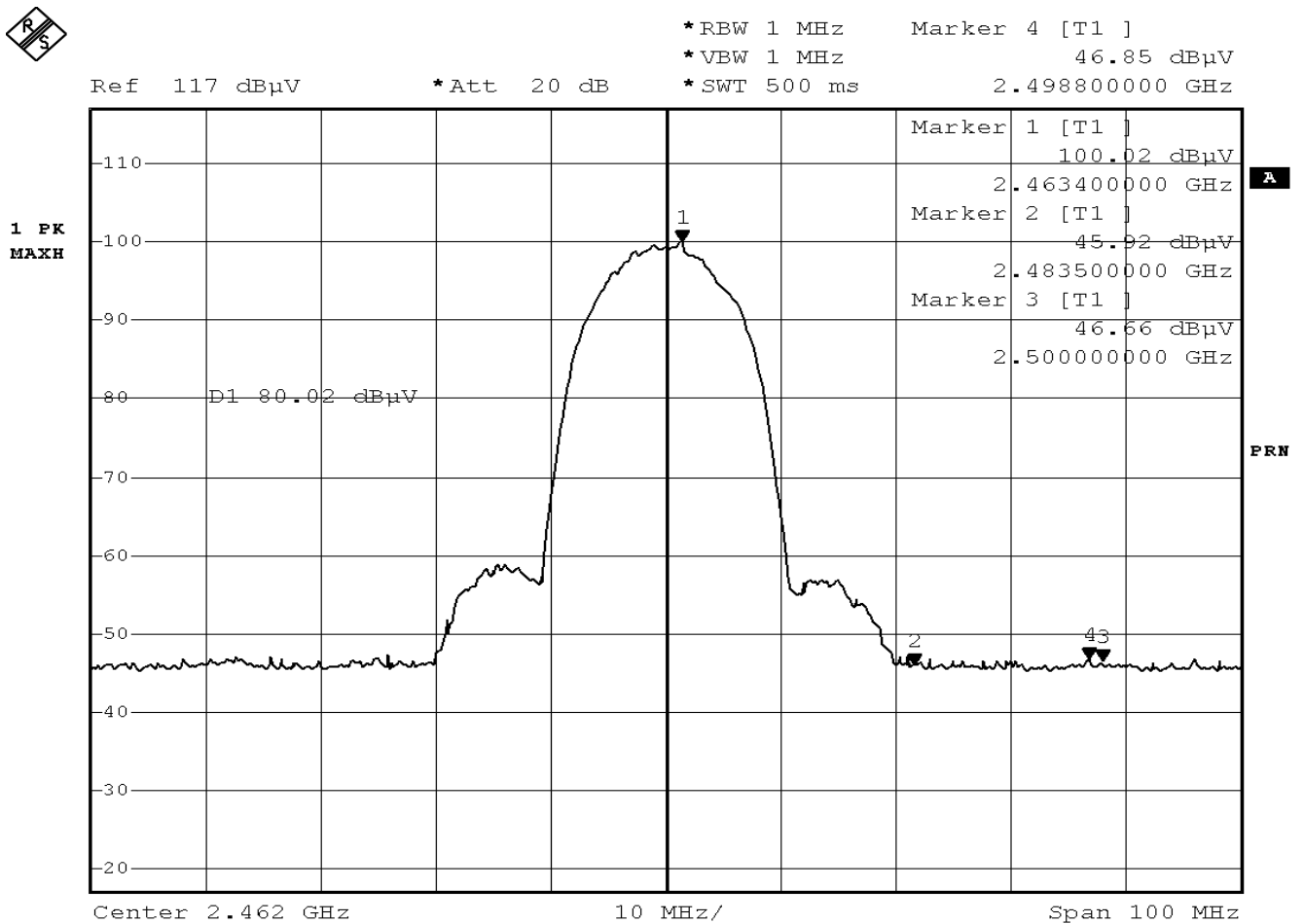
Note: The average measurement was not performed when the peak measured data under the limit of average detection. If the readings given are average, peak measurement should also be supplied.

Product : 802.11b P3 Wireless LAN PCMCIA Card
 Test Item : Band Edge
 Test Site : No.1 OATS
 Test Mode : Channel 1 1(11Mbps)

RF Radiated Measurement:

Channel No.	Frequency (MHz)	Reading Level (dBuV)	Emission Level (dBuV/m)	Peak Limit (dBuV/m)	Avg. Limit (dBuV/m)	Result
11 (Vertical)	2498.8	46.85	42.78	74	54	Pass

Figure Channel 1: (Vertical)



Date: 10.FEB.2003 11:08:17

Note: The average measurement was not performed when the peak measured data under the limit of average detection. If the readings given are average, peak measurement should also be supplied.

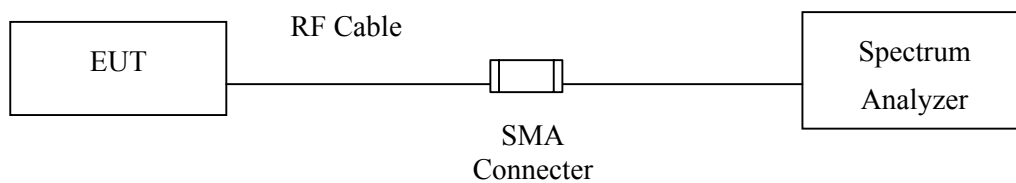
6.6. Test Equipment

The following test equipments are used during the radiated emission tests:

	Equipment	Manufacturer	Model No./Serial No.	Last Cal.
X	Spectrum Analyzer	Advantest	R3272 / 72421194	May, 2002

Note: 1. All equipment upon which need to calibrated are with calibration period of 1 year.
2. Mark "X" test instruments are used to measure the final test results.

6.7. Test Setup



6.8. Limits

The minimum 6dB bandwidth shall be at least 500kHz.

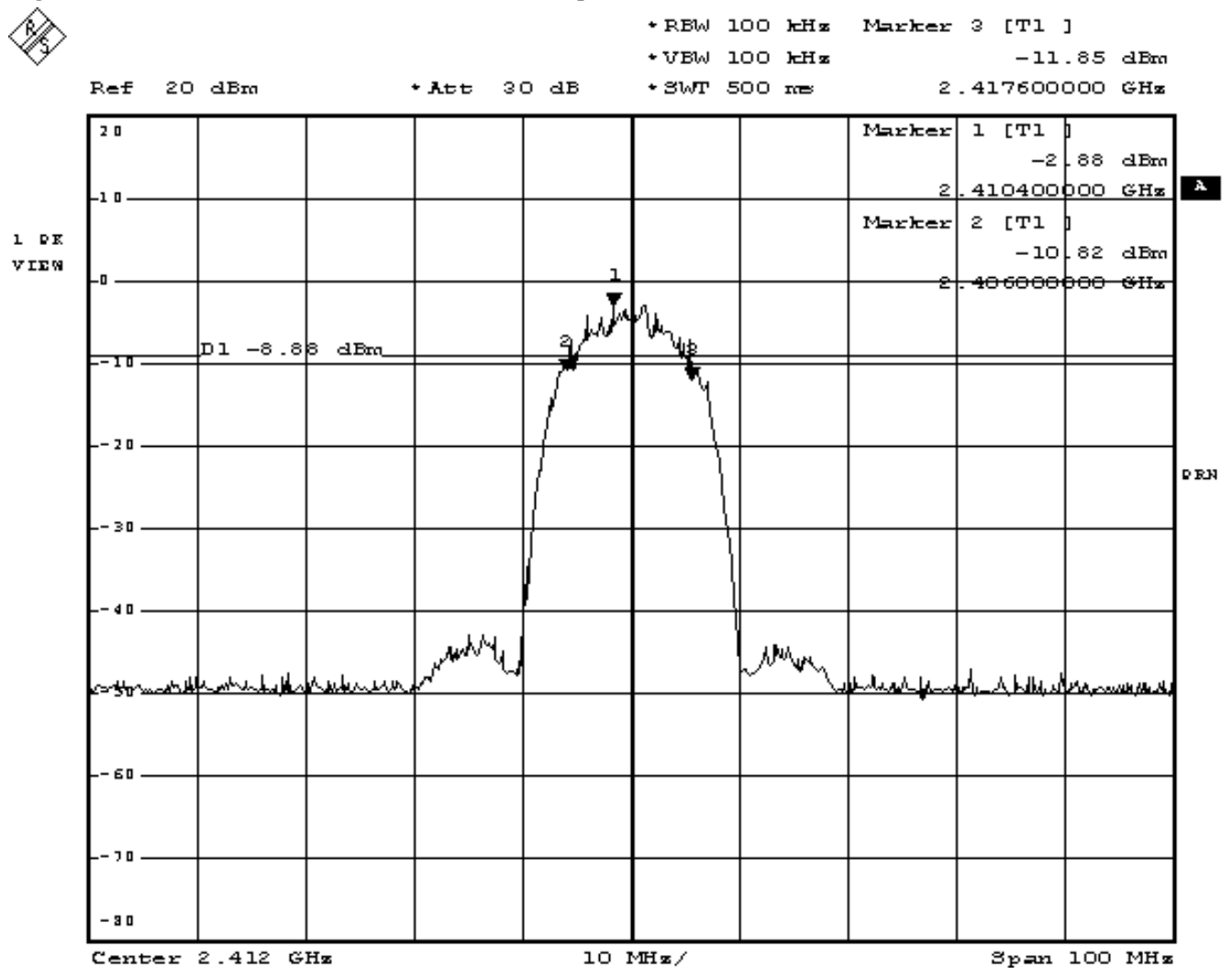
6.9. Test Result of Occupied Bandwidth

Product : 802.11b P3 Wireless LAN PCMCIA Card
 Test Item : Occupied Bandwidth
 Test Site : No.1 OATS
 Test Mode : Channel 1

Channel No.	Frequency (MHz)	Measurement Level (kHz)	Required Limit (kHz)	Result
1 (11Mbps)	2410.4	11600	>500	Pass

Figure Channel 1:

11Mbps

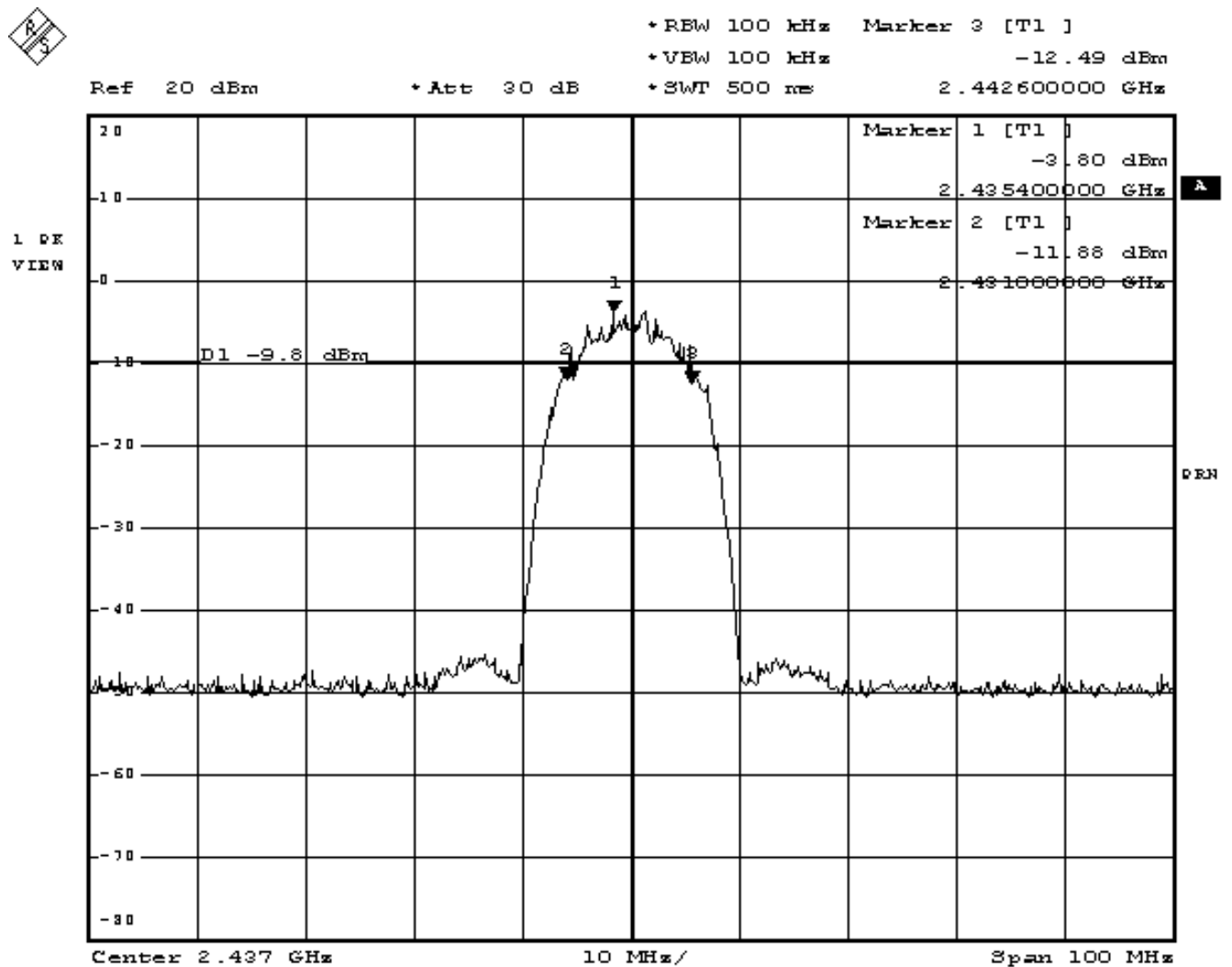


Date: 11.FEB.2003 10:06:43

Product : 802.11b P3 Wireless LAN PCMCIA Card
 Test Item : Occupied Bandwidth
 Test Site : No.1 OATS
 Test Mode : Channel 6

Channel No.	Frequency (MHz)	Measurement Level (kHz)	Required Limit (kHz)	Result
6 (11Mbps)	2435.4	11600	>500	Pass

Figure Channel 6: 11Mbps

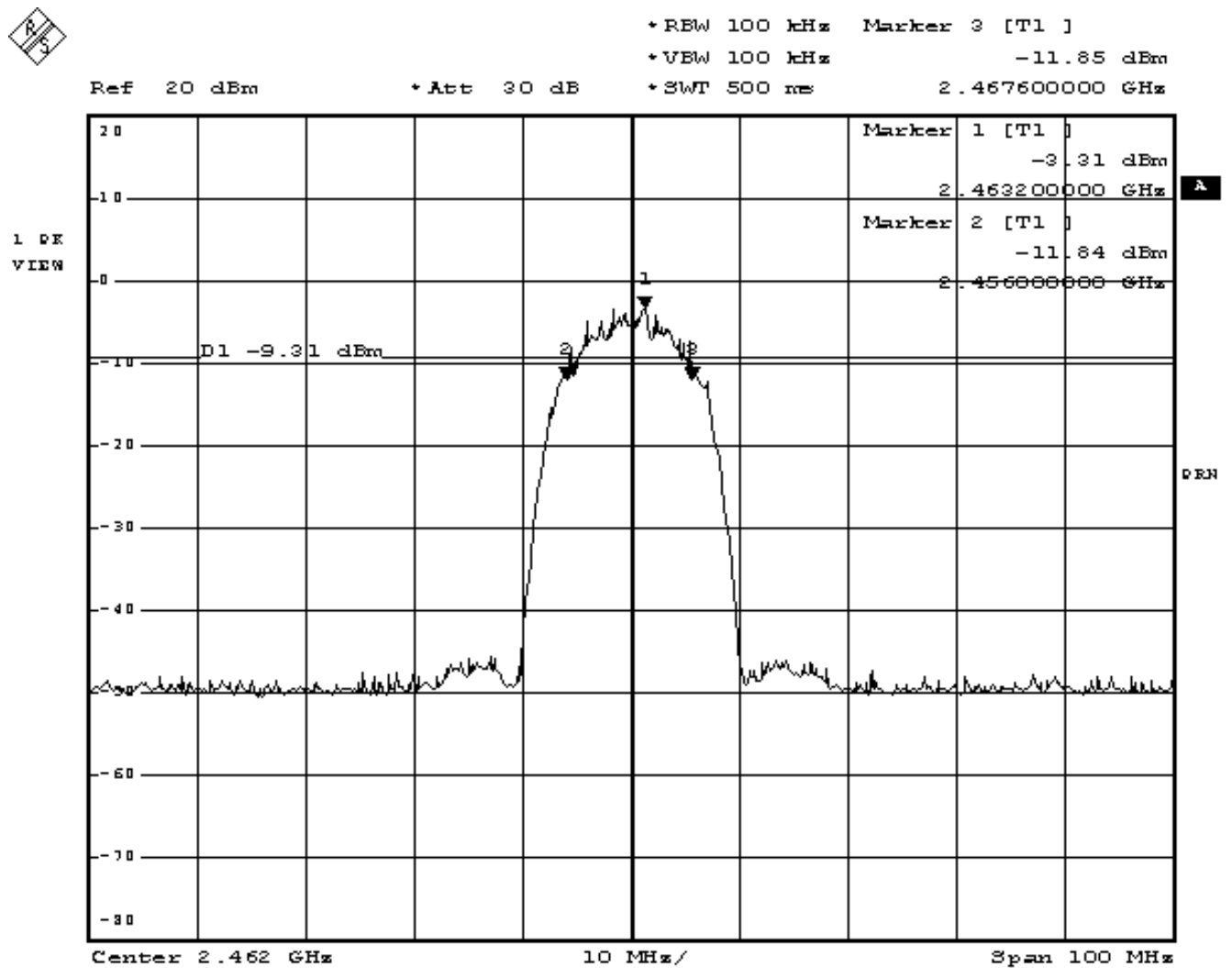


Date: 11.FEB.2003 10:04:04

Product : 802.11b P3 Wireless LAN PCMCIA Card
 Test Item : Occupied Bandwidth
 Test Site : No.1 OATS
 Test Mode : Channel 11

Channel No.	Frequency (MHz)	Measurement Level (kHz)	Required Limit (kHz)	Result
11 (11Mbps)	2463.2	11600	>500	Pass

Figure Channel 11: 11Mbps



Date: 11.FEB.2003 10:02:10

7. Power Density

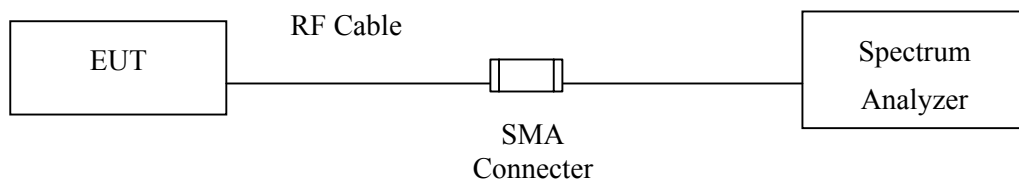
7.1. Test Equipment

The following test equipments are used during the radiated emission tests:

	Equipment	Manufacturer	Model No./Serial No.	Last Cal.
X	Spectrum Analyzer	Advantest	R3272 / 72421194	May, 2002

Note: 1. All equipment upon which need to calibrated are with calibration period of 1 year.
2. Mark "X" test instruments are used to measure the final test results.

7.2. Test Setup



7.3. Limits

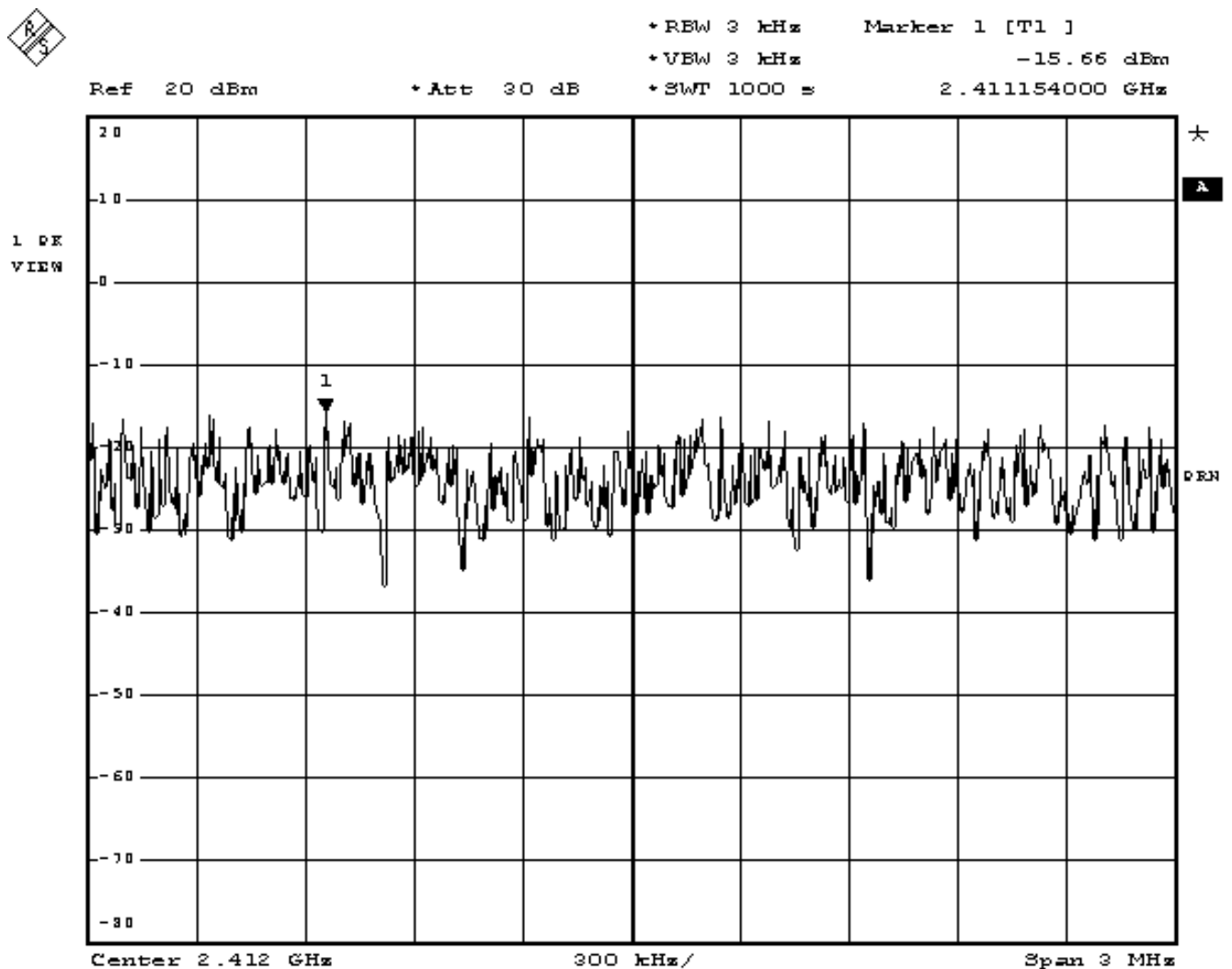
The transmitted power density averaged over any 1 second interval shall not be greater +8dBm in any 3kHz bandwidth.

7.4. Test Result of Power Density

Product : 802.11b P3 Wireless LAN PCMCIA Card
 Test Item : Power Density
 Test Site : No.1 OATS
 Test Mode : Channel 1

Channel No.	Frequency (MHz)	Measurement Level (dBm)	Required Limit (dBm)	Result
1 (11Mbps)	2411.154	-15.66	< 8dBm	Pass

Figure Channel 1: 11Mbps



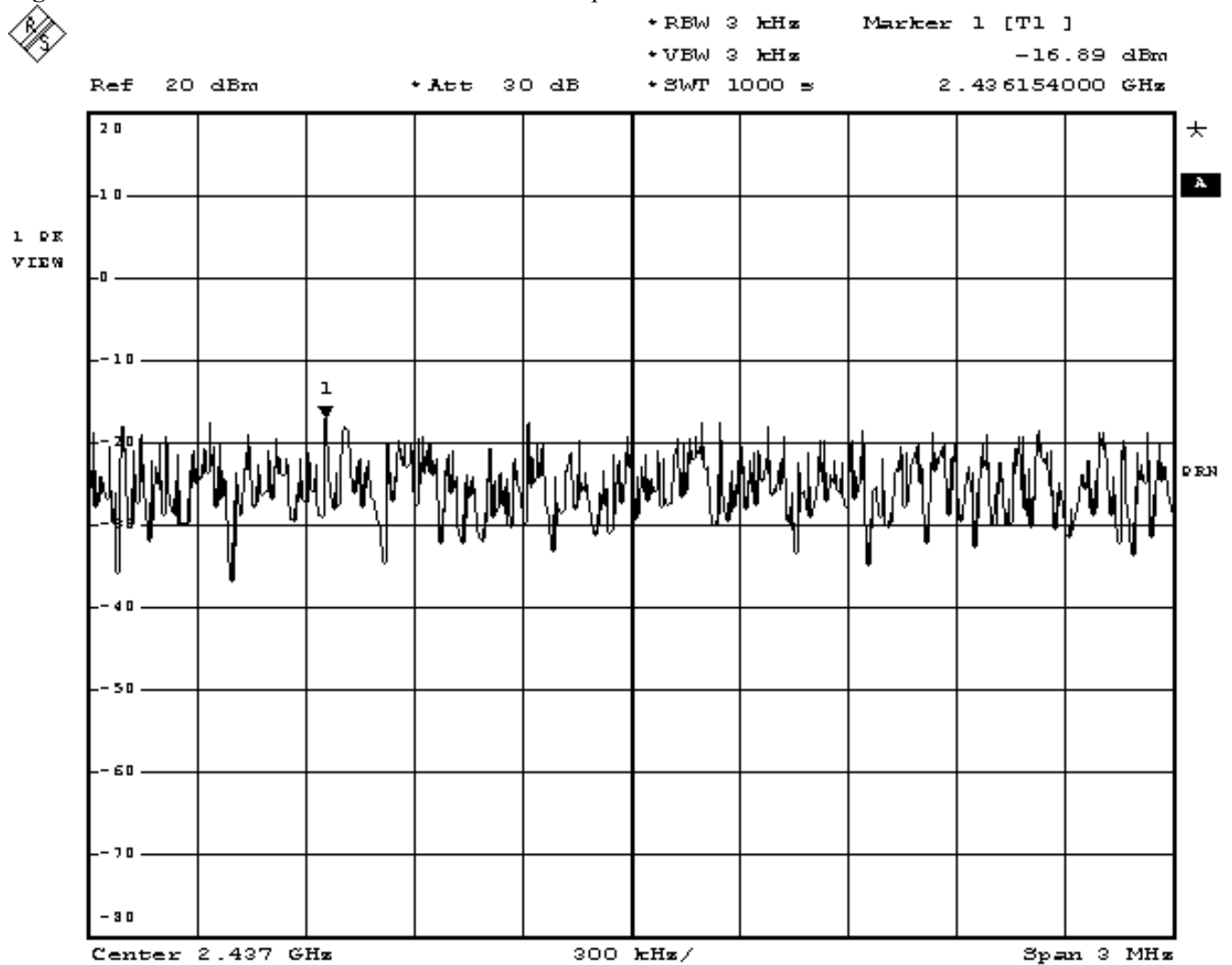
Date: 11.FEB.2003 09:05:47

Product : 802.11b P3 Wireless LAN PCMCIA Card
 Test Item : Power Density
 Test Site : No.1 OATS
 Test Mode : Channel 6

Channel No.	Frequency (MHz)	Measurement Level (dBm)	Required Limit (dBm)	Result
6 (11Mbps)	2436.154	-16.89	< 8dBm	Pass

Figure Channel 6:

11Mbps

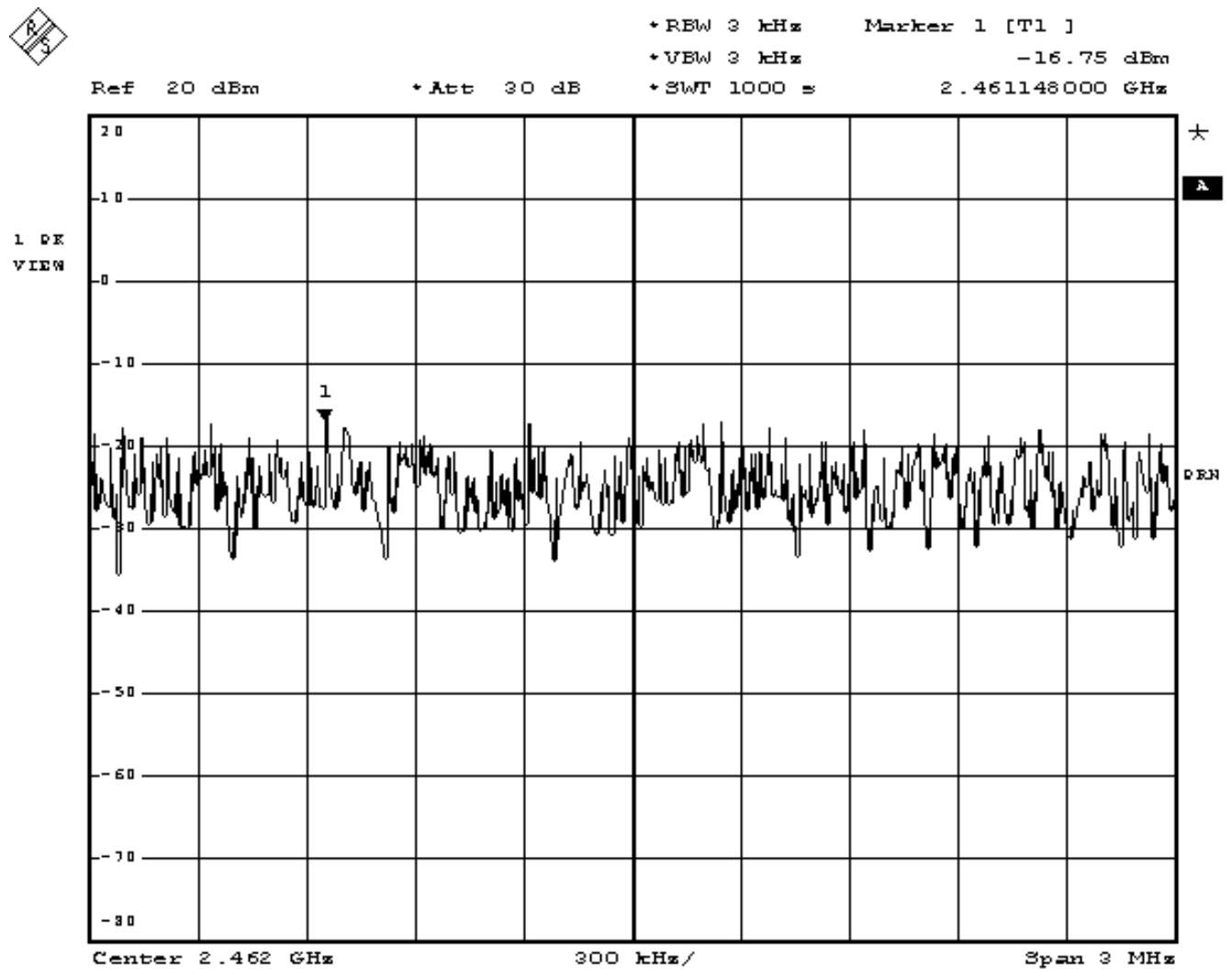


Date: 11.FEB.2003 09:28:07

Product : 802.11b P3 Wireless LAN PCMCIA Card
 Test Item : Power Density
 Test Site : No.1 OATS
 Test Mode : Channel 11

Channel No.	Frequency (MHz)	Measurement Level (dBm)	Required Limit (dBm)	Result
11 (11Mbps)	2461.148	-16.75	< 8dBm	Pass

Figure Channel 11: 11Mbps



Date: 11.FEB.2003 09:46:41

8. EMI Reduction Method During Compliance Testing

No modification was made during testing.

Attachment 1: EUT Test Photographs

Attachment 1: EUT Test Setup Photographs

Front View of Conducted Test



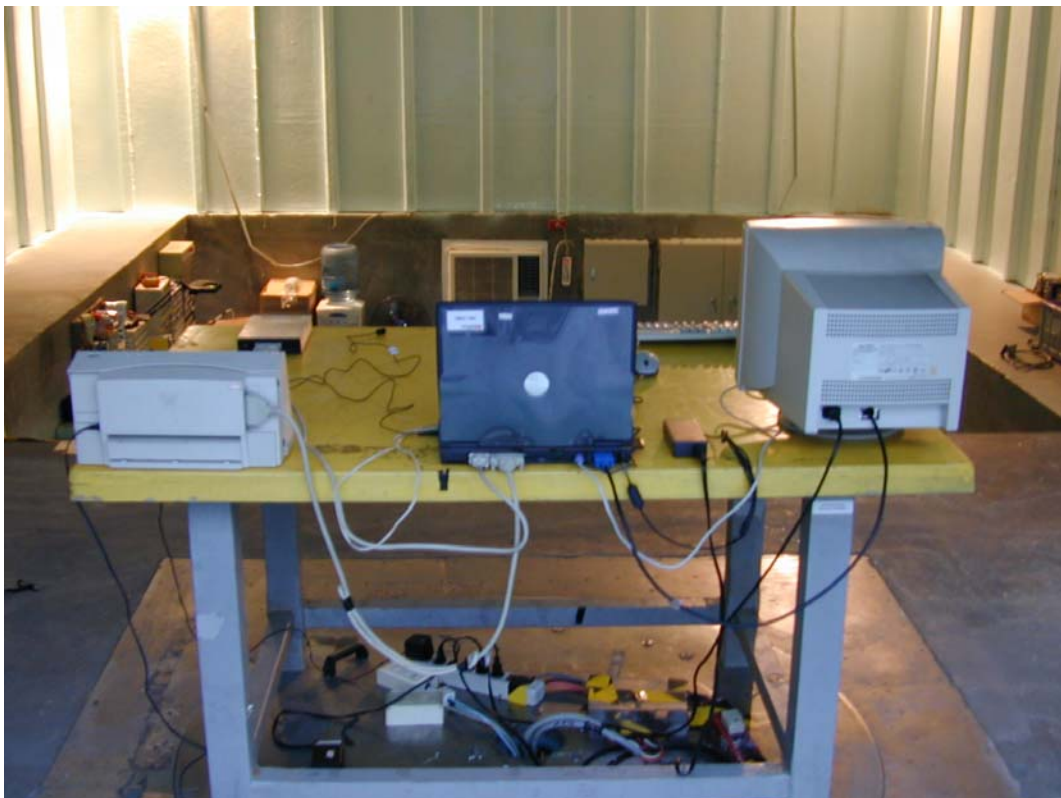
Back View of Conducted Test



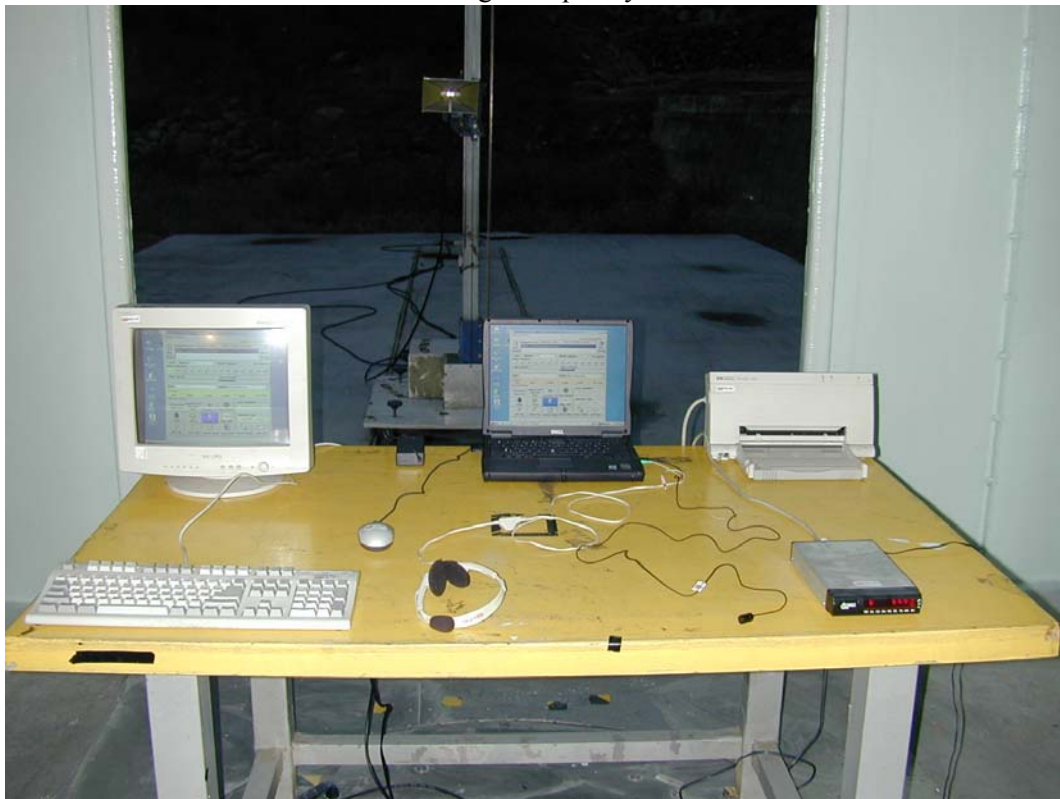
Front View of Radiated Test



Back View of Radiated Test



Front View of High Frequency Radiated Test



Back View of High Frequency Radiated Test



Attachment 2: EUT Detailed Photographs

Attachment 2 : EUT Detailed Photographs

(1) EUT Photo



(2) EUT Photo



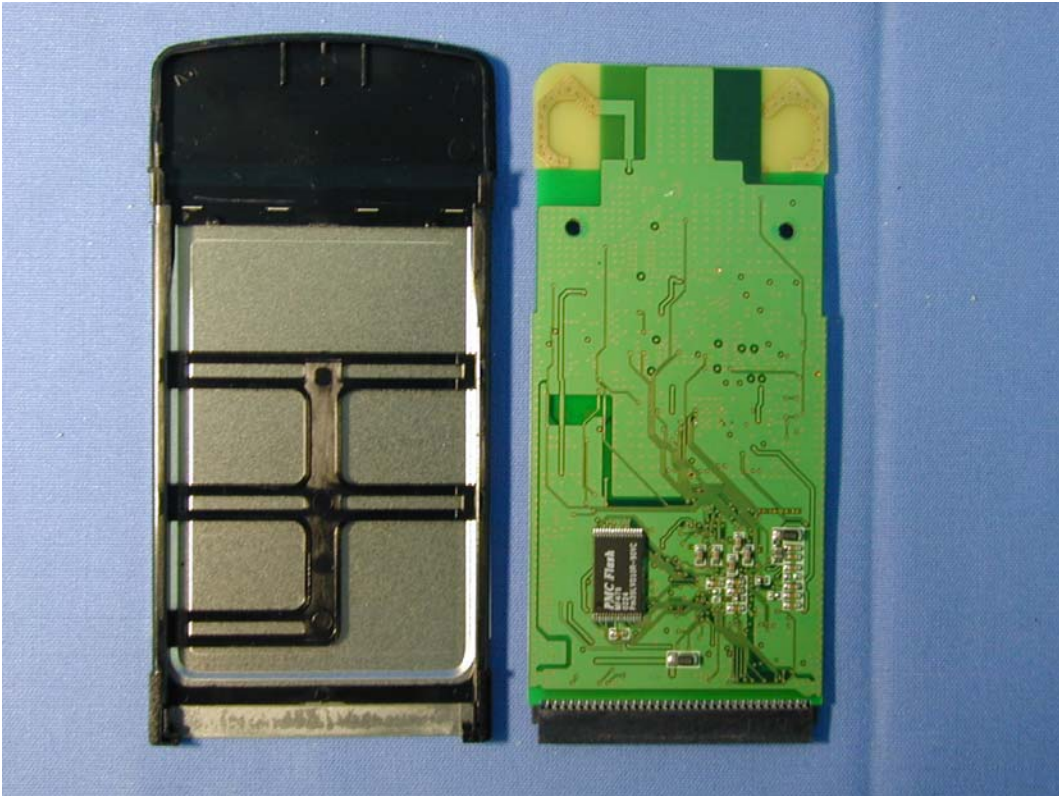
(3) EUT Photo



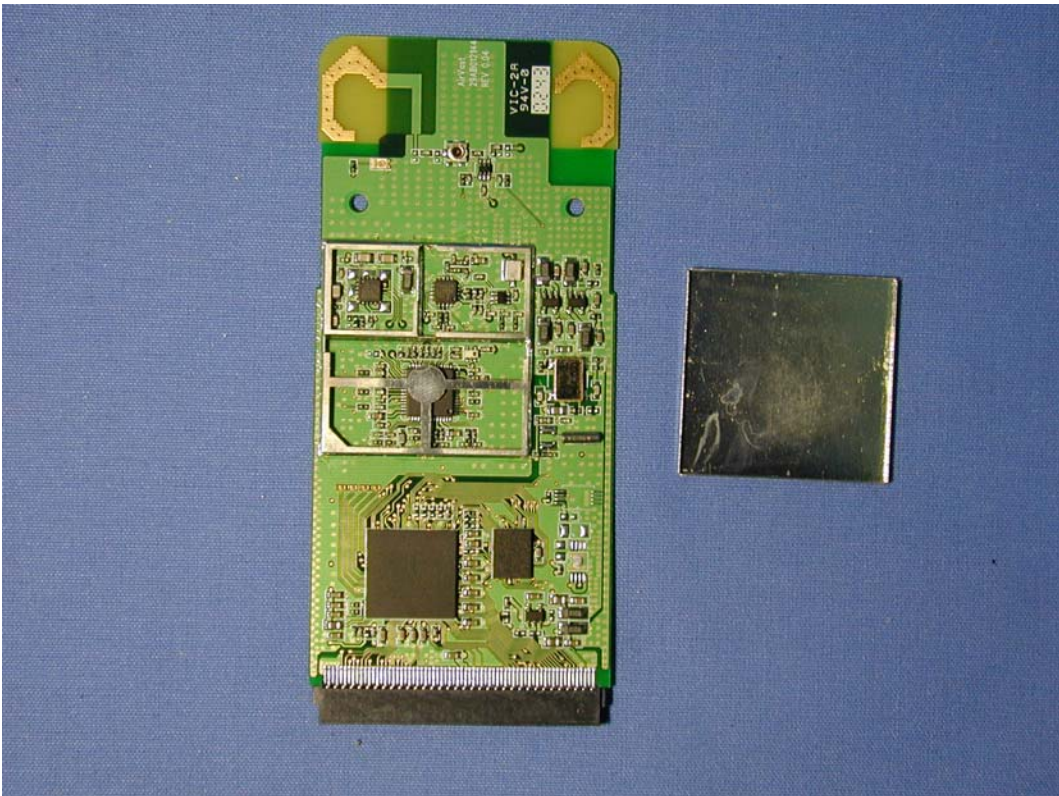
(4) EUT Photo



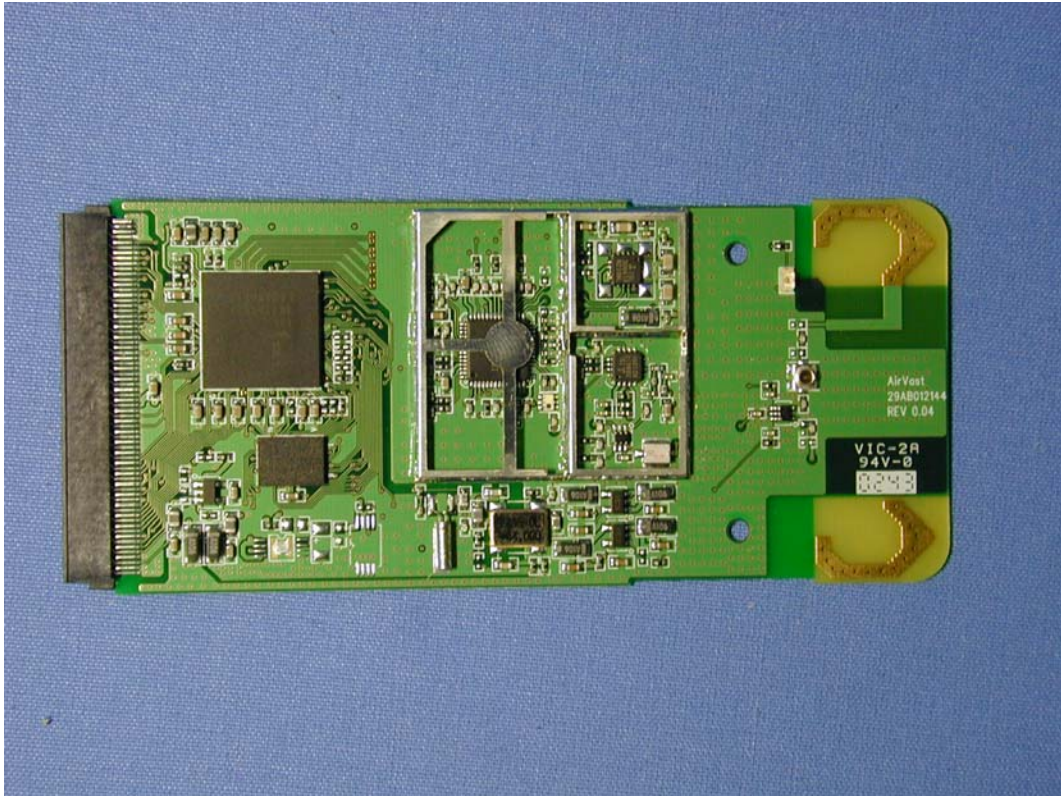
(5) EUT Photo



(6) EUT Photo



(7) EUT Photo



(8) EUT Photo

