

Exhibit 8:
OVFKWC-KE423 Internal Photos (Blade) Family

PRODUCT DESCRIPTION	2
MECHANICAL HOUSING - OVFKWC-KE423 (BLADE) FAMILY	3
INSIDE FRONT AND REAR HOUSING	3
INSIDE FRONT HOUSING	4
KEYPAD	5
PCB SIDE 1 - OVFKWC-KE423 (BLADE) FAMILY	6
PCB SIDE 1	6
PCB SIDE 1 (WITH SHIELD CANS)	7
PCB SIDE 1 (SHIELD CANS REMOVED)	8
PCB SIDE 2 -OVFKWC-KE423 (BLADE) FAMILY	9
PCB SIDE 2 (WITH SHIELD CANS)	9
PCB SIDE 2 (WITH SHIELD CANS REMOVED)	10

Product Description

The phones OVFKWC-KE423 are PCS 1XRTT products. Models have integrated Assisted GPS software feature enabled to meet the emergency location requirements of the FCC's E911 Phase II mandate. The PCS architecture is defined as 1900MHz (PCS CDMA).

All models included in the OVFKWC-KE423 filing use the same antenna and have identical PCB layouts in regards to the RF Circuitry, Basic Frequency Determining and Stabilization Circuitry, Basic Modulator Circuit, Transmitter Active Devices, and Tuning Targets. The only differences between models are the choice of color or greyscale LCD, and the software applications supported (GPS, Brew, WAP, etc.). See product matrix in Figure 1 below.

The phone is designed in compliance with the technical specifications for compatibility of mobile and base stations in the Cellular Radio telephone service contained in "Cellular System Mobile Station -Land Station Compatibility Specification" as specified in OET Bulletin 53 and TIA Standards


The phone will support certain CDMA2000 radio-configurations (RC) as describes in Exhibit 1 (operation description).

		Blade	
		KWC PCS/ Greyscale	KE423
		KWC PCS/ Color/ Brew	KX423

Figure 1 OVFKWC-KE423 Product Matrix

Mechanical Housing - OVFKWC-KE423 (Blade) Family


	
<p>Gray LCD Variant</p>	<p>Color LCD Variant</p>
<p><i>Inside Front and Rear Housing</i> OVFKWC-KE423 (Blade) Family</p>	

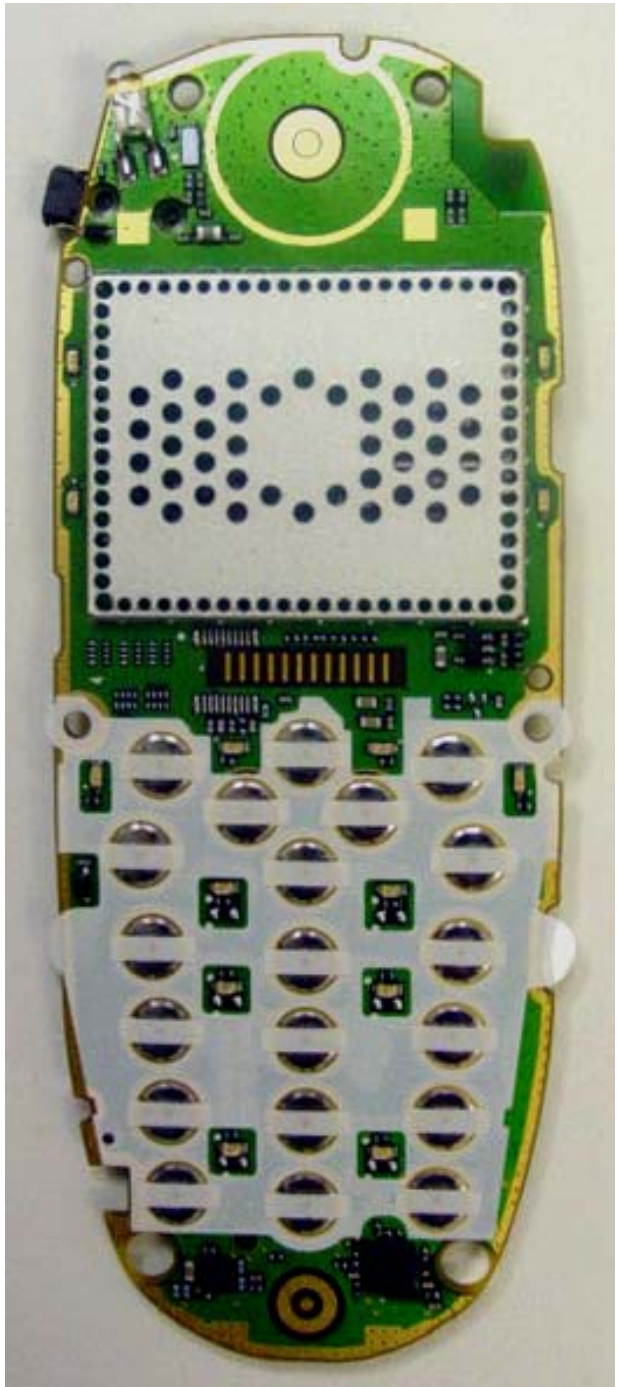
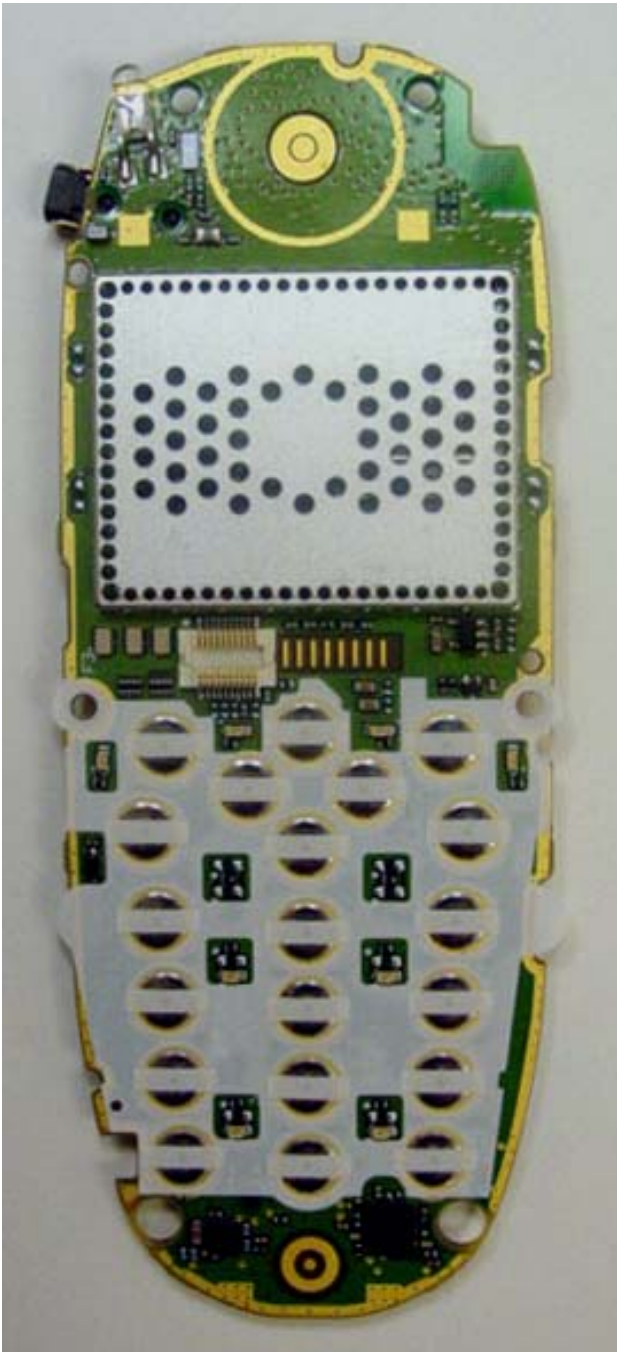
 A photograph showing the internal components of a Gray LCD Variant mobile phone. On the left is a small, square LCD screen with a white display area and a black bezel. To its right is a larger, rectangular LCD screen with a white display area and a black bezel. Below these screens is a keypad assembly with a grid of buttons. At the bottom is a circular camera lens. The components are laid out on a light-colored surface.	 A photograph showing the internal components of a Color LCD Variant mobile phone. On the left is a small, square LCD screen with a white display area and a black bezel. To its right is a larger, rectangular LCD screen with a white display area and a black bezel. Below these screens is a keypad assembly with a grid of buttons. At the bottom is a circular camera lens. The components are laid out on a light-colored surface.
<p>Gray LCD Variant</p>	<p>Color LCD Variant</p>
<p><i>Inside Front Housing</i> OVFKWC-KE423 (Blade) Family</p>	

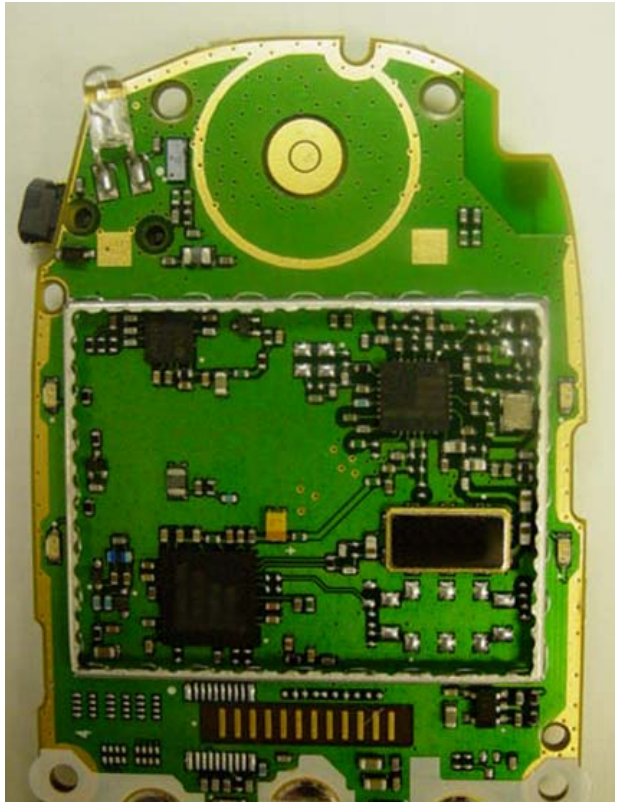
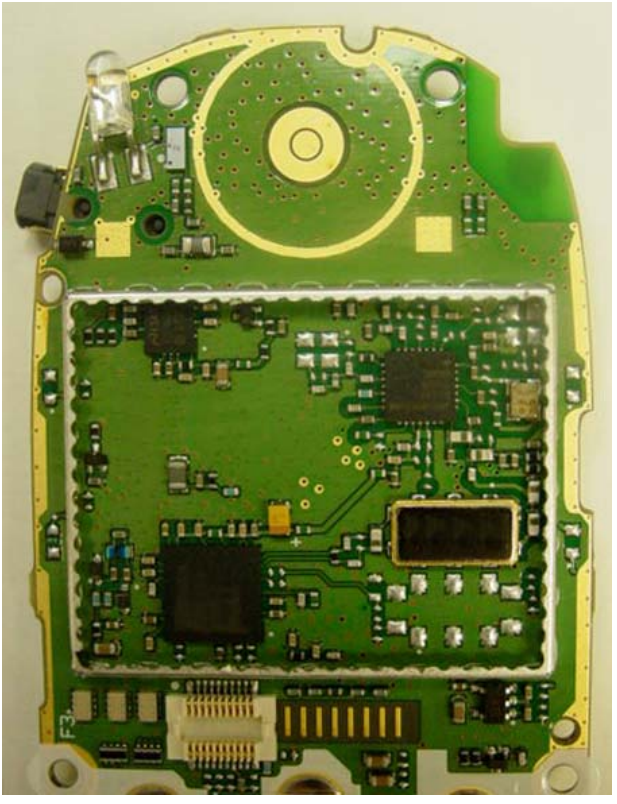


Keypad
OVFKWC-KE423 (Blade) Family

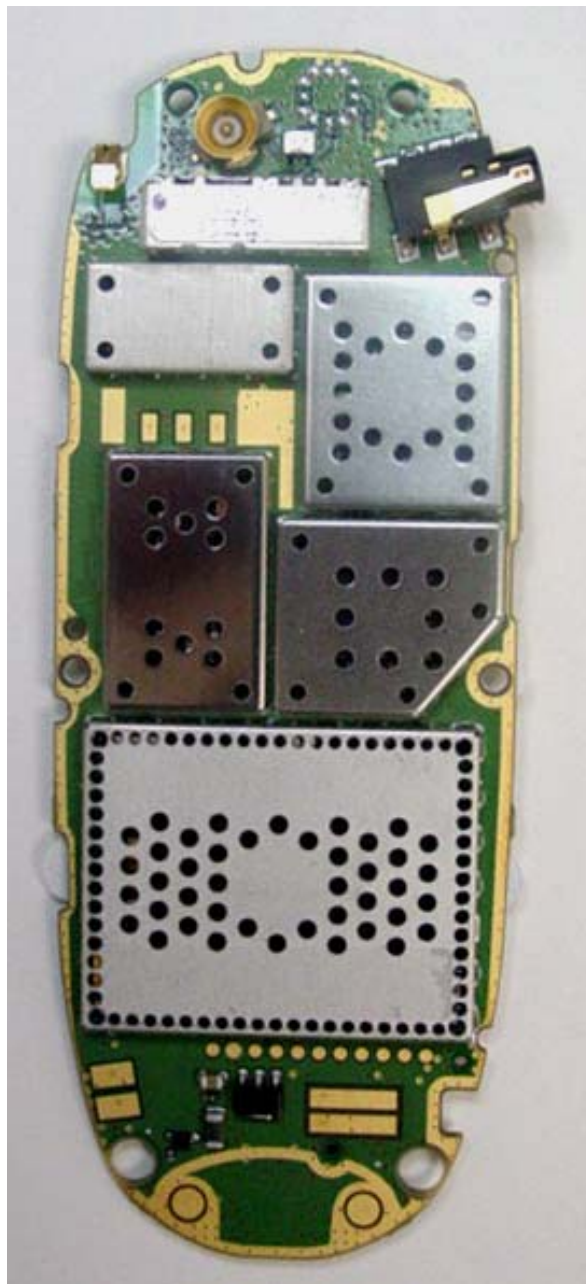
PCB Side 1 - OVFKWC-KE423 (Blade) Family

	
<p>Gray LCD Variant</p>	<p>Color LCD Variant</p>
<p><i>PCB Side 1</i> OVFKWC-KE423 (Blade) Family</p>	

	
Gray LCD Variant	Color LCD Variant
<p><i>PCB Side 1 (with Shield Cans)</i> OVFKWC-KE423 (Blade) Family</p>	

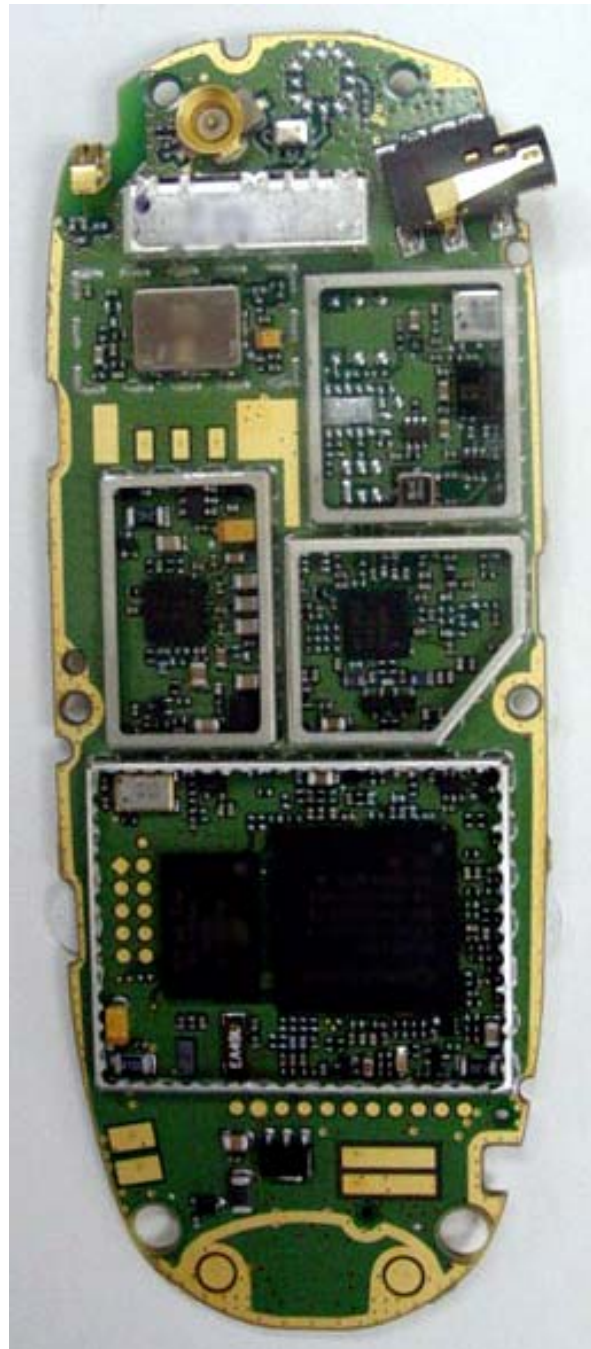
	
Gray LCD Variant	Color LCD Variant
<p><i>PCB Side 1 (Shield Cans Removed)</i> OVFKWC-KE423 (Blade) Family</p>	

PCB Side 2 –OVFKWC-KE423 (Blade) Family



PCB Side 2 is the same for both gray and color LCD model variants

PCB Side 2 (with Shield Cans)
OVFKWC-KE423 (Blade) Family



PCB Side 2 is the same for both gray and color LCD model variants

PCB Side 2 (with Shield Cans removed)
OVFKWC-KE423 (Blade) Family