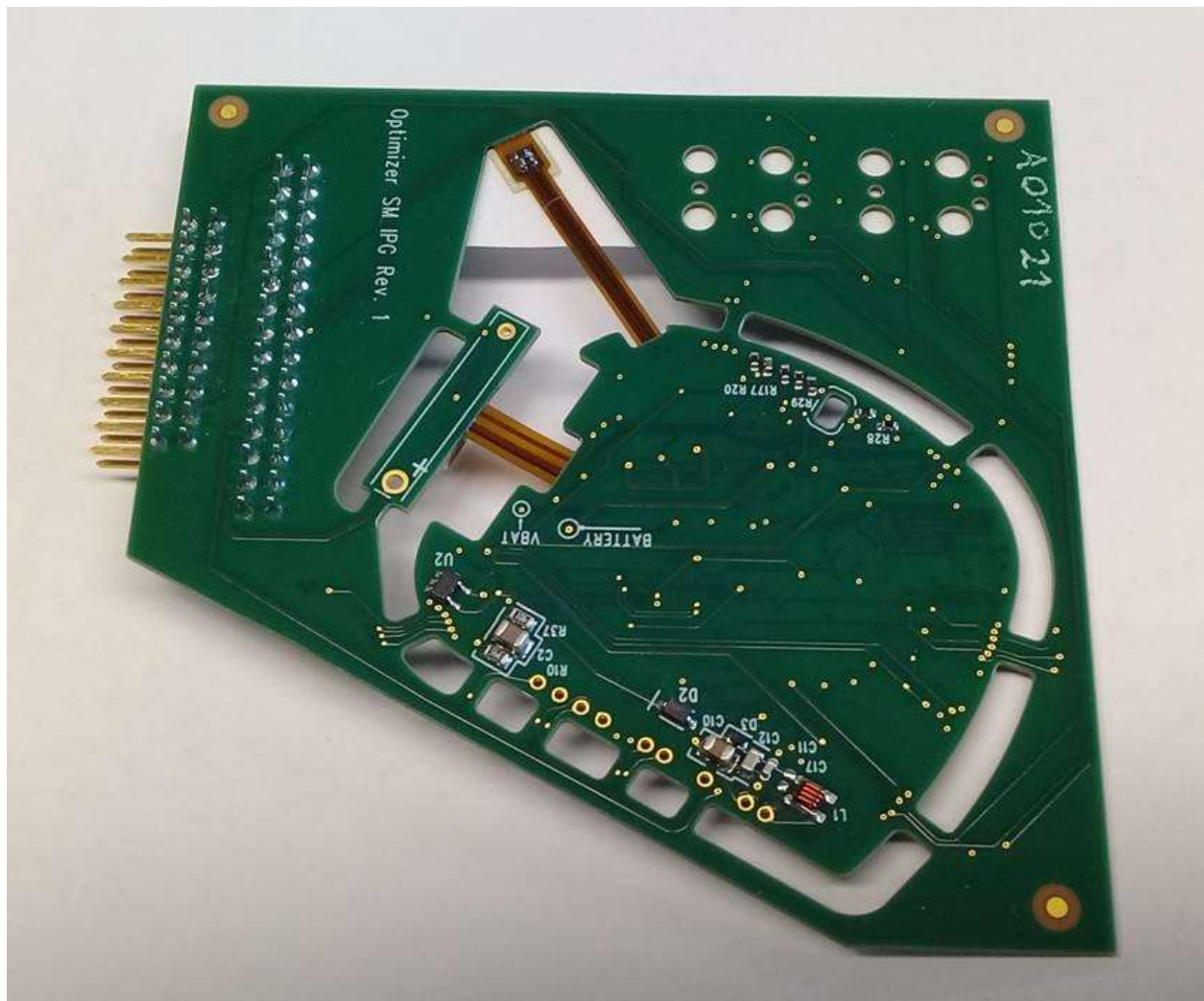
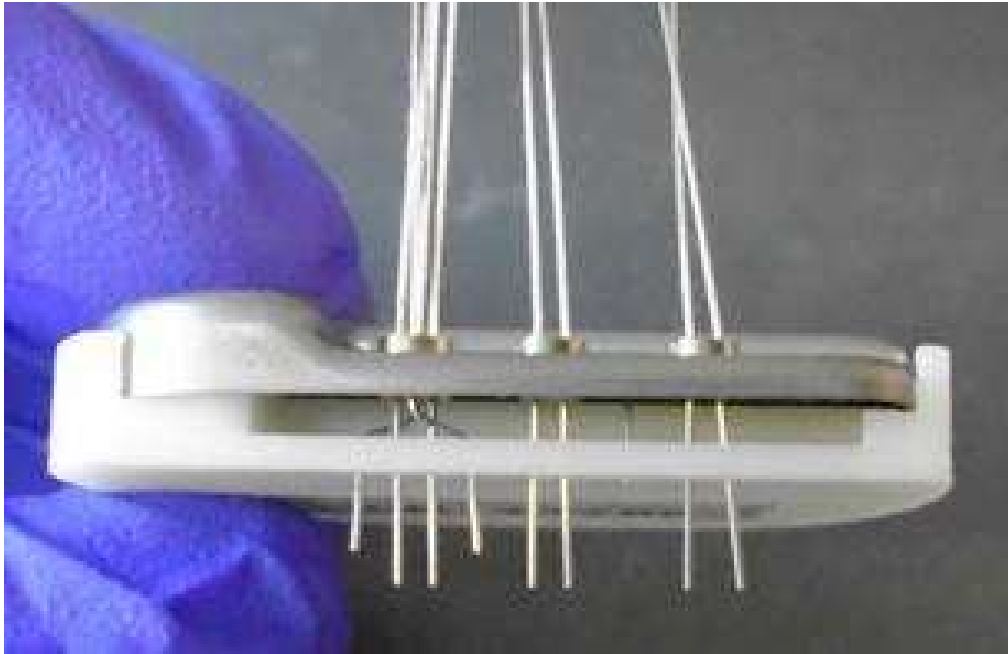




Internal Picture 1: PCB layout of the Optimizer Smart Mini in cannister during production, prior to header attachment



Internal Picture 2: PCB layout of the back side of Optimizer Smart Mini prior to tab release and placement into cannister.



Internal Picture 3: Feedthrough lines connecting epoxy header with antenna and standard lead connections to Smart Mini PCB and cannister.