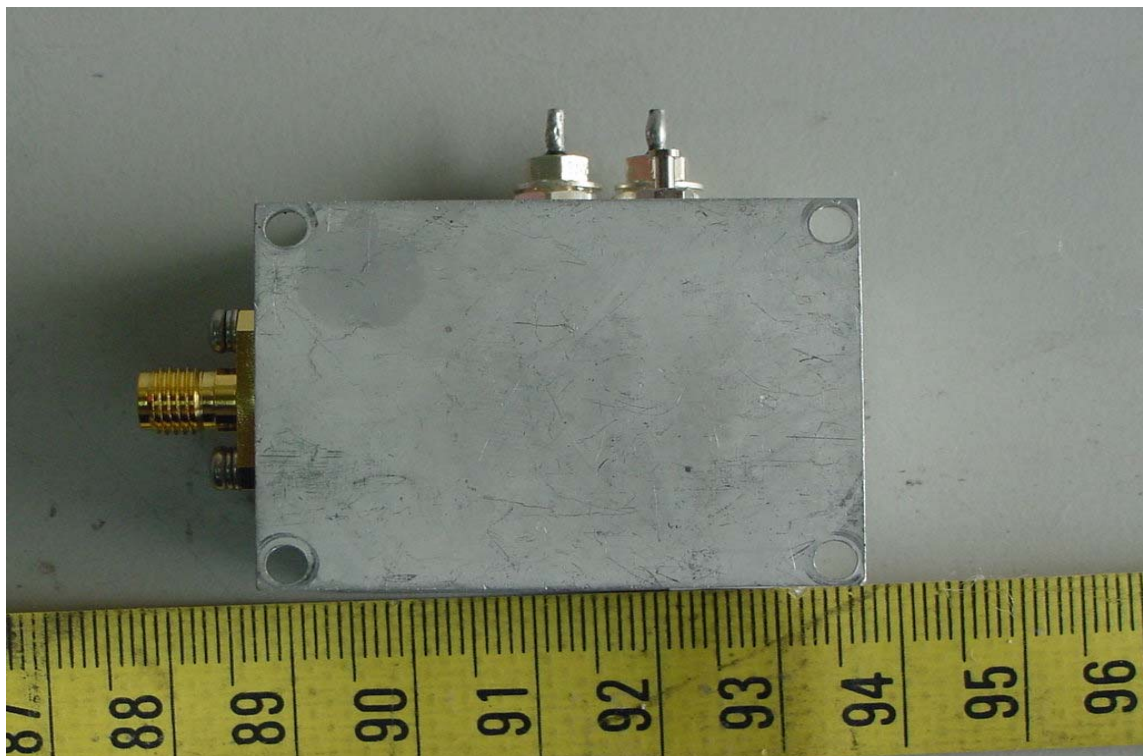


## CONSTRUCTED PHOTOS of EUT

Top View of Conver

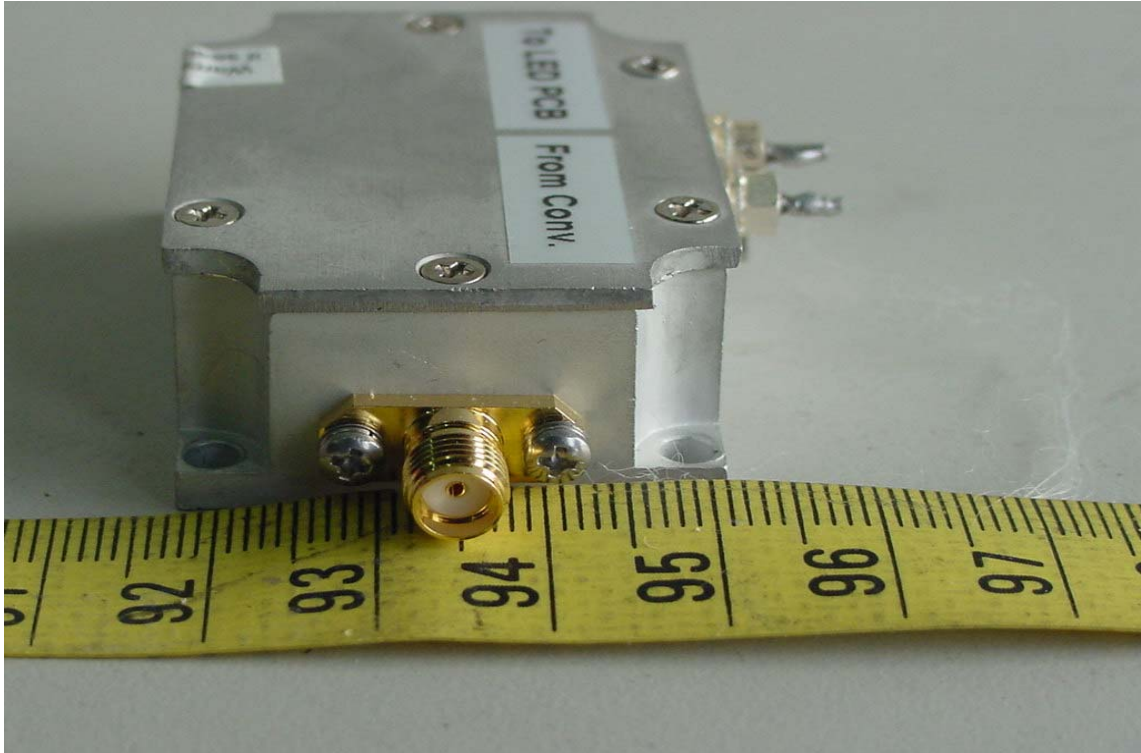


Bottom View of Conver

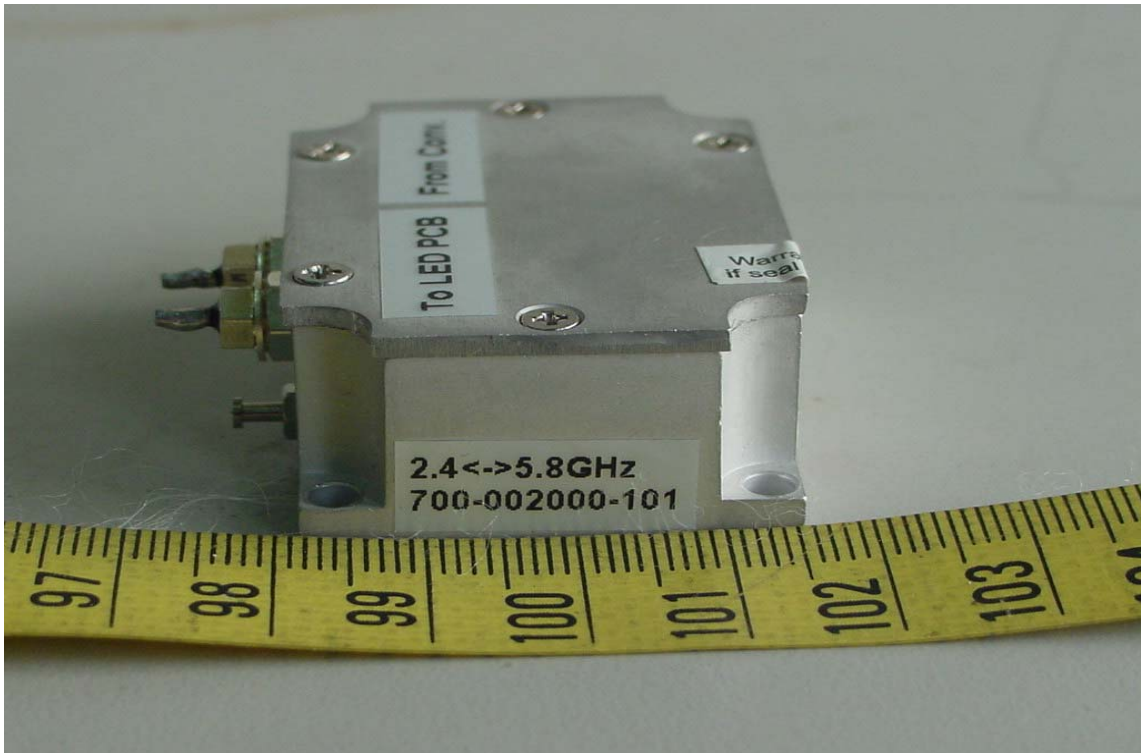


## CONSTRUCTED PHOTOS of EUT

Side View of RX detector

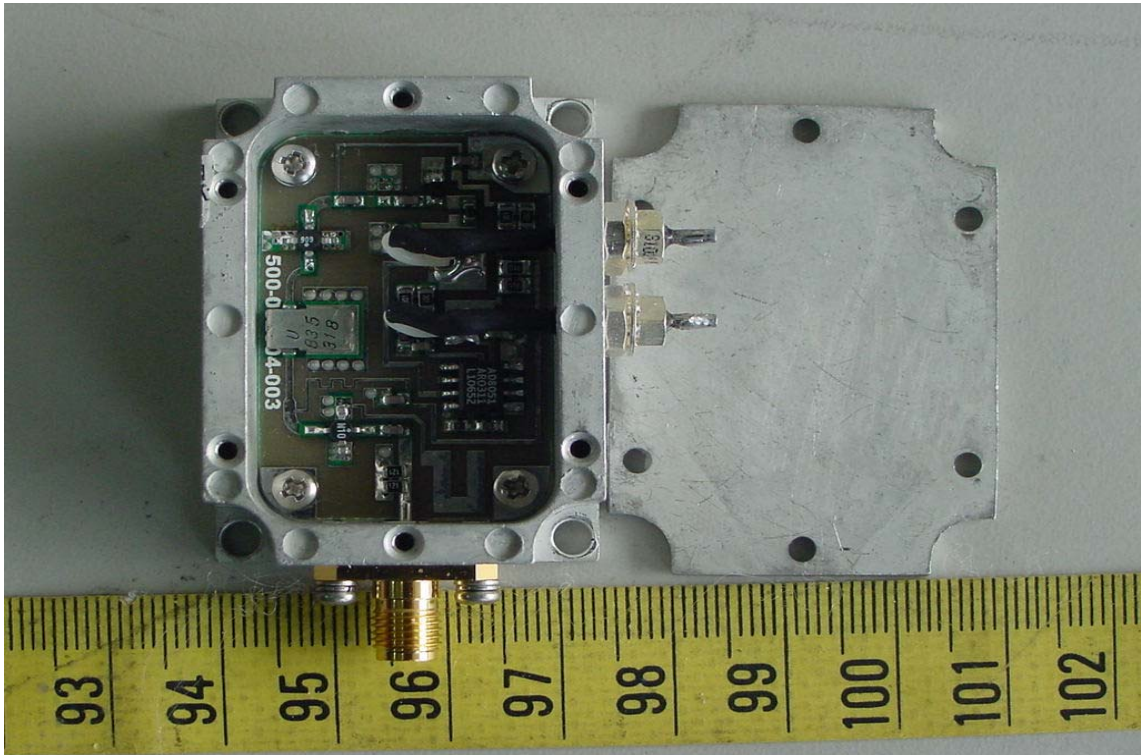


Side View of RX detector



## CONSTRUCTED PHOTOS of EUT

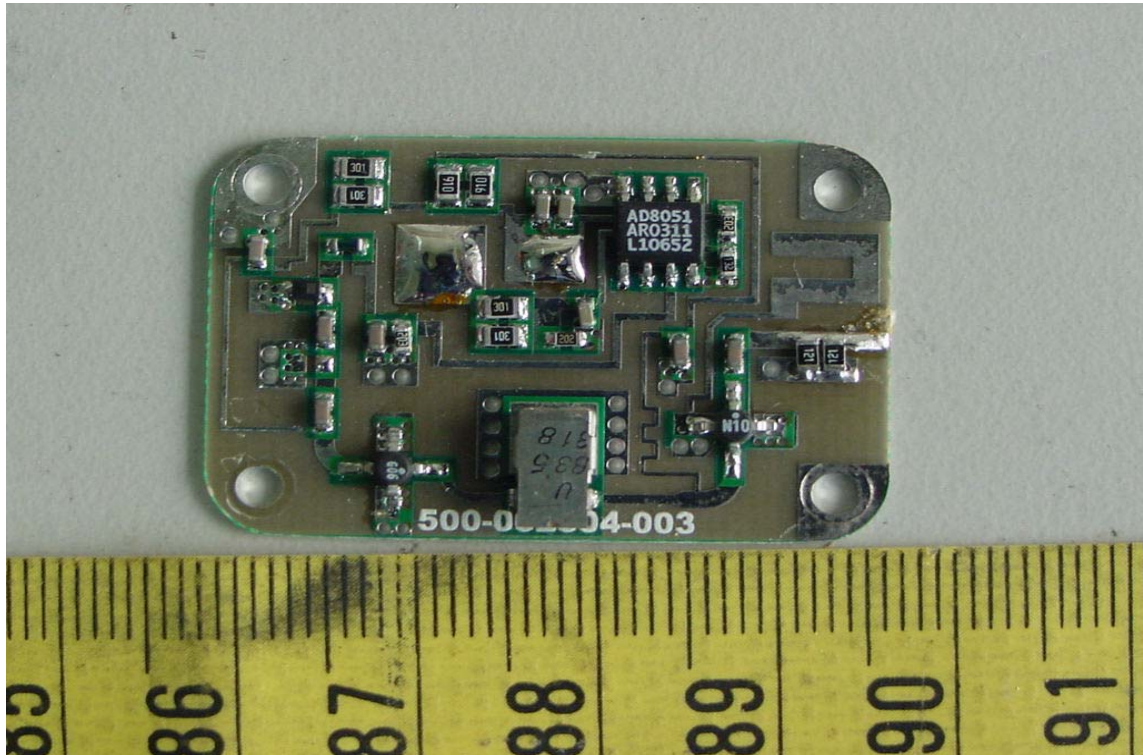
Internal View of RX detector



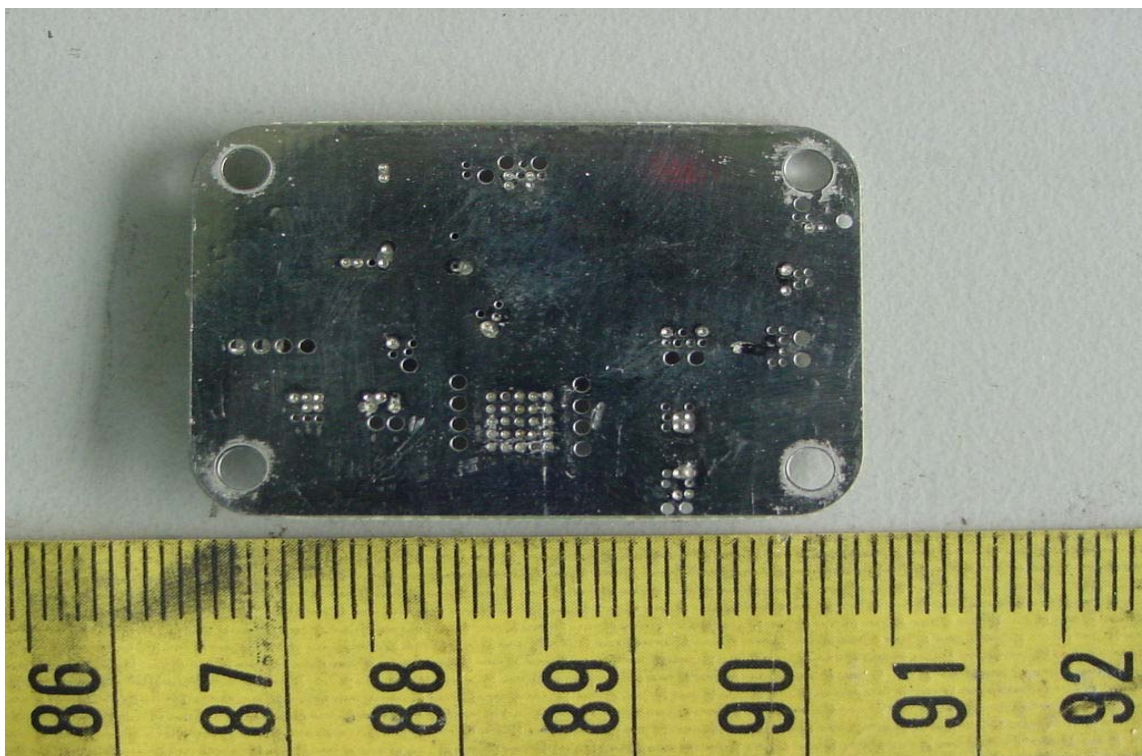


## CONSTRUCTED PHOTOS of EUT

Component View of RX detector's PCB



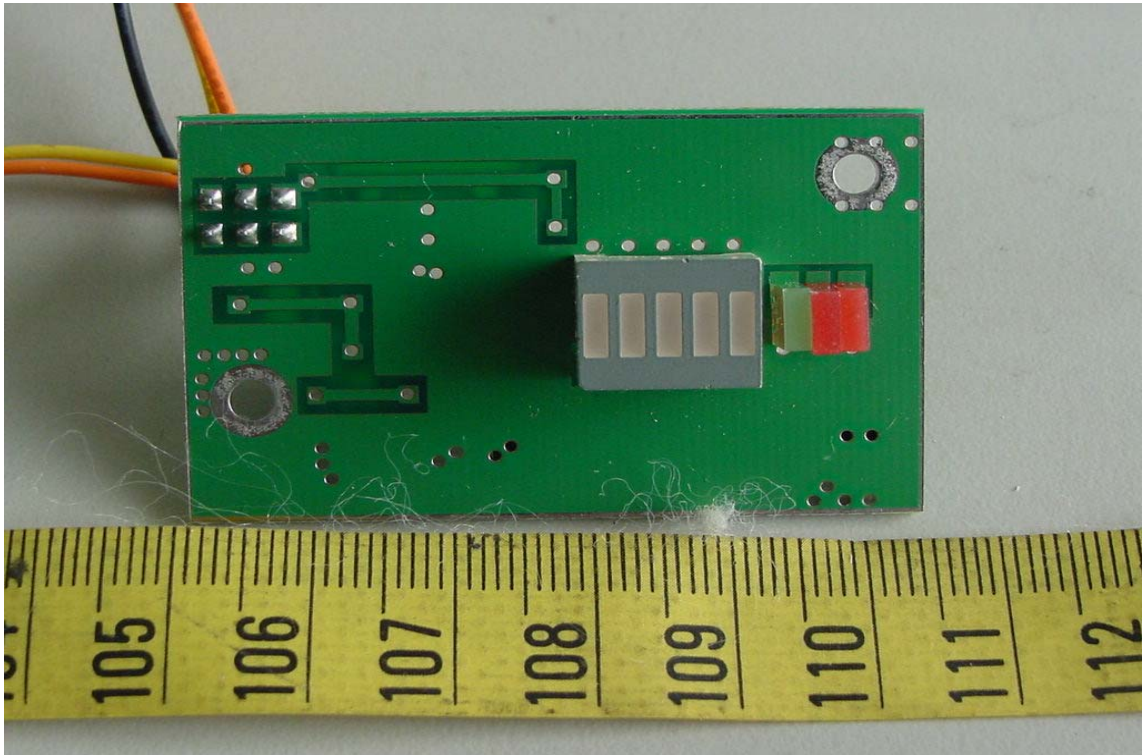
Solder View of RX detector's PCB



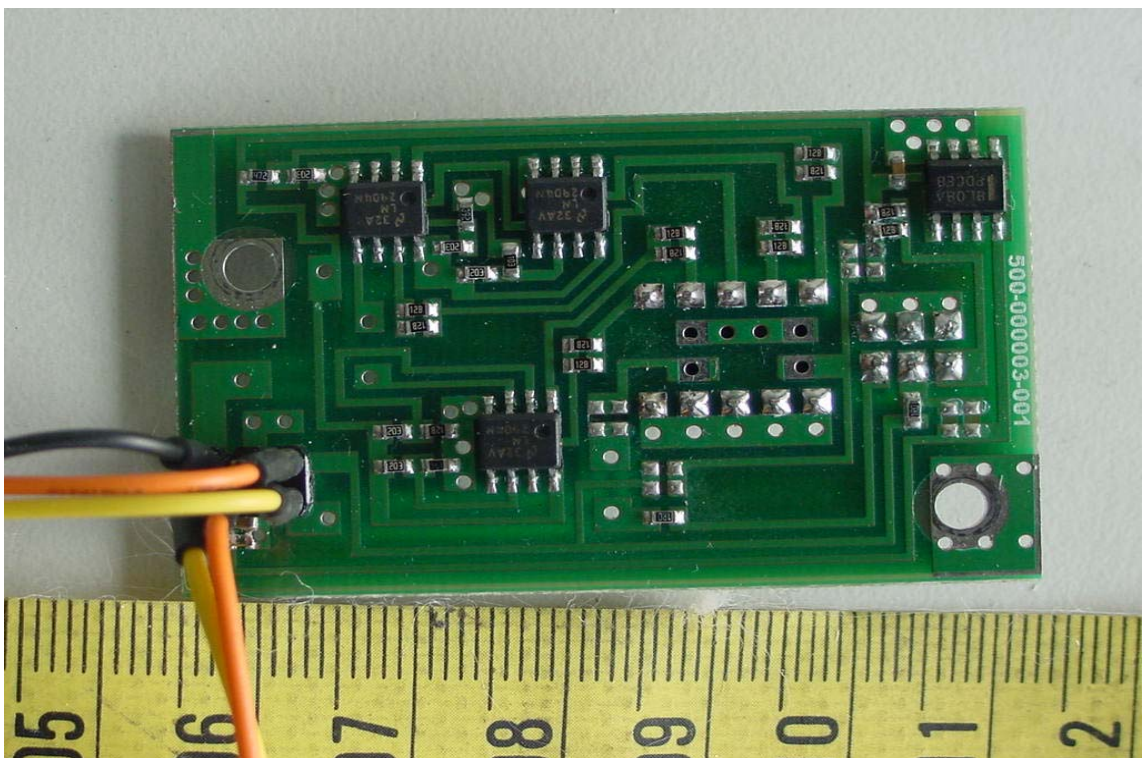


## CONSTRUCTED PHOTOS of EUT

Component View of LED PCB

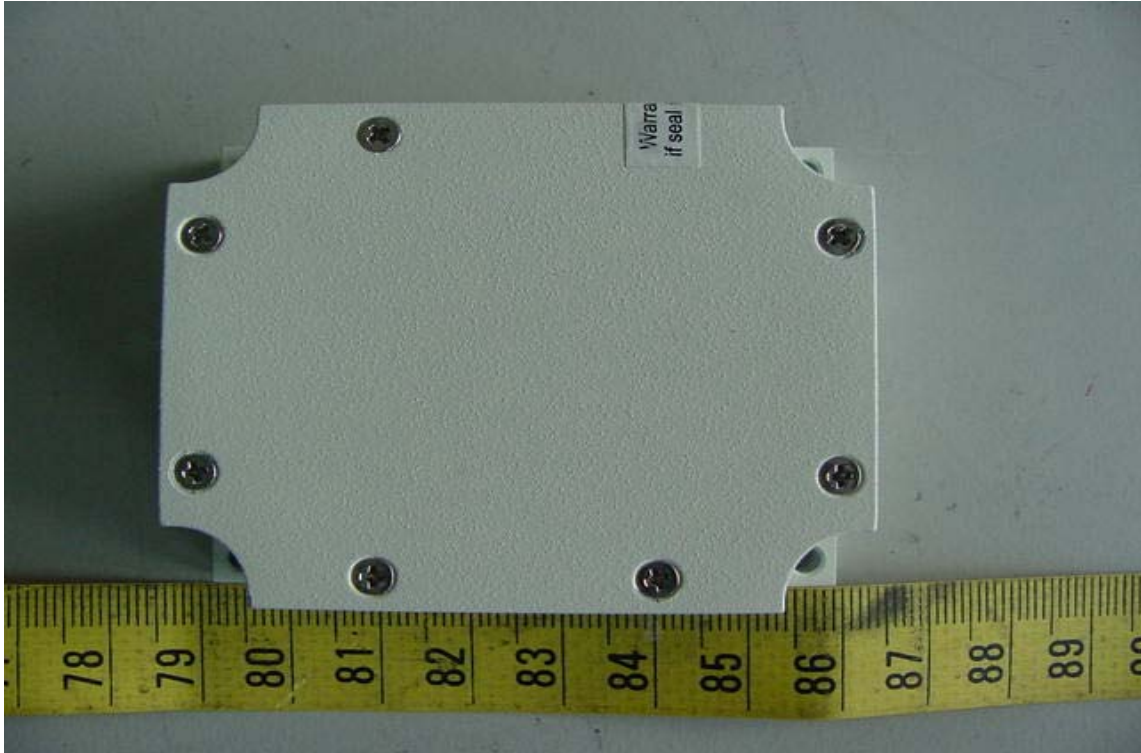


Solder View of LED PCB

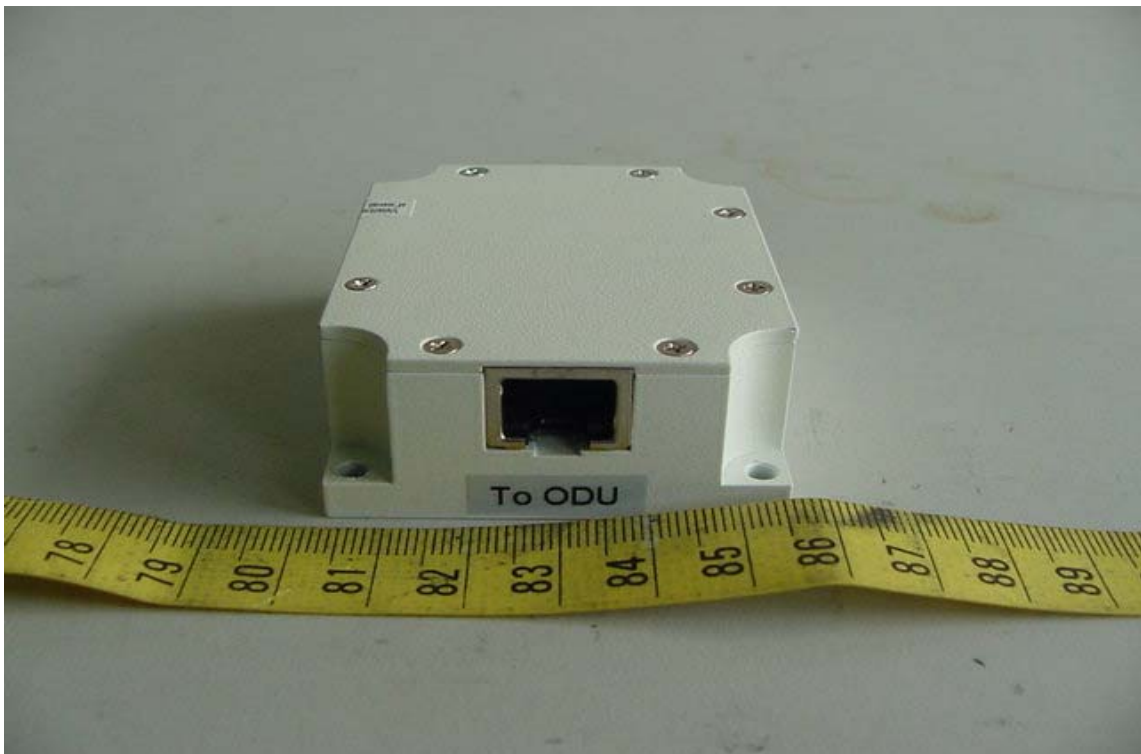


## CONSTRUCTED PHOTOS of EUT

TOP View of DC Adaptor



Side View of DC Adaptor





## CONSTRUCTED PHOTOS of EUT

Side View of DC Adaptor

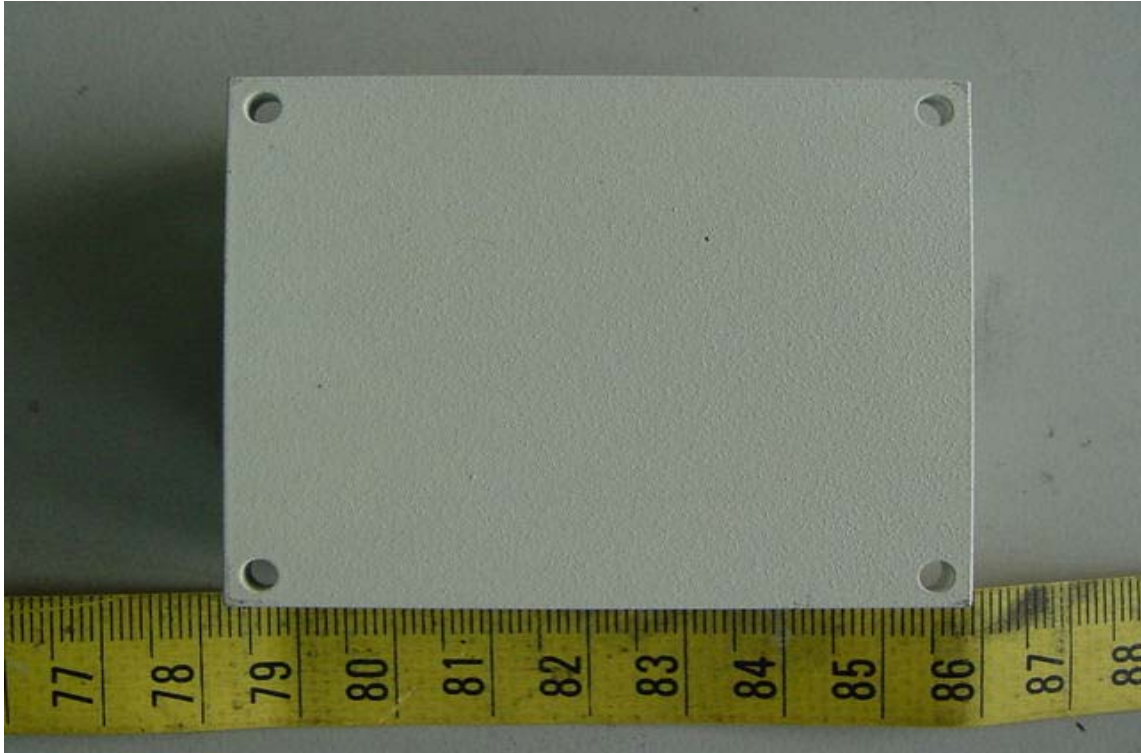


Side View of DC Adaptor



## CONSTRUCTED PHOTOS of EUT

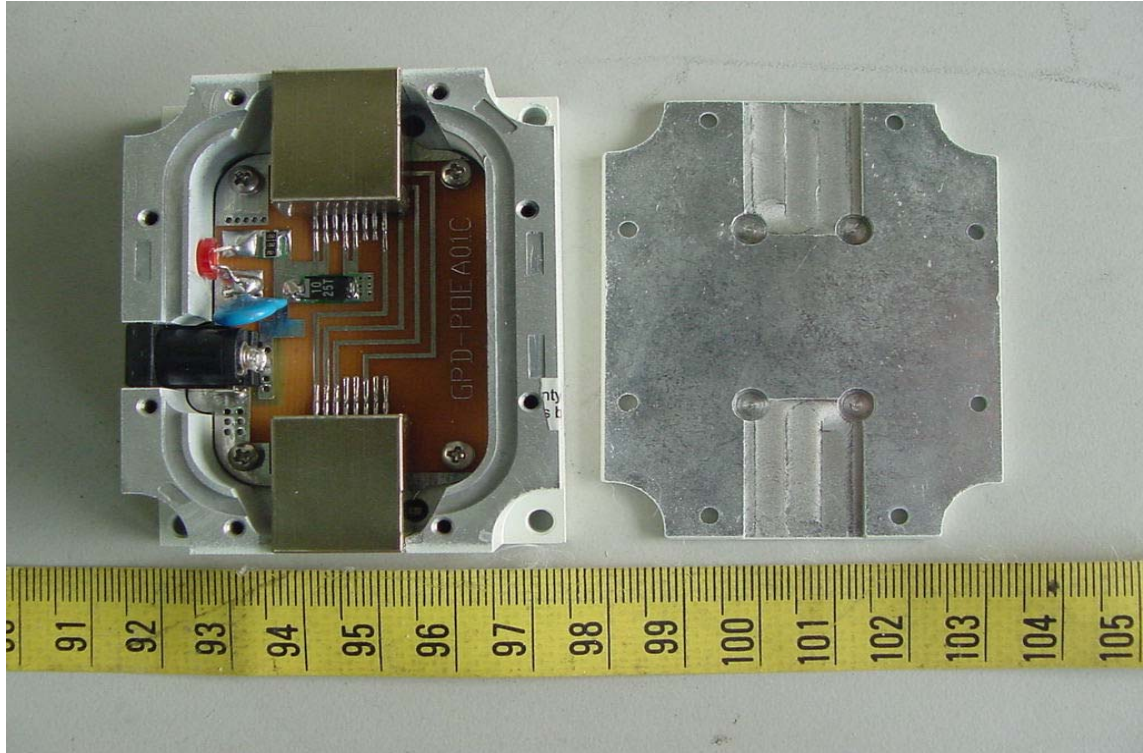
Bottom View of DC Adaptor





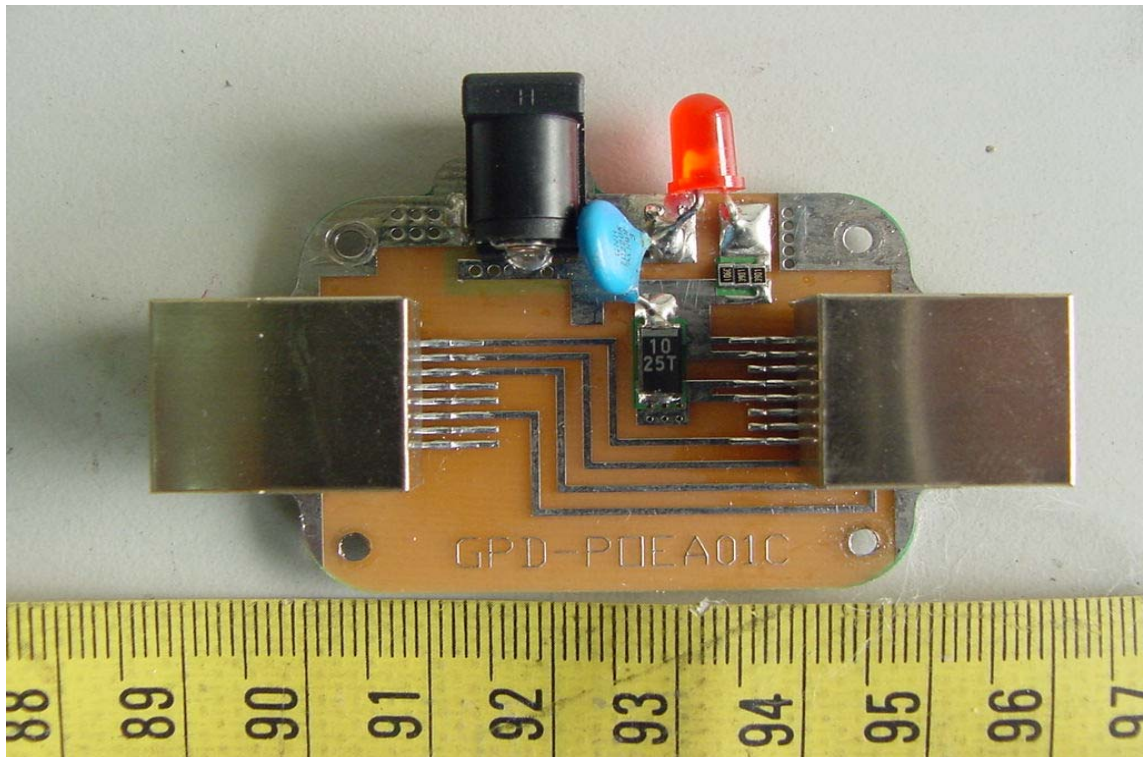
## CONSTRUCTED PHOTOS of EUT

Internal View of DC Adaptor

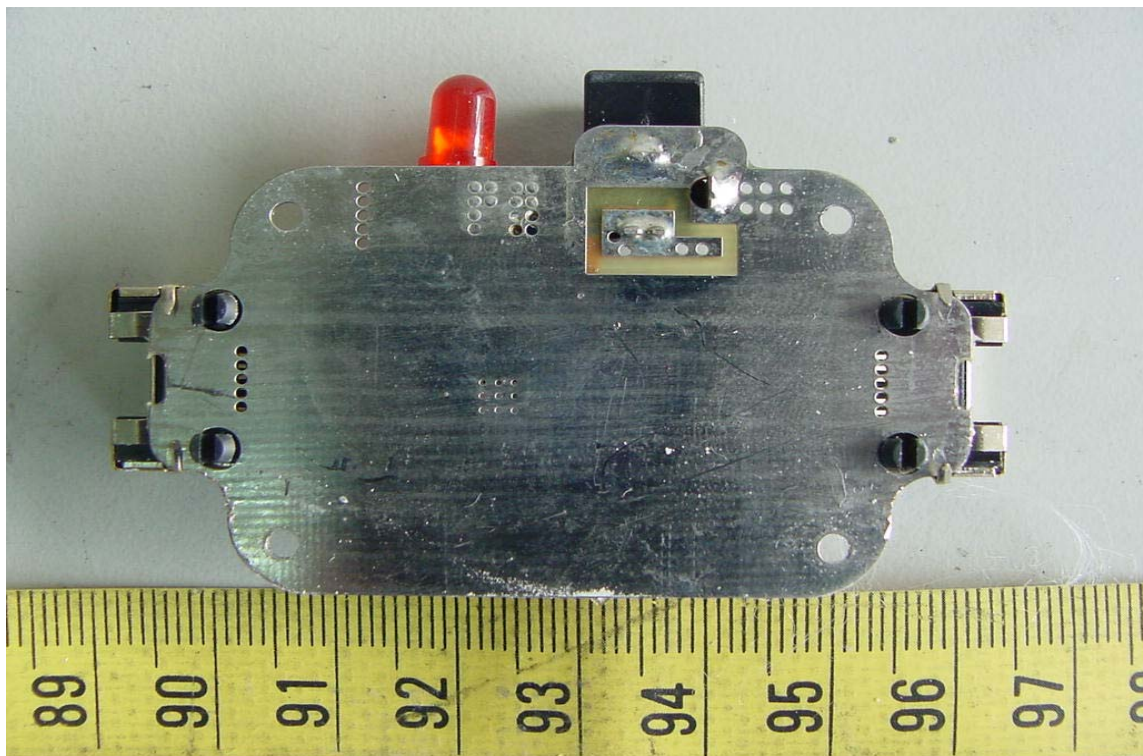


## CONSTRUCTED PHOTOS of EUT

Component View of DC Adaptor's PCB



Solder View of DC Adaptor's PCB





## CONSTRUCTED PHOTOS of EUT

Front View of Grid Antenna



Rear View of Grid Antenna

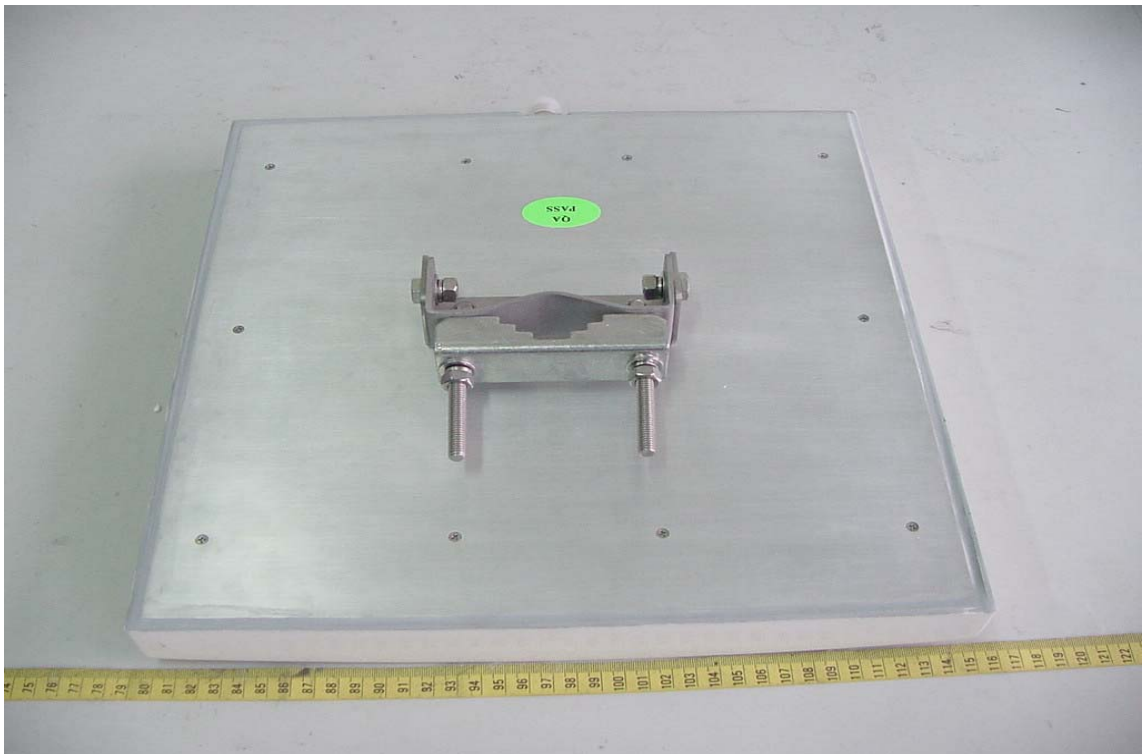


## CONSTRUCTED PHOTOS of EUT

Front View of Flat Plane Antenna



Rear View of Flat Plane Antenna





## CONSTRUCTED PHOTOS of EUT

### Front View of Adaptor



### Rear View of Adaptor



## CONSTRUCTED PHOTOS of EUT

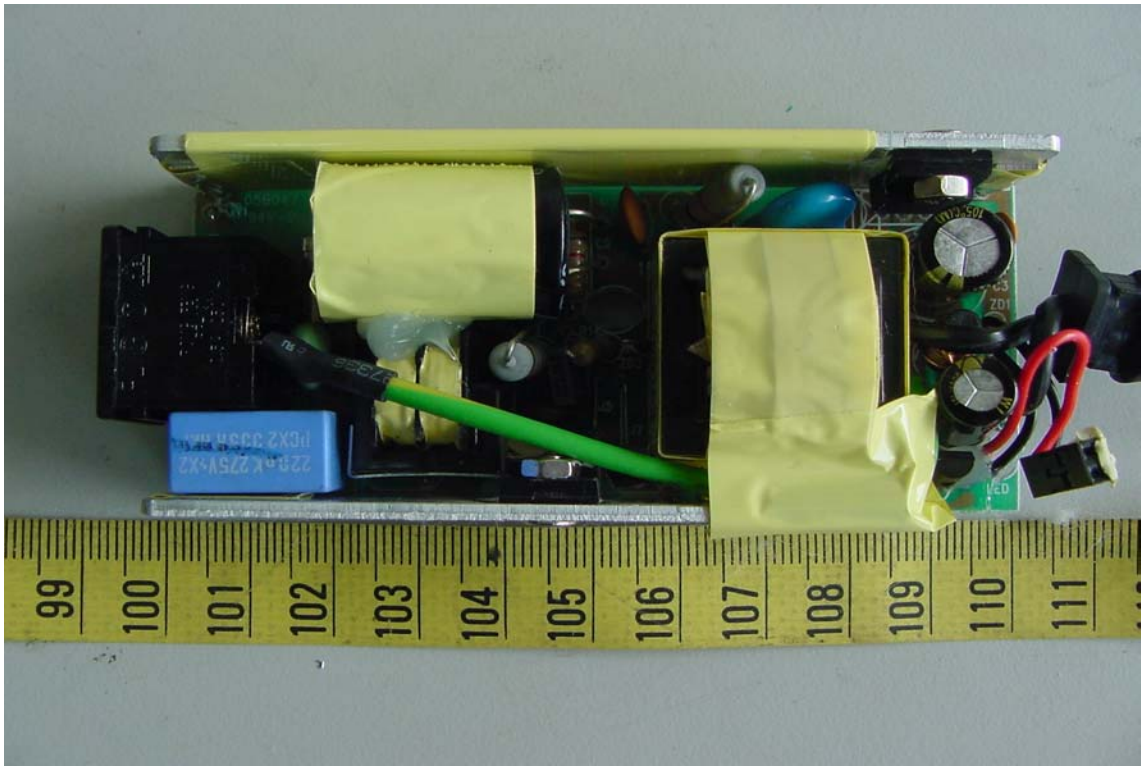
Internal View of Adaptor





## CONSTRUCTED PHOTOS of EUT

Component View of Adaptor's PCB



Solder View of Adaptor's PCB

