

Figure 2-32 Simulated (Left) and measured (Right) PD distribution for the following configuration: Band n261, MID Channel, Beam ID 141, AG1 polarization, Module1, plotted on surface S4 (right) with 10mm separation distance to the DUT.

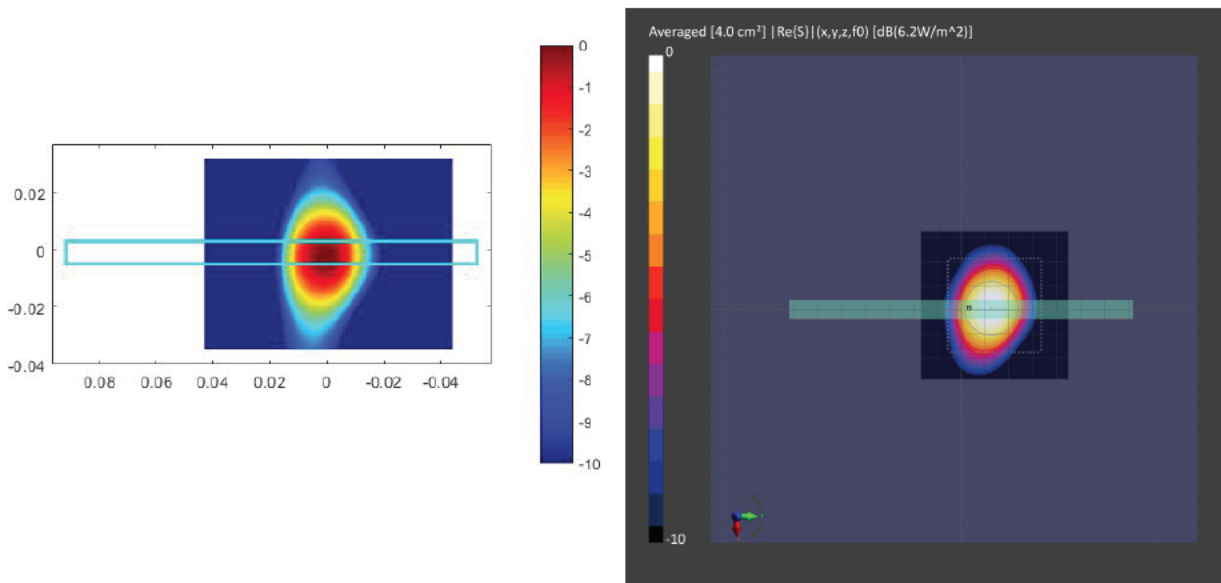


Figure 2-33 Simulated (Left) and measured (Right) averaged PD distribution for the following configuration: Band n261, MID Channel, Beam ID 141, AG1 polarization, Module1, plotted on surface S4 (right) with 10mm separation distance to the DUT.

2.2 Calculated PD per beam ID

The simulated time-average PD calculated for the selected evaluation planes for all beams in the codebook are presented in this section. The calculations are done for the LOW, MID, and HIGH channels of n260 and n261 frequency bands for both Module0 and Module1. Because the paired beams are not phase coherent, the relative phase difference between the corresponding paired beams with vertical (AG0) and horizontal (AG1) polarizations is swepted from 0° to 360° in 5° steps and the PD_{ave} is calculated for all of these phase difference values in order to capture the largest possible PD_{ave} value. The PD_{ave} values for every beam ID are reported in Tables 2-2 to Table 2-7 for n260 and Tables 2-8 to Table 2-13 for n261. For the beam IDs with paired beam configuration, the largest possible PD_{ave} values calculated using this relative phase difference sweeping method are reported.

Table 2-2 Simulated averaged PD over 4 [cm²] area at n260 - Low Channel - Module0.

n260 - LOW CH					Averaged PD over 4 [cm ²] area in [w/m ²]					(PD exposure surface) / (PD worst surface)		
Beam ID		Type	Pin	No. of feeds	Module0					Module0 (Ratio)		
AG0	AG1				(2mm)	(10mm)	(10mm)	(10mm)	(10mm)	(10mm)	(10mm)	(10mm)
					S1	S1	S2	S3	S5	S1/(worst S)	S2/(worst S)	S3/(worst S)
1		Patch	6 [dBm]	1	2.91	1.00	0.43	0.01	2.35	0.34	0.15	0.00
	129			1	2.53	0.90	0.43	0.01	2.27	0.35	0.17	0.00
1	129			2	6.69	2.71	1.08	0.29	5.08	0.40	0.16	0.04
6				2	3.60	1.57	1.60	0.01	4.56	0.35	0.35	0.00
	134			2	4.23	1.90	1.51	0.01	4.77	0.40	0.32	0.00
6	134			4	9.17	3.97	3.74	0.41	10.73	0.37	0.35	0.04
7				2	4.92	2.01	0.66	0.01	3.72	0.41	0.13	0.00
	133			2	3.48	1.06	1.17	0.01	3.41	0.31	0.34	0.00
7	133			4	9.45	3.36	2.22	0.56	7.60	0.36	0.24	0.06
5				2	4.99	1.66	1.19	0.02	3.90	0.33	0.24	0.00
	135			2	3.93	1.26	1.06	0.01	3.64	0.32	0.27	0.00
5	135			4	9.26	3.58	2.13	0.83	8.17	0.39	0.23	0.09
11				2	3.09	1.16	0.98	0.02	3.43	0.34	0.29	0.00
	138			2	3.88	1.56	1.34	0.01	4.16	0.38	0.32	0.00
11	138			4	8.47	3.46	2.93	0.71	9.51	0.36	0.31	0.07
10				2	3.33	1.28	1.56	0.03	4.59	0.28	0.34	0.01
	139			2	4.38	1.74	0.92	0.02	4.45	0.39	0.21	0.01
10	139			4	8.94	3.56	2.91	0.33	9.71	0.37	0.30	0.03
18				4	7.41	3.43	2.77	0.02	8.31	0.41	0.33	0.00
	147			4	7.44	3.33	2.75	0.03	8.82	0.38	0.31	0.00
18	147			8	19.61	9.00	5.99	1.68	19.93	0.45	0.30	0.08
19				4	7.47	3.07	2.82	0.02	8.51	0.36	0.33	0.00
	146			4	6.98	3.26	2.84	0.02	8.27	0.39	0.34	0.00
19	146			8	17.30	7.65	6.42	0.32	17.64	0.43	0.36	0.02
21				4	7.00	2.27	2.41	0.03	6.81	0.32	0.35	0.00
	148			4	7.17	2.91	1.60	0.02	7.39	0.39	0.22	0.00
21	148			8	16.23	6.02	4.47	0.82	16.00	0.37	0.28	0.05
17				4	7.65	2.62	2.20	0.04	6.23	0.34	0.29	0.01
	145			4	6.03	2.02	2.42	0.03	6.94	0.29	0.35	0.00
17	145			8	16.15	5.12	3.63	1.86	13.94	0.32	0.22	0.12
20				4	9.00	3.84	1.77	0.04	8.50	0.43	0.20	0.00
	149			4	6.68	2.31	1.98	0.01	6.84	0.34	0.29	0.00
20	149			8	16.69	5.80	3.83	0.75	15.86	0.35	0.23	0.05
28				4	9.05	4.05	2.23	0.03	8.67	0.45	0.25	0.00
	154			4	5.81	2.43	3.07	0.02	7.87	0.31	0.39	0.00
28	154			8	16.81	7.42	5.79	0.74	18.07	0.41	0.32	0.04
26				4	7.11	2.51	2.60	0.02	7.66	0.33	0.34	0.00
	156			4	7.76	3.53	2.56	0.03	8.90	0.40	0.29	0.00
26	156			8	18.15	7.75	5.38	0.66	19.13	0.40	0.28	0.03
27				4	7.95	3.74	2.52	0.04	8.42	0.44	0.30	0.00
	155			4	7.39	3.47	2.38	0.02	7.93	0.44	0.30	0.00
27	155			8	19.12	9.37	6.03	1.55	17.83	0.49	0.32	0.08
29				4	8.87	3.50	1.47	0.05	7.96	0.39	0.17	0.01
	157			4	6.84	2.37	1.65	0.01	6.49	0.35	0.24	0.00
29	157			8	16.50	5.20	3.51	1.18	13.96	0.32	0.21	0.07

Table 2-3 Simulated averaged PD over 4 [cm²] area at n260 - Low Channel - Module1.

n260 - LOW CH					Averaged PD over 4 [cm ²] area in [w/m ²]				(PD exposure surface) / (PD worst surface)	
					Module1				Module1 (Ratio)	
Beam ID		Type	Pin	No. of feeds	(2mm)	(10mm)	(10mm)	(10mm)	(10mm)	(10mm)
AG0	AG1				S1	S1	S2	S4	S1/(worst S)	S2/(worst S)
0		Patch	6 [dBm]	1	1.66	0.43	0.78	2.58	0.17	0.30
	128			1	2.22	0.73	0.38	2.02	0.33	0.17
0	128			2	4.35	1.25	1.35	5.07	0.25	0.27
4				2	4.10	1.60	0.71	3.66	0.39	0.17
	130			2	2.85	0.86	1.12	3.32	0.26	0.34
4	130			4	8.33	2.65	2.41	7.83	0.32	0.29
2				2	2.75	1.06	1.34	3.39	0.31	0.39
	132			2	4.12	1.65	0.53	3.31	0.40	0.13
2	132			4	7.78	2.87	2.35	7.47	0.37	0.30
3				2	4.23	1.81	1.28	4.54	0.40	0.28
	131			2	3.37	1.40	1.71	4.57	0.30	0.37
3	131			4	9.32	4.04	3.78	10.27	0.39	0.37
8				2	3.87	1.25	0.93	3.50	0.32	0.24
	137			2	3.13	1.27	1.22	3.80	0.33	0.32
8	137			4	8.66	3.61	2.80	8.86	0.41	0.32
9				2	4.73	1.96	1.17	4.86	0.40	0.24
	136			2	3.11	1.20	1.72	4.68	0.26	0.37
9	136			4	9.21	3.82	3.55	9.87	0.39	0.36
15				4	8.12	3.42	1.89	8.14	0.42	0.23
	140			4	6.07	2.38	2.75	7.88	0.30	0.35
15	140			4	15.19	6.66	4.83	17.09	0.39	0.28
13				4	6.67	2.62	3.52	9.38	0.28	0.38
	143			4	7.74	3.15	1.60	7.40	0.41	0.21
13	143			8	16.06	6.87	5.64	18.48	0.37	0.31
14				4	6.97	2.72	3.11	8.85	0.31	0.35
	144			4	8.12	3.16	2.01	7.91	0.39	0.25
14	144			8	15.13	5.79	5.15	17.27	0.34	0.30
12				4	5.44	1.91	3.04	7.90	0.24	0.38
	141			4	6.68	3.01	2.93	8.03	0.37	0.36
12	141			8	14.74	5.53	5.06	15.41	0.36	0.33
16				4	5.49	2.12	3.32	8.26	0.26	0.40
	142			4	7.45	3.36	2.71	8.23	0.41	0.33
16	142			8	14.69	6.27	6.46	17.50	0.36	0.37
25				4	6.93	2.89	2.45	6.39	0.42	0.35
	153			4	7.27	2.48	2.03	6.06	0.34	0.28
25	153			8	14.70	4.79	3.67	12.88	0.33	0.25
24				4	7.78	3.50	3.25	9.35	0.37	0.35
	150			4	6.67	2.95	3.09	8.47	0.35	0.36
24	150			8	18.71	8.62	6.61	21.50	0.40	0.31
22				4	5.95	2.31	3.46	8.91	0.26	0.39
	152			4	8.20	3.68	2.25	8.21	0.45	0.27
22	152			8	15.68	6.94	6.63	17.93	0.39	0.37
23				4	7.89	3.76	3.42	9.55	0.39	0.36
	151			4	6.57	2.69	2.70	7.90	0.34	0.34
23	151			8	15.63	7.22	6.98	17.87	0.40	0.39

Table 2-4 Simulated averaged PD over 4 [cm^2] area at n260 - Mid Channel - Module0.

n260 - MID CH					Averaged PD over 4 [cm^2] area in [w/m^2]					(PD exposure surface) / (PD worst surface)		
					Module0					Module0 (Ratio)		
Beam ID					(2mm)	(10mm)	(10mm)	(10mm)	(10mm)	(10mm)	(10mm)	(10mm)
AG0	AG1	Type	Pin	No. of feeds	S1	S1	S2	S3	S5	S1/(worst S)	S2/(worst S)	S3/(worst S)
1		Patch	6 [dBm]	1	3.03	0.94	0.43	0.00	2.57	0.31	0.14	0.00
	129			1	2.52	0.77	0.43	0.00	2.36	0.31	0.17	0.00
1	129			2	5.70	2.13	1.24	0.47	5.35	0.37	0.22	0.08
6				2	4.37	1.92	1.92	0.01	5.35	0.36	0.36	0.00
	134			2	4.30	1.92	1.57	0.00	5.24	0.37	0.30	0.00
6	134			4	11.80	5.37	5.12	0.59	12.33	0.44	0.41	0.05
7				2	5.87	2.44	1.04	0.01	5.26	0.42	0.18	0.00
	133			2	3.74	1.24	1.24	0.01	3.89	0.32	0.32	0.00
7	133			4	11.13	4.85	3.29	0.68	9.93	0.44	0.30	0.06
5				2	5.03	1.69	1.12	0.01	4.18	0.34	0.22	0.00
	135			2	4.59	1.46	1.34	0.01	4.60	0.32	0.29	0.00
5	135			4	11.68	4.58	2.48	1.16	11.05	0.39	0.21	0.10
11				2	4.12	1.58	1.15	0.01	4.50	0.35	0.25	0.00
	138			2	4.29	1.70	1.61	0.01	4.99	0.34	0.32	0.00
11	138			4	11.30	4.63	4.44	1.25	12.42	0.37	0.36	0.10
10				2	4.26	1.63	1.83	0.01	5.39	0.30	0.34	0.00
	139			2	4.74	1.84	1.06	0.01	4.65	0.39	0.22	0.00
10	139			4	11.52	5.05	3.82	0.34	11.18	0.44	0.33	0.03
18				4	8.92	3.72	3.28	0.02	10.11	0.37	0.32	0.00
	147			4	8.05	3.98	3.10	0.03	9.67	0.41	0.32	0.00
18	147			8	21.87	10.54	6.95	1.96	23.57	0.45	0.29	0.08
19				4	7.85	3.22	2.97	0.02	9.27	0.35	0.32	0.00
	146			4	7.52	3.34	3.68	0.01	9.57	0.35	0.38	0.00
19	146			8	18.69	8.47	8.07	0.61	20.57	0.41	0.39	0.03
21				4	7.75	2.59	2.37	0.02	7.93	0.33	0.30	0.00
	148			4	8.26	3.23	1.90	0.01	8.59	0.38	0.22	0.00
21	148			8	17.92	7.89	5.16	1.37	18.09	0.44	0.29	0.08
17				4	8.37	2.81	2.18	0.02	7.64	0.34	0.26	0.00
	145			4	6.88	2.35	2.77	0.02	8.44	0.28	0.33	0.00
17	145			8	19.50	7.02	5.85	2.03	19.28	0.36	0.30	0.10
20				4	11.66	4.91	2.23	0.02	11.02	0.42	0.19	0.00
	149			4	7.35	2.29	2.48	0.01	8.18	0.28	0.30	0.00
20	149			8	22.53	8.82	5.90	1.56	20.76	0.39	0.26	0.07
28				4	10.59	4.67	3.04	0.01	11.21	0.42	0.27	0.00
	154			4	8.36	3.45	3.82	0.01	10.58	0.33	0.36	0.00
28	154			8	21.08	9.78	8.09	0.88	23.75	0.41	0.34	0.04
26				4	7.71	3.03	2.59	0.02	8.60	0.35	0.30	0.00
	156			4	8.52	3.89	3.21	0.03	10.05	0.39	0.32	0.00
26	156			8	21.14	9.98	7.27	1.26	21.21	0.47	0.34	0.06
27				4	8.47	3.64	3.40	0.02	9.72	0.37	0.35	0.00
	155			4	6.14	2.48	2.99	0.01	8.71	0.28	0.34	0.00
27	155			8	17.89	8.02	8.02	2.22	19.47	0.41	0.41	0.11
29				4	10.52	4.18	1.57	0.02	9.47	0.40	0.15	0.00
	157			4	7.77	2.51	2.05	0.01	7.90	0.32	0.26	0.00
29	157			8	19.30	7.07	4.49	1.21	17.26	0.37	0.23	0.06

Table 2-5 Simulated averaged PD over 4 [cm²] area at n260 - Mid Channel - Module1.

n260 - MID CH					Averaged PD over 4 [cm^2] area in [w/m^2]				(PD exposure surface) / (PD worst surface)	
					Module1				Module1 (Ratio)	
Beam ID					(2mm)	(10mm)	(10mm)	(10mm)	(10mm)	(10mm)
AG0	AG1	Type	Pin	No. of feeds	S1	S1	S2	S4	S1/(worst S)	S2/(worst S)
0		6 [dBm]		1	2.12	0.58	0.79	2.87	0.20	0.27
	128			1	2.31	0.71	0.46	2.23	0.31	0.20
0	128			2	5.54	1.52	1.77	5.40	0.27	0.32
4				2	4.23	1.43	1.02	4.27	0.34	0.24
	130			2	4.12	1.21	1.34	4.43	0.27	0.30
4	130			4	12.57	4.08	3.40	10.31	0.32	0.27
2				2	3.62	1.14	1.54	4.57	0.25	0.34
	132			2	4.72	1.92	0.89	4.22	0.41	0.19
2	132			4	11.41	3.68	3.75	10.03	0.32	0.33
3				2	3.69	1.59	1.44	4.30	0.37	0.34
	131			2	3.94	1.71	1.91	5.14	0.33	0.37
3	131			4	10.44	4.85	5.15	11.55	0.42	0.45
8				2	4.22	1.46	1.07	3.98	0.35	0.25
	137			2	4.08	1.64	1.52	4.62	0.36	0.33
8	137			4	12.20	5.12	4.08	10.90	0.42	0.33
9				2	3.81	1.60	1.32	4.60	0.35	0.29
	136			2	3.88	1.49	1.75	5.21	0.29	0.34
9	136			4	10.16	4.27	4.18	10.23	0.42	0.41
15				4	7.69	3.12	2.56	8.72	0.36	0.29
	140			4	7.76	2.96	2.75	9.25	0.32	0.30
15	140			4	17.85	7.07	5.93	19.58	0.36	0.30
13		Patch		4	8.73	3.58	4.18	11.59	0.31	0.36
	143			4	9.51	4.06	2.01	8.78	0.43	0.21
13	143			8	21.53	8.83	7.49	22.55	0.39	0.33
14				4	7.03	2.57	3.31	9.06	0.28	0.37
	144			4	8.66	3.27	2.40	8.92	0.37	0.27
14	144			8	17.01	6.11	5.80	18.19	0.34	0.32
12				4	7.15	2.53	3.23	9.21	0.27	0.35
	141			4	8.08	3.24	3.61	10.06	0.32	0.36
12	141			8	17.37	6.22	6.11	19.17	0.32	0.32
16				4	7.05	2.85	3.46	9.49	0.30	0.36
	142			4	9.02	4.18	3.18	10.14	0.41	0.31
16	142			8	20.20	8.98	8.51	21.19	0.42	0.40
25				4	7.38	3.02	2.72	7.52	0.40	0.36
	153			4	7.79	2.54	2.07	7.57	0.33	0.27
25	153			8	17.51	6.32	4.58	16.81	0.36	0.26
24				4	8.43	3.82	3.82	10.65	0.36	0.36
	150			4	8.49	3.47	3.44	10.18	0.34	0.34
24	150			8	19.77	8.99	7.59	23.48	0.38	0.32
22				4	7.72	3.16	3.75	10.45	0.30	0.36
	152			4	9.88	4.50	3.11	10.44	0.43	0.30
22	152			8	20.96	9.64	9.20	21.99	0.44	0.42
23				4	6.41	2.81	4.07	9.42	0.30	0.43
	151			4	6.31	2.38	2.91	7.91	0.30	0.37
23	151			8	13.30	5.91	8.96	19.58	0.30	0.46

Table 2-6 Simulated averaged PD over 4 [cm^2] area at n260 - High Channel - Module0.

n260 - HIGH CH					Averaged PD over 4 [cm^2] area in [w/m^2]					(PD exposure surface) / (PD worst surface)		
					Module0					Module0 (Ratio)		
Beam ID					(2mm)	(10mm)	(10mm)	(10mm)	(10mm)	(10mm)	(10mm)	(10mm)
AG0	AG1	Type	Pin	No. of feeds	S1	S1	S2	S3	S5	S1/(worst S)	S2/(worst S)	S3/(worst S)
1		Patch	6 [dBm]	1	2.83	0.87	0.43	0.00	2.23	0.31	0.15	0.00
	129			1	2.57	0.76	0.38	0.00	2.13	0.30	0.15	0.00
1	129			2	5.82	1.92	1.22	0.66	4.97	0.33	0.21	0.11
6				2	3.87	1.56	1.69	0.00	5.07	0.31	0.33	0.00
	134			2	4.57	1.72	1.49	0.00	5.13	0.33	0.29	0.00
6	134			4	9.94	4.29	4.71	1.25	11.55	0.37	0.41	0.11
7				2	5.25	2.11	1.13	0.00	4.70	0.40	0.22	0.00
	133			2	3.64	1.24	0.85	0.00	3.12	0.34	0.23	0.00
7	133			4	10.63	3.86	3.05	0.63	8.82	0.36	0.29	0.06
5				2	4.29	1.45	1.02	0.00	3.69	0.34	0.24	0.00
	135			2	4.90	1.54	1.19	0.00	4.58	0.32	0.24	0.00
5	135			4	11.46	4.10	2.38	1.42	9.94	0.36	0.21	0.12
11				2	4.47	1.58	1.09	0.00	4.75	0.33	0.23	0.00
	138			2	4.65	1.61	1.42	0.00	4.74	0.34	0.30	0.00
11	138			4	12.08	4.34	3.92	1.43	11.24	0.36	0.32	0.12
10				2	4.02	1.61	1.47	0.00	4.91	0.33	0.30	0.00
	139			2	4.69	1.87	1.28	0.00	5.13	0.36	0.25	0.00
10	139			4	11.59	4.96	3.80	0.44	11.82	0.42	0.32	0.04
18				4	7.47	2.99	2.54	0.01	8.30	0.36	0.31	0.00
	147			4	8.01	3.47	2.70	0.01	9.11	0.38	0.30	0.00
18	147			8	18.06	8.15	6.63	1.68	18.89	0.43	0.35	0.09
19				4	9.18	3.42	2.20	0.00	8.87	0.37	0.24	0.00
	146			4	6.71	2.79	2.92	0.00	8.20	0.34	0.36	0.00
19	146			8	16.71	7.05	6.86	0.57	18.58	0.38	0.37	0.03
21				4	8.76	3.17	2.14	0.01	7.71	0.36	0.24	0.00
	148			4	8.15	3.46	1.84	0.01	8.38	0.41	0.22	0.00
21	148			8	17.57	7.66	4.52	1.35	17.88	0.43	0.25	0.08
17				4	9.00	3.20	2.04	0.01	8.02	0.36	0.23	0.00
	145			4	7.35	2.54	2.30	0.01	8.18	0.31	0.28	0.00
17	145			8	19.69	6.19	5.25	2.37	18.59	0.31	0.27	0.12
20				4	9.86	4.04	2.12	0.01	9.99	0.40	0.21	0.00
	149			4	8.29	2.76	1.65	0.00	7.79	0.33	0.20	0.00
20	149			8	22.95	7.66	5.76	2.85	19.78	0.33	0.25	0.12
28				4	9.61	3.94	2.52	0.01	10.14	0.39	0.25	0.00
	154			4	7.38	3.02	2.79	0.01	8.58	0.35	0.32	0.00
28	154			8	18.22	7.43	7.22	0.77	19.99	0.37	0.36	0.04
26				4	7.39	2.54	2.02	0.01	7.65	0.33	0.26	0.00
	156			4	7.88	3.68	2.56	0.01	8.93	0.41	0.29	0.00
26	156			8	18.75	8.64	5.76	1.31	19.16	0.45	0.30	0.07
27				4	7.51	3.17	3.31	0.01	9.02	0.35	0.37	0.00
	155			4	6.73	2.61	2.56	0.00	7.81	0.33	0.33	0.00
27	155			8	14.88	6.35	8.81	2.91	20.62	0.31	0.43	0.14
29				4	9.64	3.77	1.71	0.01	9.29	0.39	0.18	0.00
	157			4	8.15	2.87	1.75	0.00	7.86	0.35	0.21	0.00
29	157			8	20.06	6.78	3.90	1.07	18.18	0.34	0.19	0.05

Table 2-7 Simulated averaged PD over 4 [cm^2] area at n260 - High Channel - Module1.

n260 - HIGH CH					Averaged PD over 4 [cm ²] area in [w/m ²]				(PD exposure surface) / (PD worst surface)	
					Module1				Module1 (Ratio)	
Beam ID					(2mm)	(10mm)	(10mm)	(10mm)	(10mm)	(10mm)
AG0	AG1	Type	Pin	No. of feeds	S1	S1	S2	S4	S1/(worst S)	S2/(worst S)
0		Patch	6 [dBm]	1	2.34	0.69	0.58	2.86	0.24	0.20
	128			1	2.11	0.53	0.43	2.22	0.24	0.19
0	128			2	6.09	1.76	1.68	5.81	0.29	0.28
4				2	4.25	1.45	1.23	4.36	0.33	0.28
	130			2	5.04	1.51	1.10	4.63	0.30	0.22
4	130			4	13.84	4.82	3.78	10.74	0.35	0.27
2				2	3.92	1.29	1.40	4.94	0.26	0.28
	132			2	4.16	1.58	0.96	3.85	0.38	0.23
2	132			4	11.94	3.93	4.01	10.56	0.33	0.34
3				2	3.88	1.46	1.65	4.76	0.31	0.35
	131			2	4.48	1.88	1.79	5.80	0.32	0.31
3	131			4	10.52	4.72	5.05	12.06	0.39	0.42
8				2	4.06	1.19	1.07	4.02	0.29	0.26
	137			2	4.63	1.85	1.29	4.83	0.38	0.27
8	137			4	12.21	5.05	3.92	10.94	0.41	0.32
9				2	4.36	1.57	1.61	5.31	0.29	0.30
	136			2	4.77	1.90	1.69	5.98	0.32	0.28
9	136			4	12.46	5.01	5.01	12.97	0.39	0.39
15				4	7.22	3.16	2.24	8.62	0.37	0.26
	140			4	6.87	2.45	2.12	7.61	0.32	0.28
15	140			4	17.03	6.56	5.19	17.46	0.38	0.30
13				4	7.38	2.70	3.32	9.51	0.28	0.35
	143			4	8.37	3.46	1.84	8.43	0.41	0.22
13	143			8	21.17	8.66	6.80	20.14	0.41	0.32
14				4	7.93	2.84	2.69	9.41	0.30	0.29
	144			4	8.60	3.22	2.48	9.70	0.33	0.26
14	144			8	18.98	6.69	5.60	19.24	0.35	0.29
12				4	6.99	2.51	2.64	8.35	0.30	0.32
	141			4	8.16	3.37	2.60	9.36	0.36	0.28
12	141			8	18.18	6.34	5.96	20.04	0.32	0.30
16				4	7.28	2.97	2.88	8.07	0.37	0.36
	142			4	8.28	3.41	2.70	9.40	0.36	0.29
16	142			8	17.68	7.07	7.90	20.83	0.34	0.38
25				4	7.69	3.19	2.70	8.09	0.39	0.33
	153			4	8.14	2.70	2.05	8.13	0.33	0.25
25	153			8	16.56	5.81	5.04	16.83	0.35	0.30
24				4	8.05	3.47	3.30	10.46	0.33	0.32
	150			4	8.06	3.35	2.26	8.64	0.39	0.26
24	150			8	18.70	8.43	7.34	20.80	0.41	0.35
22				4	6.98	2.52	2.86	8.57	0.29	0.33
	152			4	7.87	3.51	2.52	9.09	0.39	0.28
22	152			8	16.30	7.07	7.90	20.65	0.34	0.38
23				4	7.73	3.06	3.67	10.19	0.30	0.36
	151			4	7.25	2.74	3.27	9.45	0.29	0.35
23	151			8	15.86	6.27	10.08	22.79	0.28	0.44

Table 2-8 Simulated averaged PD over 4 [cm²] area at n261 - Low Channel - Module0.

n261 - LOW CH					Averaged PD over 4 [cm^2] area in [w/m^2]					(PD exposure surface) / (PD worst surface)		
					Module0					Module0 (Ratio)		
Beam ID					(2mm)	(10mm)	(10mm)	(10mm)	(10mm)	(10mm)	(10mm)	(10mm)
AG0	AG1	Type	Pin	No. of feeds	S1	S1	S2	S3	S5	S1/(worst S)	S2/(worst S)	S3/(worst S)
1		Patch	6 [dBm]	1	1.98	0.62	0.71	0.18	2.07	0.30	0.34	0.09
	129			1	2.34	0.79	0.59	0.12	2.04	0.34	0.25	0.05
1	129			2	5.34	1.77	1.64	0.39	4.59	0.33	0.31	0.07
6				2	4.94	1.83	1.52	0.10	4.90	0.37	0.31	0.02
	134			2	4.74	2.00	1.66	0.07	5.19	0.39	0.32	0.01
6	134			4	12.34	5.09	4.09	0.23	11.67	0.41	0.33	0.02
7				2	3.33	1.17	1.81	0.29	4.29	0.27	0.42	0.07
	133			2	3.31	1.17	0.91	0.32	2.41	0.35	0.28	0.10
7	133			4	8.57	3.28	3.24	0.65	7.28	0.38	0.38	0.08
5				2	2.62	0.73	1.33	0.53	2.60	0.28	0.51	0.20
	135			2	3.27	1.34	1.21	0.42	3.30	0.41	0.37	0.13
5	135			4	8.25	2.95	2.55	1.40	5.76	0.36	0.31	0.17
10				2	4.71	1.77	1.18	0.34	3.88	0.38	0.25	0.07
	139			2	3.98	1.70	1.50	0.27	4.35	0.39	0.35	0.06
10	139			4	8.93	3.76	3.24	0.88	8.94	0.42	0.36	0.10
11				2	4.37	1.65	1.71	0.15	4.96	0.33	0.35	0.03
	138			2	4.48	1.85	1.44	0.22	4.37	0.41	0.32	0.05
11	138			4	10.76	4.31	3.99	0.59	10.21	0.40	0.37	0.06
21				4	5.50	2.23	2.91	1.08	7.50	0.30	0.39	0.14
	145			4	6.48	2.71	1.97	0.88	4.89	0.42	0.30	0.14
21	145			8	13.78	5.32	5.78	2.02	13.64	0.39	0.42	0.15
20				4	8.95	4.22	4.11	0.32	10.08	0.42	0.41	0.03
	146			4	8.44	4.15	3.38	0.26	8.78	0.47	0.38	0.03
20	146			8	19.78	9.64	8.81	0.64	22.54	0.43	0.39	0.03
19				4	10.18	4.86	3.63	0.11	9.79	0.48	0.36	0.01
	147			4	7.57	3.75	3.65	0.11	8.83	0.42	0.41	0.01
19	147			8	21.51	10.76	8.78	0.30	23.01	0.47	0.38	0.01
17				4	5.48	1.68	1.85	0.89	4.42	0.31	0.34	0.16
	149			4	5.21	2.08	1.77	0.66	5.30	0.39	0.34	0.12
17	149			8	12.43	4.42	4.36	2.28	10.84	0.36	0.35	0.18
18				4	9.27	4.41	2.89	0.22	8.39	0.48	0.31	0.02
	148			4	7.38	3.31	3.59	0.39	8.28	0.40	0.43	0.05
18	148			8	19.15	9.29	6.43	0.87	19.14	0.49	0.34	0.05
28				4	9.52	4.65	3.86	0.14	9.86	0.47	0.39	0.01
	155			4	8.05	3.85	3.40	0.10	8.73	0.44	0.39	0.01
28	155			8	20.90	10.30	8.68	0.26	22.63	0.46	0.38	0.01
27				4	10.10	4.99	3.58	0.21	9.70	0.49	0.35	0.02
	156			4	8.16	3.97	3.63	0.17	9.26	0.43	0.39	0.02
27	156			8	21.60	10.84	8.36	0.48	22.95	0.47	0.36	0.02
26				4	7.42	2.80	2.17	0.70	6.43	0.38	0.29	0.09
	157			4	5.64	2.30	2.63	0.56	6.52	0.35	0.40	0.09
26	157			8	15.07	6.28	5.37	1.86	14.44	0.42	0.36	0.12
29				4	6.78	2.83	3.63	0.95	8.88	0.32	0.41	0.11
	154			4	7.54	3.59	3.18	0.40	7.59	0.47	0.42	0.05
29	154			8	15.85	7.06	6.77	1.68	18.06	0.39	0.37	0.09

Table 2-9 Simulated averaged PD over 4 [cm^2] area at n261 - Low Channel - Module1.

n261 - LOW CH					Averaged PD over 4 [cm^2] area in [w/m^2]				(PD exposure surface) / (PD worst surface)	
					Module1				Module1 (Ratio)	
Beam ID		Type	Pin	No. of feeds	(2mm)	(10mm)	(10mm)	(10mm)	(10mm)	(10mm)
AG0	AG1				S1	S1	S2	S4	S1/(worst S)	S2/(worst S)
0		Patch	6 [dBm]	1	1.88	0.58	0.67	2.03	0.29	0.33
	128			1	1.98	0.58	0.73	2.18	0.27	0.34
0	128			2	4.49	1.28	1.49	4.81	0.27	0.31
2				2	2.88	0.78	1.06	2.62	0.27	0.37
	132			2	2.79	0.88	1.43	3.13	0.28	0.46
2	132			4	6.91	2.22	2.83	6.06	0.32	0.41
3				2	4.25	1.83	1.72	4.82	0.38	0.36
	131			2	4.42	1.65	1.84	5.22	0.32	0.35
3	131			4	10.47	4.21	4.17	10.28	0.40	0.40
4				2	2.78	0.98	0.84	2.50	0.35	0.30
	130			2	4.36	1.56	1.41	4.30	0.36	0.32
4	130			4	8.06	3.04	2.71	6.94	0.38	0.34
8				2	4.03	1.69	1.59	4.23	0.40	0.38
	137			2	3.19	1.22	1.21	3.42	0.36	0.35
8	137			4	7.80	3.18	3.37	8.27	0.38	0.41
9				2	3.40	1.19	1.37	3.85	0.31	0.36
	136			2	4.67	1.70	1.77	5.26	0.32	0.34
9	136			4	9.47	3.64	3.56	8.83	0.38	0.38
14				4	8.26	3.84	4.65	10.32	0.37	0.45
	141			4	9.14	4.23	3.63	9.67	0.44	0.38
14	141			4	20.81	9.65	9.52	24.19	0.40	0.39
12				4	6.96	3.01	3.67	8.11	0.37	0.45
	143			4	7.19	3.10	3.61	8.61	0.36	0.42
12	143			8	15.59	6.67	8.68	18.24	0.37	0.48
13				4	9.06	4.23	3.84	10.09	0.42	0.38
	142			4	7.97	3.61	3.89	9.07	0.40	0.43
13	142			8	20.43	9.30	9.40	23.79	0.39	0.40
15				4	6.73	2.85	3.26	8.47	0.34	0.38
	140			4	8.14	3.51	2.79	8.10	0.43	0.34
15	140			8	15.65	6.51	6.98	16.98	0.38	0.41
16				4	4.71	1.47	1.46	4.15	0.31	0.31
	144			4	4.75	1.48	2.02	5.39	0.28	0.37
16	144			8	11.87	3.41	4.29	9.63	0.29	0.36
23				4	8.88	4.07	4.06	10.03	0.41	0.41
	151			4	8.65	4.01	3.78	9.43	0.42	0.40
23	151			8	20.90	9.57	9.33	24.16	0.40	0.39
22				4	7.87	3.62	3.87	9.34	0.39	0.41
	152			4	7.70	3.48	3.97	8.95	0.39	0.44
22	152			8	18.58	8.49	9.73	21.95	0.39	0.44
24				4	8.35	3.75	3.89	9.86	0.38	0.39
	150			4	8.92	4.16	3.44	9.43	0.44	0.37
24	150			8	19.75	8.93	8.17	20.22	0.44	0.40
25				4	5.03	2.03	2.27	6.47	0.31	0.35
	153			4	6.66	2.74	3.29	8.38	0.33	0.39
25	153			8	11.71	4.17	4.65	10.24	0.36	0.40

Table 2-10 Simulated averaged PD over 4 [cm^2] area at n261 - Mid Channel - Module0.

n261 - MID CH					Averaged PD over 4 [cm^2] area in [w/m^2]					(PD exposure surface) / (PD worst surface)		
					Module0					Module0 (Ratio)		
Beam ID					(2mm)	(10mm)	(10mm)	(10mm)	(10mm)	(10mm)	(10mm)	(10mm)
AG0	AG1	Type	Pin	No. of feeds	S1	S1	S2	S3	S5	S1/(worst S)	S2/(worst S)	S3/(worst S)
1		Patch	6 [dBm]	1	1.63	0.45	0.76	0.21	1.89	0.24	0.40	0.11
	129			1	2.32	0.81	0.51	0.11	1.95	0.35	0.22	0.05
1	129			2	5.01	1.69	1.66	0.48	4.31	0.34	0.33	0.10
6				2	4.41	1.63	1.49	0.13	4.58	0.35	0.33	0.03
	134			2	4.64	2.03	1.64	0.06	4.89	0.41	0.34	0.01
6	134			4	12.11	5.13	4.30	0.28	10.93	0.42	0.35	0.02
7				2	3.05	0.97	1.87	0.24	3.98	0.24	0.47	0.06
	133			2	2.97	1.09	0.82	0.29	2.25	0.37	0.28	0.10
7	133			4	7.96	2.98	3.16	0.69	6.93	0.37	0.40	0.09
5				2	2.33	0.66	1.30	0.58	2.40	0.28	0.54	0.24
	135			2	3.54	1.45	1.05	0.40	3.25	0.41	0.30	0.11
5	135			4	8.50	3.20	2.25	1.67	5.56	0.38	0.27	0.20
10				2	4.05	1.61	1.33	0.36	3.46	0.40	0.33	0.09
	139			2	4.01	1.80	1.38	0.26	4.17	0.43	0.33	0.06
10	139			4	8.20	3.56	3.44	0.99	8.58	0.41	0.40	0.12
11				2	3.91	1.40	1.78	0.12	4.58	0.30	0.39	0.03
	138			2	4.35	1.84	1.35	0.20	4.17	0.42	0.31	0.05
11	138			4	10.53	4.20	4.06	0.58	9.48	0.40	0.39	0.05
21				4	5.65	2.29	2.56	1.03	7.00	0.33	0.36	0.15
	145			4	6.33	2.98	1.69	0.88	4.96	0.47	0.27	0.14
21	145			8	13.76	5.68	4.40	2.04	12.95	0.41	0.32	0.15
20				4	7.99	3.65	4.15	0.31	9.52	0.38	0.44	0.03
	146			4	7.95	3.89	3.32	0.22	8.56	0.45	0.39	0.03
20	146			8	18.11	8.62	8.89	0.58	22.12	0.39	0.40	0.03
19				4	9.79	4.74	3.51	0.13	9.61	0.48	0.36	0.01
	147			4	7.13	3.52	3.67	0.11	8.66	0.41	0.42	0.01
19	147			8	21.18	10.59	8.81	0.37	23.00	0.46	0.38	0.02
17				4	5.36	1.78	1.64	0.81	4.22	0.33	0.31	0.15
	149			4	5.67	2.28	1.57	0.64	5.40	0.40	0.28	0.11
17	149			8	13.99	5.34	3.88	1.82	10.28	0.38	0.28	0.13
18				4	8.24	4.13	2.88	0.38	7.61	0.50	0.35	0.05
	148			4	7.05	3.02	3.23	0.38	7.85	0.38	0.41	0.05
18	148			8	17.46	8.30	6.45	1.24	17.44	0.47	0.37	0.07
28				4	8.96	4.36	3.80	0.14	9.46	0.46	0.40	0.01
	155			4	7.51	3.63	3.59	0.09	8.65	0.42	0.42	0.01
28	155			8	19.51	9.68	9.14	0.27	22.53	0.43	0.41	0.01
27				4	9.34	4.58	3.55	0.22	9.41	0.49	0.38	0.02
	156			4	7.74	3.68	3.54	0.17	8.99	0.41	0.39	0.02
27	156			8	20.75	10.07	8.50	0.58	22.77	0.44	0.37	0.03
26				4	6.60	2.57	2.33	0.66	6.03	0.39	0.35	0.10
	157			4	5.93	2.48	2.33	0.52	6.38	0.39	0.37	0.08
26	157			8	15.34	6.71	5.10	1.68	13.40	0.44	0.33	0.11
29				4	6.58	2.66	3.40	0.92	8.35	0.32	0.41	0.11
	154			4	7.38	3.57	2.85	0.40	7.52	0.47	0.38	0.05
29	154			8	15.28	6.75	6.74	1.63	17.42	0.39	0.39	0.09

Table 2-11 Simulated averaged PD over 4 [cm^2] area at n261 - Mid Channel - Module1.

n261 - MID CH					Averaged PD over 4 [cm^2] area in [w/m^2]				(PD exposure surface) / (PD worst surface)	
					Module1				Module1 (Ratio)	
Beam ID					(2mm)	(10mm)	(10mm)	(10mm)	(10mm)	(10mm)
AG0	AG1	Type	Pin	No. of feeds	S1	S1	S2	S4	S1/(worst S)	S2/(worst S)
0		Patch	6 [dBm]	1	1.72	0.49	0.67	1.94	0.25	0.35
	128			1	1.76	0.49	0.75	2.01	0.25	0.37
0	128			2	4.14	1.19	1.54	4.66	0.26	0.33
2				2	2.89	0.86	1.00	2.73	0.30	0.34
	132			2	2.49	0.78	1.39	2.93	0.27	0.47
2	132			4	6.46	2.26	2.62	6.36	0.35	0.41
3				2	4.49	1.94	1.51	4.82	0.40	0.31
	131			2	3.93	1.43	1.91	4.97	0.29	0.38
3	131			4	10.28	4.12	4.04	10.01	0.40	0.39
4				2	2.94	1.09	0.88	2.37	0.37	0.30
	130			2	4.19	1.54	1.24	3.94	0.37	0.30
4	130			4	7.74	2.97	2.75	7.17	0.38	0.36
8				2	4.37	1.87	1.34	4.28	0.43	0.31
	137			2	3.11	1.17	1.17	3.32	0.35	0.35
8	137			4	7.84	3.26	3.16	8.31	0.39	0.38
9				2	3.25	1.21	1.39	3.76	0.32	0.37
	136			2	4.32	1.57	1.72	4.96	0.32	0.35
9	136			4	9.07	3.65	3.65	8.94	0.40	0.40
14				4	7.84	3.66	4.67	10.09	0.36	0.46
	141			4	8.82	4.09	3.48	9.42	0.43	0.37
14	141			4	20.26	9.40	8.88	23.28	0.40	0.38
12				4	7.64	3.37	3.21	8.38	0.40	0.38
	143			4	6.56	2.86	3.66	8.29	0.34	0.44
12	143			8	15.91	7.05	8.18	18.20	0.39	0.45
13				4	9.03	4.22	3.56	9.76	0.43	0.36
	142			4	7.55	3.41	3.81	8.67	0.39	0.44
13	142			8	19.65	9.03	8.91	22.95	0.39	0.39
15				4	5.79	2.53	3.10	7.67	0.33	0.40
	140			4	7.46	3.26	2.50	7.50	0.43	0.33
15	140			8	14.12	6.02	6.73	16.41	0.37	0.41
16				4	4.72	1.54	1.62	4.54	0.33	0.34
	144			4	4.32	1.42	1.90	5.10	0.28	0.37
16	144			8	11.33	3.43	4.19	9.11	0.30	0.37
23				4	8.82	4.07	3.94	9.82	0.41	0.40
	151			4	8.46	3.92	3.56	9.13	0.43	0.39
23	151			8	20.74	9.62	8.89	23.45	0.41	0.38
22				4	8.45	3.86	3.42	9.33	0.41	0.37
	152			4	6.89	3.06	4.18	8.73	0.35	0.48
22	152			8	18.20	8.35	9.44	21.82	0.38	0.43
24				4	7.06	3.23	3.84	8.93	0.36	0.43
	150			4	8.29	3.89	3.22	8.88	0.44	0.36
24	150			8	16.99	7.72	7.72	18.23	0.42	0.42
25				4	4.61	1.91	2.29	6.30	0.30	0.36
	153			4	6.12	2.59	3.03	7.72	0.33	0.39
25	153			8	11.17	4.17	4.28	9.54	0.37	0.38

Table 2-12 Simulated averaged PD over 4 [cm^2] area at n261 - High Channel - Module0.

n261 - HIGH CH					Averaged PD over 4 [cm^2] area in [w/m^2]					(PD exposure surface) / (PD worst surface)		
					Module0					Module0 (Ratio)		
Beam ID					(2mm)	(10mm)	(10mm)	(10mm)	(10mm)	(10mm)	(10mm)	(10mm)
AG0	AG1	Type	Pin	No. of feeds	S1	S1	S2	S3	S5	S1/(worst S)	S2/(worst S)	S3/(worst S)
1		Patch	6 [dBm]	1	1.52	0.40	0.64	0.21	1.70	0.23	0.38	0.13
	129			1	2.25	0.78	0.46	0.10	1.85	0.35	0.21	0.04
1	129			2	5.06	1.63	1.53	0.49	3.78	0.32	0.30	0.10
6				2	3.96	1.43	1.44	0.17	4.26	0.34	0.34	0.04
	134			2	4.37	1.90	1.64	0.05	4.77	0.40	0.34	0.01
6	134			4	11.13	4.61	4.13	0.30	9.99	0.41	0.37	0.03
7				2	3.03	0.99	1.56	0.23	3.66	0.27	0.43	0.06
	133			2	2.72	0.95	0.74	0.25	2.01	0.35	0.27	0.09
7	133			4	7.56	2.74	3.01	0.69	6.72	0.36	0.40	0.09
5				2	2.45	0.76	1.00	0.61	2.12	0.31	0.41	0.25
	135			2	3.54	1.38	1.12	0.34	3.23	0.39	0.32	0.10
5	135			4	8.97	3.47	2.43	1.65	5.13	0.39	0.27	0.18
10				2	3.37	1.31	1.32	0.38	3.23	0.39	0.39	0.11
	139			2	3.78	1.67	1.48	0.24	4.12	0.41	0.36	0.06
10	139			4	7.91	3.27	3.79	0.98	8.52	0.38	0.44	0.11
11				2	3.61	1.23	1.66	0.12	4.30	0.29	0.38	0.03
	138			2	4.23	1.79	1.23	0.20	3.96	0.42	0.29	0.05
11	138			4	10.18	3.99	3.68	0.56	8.64	0.39	0.36	0.05
21				4	5.88	2.53	2.06	0.91	6.34	0.40	0.33	0.14
	145			4	6.28	2.98	1.29	0.85	4.65	0.47	0.21	0.14
21	145			8	13.69	5.61	4.02	1.99	12.25	0.41	0.29	0.15
20				4	7.59	3.41	3.81	0.24	9.14	0.37	0.42	0.03
	146			4	7.11	3.40	3.27	0.20	7.99	0.43	0.41	0.02
20	146			8	16.35	7.66	8.19	0.49	20.55	0.37	0.40	0.02
19				4	9.17	4.50	3.37	0.15	9.00	0.49	0.37	0.02
	147			4	6.47	3.00	3.78	0.12	8.58	0.35	0.44	0.01
19	147			8	19.02	9.51	8.81	0.39	21.64	0.44	0.41	0.02
17				4	5.37	1.86	1.44	0.75	4.45	0.35	0.27	0.14
	149			4	5.43	2.21	1.51	0.63	5.10	0.41	0.28	0.12
17	149			8	14.45	5.68	3.18	1.83	10.17	0.39	0.22	0.13
18				4	7.08	3.56	2.78	0.50	6.97	0.50	0.39	0.07
	148			4	6.49	2.68	2.78	0.37	7.15	0.37	0.39	0.05
18	148			8	15.07	7.16	6.43	1.46	14.74	0.48	0.43	0.10
28				4	8.47	4.05	3.84	0.13	9.25	0.44	0.42	0.01
	155			4	6.80	3.18	3.64	0.11	8.52	0.37	0.43	0.01
28	155			8	17.71	8.56	9.00	0.30	21.61	0.40	0.42	0.01
27				4	8.64	4.25	3.29	0.24	8.65	0.49	0.38	0.03
	156			4	6.80	3.05	3.55	0.21	8.46	0.36	0.42	0.02
27	156			8	18.28	8.95	8.29	0.66	20.60	0.43	0.40	0.03
26				4	6.41	2.46	2.08	0.74	6.03	0.38	0.33	0.12
	157			4	5.62	2.42	2.00	0.46	5.86	0.41	0.34	0.08
26	157			8	15.51	6.90	5.14	1.69	13.18	0.45	0.33	0.11
29				4	6.69	2.82	2.75	0.77	7.56	0.37	0.36	0.10
	154			4	7.10	3.40	2.63	0.36	6.99	0.48	0.37	0.05
29	154			8	15.49	6.99	6.42	1.27	15.82	0.44	0.41	0.08

Table 2-13 Simulated averaged PD over 4 [cm^2] area at n261 - High Channel - Module1.

n261 - HIGH CH					Averaged PD over 4 [cm^2] area in [w/m^2]				(PD exposure surface) / (PD worst surface)	
					Module1				Module1 (Ratio)	
Beam ID					(2mm)	(10mm)	(10mm)	(10mm)	(10mm)	(10mm)
AG0	AG1	Type	Pin	No. of feeds	S1	S1	S2	S4	S1/(worst S)	S2/(worst S)
0		Patch	6 [dBm]	1	1.50	0.42	0.70	1.89	0.22	0.37
	128			1	1.56	0.44	0.74	1.83	0.24	0.41
0	128			2	3.56	1.05	1.59	4.29	0.24	0.37
2				2	2.61	0.77	0.94	2.63	0.29	0.36
	132			2	2.13	0.67	1.41	2.85	0.24	0.49
2	132			4	5.65	2.05	2.42	6.22	0.33	0.39
3				2	4.60	2.05	1.30	4.61	0.44	0.28
	131			2	3.58	1.30	2.01	4.79	0.27	0.42
3	131			4	10.30	4.33	4.14	9.74	0.42	0.40
4				2	2.85	1.01	0.96	2.35	0.35	0.34
	130			2	4.11	1.54	1.24	3.86	0.37	0.30
4	130			4	7.31	2.81	2.97	7.40	0.38	0.40
8				2	4.48	2.01	1.06	4.07	0.45	0.24
	137			2	3.09	1.20	1.04	3.12	0.38	0.33
8	137			4	8.13	3.51	2.67	8.15	0.43	0.33
9				2	3.06	1.23	1.52	3.70	0.33	0.41
	136			2	4.18	1.54	1.79	4.83	0.32	0.37
9	136			4	8.52	3.56	4.13	9.29	0.38	0.44
14				4	7.44	3.46	4.50	9.51	0.36	0.47
	141			4	8.53	3.98	3.30	9.03	0.44	0.36
14	141			4	19.27	9.00	8.07	21.31	0.42	0.38
12				4	7.87	3.50	2.63	8.00	0.44	0.33
	143			4	5.87	2.47	3.46	7.49	0.33	0.46
12	143			8	14.84	6.45	6.88	16.65	0.39	0.41
13				4	8.54	3.91	3.27	9.02	0.43	0.36
	142			4	7.29	3.41	3.59	8.18	0.42	0.44
13	142			8	18.65	8.70	8.13	21.37	0.41	0.38
15				4	5.20	2.25	3.03	7.30	0.31	0.42
	140			4	7.29	3.17	2.15	7.08	0.44	0.30
15	140			8	13.24	5.88	6.63	16.06	0.37	0.41
16				4	4.49	1.49	1.64	4.56	0.33	0.36
	144			4	4.30	1.43	1.80	5.04	0.28	0.36
16	144			8	10.74	3.46	3.97	9.05	0.32	0.37
23				4	8.09	3.66	3.72	9.01	0.41	0.41
	151			4	8.17	3.85	3.36	8.66	0.44	0.39
23	151			8	19.44	9.12	8.23	21.40	0.43	0.38
22				4	8.57	3.90	2.89	8.83	0.44	0.33
	152			4	6.38	2.79	4.04	8.13	0.34	0.50
22	152			8	17.13	7.81	8.10	20.38	0.38	0.40
24				4	6.28	2.87	3.92	8.42	0.34	0.47
	150			4	8.07	3.83	2.90	8.38	0.46	0.35
24	150			8	15.38	7.12	7.76	17.24	0.41	0.45
25				4	4.24	1.74	2.20	6.02	0.29	0.37
	153			4	5.49	2.31	2.74	6.96	0.33	0.39
25	153			8	10.09	3.76	3.83	8.77	0.37	0.38