

Antenna Datasheet – RFM004 – Host: D12+ Styletto IX

1 Information

Antenna Type	PCB – Inverted F Antenna		
Frequency (MHz)	2402	2440	2480
Conducted Power (dBm)	0.06	0.19	0.30
EIRP (dBm)	-4.03	-3.29	-9.99
Gain (dBi)	-4.09	-3.48	-10.29

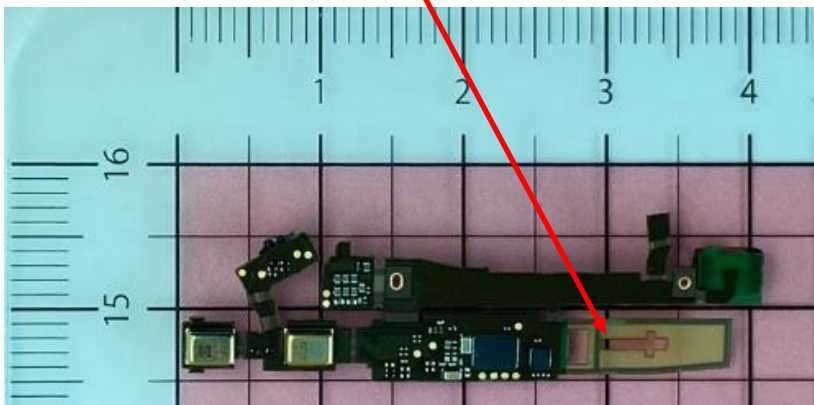
Where Gain = EIRP – Conducted Power

2 Antenna Location

The BLE Antenna is integrated into the PCB of the hearing aid as shown in the photo below:

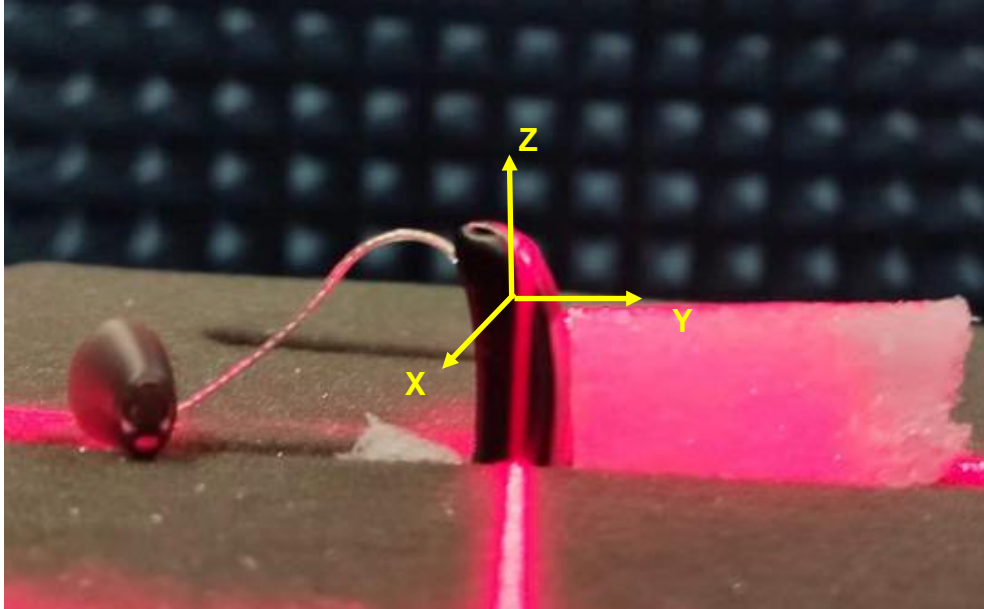


Antenna

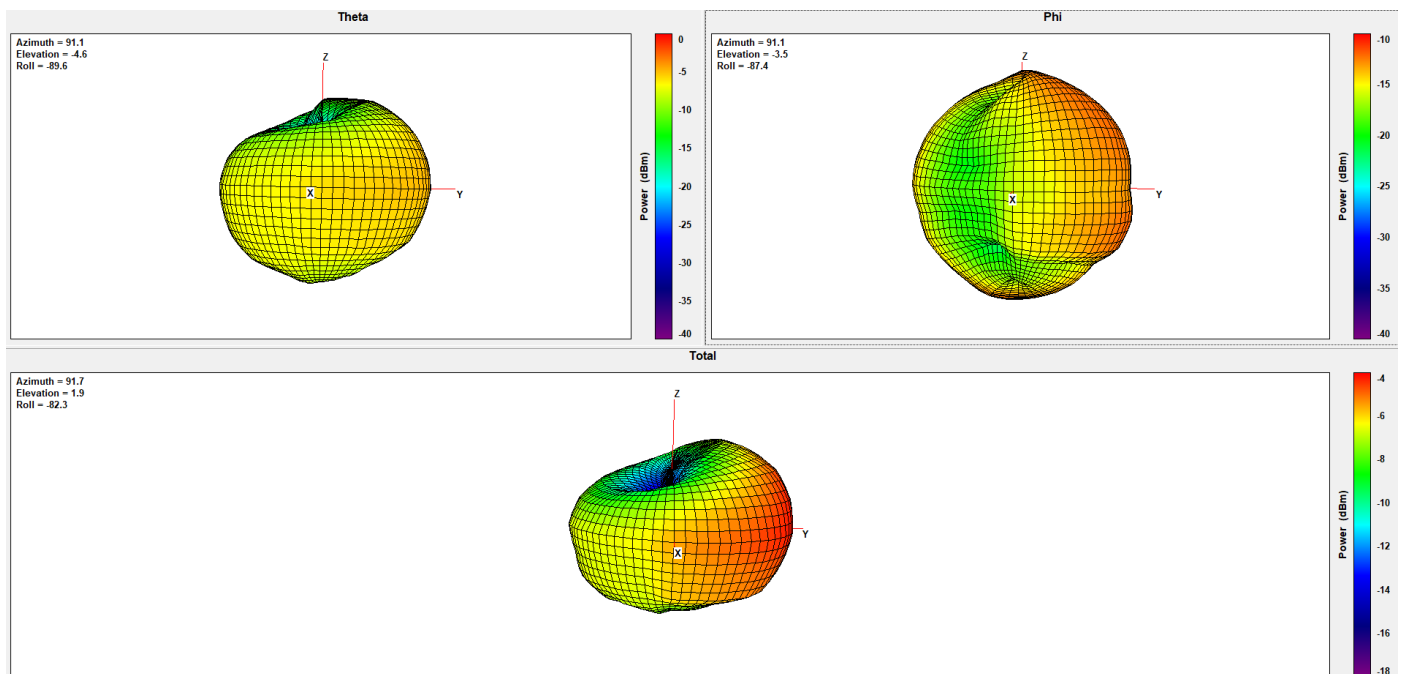


3 Antenna Radiation Pattern

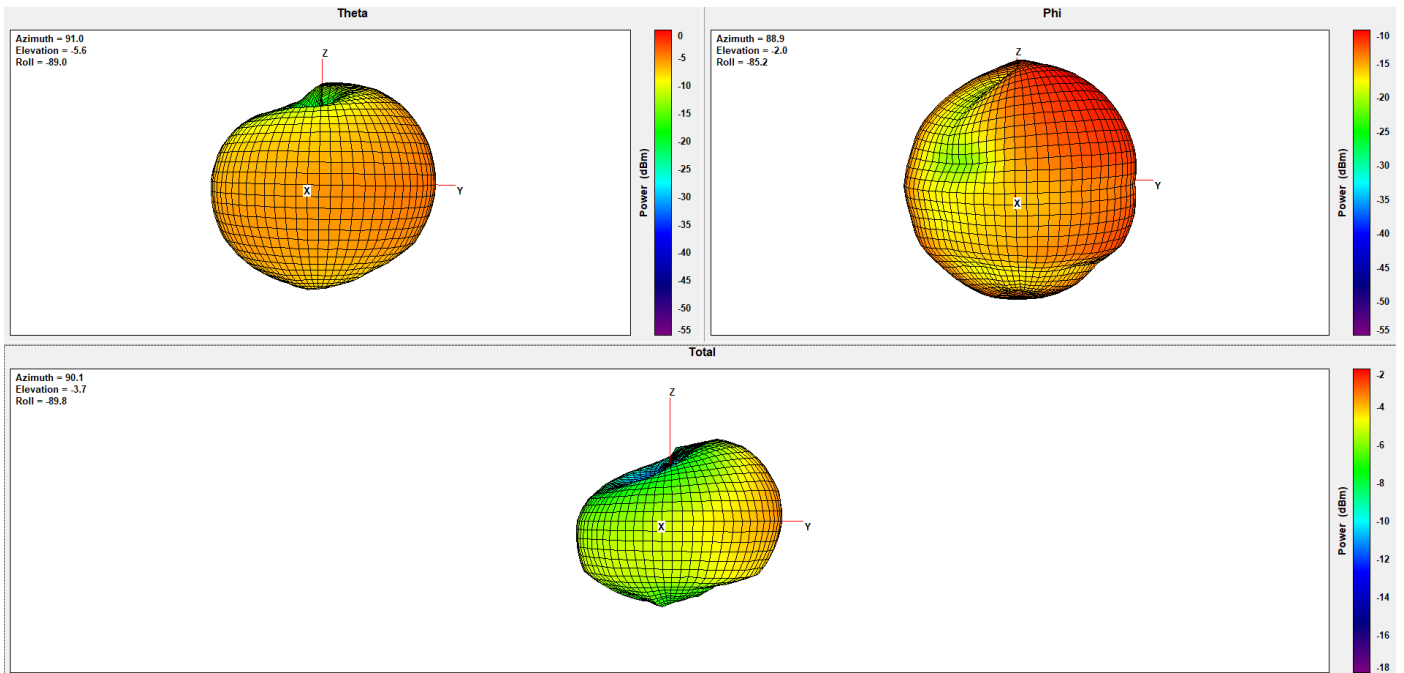
Orientation of Device under test:



2402 MHz



2440 MHz



2480 MHz

