

Measurement Report for WLAN 2.4GHz, BACK

Exposure Conditions

Band	WLAN 2.4GHz	TSL Permittivity	39.8
Frequency [MHz] Channel Number	2437.000 6	TSL Conductivity [S/m]	1.73
Group UID	WLAN 10415-AAA	Phantom Section TSL	Flat Head Simulating Liquid
Conversion Factor	7.73	Test Distance [mm]	0.00
Communication Configuration	IEEE 802.11b WiFi 2.4 GHz (DSSS, 1 Mbps, 99pc duty cycle)		

Hardware Setup

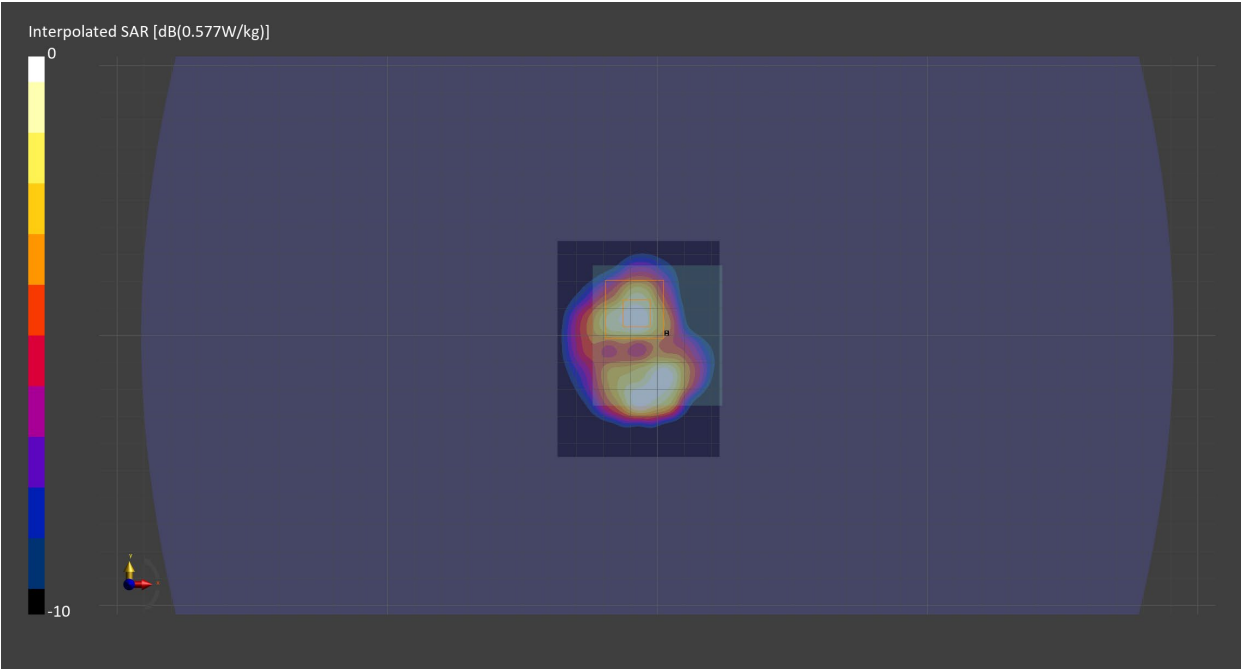
Probe Calibration Date	EX3DV4 - SN7709 2024-11-11	Phantom	ELI V5.0 (20deg probe tilt) - SN1196
DAE Calibration Date	DAE4 Sn1714 2024-11-06	TSL	HBBL-600-10000

Scans Setup

	Area Scan	Zoom Scan
Grid Extents [mm]	60.0 x 80.0	30.0 x 30.0 x 30.0
Grid Steps [mm]	10.0 x 10.0	5.0 x 5.0 x 1.5
Sensor Surface [mm]	3.0	1.4
Graded Grid	N/A	Yes
M2/M1 [%]		69.2
Dist 3dB Peak [mm]		4.7

Measurement Results

	Area Scan	Zoom Scan
psSAR1g [W/Kg]	0.181	0.182
psSAR10g [W/Kg]	0.083	0.072
Power Drift [dB]	0.05	-0.01



Measurement Report for Custom Band, BACK, NFC

Exposure Conditions

Band	Custom Band	TSL Permittivity	54.2
Frequency [MHz] Channel Number	13.600 13600	TSL Conductivity [S/m]	0.72
Group UID	CW 0--	Phantom Section TSL	Flat Head Simulating Liquid
Conversion Factor	15.55	Test Distance [mm]	0.00

Communication Configuration

CW

Hardware Setup

Probe Calibration Date	EX3DV4 - SN7709 2024-11-11	Phantom	ELI V8.0 (20deg probe tilt) - SN2081
DAE Calibration Date	DAE4 Sn1714 2024-11-06	TSL	HBBL4-250V3

Scans Setup

	Area Scan	Zoom Scan
Grid Extents [mm]	50.0 x 50.0	x x
Grid Steps [mm]	15.0 x 15.0	x x
Sensor Surface [mm]	3.0	
Graded Grid	N/A	
M2/M1 [%]		
Dist 3dB Peak [mm]		

Measurement Results

	Area Scan	Zoom Scan
psSAR1g [W/Kg]	0	0
psSAR10g [W/Kg]	0	0
Power Drift [dB]	N/A	N/A

