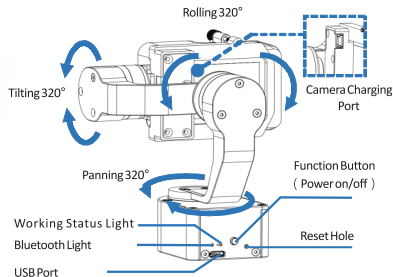
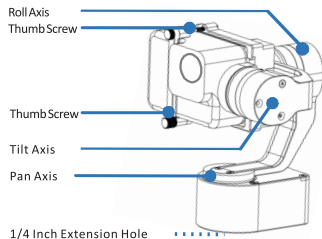
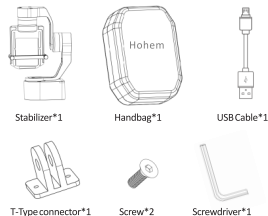


## Product Overview



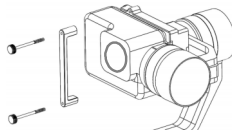
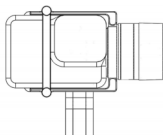
## Accessories List



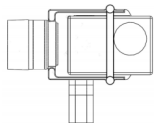
## Quick Installation

\*No need additional counter weight. Without power on, the gimbal can get the best self-balance status by setting the right position of the motors and camera placements.

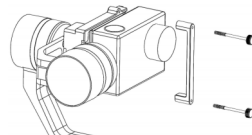
GoPro Hero 5  
(The lens next to the tilt motor)



Put the tilt motor to the RIGHT side, place GoPro Hero5 closely to the back clip as picture and tighten the knob to secure its position. Double tighten by the 2 long screws against violent movement.

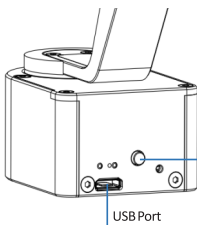


GoPro Hero 3/4/YI/CAM/SJCAM or other action camera of similar size (The lens is opposite to the tilt motor)



Place GoPro 4/3/YI/SJCAM etc. closely to the clip as picture show and tighten the knob to secure its position. Double tighten by the 2 long screws against violent movement.

## Operating Instructions



Function Button  
(Power on/off)

USB Port



USB Cable :

Operating	Work Modes	Mode Light	Instruction
Long Press for 3s	Power on/off	Quick Flash for twice	Default mode is pan following.
Single Press	Pan Following Mode	Flash for once, (Quick flash)	Tilt & roll axis both locked, camera can move to left or right smoothly.
Double Press	Pan & Tilt Following Mode	Flash for twice	Roll axis locked, camera can move to left/right, and tilt up/down.
Triple Press	All Locked Mode	Flash for triple	The camera stays in its current orientation.
Press For 4 Times	All Following Mode	Flash for once, (Slow flash)	Tilt axis, roll axis and pan axis all follow.
Press For 5 Times	Calibration	Solid on	Tilt or Roll angle not leveled with horizontal surface, or pan angle drift in lock mode.

### Use

#### Charging

#### Firmware Upgrade/ Calibration

### Instruction

Being Charged through USB directly, a gimbal would work constantly without time limits. If mode light flash quickly, it warns that gimbal power is running out soon and would enter into lower power protection status.

To make firmware upgrading or calibration by connecting with PC.

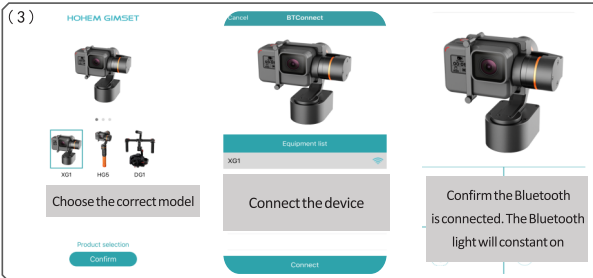
## APP Connecting Instruction

\*Support iOS system 8.0 or above and Android system 4.4 or above

- (1) Scan the QR code and download APP  
“Hohem Gimset” in APP Store or Google Play



- (2) Launch the Bluetooth on the smartphone



Please scan the QR code  
to get more functions  
introduction



Please scan the QR code  
to get more products  
enquiries

#### Federal Communication Commission (FCC) Radiation Exposure Statement

When using the product, maintain a distance of 5mm from the body to ensure compliance with RF exposure requirements.

#### FCC statements:

This device complies with part 15 of the FCC rules. Operation is subject to the following two conditions: (1) this device may not cause harmful interference, and (2) this device must accept any interference received, including interference that may cause undesired operation.

NOTE: The manufacturer is not responsible for any radio or TV interference caused by unauthorized modifications or changes to this equipment. Such modifications or changes could void the user's authority to operate the equipment.

NOTE: This equipment has been tested and found to comply with the limits for a Class B digital device, pursuant to part 15 of the FCC Rules. These limits are designed to provide reasonable protection against harmful interference in a residential installation. This equipment generates uses and can radiate radio frequency energy and, if not installed and used in accordance with the instructions, may cause harmful interference to radio communications. However, there is no guarantee that interference will not occur in a particular installation. If this equipment does cause harmful interference to radio or television reception, which can be determined by turning the equipment off and on, the user is encouraged to try to correct the interference by one or more of the following measures:

- Reorient or relocate the receiving antenna.
- Increase the separation between the equipment and receiver.
- Connect the equipment into an outlet on a circuit different from that to which the receiver is connected.
- Consult the dealer or an experienced radio/TV technician for help.

#### SIMPLIFIED EU DECLARATION OF CONFORMITY

Hereby, [Name of manufacturer Hohem Technology Co., Ltd. declares that the radio equipment type [designation of type of radio equipment XG1 is in compliance with Directive 2014/53/EU. The full text of the EU declaration of conformity is available at the following internet address:[www.hohem-tech.com](http://www.hohem-tech.com).

(the power:-0.79dbm ;2402-2483.5MHz)