



AmazonBasics
6-Button Ergonomic
2.4GHz Wireless Mouse with
mechanical fast scrolling – Black

Model: G74, G6K-B01, B08P6PL5R3

PRODUCT GUIDE

FCC COMPLIANCE STATEMENT:

This device complies with part 15 of the FCC Rules. Operation is subject to the following two conditions.
(1) This device may not cause harmful interference, and
(2) this device must accept any interference received, including interference that may cause undesired operation.

Note: This equipment has been tested and found to comply with the limits for a Class B digital device, pursuant to Part 15 of the FCC Rules. These limits are designed to provide reasonable protection against harmful interference in a residential installation. This equipment generates, uses and can radiate radio frequency energy and, if not installed and used in accordance with the instructions, may cause harmful interference to radio communications. However, there is no guarantee that interference will not occur in a particular installation. If this equipment does cause harmful interference to radio or television reception, which can be determined by turning the equipment off and on, the user is encouraged to try to correct the interference by one or more of the following measures: Reorient or relocate the receiving antenna.

Increase the separation between the equipment and receiver.
Connect the equipment into an outlet on a circuit different from that to which the receiver is connected.
Consult the dealer or an experienced radio/TV technician for help.

Warning: Changes or modifications to this unit not expressly approved by the part responsible for compliance could void the user's authority to operate the equipment.

FCC Radiation Exposure Statement

The product complies with the FCC portable RF exposure limit set forth for an uncontrolled environment and is safe for intend operation as described in this manual. The further RF exposure reduction can be achieved if the product can be kept as far as possible from the user's body or set the device to lower output power if such function is available.

IC Notice:

This device complies with Canada Industry licence-exempt RSS standard(s).

Operation is subject to the following two conditions:

- (1) this device may not cause interference, and
(2) this device must accept any interference, including interference that may cause undesired operation of the device.

CAN ICES-3 (B)

Le present appareil est conforme aux CNR d'Industrie Canada applicables aux appareils radio exempts de licence. L'exploitation est autorisee aux deux conditions suivantes :

- (1) l'appareil ne doit pas produire de brouillage; (2) l'utilisateur de l'appareil doit accepter tout brouillage radioelectrique subi, meme si le brouillage est susceptible d'en compromettre le fonctionnement.

NMB-3 (B)

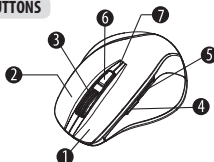
OPERATING SYSTEM

* Microsoft Windows 7 * Microsoft Windows 8 * Microsoft Windows 10 and higher

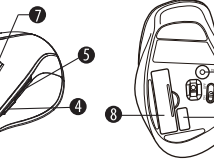
| | |
|-------------------------|-------------------------------------|
| Key numbers | 6 buttons |
| DPI Resolution | 800, 1300, 1600 DPI |
| Report Rate | 125 times/sec |
| Rated Voltage / Current | 50mA |
| Dimension | 116.3 (L) x 82.5 (W) x 53.4 (H)mm |
| Weight | About 102.5g (battery not included) |

(Battery life may vary depending on user and computing conditions)

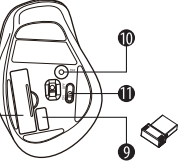
BUTTONS



1. Left click
2. Right click
3. Scrolling wheel
4. Forward



5. Backward
6. Middle click
7. LED indicator
8. Battery Cover



9. Nano receiver and its storage
10. DPI switch
11. OFF/ON switch

Forward

Press to view the next page in the Internet browser

Backward

Press to view the previous page in the Internet browser

Hyper Fast Scrolling (Two scrolling modes)

Press and push down the scrolling wheel to switch from Normal Scrolling & Hyper Fast Scrolling modes

* Default is Normal Scroll *

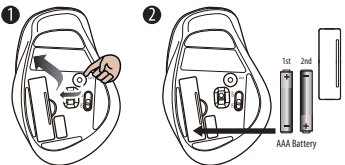


SETUP YOUR WIRELESS MOUSE

Step 1: Take the BATTERY COVER off

Step 2: Insert the batteries as shown inside the battery storage

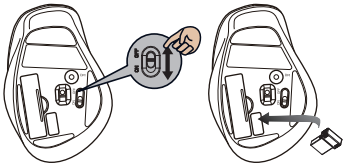
Step 3: Replace the battery cover



Step 4: Insert the Nano Receiver into your computer USB port

Step 5: Turn on the Power Switch

Step 6: Your mouse will connect automatically, letting you use your mouse wirelessly



SETUP THE CONNECTION BETWEEN YOUR WIRELESS MOUSE AND COMPUTER

If your wireless mouse has not been connected to your computer after completing the previous steps, the following information will help you to complete the connection

1. Turn off and then turn on the mouse again
2. Make sure the computer is turn on
3. Insert the Nano receiver and press the middle click and the right click at the same time
4. The LED indicator will start flashing and start pairing with the Nano receiver on the computer
5. Your mouse will connect automatically

DPI ADJUSTMENT

①→②→③→① DPI Cycle

| | Press DPI switch | |
|---|-------------------------------|----------|
| ① | LED indicator flashes once | 800 DPI |
| ② | LED indicator flashes twice | 1300 DPI |
| ③ | LED indicator flashes 3 times | 1600 DPI |

