

Photo 3. EUT, Case Opened



Photo 4. EUT, Top View of Main Chassis with Case Removed Showing RX/TX and VCO Boards

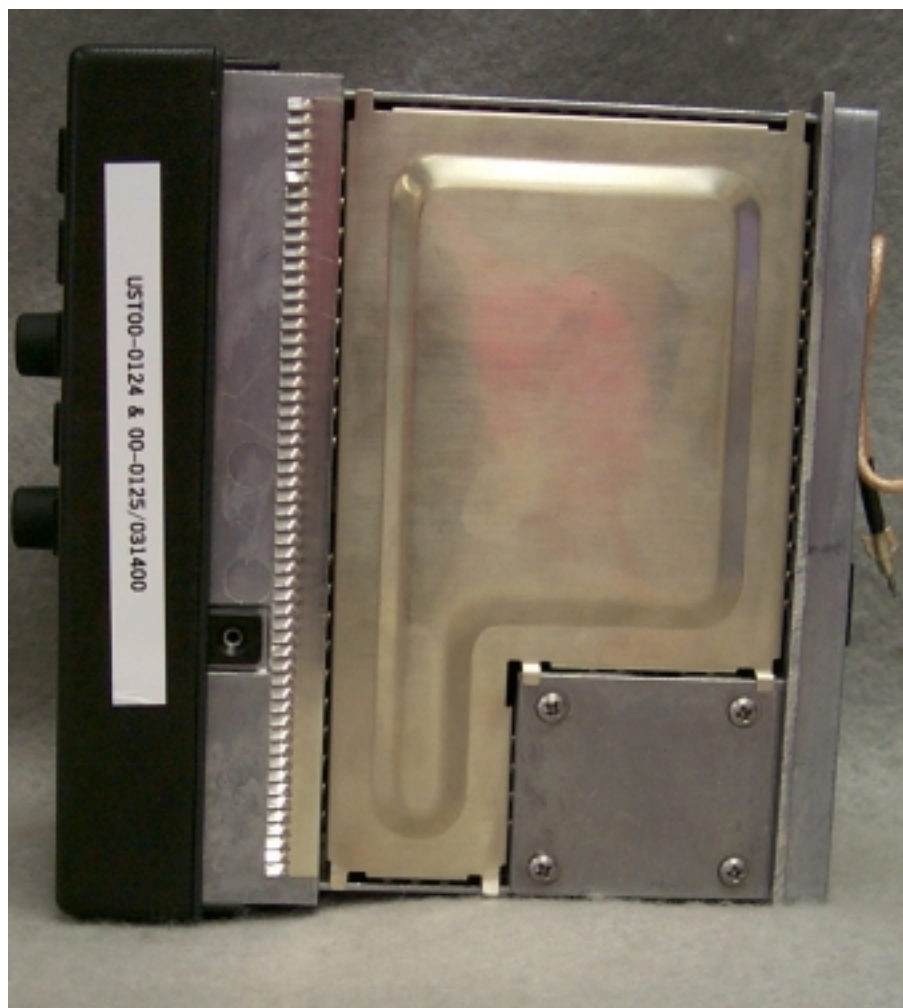






Photo 6. EUT, Bottom View of RX/TX Board

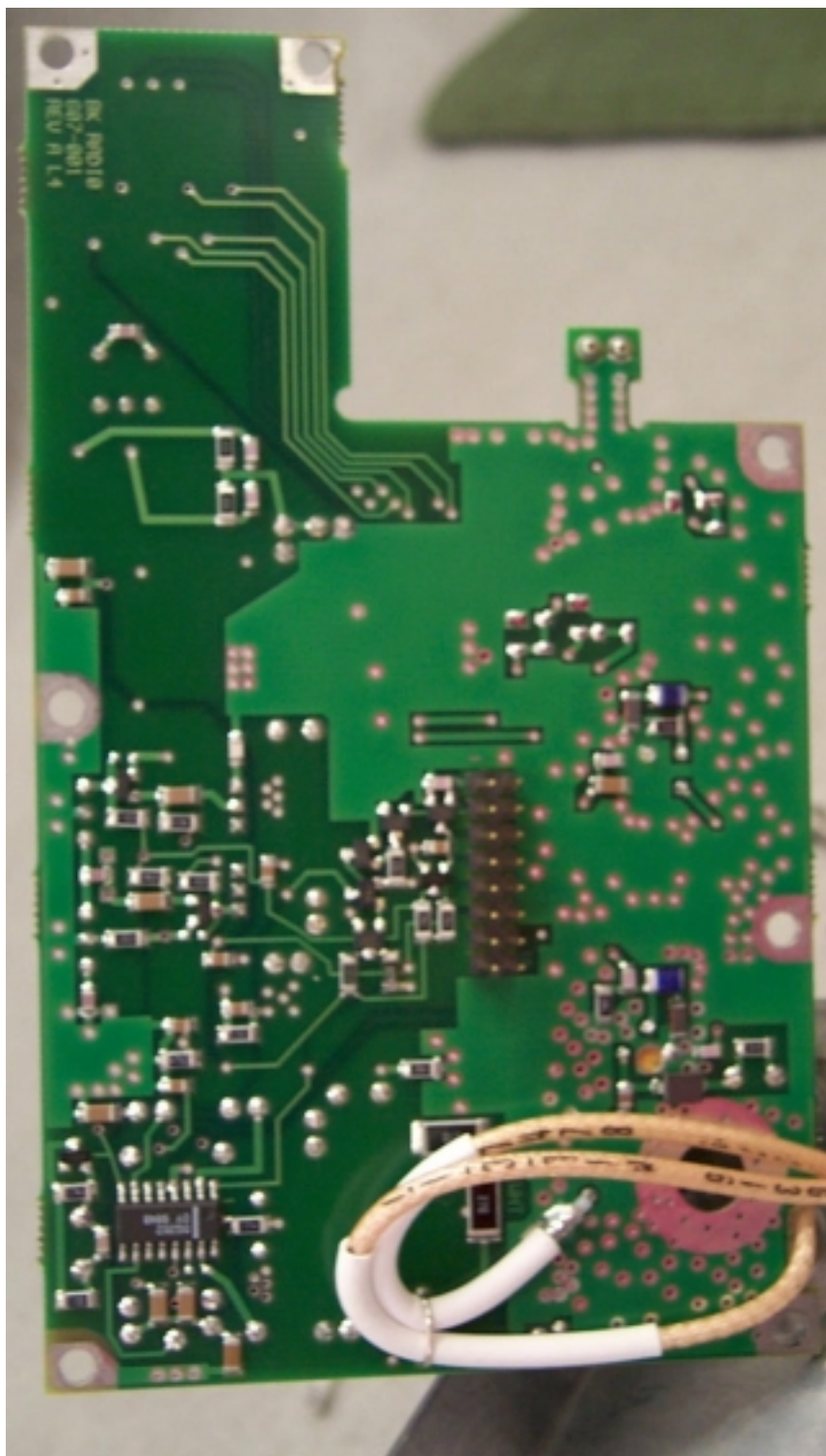


Photo 7. EUT, Top View of VCO Board

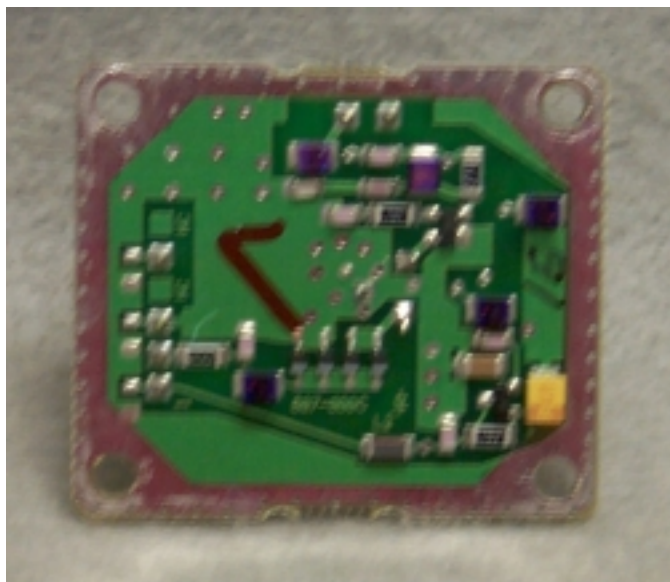


Photo 8. EUT, Bottom View of VCO Board

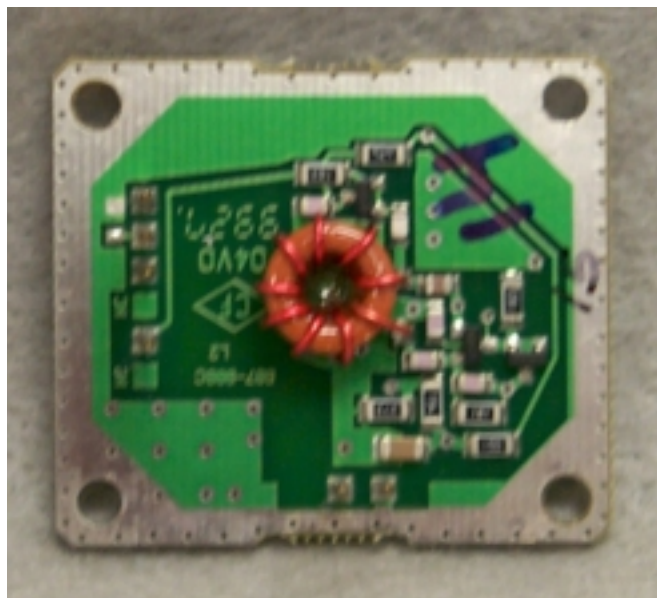


Photo 9. EUT, Bottom View of Main Chassis with Case Removed Showing System Board

