



Since 1987

R7 PowerSaver

Wireless Optical Mouse

User's Guide

Model: R7-10

www.a4tech.com

THIS DEVICE COMPLIES WITH PART 15 OF THE FCC RULES. OPERATION IS SUBJECT TO THE FOLLOWING TWO CONDITIONS: (1) THIS DEVICE MAY NOT CAUSE HARMFUL INTERFERENCE AND (2) THIS DEVICE MUST ACCEPT ANY INTERFERENCE RECEIVED, INCLUDING INTERFERENCE THAT MAY CAUSE UNDESIRE OPERATION.

Federal Communications Commission Requirements

The equipment has been tested and found to comply with the limits for Class B Digital Device, pursuant to part 15 of the FCC Rules. These limits are designed to provide reasonable protection against harmful interference in a residential installation. This equipment generates, uses and can radiate radio frequency energy and, if not installed and used in accordance with the instruction, may cause harmful interference to radio communication. However, there is no guarantee that interference will not occur in a particular installation. If this equipment does cause harmful interference to radio or television reception, which can be determined by turning the equipment off and on, the user is encouraged to try to correct the interference by one or more of the following measures:

- Reorient or relocate the receiving antenna.
- Increase the separation between the equipment and receiver.
- Connect the equipment into an outlet on a circuit different from that to which the receiver is connected.
- Consult the dealer or an experienced radio/TV technician for help.

The changes or modifications not expressly approved by the party responsible for compliance could void the user's authority to operate the equipment.

INTRODUCTION

Congratulations on your purchase!

Your new RF-Mouse R7 PowerSaver is designed with R7 Extremely Low-Power Technology only requires 7mA electric current while others require 25mA. Wow! Just turn your mouse battery –life 3 times longer. Same time, R7 PowerSave performs high-speed RF technology with report rate of 125Hz [***Normal wireless optical mice performs with reports rate of only 90Hz (Tested by Mouse Rate Program)*].

- **Package contains:**

R7 PowerSaver Wireless Optical Mouse

USB RF Receiver

2 AAA Alkaline Batteries

User's Manual

- **System Requirements:**

To use the mouse presenter, your computer must meet the following hardware requirements and run one of the operating system listed below.

Hardware

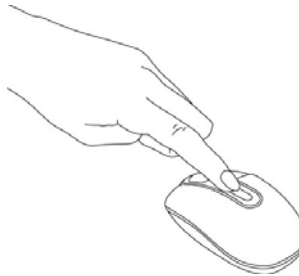
1. IBM or compatible system
2. UBS v1.1 or higher interface
3. Hard Disk Driver
4. USB Port

Operating System

Windows®98/Me/2000/2003/XP/x64

Inserting the Batteries

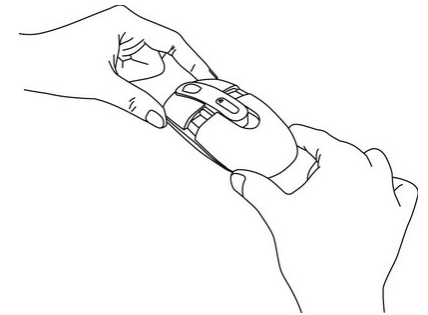
1. Press the tab on the front of the mouse cover as shown here and remove the cover.
2. Insert the supplied batteries, making sure that the positive (+) and negative (-) ends of the battery match the polarity indicators inside the battery housing.
3. Slide the batter cover back into position until it “clicks” firmly into place.



Step1



Step2



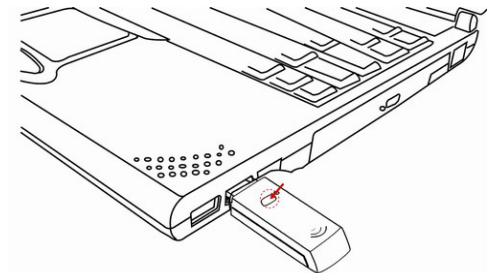
Step3

To connect the receiver

Insert the Receiver USB port connector into the available computer USB port. You can choose anyway to connect the USB receive with computer as blow:

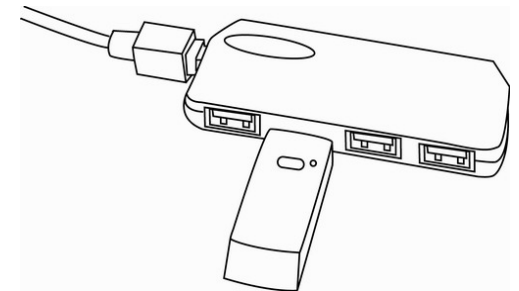
For laptop computer usage:

Insert the USB mouse port connector into the USB port on laptop computer. Easy take and use.



2. For PC computer usage:

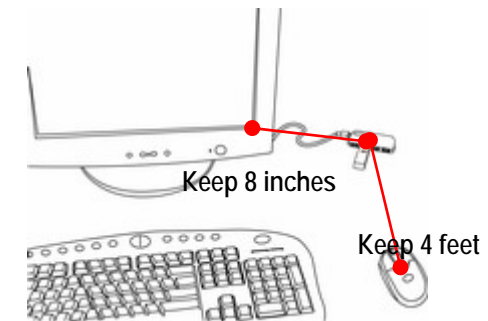
Insert the USB receives mouse port connector into the USB HUB port.



Locating the USB RF-Mouse Receiver

Your RF-Mouse has limitations on the range or distance from its receiver. To make sure that your mouse sends and receives properly, refer to the following instructions:

1. For optimal performance, place the receiver at least 8 inches (20 centimeters) away from other electrical devices, such as the computer, the monitor, or external storage drives.
2. The RF-Mouse should be no farther than 4 feet (1.5 meter) from the mouse receiver. This will ensure optimal communication between the mouse and receiver.



Operating Hints: For optimal performance and RF reception:

1. Avoid using the mouse on a metal surface. Metals, such as iron, aluminum or copper, shield the radio frequency transmission and may slow down the mouse's response time or cause the mouse presenter to fail temporarily.
2. The mouse will enter a suspend mode at the same time your computer does. Click a button on the mouse presenter to activate it.
3. Never use the mouse on a glass or mirrored surface as these surfaces will cause the mouse to fail temporarily.

Establish Frequency Channel and ID Code

USB RF Mouse Receiver: launch frequency channel and ID code to RF-Mouse

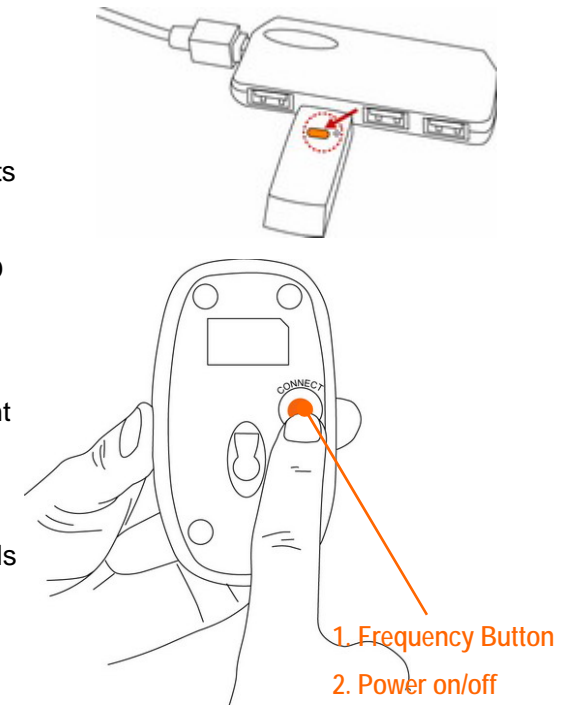
Press and release the connect button on the front of USB receiver (shown as right image), the GREEN PWR LED light turns “Off” and starts “Blinking.

Wireless optical mouse : Respond frequency channel and ID code from Receiver

Press and release (1 second) the connect button on the bottom of mouse, the RED PWR LED light turns “Off” and starts “Blinking with right frequency channel and ID code . (shown as right image)

When the mouse is inactive, If the GREENPWR LED light of USB RF Mouse Receiver is black out, it indicates that the right frequency channels and ID codes are launched successfully between the receiver and the mouse, otherwise, repeat the procedures of the right frequency channel and ID codes. You are now ready to use the mouse.

Note: The connect button has two functions. **One function is** correspond frequency with USB receiver. **Other function is** power switch. you can control power on-off through it (please operate as “**Power Management**”

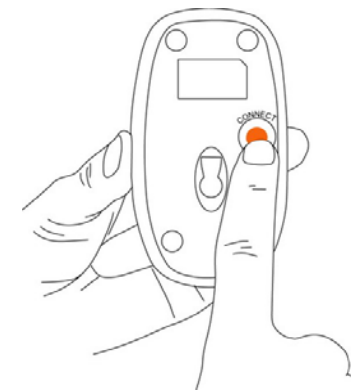


show)

Power Management

Manual Power on/off method

1. To power the mouse on, please press and release the switch bottom of the mouse within in 1 second.
2. Turn off the mouse while traveling or when you don't use it. Please press and release the switch bottom of the mouse within 4 seconds.
(if you use this mouse , you must power on the mouse again)



Automatic Power on/off method

If this mouse is kept non-operation in 30 minutes, Mouse turns off automatically. If you awaken this mouse, you can click left or right button on the mouse.

Note: Removing the batteries will require you to synchronize it with the receiver again the next time you turn it back on.

Practical electrical current usage text sheet (on white paper)

Battery Voltage (V)	Use Electrical Current (mA)
3.3	6.9



R7 PowerSaver Wireless Optical Mouse

3.2	7.0
3.1	7.3
3.0	7.4
2.9	7.6

Intelligent 4 Power-Saving (SLEEP MODE): There are 4 sleep mode features activating PowerSaver mouse

Mouse status	Enter Sleep mode	Electrical Current usage(mA)	Savable electricity(mA)
200 milliseconds non-operation	idle mode	2.1	5.9
5 seconds non-operation	sleeping mode	0.8	7.2
70 seconds non-operation	deep sleeping mode	0.1	7.9
30 minute non-operation	turns off automatically	0.01	7.99

To wake up the mouse from sleep mode, you must click left or right button on the mouse.

TECH SUPPORT

For tech support, please visit our website at <http://support.a4tech.com/> or email us at support@a4tech.com