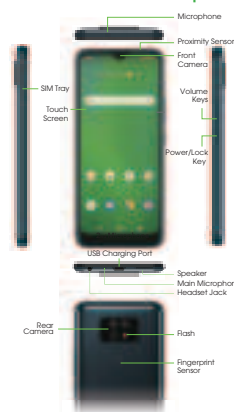


cricket® wireless

Quick Start Guide

Cricket® Ovation 2

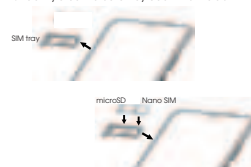
Getting to Know Your Cricket® Ovation 2 Smartphone



Setting Up Your Phone

Install a SIM/microSD card*

1. Insert the SIM Card Tray Pin into the card tray slot and remove the SIM card tray.
2. Place the Nano SIM card and microSD card (Not included) into the tray.
3. Gently slide the card tray back into the slot.



Charge using the AC Adaptor

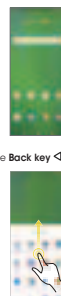
1. Connect one end of the data cable to the USB port located on the bottom of your phone.
2. Connect the other end to the power adaptor.
3. Connect the power adaptor to an electrical outlet to fully charge your phone.

*WARNING!

To avoid damage to the phone, do not use any other kind of SIM card or any non-standard Nano SIM card cut from a SIM card. You can get a standard Nano SIM card from your service provider.

Using the Touch Screen

- Swipe up on the screen to unlock.
- Use your fingertip to lightly tap the screen.
- Use quick flicks of your finger on the touch screen to swipe up, down, left and right.
- Spread two fingers apart or pinch them together on the screen to zoom in or out on a web page or Gallery image.
- To return to the previous screen, tap the **Back key** ⏪.
- Tap the **Home key** ⓪ at any time to return to the main Home screen. Press and hold the **Home key** ⓪ to access Google Assistant.
- Tap the **Recent apps key** ☐ to access recently viewed apps.
- Swipe up from the bottom of the Home screen to access applications on your phone.



Notification panel

1. Swipe down on the Status bar to open the Notification panel.
2. Swipe left or right on a notification to delete it, or tap **CLEAR ALL** to clear all event-based notifications (other ongoing notifications will remain).
3. From the Notification panel, swipe down again to access the Quick Settings panel. Tap a setting to turn it on/off, or tap **Settings** ⚙️ to access full Settings.

Personalizing Your Screen

Set your wallpaper

1. Press and hold an empty space on the Home screen and tap **Wallpapers**.
2. Select a wallpaper and tap **Set wallpaper**. Choose to set the wallpaper for the Home screen, Lock screen, or both.



Add apps and widgets

1. To add an app to the Home screen, swipe up from the bottom of the Home screen to access the Apps drawer. Press and hold an app, then drag it to any Home screen.
2. To add a widget, press and hold an empty space on the Home screen and tap **Widgets**.
3. Press and hold a widget, then drag it to the Home screen.



Organize your Home screens

1. Press and hold the app, widget, or folder.
2. Drag the item to the desired position and then release.

Create app folders

1. From the Home screen, press and hold an app, then drag it over to another app to create a folder.
2. Drag more apps to the folder to add them.
3. To name or rename the folder, open the folder, tap the title bar, and enter the desired name.

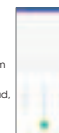
Calls and Voicemail

HD Voice capable*

Enjoy crystal-clear conversations.

Make a call

1. To make a call, tap **Phone** ☎️ from the Home screen.
2. Enter the number using the dial pad, or choose a contact from the **Contacts** 📁, **Recent** 📞, or **Favorites** ⭐️ tab and tap the number to place the call.



Check voicemail

1. From the Home screen, tap **Phone** ☎️ > **Dialer** 📞.
2. Press and hold the **1 key** 1, then follow the prompts to set up your voicemail.

Use call waiting

1. While on a call, you will hear a tone if another call comes in. Swipe up to accept and place the current call on hold, or swipe down to reject the call. The caller will be sent to voicemail.
2. Tap **☐** to merge calls or tap the other call to switch between active calls.

* To experience Cricket HD Voice, both callers must have a compatible HD Voice-capable smartphone and make the call over Cricket's LTE network or a compatible network. Cricket's LTE coverage is not equivalent to its overall network coverage. HD Voice calls made on a compatible device and on the LTE network may not experience an HD Voice connection at times of network congestion. Other carriers' networks may interoperate with Cricket's LTE network to support an HD voice call.

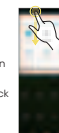


Easily Adjust Settings

Swipe up from the Home screen and tap **Settings** ⚙️.

Quick Settings

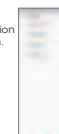
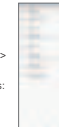
1. Swipe down from the Home screen to view the Notification panel.
2. Swipe down again to see the Quick Settings menu.
3. Tap a setting to turn it on or off.



Gesture Controls

Enable Gesture Controls

1. Swipe up on the Home screen and tap **Settings** ⚙️ > **System** ⚙️ > **Gestures** 🖐️.
2. Choose from the following options:
 - **Quick open camera:** The ability to automatically open the camera after pressing the Power key twice.
 - **System navigation:** Switch between 3-button navigation (standard) or Gesture navigation.
 - **Preventing ringing:** The ability to activate vibrate or mute when your phone rings by pressing the Power key and Volume Up key.



More Information

On the web

Detailed support information, including device specifications and troubleshooting, is available at www.cricketwireless.com/support/devices.

On the phone

- Call Call Customer Care at 1-855-246-2461 or
- Dial 611 from your cell phone.

Accessories

For more information concerning accessories, please visit your local Cricket store location or go to www.cricketwireless.com/shop/accessories.



Note: Store and online inventories may vary.

Product meets FCC Radio Frequency Exposure Guidelines- FCC ID: RYK6C1002. This device complies with Part 15 of the FCC Rules. Operation is subject to the following two conditions: (1) This device may not cause harmful interference. (2) This device must accept any interference received, including interference that may cause undesired operation. (c)2021 Cricket Wireless LLC. All rights reserved. Cricket and the Cricket logo are registered trademarks under license to Cricket Wireless LLC. Other marks are the property of their respective owners. microSDXC™ logo is a trademark of SD-3C, LLC.

Text and Picture Messaging

Send a text message

1. From the Home screen, tap **Messaging** 📧.
2. Tap **+** to create a new message or start a new group chat.
3. Type your message and tap **➤** to send the message.



Send a picture message

1. From the Home screen, tap **Messaging** 📧.
2. Tap **+** to create a new message or start a new group chat.
3. Type your message. Tap **+** to add picture files to a message. Tap **📎** to snap a photo, or touch **🖼️** to select photos or to add a voice message.
4. Type your message and tap **➤** to send the message.



Note: Please don't text and drive.

Email

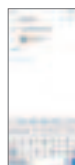
Email setup (Gmail, Yahoo!, etc.)

1. From the Home screen, tap **Gmail** 📧. Or swipe up from the bottom to open the Apps drawer to access.
2. Follow the steps to set up your account.



Create and send an email message

1. Tap **✉️** from the Inbox screen to compose a new message.
2. Enter the recipient(s) email address in the **To** field. To add a carbon copy or blind carbon copy, tap **cc**.
3. Enter the subject and content of your message. To add attachments, tap **📎** and select **Attach file**.
4. Tap **➤** to send.



Note: To set up a corporate email account, contact your IT administrator.

Cricket Services

These services make using Cricket even better and easier.

- **myCricket:** Access billing, make a quick payment, view usage and access support from the palm of your hand.
- **Visual Voicemail:** Quickly view, access, and play back your voicemail messages. Easily save important numbers and respond to messages by calling back or texting.
- **theScoop:** The Prover to score daily deals, free games and celebrity news.

Useful Features

- **Flashlight:** Swipe down from the Status bar to open the Quick Settings panel. Tap **Flashlight** 🔦 to turn it on or off.
- **Battery Saving Mode:** Swipe down on the Status bar to open the Quick Settings panel. Tap **Battery Saver** 🔋 to turn it on or off.
- **Data Saver:** Data Saver helps to reduce data usage by preventing some apps from sending or receiving data in the background. To use Data Saver, go to **Settings** ⚙️ > **Network & internet**. Tap **Data Saver** 🔄 to turn it on or off.

Apps on Google Play™

Access Google Play

1. From the Home screen, tap **Play Store** 📦.
2. Enter your existing Google™ account login or create one following the steps on the screen.



Navigate Google Play

1. Tap a category to browse apps, games, movies, and music organized by popularity or category.
2. Tap the Google Play search bar to search the Play Store for a specific game or app.
3. To install, tap the app and follow the instructions. Once installed, you will see a notification in the Notifications panel. Open the app from this notification or by locating it in the apps drawer.

Note: A payment method such as Google Wallet is required to purchase apps.

Camera and Video

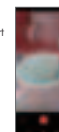
Take a picture

1. From the Home screen, tap **Camera** 📷.
2. Position the object or landscape in the viewfinder.
3. Tap **📷** to take the picture. It will be automatically saved to **Photos** 📁.



Make a video

1. Touch **Video** and tap **📷** in the bottom center of the screen to start recording a video.
2. Tap **🛑** to stop recording. The video will be automatically saved.



Share a picture or video

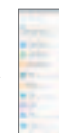
1. From the Home screen, tap **Photos** 📁.
2. Tap a photo or video, and then tap **Share** ➦ and select an option for sharing.



Connect Wi-Fi & Bluetooth

Connect to Wi-Fi Network

1. From the Home screen, swipe up to access Apps and tap **Settings** ⚙️.
2. Tap **Network & internet** 🌐 > **Wi-Fi**.
3. Tap **Use Wi-Fi** and select a Wi-Fi network to connect.
4. Enter the password and then tap **CONNECT**.



Use Bluetooth

1. From the Home screen, swipe up to access Apps and tap **Settings** ⚙️.
2. Tap **Connected devices** 📶 > **Connection preferences** > **Bluetooth** 🔌 > **Pair new device**.
3. Select a device to pair. When confirm message shows up tap **PAIR**.



AT&T Maestro® Max



Let's get started



AT&T Eco Rating 2.0 only applies to <Device Name>. For limited factors evaluated visit att.com/ecospace. Wireless Emergency Alerts is a registered Trademark and Service Mark of CTIA.

<Insert third party and Manufacturer trademark statements here.> LTE is a trademark of ETSI. 4G LTE not avail. everywhere. Contains <battery type> battery - recycle or dispose of properly. © 2019 AT&T Intellectual Property. All rights reserved. AT&T, the AT&T logo and all other AT&T marks contained herein are trademarks of AT&T Intellectual Property. All other marks are the property of their respective owners.

Printed in USA

<OEM Part #>

What is in the box?

- AT&T Maestro® Max Smartphone
- Terms of service
- Charger
- USB Type-C cable
- SIM card
- SIM card tray pin
- Quick start guide
- Safety information guide

Connect Wi-Fi & Bluetooth

Connect to Wi-Fi Network

1. From the Home screen, swipe up to access Apps and tap **Settings**.
2. Tap **Network & internet** > **Wi-Fi**.
3. Tap **Use Wi-Fi** and select a Wi-Fi network to connect.
4. Enter the password and then tap **CONNECT**.

Use Bluetooth

1. From the Home screen, swipe up to access Apps and tap **Settings**.
2. Tap **Connected devices** > **Connection preferences** > **Bluetooth** > **Pair new device**.
3. Select a device to pair. When confirm message shows up tap **PAIR**.



Easily Adjust Settings

Swipe up from the Home Screen and tap **Settings**.

Quick Settings

1. Swipe down from the Home screen to view the Notification panel.
2. Swipe down again to see the Quick Settings menu.
3. Tap a setting to turn it on or off.



Notification panel

1. Swipe down on the Status bar to open the Notification panel.
2. Swipe left or right on a notification to delete it, or tap **CLEAR ALL** to clear all event-based notifications (other ongoing notifications will remain).
3. From the Notification panel, swipe down again to access the Quick Settings panel. Tap a setting to turn it on/off, or tap **Settings** to access full Settings.

Gesture Controls

Enable Gesture Controls

1. Swipe up on the Home screen and tap **Settings** > **System** > **Gestures**.
2. Choose from the following options:
 - **Quick open camera:** The ability to automatically open the camera after pressing the Power key twice.
 - **System navigation:** Switch between 3-button navigation (standard) or Gesture navigation.
 - **Prevent ringing:** The ability to activate vibrate or mute when your phone rings by pressing the Power key and Volume Up key.



Useful Apps*



myAT&T

Keep track of your wireless and Internet data usage, upgrade your phone or plan, and view/pay your bill in the app.



AT&T Smart Wi-Fi

Helps you make your data plan last longer. Remembers and connects to your favorite hotspots and finds more Wi-Fi options when you're on the go.



Visual Voicemail

Receive voicemail messages in an email-like inbox. You can easily play and delete messages, return calls, and manage voicemail features.



HBO Max

Stream the HBO you love, with even more great TV and movies, plus new Max Originals you can't wait to see.

Find More Information

Manage Your Account with myAT&T

- On your phone: **Apps** > **myAT&T**
- On the web: att.com/myATT



Compatible device and online account required. Data and messaging rates may apply for download and app usage.

Need More Help?

- On your phone: **Apps** > **AT&T** > **Device Help**
- On the web: att.com/DeviceHowTo



Give us a Call

- 611 from any AT&T wireless phone
- 800.331.0500 or prepaid 800.901.9878

Fingerprint Sensor

Setting Fingerprint After Setup

1. Swipe up on the Home Screen and tap **Settings** > **Security** > **Fingerprint**.
2. Choose your backup screen lock method: PIN, password, or pattern.
3. Follow prompts to set up fingerprint unlock.



Useful Features

Quick Settings

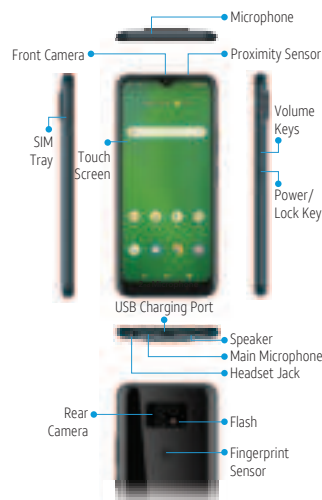
- **Flashlight:**
 - Swipe down from the Status bar to open the Quick Settings panel.
 - Tap **Flashlight** to turn it on or off.
- **Battery Saving Mode:**
 - Swipe down on the Status bar to open the Quick Settings panel.
 - Tap **Battery Saver** to turn it on or off.
- **Data Saver:**
 - Data Saver helps to reduce data usage by preventing some apps from sending or receiving data in the background.
 - To use Data Saver, go to **Settings** > **Network & internet**.
 - Tap **Data Saver** to turn it on or off.

Create app folders

1. From the Home screen, press and hold an app, then drag it over to another app to create a folder.
2. Drag more apps to the folder to add them.
3. To name or rename the folder, open the folder, tap the title bar, and enter the desired name.

*Compatible device and subscription may be required. Data and messaging rates may apply. Restrictions and limitations may apply. For more app information, go to <https://att.com/shop/apps>.

Your New Phone



Setting Up Your Phone

Install a SIM/microSD card*

1. Insert the SIM Card Tray Pin into the card tray slot and remove the SIM card tray.
2. Place the Nano SIM card and microSD card (Not included) into the tray.
3. Gently slide the card tray back into the slot.



Charge using the AC Adaptor

1. Connect one end of the data cable to the USB port located on the bottom of your phone.
2. Connect the other end to the power adaptor.
3. Connect the power adaptor to an electrical outlet to fully charge your phone.

* WARNING!

To avoid damage to the phone, do not use any other kind of SIM card or any non-standard Nano SIM card cut from a SIM card. You can get a standard Nano SIM card from your service provider.

Connect Wi-Fi & Bluetooth

Connect to Wi-Fi Network

- Swipe up on the screen to unlock.
- Use your fingertip to lightly tap the screen.
- Use quick flicks of your finger on the touch screen to swipe up, down, left and right.
- Spread two fingers apart or pinch them together on the screen to zoom in or out on a web page or Gallery image.
- To return to the previous screen, tap the **Back key** ◀.
- Tap the **Home key** ○ at any time to return to the main Home screen. Press and hold the **Home key** ○ to access Google Assistant.
- Tap the **Recent apps key** □ to access recently viewed apps.
- Swipe up from the bottom of the Home screen to access applications on your phone.



Personalizing Your Screen

Set your wallpaper

1. Press and hold an empty space on the Home screen and tap **Wallpapers**.
2. Select a wallpaper and tap **Set wallpaper**. Choose to set the wallpaper for the Home screen, Lock screen, or both.



Add apps and widgets

1. To add an app to the Home screen, swipe up from the bottom of the Home screen to access the Apps drawer. Press and hold an app, then drag it to any Home screen.
2. To add a widget, press and hold an empty space on the Home screen and tap **Widgets**.
3. Press and hold a widget, then drag it to the Home screen.

Organize your Home screens

1. To add an app to the Home screen, swipe up from the bottom of the Home screen to access the Apps drawer. Press and hold an app, then drag it to any Home screen.
2. Press and hold a widget, then drag it to the Home screen.

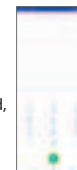
Calls and Voicemail

HD Voice capable*

Enjoy crystal-clear conversations.

Make a call

1. To make a call, tap **Phone** ☎ from the Home screen.
2. Enter the number using the dial pad, or choose a contact from the **Contacts** 👤, **Recent** 📞 or **Favorites** ⭐ tab and tap the number to place the call.



Check voicemail

1. From the Home screen, tap **Phone** ☎ > **Dialer** 📞.
2. Press and hold the 1 key 1, then follow the prompts to set up your voicemail.



Use call waiting

1. While on a call, you will hear a tone if another call comes in. Swipe up to accept and place the current call on hold, or swipe down to reject the call. The caller will be sent to voicemail.
2. Tap ■ to merge calls or tap the other call to switch between active calls.

* To experience HD Voice, both callers must have a compatible HD Voice-capable smartphone and make the call over LTE network or a compatible network.

Text and Picture Messaging

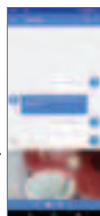
Send a text message

1. From the Home screen, tap **Messaging** ✉.
2. Tap + to create a new message or start a new group chat.
3. Type your message and tap ➡ to send the message.



Send a picture message

1. From the Home screen, tap **Messaging** ✉.
2. Tap + to create a new message or start a new group chat.
3. Type your message. Tap 📷 to snap a photo, or touch 🖼 to select photos or to add a voice message.
4. Type your message and tap ➡ to send the message.



Note: Please don't text and drive.

Email

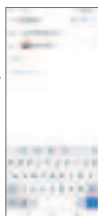
Email setup (Gmail, Yahoo!, etc.)

1. From the Home screen, tap **Gmail** 📧. Or swipe up from the bottom to open the Apps drawer to access.
2. Follow the steps to set up your account.



Create and send an email message

1. Tap ✉ from the Inbox screen to compose a new message.
2. Enter the recipient(s) email address in the **To** field. To add a carbon copy or blind carbon copy, tap **cc**.
3. Enter the subject and content of your message. To add attachments, tap 📎 and select **Attach file**.
4. Tap ➡ to send.



Note: To set up a corporate email account, contact your IT administrator.

Apps on Google Play™

Access Google Play

1. From the Home screen, tap **Play Store** 📦.
2. Enter your existing Google™ account login or create one following the steps on the screen.



Navigate Google Play

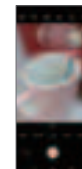
1. Tap a category to browse apps, games, movies, and music organized by popularity or category.
2. Tap the Google Play search bar to search the Play Store for a specific game or app.
3. To install, tap the app and follow the instructions. Once installed, you will see a notification in the Notifications panel. Open the app from this notification or by locating it in the apps drawer.

Note: A payment method such as Google Wallet is required to purchase apps.

Camera and Video

Take a picture

1. From the Home screen, tap **Camera** 📷.
2. Position the object or landscape in the viewfinder.
3. Tap ○ to take the picture. It will be automatically saved to **Photos** 📁.



Make a video

1. Touch **Video** and tap ● in the bottom center of the screen to start recording a video.
2. Tap ● to stop recording. The video will be automatically saved.



Share a picture or video

1. From the Home screen, tap **Photos** 📁.
2. Tap a photo or video, and then tap **Share** ➦ and select an option for sharing.

Fun Camera Modes

Portrait

Artistically blur the background of your photo.



Beauty

Smooth imperfections for better selfies.

