



PYLE
PyleUSA.com



PGMC3WPS4
PS4 Game Console Handle Wireless Controller
with LED Lights, Built-in Speaker 6-Axis Sensor

USER GUIDE

DESIGNED FOR PS4

Please read this instruction manual before using the unit. Please keep it for future reference.

Contents:

- 1*PS4 wireless Controller
- 1*Changing Cable
- 1"User Manual



A complete guide for beginners to pair and operate

There are two pairing method for this product:

Wireless BT pairing and wired direct connection (data cable included can also be used charging cable)

Wireless Pairing on PS4 Operation Steps

1. Using the **PGMC3WPS4** controller on Playstation 4 console for the first time, connect the **PGMC3WPS4** controller to the console using USB cable included to complete device registration. The **PGMC3WPS4** controller will connect to the Playstation 4 console automatically in the future.
2. Press "**SHARE+HOME KEY**" simultaneously for 2 seconds, blue light will flash quickly, now you can pair the controller with the console.
3. If it still does not work, you may need to restart it or charge it fully.

Wired Operation Steps

PC can be connected directly with the data cable.

The driver will install automatically (The wireless connection also supports PS3, but does not support mobile phones, TV Box).

How To Use the Wing Button

1. The four-wing buttons on the back can replace the function of any button within 1, 2, 4, 3.
2. **First, make sure to format the controller first with this process:**
 - Press the share and any wing button together, then release the wing button and share button in sequence (wing button must be released first).
3. **Now you can set any button you want to be replaced by the wing button with this process:**
 - Press the share and any button within 1, 2, 4, 3 then press any wing button, finally release the wing button first then other buttons. The setting will be successfull.

① L1 L2 PC MODE

③ ACTION KEYS

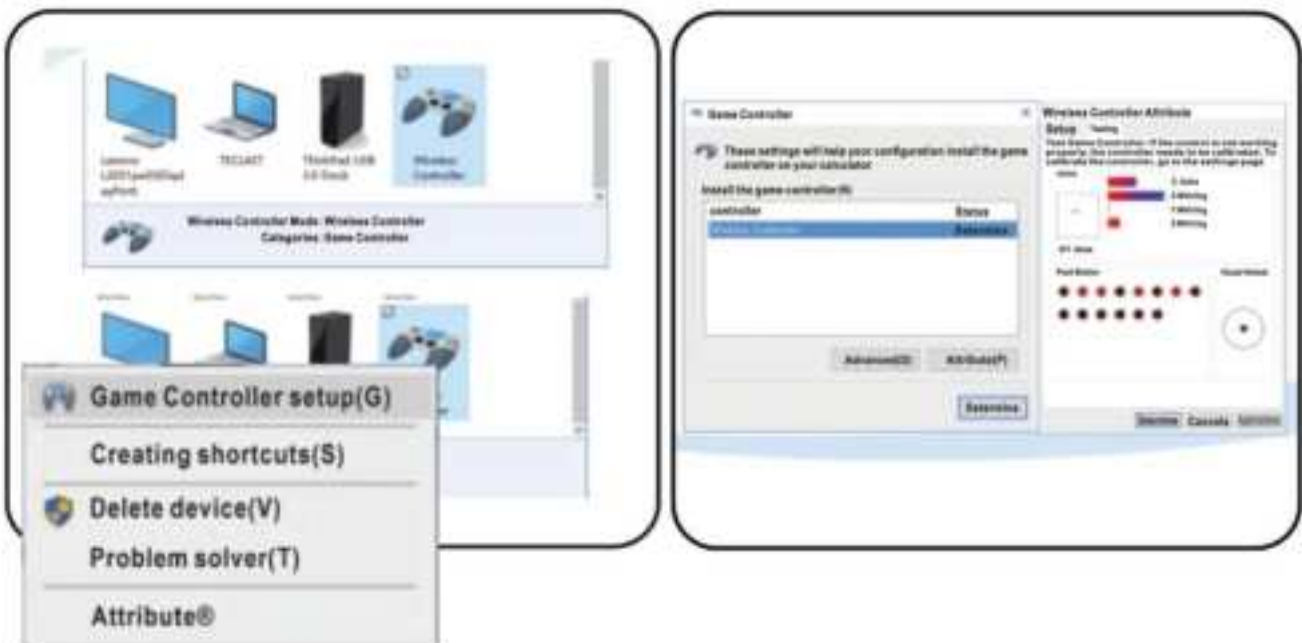
② R1 R2 PC MODE

④ ARROW KEY



How To Use The Wing Button

- Those four wing buttons on the back can replace the function of any button within 1, 2, 4, 3.
- Make sure to format the controller first with this process.
- Press the share and any wing button together, then release the wing button and share button in sequence.
(wing button must be released at first)
- Now you can set any button you want to be replaced by the wing button with this process.
- Press the share and any button within 1, 2, 4, 3, then press any wing button, finally release the wing button first then other buttons, the setting will be successful.







California Prop 65 Warning

WARNING:

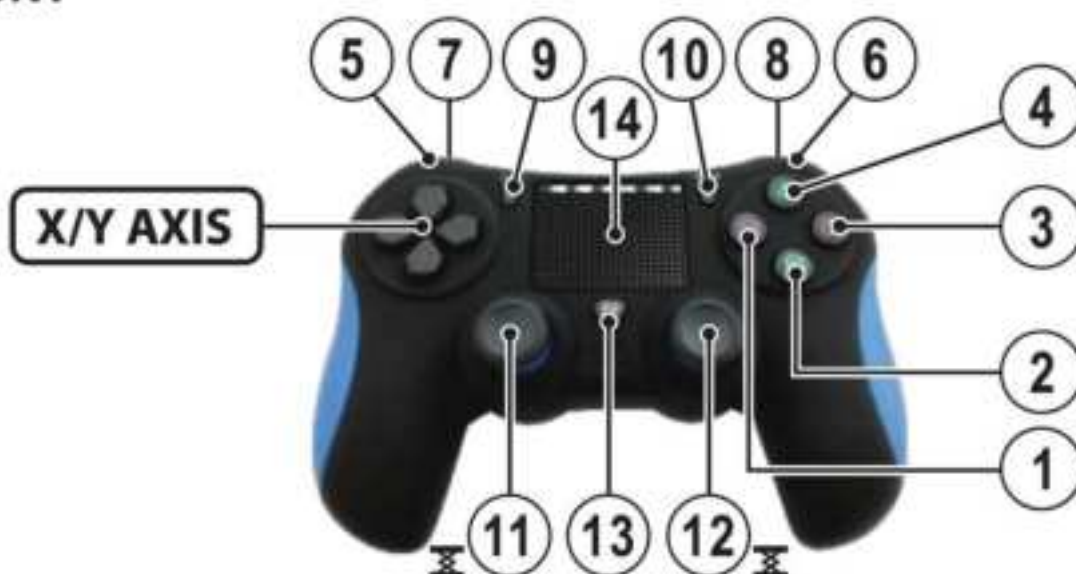
This product contains Nickel carbonate which is known to the state of California to cause cancer birth defects and other reproductive harm. Do not ingest.

For more info go to: www.P65warnings.ca.gov

Controller button corresponding table

| PS4 |  |  |  |  | L1 | R1 | L2 | R2 | share | option | L3 | R3 | P4 | T- PAD | |
|-----|---|---|---|---|----|----|----|----|-------|--------|----|----|----|--------|----|
| PC | F | 1 | 2 | 3 | 4 | 5 | 6 | 7 | 8 | 9 | 10 | 11 | 12 | 13 | 14 |
| | B | ←----- REMAPPING PADDLE -----→ | | | | | | | | | | | | | |

FRONT



BACK



- **Set up the remapping paddle of the program:**
Press and hold any of the remapping paddle and plus "SHARE" key, press the function key you want to set (hold and hold do not release) at the mean time; and then release the remapping paddle which you want to set before releasing the other keys, set up successfully and save the settings function automatically.
- **Cancel the remapping paddle of the program:**
When you press any remapping paddle and plus the "SHARE" key at the meantime, the last programming function will be canceled.

PYLE

PyleUSA.com



VISIT US ONLINE:

Have a question?

Need service or repair?

Want to leave a comment?

PyleUSA.com/ContactUs

PYLE

Questions? Issues?

We are here to help!

Phone: (1) 718-535-1800

Email: support@pyleusa.com

FCC Warning Statement

Changes or modifications not expressly approved by the party responsible for compliance could void the user's authority to operate the equipment.

This equipment has been tested and found to comply with the limits for a Class B digital device, pursuant to Part 15 of the FCC Rules.

These limits are designed to provide reasonable protection against harmful interference in a residential installation.

This equipment generates uses and can radiate radio frequency energy and, if not installed and used in accordance with the instructions, may cause harmful interference to radio communications.

However, there is no guarantee that interference will not occur in a particular installation. If this equipment does cause harmful interference to radio or television reception, which can be determined by turning the equipment off and on, the user is encouraged to try to correct the interference by one or more of the following measures:

- Reorient or relocate the receiving antenna.
- Increase the separation between the equipment and receiver.
- Connect the equipment into an outlet on a circuit different from that to which the receiver is connected.
- Consult the dealer or an experienced radio/TV technician for help.

This device complies with part 15 of the FCC Rules. Operation is subject to the following two conditions:

(1) This device may not cause harmful interference, and(2) this device must accept any interference received, including interference that may cause undesired operation.

The device has been evaluated to meet general RF exposure requirement.



FCC Warning Statement