


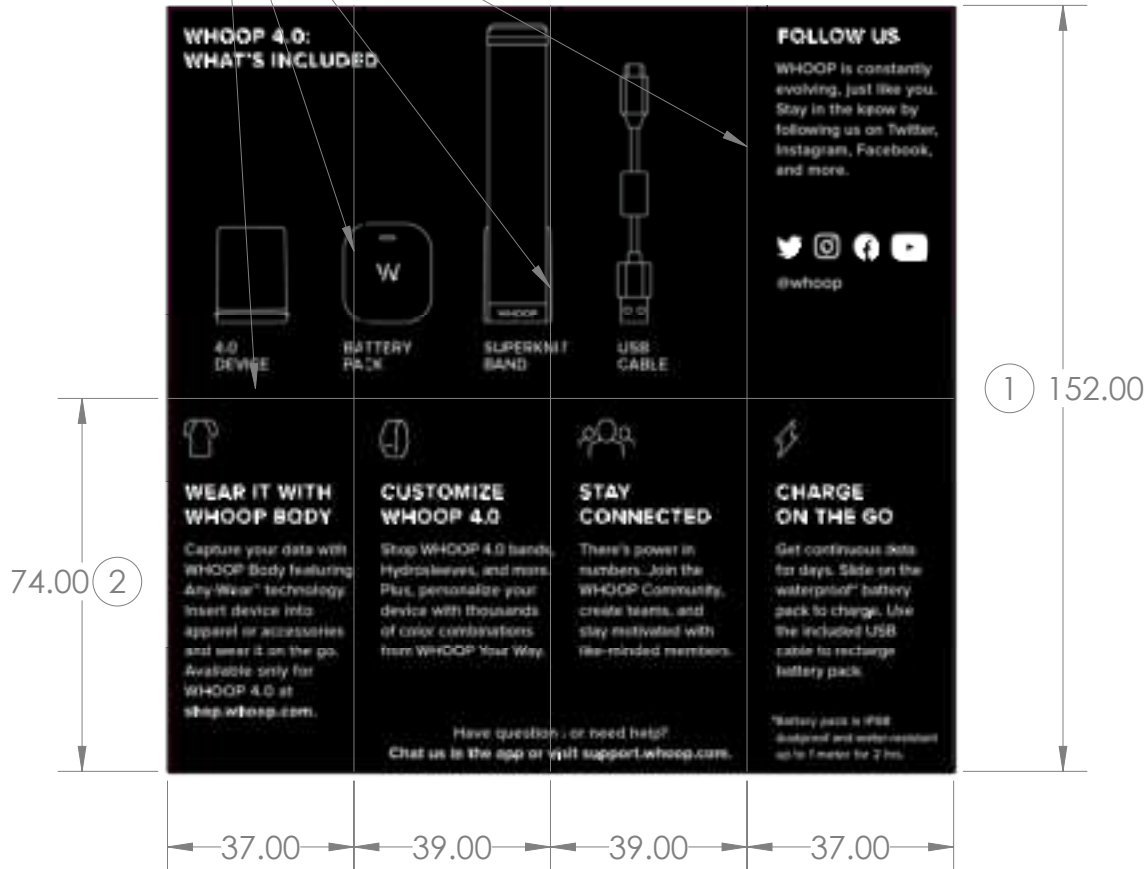
NOTES:

1. THIS DRAWING IS BASED ON MODEL FILE 452-005-00
2. MATERIAL: 120GSM PAPER
3. FINISH: MATTE FINISH
PRINT OUTSIDE IN FULL COLOR
4.  DENOTES CRITICAL TO QUALITY DIMENSIONS

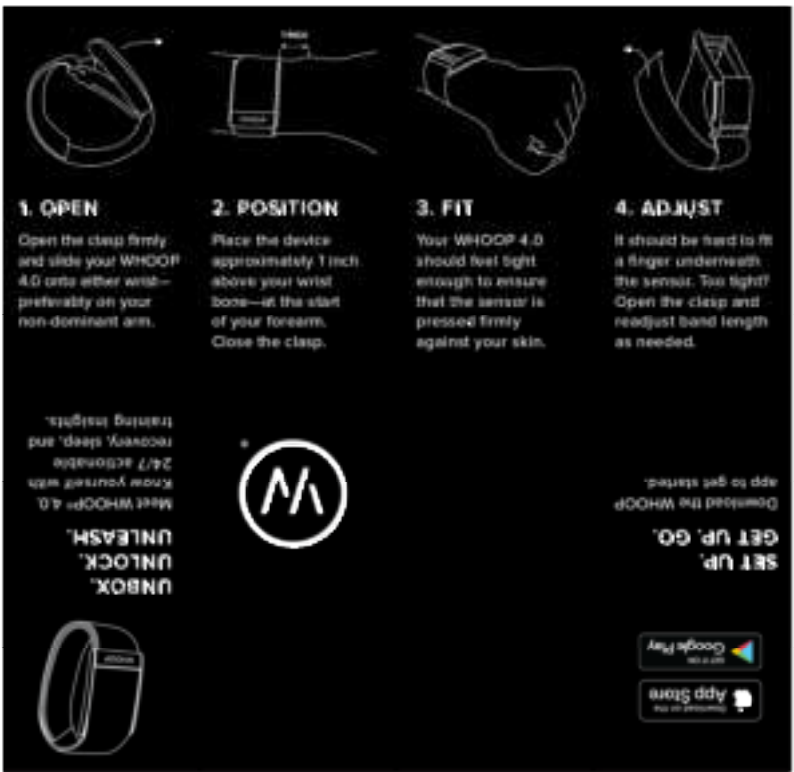
REVISIONS	
REV.	DESCRIPTION
B	ECO - 000325

FOLD LINES

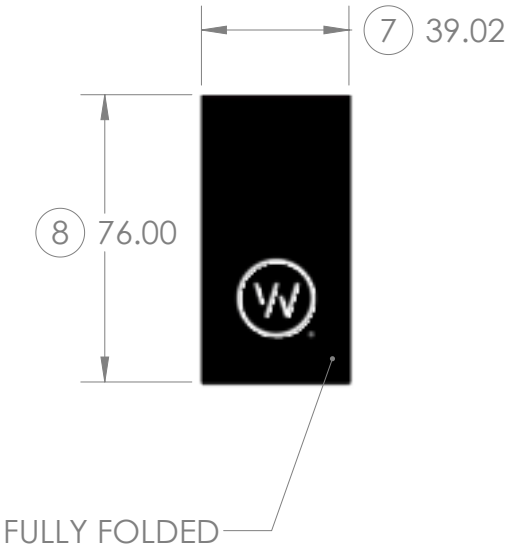
9 0.20



FRONT SIDE



BACK SIDE



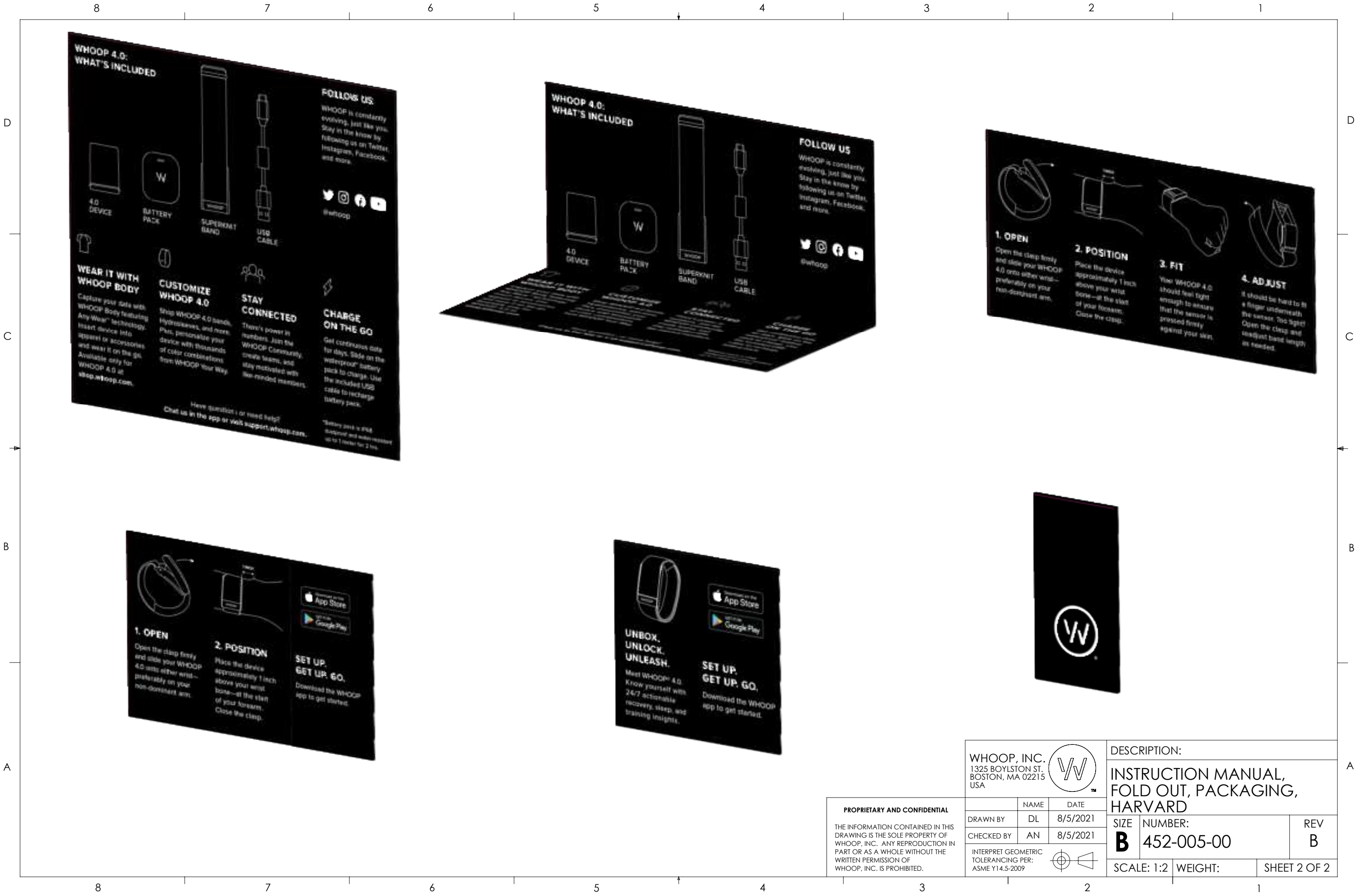
FULLY FOLDED

PROPRIETARY AND CONFIDENTIAL
THE INFORMATION CONTAINED IN THIS DRAWING IS THE SOLE PROPERTY OF WHOOP, INC. ANY REPRODUCTION IN PART OR AS A WHOLE WITHOUT THE WRITTEN PERMISSION OF WHOOP, INC. IS PROHIBITED.

UNLESS OTHERWISE SPECIFIED
LINEAR:
X ± 0.75
X.X ± 0.25
X.XX ± 0.13
ANGLE:
X.X° = ± 0.5°
SURFACE:
32/
REMOVE ALL BURRS & SHARP EDGES

UNLESS OTHERWISE SPECIFIED
ALL DIMENSIONS ARE IN MM
MATERIAL 2.
FINISH 3.
DO NOT SCALE DRAWING

WHOOP, INC. 1325 BOYLSTON ST. BOSTON, MA 02215 USA			DESCRIPTION: INSTRUCTION MANUAL, FOLD OUT, PACKAGING, HARVARD		
DRAWN BY	DL	DATE	8/5/2021	SIZE	NUMBER:
CHECKED BY	AN	DATE	8/5/2021	B	452-005-00
INTERPRET GEOMETRIC TOLERANCING PER: ASME Y14.5-2009			SCALE: 1:2	WEIGHT:	SHEET 1 OF 2



WHOOP, INC. 1325 BOYLSTON ST. BOSTON, MA 02215 USA			DESCRIPTION: INSTRUCTION MANUAL, FOLD OUT, PACKAGING, HARVARD		
	NAME	DATE	SIZE	NUMBER:	REV
DRAWN BY	DL	8/5/2021	B	452-005-00	B
CHECKED BY	AN	8/5/2021			
INTERPRET GEOMETRIC TOLERANCING PER: ASME Y14.5-2009			SCALE: 1:2	WEIGHT:	SHEET 2 OF 2

PROPRIETARY AND CONFIDENTIAL

THE INFORMATION CONTAINED IN THIS DRAWING IS THE SOLE PROPERTY OF WHOOP, INC. ANY REPRODUCTION IN PART OR AS A WHOLE WITHOUT THE WRITTEN PERMISSION OF WHOOP, INC. IS PROHIBITED.