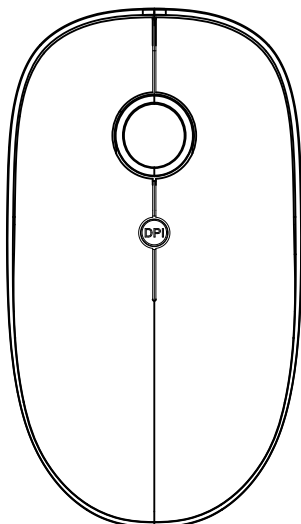


## USER MANUAL

### DC-0375



2.4G  
CONNECTIVITY



SILENT CLICKS  
AND SCROLLING

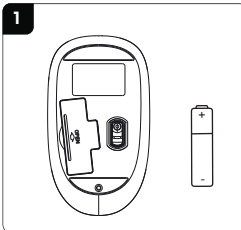


COMPACT  
& PORTABLE

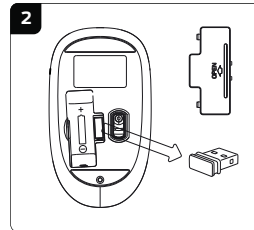


BATTERY  
IS INCLUDED

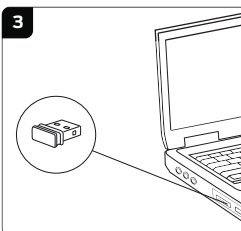
## Quick Start Guide



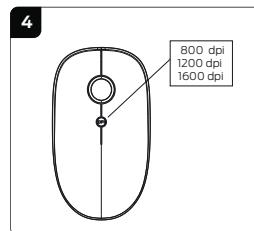
Pull the protective battery tab



Open the battery cover to take out the mini receiver. Store inside when not in use



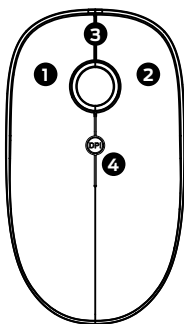
Connect the mini receiver to the computer USB port



Select one DPI fit for you

Attention: Please remove the protective film on the foot pad before using

## Quick Style Guide



### Specs:

Distance: 10m  
Voltage: 1.5V  
Current: 15mA  
Mouse size: 113\*64\*32mm  
Working current=15mA  
Mouse resolution: 800/1200/1600DPI  
Mouse rate of return: 250Hz

### Key functions:

1. Left key
2. Right key
3. Scroll Wheel
4. DPI Button

### Package includes:

- (1) Wireless Mouse, (1) AAA Battery, (1) USB Nano Receiver, (1) User Manual

### Compatibility:

Compatible with Mac or PC.

## FCC Statement

This device complies with part 15 of the FCC Rules. Operation is subject to the following two conditions:

- (1) This device may not cause harmful interference, and
- (2) this device must accept any interference received, including interference that may cause undesired operation.

NOTE: This equipment has been tested and found to comply with the limits for a Class B digital device, pursuant to Part 15 of the FCC rules. These limits are designed to provide reasonable protection against harmful interference in a residential installation. This equipment generates, uses and can radiate radio frequency energy and, if not installed and used in accordance with the instructions, may cause harmful interference to radio communications. However, there is no guarantee that interference will not occur in a particular installation. If this equipment does cause harmful interference to radio or television reception, which can be determined by turning the equipment off and on, the user is encouraged to try to correct the interference by one or more of the following measures:

- Reorient or relocate the receiving antenna.
- Increase the separation between the equipment and receiver.
- Connect the equipment into an outlet on a circuit different from that to which the receiver is connected.
- Consult the dealer or an experienced radio/TV technician for help.

CAUTION: Changes or modifications not expressly approved by the party responsible for compliance could void the user's authority to operate the product.

This equipment complies with FCC radiation exposure limits set forth for an uncontrolled environment.

2023 © Monster and the M Monster logo are trademarks or registered trademarks that are used under license of Monster, Inc. All rights reserved. Manufactured, marketed and distributed by Lifeworks Technology Group LLC, under license. New York, NY 10018. All other trademarks are property of their respective owners. Made in China.

website: [www.monsterstore.com](http://www.monsterstore.com)

support: [support@monsterstore.com](mailto:support@monsterstore.com)