

SMART FLOOR LAMP

user manual



Smart floor lamp user manual

Thank you for your choice. Please read the user manual carefully and keep it for future reference.

Correct installation is required, please follow the instructions step by step. After installation, this smart floor lamp can be controlled by APP or touch-sensitive button on the lamp.

Specification

| | |
|-------------------|-----------------------------|
| Model | LDD-25W-C / LDD-25W-D |
| Wattage | 25W |
| Dimension | Ø25×168cm |
| Input Voltage | 100-240V AC ,50/60Hz |
| Color Temperature | 2700K-6500K |
| Max Luminous Flus | MAX. 2000 lm |
| Beam Angle | 160 deg |
| Protection Rating | IP20 |
| Controlled By | Voice/ APP/ Touch |
| Color | 2700K-6500K White+ RGB |
| Material | Plastic; Cast iron hardware |

Before Assembly

1. Inspect lamp before beginning assembly. Wire connections have been made at the factory and the lamp is ready for assembly.
2. Remove all packing materials from the lamp.
3. To prevent bad connections, avoid pulling wiring connections when removing contents from package or during installation.
4. Lay out all the parts on a flat surface.
5. The floor lamp consists of seven parts: 1×Lamp Head, 4×Pole, 1×Lamp Base, 1×Electric Wire with Adapter (Refer to illustration).

Assembly Instruction

1. Place the lamp base on flat surface, then screw each two parts clockwise in order.

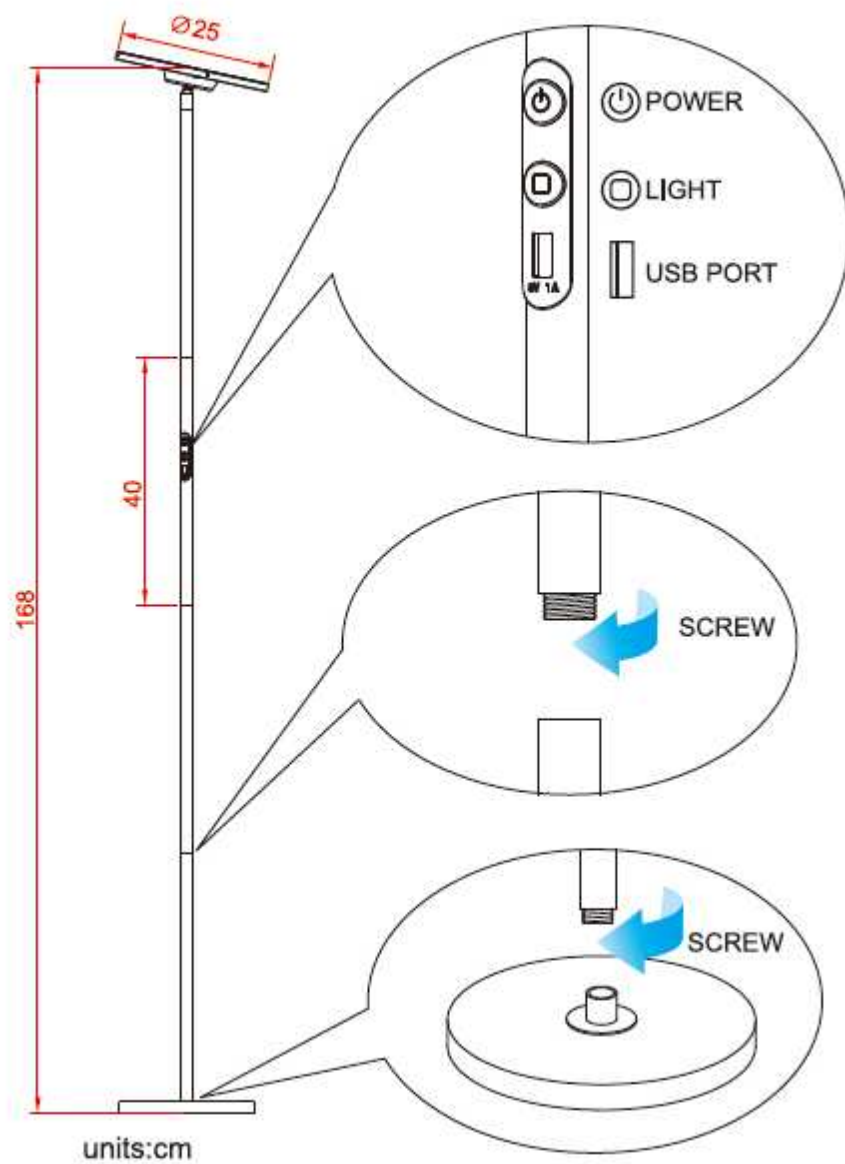
Note:

- Please take care not to pinch or damage the wires.
- For better installation, please tighten the bottom pole and lamp base firstly.
- Make sure each section of tubes are tightened.

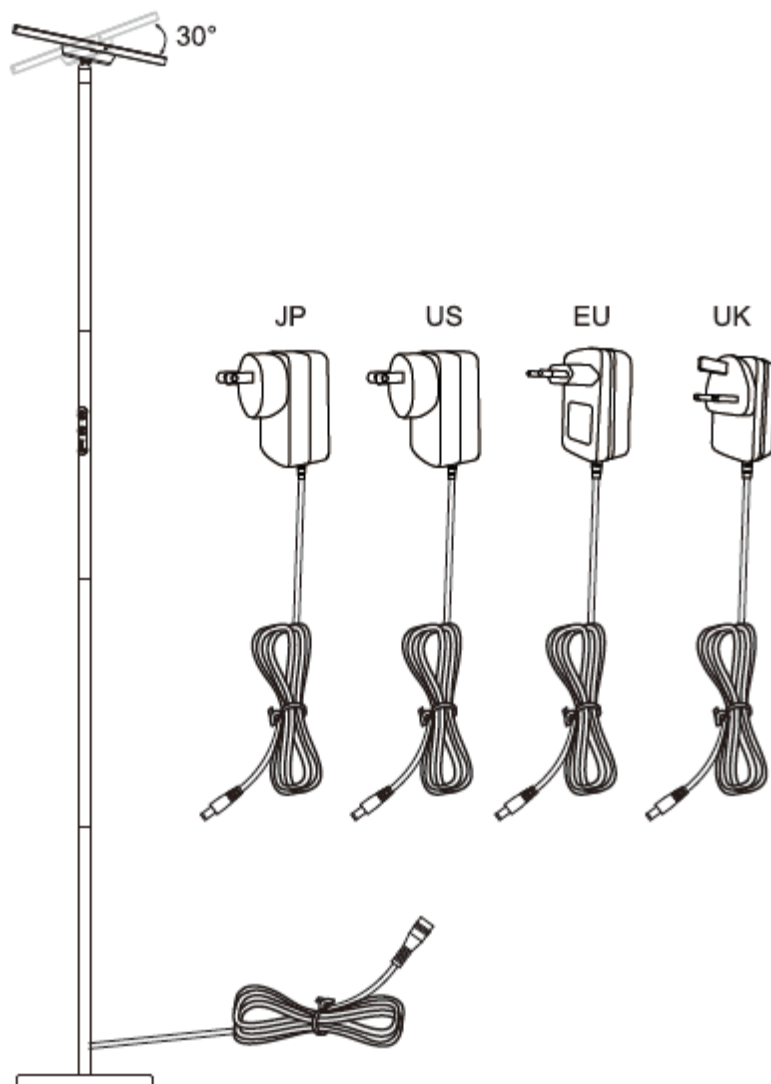
2. Plug adapter into outlet and now the lamp is ready for use.

Adjustment

For best performance, please adjust the lamp position to directly above your area of reading/working.



30 ° up/ down adjustable



PART One : Download the App

Step A: Smart Life app installation

Please choose either way below to download and install the app.

1. As per your phone system, choose the QR code to scan.



iOS



Android

2. Search keyword 'Smart Life' in Apple Store or Google Play.

Step B: Create an account on Smart Life and login.

Note: Please keep your account and password in mind for Alexa or Google Assistant App pairing later.

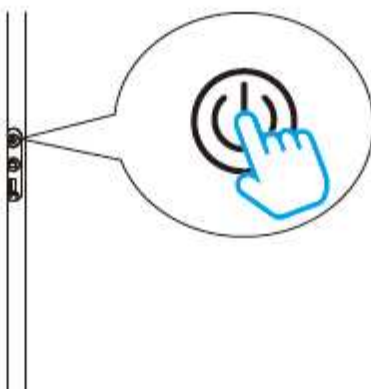
Part Two: Pair the smart floor lamp to " Smart Life" App

1. TURN INTO PAIRING MODE (2 options)

- Short touch the Power button 5times(ON/OFF/ON/OFF/ON), the lamp will flash rapidly and then flash slowly 3times.

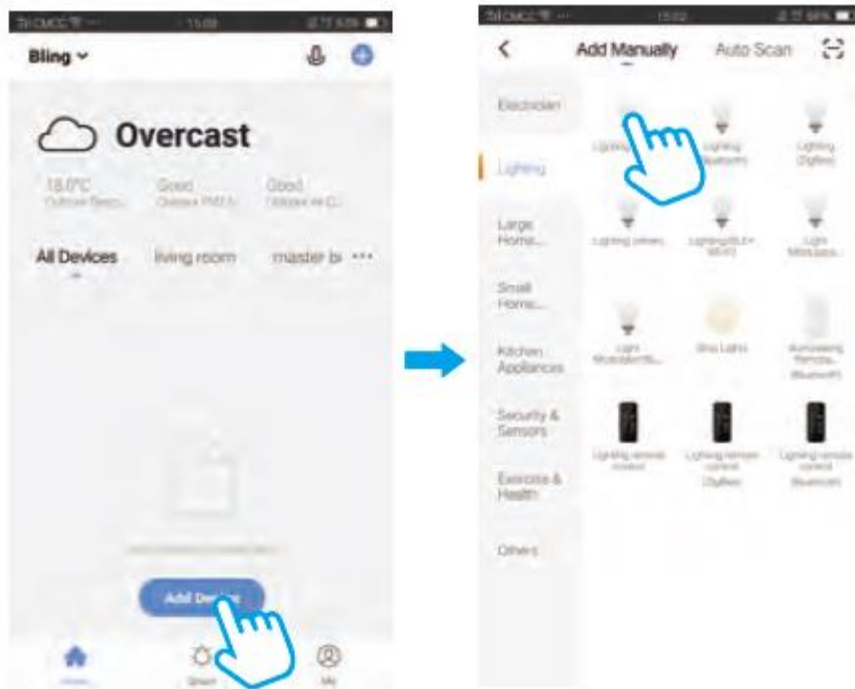
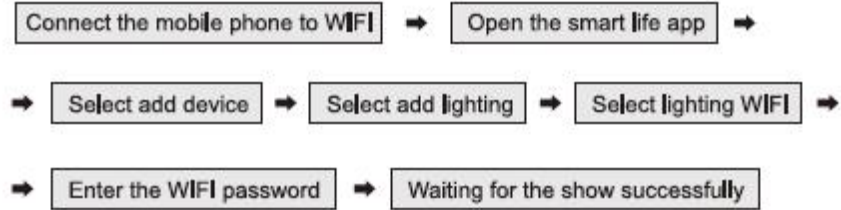


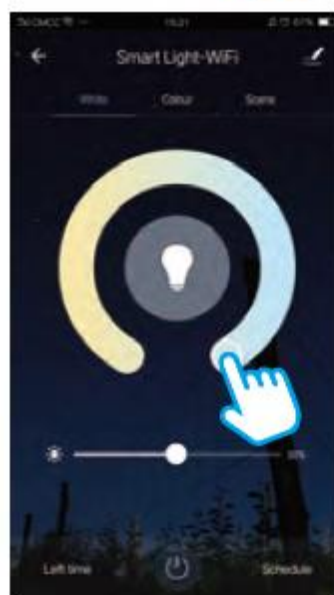
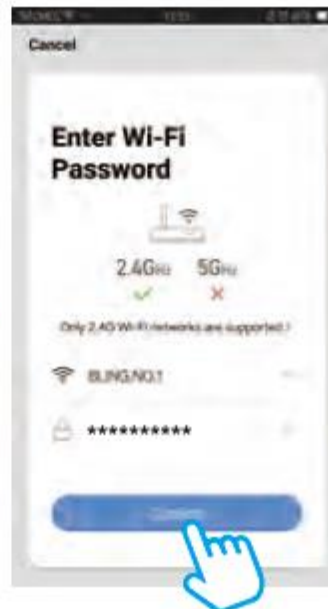
- Long touch the Power button for 5 seconds ,the lamp will flash rapidly and then flash slowly 3times.



NOTES: the lamp will automatically drop out pairing mode if no any mobile devices connected within 5minutes.

English



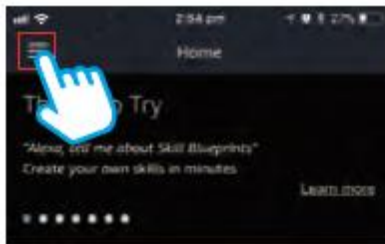


✕ If you want to explore AP Mode, you can tap 'AP Mode' on top right corner, and follow the detailed instructions by tapping 'view help' on the next page.

Part Three - How to control the light with Amazon Alexa?

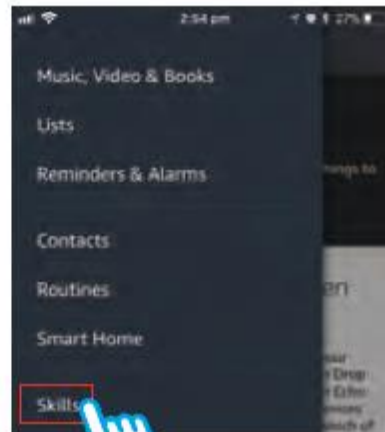
Please make sure that your Alexa app is connected to Echo, and both work well under your WiFi network.

Step A : Log in your Alexa App, tap top left corner, and tap 'skills'.

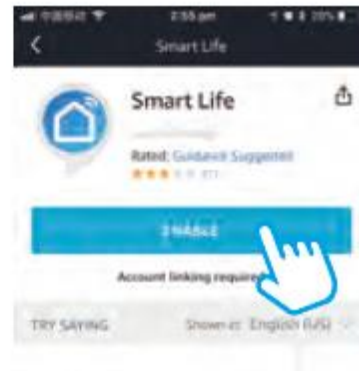
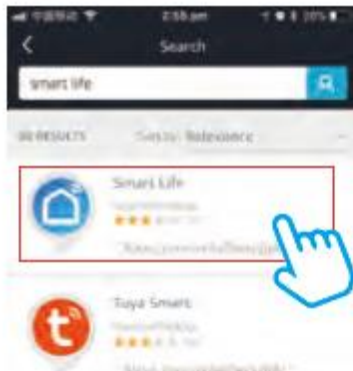


Your Alexa settings have been updated

Household Drop In was enabled from one of your Echo devices or from the Alexa app. The opt-in Drop In feature lets you automatically connect to an Echo device for a voice or a video chat. Your Echo devices with a screen and the Alexa app will indicate which of



Step B : Type 'Smart Life', find 'Smart Life' from the search result and tap it to enable the skill.



English

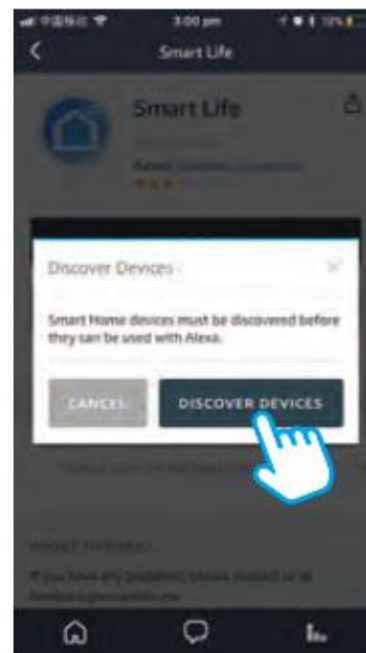
Step C : Enter your Smart Life App account and password. Tap 'Link Now', then tap 'Authorize' on the next page to bind Smart Life account to Alexa.

Step D : When your Smart Life account is bound to Alexa, tap 'DISCOVER DEVICES' to detect the light.

Step C



Step D



Step E : When the named light is paired to Alexa from Smart Life, it will show on the device page (see the 'smart light' example).

English

Step F : Now you can control the light with Alexa App on the setting page. To turn on or off the light, simply tap the bulb icon.

Step G : You can also voice control the light with Alexa by giving these commands: "Alexa, turn on 'device name' ", "Alexa, set 'device name' to 'color' ", "Alexa, set 'device name' to 'number' ". Device name is the one you give to the light. The light is named 'smart light' in this user guide. For example, "Alexa, turn on 'smart light' ", "Alexa, set 'smart light' to 'blue' " etc.



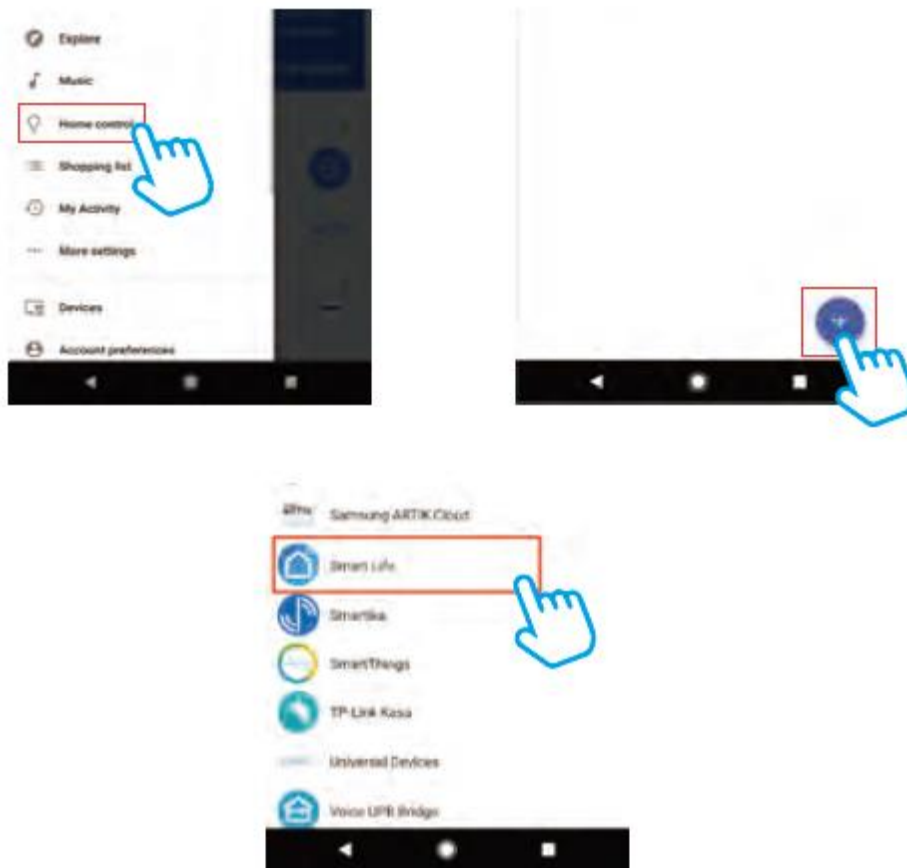
Note: To control the light with Google Assistant, please continue to read Part Four.

Part Four - How to control the light with Google Assistant?

Step A : Login Google Assistant App, tap 'Home Control' on the left side bar page.

Step B : Tap '+' button on the bottom right to enter next page.

Step C : Find 'Smart Life' from side bar list.



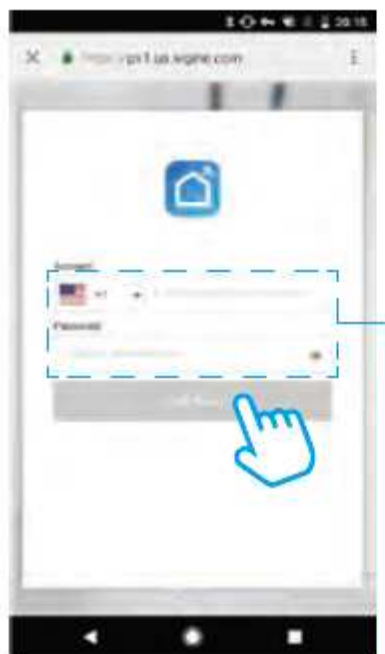
English

Step D : Enter your Smart Life App account and password to bind Smart Life account to Google Assistant.

Step E : You will find the named light shows on the Home Control page. Now you can control the light on Google Assistant App, or voice control it by giving these commands: "ok Google, turn on 'device name' ", "ok Google, set 'device name' to 'color' ", "ok Google, set 'device name' to 'number' ".

Device name is the one you give to the light. The light is named 'smart light' in this user guide. For example, "ok Google, turn on 'smart light' ", "ok Google, set 'smart light' to 'blue' " etc.

Step D



Same account and password
as Smart Life App

Step E



Key Function**Power button**

1. Short touch: Power ON or OFF 2. Long touch: Pairing.

**Light button**

1. Short touch to switch color 2. long touch to dim brightness.

| Short press | Light | Brightness | Function |
|-------------|--------|------------|--|
| 1 | white | 50% | long press 1s to adjust the brightness |
| 2 | warm | 50% | |
| 3 | blue | 50% | |
| 4 | green | 50% | |
| 5 | red | 50% | |
| 6 | pink | 50% | |
| 7 | orange | 50% | |
| 8 | purple | 50% | |
| 9 | party | 50% | |
| 10 | fade | 50% | |


**5V/1A provided by USB**

Do not exceed the Max. output 5V/1A, or it will cause the buttons out of work.

WARNING:


 Cut off the power before installation.

 Keep it away from flammables and fire source.


 Replaceing and clean to avoid electricity touched.


 Lamp is operated in dimming circuit

 Keep it away from water.

 Assemable the lamp according to the instructions and do not rebuild.

 Do not stare at the lamp for a long time.

 Assemble,take apart or move the lamp gently.

 Please do not cover anything on the lamp head and avoid bending and bumping the lamp pole.

 Keep it away from children.

FCC Statement

This device complies with part 15 of the FCC rules. Operation is subject to the following two conditions: (1) this device may not cause harmful interference, and (2) this device must accept any interference received, including interference that may cause undesired operation.

Changes or modifications not expressly approved by the party responsible for compliance could void the user's authority to operate the equipment.

NOTE: This equipment has been tested and found to comply with the limits for a Class B digital device, pursuant to part 15 of the FCC Rules. These limits are designed to provide reasonable protection against harmful interference in a residential installation. This equipment generates uses and can radiate radio frequency energy and, if not installed and used in accordance with the instructions, may cause harmful interference to radio communications. However, there is no guarantee that interference will not occur in a particular installation. If this equipment does cause harmful interference to radio or television reception, which can be determined by turning the equipment off and on, the user is encouraged to try to correct the interference by one or more of the following measures:

- Reorient or relocate the receiving antenna.
- Increase the separation between the equipment and receiver.
- Connect the equipment into an outlet on a circuit different from that to which the receiver is connected.
- Consult the dealer or an experienced radio/TV technician for help.

Radiation Exposure Statement

To comply with FCC RF exposure compliance requirements, this grant is applicable to only mobile configurations. The antennas used for this transmitter must be installed to provide a separation distance of at least 20cm from all persons and must not be co-located or operating in conjunction with any other antenna or transmitter.