

SAFETY NOTE

- 1, This appliance can be used by children aged from 8 years and above and persons with reduced physical, sensory or mental capabilities or lack of experience and knowledge if they have been given supervision or instruction concerning use of the appliance in a safe way and understand the hazards involved.
- 2, Children shall not play with the appliance.
- 3, Cleaning and user maintenance shall not be made by children without supervision.
- 4, If the supply cord is damaged, it must be replaced by the manufacturer, its service agent or similarly qualified persons in order to avoid a hazard.
- 5, WARNING: the drive shall be disconnected from its power source during cleaning, maintenance and when replacing parts.
- 6, $L_{pA} \leq 70 \text{ dB(A)}$.
- 7, The mass and the dimension of the driven part shall be compatible with the rated torque and rated operating time.
- 8, The type of driven part the drive is intended for.
- 9, WARNING: Important safety instructions. It is important for the safety of persons to follow these instructions. Save these instructions.
- 10, Do not allow children to play with fixed controls. Keep remote controls away from children.
- 11, Frequently examine the installation for imbalance and signs of wear or damage to cables and springs. Do not use if repair or adjustment is necessary.
- 12, Watch the moving shutter and keep people away until the shutter is completely closed.
- 13, WARNING: Important safety instructions. Follow all instructions, since incorrect installation can lead to severe injury.
- 14, Before installing the drive, remove any unnecessary cords and disable any equipment not needed for powered operation.



FCC Warning:

This equipment has been tested and found to comply with the limits for a Class B digital device, pursuant to part 15 of the FCC Rules. These limits are designed to provide reasonable protection against harmful interference in a residential installation. This equipment generates, uses and can radiate radio frequency energy and, if not installed and used in accordance with the instructions, may cause harmful interference to radio communications. However, there is no guarantee that interference will not occur in a particular installation. If this equipment does cause harmful interference to radio or television reception, which can be determined by turning the equipment off and on, the user is encouraged to try to correct the interference by one or more of the following measures:

—Reorient or relocate the receiving antenna.

—Increase the separation between the equipment and receiver.

—Connect the equipment into an outlet on a circuit different from that to which the receiver is connected.

—Consult the dealer or an experienced radio/TV technician for help.

MODIFICATION: Any changes or modifications not expressly approved by the grantee of this device could void the user's authority to operate the device.

IC :

-English:

This device complies with Industry Canada RSS standard(s). Operation is subject to the following two conditions: (1) this device may not cause interference, and (2) this device must accept any interference, including interference that may cause undesired operation of the device.

2. Changes or modifications not expressly approved by the party responsible for compliance could void the user's authority to operate the equipment.

-French:

Le présent appareil est conforme aux CNR d'Industrie Canada applicable aux appareils radio Exemptés de licence. L'exploitation est autorisée aux deux conditions suivantes :

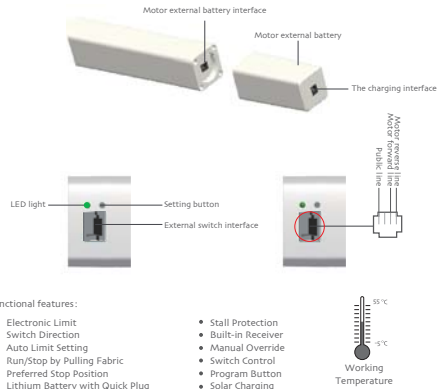
(1) l'appareil ne doit pas produire de brouillage, et (2) l'utilisateur de l'appareil doit accepter tout brouillage radioélectrique subi, même si le brouillage est susceptible d'en compromettre le fonctionnement."

Curtain Motor- MT01-2101-069002 Specification



(A-01)

Product introduction



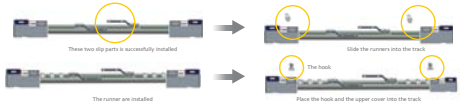
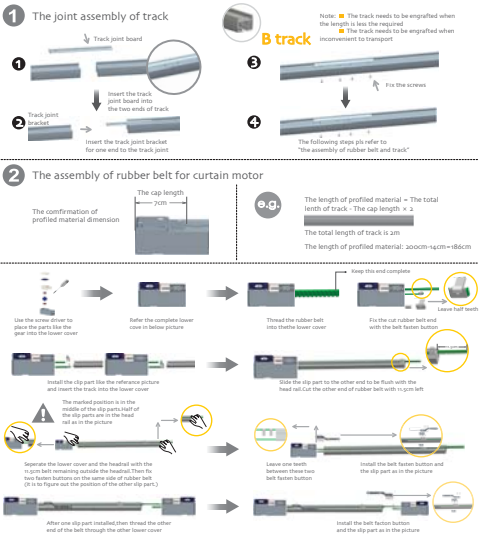
Functional features:

- Electronic Limit
- Switch Direction
- Auto Limit Setting
- Run/Stop by Pulling Fabric
- Preferred Stop Position
- Lithium Battery with Quick Plug
- Stall Protection
- Built-in Receiver
- Manual Override
- Switch Control
- Program Button
- Solar Charging

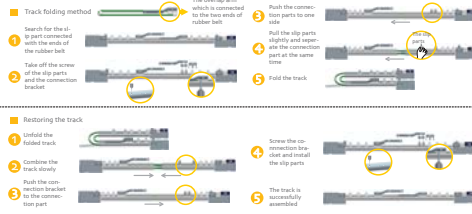
Parameter (More models and parameters are subject to the nameplate)

Type	Rated Torque (N.m)	Rated speed (RPM)	Rated Voltage (V)	Emission Frequency(MHz)
MT01-2101-069002	1.2N.m	80~120RPM	DC 15V	433.92MHz

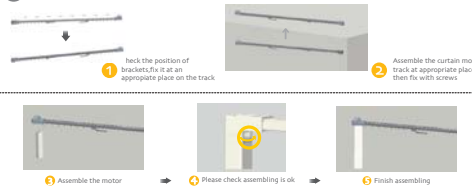
Motor installation



3 Folding method for joint track (for easy transit)



4 The installation method for curtain motor

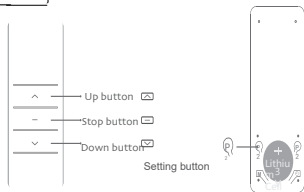


Operation note

- ⚠ Please read the following precautions before use:
1. Not operating under low voltage motors:
Motor stop running when the supply voltage is lower than 13.5V, LED light will flash 5 times, buzzer beep 5 times, prompt low voltage to be charged
 2. Operating:
①The valid interval of the emitter button is 10s, the emitter will quit the set after 10s;
②The LED flashes or beep for hint, please do the next step after the hint.
 3. Set limit position:
①Every time you install the motor, first set after a curtain opened travel to work properly;
②After setting, with power and memory function, after each power cycle required to open or close a recovery stroke;
③After replacing the track or cord to be removed for the trip, and then set itinerary.
 4. When the motor running without any operation, the maximum running time is 4 minutes, it will stop automatically.
 5. One motor maximum can store 10 channels, over 10 channels, if still need add new channels, it will be repeating covered in turn from second channel.
 6. If the emitter lost, please set up again with new emitter.

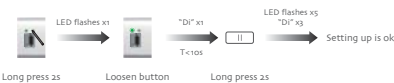


Button specification



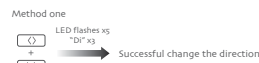
Factory mode

1 Setting up



Note: Press the open button, if the curtain closed, please perform the reverse of direction setting; Only one emitter can be saved without the limit.

2 Switch direction

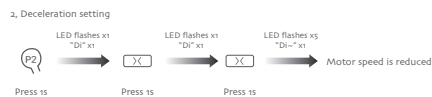
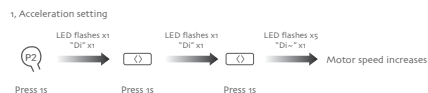


Long press 2s



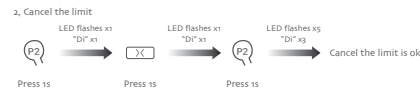
Note: the method one needs to be carried out without a trip; When the change is successful, it will delete the settings related to the limit and need to reset the limit.

3 Speed regulation



Note: If the motor is short sound twice, it means the speed is already fast or slow; when there is no limit, the motor defaults to low speed running. When there is limit, the motor will run fast by default.

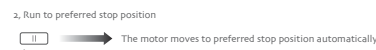
4 Limit position setting



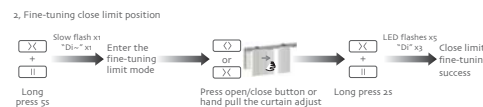
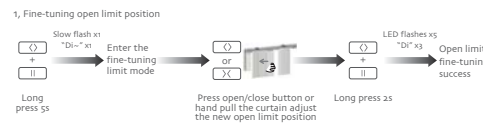
Note: After the limit is set, the motor enters the user mode; after the limit is deleted, the motor enters the factory mode.

User mode

1 Preferred stop position

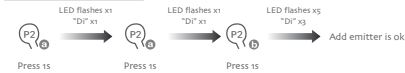


2 Fine-tuning open/close limit position



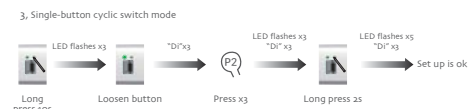
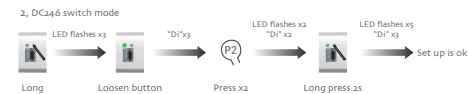
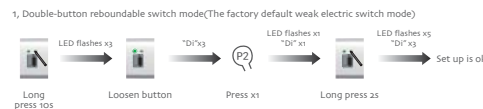
Note: after entering fine-tuning limit mode, if not confirm new schedule points within 2 minutes, or press P1 button or emitter setting button automatically quit this pattern, limit position remains unchanged.

3 Add/delete emitter



Note: Emitter ① is the one already matched code, while emitter ② has not; Repeat this to remove the newly added emitter.

4 Weak electric switch mode selection

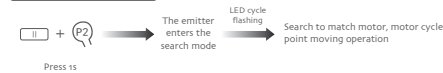


5 Run/stop by pulling fabric



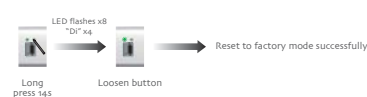
Note: repeat this operation can run by pulling fabric; The default is run by pulling fabric.

6 The search function



Note: this operation needs to be done without the motor to the code or the motor to the search emitter; Emitter after entering search pattern, if received equipment emitter LED lights flashing, motor run continuously for a minutes, not received the emitter exit search instructions, the motor will exit the search pattern.

7 Reset to factory mode



Fault and solution

NUMBER	COMMON FAULTS	PROCESSING METHOD
1	The motor is not running	Check the power supply
2	Unable to control remote controller	1, Check the emitter for the code; 2, Replace the emitter battery
3	Remote control on the contrary	Implement the reverse of direction setting
4	External switch is out of control	Check the external switch motor cable is intact
5	External switch on the contrary	Replacement switches line order
6	Cannot close	1, Check emitter's open button to ensure if it works with open function, if not, please change direction firstly; 2, check limit position;
7	Always hit or couldn't get to the edge	Cancel the limit, setting again
8	With the hand to pull, feeling stuck	Set the limit of the trip
9	Encounter obstacles will not stop	Check the screw used to fixed orbital

MT01-2101-069002 Specification



(A-01)