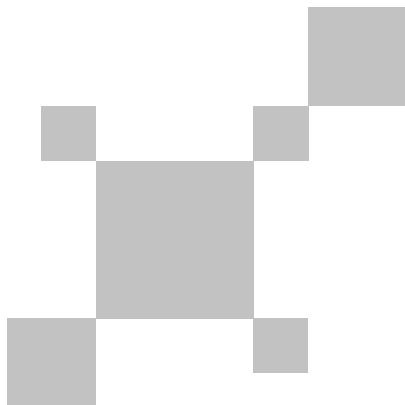


\*本说明书内容若有变更，恕不另行通知\*

**UNI-T®**



**UTx210W**

**红外热像望远镜快速操作手册**

**Thermal Monocular Quick Start Guide**

P/N:110401112838X

## **PREFACE**

Thank you for purchasing the new UTx210W Thermal Monocular. In order to use this product safely and correctly, please read this manual thoroughly, especially the Cautions part.

After reading this manual, it is recommended to keep the manual at an easily accessible place, preferably close to the device, for future reference.

## **LIMITED WARRANTY AND LIABILITY**

Uni-Trend guarantees that the product is free from any defect in material and workmanship within one year from the purchase date. This warranty does not apply to damages caused by accident, negligence, misuse, modification, contamination and improper handling. The dealer shall not be entitled to give any other warranty on behalf of Uni-Trend. If you need warranty service within the warranty period, please contact your seller directly.

This warranty is the only compensation you can obtain. Uni-Trend will not be responsible for any special, indirect, incidental or subsequent damage or loss caused by any reason or speculation. As some areas or countries do not allow limitations on implied warranties and incidental or subsequent damage, the above limitation of liability and stipulation may not apply to you.

Cautions

- 1. Use or store the device in permitted operating or storage temperature to avoid damage.
- 2. Do not aim the device at strong heat sources, such as sun, laser device, spot-welder, etc.
- 3. Do not knock, toss, or shake the device and accessories.
- 4. Do not place battery in high temperature environment or close to the high temperature targets. Do not cause the battery polarity short circuit. Do not place battery into damp condition or water.
- 5. Do not use solvents or similar liquids on the product or cables.
- 6. Please refer the following instructions to wipe the device:
  - Non-optical surface: If necessary, use a clean and soft cloth to wipe the non-optical surface of the thermal imager.
  - Optical surface: Avoid staining the optical surface of the lens when using the thermal imager, and especially avoid touching the lens with hands, as it can leave traces on the lens glass and may corrode(erode) the optical coating layer on the glass surface. When optical surface is stained, wipe it carefully with a dedicated lens paper.
- 7. Keep it stable when using the device.
- 8. Cover the lens when not used, and put Thermal Monocular and its accessories into the specialized package box.
- 9. Please do not disassemble the device to avoid product damage and loss of warranty rights.
- 10. Due to different batches, the materials and details of actual products may be slightly different from the graphic information. Please refer to the actual goods received.
- 11. The experimental data provided in this manual are theoretical values obtained from Uni-Trend's international laboratories and are for reference only. Customers should not use this data as a basis for placing orders. If you have any questions, please contact customer service for derailed consultation.

Content

1. Product Overview -----	15
2. Product Features -----	15
3. Packaging List -----	15
4. Product Appearance -----	15
5. Buttons -----	16
6. Display -----	16
7. Menu -----	17
8. Settings -----	17
9. Mobile APP -----	18
10. Charging -----	19
11. Troubleshooting -----	19
12. General characteristics -----	20
13. Product Lable -----	20
14. FCC Compliance Statement -----	20

1. Product Overview

UTi210W is a compact, portable, and easy-to-use Thermal Monocular with a wide range of applications. It equips a high sensitive built-in infrared detector and with sturdy & durable design, making it suitable for medium to long-distance observation. It is an ideal equipment for outdoor night vision.

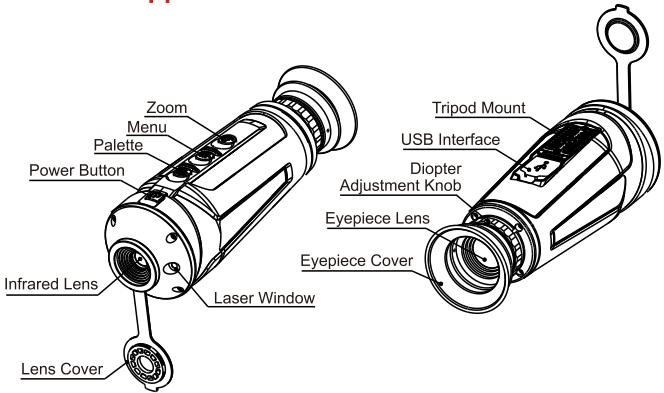
2. Product Features

- High-sensitivity infrared detector, accurately detect the target.
- Inbuilt laser indicator, easily locate the target.
- 640\*400 high-resolution OLED display, in comfortable vision.
- PIP mode, highlight the target.
- Wi-Fi connection, real-time thermal images share.
- IP67 rating, rugged and durable

3. Packaging List

Items	Quantity
Thermal Monocular	1
USB Cable	1
Quick Start Guide	1
Warranty Card	1

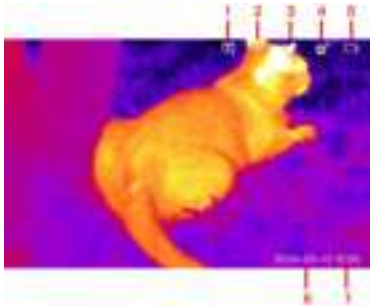
4.Product Appearance



5.Buttons

Buttons	Current Status	Short Press	Long Press
 POWER	Power off	/	Power on
	Main interface	Shutter calibration	Power off
	Menu bar	Back to main interface	Power off
 Palette	Main interface	Palette switch	Scene mode switch
	Menu bar	Up	Up fast
 Menu	Main interface	Open menu	Laser on/off
	Menu bar	Confirm	Return
 Photo-Capture	Main interface	Digital zoom	PIP on/off
	Menu bar	Down	Down fast

6.Display



Items	Description	Items	Description
1	Video Output	5	Battery Status
2	Wi-Fi	6	Date
3	Scene Modes	7	Time
4	Calibration Mode		

## 7. Menu

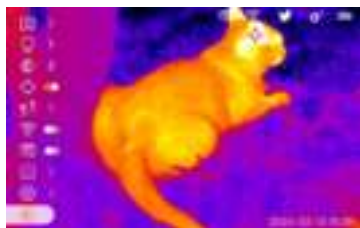
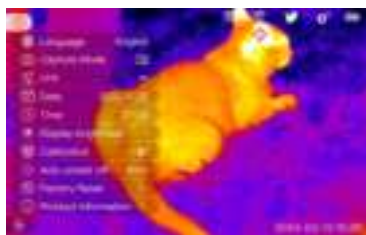


Photo-Capture	Short press Menu button to capture photo or record video.
Brightness Control	5-level brightness of thermal images can be adjustable.
Contrast Control	5-level contrast of thermal images can be adjustable.
Hot Trace	A tracking marker displays on the screen to automatically tracks the hottest area when Hot Trace on.
Stadiametric Ranging	Calculate the probable distance of a known target.
Wi-Fi	Connect to the device's Wi-Fi hotspot and use mobile App when this function ON.
Video Output	Use the Type-C port to connect an external screen, images and videos show on the external screen when this function ON.
Gallery	For images and videos preview.
Settings	Enter to view languages, capturing mode, date, time, etc.

## 8. Settings



Languages	Chinese/English
Capture Mode	Photo-capture/Video-record
Unit	m/yd
Date	Set device's date
Time	Set device's time
Display brightness	Brightness can be adjustable from level 1 to level 5
Calibration	Auto shutter, Manual shutter, background calibration, and the current calibration mode shows on the top right side on the main interface.
Auto power Off	Set the auto-power-off time as per needed.
Factory Reset	Restore the factory default settings of device.
Product information	View the product model, software/firmware version, etc.

## 9. Mobile APP

### Step 1

For iOS, search "Thermal Xplorer" in APP Store.

For Android, search "Thermal Xplorer" in Google Play Store or download it from UNI-T's official website.



iOS download



Android download

### Step 2

- Turn on Wi-Fi hotspot on the device.
- Search Wi-Fi name of "UT x210W\_\*\*\*\*" on mobile phone.
- Enter password 12345678 to connect Wi-Fi.
- Enter the App to get functions of real-time image transmission, remote viewing and images download, etc.

Note: To ensure stable data transmission, please try to maintain the connection within a range of 10m and ensure there are no obstacles blocking the signal.

## 10. Charging

The device supports direct charge from 5V/2A power adapter, and indicators show as followings when use Type-C port to charge the device.

- Solid light in red means being charged.
- Solid light in green means charge finished.

## 11. Troubleshooting

Please check and repair as per the suggestions in the list if any following troubles occurred. Please send the device back to factory or contact your seller if meet troubles not in the list or fail to repair by yourself.

Troubles	Possible Reasons	Solutions
Cannot power on	Too low battery	charge
Fail to charge	Charger loosen	Re-plug
	USB cable damaged	Replace USB cable
Too dark to see images	Low screen brightness	Adjust screen brightness
Unclear images, uneven lines or background	Uncalibrated	Calibrate as per the user manual
Clear icon but unclear images	Dust or freeze on lens	Use soft cloth to wipe the optical surface, or let device in warm and dry condition for at least 4 hours standing.
Fail to connect with smartphone	Incorrect Wi-Fi password	Enter correct password
	Too much Wi-Fi signal interference	Change a place to search and connect Wi-Fi
Wi-Fi signal disappeared or interrupted.	The phone is either out of the Wi-Fi hotspot coverage area or there are obstacles blocking the signal between the phone and the device.	Maintain the connection within a range of 10m and ensure there are no obstacles blocking the signal.
Poor image quality or short detection distance	Possibly caused by bad weather condition (rain, snow, fog)	
Poor image quality in low-temperature condition	Temperature contrast is crucial for the imaging capability of thermal imaging devices. In above-zero temperature conditions, there are different temperature rises among observed objects, the environment, and the background due to varying thermal conductivities. This creates higher temperature contrasts, thereby improving image quality. In below-zero conduction, observed objects, the environment, and the background typically cool to approximately the same temperature, greatly reducing temperature contrasts and resulting in poorer image quality. This is a characteristic of thermal imaging devices.	

## 12. General characteristics

Recommended usage environment : indoor

Pollution degree : 2

Altitude : up to 2000m

Operating temperature : -10°C~ 50 °C

Storage temperature : -20°C~ 60 °C

## 13. Product Label



Class1 Laser product.

Caution

Use of controls or adjustments or performance of procedures other than those specified herein may result in hazardous radiation exposure

## 14. FCC Compliance Statement

**This device complies with Part 15 of the FCC Rules. Operation is subject to the following two conditions: (1) this device may not cause harmful interference, and (2) this device must accept any interference received, including interference that may cause undesired operation.**

Please note that changes or modifications of this product is not expressly approved by the party responsible for compliance could void the user's authority to operate the equipment

NOTE: This equipment has been tested and found to comply with the limits for a Class B digital device, pursuant to Part 15 of the FCC Rules. These limits are designed to provide reasonable protection against harmful interference in a residential installation. This equipment generates, uses and can radiate radio frequency energy and, if not installed and used in accordance with the instructions, may cause harmful interference to radio communications.

However, there is no guarantee that interference will not occur in a particular installation. If this equipment does cause harmful interference to radio or television reception, which can be determined by turning the equipment off and on, the user is encouraged to try to correct the interference by one or more of the following measures:

- Reorient or relocate the receiving antenna.
- Increase the separation between the equipment and receiver.
- Connect the equipment into an outlet on a circuit different from that to which the receiver is connected.
- Consult the dealer or an experienced radio/TV technician for help.

The content of Quick Start Guide is subject to change without prior notice.