

ThinkCentre M90a Gen 6

The functions of Wireless Access Systems including Radio Local Area Networks(WAS/RLANs) within the band 5150-5350 MHz for this device are restricted to indoor use only within all European Union countries. Indoor restriction for 5945-6425 MHz



◆ Operating Frequency

RTL8922AE

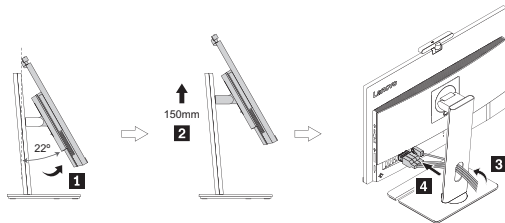
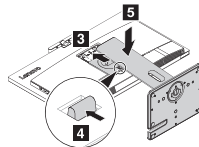
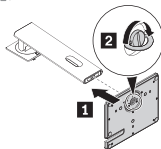
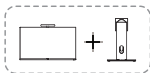
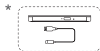
Function	Frequency	ERP Power
WiFi	2.412-2.472 GHz	19.16 dbm
	5.180-5.320 GHz	20.71 dbm
	5.500-5.700 GHz	20.41 dbm
	5.725-5.875 GHz	11.60 dbm
	5.955-6.415 GHz	20.62 dbm
BT	2.402-2.480 GHz	8.04 dbm
Radar	58~62 GHz	-37.40 dbm

AX209NGW

Function	Frequency	ERP Power
WiFi	2.412-2.472 GHz	19.94 dbm
	5.180-5.320 GHz	20.56 dbm
	5.500-5.700 GHz	20.62 dbm
	5.745-5.865 GHz	11.87 dbm
	5.955-6.415 GHz	20.64 dbm
BT	2.402-2.480 GHz	12.21 dbm
Radar	58~62 GHz	-37.40 dbm

AX211NGW

Function	Frequency	ERP Power
WiFi	2.412-2.472 GHz	19.42 dbm
	5.180-5.320 GHz	20.39 dbm
	5.500-5.700 GHz	20.38 dbm
	5.745-5.865 GHz	11.44 dbm
	5.955-6.415 GHz	20.64 dbm
BT	2.402-2.480 GHz	12.43 dbm
Radar	58~62 GHz	-37.40 dbm

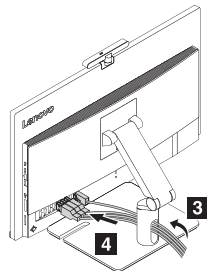
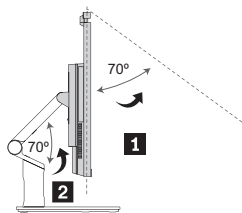
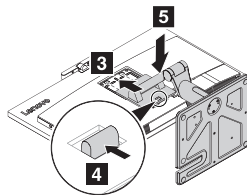
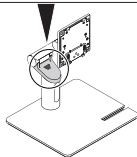
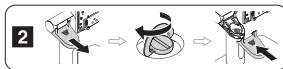
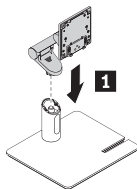
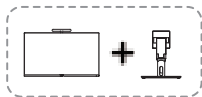


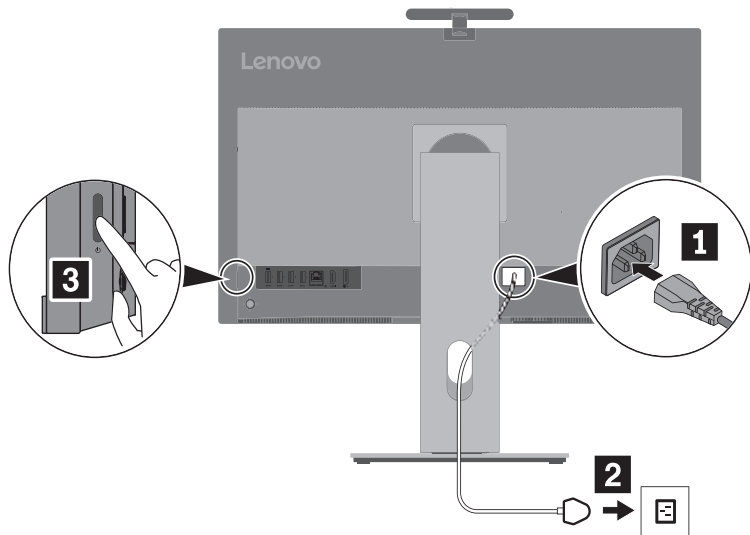
*

For selected models |
For selected models |
For selected models |
For selected models |
For selected models |
For selected models |
For selected models

i

Turn to *User Guide* for USB transfer rates and more product information. |
Turn to *User Guide* for USB transfer rates and more product information. |
Turn to *User Guide* for USB transfer rates and more product information. |
Turn to *User Guide* for USB transfer rates and more product information. |
Turn to *User Guide* for USB transfer rates and more product information. |
Turn to *User Guide* for USB transfer rates and more product information. |
Turn to *User Guide* for USB transfer rates and more product information.

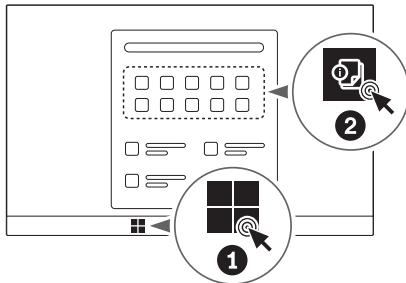






Access User Guide

Access User Guide | Access User Guide | Access User Guide | Access User Guide | Access User Guide | Access User Guide



CC REGULATORY COMPLIANCE

Note: This equipment has been tested and found to comply with the limits for a Class B digital device, pursuant to part 15 of the FCC Rules. These limits are designed to provide reasonable protection against harmful interference in a residential installation. This equipment generates, uses and can radiate radio frequency energy and, if not installed and used in accordance with the instructions, may cause harmful interference to radio communications. However, there is no guarantee that interference will not occur in a particular installation. If this equipment does cause harmful interference to radio or television reception, which can be determined by turning the equipment off and on, the user is encouraged to try to correct the interference by one or more of the following measures:

- Reorient or relocate the receiving antenna.
- Increase the separation between the equipment and receiver.
- Connect the equipment into an outlet on a circuit different from that to which the receiver is connected.
- Consult the dealer or an experienced radio/TV technician for help.
- Changes or modifications not expressly approved by hp could void your authority to operate the equipment. This device complies with Part 15 of the FCC Rules. Operation is subject to the following 2 conditions:

1 These devices may not cause harmful interference.

2 These devices must accept any interference received, including interference that may cause undesired operation.

Maintain a distance of 0 cm (0 inches) from your body to be consistent with how the device is tested for compliance with RF exposure requirements.

FCC ID:A5M-M90AG6F043

EMC COMPLIANCE STATEMENT

Important: This device [and its power adapter] have demonstrated Electromagnetic Compatibility (EMC) compliance under conditions that included the use of compliant peripheral devices and shielded cables between system components. It is important that you use compliant peripheral devices and shielded cables between system components to reduce the possibility of causing interference to radios, televisions, and other electronic devices.

RADIO FREQUENCY EXPOSURE

This device meets the U.S. Federal Communications Commission's (FCC) requirements for exposure to radio waves and is designed and manufactured not to exceed the FCC's emission limits for exposure to radiofrequency (RF) energy. To comply with FCC RF exposure compliance requirements, this device must not be co-located or operating in conjunction with any other antenna or transmitter.

Innovation, Science and Economic Development (ISED) Canada Regulatory Compliance

C ID:5903G-M90APG6F043

INDUSTRY CANADA, CLASS B

This Class B digital apparatus complies with CAN ICES-003(B)/NMB-003(B).

Innovation, Science and Economic Development Canada (ISED Canada)/Innovation, Sciences et Développement économique Canada Industry Canada/Industrie

This device complies with ISED's licence-exempt RSSs. Operation is subject to the following two conditions: (1) This device may not cause interference; and (2) This device must accept any interference, including interference that may cause undesired operation of the device.

Le présent appareil est conforme aux CNR d'ISED Canada applicables aux appareils radio exempts de licence. L'exploitation est autorisée aux deux conditions suivantes: (1) l'appareil ne doit pas produire de brouillage, et (2) l'utilisateur de l'appareil doit accepter tout brouillage radioélectrique subi, même si le brouillage est susceptible d'en compromettre le fonctionnement.

Radio Frequency Exposure/Exposition aux radiofréquences

The output power of the radio technology used in the Device is below the radio frequency exposure limits set by ISED for an uncontrolled environment.

Maintain a distance of 0 cm from your body to be consistent with how the device is tested for compliance with RF exposure requirements.

La puissance de sortie de la technologie radio utilisée dans le périphérique est inférieure aux limites d'exposition aux fréquences radio définies par ISED Canada pour un environnement non contrôlé.

Maintenez une distance de 0 cm de votre corps pour être cohérent avec la façon dont l'appareil est testé pour la conformité aux exigences d'exposition RF.

CAN RSS-216 / CNR-216

The ThinkCentre M90a Pro Gen6 have been tested against the relevant harmonized/designated standards and are in conformity with the essential requirements and other relevant requirements of the Radio Equipment Directive (RED) (2014/53/EU) and of the Radio Equipment Regulations (RER) (S.I. 2017/1206).

It is ultimately the responsibility of the manufacturer to ensure the compliance of the end-product as a whole. The specific product assembly may have an impact to RF radiated characteristics, and manufacturers should carefully consider RF radiated testing with the end-product assembly.

The modules are entitled to carry the CE and UKCA Marks, and a formal Declaration of Conformity (DoC) is available at the product web page which is reachable starting from <https://www.lenovo.com>

This equipment complies with FCC radiation exposure limits set forth for an uncontrolled environment. This equipment should be installed and operated with minimum distance 20cm between the radiator & your body.

Cet équipement est conforme aux limites d'exposition aux radiations de la IC établies pour un environnement non contrôlé. Cet équipement doit être installé et utilisé avec une distance minimale de 20 cm entre le radiateur et votre corps.

For Barcode Position Only

Printed in China
PN: XXXXXXXXXX

First Edition (March 2025)
© Copyright Lenovo 2025.

Lenovo, Lenovo logo, ThinkCentre, and ThinkCentre logo are trademarks of Lenovo. DisplayPort is a trademark of the Video Electronics Standards Association. The terms HDMI and HDMI High-Definition Multimedia Interface are trademarks or registered trademarks of HDMI Licensing LLC in the United States and other countries. All other trademarks are the property of their respective owners.

LIMITED AND RESTRICTED RIGHTS NOTICE: If data or software is delivered pursuant to a General Services Administration "GSA" contract, use, reproduction, or disclosure is subject to restrictions set forth in Contract No. GS-35F-05925.

Reduce
Reuse
Recycle



For FSC Mix logo only