



OWNER'S MANUAL

LG TONE Free

Bluetooth® LG Stereo Headset

NOTE: For the proper performance and to prevent any damage to, or misuse of the headset, please read all of the information carefully prior to using the headset.

Any modifications or changes to this manual due to typographical errors or inaccuracies of stated information shall only be made by LG Electronics Inc.

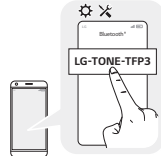


TONE-FP3 TONE-FP3W

www.lg.com

Copyright © 2021 LG Electronics Inc. All rights reserved

4 If the pop-up does not appear, select [LG-TONE-FP3] from the Bluetooth menu on the mobile phone and connect it (for users of iOS or Android 5.0 or lower versions).



CAUTION: In the list of Bluetooth connected devices, LG-TONE-FP3_LE is not the correct model name for connection. Check the model name in use and connect with the model name without "LE". If the earbud model name is abnormally displayed on the Android device, change the model name in the Bluetooth menu of Connected Device Settings.

NOTE: To connect with another device, perform the above procedure again.

Automatic Reconnection

The earbuds are connected automatically when you open the cover of the charging case. If you close the cover of the charging case with both earbuds mounted in the charging case, the earbuds are disconnected.

7

The LG TONE Free (TONE-FP3) is a lightweight wireless headset that uses Bluetooth technology.

This product can be used as an audio accessory for devices supporting either the A2DP or Hands-Free Bluetooth Profile.

Safety Precautions

The following safety precautions are provided to prevent any unexpected accident or damage. Please familiarize yourself with the safety precautions. The safety precautions are classified into "WARNING" and "CAUTION".

WARNING: Failing to comply with the instructions may result in serious injury or death.

CAUTION: Failing to comply with the instructions may result in minor injury or product damage.

WARNING

Do not drop the product from a high place.
Make sure there is no water, alcohol, or benzene in contact with the product.
Do not store the product in a wet or dusty place.
Do not place heavy objects on the product.

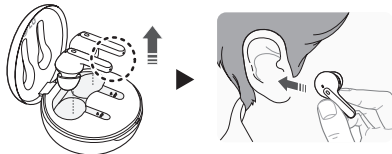
This product is waterproof to the IPX4 level (daily life waterproof). (The IPX4 waterproof rating applies to the earbud product only.)
Do not put the product under the water or use it in a humid location such as a bathroom.

1

Wearing Earbuds

1 Separate the earbuds from the charging case and adjust them so that they fit comfortably in your ears.

NOTE: You can easily separate the earbuds from the charging case by turning the part with dotted line in the image below to left or right and lifting the earbuds.



2 You will hear an audio confirmation when wearing the earbuds.



8

CAUTION

Do not disassemble, adjust, or repair the product arbitrarily.
Do not place the product near excessive heat or flammable material. The product may be damaged if an incompatible charger is used.
Make sure that an infant or child does not swallow a magnet or a small component of the product.

Make sure that foreign objects do not enter the charger's connectors (charging port and power plug). Failure to do so may result in fire or electric shock.

If you have a medical device implanted, contact your doctor before using this device.

This product has a built-in battery, and the battery cannot be removed or replaced arbitrarily.

For your safety, do not remove the battery incorporated in the product. If you arbitrarily replace the battery or don't replace it correctly, it may explode.

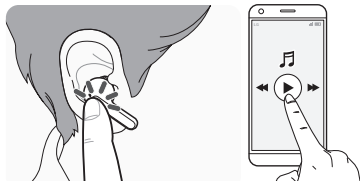
The lithium-ion battery is a hazardous component that can cause injury. Battery replacement by an unqualified professional can cause damage to your device.
Do not discard the battery arbitrarily. Follow the local procedure for discarding batteries.

In order to prevent unnecessary energy consumption, disconnect the device when fully charged. Always use an easily accessible power outlet for charging your device.

Risk of fire or explosion if the battery is replaced by an incorrect type.

2

Playing Music



Function	Description
Play / Pause	: Touch the left or right earbud once.
Adjusting the Volume	: Touch the left(Decrease volume) or right(Increase volume) earbud twice.
Play Next	: Touch the left or right earbud three times.

NOTE: You can change the operation method of the function in the touchpad settings of the LG TONE Free app.

9

Do not store or transport at pressures lower than 11.6 kPa (0.116 bar) and at above 15,000 m (9,320 miles) altitude.

Replacement of a battery with an incorrect type that can defeat a safeguard (for example, in the case of some lithium battery types). Disposal of a battery into fire or a hot oven, or mechanically crushing or cutting of a battery, that can result in an explosion.
Leaving a battery in an extremely high temperature surrounding environment that can result in an explosion or the leakage of flammable liquid or gas.

A battery subjected to extremely low air pressure that may result in an explosion or the leakage of flammable liquid or gas.
Do not carelessly throw away old batteries. It can cause an explosion or fire. The disposal method may vary by country and region. Dispose of it in an appropriate manner.

NOTE

If the product is exposed to excessive sweat, clean the product.

Keep the earbuds clean.

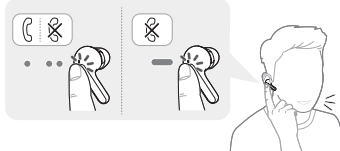
Wearing earbuds for a long time may cause pain, and if humidity inside ears continues for a long time, it may cause skin trouble.

HD Speaker

If the communication network of the device you are connecting to supports HD Voice Calling, you can enjoy making voice calls and listening to music in high definition.

3

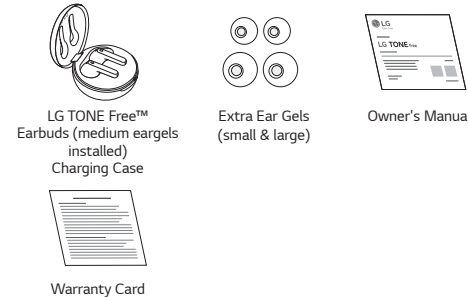
Mobile Calling Functions



Function	Status	Description
Answering Calls	Ringing	Touch the left or right earbud once.
Ending Calls	Talking	Touch the left or right earbud twice.
Making Calls	Idle	If you make a call using a mobile phone, the call is automatically connected to the headset.
Receiving Calls while on the Phone	Talking	If you touch the left or right earbud once, the current call will go on hold, and you will be able to answer an incoming call. If the previous call is on hold, you can finish the current call on the mobile phone. (It works differently depending on the mobile phone settings.)
Rejecting Calls	Ringing	Touch and hold the left or right earbud.

10

Product Components

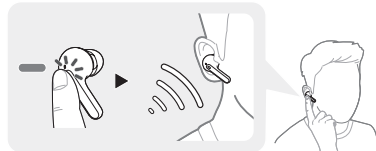


NOTE: Actual product design may differ from images shown in manual.

CAUTION: Make sure authentic LG Electronics components are used. Using a non-authentic component may damage the product and thus void the warranty.

4

Listen to the Ambient Sound (LAS)



The Listen to the Ambient Sound (LAS) function allows you to listen to the ambient sound so that you can recognize the surrounding situation and any potential risks.

Touch and hold the left or right earbud to turn on or off the Listen to the Ambient Sound (LAS).

In the LG TONE Free app, you can choose Listen to the Ambient Sound (LAS). You can configure the Listen to the Ambient Sound mode and Conversation mode using the LG TONE Free app.

Using the LAS results in reduced usable time compared to when it is off.

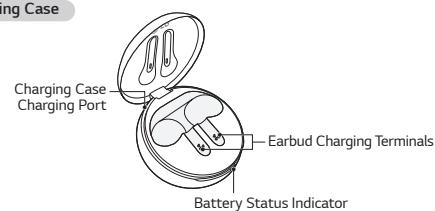
The LAS operates while the phone is in the standby mode or music play mode.

CAUTION: When the LAS mode is enabled, you may hear the ambient sound become loud suddenly.

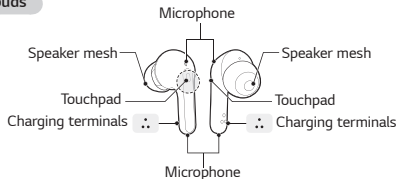
11

Overview

Charging Case



Earbuds

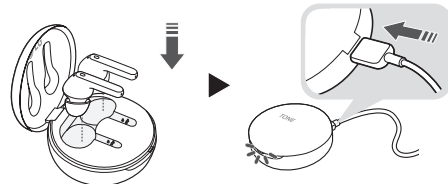


*Make sure that the charging terminal is not soiled with foreign substance.
*The appearance and specifications of the actual product may differ depending on the model.

5

Charging

Wired Charging



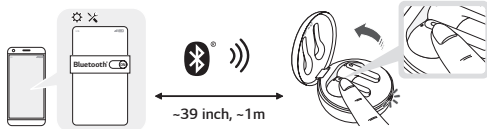
When the charging cable is connected, the charging status is displayed in the charging case.

NOTE: The earbuds and the charging case are charged at the same time. The charging port on the charging case cannot be used to supply power to mobile phones, etc. Purchase a charging cable separately.

12

Pairing and Connecting

Fast Pair



- Turn on the Bluetooth function on the mobile phone or the device to be connected.
- Open the cover of the charging case with the earbuds mounted on the case. Press and hold the touchpad of the left or right earbud for 3 to 5 seconds until the battery status indicator blinks blue.
- When a Fast Pair popup appears on the bottom of the smartphone screen, touch "Connect" to establish connection. (It only supports Android™ 6.0 or higher, and requires configuring Bluetooth and location information settings of the mobile device.)

6

Checking the Battery Status

If earbuds are mounted in the charging case, the earbuds' battery status is displayed. Otherwise, the charging case's battery status is displayed.

Battery Status Indicator	Remaining Battery (charger not connected)	Charging State (charger connected)
Red	20% or lower	Charging
Yellow	20% - 80%	-
Green	80% or higher	Fully charged

NOTE: When the charging case lid is closed, charging case battery status is displayed. If the charging case has no remaining charge, there will be no display and it cannot function. We recommend you keep the charging case charged at all times as the earbuds are not able to be turned on and turned off independently.

13

Battery Status Indicator

Status	Description
Bluetooth Search Mode	The battery status indicator flashes in blue.
Battery below 20%	The battery status indicator turns on and off in red.
Battery 20% - 80%	The battery status indicator turns on and off in yellow.
Battery 80% or more	The battery status indicator turns on and off in green.
When there is a problem while charging	The battery status indicator flashes in red.
Charging (charger connected)	The battery status indicator turns on in red.
Charging complete (charger connected)	The battery status indicator turns on in green.

Out of Range

If the device connected to the product is out of effective communication range, the communication signal becomes weak and the communication is lost. The effective communication range may vary depending on surrounding and other conditions.

If the device comes back within effective communication range, the product automatically reconnects to the device. If the device is not automatically reconnected, **touch the left or right earbud** once to connect them.

LG TONE Free App

If you install the "LG TONE Free" app, you can use Check Earbud Battery, Voice Alert, Change Equalizer Mode, Check Last Connected Location Information, and Find My Earbuds functions. Check out the app for more details. To install the "LG TONE Free" app, search LG TONE Free in the Google Play Store or App Store or scan the QR code below. It supports Android 7.0 or higher and iOS 11 or higher.



Google Play



App Store

Troubleshooting

If you see any of the following symptoms while using the product, make sure to recheck it. It may not be a malfunction.

Symptom	Cause and Solution
The power does not turn on	Check the battery level and charge it.
If unable to make a call with earbuds	If the mobile phone does not support headset and hands-free functions, you cannot use the calling features. Check the battery level and charge it.
If unable to register earbuds to mobile phone	Check whether earbuds are turned on. Check if the earbuds have entered the search mode. - While the earbuds are inserted in the charging case, press and hold the touch pad on the left or right earbud for 3 to 5 seconds to switch to the search mode.
If you replaced the earbuds or there is a problem with the operation (Factory reset)	While the earbuds are inserted in the charging case, press and hold the touch pad on the left or right earbud for 10 seconds or more. - The battery status indicator of the charging case flashes red and the initialization to the factory status is carried out. After initialization to the factory status, reconnect the earbuds.

Specifications and Features

Item	Comments
Bluetooth Specifications	V 5.1 (Headset/Hands-Free/A2DP/AVRCP)
Battery	Earbud : 3.7 V / 55 mAh, Lithium-ion Charging case : 3.7 V / 210 mAh, Lithium-ion
Music Play Time Earbuds & With Charging case	Up to 7 hours*
Charging Time	Earbud : within 1 hour and 30 minutes / Charging case : within 2 hours Fast Charging : 10 min charge for up to 60 min playtime* ※ When charging wired at room temperature
Rated Input Voltage	Earbud : DC 5 V, 80 mA Charging case : DC 5 V, 500 mA
Operating Temperature	0°C (+32°F) ~ +40°C (+104°F)
Operating Humidity	5 % ~ 60 %
Dimensions (inch)	Earbud : 0.64" (W) X 1.29" (L) X 1.02" (H) Charging case : 2.15" (W) X 2.15" (L) X 1.18" (H)

for use and maintenance of the product. Nor does this warranty cover any failure of the product due to accident, modification or adjustment, acts of God, or damage resulting from liquid.

- This warranty does not cover product failures due to improper repair installations, modifications, or service performed by a non-LG Electronics authorized person. Tampering with any of the seals on the product will void the warranty.

- THERE ARE NO EXPRESS WARRANTIES, WHETHER WRITTEN OR ORAL, OTHER THAN THIS PRINTED WITHOUT LIMITATION THE IMPLIED WARRANTIES OF MERCHANTABILITY OR FITNESS FOR A PARTICULAR PURPOSE, ARE LIMITED TO THE DURATION OF THIS LIMITED WARRANTY. IN NO EVENT SHALL LG ELECTRONICS OR ITS VENDORS BE LIABLE FOR INCIDENTAL OR CONSEQUENTIAL DAMAGES OF ANY NATURE WHATSOEVER, INCLUDING BUT NOT LIMITED TO LOST PROFITS OR COMMERCIAL LOSS, TO THE FULL EXTENT THOSE DAMAGES CAN BE DISCLAIMED BY LAW.

- Some countries/states do not allow the exclusion or limitation of incidental or consequential damages, or limitation of the duration of implied warranties, so the preceding limitations or exclusions may not apply to you. The warranty provided does not affect the consumer's statutory rights under applicable national legislation in force, nor the consumer's rights against the dealer arising from their sales/purchase contract.

Weight (oz)	Earbud : 0.19 oz (One earbud) Charging case : 1.16 oz
Frequency range	2402 MHz to 2480 MHz

*Duration of use may vary depending on the connected mobile device, features being used, settings, signal strength, operating temperature, frequency band, and other methods of use.

Declaration of Confirmation

FCC NOTICE TO USERS:

This device complies with part 15 of the FCC Rules.

Operation is subject to the following two conditions:

- (1) This device may not cause harmful interference, and
- (2) This device must accept any interference received, including interference that may cause undesired operation.

Changes or modifications not expressly approved by the manufacturer (or party responsible) for compliance could void the user's authority to operate the equipment.

FCC Part 15.105 statement

This equipment has been tested and found to comply with the limits for a Class B digital device, pursuant to Part 15 of the FCC Rules.

These limits are designed to provide reasonable protection against harmful interference in a residential installation. This equipment generates, uses and can radiate radio frequency energy and, if not installed and used in accordance with the instructions, may cause harmful interference to radio communications.

However, there is no guarantee that interference will not occur in a particular installation. If this equipment does cause harmful interference to radio or television reception, which can be determined by turning

the equipment off and on, the user is encouraged to try to correct the interference by one or more of the following measures:

- Reorient or relocate the receiving antenna.
- Increase the separation between the equipment and receiver.
- Connect the equipment into an outlet on a circuit different from that to which the receiver is connected.
- Consult the dealer or an experienced radio/TV technician for help.

IMPORTANT NOTE:

To comply with the FCC RF exposure compliance requirements, no change to the antenna or the device is permitted. Any change to the antenna or the device could result in the device exceeding the RF exposure requirements and void the user's authority to operate the device.

This device was tested in compliance with FCC/IC RF Exposure limit. (0 mm distance from human head/body (limit 1.6 W/kg @ 1g SAR) and extremity (limit 4.0 W/kg @ 10g SAR)).

This Device contains licence-exempt transmitter(s)/receiver(s) that comply with Innovation, Science and Economic Development Canada's licence-exempt RSS(s). Operation is subject to the following two conditions:
(1) This device may not cause interference.
(2) This device must accept any interference, including interference that may cause undesired operation of the device.

Bluetooth® is a registered trademark of Bluetooth SIG, Inc. worldwide.

Android, Google Play, the Google Play logo, and other related marks and logos are trademarks of Google LLC.

Supplier's Declaration of Conformity	
Trade Name	LG
Responsible Party	LG Electronics USA, Inc.
Address	111 Sylvan Avenue, North Building Englewood Cliffs, New Jersey 07632
Email	lg.environmental@lge.com



Additional Information

1. Radio frequency exposure

This Bluetooth LG Stereo Headset is a radio transmitter and receiver. When in operation, it communicates with a Bluetooth-equipped mobile device by receiving and transmitting radio frequency (RF) electromagnetic fields (microwaves) in the frequency range 2402 to 2480 MHz. Your Bluetooth headset is designed to operate in compliance with the RF exposure guidelines and limits set by national authorities and international health agencies when used with any compatible LG Electronics mobile phone.

2. Bluetooth connection precautions

The following environments affect the range and reception of Bluetooth signals:

- When walls, metal, human bodies, or other obstacles exist between the Bluetooth device and the connected device.
- When equipment that uses 2.4 GHz frequency signals (wireless LANs, wireless phones, microwave ovens, etc.) is placed near the devices being used.
- When using a Bluetooth device (TV, laptop, etc.) other than the mobile phone, the sound quality may be affected by the specifications and performance of the device.

3. Potentially explosive atmosphere

Turn off your electronic device when in any area with a potentially explosive atmosphere. Although this is uncommon, your electronic device could generate sparks. Sparks in such areas could cause an explosion

or fire resulting in bodily injury or even death. Areas with a potentially explosive atmosphere are often but not always clearly marked.

4. Emergency calls

IMPORTANT!

This Bluetooth headset and the electronic device connected to the headset operate using radio signals and mobile and landline networks as well as user-programmed functions, which cannot guarantee connection under all conditions. Therefore, you should never rely solely upon any electronic device for essential communications (e.g., medical emergencies). Remember, in order to make or receive calls, the headset and the electronic device connected to the headset must be switched on and in a service area with adequate mobile signal strength. Emergency calls may not be possible on all mobile phone networks or when certain network services and/or phone features are in use. Check with your local service provider.

5. Battery information

A rechargeable battery has a long service life if treated properly. A new battery or one that has not been used for a long period of time could have reduced capacity the first few times it is used. Do not expose the battery to extreme temperatures, never above +50°C (+122°F) or below -10°C (+14°F). For maximum battery capacity, use the battery at room temperature. If the battery is used in low temperatures, the battery capacity will be reduced. The battery can only be charged in temperatures between 0°C (+32°F) and +45°C (+113°F).

6. Recycling the battery in your Bluetooth headset

The battery in your Bluetooth headset must be disposed of properly and should never be placed in municipal waste. The LG Electronics service partner that removes the battery will dispose of it according to local regulations.

In case rechargeable battery is included in this product, the entire device should be recycled in compliance with rechargeable battery recycling standards because of the internal battery. To dispose of properly, call (800) 822-8837 or visit www.call2recycle.org.

7. Conditions

- The warranty is valid only if the original receipt issued to the original purchaser by the dealer, specifying the date of purchase and serial number, is presented with the product to be repaired or replaced. LG Electronics reserves the right to refuse warranty service if this information has been removed or changed after the original purchase of the product from the dealer.
- If LG Electronics repairs or replaces the product, the repaired or replaced product shall be warranted for the remaining time of the original warranty period or for ninety (90) days from the date of repair, whichever is longer. Repair or replacement may involve the use of functionally equivalent reconditioned units. Replaced parts or components will become the property of LG Electronics.
- This warranty does not cover any failure of the product due to normal wear and tear, or due to misuse, including but not limited to use in other than the normal and customary manner, in accordance with instructions

Limited Warranty

Subject to the conditions of this Limited Warranty, LG Electronics warrants this product to be free from defects in design, material, and workmanship at the time of its original purchase by a consumer, and for a subsequent period of one (1) year. Should your product need warranty service, please return it to the dealer from whom it was purchased or contact your local LG Electronics contact center to get further information.

Important Safety Information

Avoiding hearing damage

Permanent hearing loss may occur if you use your headset at a high volume. Set the volume to a safe level. Over time you can become accustomed to a higher volume that may sound normal but can be damaging to your hearing. If you experience ringing in your ears or muffled speech, stop listening and have your hearing checked. The louder the volume, the less time that is required before your hearing could be affected.

Hearing experts suggest that to protect your hearing:

- Limit the amount of time you use the headset at a high volume.
- Avoid turning up the volume to block out noisy surroundings.
- Turn the volume down if you can't hear people speaking near you.



Using headsets safely

Use of headsets to listen to music while operating a vehicle is not recommended and is illegal in some areas. Be careful and attentive while driving. Stop using this device if you find it disruptive or distracting while operating any type of vehicle or performing any other activity that requires your full attention.

OSS Notice Information

To obtain the source code under GPL, LGPL, MPL, and other open source licenses, that is contained in this product, please visit <https://opensource.lge.com>. In addition to the source code, all referred license terms, warranty disclaimers and copyright notices are available for download. LG Electronics will also provide open source code to you on CD-ROM for a charge covering the cost of performing such distribution (such as the cost of media, shipping, and handling) upon email request to opensource@lge.com. This offer is valid for a period of three years after our last shipment of this product. This offer is valid to anyone in receipt of this information.

Symbols

~	Refers to alternating current (AC).
==	Refers to direct current (DC).
□	Refers to class II equipment.
⏻	Refers to stand-by.
I	Refers to "ON" (power).
⚡	Refers to dangerous voltage.

The output level shall automatically return to an output level not exceeding RS1 when the power is switched off.

