

Internal photos of Tach70



Figure 1: 10 pin PCB front

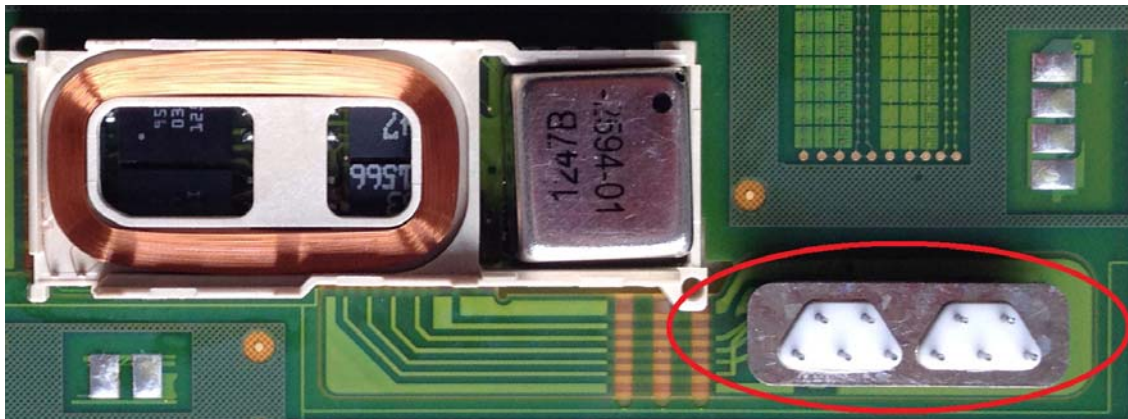


Figure 2: 10 pin PCB front detail

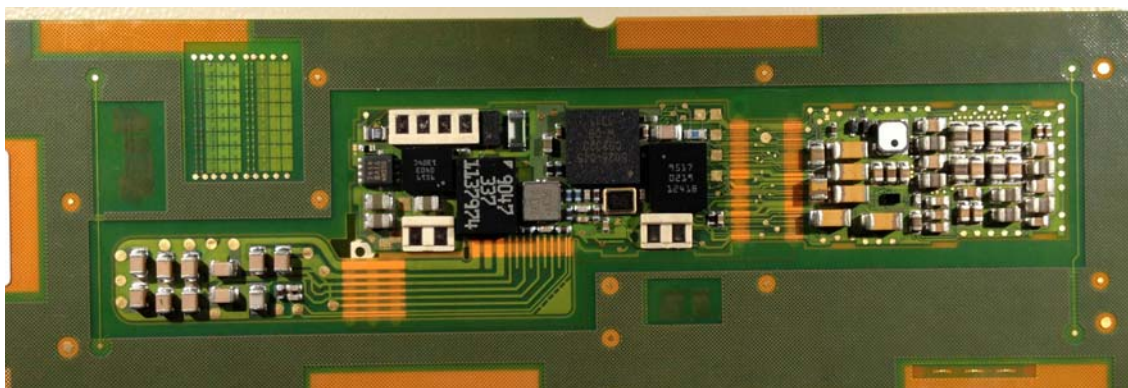


Figure 3: 10 pin PCB back

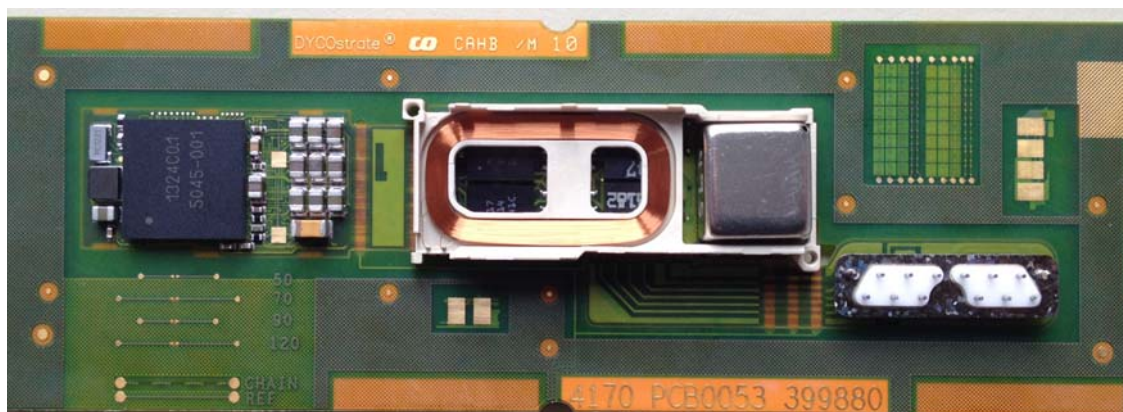


Figure 4: 12 pin PCB front

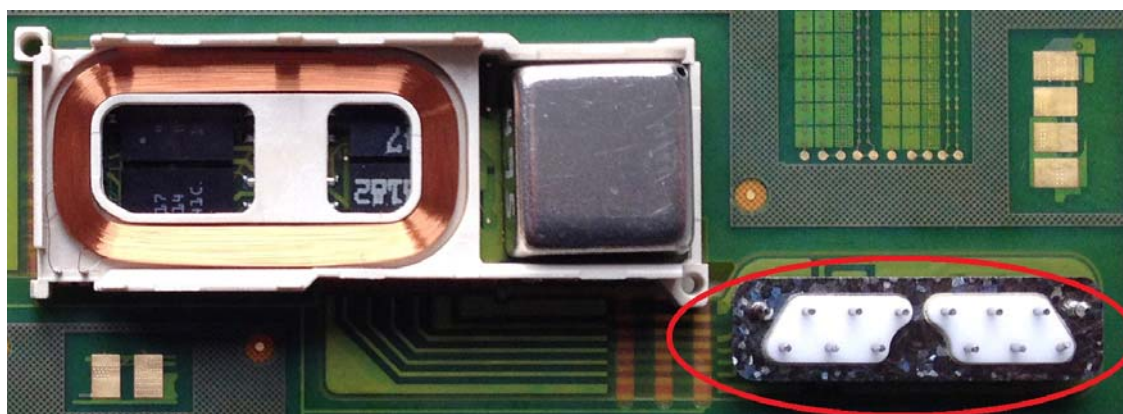


Figure 5: 12 pin PCB front detail

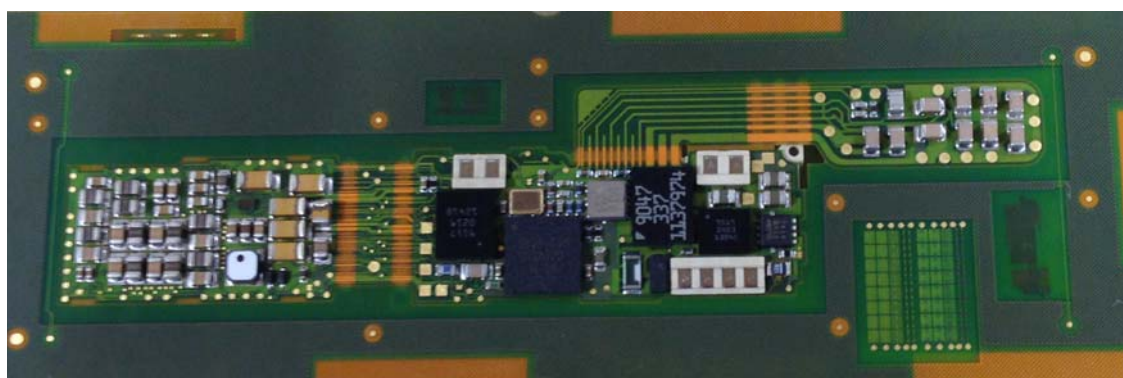


Figure 6: 12 pin PCB back



Figure 7: Frame front



Figure 8: Frame back



Figure 9: Inner assembly