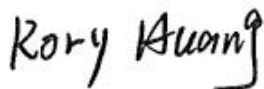


# TEST REPORT

Report No.	CISRR250402029
Project No.	CISR250402029
FCC ID	2BF3O-M5
Applicant	Shenzhen Cheshitong Industrial Co., Ltd.
Address	3F, Building 2, No. 49 Yuexing Road, Fumin Community, Fucheng Street, Longhua District, Shenzhen, Guangdong, China
Manufacturer	Shenzhen Cheshitong Industrial Co., Ltd.
Address	3F, Building 2, No. 49 Yuexing Road, Fumin Community, Fucheng Street, Longhua District, Shenzhen, Guangdong, China
Product Name	Tire Pressure Monitoring System
Trade Mark	车仕通
Model/Type reference	M5
Listed Model(s)	M6 M7 M8 M9 M10 M11 M12 M13 M15 M16
Standard	Part 15 Subpart C Section 15.231
Test date	April 24, 2025 ~ April 27, 2025
Issue date	April 29, 2025
Test result	<b>Complied</b>



Prepared by: Rory Huang



Approved by: Genry Long

*The test results relate only to the tested samples.*

*The test report should not be reproduced except in full without the written approval of Shenzhen Bangce Testing Technology Co., Ltd.*

## Contents

<b>1. REPORT VERSION .....</b>	<b>3</b>
<b>2. SUMMARY OF TEST RESULT .....</b>	<b>4</b>
<b>3. SUMMARY .....</b>	<b>5</b>
3.1. Product Description .....	5
3.2. Radio Specification Description .....	5
3.3. Modification of EUT .....	6
3.4. Testing Site .....	6
3.5. Field Strength Calculation .....	6
3.6. DISTURBANCE Calculation .....	6
<b>4. TEST CONFIGURATION .....</b>	<b>7</b>
4.1. Test frequency list .....	7
4.2. Test mode .....	7
4.3. Support unit used in test configuration and system .....	7
4.4. Test sample information .....	7
4.5. Testing environmental condition .....	8
4.6. Statement of the measurement uncertainty .....	8
4.7. Equipment Used during the Test .....	9
<b>5. TEST CONDITIONS AND RESULTS .....</b>	<b>10</b>
5.1. Antenna Requirement .....	10
5.2. AC Conducted Emission .....	11
5.3. 20 dB Bandwidth .....	12
5.4. Radiated Spurious Emission .....	13
5.6 Silent Period Time .....	18
5.5. Duty cycle Factor .....	20
<b>6. TEST SETUP PHOTOS .....</b>	<b>21</b>
<b>7. EXTERNAL AND INTERNAL PHOTOS .....</b>	<b>23</b>
7.1 External photos .....	23
7.2 Internal photos .....	27

## 1. REPORT VERSION

Version No.	Issue date	Description
00	April 29, 2025	Original

## 2. SUMMARY OF TEST RESULT

Report clause	Test Item	Standard Requirement	Result
5.1	Antenna Requirement	15.203	PASS
5.2	AC Conducted Emission	15.207	PASS
5.3	20 dB Bandwidth	15.231(c)	PASS
5.4	Radiated Spurious Emission	15.231 (e)/15.205/15.209	PASS
5.5	Silent period time	15.231 (e)	PASS
5.6	Duty cycle Factor	15.231	PASS

Note:

- The measurement uncertainty is not included in the test result.

### 3. SUMMARY

#### 3.1. Product Description

Main unit information:	
Product Name:	Tire Pressure Monitoring System
Trade Mark:	车仕通
Model No.:	M5
Listed Model(s):	M6 M7 M8 M9 M10 M11 M12 M13 M15 M16
Model difference:	The model of the series is the same product, named differently because of different sales regions
Power supply:	Input: DC 5V
Hardware version:	N/A
Software version:	N/A
Battery information:	DC 3.7V

#### 3.2. Radio Specification Description

Technology:	SRD
Modulation:	ASK
Operation frequency:	433.92MHz
Channel Number:	1
Antenna type:	PCB Antenna
Antenna gain:	-2dBi

### 3.3. Modification of EUT

No modifications are made to the EUT during all test items.

### 3.4. Testing Site

Laboratory Name	Shenzhen Bangce Testing Technology Co., Ltd.
Laboratory Location	101, building 10, Yunli Intelligent Park, Shutianpu community, Matian Street, Guangming District, Shenzhen, Guangdong, China
FCC registration number	736346

### 3.5. Field Strength Calculation

The field strength is calculated by adding the Antenna Factor and Cable Factor and subtracting the Amplifier Gain and Duty Cycle Correction Factor (if any) from the measured reading. The basic equation with a sample calculation is as follows:

$$FS \text{ (dBuV/m)} = RA \text{ (dBuV)} + AF \text{ (dB/m)} + CL \text{ (dB)} - AG \text{ (dB)}$$

Where FS = Field Strength	CL = Cable Attenuation Factor (Cable Loss)
RA = Reading Amplitude	AG = Amplifier Gain
AF = Antenna Factor	

### 3.6. DISTURBANCE Calculation

The AC mains conducted disturbance is calculated by adding the 10dB Pulse Limiter and Cable Factor and Duty Cycle Correction Factor (if any) from the measured reading. The basic equation with a sample calculation is as follows:

$$CD \text{ (dBuV)} = RA \text{ (dBuV)} + PL \text{ (dB)} + CL \text{ (dB)}$$

Where CD = Conducted Disturbance	CL = Cable Attenuation Factor (Cable Loss)
RA = Reading Amplitude	PL = 10 dB Pulse Limiter Factor

## 4. TEST CONFIGURATION

### 4.1. Test frequency list

Channel	Frequency (MHz)
CH1	433.92

### 4.2. Test mode

For RF test items:		
The engineering prototype is provided with key switching channel to realize EUT continuous transmission. Power setting Default.		
Test Item	Test Mode	Modulation
Conducted test item	TX-CH1	ASK
	Normal link	--
	Charging	--
Radiated test item	TX-CH1	ASK
	Rotating mode	--
	Stationary mode	--
	Pressure alert	--
	Normal link	--
	Charging	--
Remark: – The EUT in each of three orthogonal axis emissions had been tested, but only the worst case (X axis) data recorded in the report.		

### 4.3. Support unit used in test configuration and system

The EUT has been associated with peripherals and configuration operated in a manner tended to maximize its emission characteristics in a typical application.

The following peripheral devices and interface cables were connected during the measurement:

Item	Equipment name	Trade Name	Model No.
1	--	--	--

### 4.4. Test sample information

Type	sample no.
Engineer sample	CISR250325193-1#
Normal sample	CISR250325193-2#

#### 4.5. Testing environmental condition

Type	Requirement	Actual
Temperature:	15~35°C	25°C
Relative Humidity:	25~75%	50%
Air Pressure:	860~1060mbar	1000mbar

#### 4.6. Statement of the measurement uncertainty

No.	Test Items	Measurement Uncertainty
1	AC Conducted Emission	1.63dB
2	Power Spectral Density	1.34dB
3	20dB Bandwidth	0.002%
4	Duty cycle	-
5	Conducted Band Edge and Spurious Emission	1.93dB
6	Radiated Band Edge Emission	3.76dB for 30MHz-1GHz 3.80dB for above 1GHz
7	Radiated Spurious Emission	3.76dB for 30MHz-1GHz 3.80dB for above 1GHz

This uncertainty represents an expanded uncertainty expressed at approximately the 95% confidence level using a coverage factor of  $k=1.96$ .



#### 4.7. Equipment Used during the Test

Equipment	Manufacture	Model No.	Serial No.	Last cal.	Cal Interval
9*6*6 anechoic chamber	SKET	9.3*6.3*6	N/A	2024.09.01	3Year
Spectrum analyzer	Agilent	N9020A	MY50530263	2025.01.08	1Year
Receiver	ROHDE&SCHWARZ	ESCI	100853	2025.01.08	1Year
Spectrum analyzer	R&S	FSV-40N	/	2025.01.08	1Year
Bilog Antenna	Schwarzbeck	VULB 9163	1463	2025.01.08	2Year
Horn Antenna	SCHWARZBECK	BBHA 9120 D	2487	2025.01.08	2Year
Active Loop Antenna	SCHWARZBECK	FMZB 1519B	/	2025.01.08	2Year
RF Cable	Tonscend	Cable 1	/	2025.01.08	1Year
RF Cable	Tonscend	Cable 2	/	2025.01.08	1Year
RF Cable	SKET	Cable 3	/	2025.01.08	1Year
Pre-amplifier	Tonscend	TAP9K3G32	AP21G806153	2025.01.08	1Year
Pre-amplifier	Tonscend	TAP01018050	AP22E806229	2025.01.08	1Year
L.I.S.N.#1	Schwarzbeck	NSLK8127	/	2025.01.08	1Year
L.I.S.N.#2	ROHDE&SCHWARZ	ENV216	/	2025.01.08	1Year
Horn Antenna	SCHWARZBECK	BBHA9170	1130	2025.01.08	2 Year
Preamplifier	Tonscend	TAP18040048	AP21C806126	2025.01.08	1Year
variable-frequency power source	Pinhong	PH1110	/	2025.01.08	1Year
6dB Attenuator	SKET	DC-6G	/	N/A	N/A
Artificial power network	Schwarzbeck	NSLK8127	8127-01096	2025.01.08	1Year
EMI Test Receiver	Rohde&schwarz	ESCI7	100853	2025.01.08	1Year
8-wire Impedance Stabilization Network	Schwarzbeck	NTFM 8158	8158-00337	2025.01.08	1Year
Artificial power network	Schwarzbeck	ENV216	/	2025.01.08	1Year
Antenna tower	SKET	Bk-4AT-BS	AT2021040101-V1	N/A	N/A

## 5. TEST CONDITIONS AND RESULTS

### 5.1. Antenna Requirement

#### Standard Applicable

#### **FCC CFR Title 47 Part 15 Subpart C Section 15.203:**

An intentional radiator shall be designed to ensure that no antenna other than that furnished by the responsible party shall be used with the device. The use of a permanently attached antenna or of an antenna that uses a unique coupling to the intentional radiator, the manufacturer may design the unit so that a broken antenna can be replaced by the user, but the use of a standard antenna jack or electrical connector is prohibited.

#### Description

The EUT antenna is PCB Antenna (-2dBi), the directional gain of the antenna less than 6dBi. It comply with the standard requirement. In case of replacement of broken antenna the same antenna type must be used. Antenna structure please refer to the EUT internal photographs antenna photo.

Remark: The antenna gain is provided by the customer, if the data provided by the customer is not accurate, Shenzhen Bangce Testing Technology Co., Ltd. does not assume any responsibility.

## 5.2. AC Conducted Emission

### Limit:

### FCC CFR Title 47 Part 15 Subpart C Section 15.207

Frequency range (MHz)	Limit (dBuV)	
	Quasi-peak	Average
0.15-0.5	66 to 56*	56 to 46*
0.5-5	56	46
5-30	60	50

\* Decreases with the logarithm of the frequency.

### Test configuration:



### Test procedure:

1. The EUT was setup according to ANSI C63.10 requirements.
2. The EUT was placed on a platform of nominal size, 1 m by 1.5 m, raised 80 cm above the conducting ground plane. The vertical conducting plane was located 40 cm to the rear of the EUT. All other surfaces of EUT were at least 80 cm from any other grounded conducting surface.
3. The EUT and simulators are connected to the main power through a line impedances stabilization network (LISN). The LISN provides a 50 ohm /50uH coupling impedance for the measuring equipment.
4. The peripheral devices are also connected to the main power through a LISN. (Refer to the block diagram of the test setup and photographs)
5. Each current-carrying conductor of the EUT power cord, except the ground (safety) conductor, was individually connected through a LISN to the input power source.
6. The excess length of the power cord between the EUT and the LISN receptacle were folded back and forth at the center of the lead to form a bundle not exceeding 40 cm in length.
7. Conducted emissions were investigated over the frequency range from 0.15MHz to 30MHz using a receiver bandwidth of 9 kHz.
8. During the above scans, the emissions were maximized by cable manipulation.

### Test mode:

Refer to the clause 4.2

### Result:

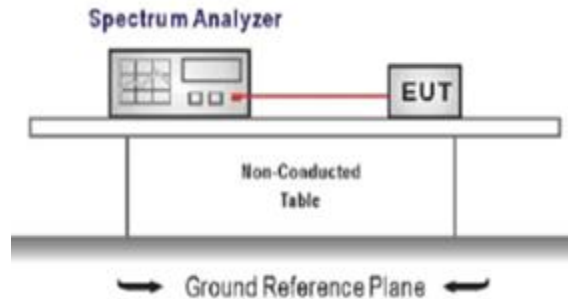
Passed

### 5.3. 20 dB Bandwidth

Limit:

The bandwidth of the emission shall be no wider than 0.25% of the center frequency for devices operating above 70 MHz and below 900 MHz. Bandwidth is determined at the points 20 dB down from the modulated carrier.

Test configuration:



Test procedure:

1. The transmitter output was connected to the spectrum analyzer through an attenuator, the path loss was compensated to the results for each measurement.
2. Set to the maximum power setting and enable the EUT transmit continuously
3. Use the following spectrum analyzer settings:  
Span = approximately 2 to 3 times the 20 dB bandwidth, centered on a Test channel  
RBW  $\geq$  1% of the 20 dB bandwidth, VBW  $\geq$  RBW  
Sweep = auto, Detector function = peak, Trace = max hold
4. Measure and record the results in the test report.

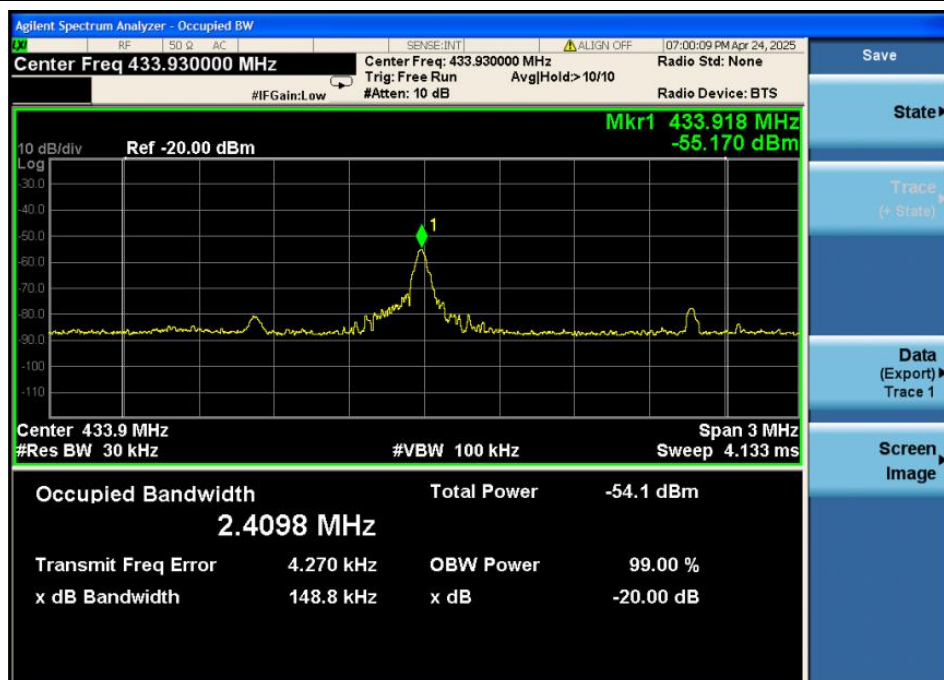
Test mode:

Refer to the clause 4.2

Result:

**Passed**

Center Frequency of operation(MHz)	Measured 20dB Bandwidth(kHz)	Limit(kHz)	Result
433.92	148.8	1084.75	PASS



## 5.4. Radiated Spurious Emission

### Limit:

#### FCC CFR Title 47 Part 15 Subpart C Section 15.231(e)

Fundamental frequency (MHz)	Field strength of fundamental (microvolts/meter)	Field strength of spurious emission (microvolts/meter)
40.66-40.70	1,000	100
70-130	500	50
130-174	500 to 1,500 <sup>1</sup>	50 to 150 <sup>1</sup>
174-260	1,500	150
260-470	1,500 to 5,000 <sup>1</sup>	150 to 500 <sup>1</sup>
Above 470	5,000	500

<sup>1</sup>Linear interpolations.

#### FCC CFR Title 47 Part 15 Subpart C Section 15.209

Frequency	Limit (dBuV/m)	Value
0.009 MHz ~0.49 MHz	2400/F(kHz) @300m	Quasi-peak
0.49 MHz ~ 1.705 MHz	24000/F(kHz) @30m	Quasi-peak
1.705 MHz ~30 MHz	30 @30m	Quasi-peak

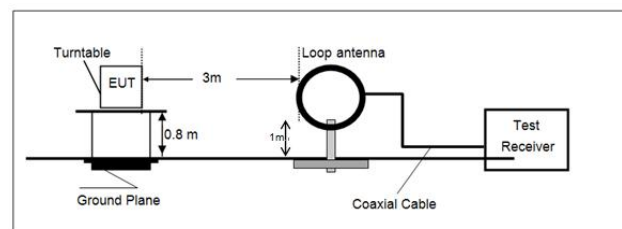
Limit dBuV/m @3m = Limit dBuV/m @300m + 40\*log(300/3)

Limit dBuV/m @3m = Limit dBuV/m @30m + 40\*log(30/3)

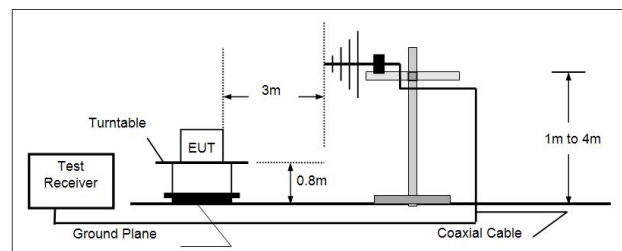
Frequency	Limit (dBuV/m @3m)	Value
30MHz~88MHz	40.00	Quasi-peak
88MHz~216MHz	43.50	Quasi-peak
216MHz~960MHz	46.00	Quasi-peak
960MHz~1GHz	54.00	Quasi-peak
Above 1GHz	54.00	Average
	74.00	Peak

### Test configuration:

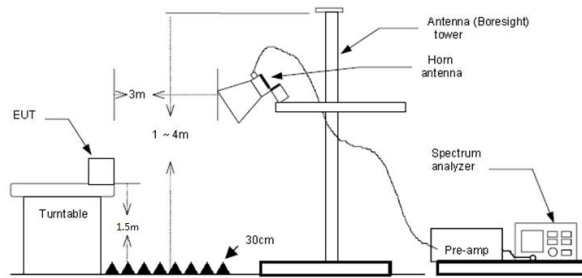
9kHz~30MHz



30 MHz ~ 1 GHz



Above 1 GHz



Test procedure:

1. The EUT was setup and tested according to ANSI C63.10.
2. The EUT is placed on a turn table which is 0.8 meter above ground for below 1 GHz, and 1.5 m for above 1 GHz. The turn table is rotated 360 degrees to determine the position of the maximum emission level.
3. The EUT was set 3 meters from the receiving antenna, which was mounted on the top of a variable height antenna tower.
4. For each suspected emission, the EUT was arranged to its worst case and then tune the Antenna tower (from 1 m to 4 m) and turntable (from 0 degree to 360 degrees) to find the maximum reading. A pre-amp and a high pass filter are used for the test in order to get better signal level to comply with the guidelines.
5. Set to the maximum power setting and enable the EUT transmit continuously.
6. Use the following spectrum analyzer settings
  - a) Span shall wide enough to fully capture the emission being measured;
  - b) Below 1 GHz:  
RBW=120 kHz, VBW=300 kHz, Sweep=auto, Detector function=peak, Trace=max hold;  
If the emission level of the EUT measured by the peak detector is 3 dB lower than the applicable limit, the peak emission level will be reported. Otherwise, the emission measurement will be repeated using the quasi-peak detector and reported.
  - c) Set RBW=1MHz, VBW=3MHz for >1GHz, Sweep time=auto, Detector=peak, Trace=max hold for Peak measurement
  - d) Set RBW=1MHz, VBW=3MHz for >1GHz, Sweep time=auto, Detector=peak, Trace=max hold for Peak measurement

Test mode:

Refer to the clause 4.2

Result:

**Passed**

Note:

- 1) Level= Reading + Factor/Transd; Factor/Transd =Antenna Factor+ Cable Loss- Preamp Factor
- 2) Margin = Level – Limit
- 3) Average measurement was not performed if peak level is lower than average limit(54 dBuV/m) for above 1GHz.
- 4) The other emission levels were very low against the limit.
- 5) This test was performed with EUT in X, Y, Z position and the worse case was found when EUT in X position.
- 6) The device is a periodic transmission signa

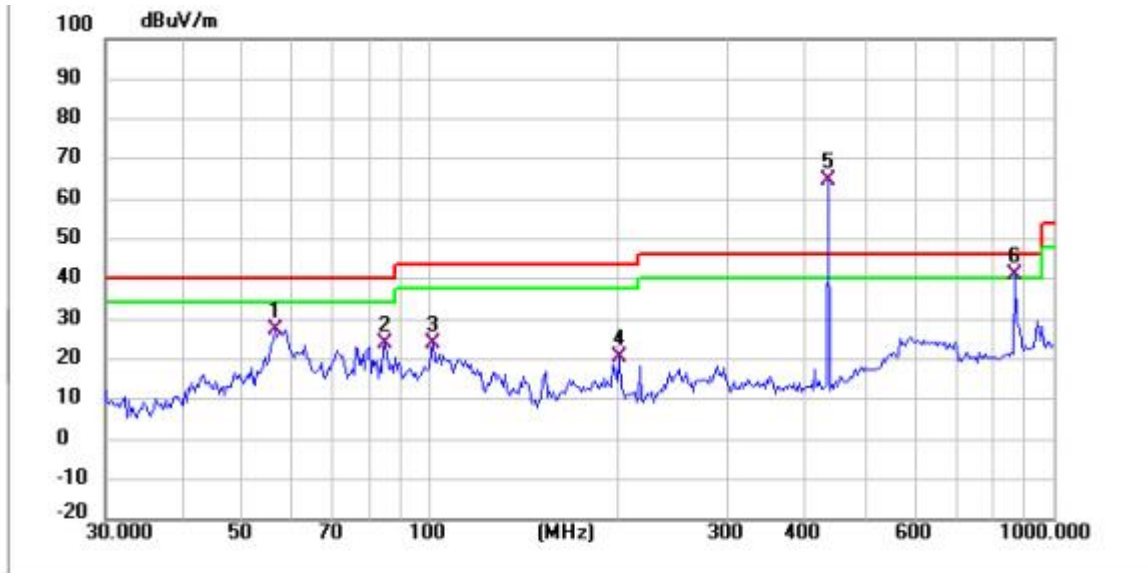
### For 9 kHz ~ 30 MHz

The EUT was pre-scanned this frequency band, found the radiated level 20dB lower than the limit, so don't show data on this report.

### For 30 MHz ~ 1000 MHz

Polarization:

Horizontal



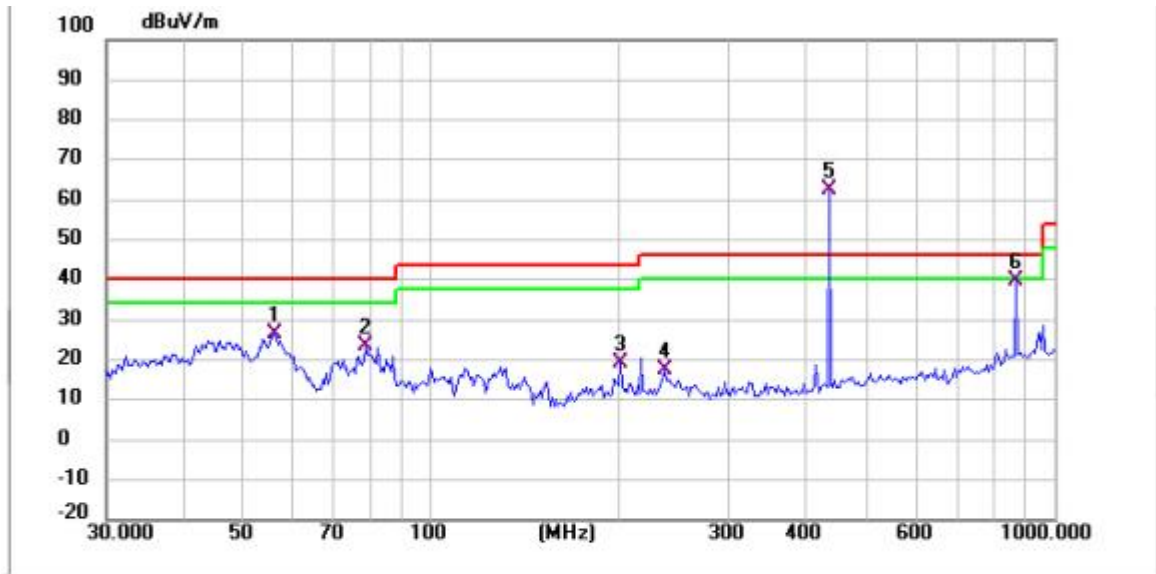
No.	Frequency (MHz)	Reading (dBuV)	Factor (dB/m)	Level (dBuV/m)	Limit (dBuV/m)	Margin (dB)	Detector
1	56.3947	57.96	-30.40	27.56	40.00	-12.44	QP
2	84.7020	57.85	-33.98	23.87	40.00	-16.13	QP
3	100.9339	54.73	-30.84	23.89	43.50	-19.61	QP
4	200.6880	50.37	-29.83	20.54	43.50	-22.96	QP
5	433.9210	91.14	-23.88	67.26	92.87	-25.61	PK
6	869.1300	56.93	-15.25	41.68	72.87	-31.19	PK

### Fundamental and Harmonics Result

Frequency (MHz)	Peak Level (dB $\mu$ V/m)	AV Factor(dB $\mu$ V/m)	Average Level (dB $\mu$ V/m)	Limit(dB $\mu$ V/m) (Peak)	Limit(dB $\mu$ V/m) (Average)	Conclusion
433.921	67.26	-9.25	58.01	92.87	72.87	PASS
869.130	41.68	-9.25	32.43	72.87	52.87	PASS

Polarization:

Vertical



No.	Frequency (MHz)	Reading (dBuV)	Factor (dB/m)	Level (dBuV/m)	Limit (dBuV/m)	Margin (dB)	Detector
1	56.0007	56.89	-30.37	26.52	40.00	-13.48	QP
2	78.4133	58.01	-34.65	23.36	40.00	-16.64	QP
3	200.6880	49.23	-29.83	19.40	43.50	-24.10	QP
4	237.4760	46.37	-28.85	17.52	46.00	-28.48	QP
5	433.9210	89.00	-23.88	65.12	92.87	-27.75	PK
6	869.1300	55.99	-15.25	40.74	72.87	-32.13	PK

Fundamental and Harmonics Result

Frequency (MHz)	Peak Level (dB $\mu$ V/m)	AV Factor(dB $\mu$ V/m)	Average Level (dB $\mu$ V/m)	Limit(dB $\mu$ V/m) (Peak)	Limit(dB $\mu$ V/m) (Average)	Conclusion
433.921	65.12	-9.25	55.87	92.87	72.87	PASS
869.130	40.74	-9.25	31.49	72.87	52.87	PASS



**For 1 GHz ~ 5 GHz**

Test frequency:433.92MHz

Freq. (MHz)	Reading (dBuv)	Correction Factor (dB/m)	Level	Limit (dBuV/m)	Margin (dB)	Remark	Result	Polarity
1204	65.24	-5.92	59.32	74	-14.68	PK	Pass	H
1204	65.13	-5.92	59.21	74	-14.79	PK	Pass	V

Test frequency:433.92MHz

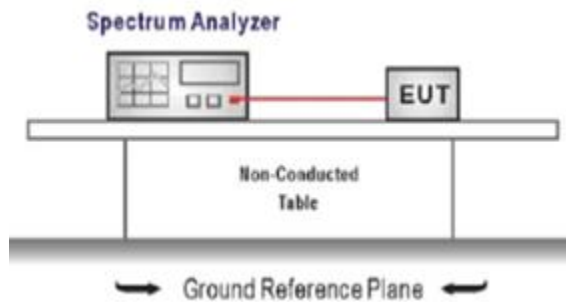
Freq. (MHz)	Level	Dutycycle Factor	AVG Level	Limit (dBuV/m)	Margin (dB)	Remark	Result	Polarity
1204.00	59.32	-9.25	48.21	54	-5.79	AVG	Pass	H
1204.00	59.21	-9.25	48.10	54	-5.90	AVG	Pass	V

## 5.6 Silent Period Time

### Limit:

- 1.A transmitter activated automatically shall cease transmission within 5s seconds after activation
- 2.Devices operated under the provisions of this paragraph shall be provided with a means for automatically limiting operation so that the duration of each transmission shall not be greater than one second and the silent period between transmissions shall be at least 30 times the duration of the transmission but in no case less than 10 seconds.

### Test configuration:



### Test procedure:

Maximizing procedure was performed on the highest emissions to ensure that the EUT complied with all installation combinations.

### Test mode:

Refer to the clause 4.2

### Result:

**Passed**

### 1. Operation in FCC 15.23 1(a)(2)

Mode	Tx Frequency [MHz]	Time of Transmitting [s]	Limit [s]	Result
Pressure alert	433.92	1.669	5.000	Pass

### Test Graphs:

Pressure alert



## 2. Operation in FCC 15.231(e)

### Rotating mode :

Duration of transmission:  $217.3 \text{ ms} < 1 \text{ s}$

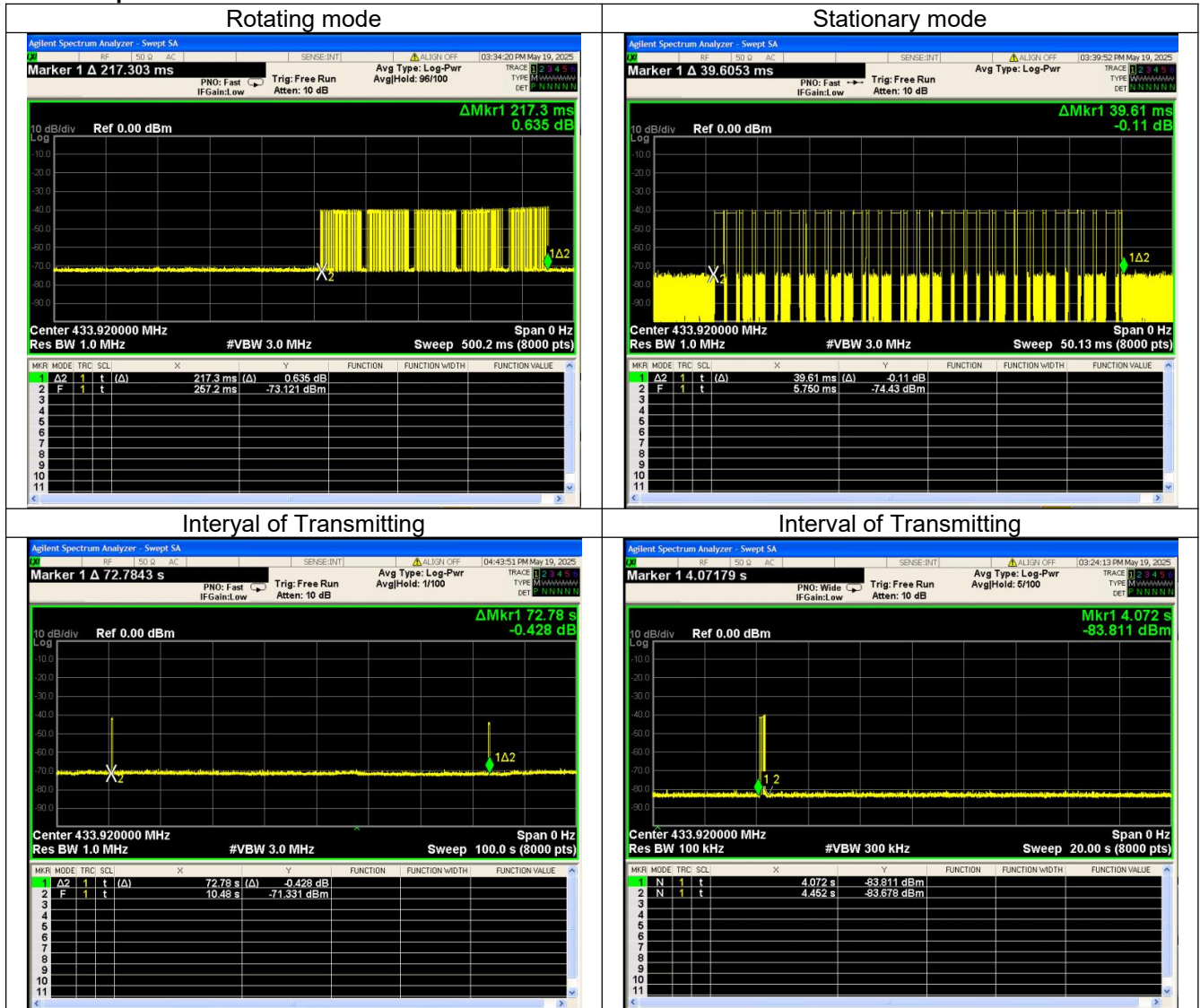
Silent period between transmissions:  $72.78 \text{ s} - 0.2173 \text{ s} = 72.5627 \text{ s} > 30$  times the duration of transmission and 10 s.

### Stationary mode:

Duration of transmission:  $39.61 \text{ ms} < 1 \text{ s}$

Silent period between transmissions:  $3840 \text{ s} - 0.03961 \text{ s} = 3839.96039 \text{ s} > 30$  times the duration of transmission and 10 s.

## Test Graphs:



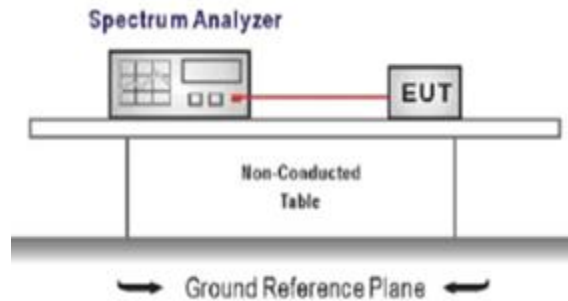
Note: The device is a periodic transmission signal

## 5.5. Duty cycle Factor

Limit:

No dedicated limit specified in the Rules.

Test configuration:



Test procedure:

1. Place the EUT on the table and set it in transmitting mode.
2. Remove the antenna from the EUT and then connect a low loss RF cable from the antenna port to the spectrum analyzer.
3. Set centre frequency of spectrum analyzer=operating frequency.
4. Set the spectrum analyzer as RBW=100kHz, VBW=300kHz, Span=0Hz, Adjust Sweep=Auto.
5. Repeat above procedures until all frequency measured was complete.

Test mode:

Refer to the clause 4.2

Result:

**Passed**

Test Data

$$T_{on} = 0.81 \times 14 + 0.225 \times 19 = 15.615(\text{ms})$$

$$T_p = 45.29(\text{ms})$$

$$\text{The duty cycle} = 12.28 / 44.17 = 34.47\%$$

$$\text{Average Correction Factory} = 20 \log (T_{on}/T_p) = 20 \log (0.3447) = -9.25 \text{dB}$$

Test plot of Duty cycle

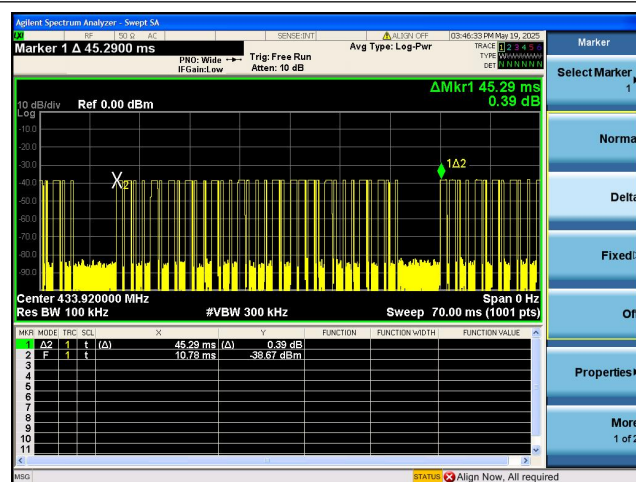


Fig.1

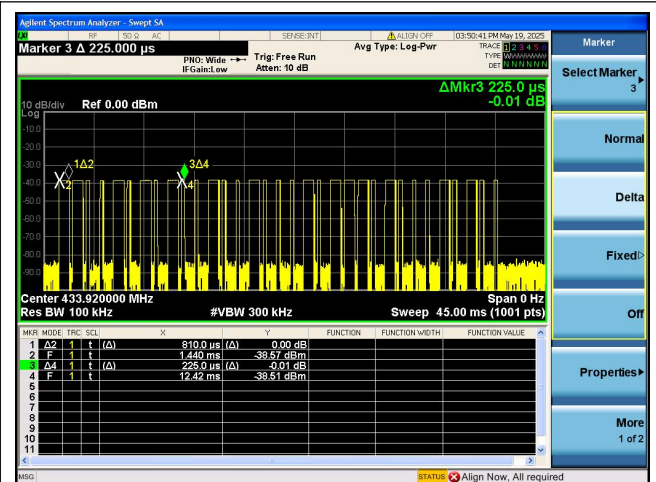


Fig.2

## 6. TEST SETUP PHOTOS

Conducted Emission

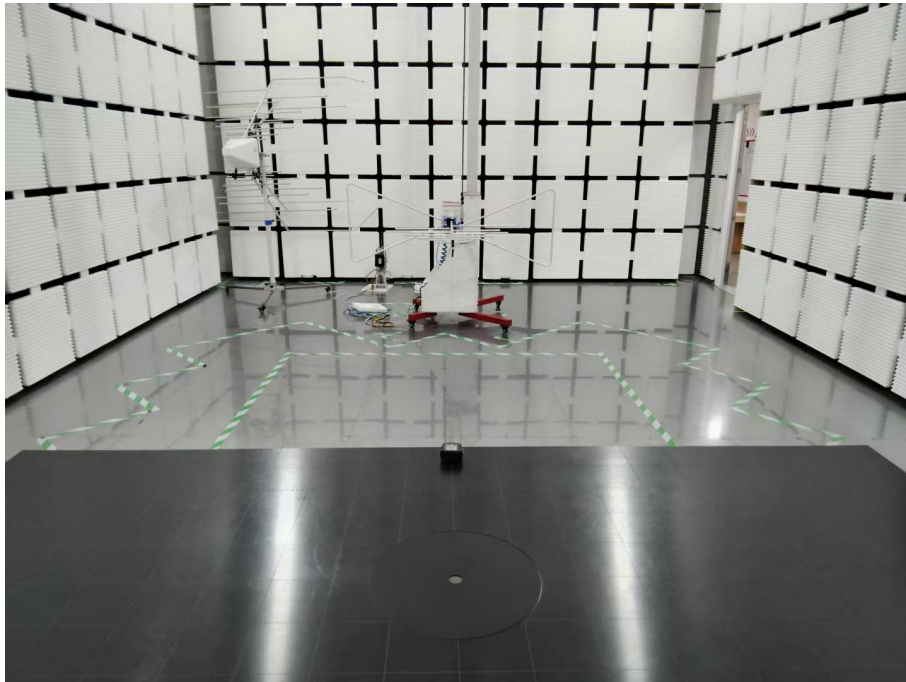


Radiated Spurious Emission (Above 1GHz)





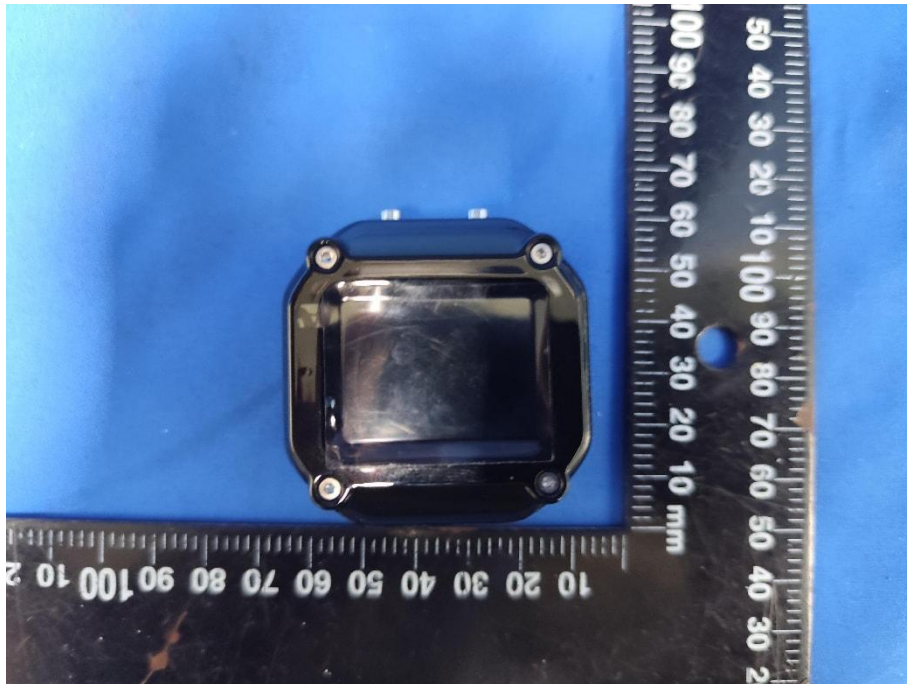
Radiated Spurious Emission (below 1GHz)



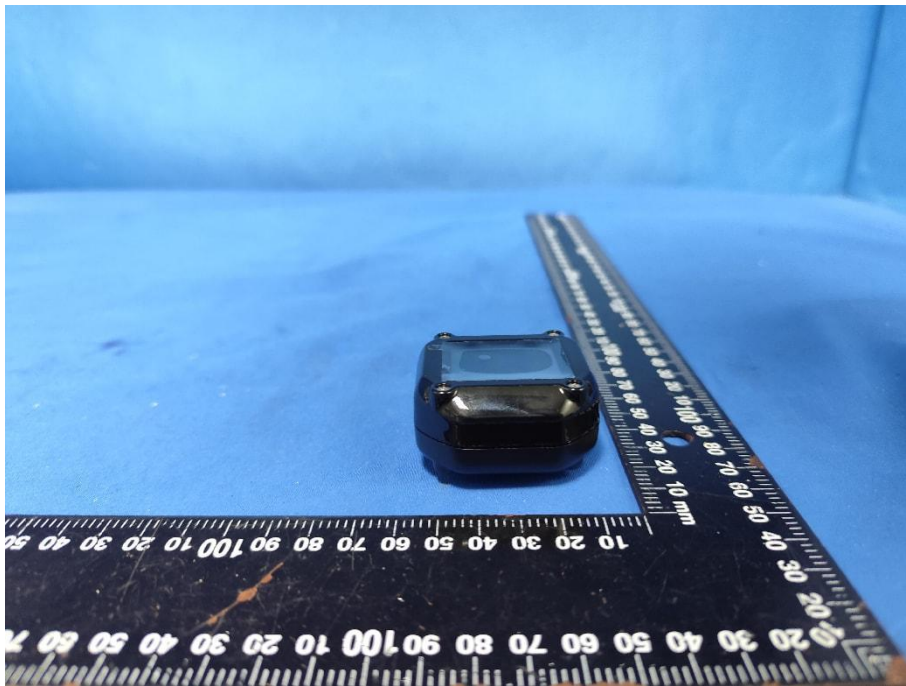
## 7. EXTERNAL AND INTERNAL PHOTOS

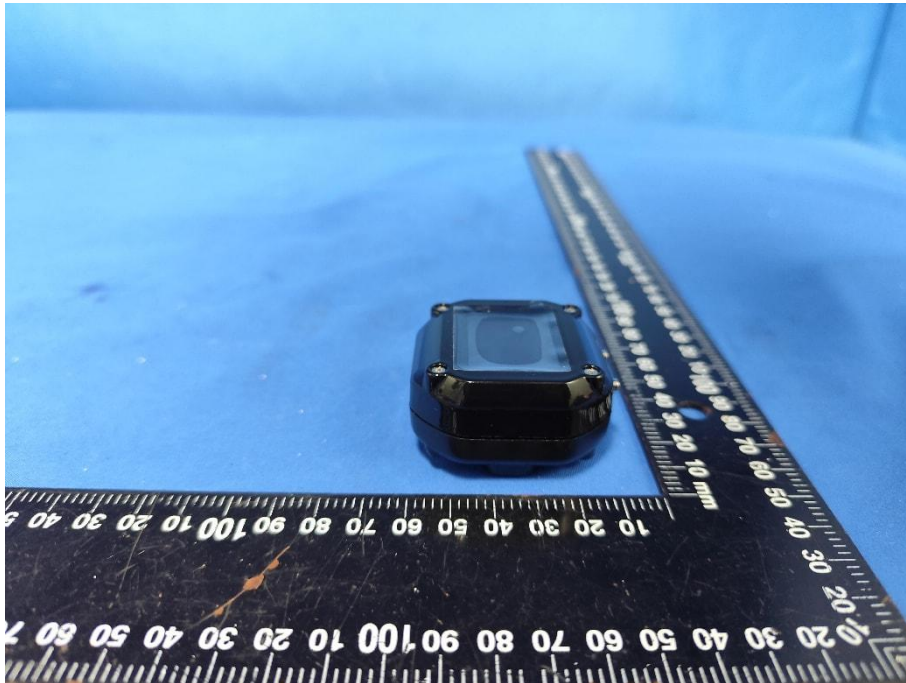
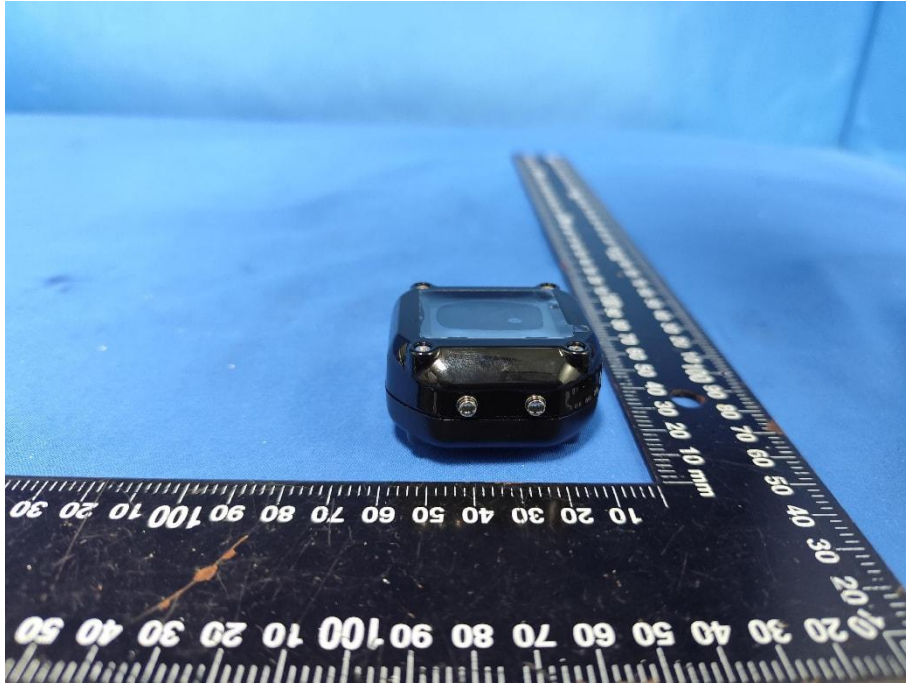
### 7.1 External photos



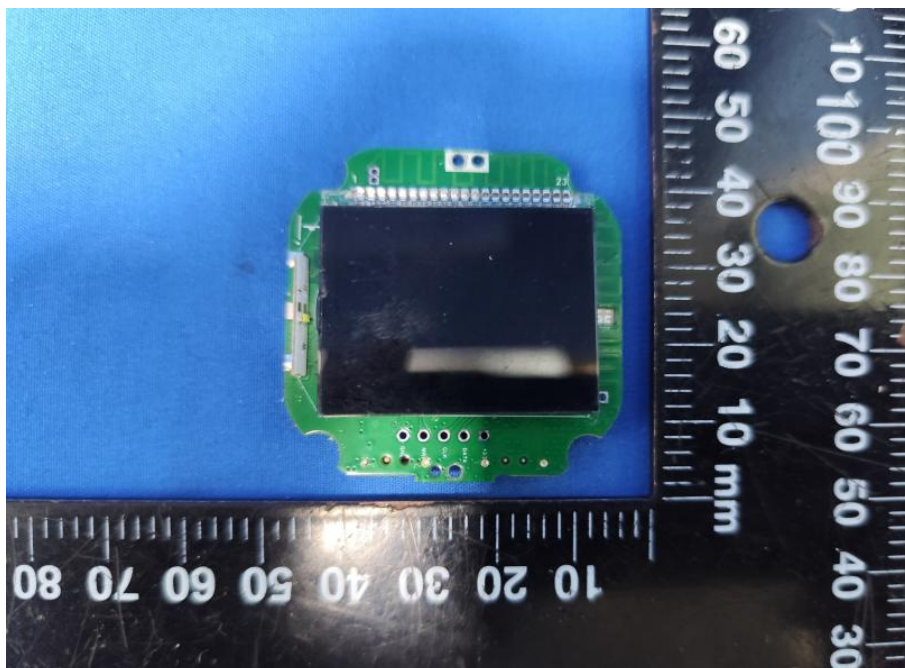




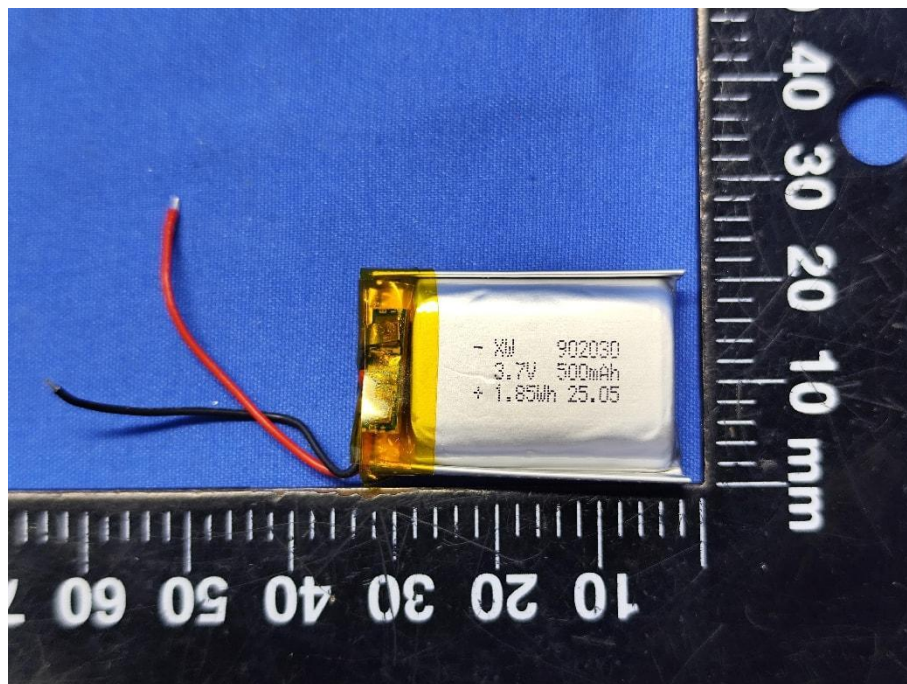
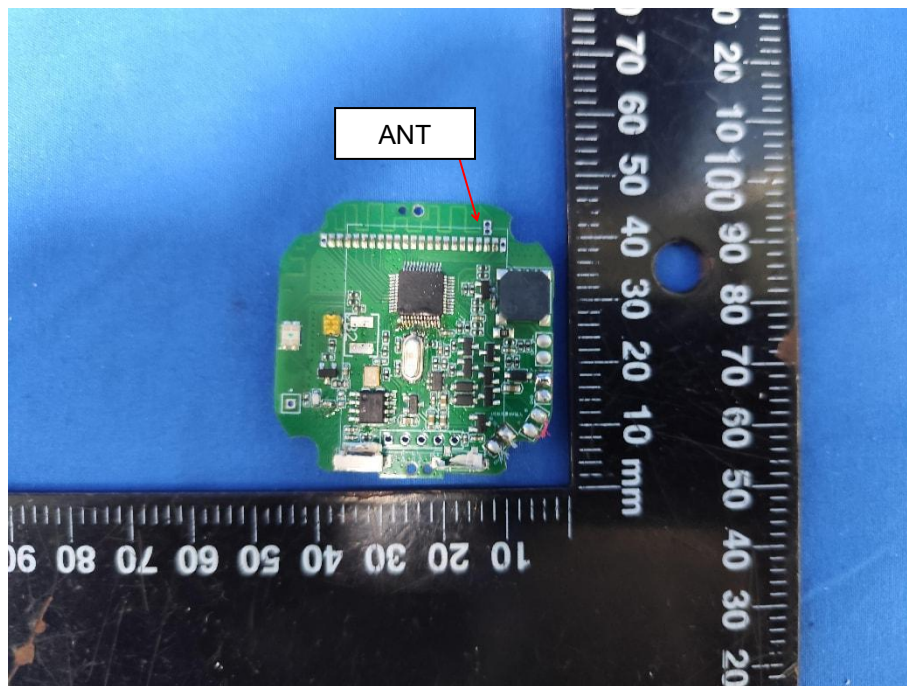


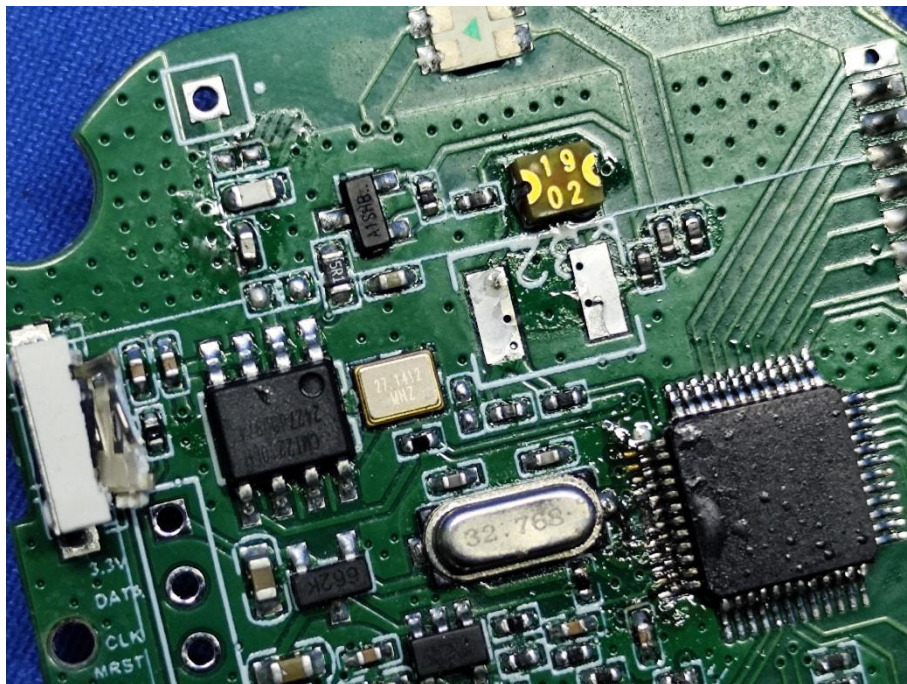
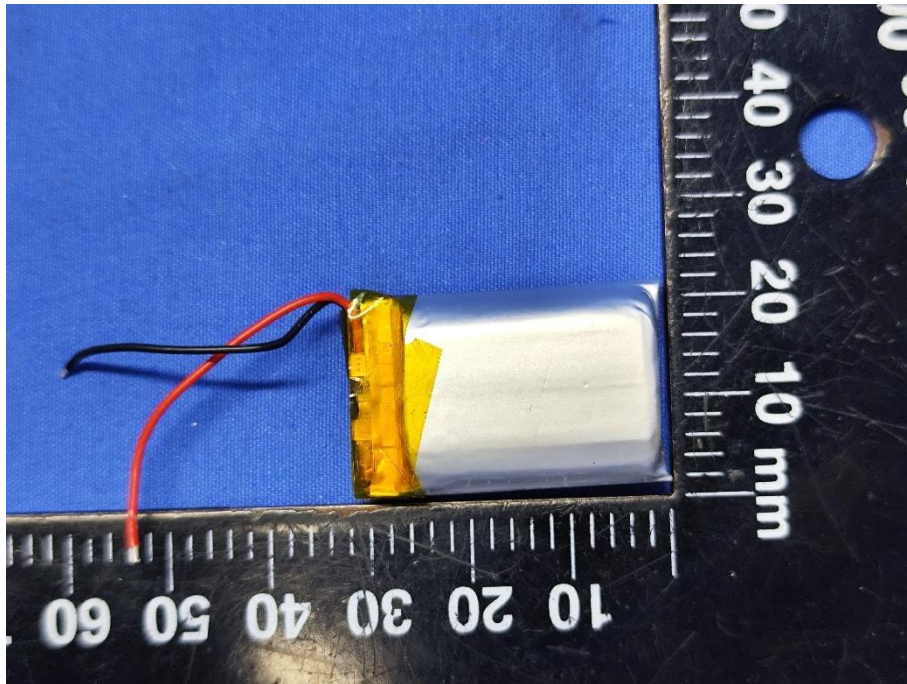


## 7.2 Internal photos









-----End of the report-----