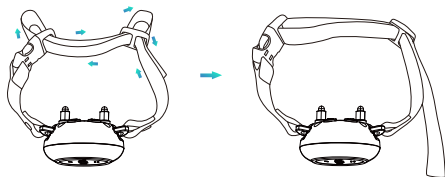


6. To attach the collar to the Receiver/Bark Control Collar, please follow the following steps as instructed to thread the strap.



CAUTION :

It is sometimes necessary to **trim the hair around the Contact Points** to make sure that contact is consistent.

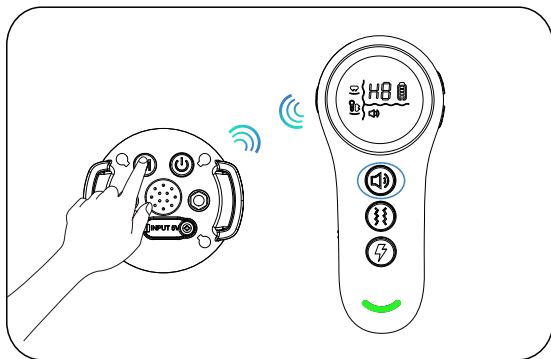
— **DO NOT** shave the dog's neck as this may increase the risk of skin irritation.

— **Check the fit regularly** to make your dog more comfortable with the Receiver/Bark Control Collar.

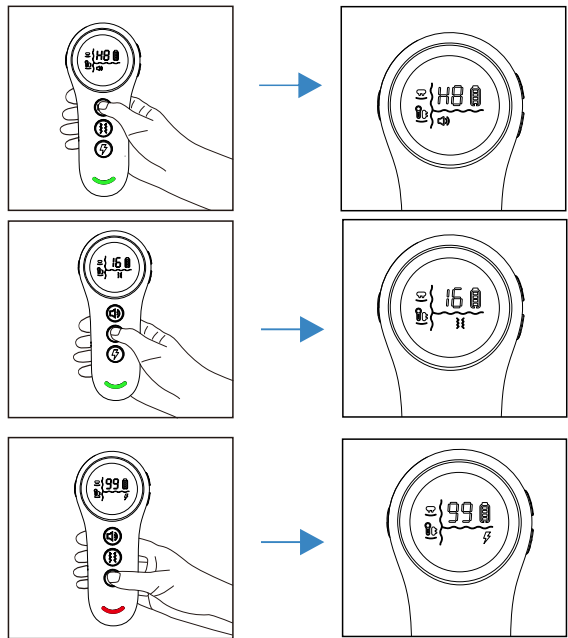
VIII. Pairing Up

In case of the Receiver/Bark Control Collar is not responding to the Remote Transmitter, follow these steps to pair them up:

1. Press the Mode Button on the Receiver/Bark Control Collar for 2 seconds to enter the Pairing Mode. You will hear a Beeping tone and the Dog Training Icon on the Receiver/Bark Control Collar blink rapidly. You will now have 10 seconds to finish the pairing.



2. Press the Warning Tone, Vibration or Shock Buttons on the Remote Transmitter, and the Receiver/Bark Control Collar will respond correspondingly indicating that the pairing process is completed.






Tips:

The Receiver/Bark Control Collar is paired to the Remote Transmitter by the factory default setting. If you find the Receiver/Bark Control Collar does not respond to the Remote Transmitter when you get the product or during use, please follow the above steps to pair the Receiver/Bark Control Collar to the Remote Transmitter again.

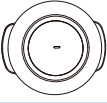
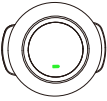
IX. Indicator Definitions

Remote Transmitter Indicator:

Charging	The Green Indicator light blinks slowly
Fully Charged	The Green Indicator light becomes solid

Press 	A Green Indicator light comes up
Press 	A Green Indicator light comes up
Press 	A Red Indicator light comes up

Receiver/Bark Control Collar Indicator :

	A white Indicator light comes up when the Warning Tone, Vibration and Shock function is activated
	Slowly blinking indicates the Receiver is on
	Fast blinking indicates the Receiver/Bark Control Collar is on charge
	Faster blinking indicates the Receiver battery is low

X. Training Tip

Important: Always start at the lowest level and work your way up. The Dog Training Mode has 8 types of Warning Tones, 16 levels of Vibration, and 99 levels of Shock. For Warning Tones, there are 8 types of Tones, with only frequency differences between the different types. For Vibration and Shock, level 1 is the lowest; the highest level for Vibration is level 16, and level 99 for Shock. This allows you to choose the Stimulation level that is best for your dog. Once you have placed the Receiver on your dog, it is time to find the Stimulation Level that is best for him. This is called the Recognition Level.

A slight change in your dog's behavior, such as looking around in curiosity, scratching at his collar, or flicking his ears, indicates the Recognition Level that is best for your dog.

Follow the steps below to find your dog's Recognition Level:

1. Starting at Level 1, press the Warning Tone/Vibration/Shock Button continuously for 1 to 2 seconds.

Note: When the Warning Tone/Vibration/Shock Button is held down for 10 consecutive seconds, the Remote Transmitter will "time out", and you must release and press the button again before additional stimulation can be delivered.

2. If your dog shows no reaction, repeat the Stimulation Level several times before moving up to the next level.

3. **YOUR DOG SHOULD NOT VOCALIZE OR PANIC WHEN RECEIVING STIMULATION. IF THIS HAPPENS, THE STIMULATION LEVEL IS TOO HIGH AND YOU NEED TO GO BACK TO THE PREVIOUS LEVEL AND REPEAT THE PROCESS.**

4. Move up through the Stimulation Levels until your dog reliably responds to the stimulation.

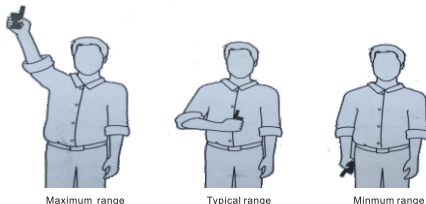
5. If your dog continues to show no response at the highest level of Vibration or Static Shock, check the fit of the Receiver. If your dog has long or thick hair, contact our Customer Care Center to obtain a longer set of Contact Points. Then go back to #1 and repeat the process. If this still does not yield any results, your dog's hair will need to be trimmed around the Contact Points.

If after completing all of these steps, your dog still does not indicate he is feeling the stimulation, please contact our customer service.

How to Maximize the distance?

Terrain, weather, vegetation, transmission from other radio devices, and other factors will affect the maximum range.

Hold the Remote Transmitter in a horizontal position away from your body to achieve optimum range. For maximum signal strength, keep the device properly charged.



*Avoid touching the antenna or the range may decrease substantially.

XI. Frequently Asked Questions

Q: Is the Stimulation safe for my dog?

A: While the Stimulation is unpleasant, it is harmless to your dog. Electronic training devices require interaction and training from the owner to achieve desired results.

Q: How old does my dog have to be before using the Dog Training Collar Mode?

A: Your dog should be able to recognize basic obedience commands such as "Sit" or "Stay". Dogs should be at least 6 months old before using the Trainer.

Q: Once my dog is trained and has been obeying my commands, will he have to continue to wear the Receiver/Bark Control Collar?

A: Probably not. You may need to reinforce training with the Receiver/Bark Control Collar from time to time.

Q: Is the Receiver/Bark Control Collar waterproof?

A: Yes. The Receiver/Bark Control Collar meets the IP67 waterproof rating, but make sure to keep the area dry when charging.

Note: Remote Transmitter is not waterproof.

Q: Will I get a maximum range with the Dog Training Collar Mode?

A: The range of the Dog Training Collar Mode will vary according to terrain, weather, vegetation, as well as transmission from other radio devices. See "How to Maximize the Distance" on page 24 for tips on maximizing your range.

Q: How long can I continuously deliver stimulation to my dog?

A: The maximum amount of time you can press the Warning Tone/Vibration/Shock button and deliver stimulation to your dog continuously is 10 seconds. After this, the Remote Transmitter will time out, and these stimulation buttons must be released and pressed again.

Q: Why doesn't the product work when the dog barks?

A: Please first ensure to fit the product snugly, yet loose enough to allow one finger to fit between the strap and your pet's neck. Some dogs have weak barking, and in this case, you will need to level up the sensitivity level. A thick coat on the neck area may also have a small chance to decrease the sensing from the barking. Please trim the coat near the area where you place the product.

Q: Why is the product triggered sometimes in a noisy environment though the dog isn't barking?

A: Though we have optimized the barking detection to the best, some environment noises may have a similar frequency to barking, which may have a small chance to activate the product. Please lower the sensitivity level.

Q: Can I use the product when other dogs are playing around?

A: Dogs will bark when playing and get excited. For the comfort and safety of your pet, we don't suggest using this product in such an environment.

Q: How do I know if I can use this product for my dog?

A: The product is designed for healthy dogs over 6 months old. Most importantly, this product cannot be used on unhealthy or aggressive dogs, and if you are unsure whether this product is appropriate for your pet, please consult your veterinarian or a certified trainer.

Q: Can this product stop my dog's howl?

A: No, this Bark Control Collar is designed to detect the barking only. It cannot detect or stop the howling.

Q: Can I charge this product with any type of charger?

A: No, you are suggested to charge this product with a charger of 5V output voltage, because a charger with an output voltage over 5V may cause damage to the product. The product will stop charging automatically if the input voltage becomes too high and deliver a warning tone.

Q: Will my dog stop barking completely?

A: The Bark Control Collar effectively and humanely stops all barking when it is worn. It should only be worn during periods of unwanted barking.

Q: Is the Bark Control Collar safe and humane?

A: Yes. The Bark Control Collar is designed to get your dog's attention, not to punish him. However, the initial Static Shock correction may startle your dog.

XII. Trouble Shooting

1. My dog does not respond when I press a button.

- Make sure the Receiver/Bark Control Collar has been turned on.
- If your range has reduced from the first time you used the Dog Training Collar Mode, the battery(-ies) may be low in either the Remote Transmitter or Receiver/Bark Control Collar.
- Many factors can impact the amount of range. For a list of these factors, see "How to Maximize the Distance" on page 24.
- Test the Receiver/Bark Control Collar with the Test Bulb.

NOTE: If the Test Bulb does not flash, recharge the Receiver/Bark Control Collar and re-test. If the Test Bulb Tool still does not flash, please contact our customer service.

- Increase the Stimulation Level. Refer to "Find the best stimulation for your dog" on page for more information.
- Make sure the Receiver/Bark Control Collar's Metal Prongs are placed snugly against your dog's skin. Refer to "Fitting the Receiver" on page for more information.

2. The Receiver/Bark Control Collar will not turn on.

- Make sure the Receiver/Bark Control Collar has been charged. For the initial charge, be sure to charge it for 4 hours. Subsequent charges only take 2-3 hours.

3. The Receiver/Bark Control Collar is not responding to the Remote Transmitter.

- Verify the Receiver/Bark Control Collar is on.
- If the indicator is blinking rapidly, fully charge the Receiver/Bark Control Collar.
- If the first two solutions did not resolve your problems, please check the "How to pair the Remote Transmitter & Receiver/Bark Control Collar" section.

XIII. FCC Statement

USA

This device complies with part 15 of the FCC Rules. Operation is subject to the following two conditions:

(1) This device may not cause harmful interference, and (2) this device must accept any interference received, including interference that may cause undesired operation.

NOTE:

This equipment has been tested and found to comply with the limits for a Class B digital device, pursuant to part 15 of the FCC Rules. These limits are designed to provide reasonable protection against harmful interference in a residential installation. This equipment generates, uses, and can radiate radio frequency energy and, if not installed and used in accordance with the instructions, may cause harmful interference to radio communications.

However, there is no guarantee that interference will not occur in a specific installation. If interference does occur to radio or television reception, which can be determined by turning the equipment off and on, the user is encouraged to try to correct the interference by one or more of the following measures:

- Reorient or relocate the receiving antenna.
Increase the separation between the equipment and the receiver.
- Connect the equipment to an outlet on a circuit different from that to which the receiver is connected.
- Consult customer care, the dealer, or an experienced radio/TV technician for help

Model: RS8
Made in China
Version: V1.0

This device complies with part 15 of the FCC Rules. Operation is subject to the following two conditions: (1) this device may not cause harmful interference, and

(2) This device must accept any interference received, including interference that may cause undesired operation.

Changes or modifications not expressly approved by the party responsible for compliance could void the user's authority to operate the equipment. This equipment has been tested and found to comply with the limits for a Class B digital device, pursuant to Part 15 of the FCC Rules. These limits are designed to provide reasonable protection against harmful interference in a residential installation. This equipment generates uses and can radiate radio frequency energy and, if not installed and used in accordance with the instructions, may cause harmful interference to radio communications. However, there is no guarantee that interference will not occur in a particular installation. If this equipment does cause harmful interference to radio or television reception, which can be determined by turning the equipment off and on, the user is encouraged to try to correct the interference by one or more of the following measures:

- - Reorient or relocate the receiving antenna.
- - Increase the separation between the equipment and receiver.
- - Connect the equipment into an outlet on a circuit different from that to which the receiver is connected.
- - Consult the dealer or an experienced radio/TV technician for help.ct.

The device has been evaluated to meet general RF exposure requirement.