

AssetTrac™

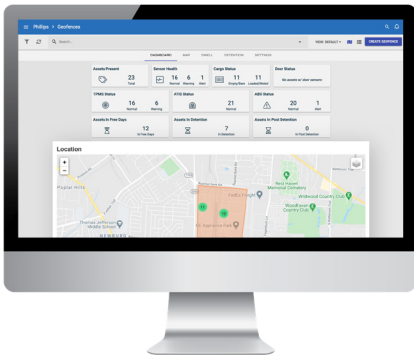
Track your assets, no tools required!

Cellular tracking with integrated power source.



Phillips Connect's best in class hardware with robust platform provides real-time tracking, analysis, and insights.

Ideal for any powered or non-powered assets. AssetTrac™ is a 4G LTE tracking solution designed for the toughest conditions.



Improve driver uptime and overall ROI with a complete view into your fleet.



AssetTrac™



AssetTrac™ Installed on asset

SOLUTION HIGHLIGHTS

- Manage and view your assets in the Phillips Connect User Interface
- Complete visibility and simple geofencing
- Automated alerts configurable in the Phillips Connect User Interface
- 3+ years of operation, up to 5,000 reports
- Customizable behavior
- Flawless operation in the harshest temperatures (-22°F to 158°F)
- Hourly reporting when in motion
- 2 reports per day when parked

POWERFUL COST SAVING TOOLS

- Do more with fewer assets
- Covert installations help eliminate asset theft and loss



Theft Recovery



GPS, Geofencing, Route Tracking



Waterproof



2 Minute Installation

833.213.5839
www.phillips-connect.com





FCC regulations:

This device complies with part 15 of the FCC rules. The operation is subject to the following two conditions: (1) this device must not cause harmful interference and (2) this device must accept any interference received, including interference that may cause unwanted operation.

This equipment has been tested and proven to meet the limits for a digital device class b, in accordance with part 15 of the FCC rules. These limits are designed to provide reasonable protection against harmful interference in a residential installation. This equipment generates, USES and can radiate radiofrequency energy and, if not installed and used according to instructions, can cause harmful interference with radio communications. However, there is no guarantee that there will be no interference in a particular installation. If this equipment causes harmful interference with radio or television reception, which can be determined by turning the equipment on and off, the user is recommended to try to correct the interference by one or more of the following measures:

- reorient or relocate the receiving antenna.
- increase the separation between equipment and receiver.
- connect the equipment to a power outlet on a different circuit than the one connected to the receiver.
- consult the dealer or an experienced radio/TV technician for assistance.

Changes or modifications not expressly approved by the manufacturer could override the user's authority to operate the equipment.

FCC statement of exposure to rf radiation

This equipment complies with the FCC radiation exposure limits set for an uncontrolled environment. To meet the FCC's rf exposure compliance requirements, this grant applies only to mobile configurations. Antennas used by the transmitter should be installed so as to provide a separation distance of at least 20 cm from all persons and should not be located or function in conjunction with any other antenna or transmitter.





IC STATEMENT

This device complies with Industry Canada license-exempt RSS standard(s). Operation is subject to the following two conditions: (1) this device may not cause interference, and (2) this device must accept any interference, including interference that may cause undesired operation of the device.

Le présent appareil est conforme aux CNR d'Industrie Canada applicables aux appareils radio exempts de licence. L'exploitation est autorisée aux deux conditions suivantes: (1) l'appareil ne doit pas produire de brouillage, et (2) l'utilisateur de l'appareil doit accepter tout brouillage radioélectrique subi, même si le brouillage est susceptible d'en compromettre le fonctionnement.

In order to avoid the possibility of exceeding the IC radio frequency exposure limits, human proximity to the antenna shall not be less than 20cm (8 inches) during normal operation.

Afin d'éviter la possibilité de dépasser les limites d'exposition aux fréquences radio de la IC CNR102, la proximité humaine à l'antenne ne doit pas être inférieure à 20 cm (8 pouces) pendant le fonctionnement normal.