

## Annex B.ii. Photograph: EUT Internal Photo

Cover Off - Top View 1



Cover Off - Top View 2



Battery - Front View



Battery - Rear View





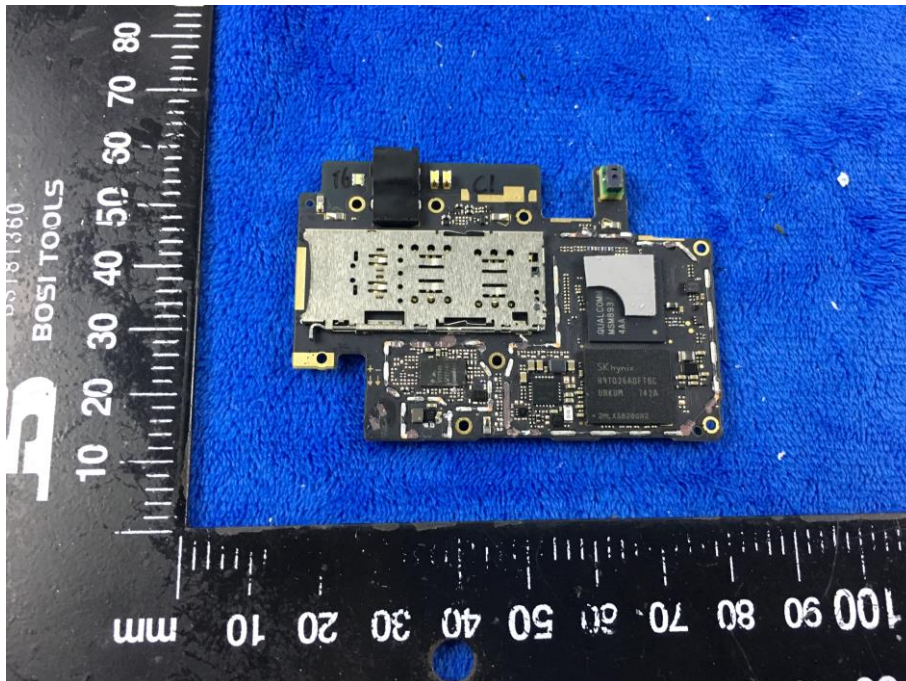
A photograph of a disassembled mobile phone. The internal components, including the motherboard, battery, and camera module, are laid out on a blue surface. A ruler is placed next to the components for scale. The ruler shows measurements in centimeters (0 to 10) and millimeters (0 to 10). The motherboard is black with various components, including a large silver battery, a camera module, and a small yellow label with 'C1' written on it. The battery has a white label with QR code and text: 'Q1408C V3', '40207510', '1210 3744', '02306137 BE000106'. The camera module has a yellow label with 'A330c' written on it. The text 'BS181360 BOSI TOOLS' is visible on the left side of the image.



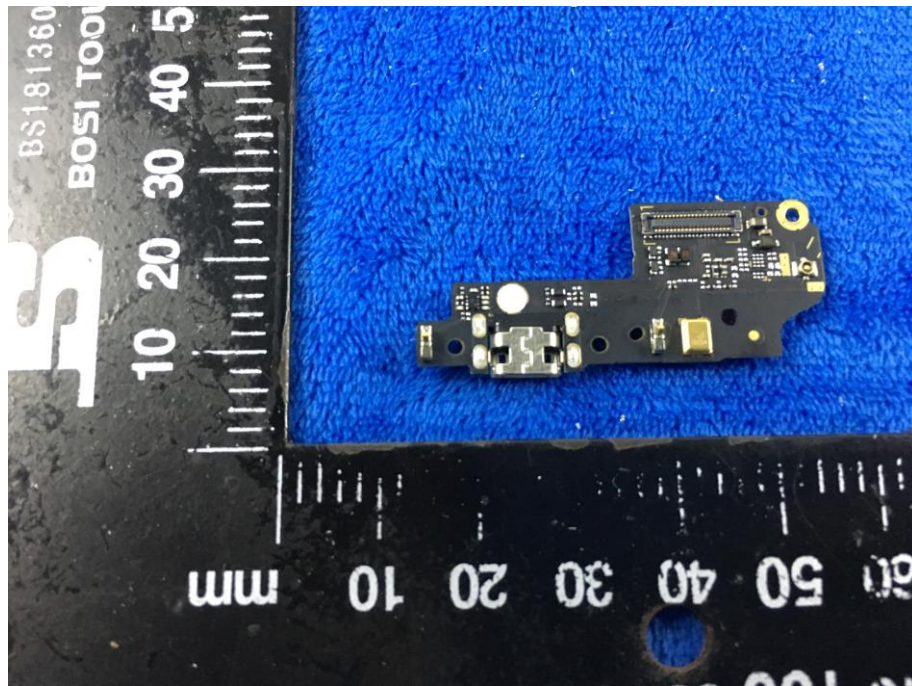
Mainboard without Shielding – Front View



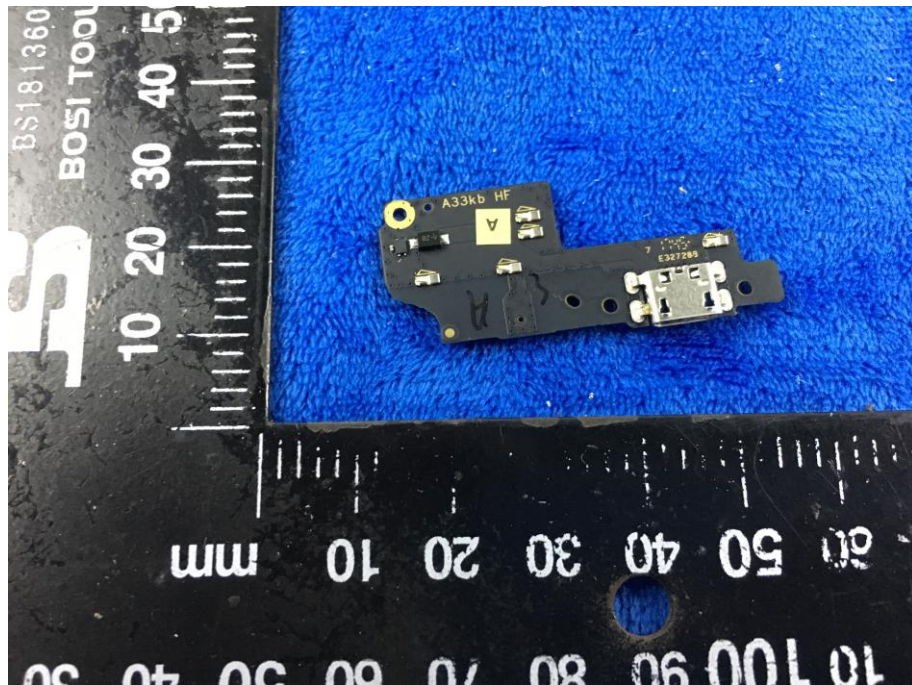
Mainboard without Shielding – Rear View



Smallboard – Front View



Smallboard – Rear View





LCD – Front View



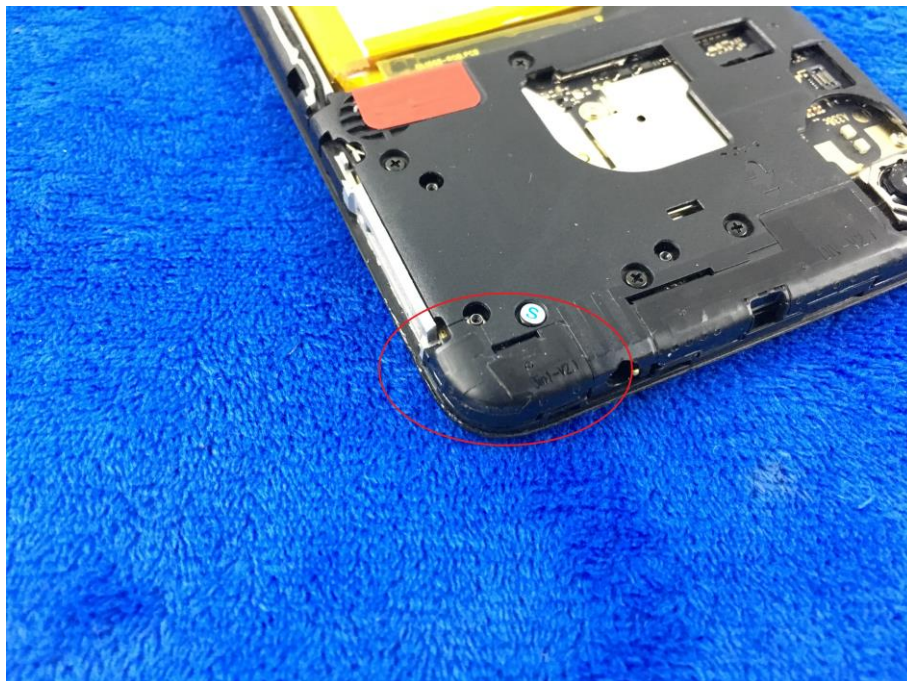
LCD – Rear View



GSM/PCS/U MTS-FDD/LTE Antenna View



WIFI/BT/BLE/GPS - Antenna View





RXD- Antenna View

