

BACK

**3 MONTHS FREE** **TIDAL**  
With purchase, Visit [jlabaudio.com/tidal](http://jlabaudio.com/tidal)

**Warm-up Your Headphones**  
Optional: Burn-in your audio equipment with the JLab Audio App or access the burn-in method at: [jlabaudio.com/burnin](http://jlabaudio.com/burnin)



JLab Audio + Burn-in Tool

## US Compliance

### FCC Information

This device complies with part 15 of the FCC Rules. Operation is subject to the following two conditions:  
(1) This device may not cause harmful interference, and  
(2) this device must accept any interference received, including interference that may cause undesired operation.

Any Changes or modifications not expressly approved by the party responsible for compliance could void the user's authority to operate the equipment.

Note: This equipment has been tested and found to comply with the limits for a Class B digital device, pursuant to part 15 of the FCC Rules. These limits are designed to provide reasonable protection against harmful interference in a residential installation. This equipment generates, uses, and can radiate radio frequency energy and, if not installed and used in accordance with the instructions, may cause harmful interference to radio communications. However, there is no guarantee that interference will not occur in a particular installation. If the equipment does cause harmful interference to radio or television reception, which can be determined by turning the equipment off and on, the user is encouraged to try to correct the interference by one or more of the following measures:

- Reorient or relocate the receiving antenna.
- Increase the separation between the equipment and receiver.
- Connect the equipment into an outlet on a circuit different from that to which the receiver is connected.
- Consult the dealer or an experienced radio/TV technician for help.

The device has been evaluated to meet general RF exposure requirements. The device can be used in portable exposure condition without restriction.

FCC ID: J4HHY-STUDIO3C

## EU Compliance



PLEASE READ JLab Audio hereby declares that this device is in compliance with the essential requirements and other relevant provisions of the RED directive.

A copy of the EU Declaration of Conformity is available at [jlabaudio.com/eucompliance](http://jlabaudio.com/eucompliance)

JLab Audio  
2091 Las Piedras Drive, Suite 101, Danville, CA 94511, USA



The symbol above indicates that the product and/or battery should not be disposed of with household waste. When you decide to dispose of this product and/or its battery, do so in accordance with local environmental laws and guidelines.

### Battery Caution & Disposal Information

Please take care of your battery. Do not disassemble, burn, puncture, crush or bend your battery. Improper operation of the battery may produce smoke. In such an event, ventilate the area. Extinguish any flames with carbon dioxide, dry powder fire extinguisher, or cover with sand or mud. Take care to avoid conditions of excessive moisture for prolonged periods and do not immerse. Do not expose to temperatures above 120°C (248°F). Charge battery fully before storage or if stored for longer than three months.

### Disposal

At the end of its life, please take care to dispose of this product responsibly. Electronic products and batteries contain materials that can be harmful to the environment. Please do not dispose to unrecycled waste. Take your electronic waste to a designated collection or recycling facility to be recycled properly. Your local council authority will be able to tell you where your nearest facilities are. There may be one at your local supermarket.

## QUICK START GUIDE

For full User Manual  
+ other JLab products visit



OFFICIAL AUDIO PARTNER OF MAJOR LEAGUE SOCCER

#FINDYOURGO

FRONT



USER  
MANUAL

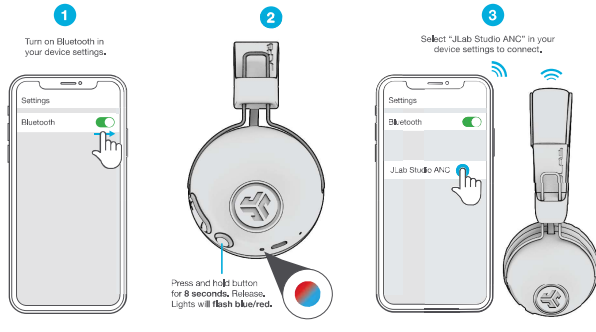
**Bluetooth**  
+ **ACTIVE NOISE CANCELING**

**2 ANC**  
MICROPHONES  
— NEUTRALIZE —  
AMBIENT NOISE

**Studio ANC**

with UNIVERSAL MIC + VOLUME & TRACK CONTROL

## BLUETOOTH PAIRING



## BUTTON FUNCTIONS

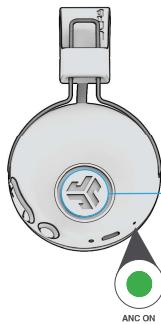
**VOLUME UP:**  
Press UP;  
**TRACK FORWARD:**  
Press and hold 2+ seconds;

**VOLUME DOWN:**  
Press DOWN;  
**TRACK BACKWARD:**  
Press and hold 2+ seconds;

**POWER ON/OFF:**  
Press and hold 2+ seconds;  
**PLAY/PAUSE/ANSWER/ HANG UP CALLS:**  
Press ON/OFF;

**REJECT INCOMING CALL:**  
Press and hold 1+ second;  
**ACTIVATE Siri (iOS) OR "OK GOOGLE" (Android):**  
Press twice;

**BLUETOOTH PAIRING:**  
See Bluetooth Pairing page;



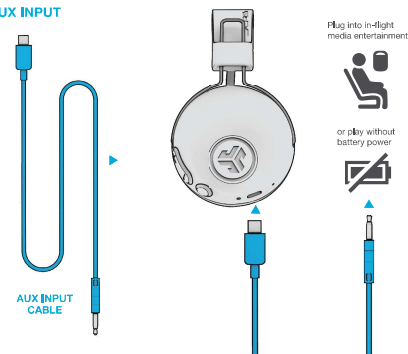
### CONNECTED TO BLUETOOTH:

Press once to Power ON/OFF;  
ON: 2 Beep OFF: 1 Beep

**CONNECTED TO AUX:**  
Press and hold 2+ seconds to power ON/OFF;  
ON: 2 Beep OFF: 1 Beep

ANC ON

## AUX INPUT



### NOTE:

- The ANC function can work when connected with AUX INPUT. Press and hold 2+ seconds the ANC button to Power ON/OFF.
- The AUX INPUT will override your Bluetooth device connection. Unplug to revert back to Bluetooth.
- The button functions for your Bluetooth device will not work when AUX INPUT is connected.
- The volume will be dependent on your AUX device settings. Adjust accordingly.

## CHARGING

