

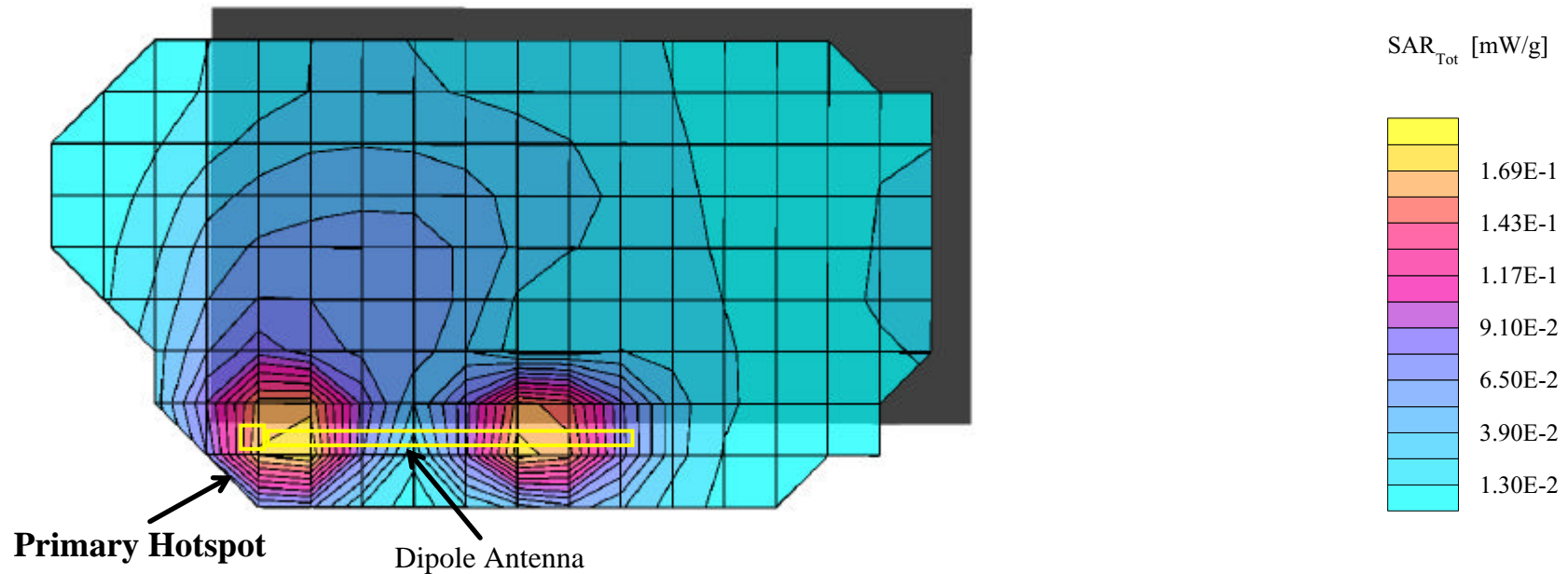
APPENDIX A - SAR MEASUREMENT DATA

Itronix Corporation FCC ID: KBCIX260A750MPIBT

SAM Phantom; Flat Section; Position: (0°,0°)
 Probe: ET3DV6 - SN1387; ConvF(4.90,4.90,4.90); Crest factor: 2.0
 1900 MHz Muscle: $\sigma = 1.55$ mho/m $\epsilon_r = 51.1$ $\rho = 1.00$ g/cm³
 Coarse: Dx = 15.0, Dy = 15.0, Dz = 10.0
 Cube 5x5x7
 SAR (1g): 0.192 mW/g, SAR (10g): 0.111 mW/g

Body SAR - Back of LCD Display (Closed) - Antenna Parallel to Planar Phantom (Stowed Position)
 1.5 cm Separation Distance from Back of LCD Display to Planar Phantom
 Itronix IX260 Rugged Laptop PC
 with Sierra Wireless AirCard 750 PCS GSM/GPRS Modem Card
 co-located with Cisco MPI-350 Mini-PCI DSSS WLAN Card
 PCS GPRS Mode
Single Transmit - PCS GPRS only
 Channel 661 [1880.00 MHz]
 Conducted Power: 27.9 dBm
 Ambient Temp: 22.8°C; Fluid Temp: 23.1°C
 Date Tested: March 24, 2003

Primary Hotspot Evaluation

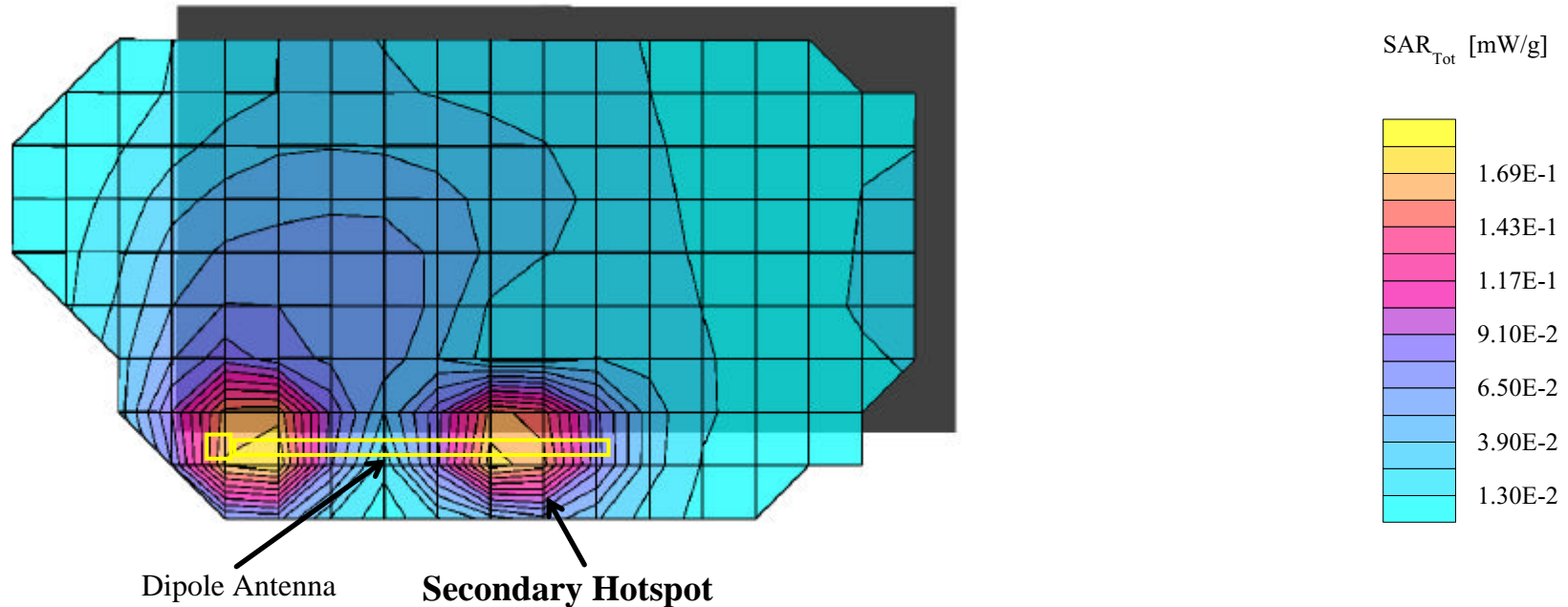


Itronix Corporation FCC ID: KBCIX260A750MPIBT

SAM Phantom; Flat Section; Position: (0°,0°)
 Probe: ET3DV6 - SN1387; ConvF(4.90,4.90,4.90); Crest factor: 2.0
 1900 MHz Muscle: $\sigma = 1.55$ mho/m $\epsilon_r = 51.1$ $\rho = 1.00$ g/cm³
 Coarse: Dx = 15.0, Dy = 15.0, Dz = 10.0
 Cube 5x5x7
 SAR (1g): 0.189 mW/g, SAR (10g): 0.108 mW/g

Body SAR - Back of LCD Display (Closed) - Antenna Parallel to Planar Phantom (Stowed Position)
 1.5 cm Separation Distance from Back of LCD Display to Planar Phantom
 Itronix IX260 Rugged Laptop PC
 with Sierra Wireless AirCard 750 PCS GSM/GPRS Modem Card
 co-located with Cisco MPI-350 Mini-PCI DSSS WLAN Card
 PCS GPRS Mode
Single Transmit - PCS GPRS only
 Channel 661 [1880.00 MHz]
 Conducted Power: 27.9 dBm
 Ambient Temp: 22.8°C; Fluid Temp: 23.1°C
 Date Tested: March 24, 2003

Secondary Hotspot Evaluation



Itronix Corporation FCC ID: KBCIX260A750MPIBT

SAM Phantom; Flat Section; Position: (0°,0°)
 Probe: ET3DV6 - SN1387; ConvF(4.90,4.90,4.90); Crest factor: 2.0
 1900 MHz Muscle: $\sigma = 1.55$ mho/m $\epsilon_r = 51.1$ $\rho = 1.00$ g/cm³
 Coarse: Dx = 15.0, Dy = 15.0, Dz = 10.0

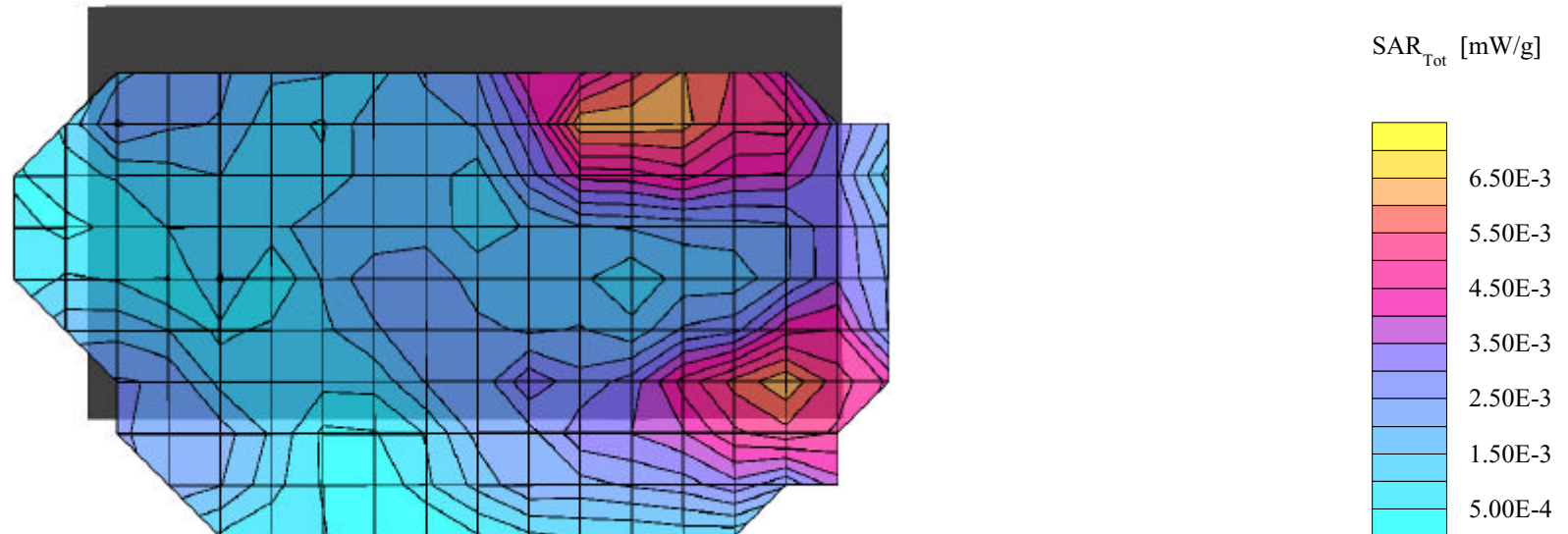
Body SAR - Back of LCD Display (Closed) - Antenna Parallel to Planar Phantom (Stowed Position)
 1.5 cm Separation Distance from Back of LCD Display to Planar Phantom

Itronix IX260 Rugged Laptop PC
 with Sierra Wireless AirCard 750 PCS GSM/GPRS Modem Card
 co-located with Cisco MPI-350 Mini-PCI DSSS WLAN Card
 PCS GPRS Mode

Single Transmit - PCS GPRS only

Channel 661 [1880.00 MHz]
 Conducted Power: 27.9 dBm
 Ambient Temp: 22.8°C; Fluid Temp: 23.1°C
 Date Tested: March 24, 2003

Coarse scan to show Left Half of LCD Display (Back Side)



Itronix Corporation FCC ID: KBCIX260A750MPIBT

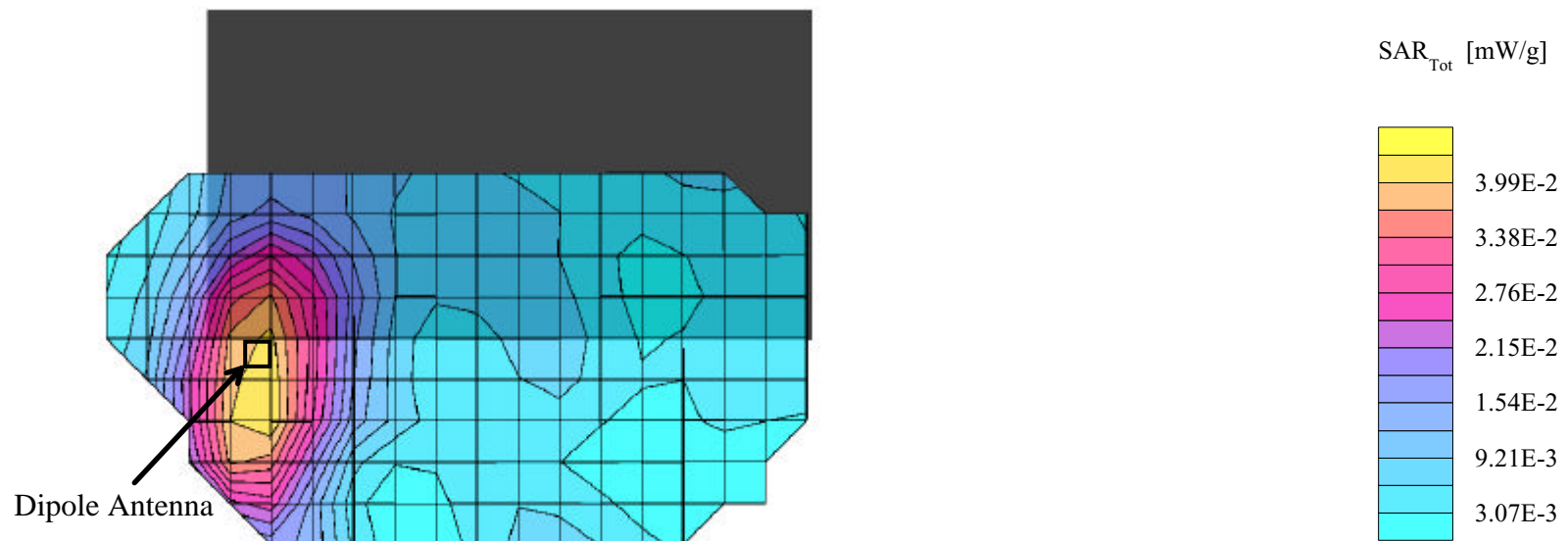
SAM Phantom; Flat Section; Position: (0°,0°)
 Probe: ET3DV6 - SN1387; ConvF(4.90,4.90,4.90); Crest factor: 2.0
 1900 MHz Muscle: $\sigma = 1.55$ mho/m $\epsilon_r = 51.1$ $\rho = 1.00$ g/cm³
 Coarse: Dx = 15.0, Dy = 15.0, Dz = 10.0
 Cube 5x5x7
 SAR (1g): 0.0361 mW/g, SAR (10g): 0.0229 mW/g

Body SAR - Back of LCD Display (Closed) - Antenna Perpendicular to Planar Phantom (180°)
 1.5 cm Separation Distance from Back of LCD Display to Planar Phantom

Itronix IX260 Rugged Laptop PC
 with Sierra Wireless AirCard 750 PCS GSM/GPRS Modem Card
 co-located with Cisco MPI-350 Mini-PCI DSSS WLAN Card
 PCS GPRS Mode

Single Transmit - PCS GPRS only

Channel 661 [1880.00 MHz]
 Conducted Power: 27.9 dBm
 Ambient Temp: 22.8°C; Fluid Temp: 23.1°C
 Date Tested: March 24, 2003

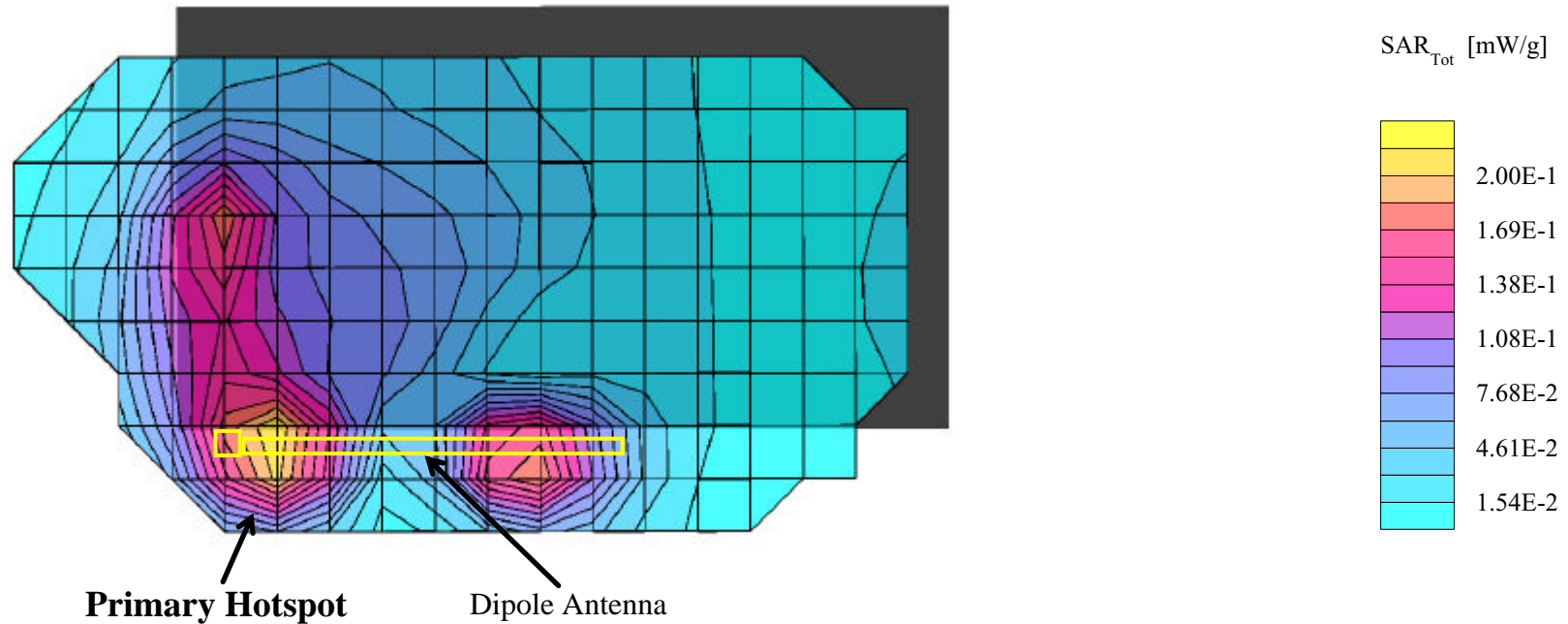


Itronix Corporation FCC ID: KBCIX260A750MPIBT

SAM Phantom; Flat Section; Position: (0°,0°)
 Probe: ET3DV6 - SN1387; ConvF(4.90,4.90,4.90); Crest factor: 2.0
 1900 MHz Muscle: $\sigma = 1.55$ mho/m $\epsilon_r = 51.1$ $\rho = 1.00$ g/cm³
 Coarse: Dx = 15.0, Dy = 15.0, Dz = 10.0
 Cube 5x5x7
 SAR (1g): 0.215 mW/g, SAR (10g): 0.123 mW/g

Body SAR - Back of LCD Display (Closed) - Antenna Parallel to Planar Phantom (Stowed Position)
 1.5 cm Separation Distance from Back of LCD Display to Planar Phantom
 Itronix IX260 Rugged Laptop PC
 with Sierra Wireless AirCard 750 PCS GSM/GPRS Modem Card
 co-located with Cisco MPI-350 Mini-PCI DSSS WLAN Card
 PCS GPRS Mode
Simultaneous Transmit with co-located DSSS WLAN Card
 Channel 661 [1880.00 MHz]
 Conducted Power: 27.9 dBm
 Ambient Temp: 22.8°C; Fluid Temp: 23.1°C
 Date Tested: March 24, 2003

Primary Hotspot Evaluation

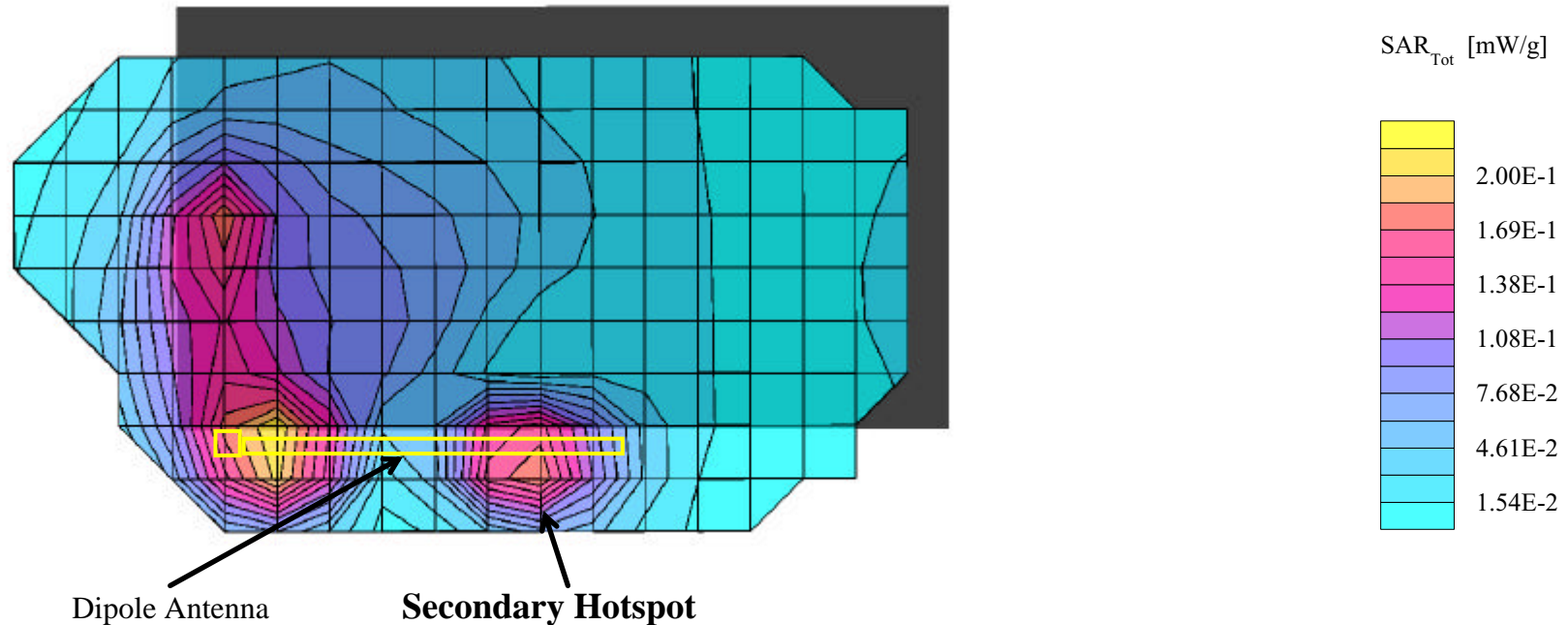


Itronix Corporation FCC ID: KBCIX260A750MPIBT

SAM Phantom; Flat Section; Position: (0°,0°)
 Probe: ET3DV6 - SN1387; ConvF(4.90,4.90,4.90); Crest factor: 2.0
 1900 MHz Muscle: $\sigma = 1.55$ mho/m $\epsilon_r = 51.1$ $\rho = 1.00$ g/cm³
 Coarse: Dx = 15.0, Dy = 15.0, Dz = 10.0
 Cube 5x5x7
 SAR (1g): 0.187 mW/g, SAR (10g): 0.108 mW/g

Body SAR - Back of LCD Display (Closed) - Antenna Parallel to Planar Phantom (Stowed Position)
 1.5 cm Separation Distance from Back of LCD Display to Planar Phantom
 Itronix IX260 Rugged Laptop PC
 with Sierra Wireless AirCard 750 PCS GSM/GPRS Modem Card
 co-located with Cisco MPI-350 Mini-PCI DSSS WLAN Card
 PCS GPRS Mode
Simultaneous Transmit with co-located DSSS WLAN Card
 Channel 661 [1880.00 MHz]
 Conducted Power: 27.9 dBm
 Ambient Temp: 22.8°C; Fluid Temp: 23.1°C
 Date Tested: March 24, 2003

Secondary Hotspot Evaluation



Itronix Corporation FCC ID: KBCIX260A750MPIBT

SAM Phantom; Flat Section; Position: (0°,0°)
 Probe: ET3DV6 - SN1387; ConvF(4.90,4.90,4.90); Crest factor: 2.0
 1900 MHz Muscle: $\sigma = 1.55$ mho/m $\epsilon_r = 51.1$ $\rho = 1.00$ g/cm³
 Coarse: Dx = 15.0, Dy = 15.0, Dz = 10.0

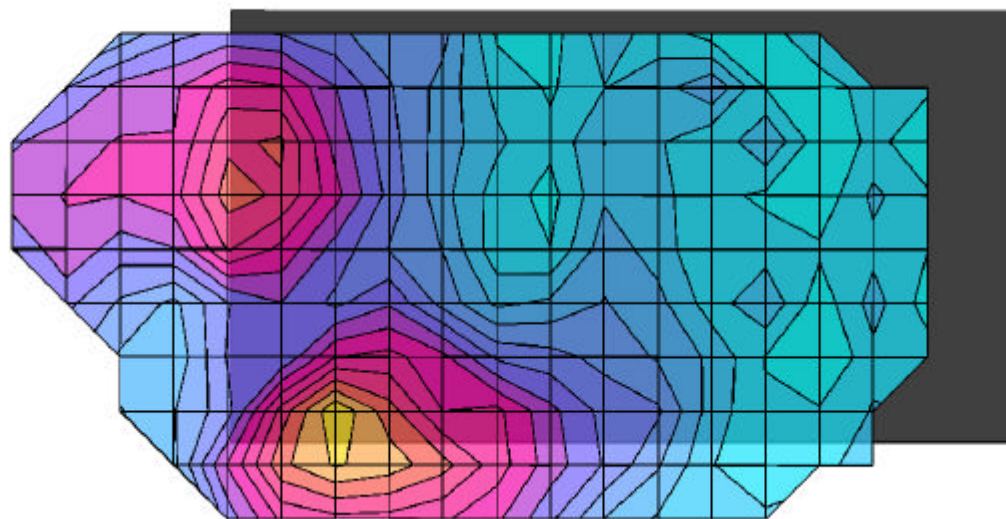
Body SAR - Back of LCD Display (Closed) - Antenna Parallel to Planar Phantom (Stowed Position)
 1.5 cm Separation Distance from Back of LCD Display to Planar Phantom

Itronix IX260 Rugged Laptop PC
 with Sierra Wireless AirCard 750 PCS GSM/GPRS Modem Card
 co-located with Cisco MPI-350 Mini-PCI DSSS WLAN Card
 PCS GPRS Mode

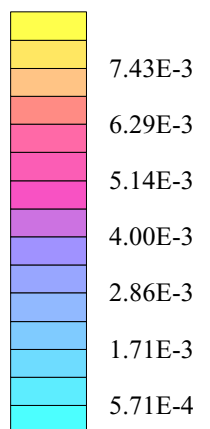
Simultaneous Transmit with co-located DSSS WLAN Card

Channel 661 [1880.00 MHz]
 Conducted Power: 27.9 dBm
 Ambient Temp: 22.8°C; Fluid Temp: 23.1°C
 Date Tested: March 24, 2003

Coarse scan to show Left Half of LCD Display (Back Side)



SAR_{Tot} [mW/g]



Itronix Corporation FCC ID: KBCIX260A750MPIBT

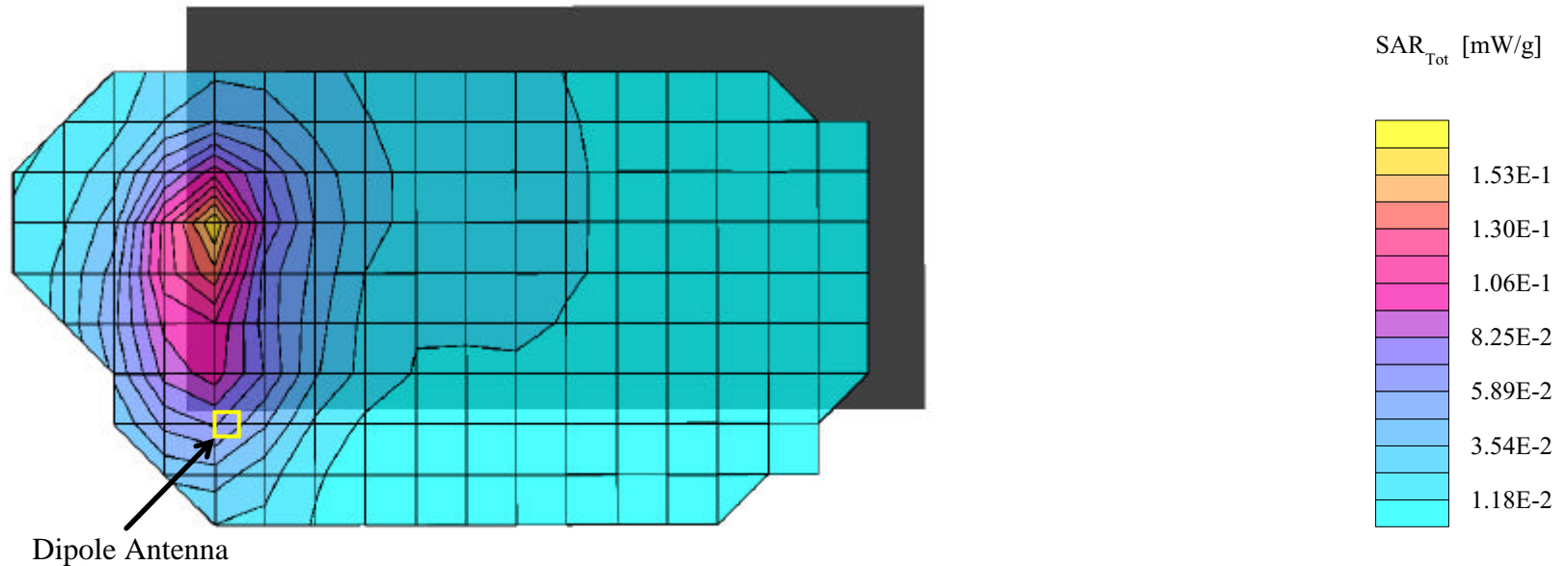
SAM Phantom; Flat Section; Position: (0°,0°)
Probe: ET3DV6 - SN1387; ConvF(4.90,4.90,4.90); Crest factor: 2.0
1900 MHz Muscle: $\sigma = 1.55$ mho/m $\epsilon_r = 51.1$ $\rho = 1.00$ g/cm³
Coarse: Dx = 15.0, Dy = 15.0, Dz = 10.0
Cube 5x5x7
SAR (1g): 0.149 mW/g, SAR (10g): 0.0791 mW/g

Body SAR - Back of LCD Display (Closed) - Antenna Perpendicular to Planar Phantom (180°)
1.5 cm Separation Distance from Back of LCD Display to Planar Phantom

Itronix IX260 Rugged Laptop PC
with Sierra Wireless AirCard 750 PCS GSM/GPRS Modem Card
co-located with Cisco MPI-350 Mini-PCI DSSS WLAN Card
PCS GPRS Mode

Simultaneous Transmit with co-located DSSS WLAN Card

Channel 661 [1880.00 MHz]
Conducted Power: 27.9 dBm
Ambient Temp: 22.8°C; Fluid Temp: 23.1°C
Date Tested: March 24, 2003



Itronix Corporation FCC ID: KBCIX260A750MPIBT

SAM Phantom; Flat Section; Position: (0°,0°)
 Probe: ET3DV6 - SN1387; ConvF(4.90,4.90,4.90); Crest factor: 2.0
 1900 MHz Muscle: $\sigma = 1.55$ mho/m $\epsilon_r = 51.1$ $\rho = 1.00$ g/cm³
 Coarse: Dx = 15.0, Dy = 15.0, Dz = 10.0
 Cube 5x5x7
 SAR (1g): 0.0537 mW/g, SAR (10g): 0.0347 mW/g

Body SAR - Bottom of Laptop PC (LCD Display Closed) - Antenna Parallel to Planar Phantom (Stowed Position)
 0.0 cm Separation Distance from Bottom of Laptop PC to Planar Phantom
 Itronix IX260 Rugged Laptop PC
 with Sierra Wireless AirCard 750 PCS GSM/GPRS Modem Card
 co-located with Cisco MPI-350 Mini-PCI DSSS WLAN Card
 PCS GPRS Mode
Single Transmit - PCS GPRS only
 Channel 661 [1880.00 MHz]
 Conducted Power: 27.9 dBm
 Ambient Temp: 22.8°C; Fluid Temp: 23.1°C
 Date Tested: March 24, 2003

