

整张大小:750x102mm

整张材质:105g双铜纸

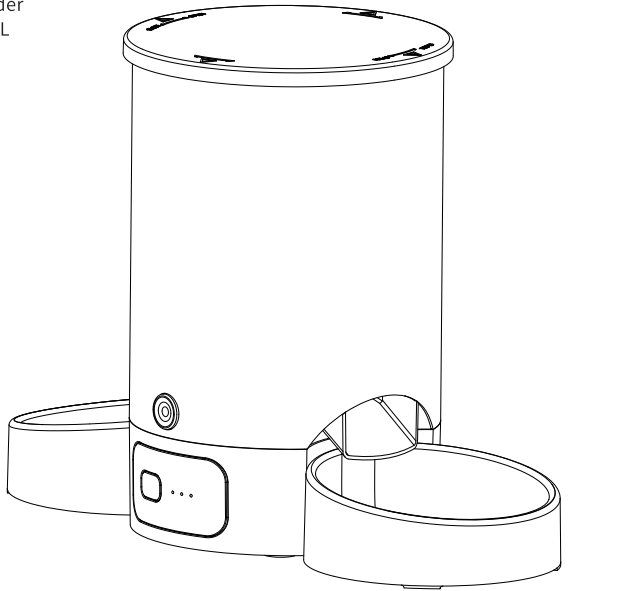
单个折页大小:125X102mm



虚线代表折线

# USER MANUAL

Automatic Pet Feeder  
2.4G WiFi Control 3L



**! Please read this manual before using the product and keep it for future reference.**



Smart Life



## NOTICE

- Recommended to use pet food with a diameter of 5-15mm, any shape is acceptable. Do not place wet food or other types of food.
- Please place the device correctly to prevent pets from knocking it over; it is recommended to place it in a corner or against a wall.
- Regularly replace the desiccant in the moisture-proof box and other items with moisture-proof functions if they are stored; otherwise, no need to replace.
- Regularly check and ensure that the grain bin is in a dry and sealed state. In case of problems such as damp or spoiled pet food, deal with it promptly.
- Regularly clean the feeding bowl to prevent the growth of bacteria. If cleaning is needed, wipe the feeding bowl dry before putting it back in the bowl holder.

- Do not put substances other than pet food in the grain bin to avoid abnormal device operation, food spoilage, and harm to pet health.
- The product's power cord should be hidden as much as possible to prevent pets from chewing or scratching it, causing damage.
- If the feeder is without power for a long time, you may need to reset the time or feeding schedule after reconnecting the power.

• This device is not recommended for use with young pets within three months.

• Children should not use it alone.

• The feeder must be used with a standard power socket and should be kept separate from other electrical appliances.

• Ensure that the voltage used matches the relevant power parameters indicated for the feeder.

• Avoid forcefully pulling the power cord; if the power cord or plug is damaged, stop using it immediately.

• Avoid subjecting the feeder to strong impacts.

\*Please carefully read the warnings and precautions; failure to comply will be at your own risk.

## DAILY FEEDING

(cat) Month	1~2	2~4	4~6	6~8	8~12
Suggest	20~30g	30~50g	50~70g	70~80g	80~90g

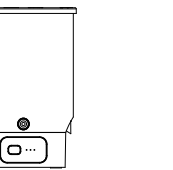
(cat) weight	2~3kg	3~5kg	5~7kg	pregnancy	Lactation period
Suggest	25~35g	35~55g	55~85g	70~110g	120~190g

(dog) weight	Normal activity	Increase	(dog) weight	Normal activity	Increase
2kg	39g	45g	8kg	111g	128g
4kg	66g	76g	10kg	131g	152g
6kg	89g	104g	12kg	150g	174g

(dog) weight	Normal activity	Increase
14kg	178g	206g 235g
16kg	197g	228g 259g
18kg	197g	228g 259g

**If the pet fail to eat up the previous programmed meal, please reduce the next meal portion**

## IN THE BOX



Automatic Pet Feeder (X1)



Stainless Steel Bowl (X2)



Desiccant Bag (X1)



Bowl Tray (X2)



5V/1A Power Adapter (X1)

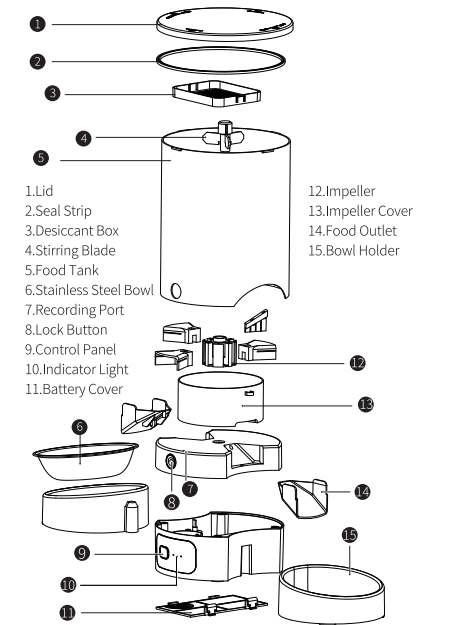


Type-C Power Cable (X1)

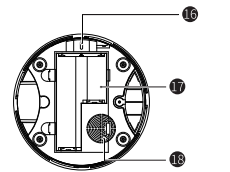


User Manual (X1)

## PRODUCT OVERVIEW



- 1.Lid
- 2.Seal Strip
- 3.Desiccant Box
- 4.Stirring Blade
- 5.Food Tank
- 6.Stainless Steel Bowl
- 7.Recording Port
- 8.Lock Button
- 9.Control Panel
- 10.Indicator Light
- 11.Battery Cover
- 12.Impeller
- 13.Impeller Cover
- 14.Food Outlet
- 15.Bowl Holder

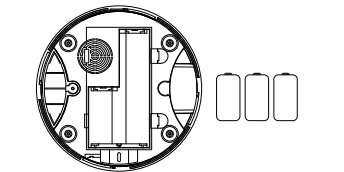


- 16.Power Outlet
- 17.Battery Compartment
- 18.Speaker

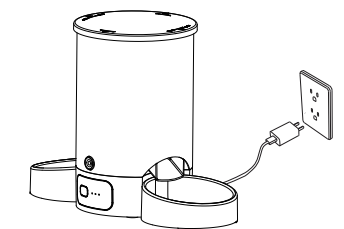
Indicator Type	Steady	Flashing
Red	/	The device is connectin Wi-Fi
Yellow	Network configuration mode	/
Blue	Wi-Fi is connected	/

## GETTING STARTED

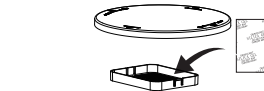
- 1 Install three D alkaline batteries into the battery compartment in case of a power outage.



- 2 Connect the feeder to a wall outlet with the power adapter and power cable, and it automatically turns on.

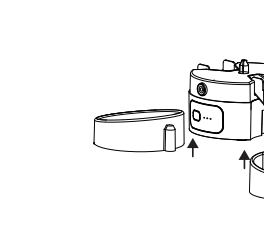


- 3 Place the desiccant bag in the desiccant bag holder under the lid.

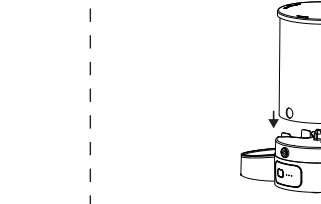


\* Desiccant bag should be replaced every 15 days. Do not drop it into the grain bin, and do not use if damaged.

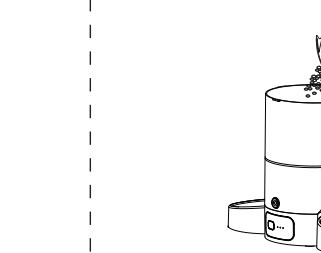
- 4 Install the stainless steel bowl and bowl tray.



- 5 Align the locking latch on the grain bin with the locking buttons on the base, then simultaneously press both locking buttons to secure the grain bin in place.



- 6 Add dry pet food to the food tank.



## APP CONTROL

### Install the app log in

- 1.Scan the QR code below or search "Smart Life-Smart Living" in the App Store or Google Play to download the app.
- 2.Sign up and log into your account.



### Network,router system requirements

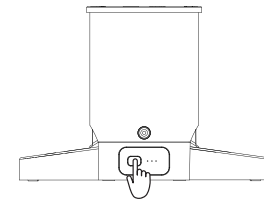
Keep the feeder close to your router for a better Wi-Fi connection. The ideal range is within 6m(19.7ft) without obstacles and walls. Supports iPhones running iOS 12.0 or later and Android smartphones running Android 5.0 or later.

## 1、Automatically add the device

- ① Turn on the WIFI,Bluetooth and location services on your phone before adding a device.



- ② Press and hold the device button for 5 seconds. The indicator light will flash red, and you will hear a beep, indicating that it has entered networking mode. Once successfully connected, the indicator light will stay blue.

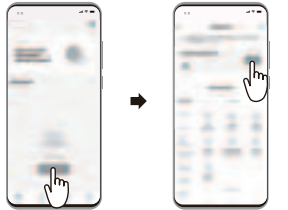


-06-

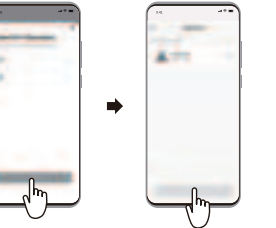
- ③ Open the app and sign up and log into your account.



- ④ The app will automatically search nearby devices. Tap the device you want to add and follow the on-screen instructions.



- ⑤ Follow the on-screen instructions to input the correct Wi-Fi password (this step will be omitted if Wi-Fi has been previously connected). Wait for a successful connection. In case of binding failure, you can retry the binding process.

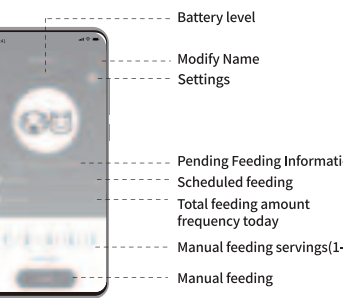


If the device search is unsuccessful, please use the pre-downloaded 'Smart Life' app. Scan the QR code provided in the app to establish a direct connection with the device.

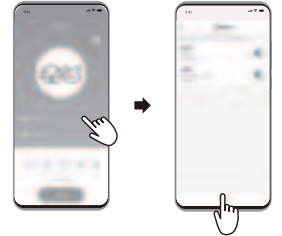


-07-

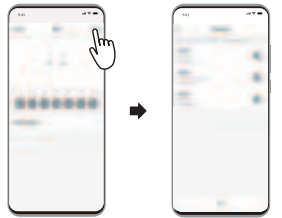
- ⑥ Device controls & settings



- ⑦ Click on Feeding Schedule, then click Add.

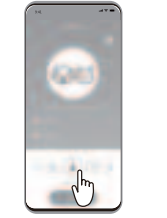


According to your pet's eating habits, you can set the desired feeding time and portion.

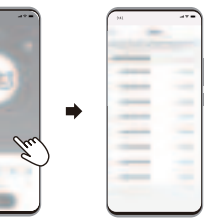


-08-

- ⑧ Click on Manual Feeding, then click on Feeding Portions, you can manually add extra food.



- ⑨ Click on Feeding Records to view the feeding history.



## 2、Troubleshooting Tips

- ① Please connect the external power supply before downloading the program.
- ② Support 2.4GHz
- ③ The distance between feeder and home WiFi should not be too far. Make sure both can be connected.



## SPECIFICATIONS

Product name:	Smart pet feeder
Model:	Habas21
Capacity:	3L
Working power:	5V 1A/2A
Connection:	Wi-Fi(2.4GHz)
Distance restrictions:	No distance limit
Product size:	395X183X275mm
Product net weight:	1.6Kg
Battery:	3 x D-size alkaline batteries (Not included)
Product material:	ABS/304 stainless steel bowl

-09-

## Q&A TROUBLE SHOOTING

**Q: Why feed on the APP but no food dispensing from the feeder?**

A: If the APP shows the feeding has been succeeded but no food dispensing from the feeder. Firstly suggest to check if the food tank got enough food. Secondly if the impellers have been rotated normally. (You can judge from the sound). Thirdly suggest to feed again for few more times to avoid the signal delay cause for the troubles. (Internet delay).

**Q: Why I can not login my Smart life account?**

A: Firstly, please check if the feeder has been connected to the WiFi properly. Secondly, please check if the account has been occupied by others. Suggest to unload and Reinstall the APP.

**Q: Is it possible to set up a feeder schedule when the feeder is on battery power?**

A: When powered by battery only, you can use all the functions of the APP including setting a new feeding schedule. In the networked state, the device consumes more power to run all functions, and can only support less than a day with battery power only. (It is recommended to use both battery and power supply in daily use).

## WARRANTY

- 12-month warranty.
- For guidance on product use, please contact our customer service team

Automatic Pet Feeder-WiFi Control 3L

**Model:** Habas21

**Manufacturer:** Shenzhen Tucworm Network Technology Co., Ltd

**Address:** Room 6218, Yikang Business Building, 33 Huarong Road, Longhua District, Shenzhen

**Made in China**



This device complies with Part 15 of the FCC Rules. Operation is subject to the following two conditions: (1) this device may not cause harmful interference, and (2) this device must accept any interference received, including interference that may cause undesired operation.

-10-

-11-

#### FCC Warning

This device complies with part 15 of the FCC rules. Operation is subject to the following two conditions: (1) this device may not cause harmful interference, and (2) this device must accept any interference received, including interference that may cause undesired operation.

Changes or modifications not expressly approved by the party responsible for compliance could void the user's authority to operate the equipment.

NOTE: This equipment has been tested and found to comply with the limits for a Class B digital device, pursuant to part 15 of the FCC Rules. These limits are designed to provide reasonable protection against harmful interference in a residential installation. This equipment generates uses and can radiate radio frequency energy and, if not installed and used in accordance with the instructions, may cause harmful interference to radio communications. However, there is no guarantee that interference will not occur in a particular installation. If this equipment does cause harmful interference to radio or television reception, which can be determined by turning the equipment off and on, the user is encouraged to try to correct the interference by one or more of the following measures:

- Reorient or relocate the receiving antenna.
- Increase the separation between the equipment and receiver.
- Connect the equipment into an outlet on a circuit different from that to which the receiver is connected.
- Consult the dealer or an experienced radio/TV technician for help.

#### Radiation Exposure Statement

This equipment complies with FCC radiation exposure limits set forth for an uncontrolled environment. This equipment should be installed and operated with minimum distance 20cm between the radiator and your body.