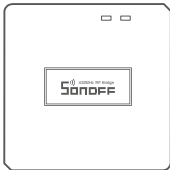


# **SONOFF**

## **RF Bridge**

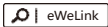
User Manual V1.0



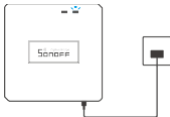
433MHz RF Bridge

# Operating Instruction

## 1. Download APP



## 2. Power on



After powering on, the device will enter the quick pairing mode (Touch) during the first use. The Wi-Fi LED indicator changes in a cycle of two short and one long flash.

- ⓘ The device will exit the quick pairing mode (Touch) if not paired within 3mins. If you want to enter this mode, please long press the pairing button for about 5s until the Wi-Fi LED indicator changes in a cycle of two short and one long flash and release.

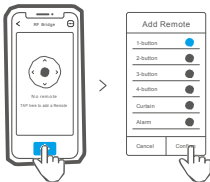


### 3. Add Bridge



Tap “+” and select “Quick Pairing”, then operate following the prompt on the APP.

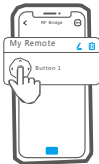
## 4. Add Remote



Tap "+" select the corresponding device type on APP, then proceed to "Confirm".

ⓘ RF Bridge can add up to 16 sub-devices.

## 5. Add sub-device



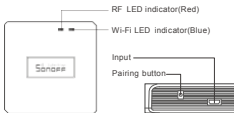
Set the added remote controller to pairing mode: long press for 2s on "My Remote" until you hear a "Beep", then operate the sub-device to pair with the device.

- ⓘ Please refer to the user manual of sub-devices for pairing with sub-devices.

## Specifications

Model	RF Bridge
Input	5V ---1A
RF	433.92MHz
Wi-Fi	IEEE 802.11 b/g/n 2.4GHz
Operating systems	(Android 4.1 & iOS 9.0) or higher
Working temperature	-10°C ~40°C
Material	ABS
Dimension	62x62x20mm

## Product Introduction



## LED indicator status instruction

Blue LED flashes (one long and two short)	Quick Pairing Mode
Blue LED flashes quickly	Compatible Pairing Mode (AP)
Blue LED keeps on	Device is connected successfully
Blue LED flashes quickly once	Unable to discover the router
Blue LED flashes quickly twice	Connect to the router but fail to connect to Wi-Fi
Blue LED flashes quickly three times	Upgrading

## Factory Reset

Long press the pairing button for about 5s until the Wi-Fi LED indicator changes in a cycle of two short and one long flash and release, then the reset is successful. The device enters quick pairing mode (Touch).



ⓘ Please reset the device to factory defaults if you want to change the Wi-Fi network, then reconnect the new network.

## **FCC Warning**

This device complies with part 15 of the FCC rules. Operation is subject to the following two conditions: (1) this device may not cause harmful interference, and (2) this device must accept any interference received, including interference that may cause undesired operation.

Changes or modifications not expressly approved by the party responsible for compliance could void the user's authority to operate the equipment.

**NOTE:** This equipment has been tested and found to comply with the limits for a Class B digital device, pursuant to part 15 of the FCC Rules. These limits are designed to provide reasonable protection against harmful interference in a residential installation. This equipment generates uses and can radiate radio frequency energy and, if not installed and used in accordance with the instructions, may cause harmful interference to radio communications. However, there is no guarantee that interference will not occur in a particular installation. If this equipment does cause harmful interference to radio or television reception, which can be determined by turning the equipment off and on, the user is encouraged to try to correct the interference by one or more of the following measures:

- Reorient or relocate the receiving antenna.
- Increase the separation between the equipment and receiver.
- Connect the equipment into an outlet on a circuit different from that to which the receiver is connected.
- Consult the dealer or an experienced radio/TV technician for help.



## Radiation Exposure Statement

To comply with FCC RF exposure compliance requirements, this grant is applicable to only mobile configurations. The antennas used for this transmitter must be installed to provide a separation distance of at least 20cm from all persons and must not be co-located or operating in conjunction with any other antenna or transmitter.



**Shenzhen Sonoff Technologies Co., Ltd.**

1001, BLDG8, Lianhua Industrial Park, shenzhen, GD, China  
ZIP code: 518000

Website: [sonoff.tech](http://sonoff.tech)

MADE IN CHINA

