

i3ALLSYNC HDMI

User Manual



Table of Contents

- Chapter 1: Product Introduction 3
 - 1-1 Package Contents..... 3
 - 1-2 Hardware Recommendation 3
 - 1-3 Hardware Setup/Installation 4
- Chapter 2: Use i3ALLSYNC HDMI Tx to screen mirroring. 5
 - 2-1 Pairing i3ALLSYNC HDMI Tx and Rx 5
 - 2-2 Pairing OK, Ready to use..... 8
- Chapter 3: Box Configuration 9
- Chapter 4: Troubleshooting and FAQ 11

Chapter 1: Product Introduction

Thank you for purchasing i3ALLSYNC HDMI Tx. This section is going to introduce i3ALLSYNC HDMI Tx more details as below.

1-1 Package Contents

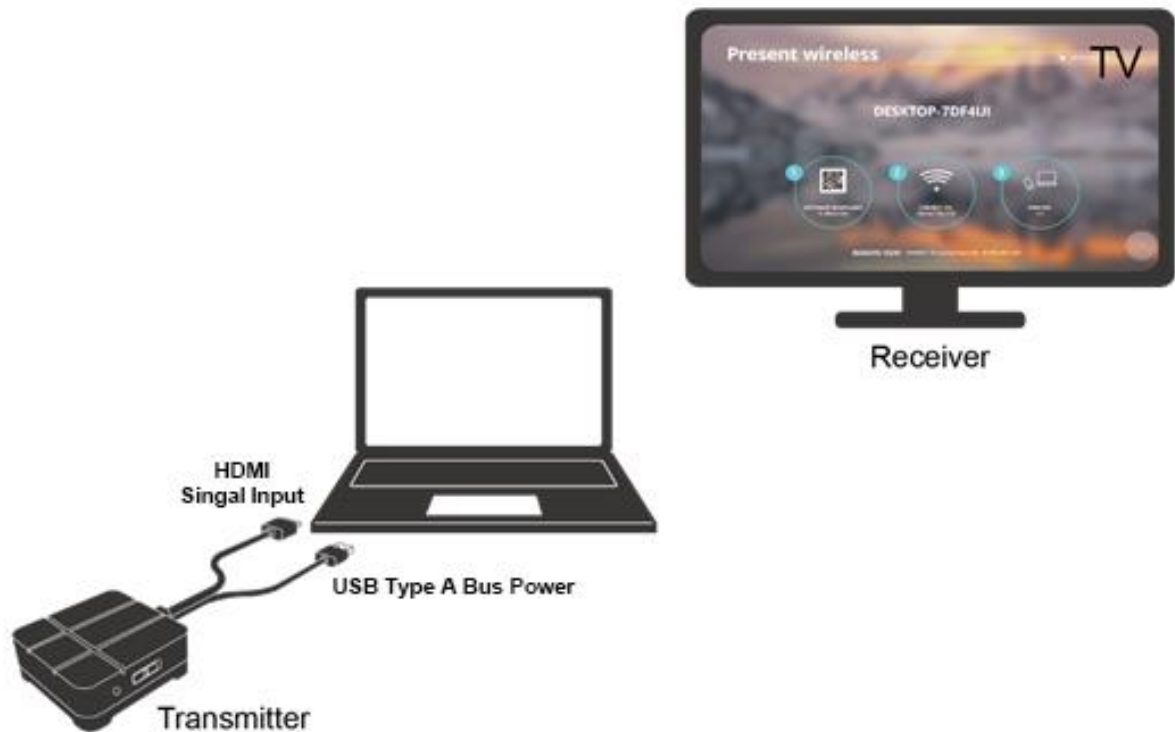
1. i3ALLSYNC HDMI Transmitter (Tx)
2. Manual

1-2 Hardware Recommendation

1. Device with HDMI out to Tx
 - Supports up to HDMI 1080p output
2. Display connect to Rx
 - Display device (TV / Projector and so on) must support HDMI input
 - Maximum Display resolution is up to 1080P.

1-3 Hardware Setup/Installation

1. Connect your device



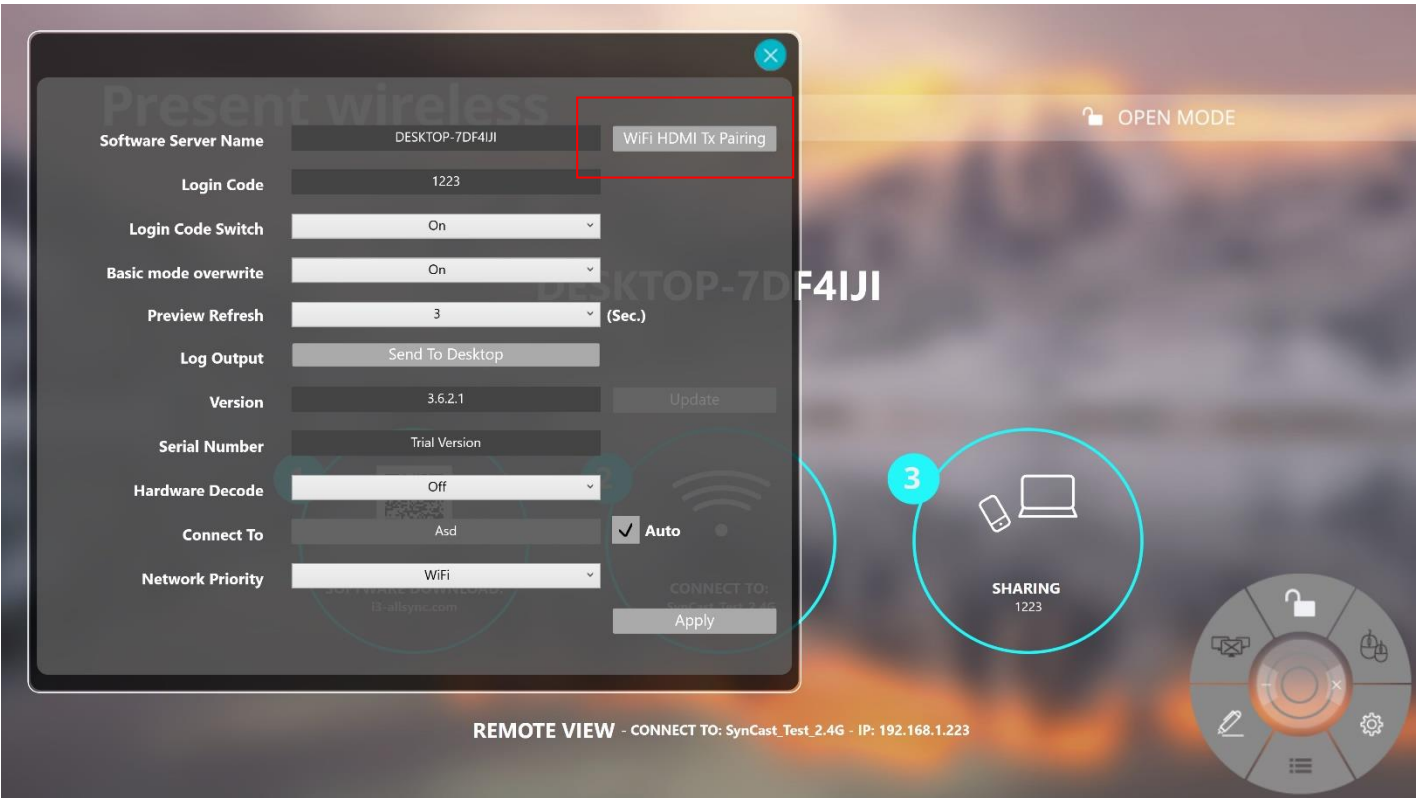
2. Activate i3ALLSYNC Rx.

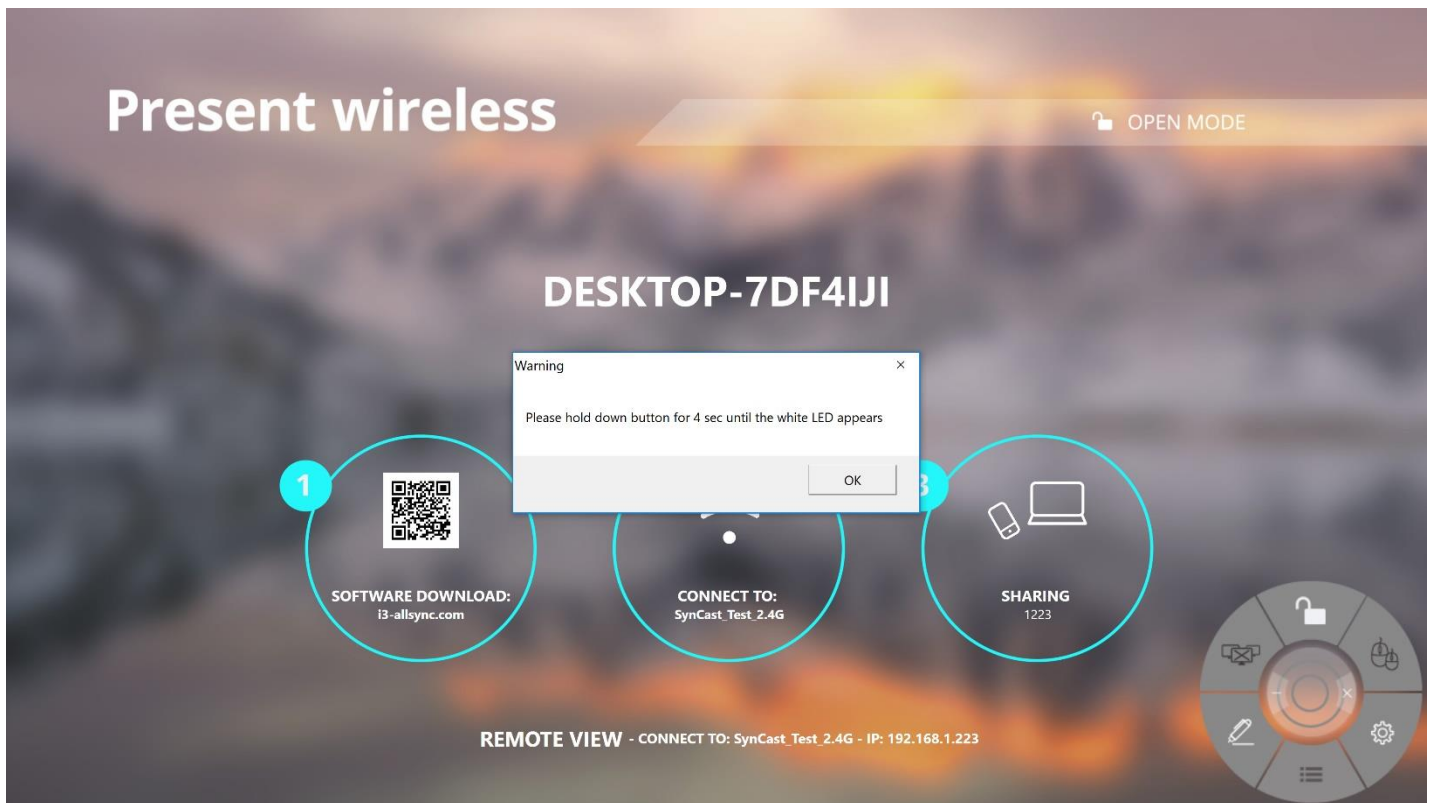


After few seconds, the Rx device is in standby mode and ready to do screen mirroring from your Tx device.

Chapter 2: Use i3ALLSYNC HDMI Tx to screen mirroring.

2-1 Pairing i3ALLSYNC HDMI Tx and Rx

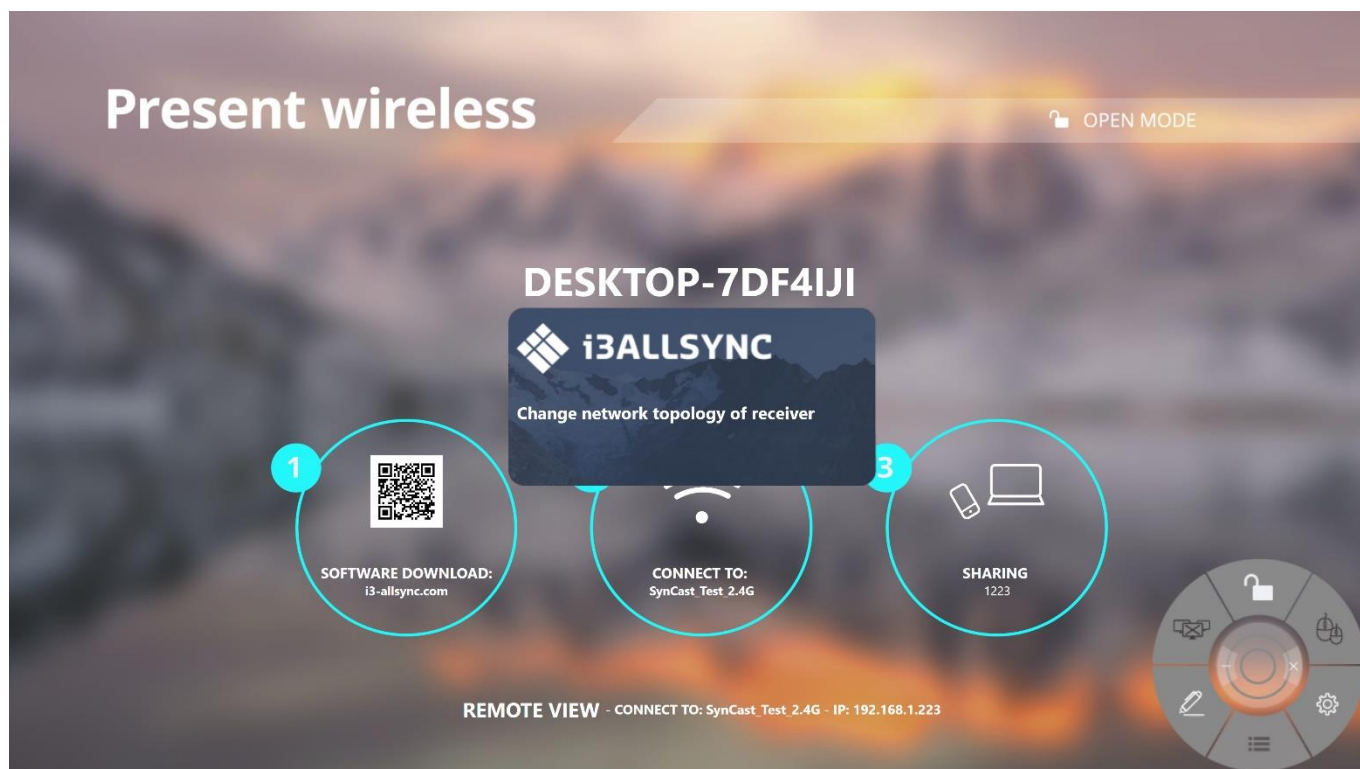
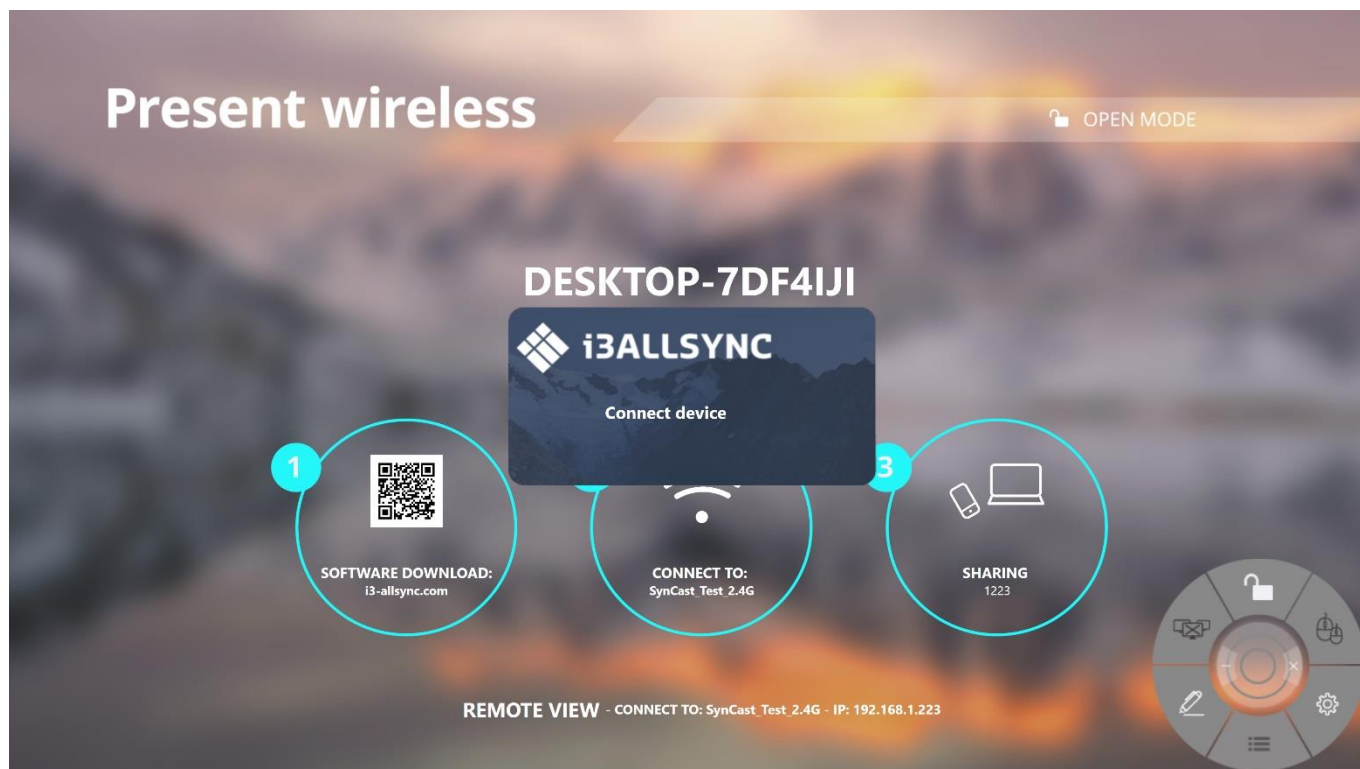




When using the i3ALLSYNC HDMI Tx at the first time, please select “Setting” ➡ “WiFi HDMI Tx pairing” from Rx device, ➡ then hold down the main button of Tx for 4 seconds.

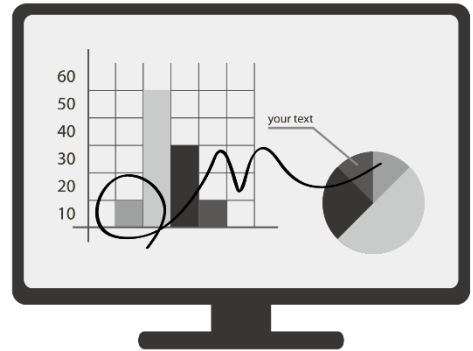
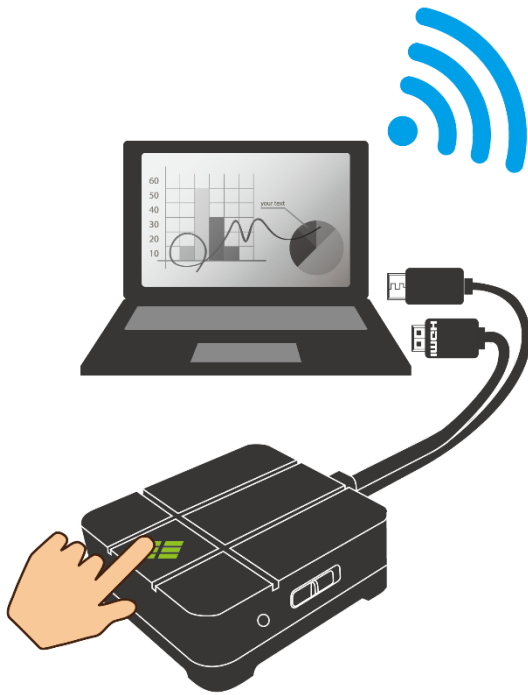


Enter the password of your router ➡ select “paring”, then it’ll start to auto pairing.



After this procedure, the auto paring will complete.

2-2 Pairing OK, Ready to use.



After the pairing connection completed, Tx is ready to screen mirroring.

Chapter 3: Box Configuration

- LED

Status	Color	LED Action
Standby	Red	Lights up constantly
Connection failed	Red	Flash three seconds and stop three seconds
Waiting for pairing	White	Blink
Pairing	Green	Blink
Paired and Ready	Green	Lights up constantly
Mirroring	Blue	Lights up constantly
Error	Red	Blink
Without HDMI source	Yellow	Lights up constantly
FW update	White	Blink

- Button and Switch for Tx



Item	Function Description
Main Button	Pairing / Start mirroring / stop mirroring
F1 Button	Snapshot in Presentation Mode / Video Mode
Mode Switch	Switch Presentation Mode / Video Mode

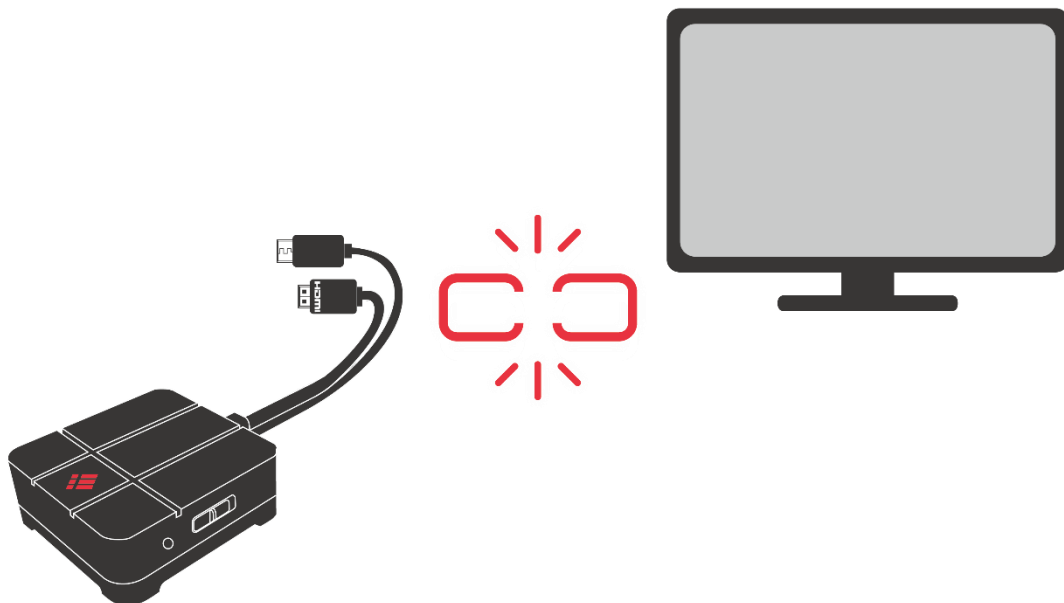
Chapter 4: Troubleshooting and FAQ

- Tx connected power but didn't receive HDMI in data.



Please check the HDMI in is unplugged or not.

- Disconnected

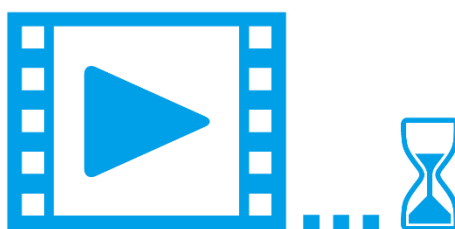


Please check the Tx HDMI connection and power cable connection.

- What's video mode and presentation mode?



Mode indication is shown before mirroring. Presentation mode is designed with lower latency.



Video mode is designed with higher FPS and the video play is smooth.

● What's supported resolution of Tx HDMI in?

Interface	Tx HDMI in resolution
HDMI	480i/p, 576i/p, 720p50Hz/60Hz, 1080i50Hz/60Hz ,1080p50Hz/60Hz

FEDERAL COMMUNICATIONS COMMISSION INTERFERENCE STATEMENT

This equipment has been tested and found to comply with the limits for a Class B digital device, pursuant to part 15 of the FCC Rules. These limits are designed to provide reasonable protection against harmful interference in a residential installation. This equipment generates, uses and can radiate radio frequency energy and, if not installed and used in accordance with the instructions, may cause harmful interference to radio communications. However, there is no guarantee that interference will not occur in a particular installation. If this equipment does cause harmful interference to radio or television reception, which can be determined by turning the equipment off and on, the user is encouraged to try to correct the interference by one or more of the following measures:

- Reorient or relocate the receiving antenna.
- Increase the separation between the equipment and receiver.
- Connect the equipment into an outlet on a circuit different from that to which the receiver is connected.
- Consult the dealer or an experienced radio/ TV technician for help.

CAUTION:

Any changes or modifications not expressly approved by the grantee of this device could void the user's authority to operate the equipment.

This device complies with Part 15 of the FCC Rules. Operation is subject to the following two conditions: (1) this device may not cause harmful interference, and (2) this device must accept any interference received, including interference that may cause undesired operation.

“Federal Communication Commission (FCC) Radiation Exposure Statement

This EUT is compliance with SAR for general population/uncontrolled exposure limits in ANSI/IEEE C95.1-1999 and had been tested in accordance with the measurement methods and procedures specified in OET Bulletin 65 Supplement C. This equipment should be installed and operated with minimum distance 0.5cm between the radiator & your body.”