

## EXHIBIT A - SAR SETUP PHOTOGRAPHS

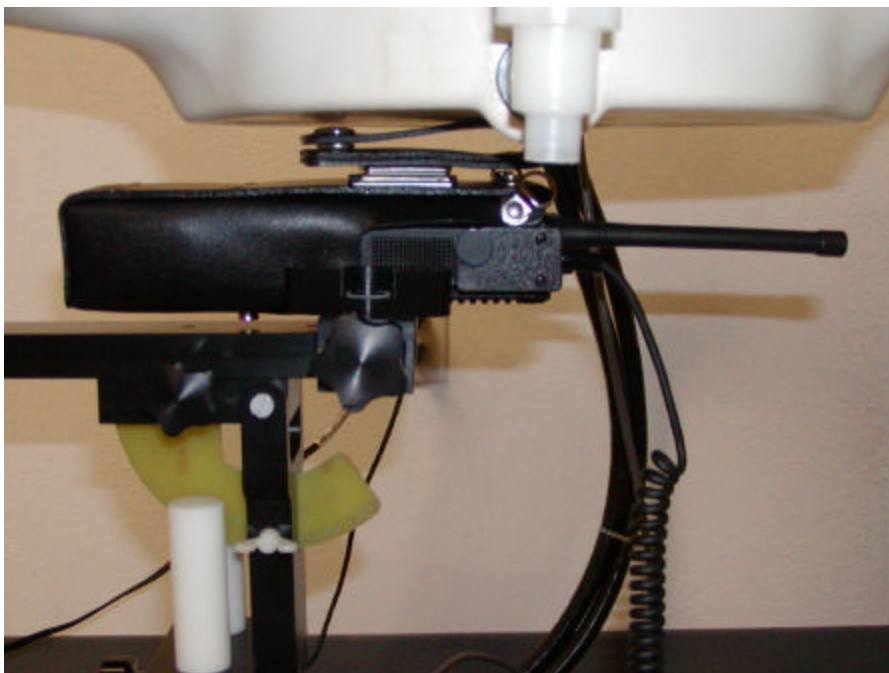
---

**Body-worn with accessories – Leather Case, belt-clip and microphone:**

**Setup Entire View**



**Setup Side View**

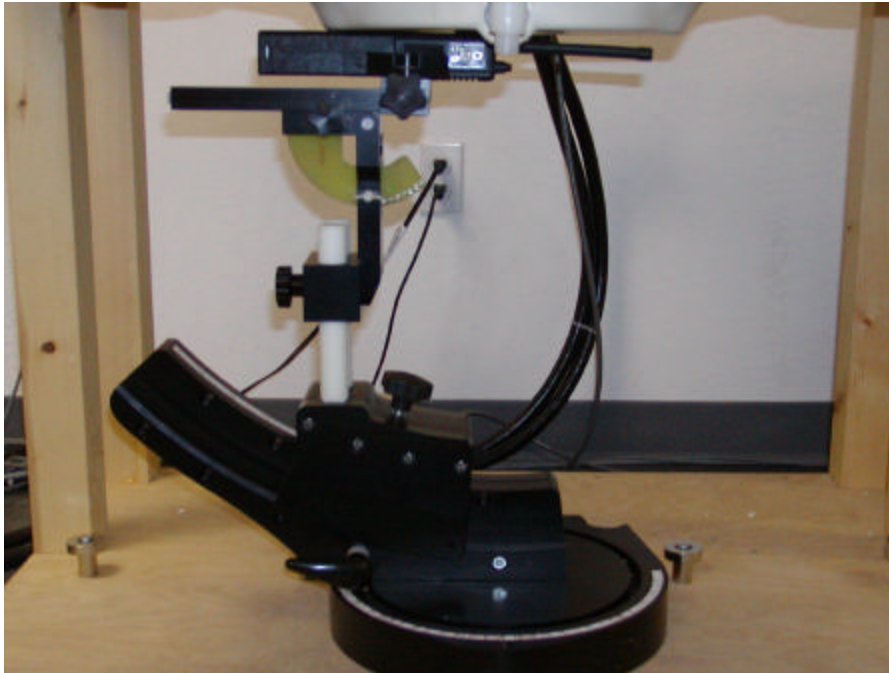


## Setup Top View

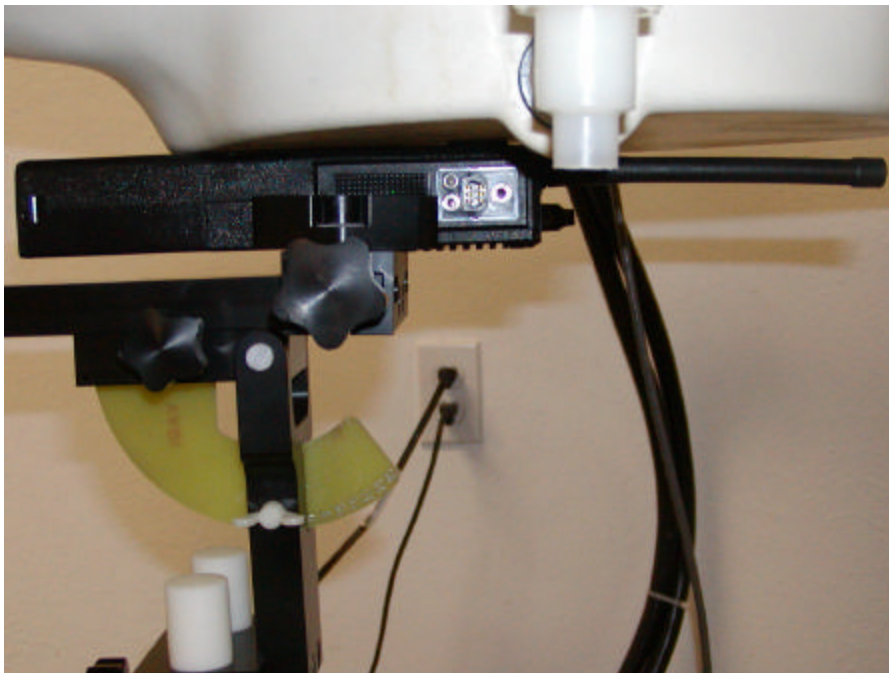


**Body-worn:**

**Setup Entire View**



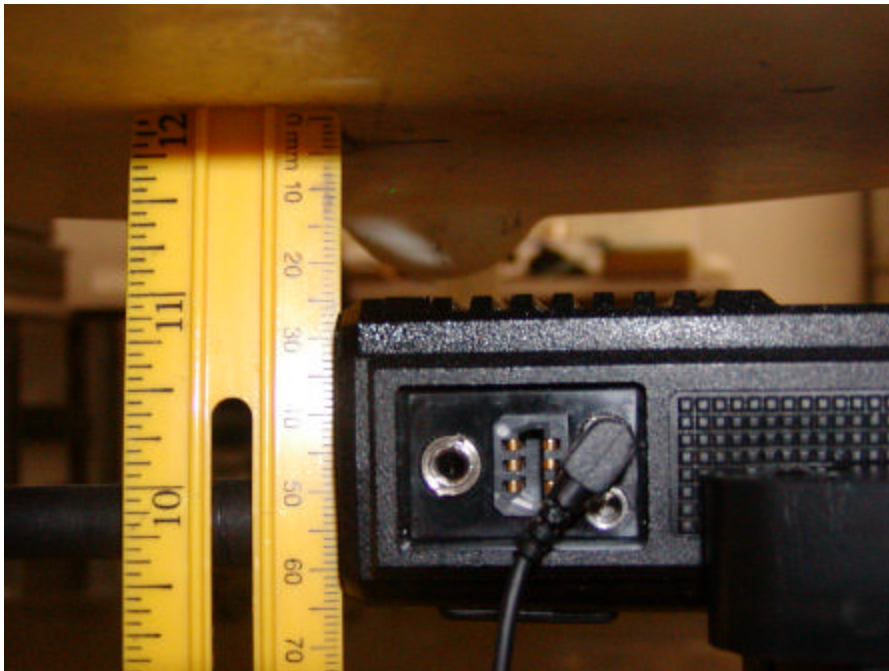
**Setup Side View**



## Setup Top View





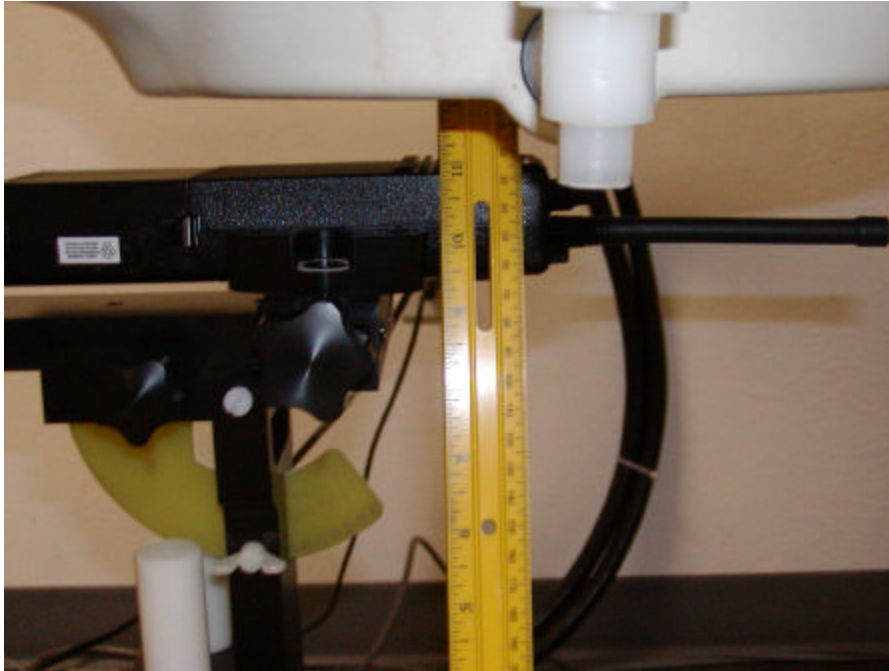
**2.5cm Separation face-held with earphone:****Setup Entire View****Setup Side View**

## Setup Top View

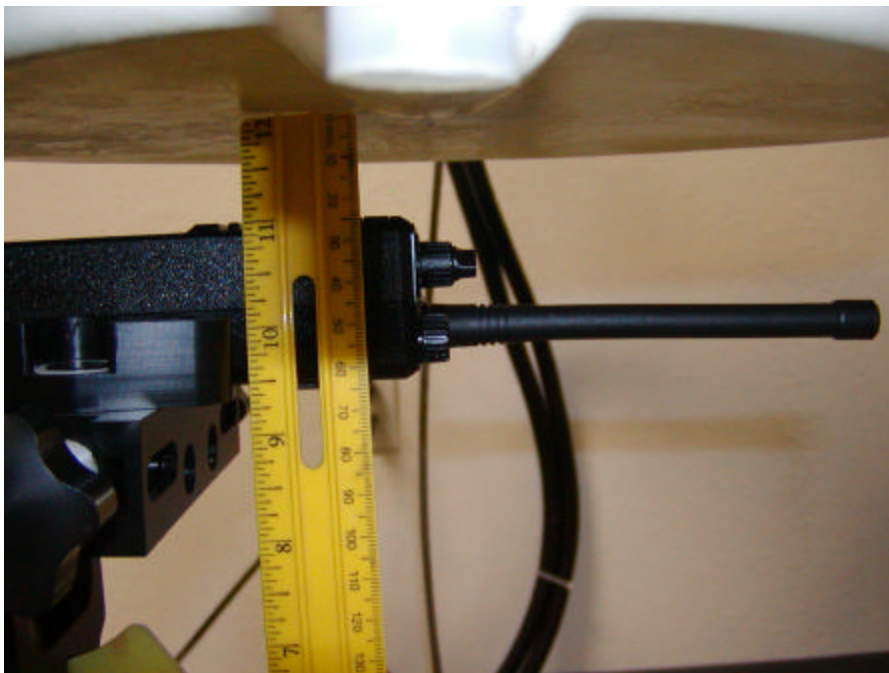


## 2.5cm Separation face-held

### Setup Entire View



### Setup Side View



## Setup Top View





## EXHIBIT B - EUT PHOTOGRAPHS

---

### Chassis - Front View

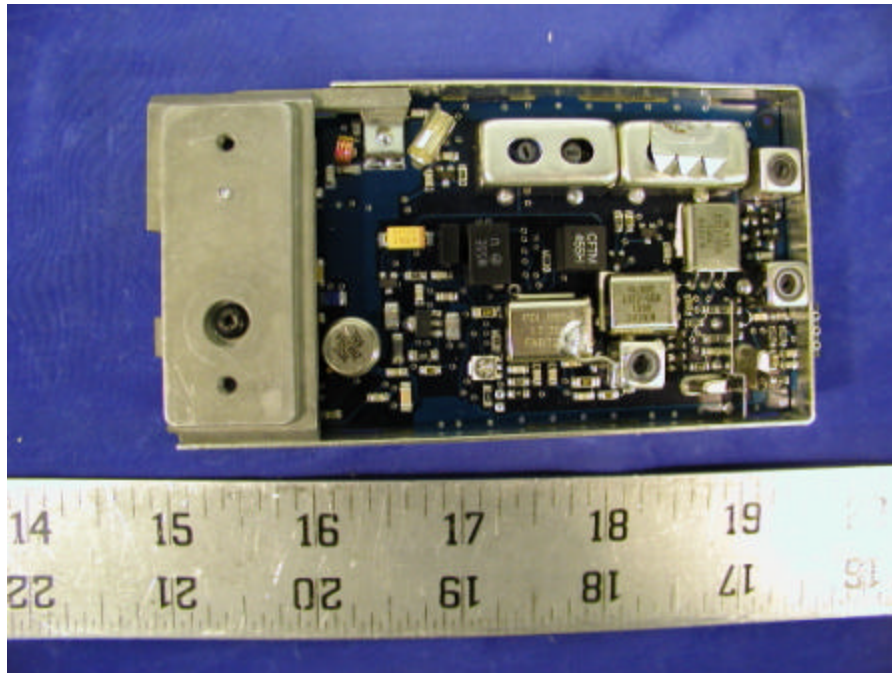
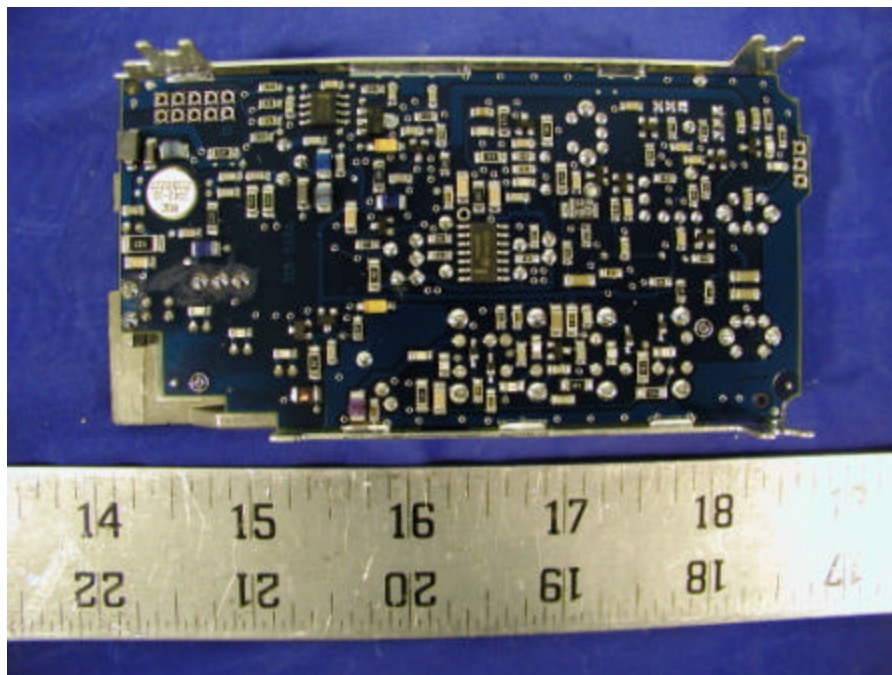


### Chassis - Back View

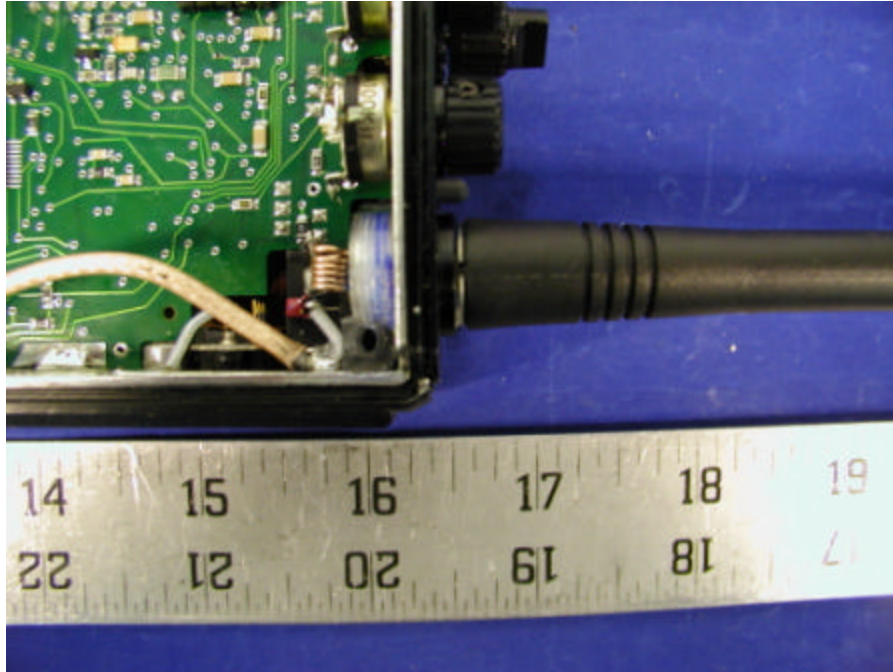


## Chassis - Top View



**Transceiver Board - Component View****Transceiver Board - Solder View**

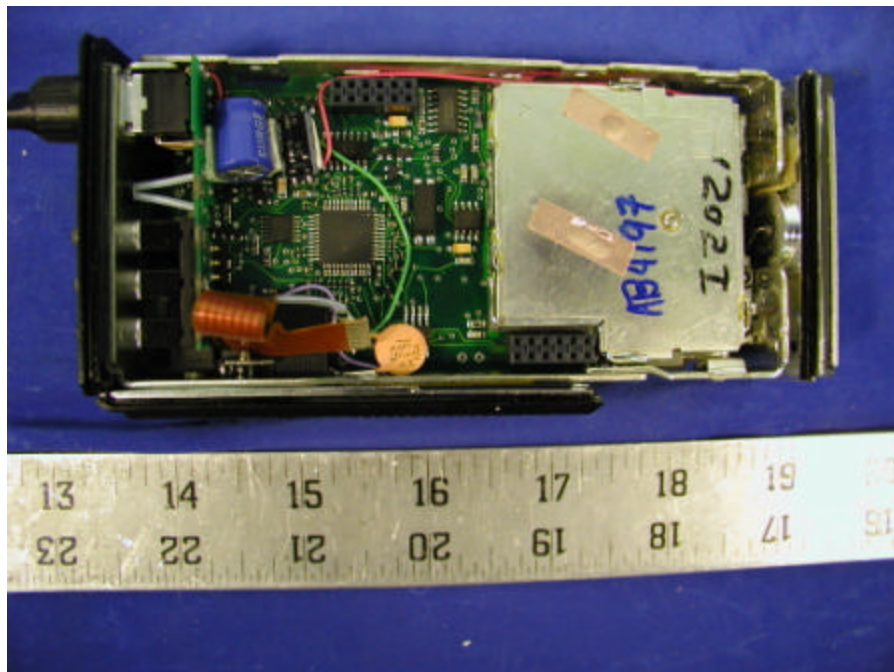
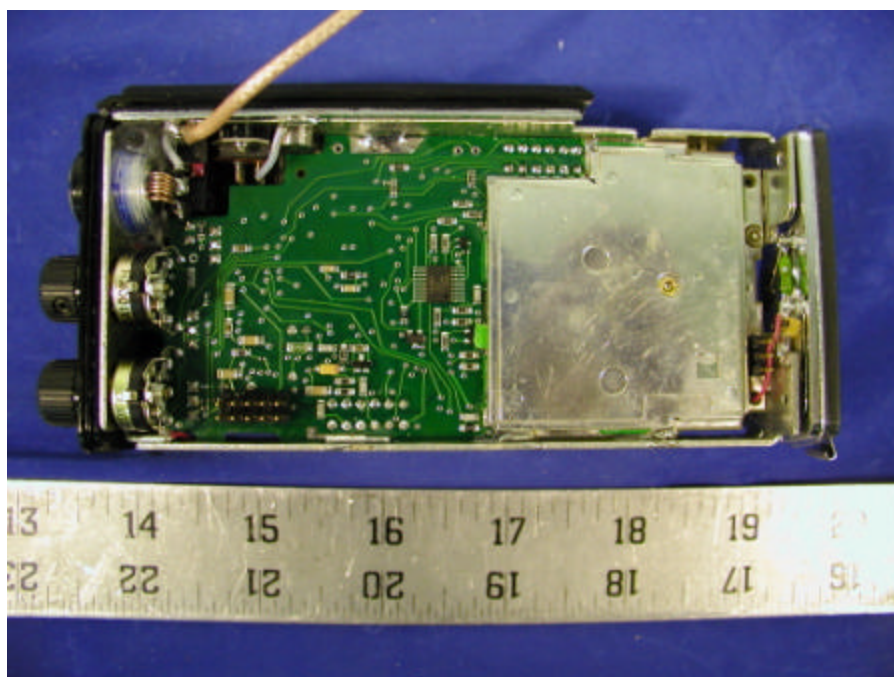
## Antenna Connection



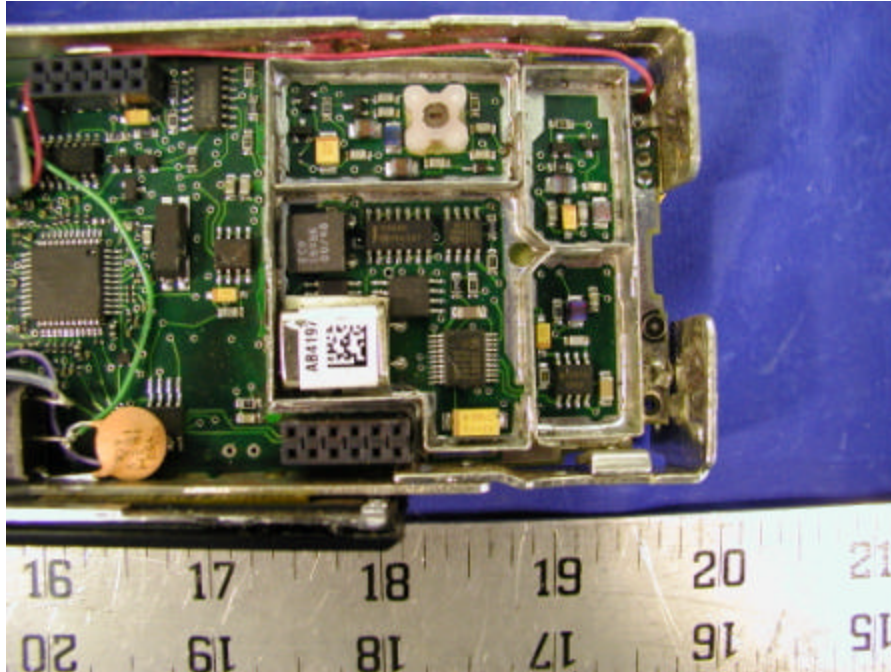
## Antenna



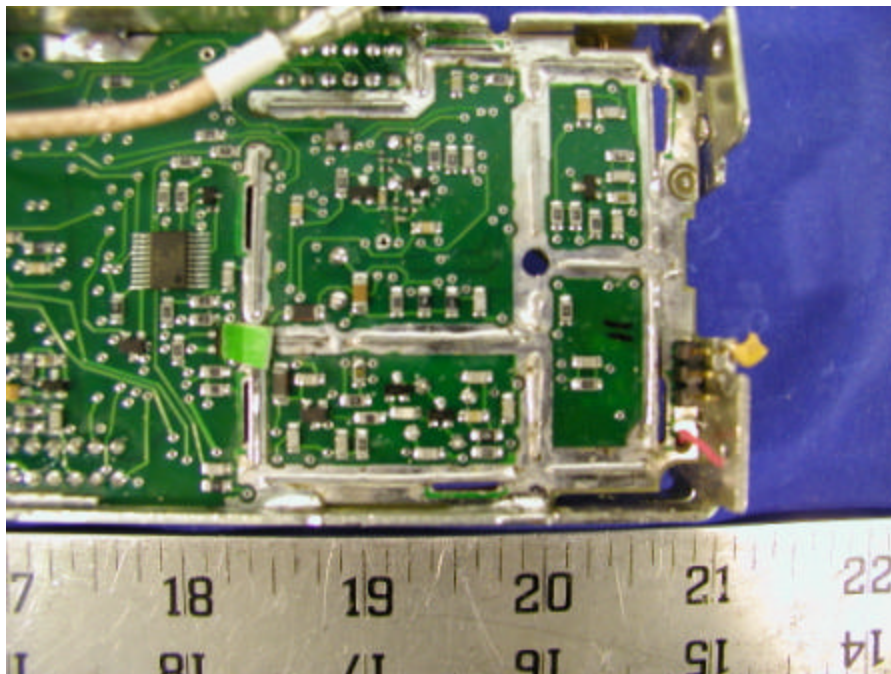


**System Control Board Component View****System Control Board Solder View**

### System Control Board Component View

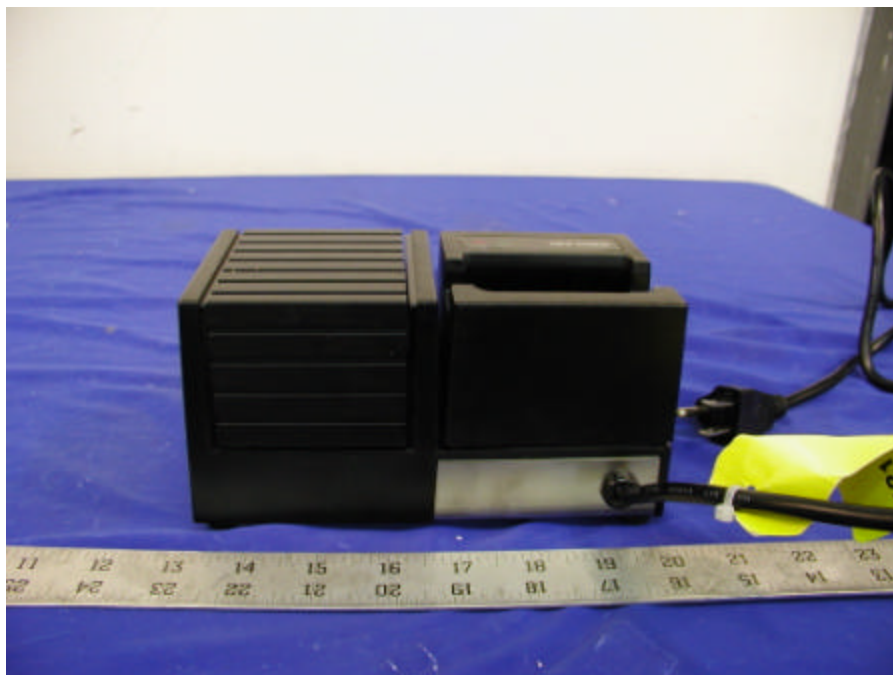


### System Control Board Solder View



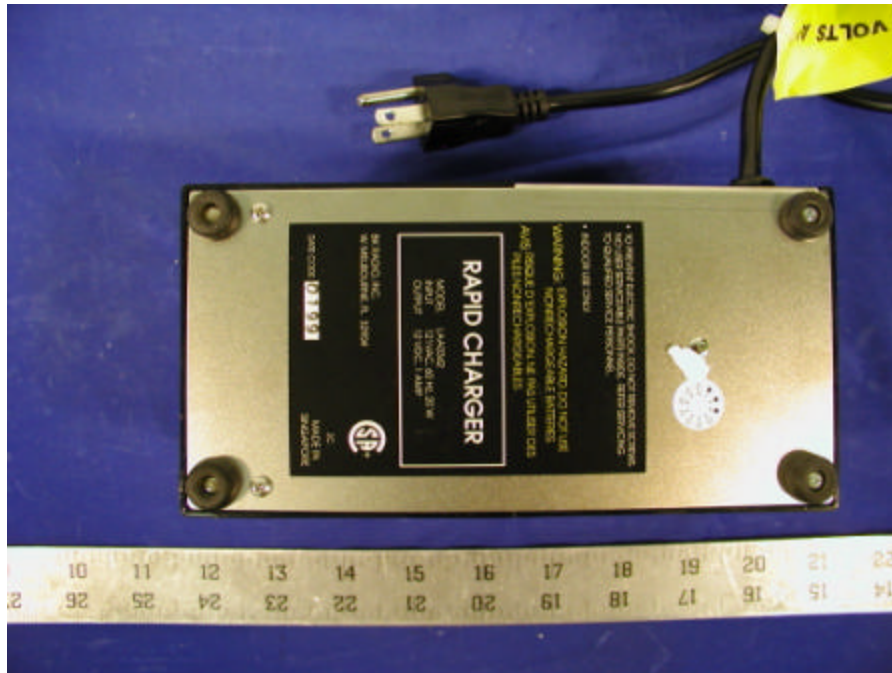


**Battery Front****Battery Bottom**

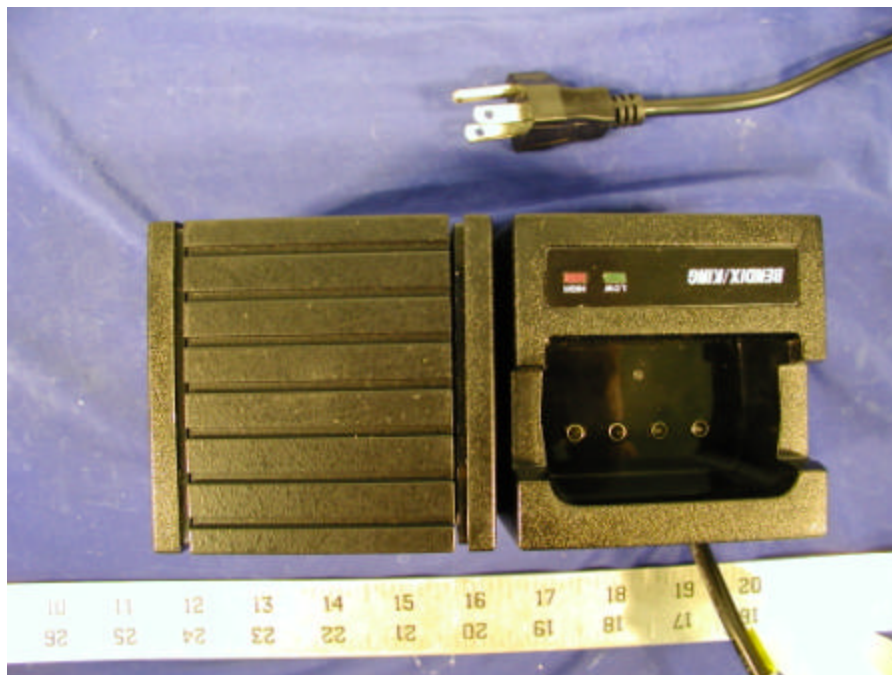
**Battery Top****Charger Front**



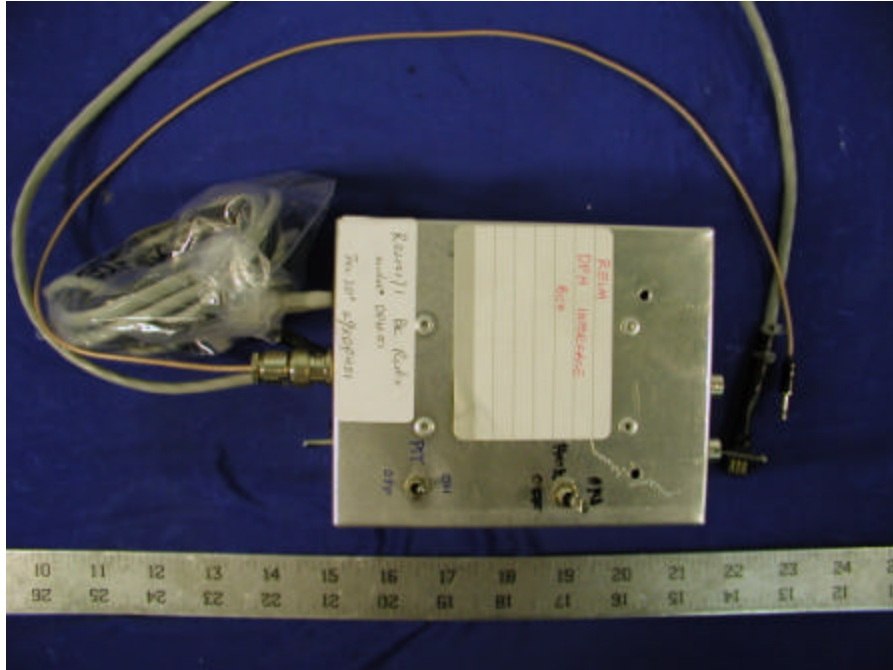
## Charger Bottom



## Charger Top



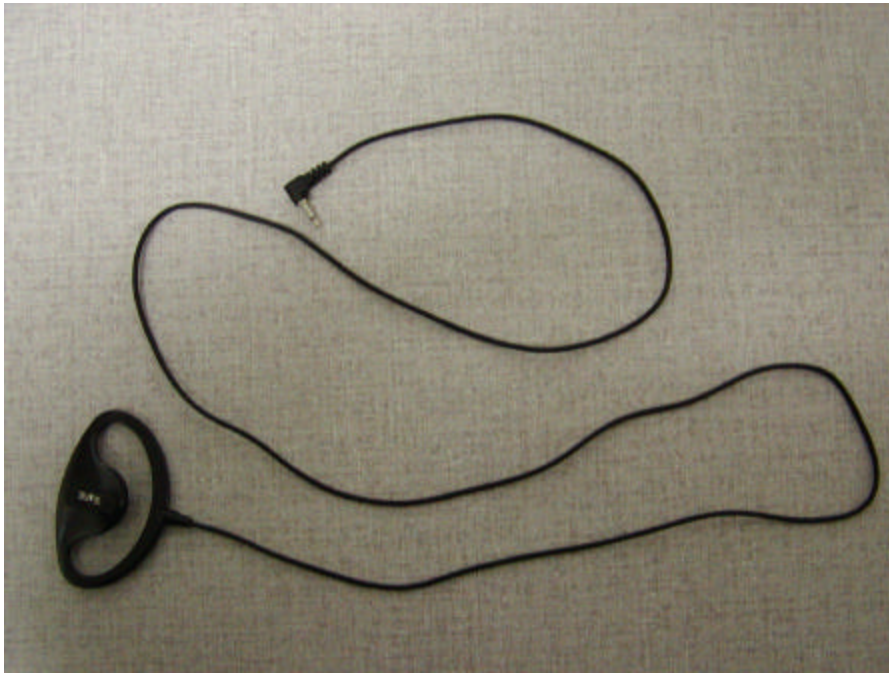
## Radio Interface Box



## Microphone



### **View of Earphone**



### **Back View of Leather Case with Belt Clip**





### **Front View of Leather Case with Belt Clip**

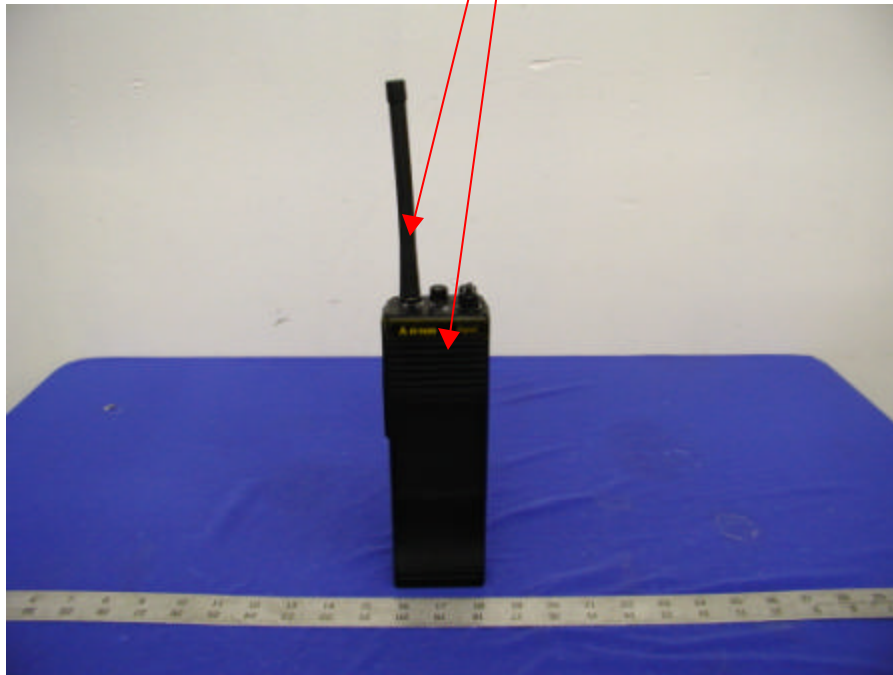


### **Side View of Leather Case with Belt Clip**





### **EUT – Front View / Antenna Hotspot Area**



## EXHIBIT C – Z-Axis

DPH51

SAM Phantom; Section; Position: ; Frequency: 174 MHz

Probe: ET3DV6 - SN1604; ConvF(8.80,8.80,8.80); Crest factor: 1.0; 150:  $\sigma = 0.79 \text{ mho/m}$ ,  $\epsilon_r = 61.1$ ,  $\rho = 1.00 \text{ g/cm}^3$

: , 0

Z-Axis: Dx = 0.0, Dy = 0.0, Dz = 2.0

