

television reception, which can be determined by turning the equipment off and on, the user is encouraged to try to correct the interference by one or more of the following measures:

- Reorient or relocate the receiving antenna.
- Increase the separation between the equipment and receiver.
- Connect the equipment into an outlet on a circuit different from that to which the receiver is connected.
- Consult the dealer or an experienced radio/TV technician for help.

**Caution:** Changes or modifications not expressly approved by HARMAN could void the user's authority to operate the equipment.

#### For Products That Transmit RF Energy:

##### (i) FCC AND IC INFORMATION FOR USERS

This device complies with Part 15 of the FCC rules and Industry Canada license-exempt RSS standard(s). Operation is subject to the following two conditions: (1) This device may not cause harmful interference; and (2) this device must accept any interference received, including interference that may cause undesired operation.

##### (ii) FCC/IC Radiation Exposure Statement

This equipment complies with FCC and ICSED radiation exposure limits set forth for an uncontrolled environment. This equipment should be installed and operated with minimum distance 20cm between the radiator & your body. In case this equipment has to subject to FCC/IC SAR (Specific Absorption Rate) exposure test, this equipment is designed to meet the requirements for exposure to radio waves established by the FCC and ICSED. These requirements set a SAR limit of 1.6 W/kg averaged over one gram of tissue. The highest SAR value reported under this standard during product certification for use when properly worn on the body or on the head, with no separation. To meet RF exposure guidelines and reduce exposure to RF energy during the operation, this equipment should be positioned at least this distance away from the body or the head.

#### For radio equipment operates in 5150-5850MHz

##### FCC and IC Caution:

High power radars are allocated as primary users of the 5.25 to 5.35 GHz and 5.65 to 5.85 GHz bands. These radar stations can cause interference with and/or damage to LE LAN (Licence-Exempt Local Area Network) devices. No configuration controls are provided for this wireless equipment allowing any change in the frequency of operations outside the FCC grant of authorization for US operation according to Part 15.407 of the FCC rules.

##### IC Caution:

User should also be advised that:

- (i) The device for operation in the band 5150 - 5250 MHz is only for indoor use to reduce the potential for harmful interference to co-channel mobile satellite systems; (ii) the maximum antenna gain permitted for devices in the bands 5250 - 5350 MHz and 5470 - 5725 MHz shall comply with the e.i.r.p. limit: and
- (ii) The maximum antenna gain permitted for devices in the band 5725 - 5825 MHz shall comply with the e.i.r.p. limits specified for point-to-point and non point-to-point operation as appropriate.

**Use Restriction** Attention in European Union, operation is limited to indoor use within the band 5150-5350 MHz.

##### Correct disposal of this product (Waste Electrical & Electronic Equipment)

This symbol means the product must not be discarded as household waste, and should be delivered to an appropriate collection facility for recycling. Proper disposal and recycling helps protect natural resources, human health and the environment. For more information on disposal and recycling of this product, contact your local municipality, disposal service, or the shop where you bought this product.



## JBL Celebrity 100

### Automotive Head Unit User Guide

## Before you start

Congratulations on your purchase of the JBL Celebrity 100 in-car head unit! For correct installation and connection, as well as the correct use of functions during operation, we recommend that you read this manual first. Save it, it will be useful to you in the future.

The JBL Celebrity 100 head unit has a standard installation size of 1DIN and contains:

- FM tuner,
- Player for audio files from USB flash drives,
- Player for audio files from SD memory cards,
- Bluetooth module that allows the head unit to work in hands free mode and play music from the connected device through the car audio system (BT Audio mode)
- AUX input for connecting any audio sources with headphone output (players, smartphones, tablets, etc.)

## Installation and connection of the head unit

### Choosing a place to install

- The head unit is intended for use inside the car.
- To mount it, choose a regular place in the panel, provided by the car manufacturer.
- If the dimension of footprint is not in 1-DIN format, select a suitable adapter frame to accommodate a standard 1-DIN footprint.
- If the design of the panel does not provide for a regular place for the installation of the head unit, choose the mounting location where the unit will not interfere with the normal driving function of the driver.
- Avoid installing the unit where it would be subject to high temperature, such as from direct sunlight, or from hot air, from the heater, or where it would be subject to dust, dirt, or excessive vibration.

### Choosing an installation method

- Use only the parts included with the unit to ensure proper installation. The use of unauthorized parts can cause malfunctions.
- Consult with your nearest dealer if installation requires the drilling of holes or other modifications of the vehicle.
- Install the unit where it does not get in the driver's way and cannot injure the passenger if there is a sudden stop. Like an emergency stop.
- To avoid short circuits, disconnect the battery from the vehicle electrical system (if possible). After making connections, connect the positive terminal of the battery first, then the negative one.
- Before final assembly of the unit, make sure all connections are correct and the system is working properly.

## ENGLISH

### IMPORTANT SAFETY INSTRUCTIONS

#### For all products:

1. Read these instructions.
2. Keep these instructions.
3. Heed all warnings.
4. Follow all instructions.
5. Clean only with a dry cloth.
6. Do not block any ventilation openings. Install this apparatus in accordance with the manufacturer's instructions.
7. Do not install this apparatus near any heat sources such as radiators, heat registers, stoves or other apparatus (including amplifiers) that produce heat.
8. Do not defeat the safety purpose of the polarized or grounding-type plug. A polarized plug has two blades with one wider than the other. A grounding-type plug has two blades and a third grounding prong. The wide blade or the third prong is provided for your safety. If the provided plug does not fit into your outlet, consult an electrician for replacement of the obsolete outlet.
9. Protect the power cord from being walked on or pinched, particularly at plugs, convenience receptacles and the point where they exit from the apparatus.
10. Use only attachments/accessories specified by the manufacturer.
11. Use only with the cart, stand, tripod, bracket or table specified by the manufacturer or sold with the apparatus. When a cart is used, use caution when moving the cart/apparatus combination to avoid injury from tip-over.
12. Unplug this apparatus during lightning storms or when unused for long periods of time.
13. Refer all servicing to qualified service personnel. Servicing is required when the apparatus has been damaged in any way, such as when the power-supply cord or plug is damaged, liquid has been spilled or objects have fallen into the apparatus, or the apparatus has been exposed to rain or moisture, does not operate normally or has been dropped.
14. To disconnect this apparatus from the AC mains completely, disconnect the power-supply cord plug from the AC receptacle.
15. The mains plug of the power-supply cord shall remain readily operable.
16. This apparatus is intended to be used only with the power supply and/or charging cable provided by the manufacturer.



The following instructions may not apply to waterproof devices. Refer to your device user manual or quick start guide for more waterproof instruction if any.

- Do not use this apparatus near water.
- Do not expose this apparatus to dripping or splashing, and ensure that no objects filled with liquids, such as vases, are placed on the apparatus.

**WARNING:** TO REDUCE THE RISK OF FIRE OR ELECTRIC SHOCK, DO NOT EXPOSE THIS APPARATUS TO RAIN OR MOISTURE.

## CAUTION

### RISK OF ELECTRIC SHOCK. DO NOT OPEN.



THIS SYMBOL ON THE PRODUCT MEANS THERE IS UNINSULATED, DANGEROUS VOLTAGE WITHIN THE PRODUCT ENCLOSURE THAT MAY PRESENT A RISK OF ELECTRICAL SHOCK.



THIS SYMBOL ON THE PRODUCT MEANS THERE ARE IMPORTANT OPERATING AND MAINTENANCE INSTRUCTIONS IN THIS GUIDE.

### CAUTION FCC AND IC STATEMENT FOR USERS (USA AND CANADA ONLY)

This device complies with part 15 of the FCC Rules. Operation is subject to the following two conditions: (1) This device may not cause harmful interference, and (2) this device must accept any interference received, including interference that may cause undesired operation.

CAN ICES-003(B)/NMB-003(B)

### FCC SDOC SUPPLIER'S DECLARATION OF CONFORMITY

HARMAN International hereby declares that this equipment is in compliance with the FCC Part 15 Subpart B.

The declaration of conformity may be consulted in the support section of our Web site, accessible from [www.jbl.com](http://www.jbl.com)

### Federal Communication Commission Interference Statement

This equipment has been tested and found to comply with the limits for a Class B digital device, pursuant to Part 15 of the FCC Rules. These limits are designed to provide reasonable protection against harmful interference in a residential installation. This equipment generates, uses and can radiate radio frequency energy and, if not installed and used in accordance with the instructions, may cause harmful interference to radio communications. However, there is no guarantee that interference will not occur in a particular installation. If this equipment does cause harmful interference to radio or



## Safety Instruction

### PRODUCT REGISTRATION

[register.jbl.com](http://register.jbl.com)

#### SIGN UP & STAY TUNED

Register your product • Registrare dein produkt • Registro del producto •  
Enregistrez votre produit • Registro de Produto • 製品登録 •  
Registrar dit produkt • Rejisteröl tuotteesi • Registracja produktu •  
Registrea din produkt • Registreer je product

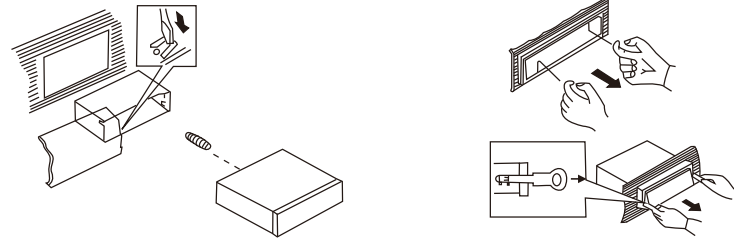
\*Product registration may not be available for all countries



SCAN ME

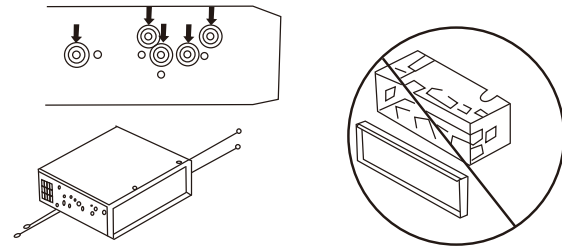
### Installation option with the mounting frame

1. Insert the mounting frame into the car dashboard.
2. Select the appropriate tab according to the thickness of the dashboard material and bend them inwards to secure the frame in the panel.
3. Make all the necessary connections and insert the unit into the mounting frame.
4. Attach the decorative frame to the front of the unit.
5. If there is need to remove the head unit, use the remove tools included in the kit.



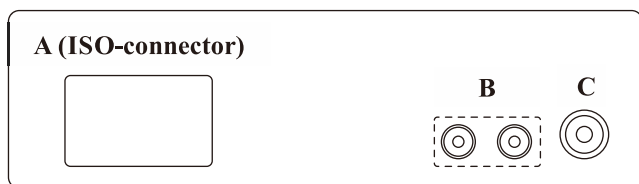
### Installation option without the mounting frame, but using the factory head unit bracket in the car dashboard

1. Select a position where the screw holes of the bracket and the screw holes of the main unit become aligned (are fitted).
2. Attach the head unit to the brackets on both sides of the unit in at least two places. To do this, use the fixing screws supplied with the head unit. Do not use screws with longer lengths or other thread sizes, as this may damage the device.



## Connecting to the head unit

Location of the connectors on the back of the head unit:



Connector	Wire / connector color	Function
A	Yellow	POWER +12VDC
	Blue	Remote control output
	Red	ACC +12VDC
	Black	GROUND
	Grey	Right front speaker output (+)
	Grey/black	Right front speaker output (-)
	White	Left front speaker output (+)
	White/black	Left front speaker output (-)
	Purple	Right rear speaker output (+)
	Purple/black	Right rear speaker output (-)
	Green	Left rear speaker output (+)
	Green/black	Left rear speaker output (-)
B	Red	REAR Rch LINE OUT
	White	REAR Lch LINE OUT
C		Antenna

### Note 1:

The red wire of the unit can only be connected to the ignition circuit (ACC). Connecting it together with the yellow wire to a permanent B+ can lead to a discharge of the car's battery during prolonged parking.

### Note 2:

In some vehicles, the location of the red and yellow wires in the ISO connector may be reversed. If the settings are reset every time when the car ignition is turned off, swap the red and yellow wires in the connector.

- Be careful when connecting the head unit. Incorrect connection can lead to its breakdown and void the right to warranty service.

## Specifications

### General:

- Power supply:** 12 V DC on-board network
- Type of on-board network:** with a negative terminal on the body ("mass")
- Supply voltage range:** 11.0 - 14.4 V
- Recommended speaker impedance:** 4 ohms
- Rated Output Power:** 4 x 50 W peak
- Installation dimensions (W x H x D):** 178 x 50 x 87 mm
- Fuse rating:** 10 A

### Tone Controls:

- Bass (at 100 Hz):** -10 dB / +10 dB
- Treble (at 10K):** -10 dB / +10 dB

### USB/SD:

- Signal to noise ratio:** no less than 70 dB
- Channel separation:** no less than 70 dB
- Frequency response:** 20 Hz - 20 kHz

### FM Radio:

- Frequency coverage:** 87.5 - 107.9 MHz
- Sensitivity (S/N -30 dB):** 12 dBu
- Channel Separation:** >30 dB

### Bluetooth:

- Operating range: up to 10 m
- Supported profiles: HFP, HSP, A2DP, AVRCP



The Bluetooth® word mark and logos are registered trademarks owned by Bluetooth SIG, Inc. and any use of such marks by HARMAN International Industries, Incorporated is under license. Other trademarks and trade names are those of their respective owners.