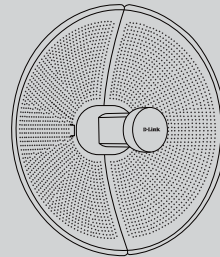




## Quick Installation Guide

20 km Long Range 802.11ac Wireless Bridge

DAP-3712



Additional documentation is also available on the D-Link website

---

## Contents

---

English	1
---------	---

## Before You Begin

This installation guide provides basic instructions for installing the DAP-3712 on your network. The device should be ensured that systems employing high gain directional antennas are used exclusively for fixed, point-to-point operations. For additional information about how to use the access point, please see the User Manual from the D-Link support website.

## Package Contents

This DAP-3712 should include the following items:

- 20 km Long Range 802.11ac Wireless Bridge
- PoE injector
- Power cord
- Mounting tie
- Quick Start Guide

If any of the above items are damaged or missing, please contact your local D-Link reseller.

**Note:** Using a power supply with a different voltage than the one recommended for the device will cause damage and void the warranty for this product.

## System Requirements

- Microsoft Windows®, or a Linux-based operating system
- Ethernet port
- Microsoft Edge, Firefox 60.0, or Chrome 68.0.3440.106

## Hardware Overview

### LED Indicators

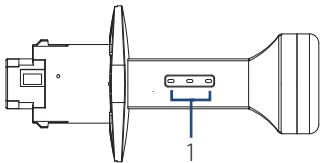


Figure 1: DAP-3712 LEDs

#	LED	Description
1	Signal Strength	Signal strength indicators. One light indicates a weak signal. Two lights indicate a medium signal. Three lights indicate a strong signal.

Table 1: LED Descriptions

### Interface Connectors

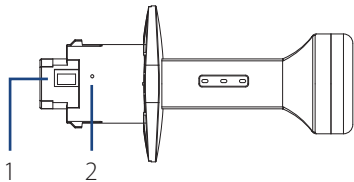


Figure 2: DAP-3712 Interface

#	Feature	Description
1	PoE Port	Uses a standard Ethernet cable to connect the device to a PoE power source such as a PoE switch or PoE injector.
2	Reset Button	Resets the device to its factory settings.

Table 2: Interface Descriptions

## Hardware Installation

### Assembling the Access Point

1. Assemble the dish of the DAP-3712 by sliding the two halves together until they lock in place.

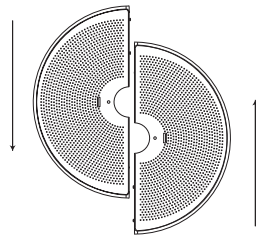


Figure 3: Assembling the Dish

2. Connect the antenna and base through the hole in the center of the dish.

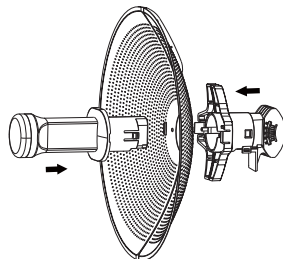


Figure 4: Attaching the Antenna

3. Thread a standard RJ-45 Ethernet cable through the cover for the PoE port on the underside of the DAP-3712. Insert the cable into the PoE port, then attach the cover to the device.

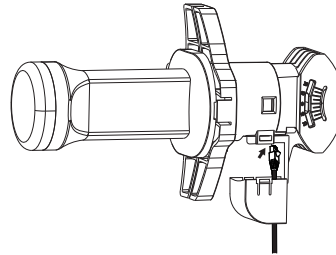


Figure 5: Connecting the Ethernet Cable

4. Connect the adjustment kit to the base of the DAP-3712 by pressing it in until it clicks and locks in place. Use the adjustment kit to position the antenna at the desired angle

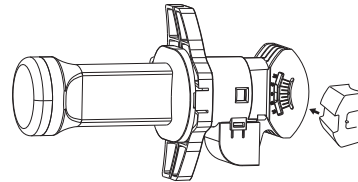


Figure 6: Attaching the Adjustment Kit

### Powering the Access Point

To power the DAP-3712, use a standard Ethernet cable to connect the PoE port on the DAP-3712 to a PoE power source device such as a PoE switch or the included PoE injector.

## Cable Requirements

Use a CAT 5 cable with an even sheath. The Ethernet port on the DAP-3712 access point cannot accept a CAT 5 cable that has an uneven sheath; the RJ-45 connector on the cable will not fit properly into the receptacle on the access point.

## Configuring the Access Point

To set up and manage the DAP-3712, use one of the following methods.

### Connecting Through a Computer

1. Use an Ethernet cable to connect the DAP-3712 to the management computer.
2. Ensure the computer is in the same subnet as the device. The default subnet is **192.168.0.2/255**.
3. Launch a web browser. Enter **192.168.0.50** in the address field of your browser.
4. Log in to the administration user interface. The default login information is:

Username: **admin**  
Password: **admin**

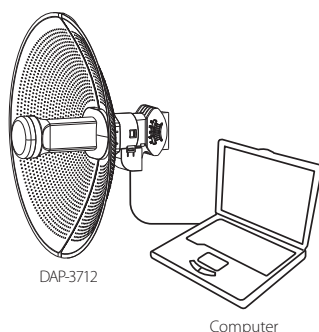


Figure 7: Direct Connection

### Connecting Through a Switch or Router:

1. Use an Ethernet cable to connect the DAP-3712 to the switch or router the management computer is connected to.
2. If the access point did not acquire an IP address from a DHCP server on the network, enter the default IP address of the access point (**192.168.0.50**) in the address field of your browser. If the access point is automatically assigned an IP address by a DHCP server on your network, enter the IP address assigned to the access point into the web browser.
3. Log in to the administration user interface. The default login information is:

Username: **admin**  
Password: **admin**

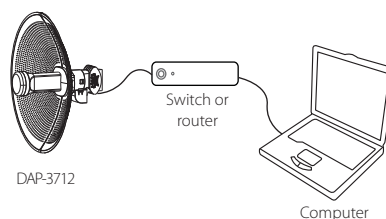


Figure 8: Indirect Connection

## Mounting the Device

### Installation Recommendations

If you plan to install the DAP-3712 on a pole, orient the front of the device (the dish and antenna) toward the intended coverage area. The antenna only transmits data in the direction it is pointed.

Be sure to install the device at a height that ensures that the alignment between the devices is visible and there are no obstructions in the middle.

**Note:** The DAP-3712 is designed to receive PoE power only from an 802.3at compliant source. Connecting the DAP-3712 to a PoE device that is not approved by D-Link can damage the equipment.

### Mounting on a Pole

1. Hold the DAP-3712 against the pole in the desired position.

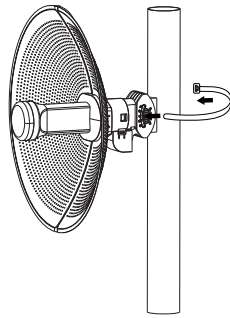


Figure 9: Mounting the Device

2. Thread the metal mounting tie through the hole on the base of the DAP-3712 and wrap it around the pole. Fasten the tie to secure the device against the pole.

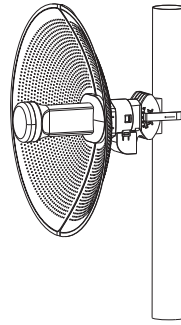


Figure 10: Completed Installation

### RF Frequency Requirements

This device is for outdoor use. High power radars are allocated as primary users of the 5150 ~ 5250 MHz, 5725 ~ 5825 MHz bands. These radar stations can cause interference with and/or damage the PoE injector included with this device.

## Appendix - Statements

### **FCC Statement**

This equipment has been tested and found to comply with the limits for a Class A digital device, pursuant to Part 15 of the FCC Rules. These limits are designed to provide reasonable protection against harmful interference when the equipment is operated in a commercial environment. This equipment generates, uses, and can radiate radio frequency energy and, if not installed and used in accordance with the instruction manual, may cause harmful interference to radio communications. Operation of this equipment in a residential area is likely to cause harmful interference in which case the user will be required to correct the interference at his own expense.

### **FCC Radiation Exposure Statement**

This device complies with FCC radiation exposure limits set forth for an uncontrolled environment and it also complies with Part 15 of the FCC RF Rules. This equipment must be installed and operated in accordance with provided instructions and the antenna(s) used for this transmitter must be installed to provide a separation distance of at least 20 cm from all persons and must not be co-located or operating in conjunction with any other antenna or transmitter. End-users and installers must be provided with antenna installation instructions and consider removing the no-collocation statement.

This device complies with Part 15 of the FCC Rules. Operation is subject to the following two conditions: (1) this device may not cause harmful interference, and (2) this device must accept any interference received, including interference that may cause undesired operation.

### **Caution!**

Any changes or modifications not expressly approved by the party responsible for compliance could void the user's authority to operate the equipment.



Ver. 1.00(WW)\_130x183  
2020/07/24