

Waterproof Bluetooth® Speaker



INTRODUCTION

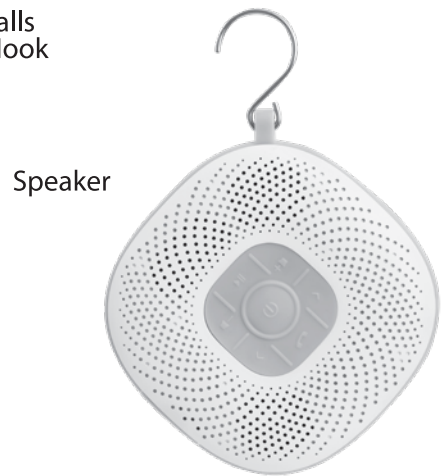
Congratulations on your purchase of the Waterproof Bluetooth® Speaker. Please read all instructions and warnings in this sheet prior to using your speaker. Keep this instruction sheet as it contains important information for future reference.

SAFETY WARNINGS

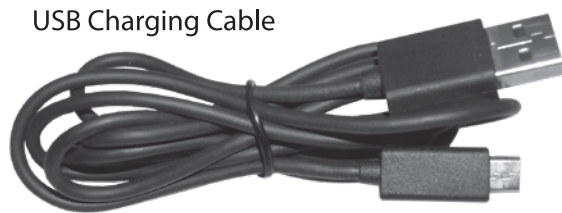
- Inspect the product before every use. If the product appears worn, frayed, cracked, or broken in any manner, discontinue use and discard immediately.
- Do not disassemble.
- Do not use for anything other than its intended purpose.
- This is not a children's product. Keep out of reach of children.
- Do not charge speaker in shower.
- Do not allow moisture to enter USB port.
- Remove hook when hook is not in use

FEATURES

- Waterproof
- Built in rechargeable battery
- Compatible with BLUETOOTH® devices
- Plays music
- Takes voice calls
- Removable Hook



Speaker



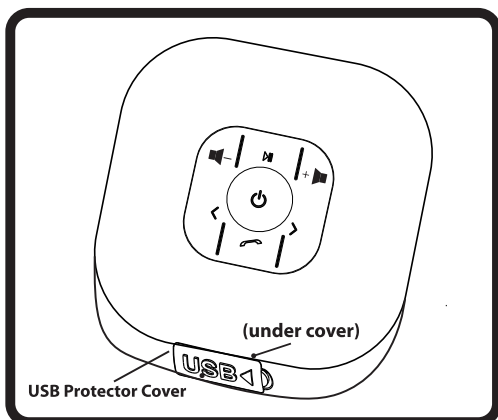
USB Charging Cable

CHARGE THE SPEAKER

- Open USB Protector Cover.
- Attach the small connector of the USB Charging Cable to the Charging Jack (H).
- Attach the other end of the cable to a computer's USB port.
- A red LED light (F) will turn on, indicating speakers are charging.
- Remove the USB cable from computer when the red LED light turns off.
- Close the water resistant USB Protector Cover.
- When the battery is low, an alert tone can be heard reminding you to recharge the speaker.
- Charge speaker only when it is dry.
- Charge the speaker at least 3 hours before 1st time use.

CARE INSTRUCTIONS

- Do not leave unattended for extended time while in the pool.
- Do not leave in direct sunlight for extended time.
- Clean with water and cloth by gently wiping away dirt.



RECHARGEABLE BATTERY WARNING:

- This product contains batteries that are non-replaceable.
- There is a risk of fire and personal injury if battery is punctured, damaged, or misused.
- Do not charge when wet.
- Do not dismantle, crush, incinerate or short-circuit battery.
- Never expose battery to extreme temperatures or moisture.
- Keep away from flammable materials and direct sunlight.
- Only charge using the provided charger, cable, and/or adapters.
- Rechargeable battery is only to be charged by an adult.
- Adult supervision of the battery while it is charging is required.
- Allow battery to cool to room temperature before charging.
- Charge on non-flammable surface and keep away from flammable products.
- Discontinue charging if battery becomes hot, swells, smokes, or gives off a strong odor.
- Battery chargers used with the product are to be regularly examined for damage to the cord, plug, enclosure, and other parts, and in the event of such damage, they must not be used until the damage has been repaired.
- Recycle or dispose of battery according to federal, state and local law.s

KEEP THIS PACKAGING FOR REFERENCE AS IT CONTAINS IMPORTANT INFORMATION.



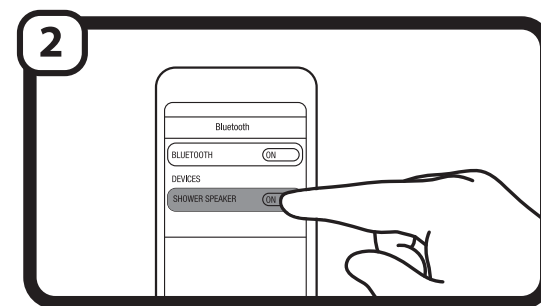
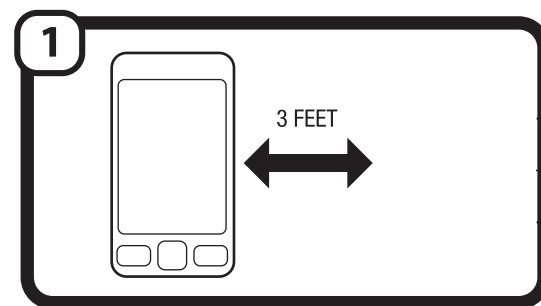
PAIRING THE BLUETOOTH® SPEAKER

Your device must have BLUETOOTH® capability. Consult your device manufacturer or user manual if you are unsure if your device has this feature.

Turn off any devices that may have been previously paired to the speakers.

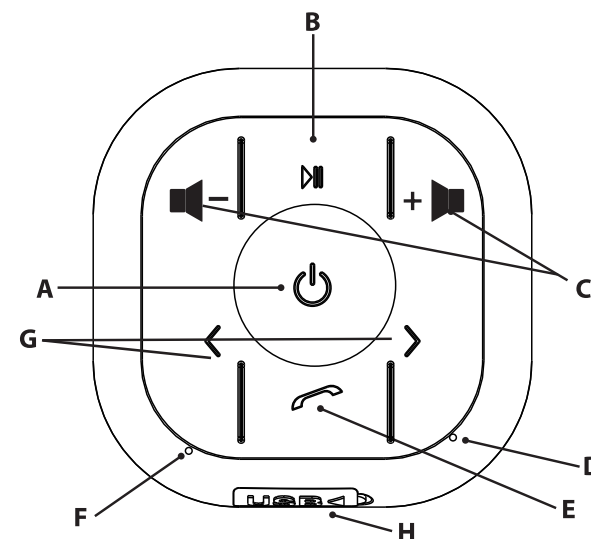
- Press and hold (A) to turn the speaker ON. You will hear a voice say, "Waiting for Device."
- Place your device within 3 feet of the speaker (Figure 1).
- Enable BLUETOOTH® on your device and search for new BLUETOOTH® devices. Refer to your device's manual on how to enable and operate BLUETOOTH®.
- Select FLOATING SPEAKER from the list of BLUETOOTH® available devices (Figure 2).
- A voice from the speakers will notify you when the speaker is successfully paired.
- You can now stream music or take phone calls wirelessly from your device to your speaker.
- If the speaker is not paired to a BLUETOOTH® device, it will turn off automatically after 15 minutes.

Note: If you restart the Speaker, it will automatically pair with your device. A voice will notify you when it is successfully paired.



CONTROLS

- A. Press and hold to turn on Floating Speaker/Press and hold to turn off Floating Speaker.
- B. Play and pause audio.
- C. While playing music - Press and hold to increase volume. During a Call - Press and hold to increase volume.
- D. Turns blue when Bluetooth is active.
- E. Answering a call - Press once to answer / Press twice to reject. During a call - Press once to end the call. Redialing - Press twice.
- F. Red light turns on while charging.
- G. Press once to skip to next or previous song.
- H. Charging jack



This device complies with Part 15 of the FCC Rules. Operation is subject to the following two conditions:
(1) This device may not cause harmful interference, and (2) this device must accept any interference received, including interference that may cause undesired operation.

Warning: Changes or modifications to this unit not expressly approved by the party responsible for compliance could void the user's authority to operate the equipment.

NOTE: This equipment has been tested and found to comply with the limits for a Class B digital device, pursuant to Part 15 of the FCC Rules. These limits are designed to provide reasonable protection against harmful interference in a residential installation. This equipment generates, uses and can radiate radio frequency energy and, if not installed and used in accordance with the instructions, may cause harmful interference to radio communications. However, there is no guarantee that interference will not occur in a particular installation. If this equipment does cause harmful interference to radio or television reception, which can be determined by turning the equipment off and on, the user is encouraged to try to correct the interference by one or more of the following measures:

- Reorient or relocate the receiving antenna.
- Increase the separation between the equipment and receiver.
- Connect the equipment into an outlet on a circuit different from that to which the receiver is connected.
- Consult the dealer or an experienced radio/TV technician for help.

The Bluetooth® word mark and logos are registered trademarks owned by Bluetooth SIG, Inc. Computers, tablets, Smart Phones, and music players must have built-in BLUETOOTH® wireless technology to connect. This product is not affiliated with or endorsed by any of the above mentioned, referenced or pictured trademarks, companies or devices.

©2017 MerchSource, LLC. All rights reserved.
Distributed by MerchSource, LLC., Irvine, CA 92618.

For technical support, please visit www.merchsource.com or call 1-800-374-2744.

The artwork and design of this instruction manual are protected by US copyright law and may not be reproduced, distributed, displayed, published or used for any purpose without prior written permission. It is not permitted to alter, remove or reproduce any trademarks or copyright notice from this manual.