

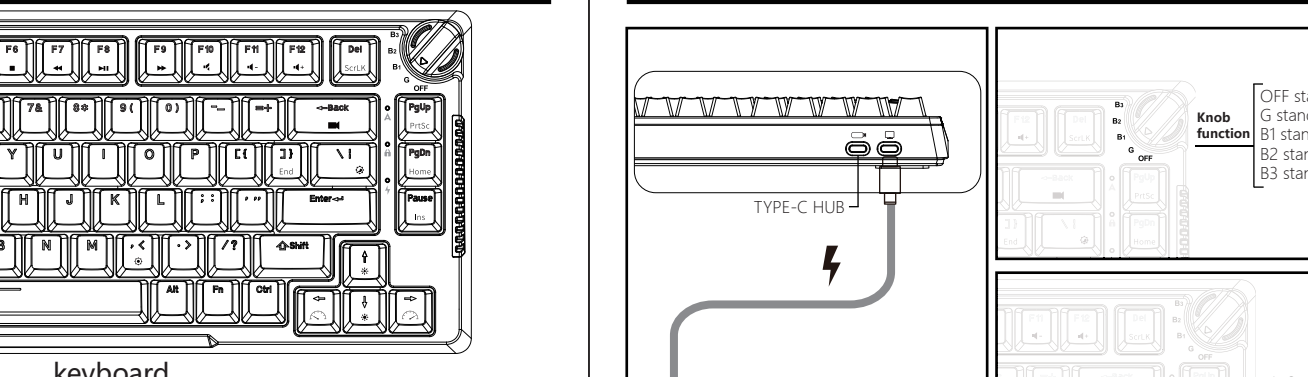
RK ROYAL KLUDGE

USER MANUAL

Mechanical Wireless Keyboard

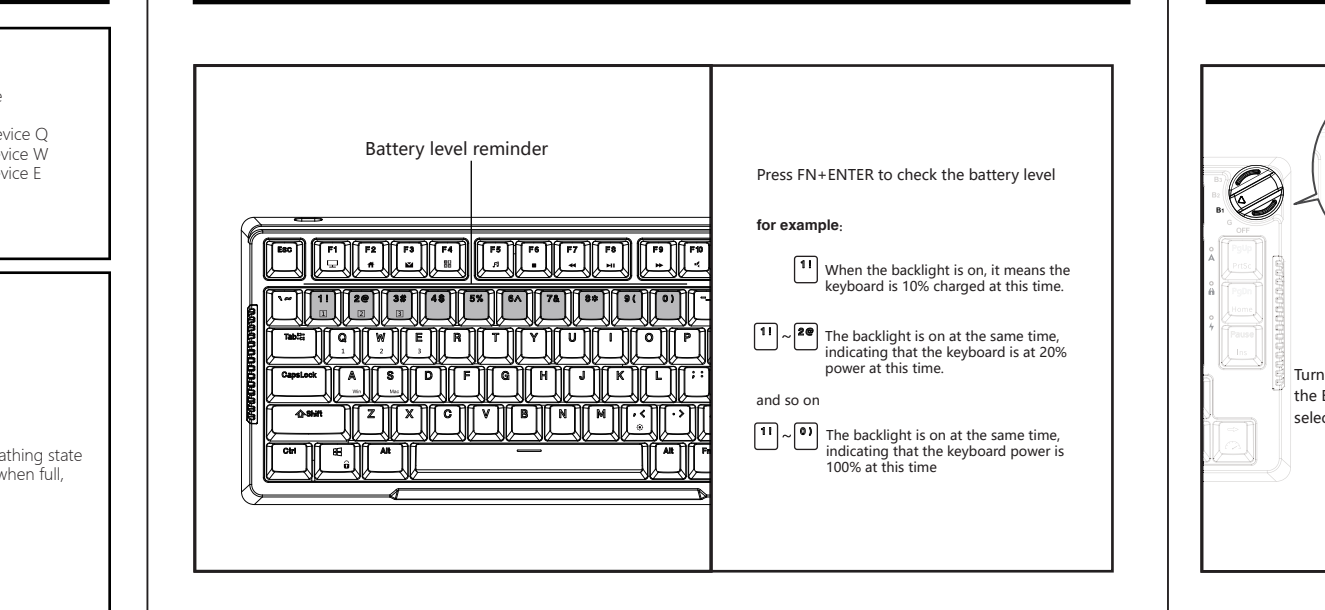
166-86601-02

PRODUCT BASIC

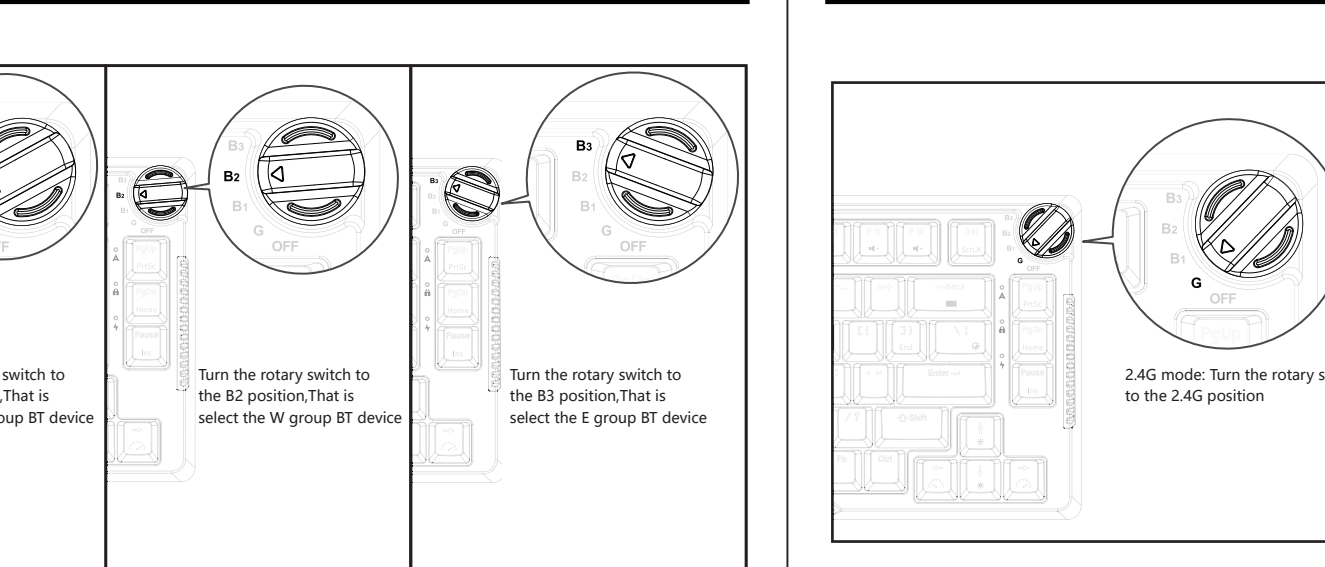


Size	335.8(L)×142.2(W)×40(H)±2
Layout	81 keys
Backlight	Single light/RGB
Switch	Mechanical switch

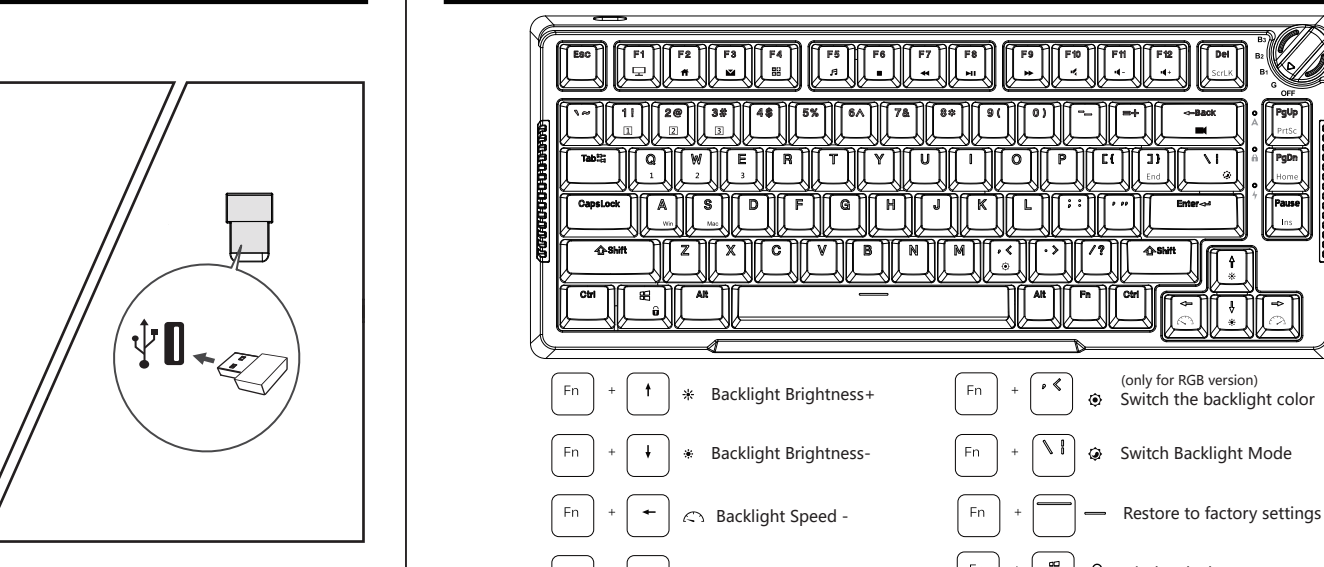
WIRED MODE & CHARGING



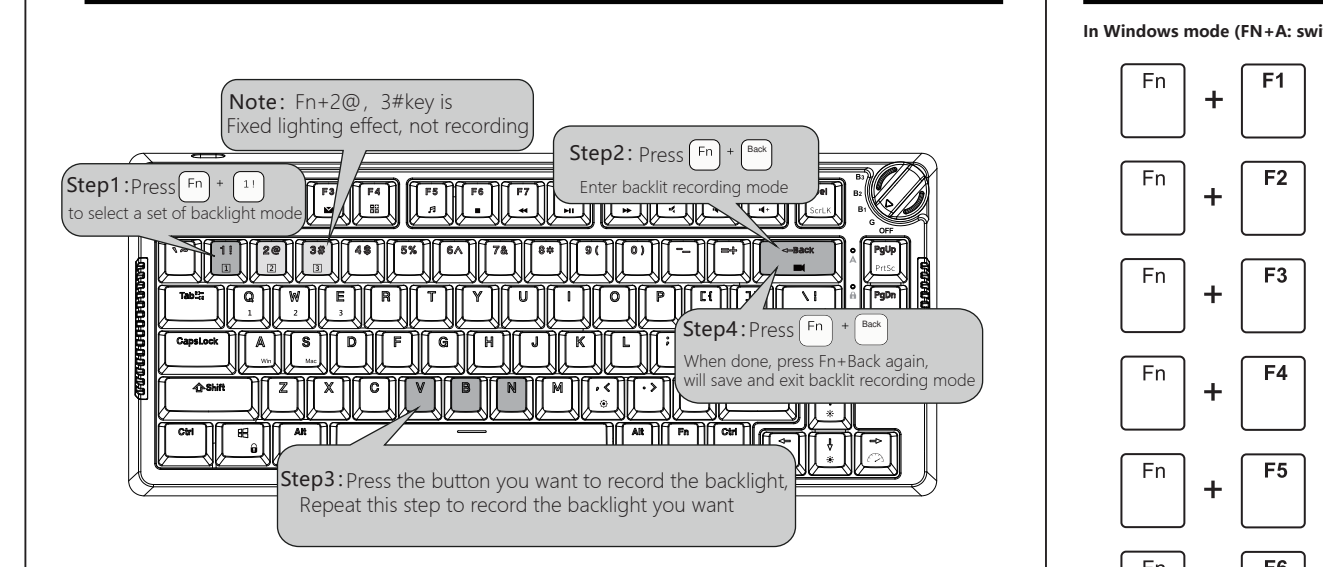
BATTERY LEVEL REMINDER



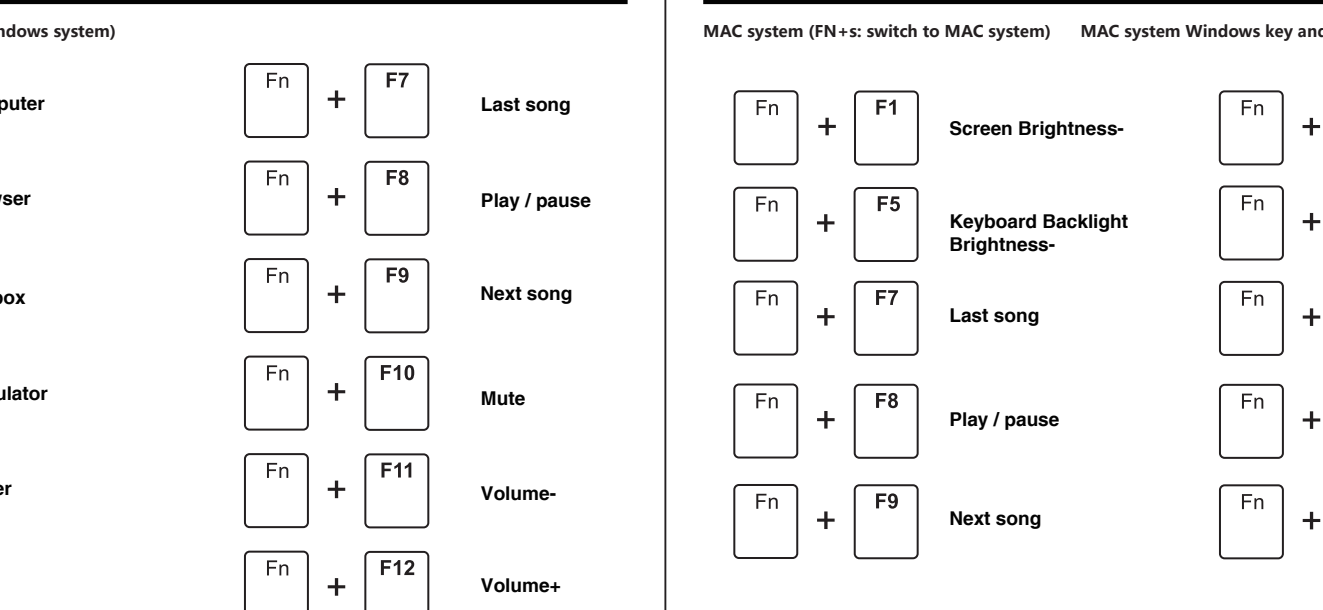
Bluetooth connection



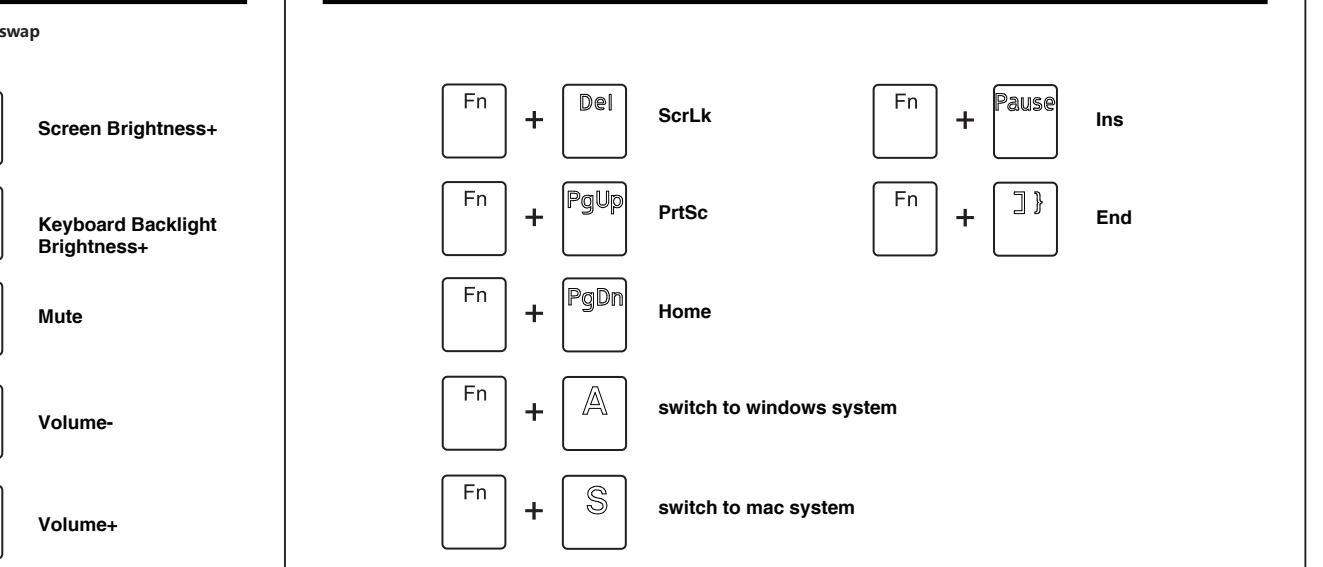
2.4G CONNECTION



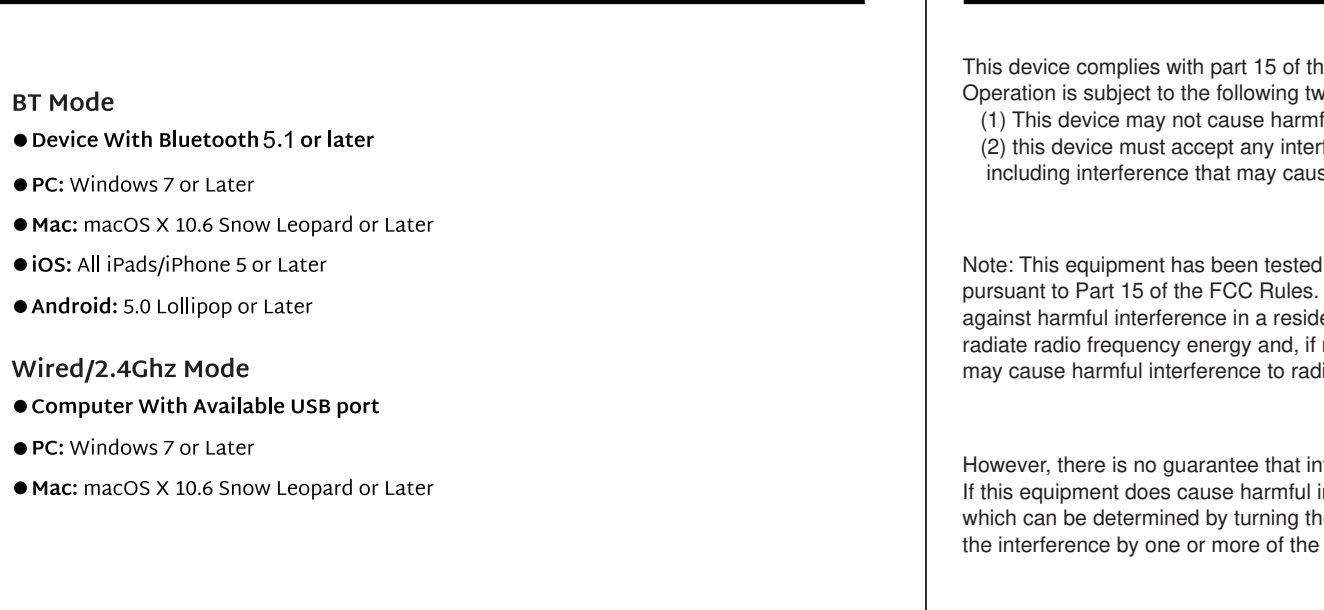
BACKLIGHT CONTROL



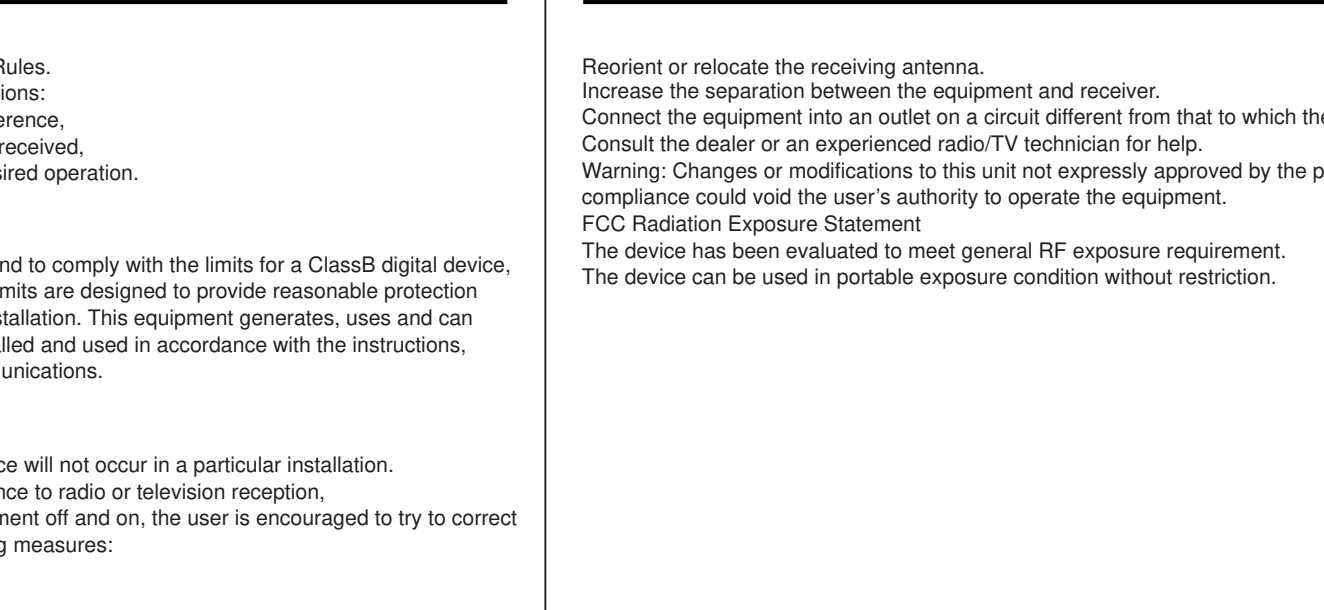
BACKLIGHT RECORDING METHOD



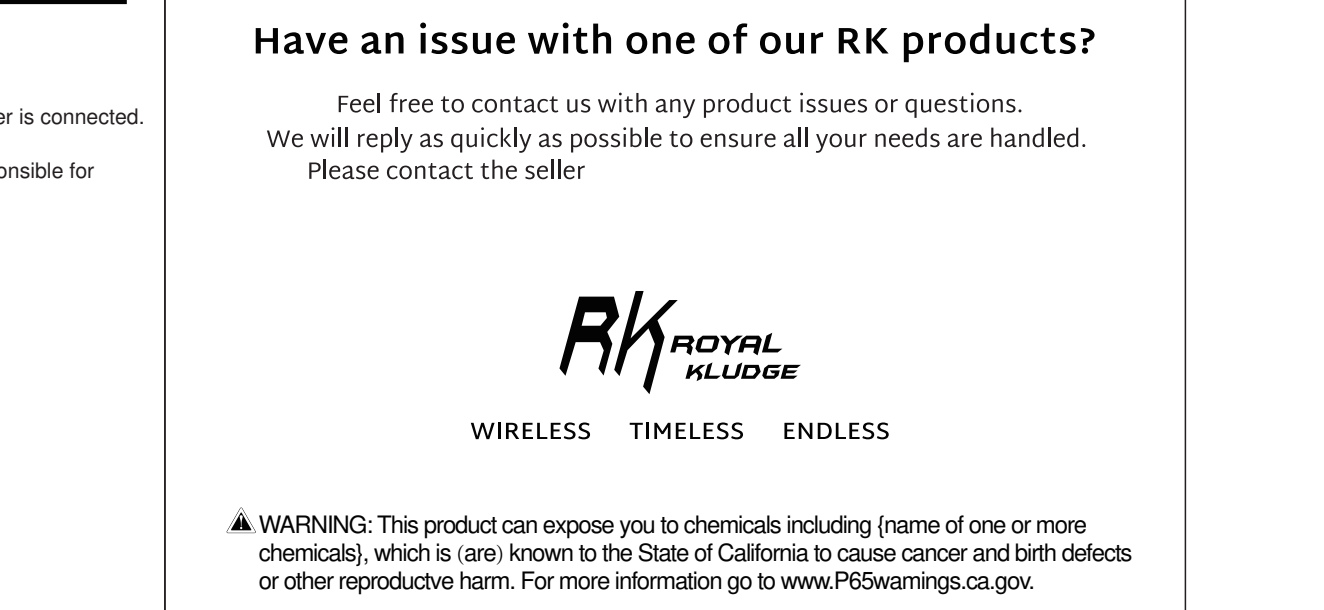
MULTIMEDIA KEYS FOR WINDOWS



MULTIMEDIA KEYS FOR MAC



THE SECOND COMBINATION OF FUNCTION KEYS



SYSTEM REQUIREMENTS

BT Mode

- Device With Bluetooth 5.1 or later
- PC: Windows 7 or Later
- Mac: macOS X 10.6 Snow Leopard or Later
- iOS: All iPads/iPhone 5 or Later
- Android: 5.0 Lollipop or Later

Wired/2.4Ghz Mode

- Computer With Available USB port
- PC: Windows 7 or Later
- Mac: macOS X 10.6 Snow Leopard or Later

FCC COMPLIANCE STATEMENT (USA only)

This device complies with part 15 of the FCC Rules. Operation is subject to the following two conditions:
(1) This device may not cause harmful interference.
(2) This device must accept any interference received, including interference that may cause undesired operation.

Note: This equipment has been tested and found to comply with the limits for a ClassB digital device, pursuant to Part 15 of the FCC Rules. These limits are designed to provide reasonable protection against harmful interference in a residential installation. This equipment generates, uses and can radiate radio frequency energy and, if not installed and used in accordance with the instructions, may cause harmful interference to radio communications.

However, there is no guarantee that interference will not occur in a particular installation. If this equipment does cause harmful interference to radio or television reception, which can be determined by turning the equipment off and on, the user is encouraged to try to correct the interference by one or more of the following measures:

FCC COMPLIANCE STATEMENT (USA only)

Reorient or relocate the receiving antenna.
Increase the separation between the equipment and receiver.
Connect the equipment into an outlet on a circuit different from that to which the receiver is connected.
Consult the dealer or an experienced radio/TV technician for help.
Warning: Changes or modifications to this unit not expressly approved by the part responsible for compliance could void the user's authority to operate the equipment.
FCC Radiation Exposure Statement
The device has been evaluated to meet general RF exposure requirement.
The device can be used in portable exposure condition without restriction.

Have an issue with one of our RK products?

Feel free to contact us with any product issues or questions.
We will reply as quickly as possible to ensure all your needs are handled.
Please contact the seller

WIRELESS TIMELESS ENDLESS

WARNING: This product can expose you to chemicals including (name of one or more chemicals), which is (are) known to the State of California to cause cancer and birth defects or other reproductive harm. For more information go to www.P65warnings.ca.gov.

Executive standard:GB/T 14081-2010