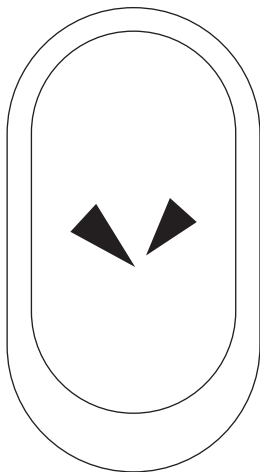


POCKETALK

POCKETALK[W] User Manual



Please check the web for the
latest version of the User Manual

<https://rd.snxt.jp/12449>

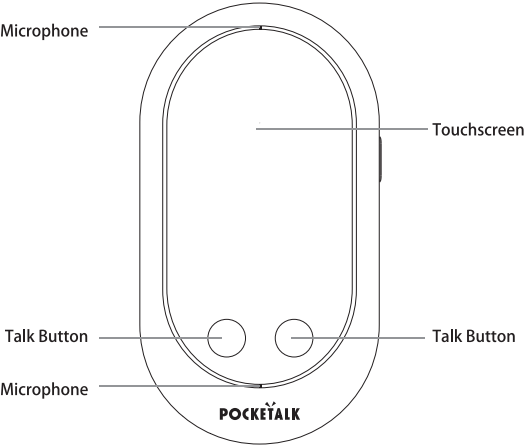
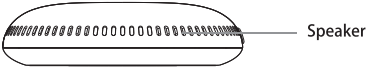


Contents

Appearance.....	02
Specifications.....	04
Safety Instructions	05
Safety and Handling Instructions.....	05
Recycling	06
Charging	07
Configuring System Language.....	07
Setting Up Network	08
Translating	09
Selecting the Languages for Translation	09
Viewing History	10
Adjusting Volume	10
Checking Battery Level	11
Power Management (Sleep Settings).....	11
Changing Text Size	12
Displaying Device Info	12
Updating	13
Removing Translation from Timeline	13
Factory Reset	14
Pocketalk Center	14
Inquiries.....	14

Learn about your portable translation device hardware and how to get started using it.

Appearance



Description of Parts

Screen: 2.4 inch touchscreen display

Talk Button: Press and hold down this button while speaking into the device.

Power Button:

- Press and hold for 4 seconds to turn the device ON or OFF.
- Push once to put to Sleep Mode or wake from sleep.

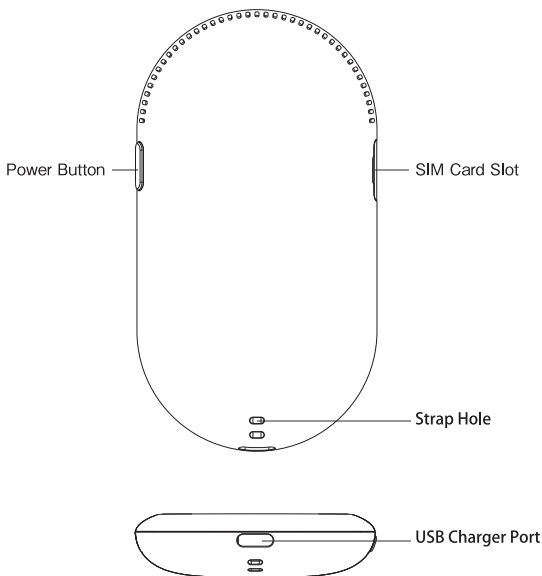
SIM Card Slot: Insert a nano-SIM card for mobile data connection.

USB Charger Port: Connect the USB charger cable (included) to charge the device.

Microphone: Dual microphones with noise-cancellation.

Speaker: Plays translated messages and other sounds.

Strap Hole: Connect straps to prevent dropping.



Specifications

Product Name	POCKETALK "W" Series
Processor	ARM Cortex53 Quad-Core 1.3GHz
Operating System	Custom OS (based on Android OS 8.1)
ROM	8GB
RAM	1GB
Display Screen	Touch Panel / 320 x 240 pixels
Battery	Rechargeable Lithium Ion Battery
Battery Life	2200mAh
Speaker	Built-in Speakers
Speaker Power	1.5 Watts x 2
Microphone	Dual Microphones with Noise-Cancellation
Mobile Network Connections	3G : W-CDMA 4G : FDD-LTE
SIM Card Slot	nano-SIM/embedded eSIM (on eSIM models only)
Supported Frequency Bands	W-CDMA: Band1, Band2, Band5, Band6, Band19 FDD-LTE: Band1, Band2, Band8, Band19, Band28b
Bluetooth	Bluetooth 4.0
Wi-Fi	802.11a/b/n/g 2.4GHz/5GHz
Operating Temperature	from 0°C to 40°C
Standby Temperature	from -20°C to 45°C
Battery Charging Port	USB Type-C
Weight	Approx. 100 grams
Size	110 x 59.8 x 15.8 mm

Safety Instructions

- To avoid injuries due to explosions, fires, or electric shocks, do not attempt to disassemble, repair or modify the device.
- Avoid leaving the device in hot temperature such as under direct sunlight, inside sun-heated vehicles, or near open fires or stoves.
- Avoid applying strong physical impact or throwing the device against anything.
- Do not use the device in humid places or pour water on it. If the device gets wet, make sure not to touch any of the connectors with your bare hands.
- If any fluid leakage is noticed, immediately discontinue usage. If any of the fluid gets on your clothes or body, immediately rinse and wash it off with plenty of water and consult a doctor.
- If any abnormal smell, deformation, discoloration, smoke or any other abnormalities such as malfunctions or breakdowns are noticed, immediately discontinue use and contact Customer Support.
- Note that the device may interfere with pacemakers, defibrillators and other electronic medical equipments. Make sure to keep plenty of distance between any such medical equipments when using device. For details on any specific regulations on such electronic medical equipments, please consult with the manufacturers of the equipments. If any interference is suspected between the device and pacemaker, defibrillator or electronic medical equipment, immediately discontinue using the device.

Safety and Handling Instructions

- Please read these instructions carefully before operating.
- Keep this manual for future reference, and use the device by following all instructions inside this manual.
- Use the bundled USB charger cable for charging the device.
- When using the device for the first time, please charge before use.
- To avoid dropping the device, place it on a flat and stable location when using.
- Please use in ambient temperatures from -20°C to 45°C and in places with low humidity which do not cause condensation.
- Please turn off the device before cleaning it.
- Do not expose the device to any liquids such as water. If the device gets wet, dry it with a dry, soft cloth.

- If the device is moved suddenly from a cold to warm surrounding, condensation may form on the casing of the device. In such case, before using the device, leave the device in a warm environment until the moisture evaporates.
- Do not block any ventilation openings.
- Do not expose the device to sand or dust.
- When connected to the charger, make sure that the device is not left in contact with your skin for long periods of time. Also, do not sit or sleep on top of the device or place it under your pillow or blanket.
- Do not place the device on top of any other electrical equipment.
- When using the device, make sure that the device (handheld unit) is held at least 5mm away from any body part, to abide by the technical standards for radio wave absorption by the human body and the international guidelines for radio wave protection.
- To avoid accidents, do not use the device while driving any vehicles, motorcycles or riding a bicycle. If using the device while walking, keep the volume to a level at which you will be able to hear surrounding sounds.
- Please take note of the volume settings when using the device with a headphone / earphone. Sudden loud sounds may harm your hearing.

Recycling

Box / Packaging

The regulations for disposing of the package materials may vary according to regions. Please check and follow the local rules and regulations when disposing the packaging. Identification marks for recyclable materials can be found on the outer box.

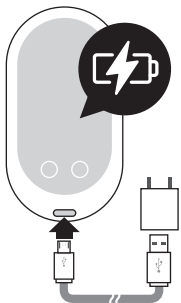
<About After-Sales Services>

This product comes bundled with a written warranty. Please read carefully the terms of the warranty, fill out the necessary fields and keep it stored safely.

The warranty period is for half-a-year after the purchase date. After-sales services will be provided based on the terms inside the warranty. For more details, please read carefully the terms inside the warranty.

For any inquiries about repairs or after-services during this warranty period, please consult the manufacturer's Customer Support Center (indicated in the below "Inquiries" section)

Charging



Charging the Device

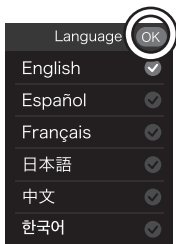
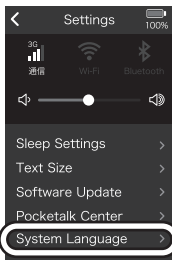
Connect the USB charger cable to the charger port as shown in the above illustration. If charging through a power outlet, a separate AC adapter (not included) will be required.



Turning ON / OFF the Device

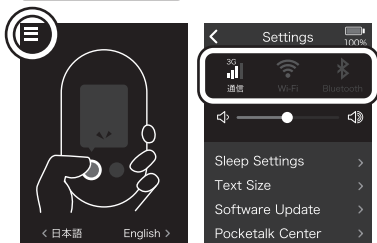
Press and hold down the power button (on the top-right part of the device) for 4 seconds.

Configuring System Language



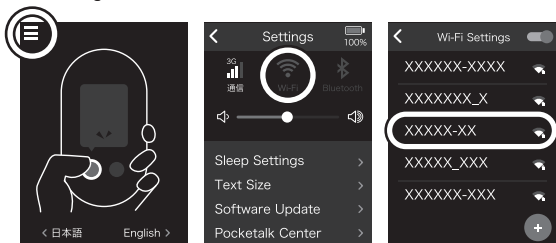
Tap on the Setting button at the top-left corner of the screen to open the Setting. Tap on [System Language] menu and after selecting the language, tap on the [OK] button at the top-right.

Setting Up Network



- Tap on the Setting button at the top-left.
- Tap on the [3G] or [Wi-Fi] or [Bluetooth] at the top of the screen.
- From the list of networks displayed, select the network to connect to.
- * For details on how to connect to specific network devices, please refer to the manuals provided by the device manufacturers.

Connecting to Wi-Fi



- Tap on the Setting button at the top-left.
- Tap on the [Wi-Fi] button.
- Select the SSID of the Wi-Fi to connect to and enter the Wi-Fi password to connect.

Translating

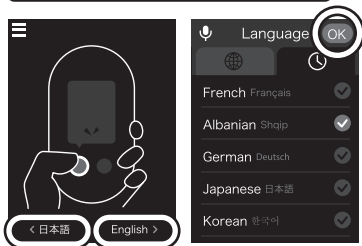


Speak into the device while holding down the button. Let go of the button to translate.

- Note that the translations require Internet access.
- Hold the device about 10cm away for best results.

The translation will be displayed on screen and read out. (Note: Some languages do not support audio read-outs. Please refer to the website for the list of audio supported languages)

Selecting the Languages for Translation



To change the languages for translation, tap on the language displayed at the bottom of the screen. Next, select the language from the list displayed and tap on the [OK] button at the top-right.

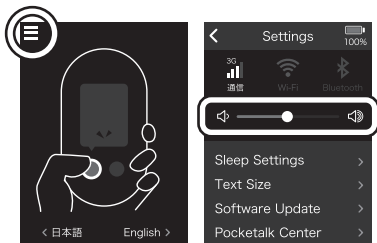
- Tap on the "microphone icon" at the top-left and speak in the language name (ex: "French") to run an audio search for the language from the list.

Viewing History



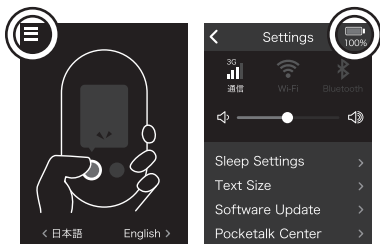
The history of translations will be displayed in timeline format, with the newest translations on bottom (the history can keep up to 10,000 translations). Tap hold on the translation to remove or add them to your "Favorites" (the Favorites can hold 500 translations)

Adjusting Volume



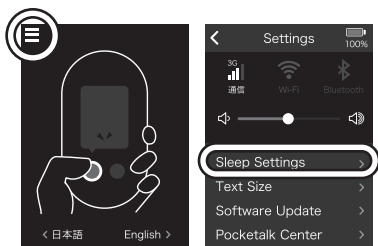
To adjust the volume, tap on the Setting button at the top-left corner of the screen. Drag the volume slider menu to raise / lower the volume.

Checking Battery Level



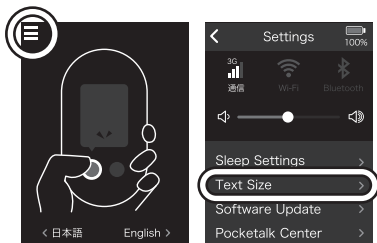
To check the remaining battery level, tap on the Setting button at the top-left corner of the screen. The battery level is displayed at the top-right corner of the Setting screen.

Power Management (Sleep Settings)



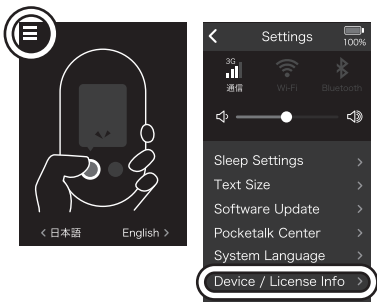
To change the current Sleep Settings, tap on the Setting button at the top-left corner of the screen. Then tap on the [Sleep Settings] menu and adjust the time set for device to automatically go in to Sleep Mode.

Changing Text Size



To change the text size, tap on the Setting button at the top-left corner of the screen and then tap on the [Text Size] menu to select the font size.

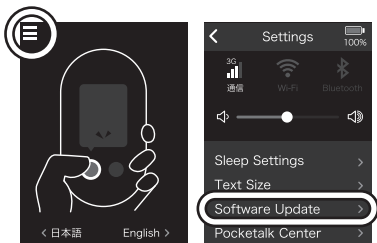
Displaying Device Info



To display the device info, tap on the Setting button at the top-left corner of the screen and then tap on the [Device / License Info] menu. You can confirm the following from this menu:

- Device Info and POCKETALK version number
- License Information
- Regulatory (certifications)

Updating



To check for the latest updates, tap on the Setting button at the top-left corner of the screen and then tap on the [Software Update] menu.

Follow the instructions on screen to update to the latest state.

Note: Battery level needs to be above 50% and the device needs to be connected to Wi-Fi for updates to run.

Removing Translation from Timeline



Tap hold on the translation in the timeline and select [Delete] to remove it from the timeline.

Factory Reset

To reset the device to the factory default state or clear the translation history, tap on the Setting button at the top-left corner of the screen and then select the [Reset] menu.

- To completely clear the translation history, select the [Clear translation history] menu.
- To reset the device completely, select the [Restore factory settings] menu. Note that the application version will remain the same even after factory reset.

Pocketalk Center

To use "POCKETALK Center", tap on the Setting button at the top-left corner of the screen and then tap on the [POCKETALK Center] menu.

Follow the instructions displayed to create your account.

By using the POCKETALK Center, you will be able to check your translation history from other devices such as your PC or smartphone.

Inquiries

Inquiries about the product can be made from the below Customer Support webpage.

<http://rd.snxt.jp/77679>

For inquiries about the after-sales services, please read the "SOURCENEXT Product Support Terms" Found at the below URL.

<http://rd.snxt.jp/24617>

Please note that Customer Support is offered only in Japanese language.

FCC Warning

This device complies with part 15 of the FCC Rules. Operation is subject to the following two conditions: (1) This device may not cause harmful interference, and (2) this device must accept any interference received, including interference that may cause undesired operation.

Any Changes or modifications not expressly approved by the party responsible for compliance could void the user's authority to operate the equipment.

Note: This equipment has been tested and found to comply with the limits for a Class B digital device, pursuant to part 15 of the FCC Rules. These limits are designed to provide reasonable protection against harmful interference in a residential installation. This equipment generates uses and can radiate radio frequency energy and, if not installed and used in accordance with the instructions, may cause harmful interference to radio communications. However, there is no guarantee that interference will not occur in a particular installation. If this equipment does cause harmful interference to radio or television reception, which can be determined by turning the equipment off and on, the user is encouraged to try to correct the interference by one or more of the following measures:

- ▶ -Reorient or relocate the receiving antenna.
- ▶ -Increase the separation between the equipment and receiver.
- ▶ -Connect the equipment into an outlet on a circuit different from that to which the receiver is connected.
- ▶ -Consult the dealer or an experienced radio/TV technician for help.

Specific Absorption Rate (SAR) information:

This POCKETALK meets the government's requirements for exposure to radio waves. The guidelines are based on standards that were developed by independent scientific organizations through periodic and thorough evaluation of scientific studies. The standards include a substantial safety margin designed to assure the safety of all persons regardless of age or health.

FCC RF Exposure Information and Statement

The SAR limit of USA (FCC) is 1.6 W/kg averaged over one gram of tissue. Device types: POCKETALK (FCC ID: 2AOJA-W1P) has also been tested against this SAR limit. The highest SAR value reported under this standard during product certification for use at the body is 0.441W/kg,Front to face is 0.335 W/kg, This device was tested for typical body-worn operations with the back of the handset kept 5mm from the body,kept 10mm Front to face,To maintain compliance with FCC RF exposure requirements, use accessories that maintain a 5mm separation distance between the user's body and the 10 mm Front to face. The use of belt clips, holsters and similar accessories should not contain metallic components in its assembly. The use of accessories that do not satisfy these requirements may not comply with FCC RF exposure requirements, and should be avoided.

Body-worn Operation

This device was tested for typical body-worn operations. To comply with

RF exposure requirements, a minimum separation distance of 5mm must be maintained between the user's body and 10 mm Front to face, including the antenna. Third-party belt-clips, holsters, and similar accessories used by this device should not contain any metallic components. Body-worn accessories that do not meet these requirements may not comply with RF exposure requirements and should be avoided. Use only the supplied or an approved antenna.