

XTOOL

SafetyPro™ IF2

MXA-K012-001



Quick Start Guide

List of items - - - - - 01

Meet xTool SafetyPro™ IF2 - - - - - 01

Connect xTool SafetyPro™ IF2 - - - - - 02

(Optional) Wall mounting - - - - - 07

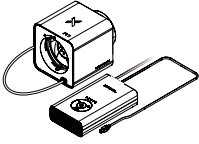
Use xTool SafetyPro™ IF2 - - - - - 09

Use with XCS - - - - - 09

Indicator description - - - - - 09

Maintenance - - - - - 10

List of items



Inline fan and controller



Protective cover



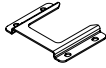
Ribbed plastic anchors



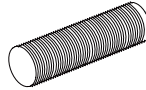
Screws



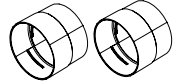
Bluetooth dongle



Wall-mounting fixture



Smoke exhaust pipe



Pipe connector 1



Pipe connector 2



Pipe clamp



Hex key



Quick start guide

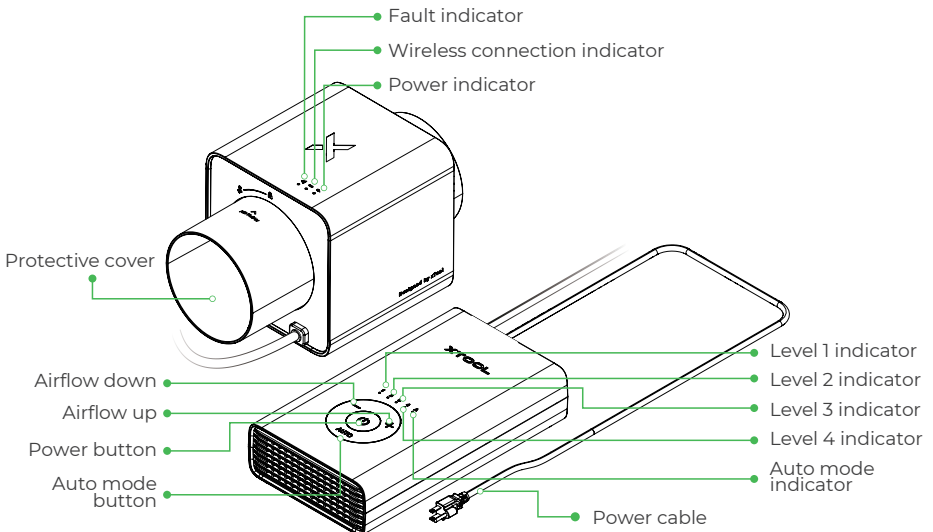


Safety instructions

Note:

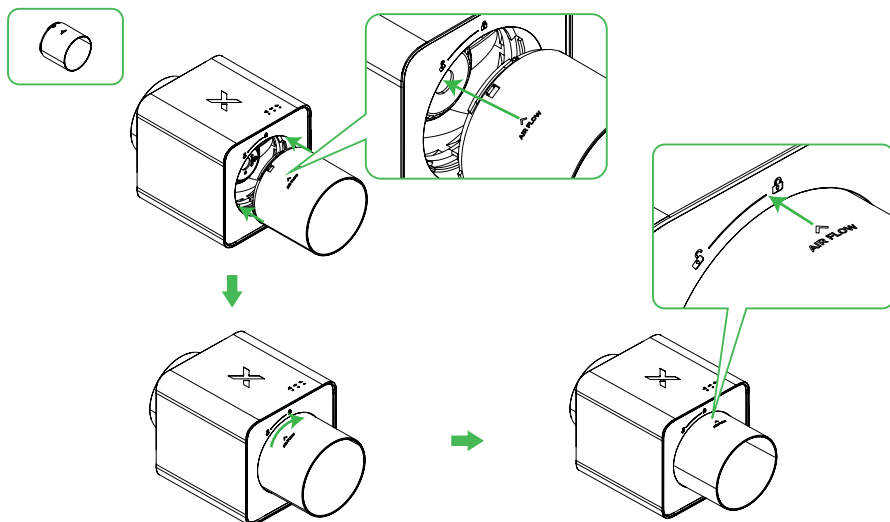
- The power cable varies according to the region in which the product is delivered.
- Pipe connector 1 is applicable to xTool S1 and F1 Ultra.
- Pipe connector 2 is applicable to xTool M1 Ultra, M1, F1, P2, P2S, D1, and D1 Pro.

Meet xTool SafetyPro™ IF2



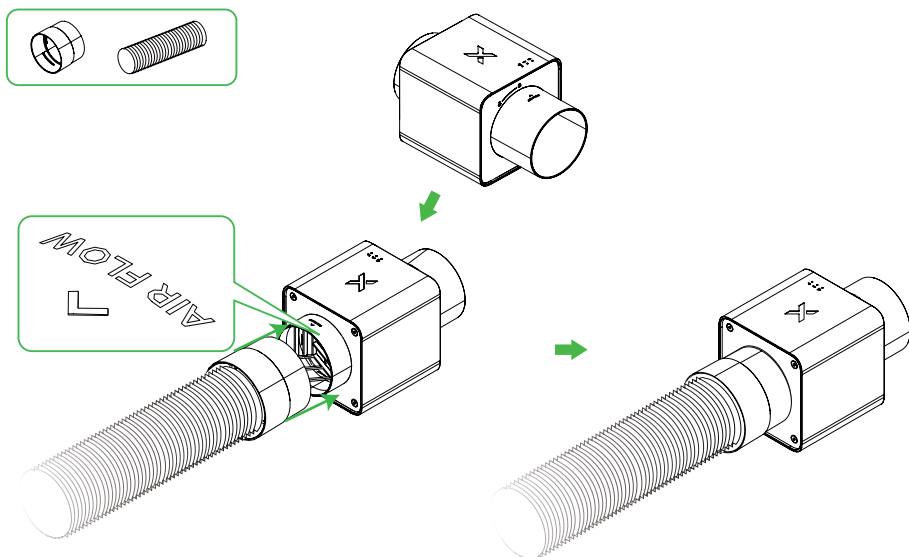
Connect xTool SafetyPro™ IF2

1 Install the protective cover



■ Install the protective cover to the inline fan. Align the airflow inlet label with the locking symbol as illustrated.

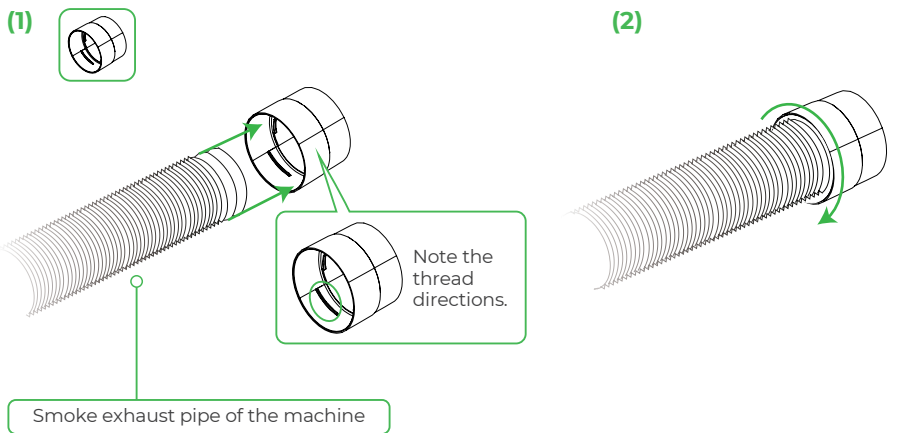
2 Install the smoke exhaust pipe of the xTool SafetyPro™ IF2



■ Connect the pipe connector and pipe included in the pack to the airflow outlet of the fan.

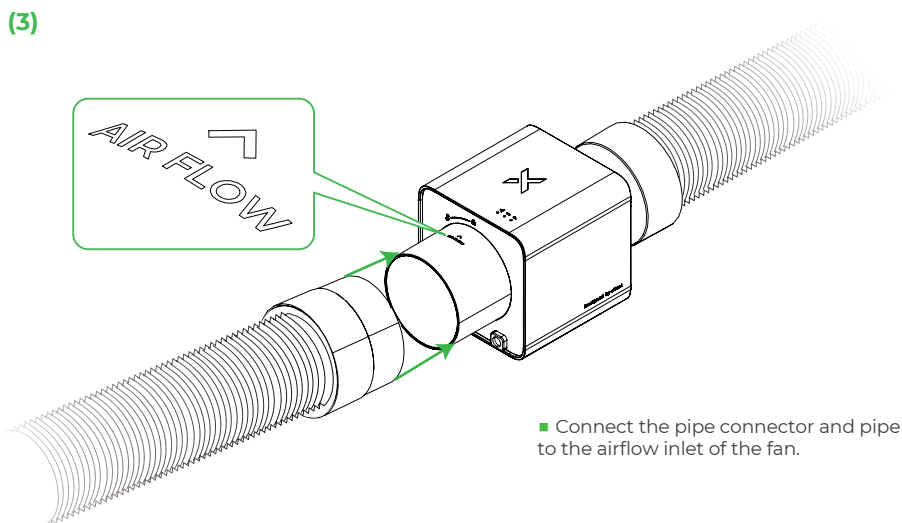
3 Connect the smoke exhaust pipe of xTool machines

Applicable to xTool S1 and F1 Ultra



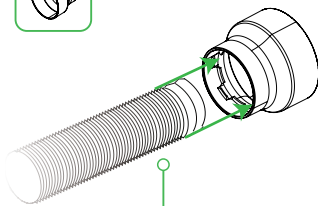
■ Connect the smoke exhaust pipe of the machine to pipe connector 1.

■ Rotate the pipe connector counterclockwise to secure the pipe and connector.



Applicable to xTool M1 Ultra and F1

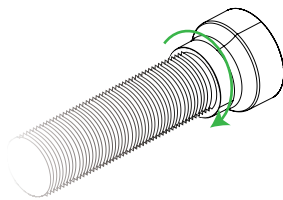
(1)



Smoke exhaust pipe of the machine

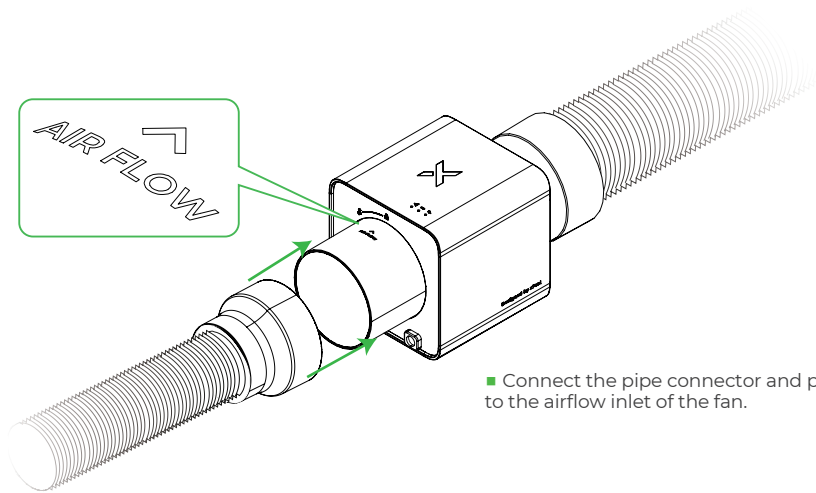
- Connect the smoke exhaust pipe of the machine to pipe connector 2.

(2)



- Rotate the pipe connector counterclockwise to secure the pipe and connector.

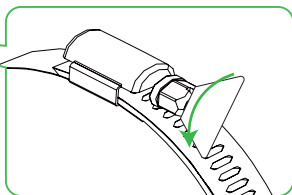
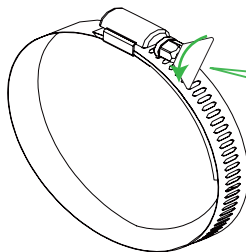
(3)



- Connect the pipe connector and pipe to the airflow inlet of the fan.

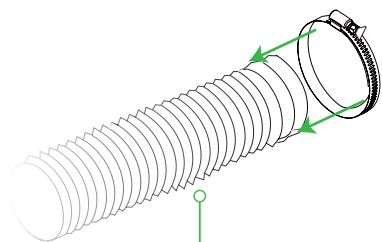
Applicable to xTool M1, P2, P2S, D1, and D1 Pro

(1)



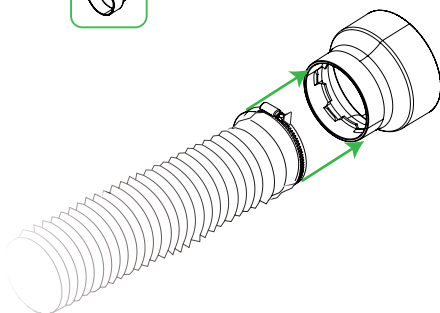
- Loosen the pipe clamp.

(2)

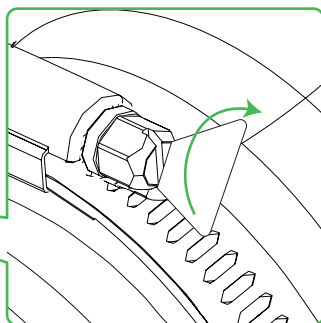
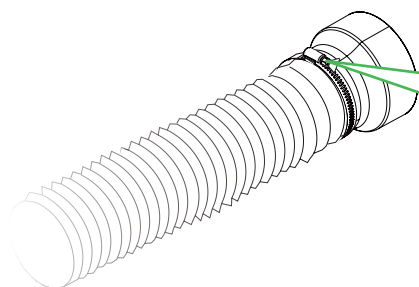


Smoke exhaust pipe of the machine

(3)

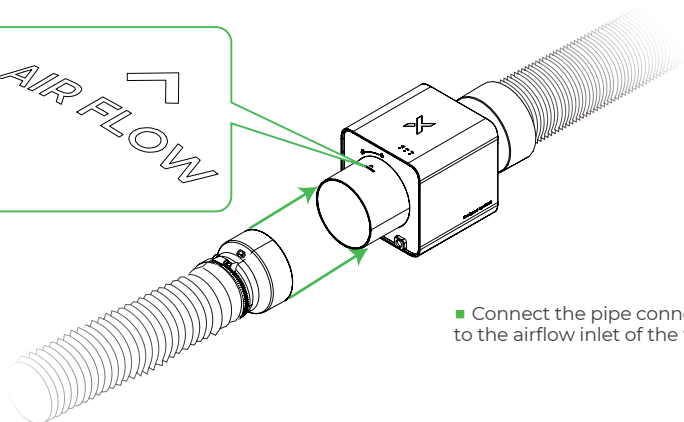
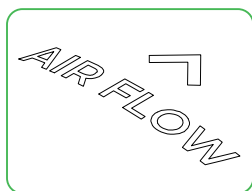


(4)



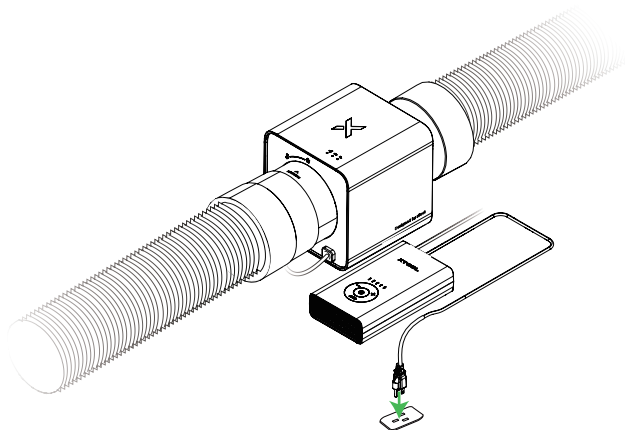
■ Tighten the pipe clamp.

(5)



■ Connect the pipe connector and pipe to the airflow inlet of the fan.

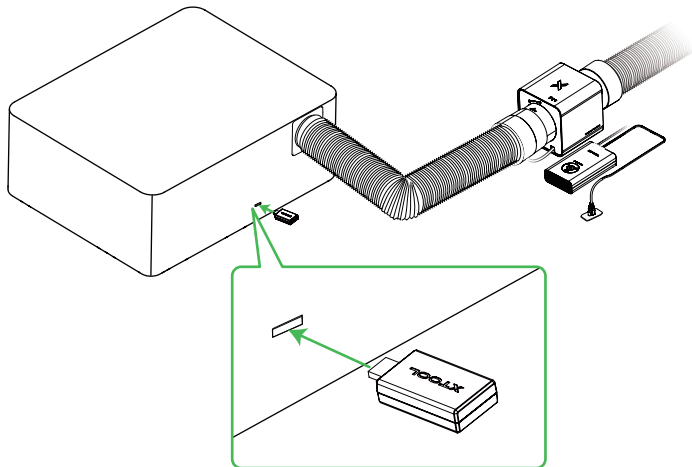
4 Connect to a power supply



5 Set up wireless connection



A wireless connection can be established only with xTool S1, M1 Ultra, P2S, and F1 Ultra.



■ Connect the Bluetooth dongle to the extension port of the xTool machine. The preceding figure is for reference only.

■ After the Bluetooth dongle is connected, the connection between the inline fan and the xTool machine is automatically established. The machine's **Device settings** page on XCS displays information about the inline fan. For more details, see "Use with XCS."

■ To pair again, press the power button of the inline fan for at least five seconds. The wireless connection indicator blinks white.

(Optional) Wall mounting

- To fix the device in a place, you can fasten it to a wall-mounting fixture before installing the smoke exhaust pipes.



The following tools are required but not included in the pack.



Screwdriver



Wrench

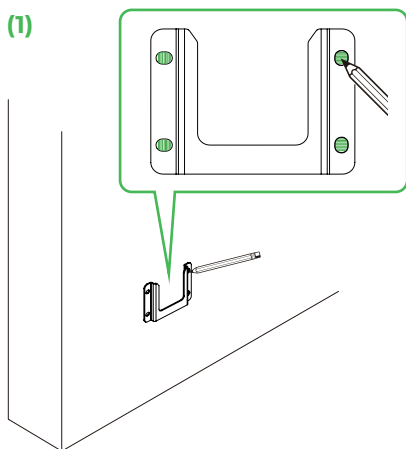


Pencil

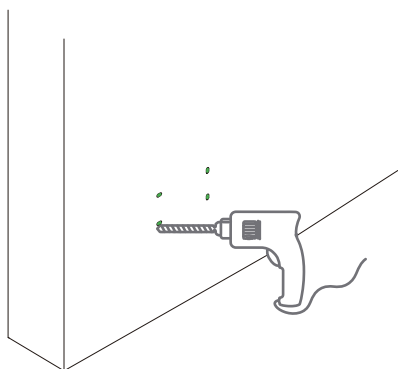


Drill

(1)

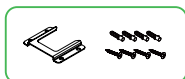


- Place the wall-mounting fixture against the wall, determine the proper position, and mark each hole's location with a pencil.

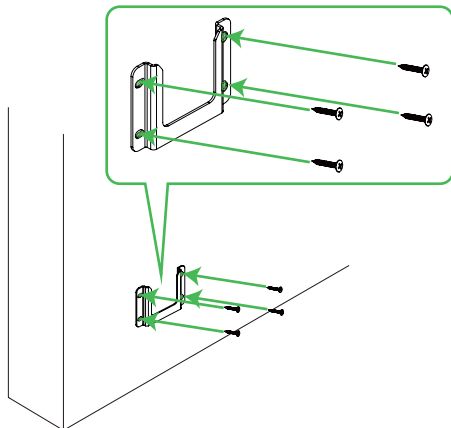


- Drill the four holes marked.

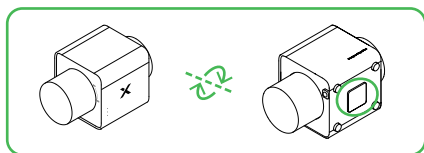
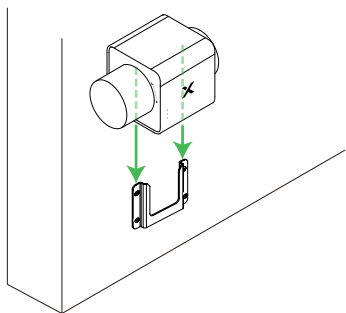
(2)



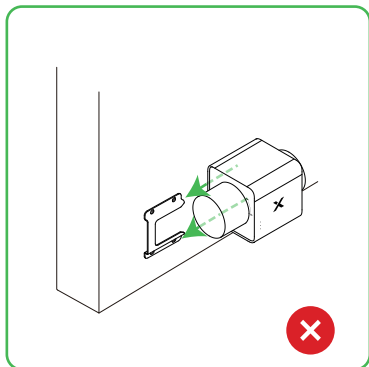
- To better secure the screws, you can hammer the ribbed plastic anchors into the holes before applying the screws.



(3)

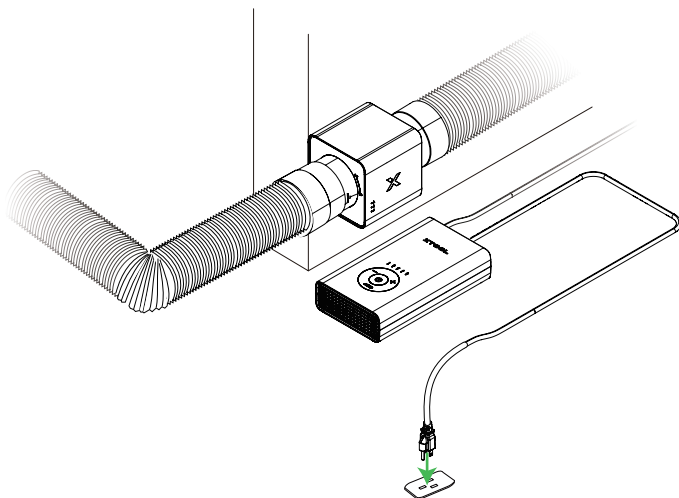


■ Slide the fan body along the fixture, with the wall-mounting bracket of the fan fitting on the fixture.

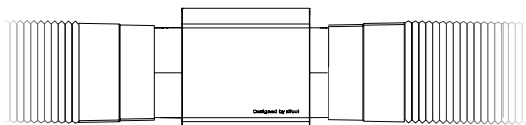


■ Never mount the wall-mounting fixture sideways or mount on a ceiling. Otherwise, the inline fan may not be fixed properly.

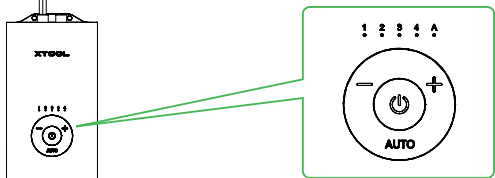
(4)



Use xTool SafetyPro™ IF2



■ In AUTO mode, the device adjusts the fan speed based on processing materials. You can also press **+** or **-** to switch between the four levels. Note that AUTO mode is available only for xTool S1, M1 Ultra, F1 Ultra, and P2S.



Use with XCS

Download XCS







Use xTool SafetyPro™ IF2 on XCS



support.xtool.com/article/1644

Indicator description

Indicator	Indicator status	Device status
Power indicator 	Solid green	Connected to power
Wireless connection indicator 	Blinking white	Connecting to the machine ...
	Solid white	Connected to the machine
Fault indicator 	Solid red, with the buzzer beeps once every 8 seconds	■ Fan blocked due to dust build-ups ■ Abnormal fan speed
	Blinking red, with the buzzer beeps twice every 8 seconds	Protective cover not installed or incorrect installation of the cover
Auto mode indicator 	Solid white	Working in AUTO mode
	Blinking white	Failed to work in AUTO mode due to mismatched machine model or incorrect Bluetooth connection

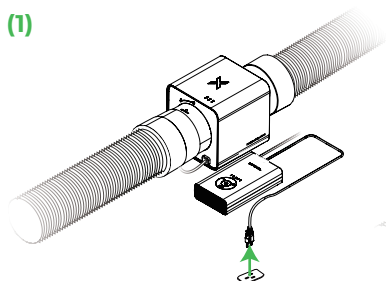
Maintenance

Clean the fan

In the case of abnormal fan speed or poor smoke exhaust due to dust build-ups, you need to clean the fan blade.

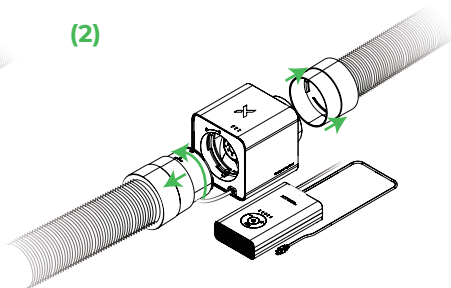
1. Remove the fan

(1)



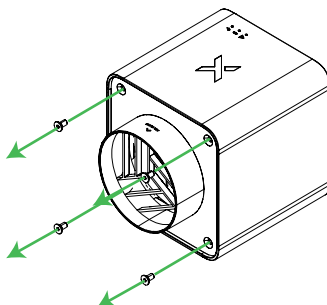
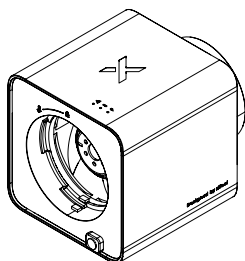
■ Disconnect the power cable.

(2)



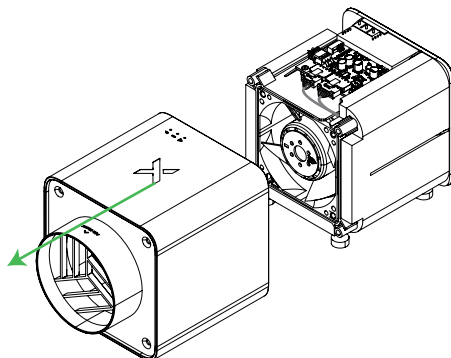
■ Remove the protective cover by rotating it counterclockwise. Then remove the pipe connector at the other side.

(3)

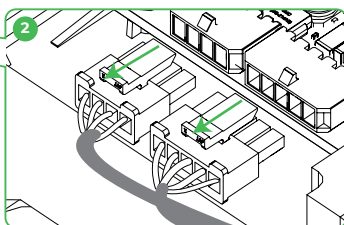
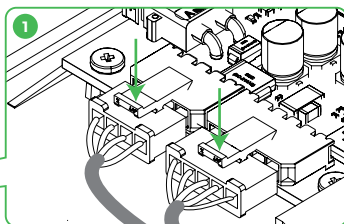
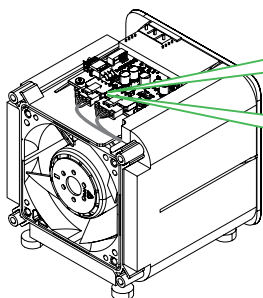


■ Remove the four screws securing the case using the hex key included in the package.

(4)

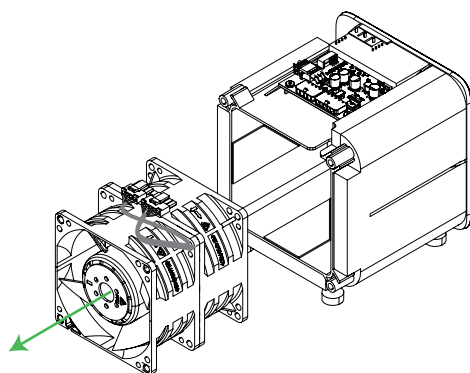


(5)



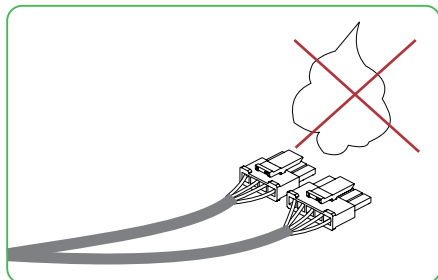
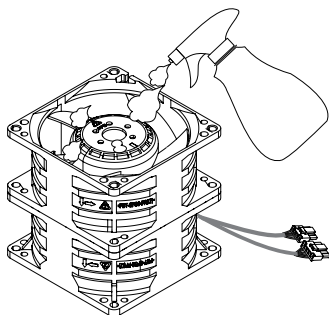
■ Hold one terminal and press the position illustrated using your thumb. Then take out the terminal. Repeat the steps and take out the other terminal.

(6)



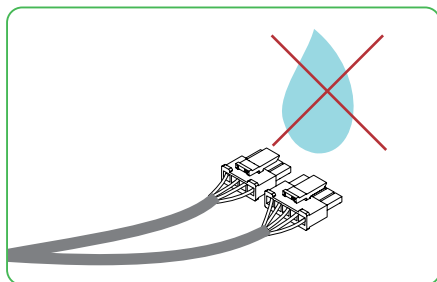
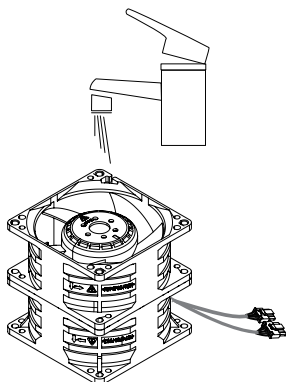
2. Clean the fan

(1)



■ Clean the fan blade using a degreasing cleaner. Avoid applying the cleaner on the terminals.

(2)

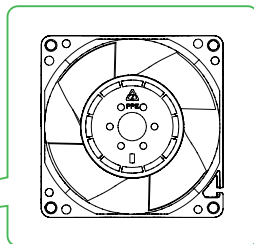
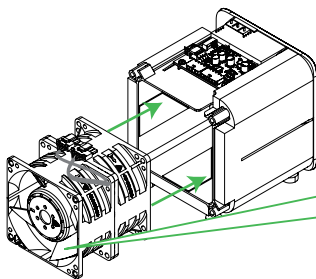


■ Wash the fan blade with a gentle stream of water. Ensure that water does not come into contact with the terminals.

Note: To prevent damage to the fan, do not use a high-pressure water spray to rinse the fan or immerse the fan completely in water.

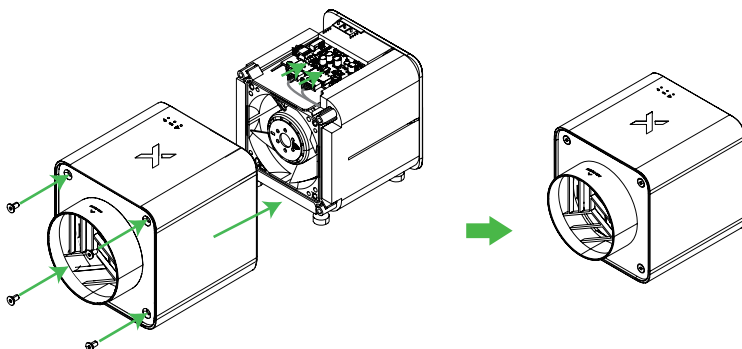
3. Install the fan back

(1)



■ When the fan is dry, put it back with the four-blade side facing outward.

(2)



■ Insert the terminals back in place and install the cover back.

XTOOL