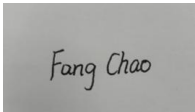


# AUT Report

Product Model: EAP723

Manufacturer: TP-Link Systems Inc.

Test Date: 2024.11.18

Tested By: Fang Chao 

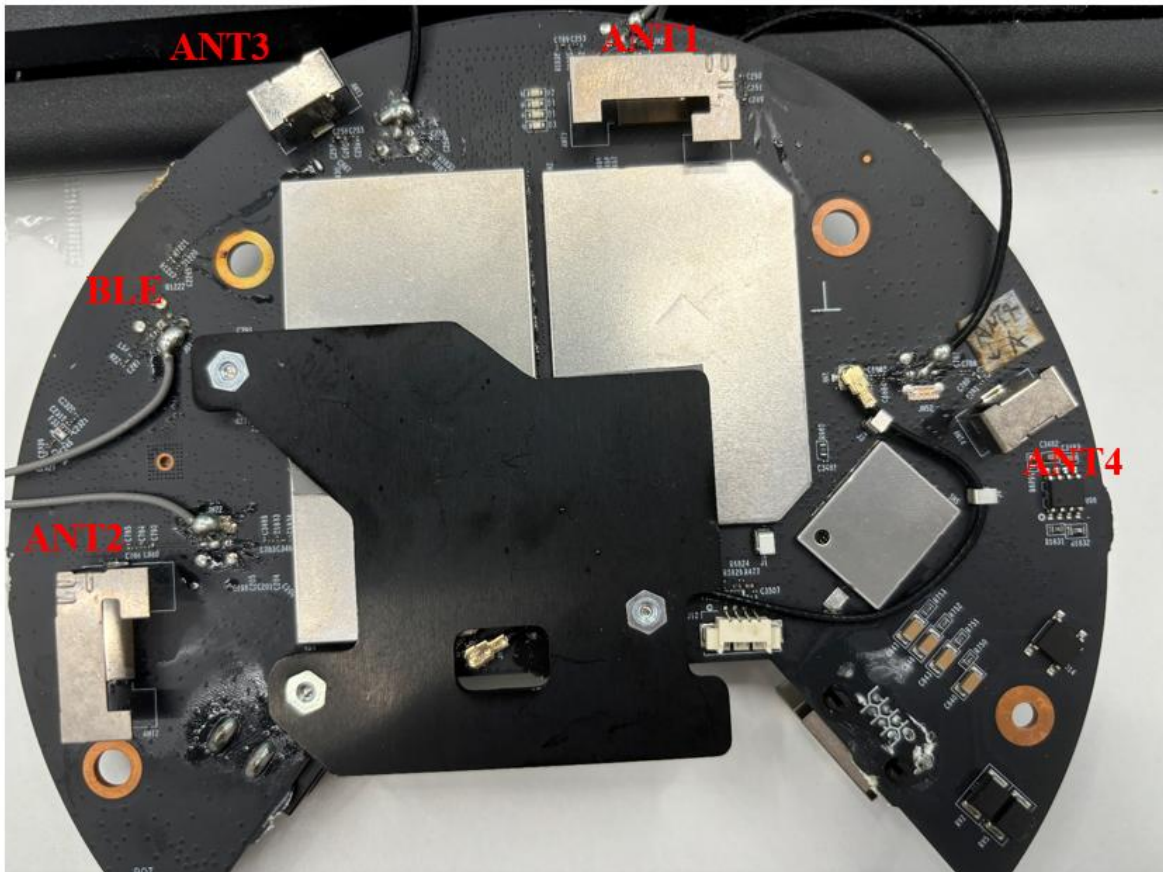
TP-Link Systems Inc.  
10 Mauchly, Irvine, CA 92618

# Index

<b>1. Antenna Distribution.....</b>	<b>3</b>
<b>2. Electrical Characteristics .....</b>	<b>3</b>
<b>3. Gain and Radiation Pattern .....</b>	<b>3</b>
3.1 Measurement Procedure .....	4
3.2 Test Setup .....	5
3.3 S Parameter Test Data .....	6
3.4 Antenna Peak Gain .....	8
3.5 Antenna Radiation Pattern.....	9

# 1. Antenna Distribution

EAP723



## 2. Electrical Characteristics

Ant1	
Frequency	2400 ~ 2500MHz
Impedance	50Ohm
Antenna Type	IFA
Antenna Gain	3.00dBi@2400~2500MHz
Radiation pattern	Omni-Directional
P/N	6035500202

Ant2	
Frequency	2400 ~ 2500MHz
Impedance	50Ohm
Antenna Type	IFA
Antenna Gain	3.00dBi@2400~2500MHz
Radiation pattern	Omni-Directional
P/N	6035500202

Ant3	
Frequency	5150 ~ 5850MHz



Rayzone2800. All six surfaces of the anechoic chamber were pasted with absorbing materials. And the chamber was calibrated by the authoritative third-party lab every year. The antenna anechoic chamber measurement system adopted a 13-probe multi-probe system. The probe antennas were evenly distributed on the spherical surface surrounding the EUT, and their operating frequency was 600MHz~8.5GHz.

During the measurement, the probe antennas were rotated in the  $\theta$  direction under the control of the probe holder to sample the near-field data at the  $\theta$  angle. At the same time, the EUT rotated with the turntable in the  $\phi$  direction to sample the near field data at the  $\phi$  angle. The sampling accuracy was  $15^\circ$ . The system diagram was shown in Figure 3-2. From the sampling results, the EUT's near-field test data of  $\theta$  component,  $\phi$  component and total component could be obtained.

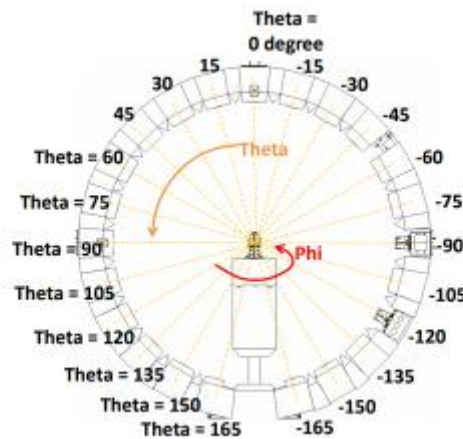


Figure 3-2

Before the measurement, calibrated the vector network analyzer, and then connected the input end of each antenna to the output end of the vector network analyzer, and evenly the antennas to be measured.

Test Equipment listed below:

Equipments	Model	Manufacturer	S/N	Cali. Interval	Cali. Due Date
Chamber	Rayzone2800	GTS(General Test System)	MY5347043 5	12months	2026/01/15
Vector Network Analyzer	E5071C	Keysight	MY46315238	24months	2026/03/13
GTS MaxSign100 Software	V2.1	GTS(General Test System)	/	/	/

## 3.2 Test Setup

The test setup was shown in Figure 3-3, 3-4:



Figure 3-3

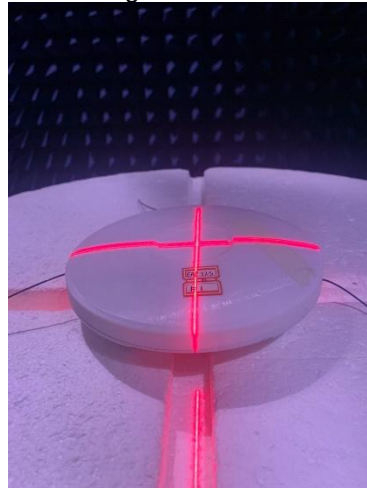
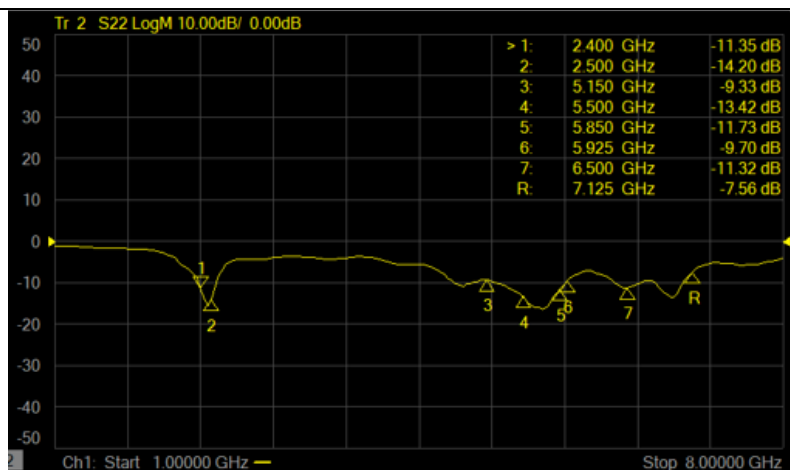


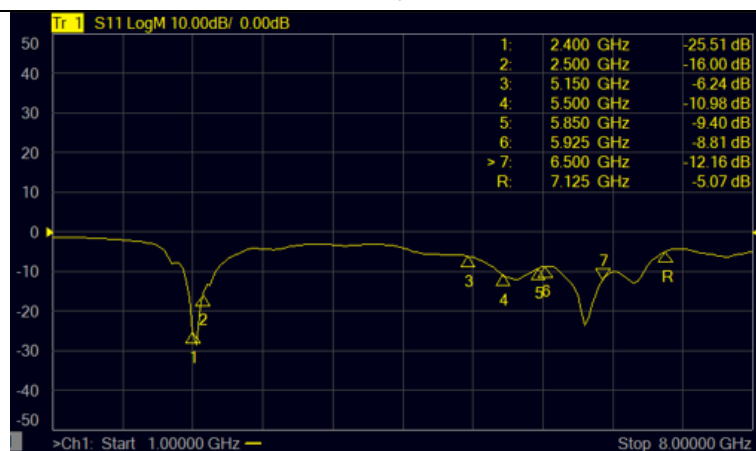
Figure 3-4

### 3.3 S Parameter Test Data

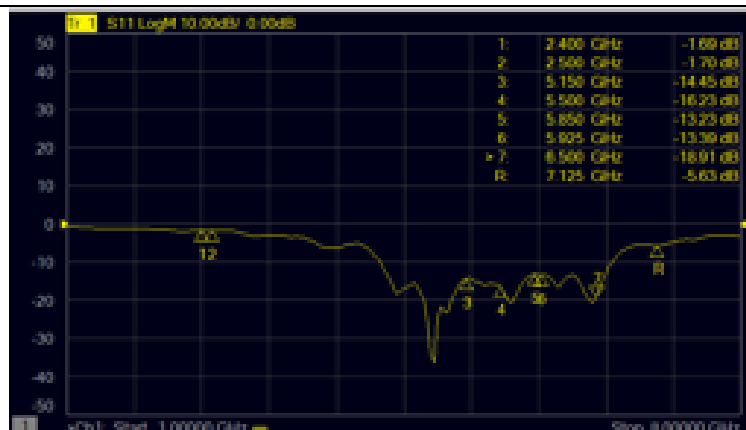
Ant1



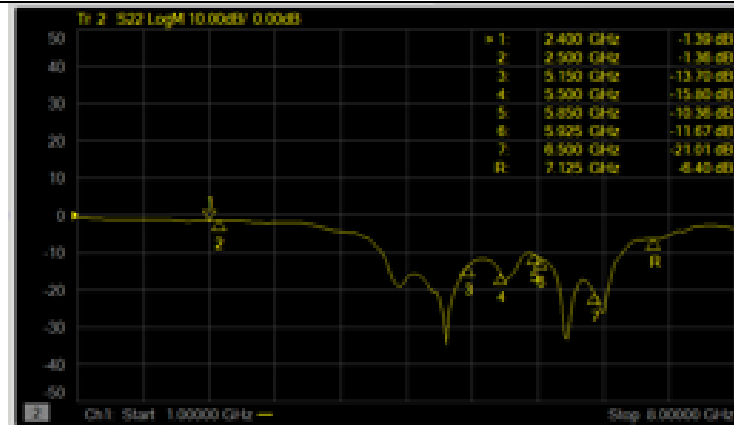
Ant2



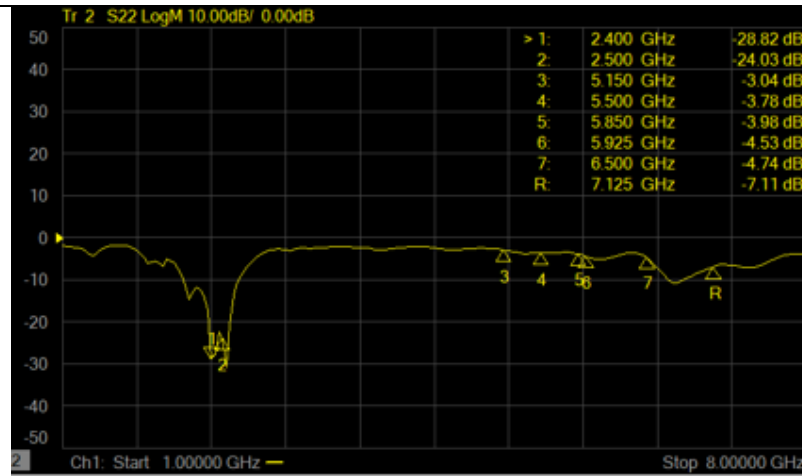
Ant3



Ant4



Ant5



### 3.4 Antenna Peak Gain

Frequency	2.45GHz 2400~2500MHz	5.2GHz 5150~5250MHz	5.3GHz 5250~5350MHz	5.6GHz 5470~5725MHz
Ant1 MaxGain(dBi)	3.00	/	/	/
Ant2 MaxGain(dBi)	3.00	/	/	/
Ant3 MaxGain(dBi)	/	3.00	3.00	3.00
Ant4 MaxGain(dBi)	/	3.00	3.00	3.00
Ant5 MaxGain(dBi)	3.00	/	/	/
Ant1 Polarization/ $\Phi$ (°)/ $\theta$ (°)	Theta/90/45	/	/	/
Ant2 Polarization/ $\Phi$ (°)/ $\theta$ (°)	Theta/120/45	/	/	/
Ant3 Polarization/ $\Phi$ (°)/ $\theta$ (°)	/	Theta/315/60	Theta/135/60	Theta/210/60
Ant4 Polarization/ $\Phi$ (°)/ $\theta$ (°)	/	Phi/0/60	Phi/0/60	Theta/180/60
Ant5 Polarization/ $\Phi$ (°)/ $\theta$ (°)	Theta/120/45	/	/	/



Max Gain(dBi)	3.00	3.00	3.00	3.00
---------------	------	------	------	------

Frequency	5.8GHz 5725~5895MHz
Ant1 MaxGain(dBi)	/
Ant2 MaxGain(dBi)	/
Ant3 MaxGain(dBi)	3.00
Ant4 MaxGain(dBi)	3.00
Ant5 MaxGain(dBi)	/
Ant1 Polarization/ $\Phi$ (°)/ $\theta$ (°)	/
Ant2 Polarization/ $\Phi$ (°)/ $\theta$ (°)	/
Ant3 Polarization/ $\Phi$ (°)/ $\theta$ (°)	Theta/135/60
Ant4 Polarization/ $\Phi$ (°)/ $\theta$ (°)	Theta/0/60
Ant5 Polarization/ $\Phi$ (°)/ $\theta$ (°)	/

### 3.5 Antenna Radiation Pattern

