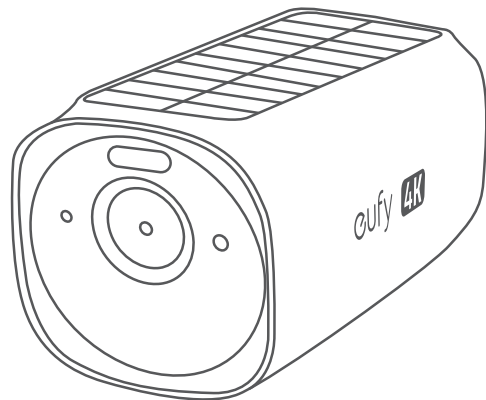


eufy

eufy



# EufyCam S330

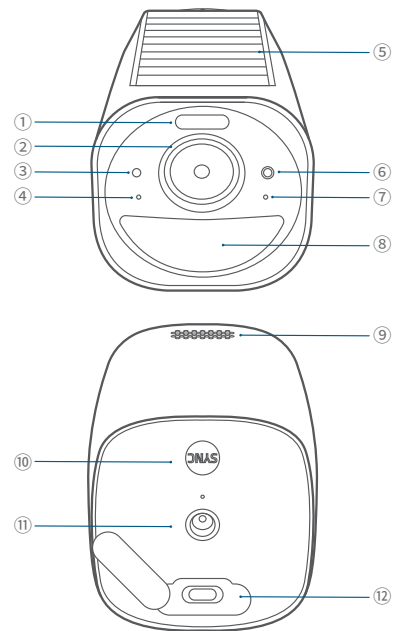
## QUICK START GUIDE

Anker Innovations Limited. All rights reserved. eufy and eufy Logo are trademarks of Anker Innovations Limited, registered in the United States and other countries. All other trademarks are the property of their respective owners.

# AT A GLANCE

## EufyCam S330

Model: T8160C



① Spotlight

② Camera Lens

③ Photosensitive Sensor

④ Microphone 1

⑤ Solar Panel

⑥ LED Indicator

⑦ Microphone 2

⑧ Motion Sensor

⑨ Speaker

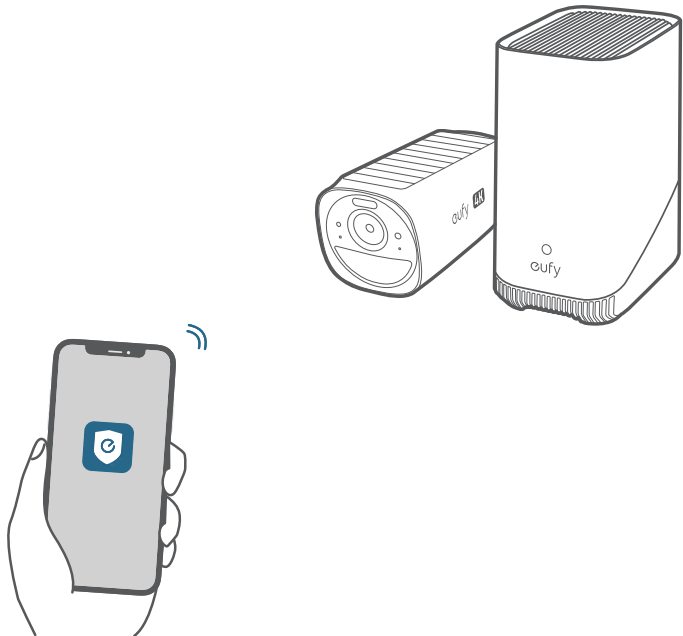
⑩ SYNC Button

⑪ Mounting Hole

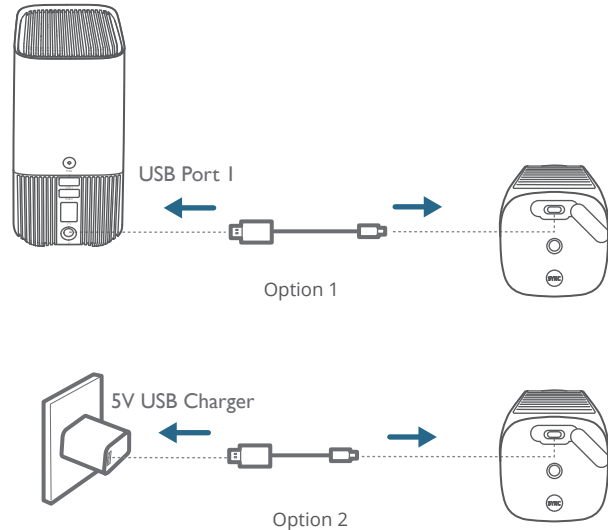
⑫ USB-C Charging Port

# ADDING EUFYCAM S330

On eufy Security app, follow the onscreen instructions to add your eufy Security devices. Choose **Add Device**, then select EufyCam S330 to add it to your system.



# CHARGING EUFYCAM S330



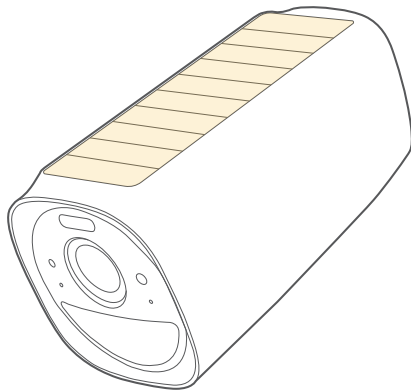
LED Indicator	Description
Steady Blue 	Charging
OFF 	Fully Charged
Charging Time	8 Hours

**EufyCam S330 includes a solar panel that converts sunlight into electrical energy and keeps the built-in battery charged every day.**

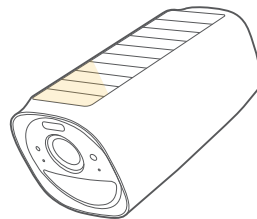
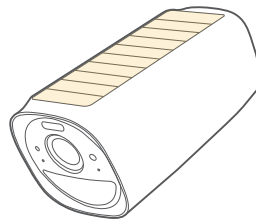
The charging efficiency fluctuates according to the intensity of the sunlight.

Don't worry when the battery level goes down. It happens when there isn't enough sunlight or the camera is consuming more power than usual.

You don't need to charge the camera with a cable until a low battery alarm goes off.



**2 HOURS PER DAY\***

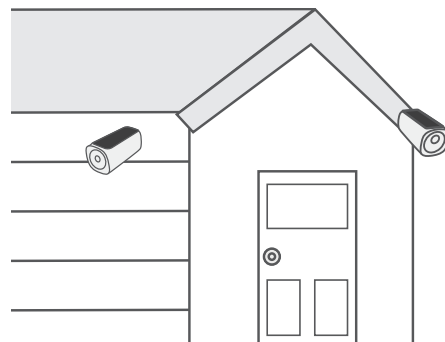
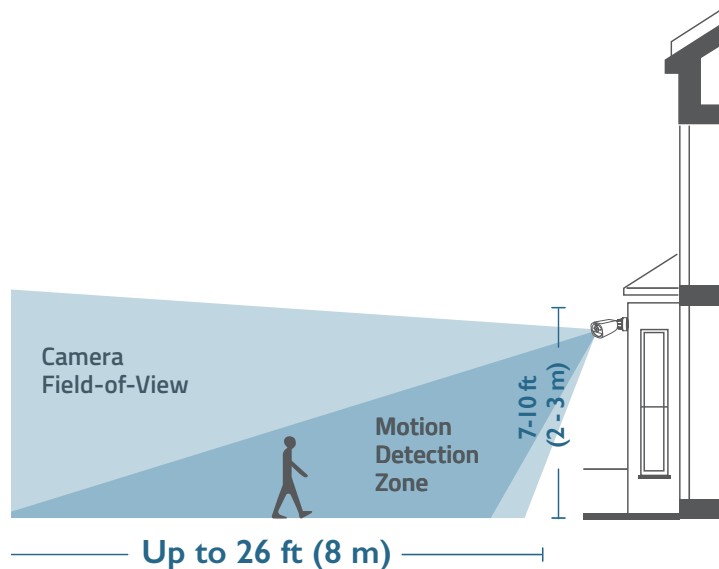


**\* Make sure the solar panel can be fully exposed to direct sunlight for at least 2 hours per day.**

# MOUNTING THE CAMERA

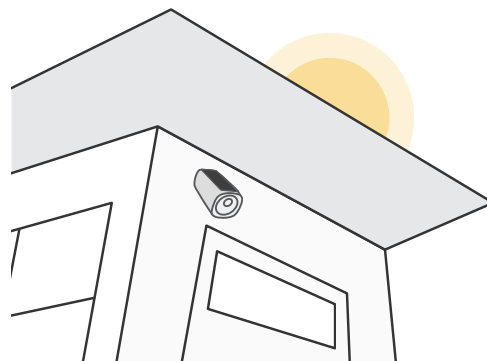
## Select a Location

Select a location where you can get the desired view. We recommend hanging the camera 7-10 ft (2-3 m) above the ground.



### Best places to install:

- Wall without eaves
- A pole or fence where sunlight is not blocked
- Over eaves, if the eaves are below 3 m high

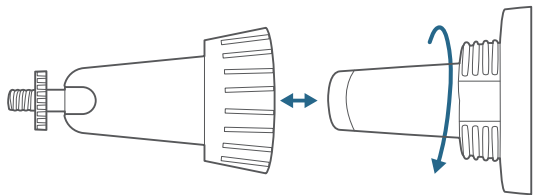


### Places not to install:

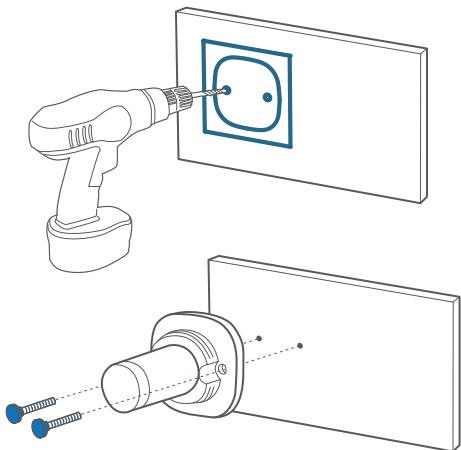
- Inside your home or under the porch
- Under or on a tree
- Under slanted eaves

## Mount the Camera

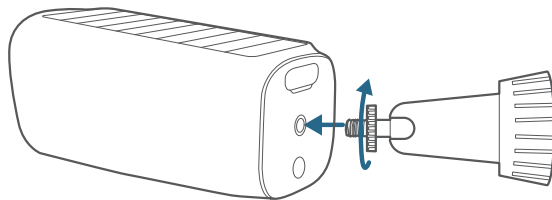
1. Turn the knob of the mounting bracket counterclockwise to loosen and disassemble it.



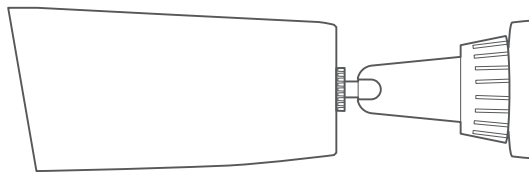
2. Drill holes with a 15/64 inch (6 mm) drill bit, then insert the anchors into the holes; anchors are necessary for walls that are made out of hard materials such as concrete, brick, or stucco.



3. Firmly screw the knob of the mounting bracket into the mounting hole.



4. Hold and screw the camera to the mounting bracket. Rotate the camera to adjust the view and check it using the live stream, which you can access in the eufy Security app.



\* For troubleshooting, check Help on the eufy Security app. Refer to the app page for LED indicator status.

# SAFETY

- Do not use the device in the environment at a too high or too low temperature, never expose the device to strong sunshine or too wet environment.
- The suitable temperature for T8160C and accessories is -20°C to 50°C (Charging temperature is 0°C to 45°C).
- It is recommended to supply the device in an environment with a temperature that ranges from 5°C~25°C.
- When supplying, please place the device in an environment that has a normal room temperature and good ventilation.

## **Warning:**

- Replacement of a battery with an incorrect type can defeat a safeguard;
- Disposal of a battery into fire or a hot oven, or mechanically crushing or cutting of a battery can result in an explosion;
- Leaving a battery in an extremely high temperature surrounding environment can result in an explosion or the leakage of flammable liquid or gas; and
- A battery subjected to extremely low air pressure may result in an explosion or the leakage of flammable liquid or gas.

## **Attention:**

- remplacement d'une batterie par un type incorrect pouvant supprimer une protection
- mise au rebut d'une batterie dans un feu ou dans un four chaud, ou écrasement mécanique ou coupure d'une batterie, susceptible de provoquer une explosion;
- maintien d'une batterie dans un environnement à très haute température pouvant provoquer une explosion ou la fuite de liquide ou de gaz inflammables; et
- batterie soumise à une pression de l'air extrêmement faible pouvant provoquer une explosion ou la fuite de liquide ou de gaz inflammables.

# NOTICE

## **NOTICE (United States of America)**

### **FCC Statement**

This device complies with Part 15 of the FCC Rules. Operation is subject to the following two conditions: (1) this device may not cause harmful interference, and (2) this device must accept any interference received, including interference that may cause undesired operation.

Warning: Changes or modifications not expressly approved by the party responsible for compliance could void the user's authority to operate the equipment.

Note: This equipment has been tested and found to comply with the limits for a Class B digital device, pursuant to Part 15 of the FCC Rules. These limits are designed to provide reasonable protection against harmful interference in a residential installation.

This equipment generates uses and can radiate radio frequency energy and, if not installed and used in accordance with the instructions, may cause harmful interference to radio communications. However, there is no guarantee that interference will not occur in a particular installation. If this equipment does cause harmful interference to radio or television reception, which can be determined by turning the equipment off and on, the user is encouraged to try to correct the interference by one or more of the following measures: (1) Reorient or relocate the receiving antenna. (2) Increase the separation between the equipment and receiver. (3) Connect the equipment into an outlet on a circuit different from that to which the receiver is connected. (4) Consult the dealer or an experienced radio/TV technician for help.

### **FCC Radio Frequency Exposure Statement**

The device has been evaluated to meet general RF exposure requirements. The device can be used in fixed/mobile exposure condition. The min separation distance is 20cm.

The following importer is the responsible party  
Company Name: POWER MOBILE LIFE, LLC  
Address: 10900 NE 8th St, Ste 501, Bellevue WA 98004  
Telephone: 1-800-988-7973

## NOTICE (Canada)

This device complies with Industry Canada licence-exempt RSS standard(s).  
Operation is subject to the following two conditions:

- (1) this device may not cause interference, and
- (2) this device must accept any interference, including interference that may cause undesired operation of the device.

Le présent appareil est conforme aux CNR d'Industrie Canada applicables aux appareils radio exempts de licence. L'exploitation est autorisée aux deux conditions suivantes:

- (1) l'appareil nedit pas produire de brouillage, et
- (2) l'utilisateur de l'appareil doit accepter tout brouillage radioélectrique subi, même si le brouillage est susceptible d'en compromettre le fonctionnement.

This Class B digital apparatus complies with Canadian ICES-003.

Cet appareil numérique de la classe B est conforme à la norme NMB-003 du Canada.

### IC RF Statement:

When using the product, maintain a distance of 20cm from the body to ensure compliance with RF exposure requirements.

Lors de l'utilisation du produit, maintenez une distance de 20 cm du corps afin de vous conformer aux exigences en matière d'exposition RF.



Your product is designed and manufactured with high quality materials and components, which can be recycled and reused.



This symbol means the product must not be discarded as household waste, and should be delivered to an appropriate collection facility for recycling. Proper disposal and recycling helps protect natural resources, human health and the environment. For more information on disposal and recycling of this product, contact your local municipality, disposal service, or the shop where you bought this product.



12-month limited warranty



United States

+1 (800) 988 7973

Mon-Sat 6:15AM-6:45PM(PT)

Sun 6:15AM-5:45PM(PT)

United Kingdom

+44 (0) 1604 936 200

Mon-Sun 6:00-19:00

Germany

+49 (0) 69 9579 7960

Mo-Fr 8:00-16:00 Sa 9:00-16:00



support@eufylife.com



@EufyOfficial



@EufyOfficial



@EufyOfficial

Anker Innovations Limited

Unit 56, 8th Floor, Tower 2, Admiralty Centre, 18 Harcourt Road, Hong Kong